

Covering Materials: Rubber



NRS 035 yellow
Natural rubber, excellent grip with good abrasion resistance



NTS 065 white FG
Nitrile rubber, oil and fat resistant synthetic rubber, food quality



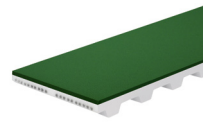
NRS 040 red
Natural rubber, high grip, good wear and abrasion resistance



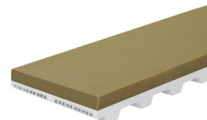
NTS 060 black
Nitrile rubber, very good wear and abrasion resistance under high temperatures, oil and fat resistance



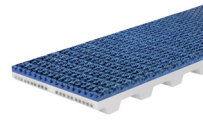
NRS 040 white FG
Natural rubber, high grip, good wear and abrasion resistance, food quality



NTS 070 green
Nitrile rubber, oil and fat resistant, good grip, light fabric texture surface, good wear and abrasion resistance



NRS 040 beige
Synthetic natural rubber, high grip, excellent for profiling and grooving, high tear and abrasion resistance



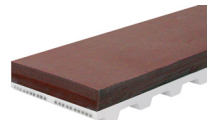
CXS 065 C37 blue
Nitrile rubber, high wear and abrasion resistant, oil and fat resistance, C37 supergrip profile



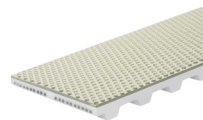
NRS 060 red
Natural rubber, high wear and abrasion resistance, good cut and tear resistance



SRS 040 C37 tan
Synthetic rubber, high wear and abrasion resistance, sensitive grip, C37 supergrip profile



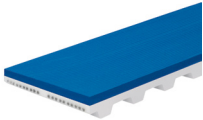
NRS 070 purple
Natural rubber, excellent wear and abrasion resistance, high cut and tear resistance



SRS 040 N19 white
Synthetic rubber, good wear and abrasion resistance, good grip, N19 nipple profile

| Rubber | | | | | | | | | | |
|-------------------|----------------------|--------------------|---------------------|--------|----------------------------------|------------------------|--------------------|------------|---------------|---------------------------------------|
| Type | Material | Hardness [° ShA] | Density [kg / m³] | Color | Max. contact temperature [° C] | Oil and fat resistance | Coeff. of friction | Food grade | Pulley factor | Standard thickness [mm] |
| NRS 035 yellow | natural rubber | 35 | 990 | yellow | +65 | low | 1.2 | no | 13 | 3, 4, 5, 6, 8, 10, 12, 15, 20, 25, 30 |
| NRS 040 red | natural rubber | 40 | 980 | red | +70 | low | 1.0 | no | 15 | 1.6, 2.4, 3.2, 5, 6, 8, 10, 12, 15 |
| NRS 040 white FG | natural rubber | 40 | 1000 | white | +70 | limited | 1.0 | yes | 15 | 2, 3, 5, 6, 8, 10 |
| NRS 040 beige | synthetic rubber | 40 | 1000 | beige | +70 | low | 1.1 | no | 15 | 4, 6, 8, 10, 12, 15 |
| NRS 060 red | natural rubber | 60 | 1100 | red | +75 | low | 0.9 | no | 17 | 3, 5, 6, 8, 10, 12, 20, 25 |
| NRS 070 purple | natural rubber blend | 70 | 1130 | purple | +75 | limited | 0.6 | no | 20 | 3, 4, 5, 6, 8, 10, 12, 15, 20, 25 |
| NTS 065 white FG | nitrile rubber | 65 | 1300 | white | +80 | good | 0.8 | yes | 18 | 5, 10 |
| NTS 060 black | nitrile rubber | 60 | 1300 | black | +110 | good | 0.7 | no | 18 | 4, 6, 8, 10, 12 |
| NTS 070 green | nitrile rubber | 70 | 1200 | green | +100 | good | 0.7 | no | 25 | 1, 2 |
| CXS 065 C37 blue | nitrile rubber | 65 | 750 | blue | +120 | excellent | 0.9 | no | 20 | 4.3 |
| SRS 040 C37 tan | synthetic rubber | 40 | 800 | tan | +80 | limited | 1.0 | no | 15 | 4.3 |
| NTS 050 C37 red | nitrile rubber | 50 | 1200 | red | +120 | excellent | 0.7 | no | 20 | 4.3 |
| SRS 040 N19 white | synthetic rubber | 40 | 1700 | white | +80 | limited | na | no | 20 | 2 |

Covering Materials: PU & PVC



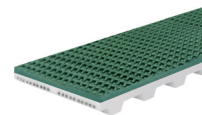
PUS 060 blue/black
Polyurethane, high grip, flexible, very tough, embossing possible



PUS 080/BS white
Polyurethane, excellent cut and wear resistant, good oil and chemical resistance



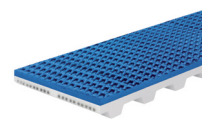
PUS 080 transparent
Polyurethane, high grip, high abrasion resistance, cut and tear resistance, embossing possible



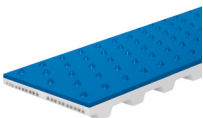
PVS 030 P6 green/blue
PVC, good chemical resistance, high grip, P6 supergrip profile



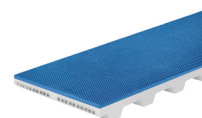
PUS 085 blue AM FG
Polyurethane, good abrasion resistance, excellent oil and fat resistance, antimicrobial, food quality



PVS 030 P7 blue
PVC, good chemical resistance, high grip, P7 minigrip profile



PUS 085 A16 blue AM FG
Polyurethane, good abrasion resistance, excellent oil and fat resistance, antimicrobial, A16 profile



PVS 035 blue
PVC, high grip, limited oil and grease resistance, embossing possible



PUS 085 A5 blue FG
Polyurethane, good abrasion resistance, excellent oil and fat resistance, A5 nipple profile



PVS 065 A24 white FG
PVC, good oil and grease resistance, good chemical resistance, haringbone profile



PUS 092 white
Polyurethane, excellent abrasion resistance, good oil and fat resistance

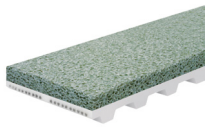


PVS 065 A13 white
PVC, good oil and grease resistance, good chemical resistance, sawtooth profile

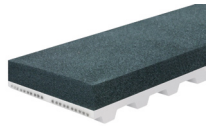
PU & PVC

| Type | Material | Hardness [° ShA] | Density [kg / m³] | Color | Max. contact temperature [° C] | Oil and fat resistance | Coeff. of friction | Food grade | Pulley factor | Standard thickness [mm] |
|------------------------|--------------|--------------------|---------------------|-------------|----------------------------------|------------------------|--------------------|------------|---------------|---------------------------|
| PUS 060 blue/black | Polyurethane | 60 | 1150 | blue, black | +80 | good | 0.9 | no | 25 | 2.5 |
| PUS 080 transparent | Polyurethane | 80 | 1110 | transp. | +80 | good | 0.8 | no | 30 | 1, 2, 3, 4 |
| PUS 085 blue AM FG | TPU Ropanyl | 85 | 1230 | blue | +80 | excellent | 0.6 | yes | 30 | 1.5 |
| PUS 085 A16 blue AM FG | TPU Ropanyl | 85 | 860 | blue | +80 | excellent | na | yes | 20 | 2.5 |
| PUS 085 A5 blue FG | TPU Ropanyl | 85 | 950 | blue | +80 | excellent | na | yes | 15 | 3.5 |
| PUS 092 white | Polyurethane | 92 | 1300 | white | +80 | excellent | 0.6 | no | 30 | 2, 3 |
| PUS 080/BS white | PU Ropan BS | 80 | 1000 | white | +80 | good | 0.4 | no | 25 | 2, 3, 4 |
| PVS 030 P6 green/blue | PVC Flexam | 30 | 780 | blue, green | +90 | limited | 0.9 | no | 15 | 4 |
| PVS 030 P7 blue | PVC Flexam | 30 | 800 | blue | +90 | limited | 0.9 | no | 15 | 4 |
| PVS 035 blue | PVC Flexam | 35 | 1390 | blue | +90 | limited | 1.1 | no | 20 | 1, 2, 3 |
| PVS 065 A24 white FG | PVC Nonex | 65 | 660 | white | +90 | good | na | yes | 18 | 4 |
| PVS 065 FG blue/white | PVC Nonex | 65 | 1330 | blue, white | +90 | good | 0.7 | yes | 25 | 2, 3, 4 |
| PVS 065 blue AM FG | PVC Nonex | 65 | 1330 | blue | +90 | good | 0.7 | yes | 25 | 1.5 |
| PVC 065 P13 white | PVC Nonex | 65 | 750 | white | +90 | good | na | yes | 18 | 4 |

Covering Materials: Cellular



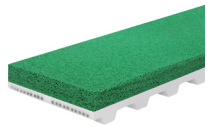
NRS 160 grey/orange
Natural rubber, open cellular construction, high resilience, high elasticity and porosity, compressible



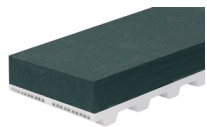
NRS 200 black
Natural rubber, open cellular construction, high grip, high resilience, high elasticity and porosity, compressible



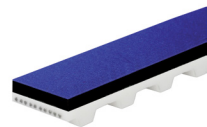
NRS 250 orange
Natural rubber, open cellular construction, non-marking, high resilience, high elasticity and porosity



NRS 270 green
Natural rubber, open cellular construction, high grip, non-marking, high resilience



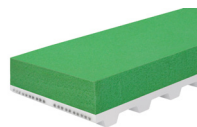
NES 290 black
Neoprene rubber, closed cellular construction, very high grip, good oil and chemical resistance



FBS 160 blue
Closed cellular neoprene rubber covered by premium stretch fabric, low friction surface



PUS 220 blue
Polyurethane, low density partially closed cellular construction, good oil and fat resistance



PUS 300 green
Polyurethane, medium density partially closed cellular construction, good abrasion resistance



PUS 400 brown
Polyurethane, high density partially closed cellular construction, good abrasion resistance



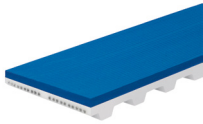
PUS 400 beige
Polyurethane, high density closed cellular construction, excellent wear resistance



PUS 600 yellow
Polyurethane, very high density fully closed cellular construction, good wear and abrasion resistance

| Cellular | | | | | | | | | | |
|---------------------|----------------------------------|--------------------|---------------------|--------------|----------------------------------|------------------------|--------------------|------------|---------------|-----------------------------|
| Type | Material | Hardness [° ShA] | Density [kg / m³] | Color | Max. contact temperature [° C] | Oil and fat resistance | Coeff. of friction | Food grade | Pulley factor | Standard thickness [mm] |
| NRS 160 grey/orange | natural rubber, open cellular | - | 160 | orange, grey | +65 | low | 1.0 | no | 6 | 5, 10, 15, 20, 25, 30 |
| NRS 200 black | natural rubber, open cellular | - | 200 | black | +65 | low | 1.0 | no | 6 | 3, 5, 8, 10, 15, |
| NRS 250 orange | natural rubber, open cellular | - | 250 | orange | +65 | low | 1.0 | no | 8 | 5, 10, 15, 20, 25, 30 |
| NRS 270 green | natural rubber, open cellular | - | 270 | green | +65 | low | 1.0 | no | 8 | 5, 10, 15 |
| NES 290 black | neoprene rubber, closed cellular | - | 290 | black | +85 | good | 1.3 | no | 10 | 5.5, 7, 10.5, 13, 30 |
| FBS 160 blue | fabric covered cellular neoprene | - | 160 | blue | +70 | good | 0.3 | no | 15 | 3, 6 |
| PUS 220 blue | cellular polyurethane | - | 220 | blue | +70 | good | 0.5 | no | 12 | 5, 7, 11, 12, 14, 25 |
| PUS 300 green | cellular polyurethane | - | 300 | green | +70 | good | 0.5 | no | 14 | 4, 5, 7, 10, 11, 12, 14, 25 |
| PUS 400 brown | cellular polyurethane | - | 400 | brown | +70 | good | 0.5 | no | 15 | 3, 5, 11, 12, 14, 25 |
| PUS 400 beige | cellular polyurethane | - | 400 | beige | +80 | good | 0.3 | no | 16 | 1, 2, 3, 4, 5, 6 |
| PUS 600 yellow | micro cellular polyurethane | 50 | 600 | yellow | +70 | excellent | 0.4 | no | 20 | 2, 3, 4, 5, 6, 8, 10 |

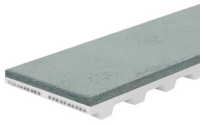
Covering Materials: Special



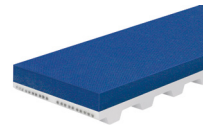
PR S 060 blue/red
Technopolymer, high grip, good abrasion resistance, light embossing possible, silicon-free, good flexibility at low temperatures



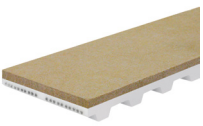
AMS 090 A16 ivory
Polyester, good abrasion resistance, excellent oil and fat resistance, A16 nipple profile



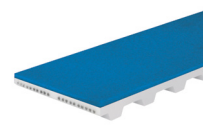
CLS 925 grey
Chrome leather, high abrasion resistance, medium grip, good for oily and greasy circumstances



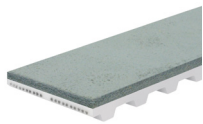
SIS 060 blue
Silicone rubber, good wear and abrasion resistance, self-releasing surface



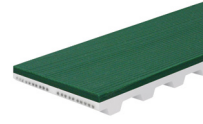
NPS 055 brown/white
Needle punched polyester fabric, low grip, high abrasion and wear resistance



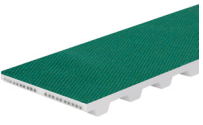
SIS 040 light blue FG/white
Silam silicone rubber, excellent tear strength, high grip, self-releasing surface, food quality



PES 999 grey
Needle punched polyester fabric impregnated, low grip, high abrasion resistance



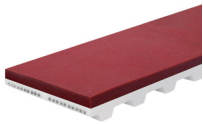
ELS 060 green
Technopolymer, high grip, good oil and fat resistance, excellent abrasion and tear resistance



PAS 778 green
Low friction and low noise nylon fabric, excellent wear resistance, good oil and chemical resistance



KFS 999 yellow^{*)}
Aramid felt, heat resistant, good abrasion resistance, good oil and fat resistance



PLS 035 red
Pletex poly blend, high grip, limited oil and grease resistance, embossing possible

| Special | | | | | | | | | | |
|------------------------------|---------------------------------|--------------------|---------------------------------|--------------|----------------------------------|------------------------|--------------------|------------|---------------|---------------------------|
| Type | Material | Hardness [° ShA] | Density [kg / m ³] | Color | Max. contact temperature [° C] | Oil and fat resistance | Coeff. of friction | Food grade | Pulley factor | Standard thickness [mm] |
| PR S 060 blue/red | thermoplastic technopolymer | 60 | 1030 | blue, red | +80 | good | 0.9 | no | 25 | 2.3 |
| CLS 925 grey | chrome leather | - | 930 | grey | +80 | excellent | 0.8 | no | 30 | 3 |
| NPS 055 brown/white | needle punched polyester fabric | - | 560 | brown, white | +80 | good | 0.3 | no | 25 | 2.5 (white: 2) |
| PES 999 grey | polyester fabric | - | 1400 | grey | +80 | good | 0.3 | no | 25 | 2.0 |
| PAS 778 green | nylon fabric | - | 220 | green | +80 | good | 0.3 | no | - | 0.5 |
| PLS 035 red | Pletex poly blend | 35 | 1385 | red | +90 | limited | 0.9 | no | 20 | 2, 3, 4 |
| AMS 090 A16 ivory | Amtel polyester | 90 | 450 | ivory | +100 | excellent | na | yes | 30 | 2.5 |
| SIS 060 blue | silicone rubber | 60 | 1600 | blue | +220 | good | 0.6 | no | 17 | 3.2, 5.0, 7.0 |
| SIS 040 l bl. FG, white | silicone rubber Silam | 40 | 1120 | blue, white | +250 | excellent | 1.3 | yes | 15 | 1-10 |
| ELS 060 green | Elastonyl technopolymer | 60 | 1060 | green | +80 | good | 0.9 | no | 25 | 2.4 |
| KFS 999 yellow ^{*)} | Aramid felt | - | 320 | yellow | +480 ¹⁾ | good | 0.3 | no | na | 10 |

^{*)} also available PBO felt +600°C, Nomex felt + 280°C, Polyester felt +180°C

¹⁾ surface contact temperature