

Bond | Protect | Beautify

With our manual guns, automatic and robotic applicators, supplied by our wide range of pumps & machines for fluid handling, dosing, mixing & dispensing.

SAMES KREMLIN provides industrial solutions for production increase, quality improvement, material & cost savings.

We are designers and manufacturers of process equipment that is divided into 6 ranges:

Airspray: Since 1925, we have been an Airspray manufacturer bringing you the very best in finishing.

Airmix®: Creator of Airmix® Technology since 1975, we provide the perfect mix between quality and productivity.

Airless: We provide premium Airless Products for finishers with demanding applications.

REXSON Dispense: Pumping beyond possible, dispensing precisely.

Electrostatic: Expertise for high finishing quality & efficiency.

Powder: Powder coating solutions for the highest Productivity since 1960.

FIND YOUR
LOCAL CONTACT
BY FLASHCODE:



www.sames-kremlin.com

SAMES KREMLIN

13, chemin de Malacher - CS70086
38243 Meylan Cedex France
Tel. : +33 (0)4 76 41 60 60 - Fax : +33 (0)4 76 41 60 90
info@sames-kremlin.com - www.sames-kremlin.com

SAMES KREMLIN

AIRMIX® 10C18 PAINT PUMP



- Efficiency: perfect for AIRMIX® finish
- Optimization: built with minimal parts
- Simplicity: lowest cost of ownership

Related Technologies



GT Sealing



Cup
Lub



2 Ball

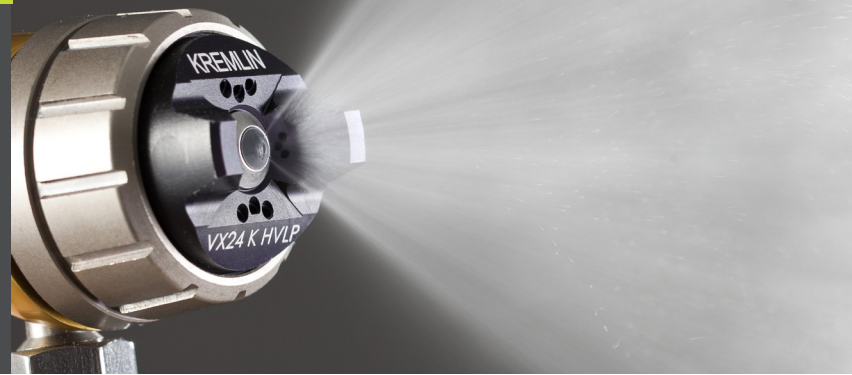


Triple
chrome
layer

Apply your Skills

www.sames-kremlin.com

AIRMIX® 10C18 + Xcite™ gun package AIRMIX®



TECHNICAL DATA

		AIRMIX® 10C18 + Xcite™ gun package
Recommended operation with:		1 Xcite™ gun equipped with max tip size 09
Pressure ratio		10/1
Fluid volume per cycle (cm ³)		18
Fluid Output at 30 cycles/mn (L/mn)		0.55
Free flow rate (L/mn)		1.1
Air consumption (m ³ /h) at 30 cycles/mn at 4 bar		1.9
Sound pressure level (dBa)		79.4
Maximum air inlet pressure (bar)		6
Maximum fluid pressure (bar)		60
Maximum Fluid Temperature (°C)		60
Sealing Packings	Upper sealing	Stainless steel cartridge with GT sealing
	Lower sealing	PFA single cup seal
Xcite™ gun (g) (weight)		498
Airmix® 10-C18 weight (kg) (w/o support or rods)		5.45
Wetted parts		Hard chrome stainless steel, treated stainless steel, stainless steel

SAMES KREMLIN PUMP TECHNOLOGY

Our pump range is designed around 3 strong themes: **Efficiency, Optimization, and Simplicity.**

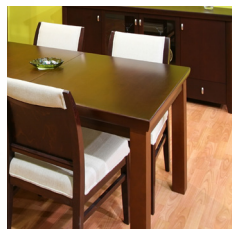
This pump range is the ideal partner for your AIRMIX® spray gun by providing exceptional performance with finish quality and high transfer efficiency.

A large selection of accessories allows you to create various AIRMIX® electrostatic configurations to meet all your customer needs.

MATERIAL HANDLED

One component or two component solvent or water-based materials, varnishes, lacquers, polyurethanes, stains.

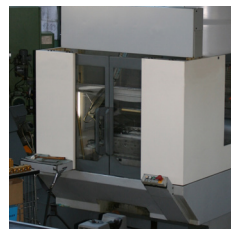
RECOMMENDED MARKETS



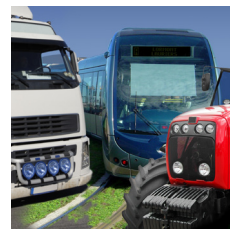
FURNITURE



KITCHEN AND BATHROOM



MACHINE TOOLS



ROLLING EQUIPMENT

CUSTOMER BENEFITS

- Ultimate pump control: Slow movement during pump priming at very low air pressure (0.6 bar)
- Constant delivery and pulse free for superior finish
- Easy flushing and less wastage (< 0.5l)
- Fast color changes

INCREASED PRODUCTIVITY

The VX 24 AIRMIX® aircap with «EZ adjust» function allows precise positioning of the aircap (easy to use)

ACCOMODATES ALL TYPES OF PRODUCTS

Widest range of tips in the world

ULTRA COMPACT AND LIGHTWEIGHT

- Easy to move and available in several configurations

DIFFERENTIAL AIR MOTOR

- No external air distributor 45% less part vs competitors
- 20 years of experience on component reliability

CLOSED CONSTRUCTION

- No risk of injuries
- Protect lubricant from external contamination

EASY COUPLING

- Quick disassembling

STAINLESS STEEL CONSTRUCTION

- 50% less parts vs competitors
- Compatible with water-based products (triple chrome-plated wetted parts)

LARGE FOOT VALVE

- To handle a large range of materials

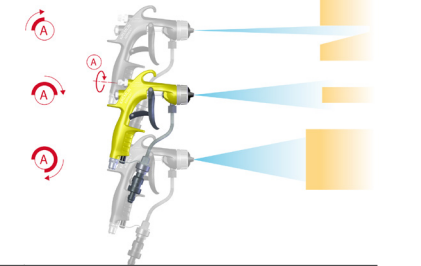
SUPERIOR ATOMIZATION QUALITY

VX24 AIRMIX® aircap and reliable design



IDEAL FOR SPRAYING COMPLEX SHAPE PARTS

Accurate fan width adjusting knob



VERY COMFORTABLE GRIP AND USE

Lighter gun and redesigned handle

OPTIMIZED AIR MOTOR

- Works perfectly with an air compressor of only 0,5 HP
- Low noise level

SINGLE GT SEAL

- No throat packing maintenance
- Low friction
- Large lubricant wet cup

EASY FLUSHING

- Reduced fluid section volume minimizes product and solvent losses during flushing
- The mobile seal located on the piston ensures the mechanical cleaning of the fluid section internal wall during the pump run
- No dead zone design

