



Floor-mounted ultrasonic devices

## Elmasonic xtra ST

**xtra robust and xtra cleaning performance for heavy-duty applications**

- Mobile single-tank devices of 8 sizes
- 25/45 kHz multi-frequenz technology  
for cleaning stubborn contaminations and sensitive surfaces with one device
- Switchable Dynamic-, Pulse- and Sweep-functions for more ultrasonic performance
- Long-lasting, robust devices with tanks made of special stainless steel
- Easy and clear operation, protected against spraying water

# Elmasonic xtra ST

## Robust and strong single tank devices with multi-frequency technology

Elmasonic xtra ST floor-mounted ultrasonic devices are designed for use in a production environment, workshops and servicing. The wide range of features makes it easy and effective to work with these devices. You can easily remove even stubborn contaminants, like polishing pastes, at 25 kHz. At 45 kHz, you can gently clean and degrease sensitive surface materials. Using the switchable Sweep-, Pulse- and Dynamic-functions, you can achieve even more effective cleaning results. All functions and cleaning parameters like time and heating preselection and ultrasonic frequency are arranged user-friendly on the control panel on the front of the device where users can set and monitor them at a glance.

Elmasonic xtra ST devices are rated for continuous operation under the highest operational demands. The tanks are made of special stainless steel, which makes them robust with a long service life. In single-shift operation, they are guaranteed a warranty period of three years.



*Cleaning in the jewellery industry  
(e.g. necklaces, earrings, bracelets, rings, etc.)*



*Cleaning in watch manufacture  
(e.g. bottom cases, watch straps, etc.)*



*Industrial parts cleaning in workshops, production  
and servicing as well as for overhaul cleaning*

### Functions of Elmasonic xtra ST ultrasonic devices:

- **Multi-frequency at 25/45 kHz:** individually settable frequencies depending on the cleaning job.
  - **25 kHz for rough part cleaning** and removing stubborn contaminants like lapping and polishing paste, for example.
  - **45 kHz for cleaning sensitive parts** and surfaces from contaminants like oils, drilling emulsions and greases. Also ideal for hard metal and glass surfaces in industrial and artisan environments as well as jewellery manufactures.
- **Sweep-function** for optimum sound field distribution and cleaning performance in the entire ultrasonic bath.
- Switchable **Pulse-function** increases the peak ultrasonic performance output. This uprating makes it possible to remove even the most stubborn contaminants.
- **Dynamic-function:** The Sweep- and Pulse-functions run alternately on an automatic basis. The ultrasonic performance is temporarily increased by up to 20%. At the same time, the even ultrasonic sound field distribution in the ultrasonic bath enhances the cleaning effect.
- Short heating times due to the high heating capacity with temperature regulation (30 - 80°C)
- High **user safety** with automatic safety shutdown
- **Easy to service** due to quick changing of the generator and operator control unit. This means that the devices are ready for use again very quickly and are highly available for users.

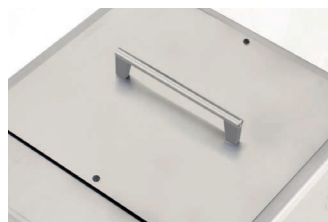
### Accessories for Elmasonic xtra ST



*Baskets can be hung in and set up in  
the drip position*



*Product carriers for e.g. jewellery  
parts*



*Stainless steel covers*



*Hinged covers with noise protection*

# Elmasonic xtra ST

The strong ultrasonic alternative for spray cleaning and solvent cleaning

Optional **noise protection cover** to reduce noise for relaxed working

## Clearly arranged control panel with protected from spraying water

- Individual time and temperature regulation
- Tried and tested Pulse- and Sweep-functions
- Increased performance due to Dynamic-function

## Robust stainless steel housing

Quick and easy draining of the cleaning liquid via the draining ball valve

## Long-lasting tank

made of special stainless steel with a sloping trough base to drain the device better

**High mobility**, since devices are on industrial rollers



*Elmasonic xtra ST 600H*

## Elmasonic xtra ST 1900S with ultrasound from 2 sides

- Particularly suitable for cleaning off large amounts of polishing pastes and other coarse contaminants
- **Long-lasting and low-wear tanks**, since the dirt particles sink to the bottom and neither block the ultrasound that enters at the side nor block the cleaning effect.
- Ideal for filter cleaning, since through the **opposite located side-ultrasound** even internal spaces can be reached and cleaned in an optimum way.
- For quick and effective cleaning, items to be cleaned can be placed in the baskets or suspended in a frame.
- Switchable **Pulse-function** to increase the peak ultrasonic performance output.
- Integrated **Sweep-function** for an even sound field distribution in the cleaning bath



*Elmasonic xtra ST 1900S*

# Suitable Cleaning Chemistry

## for perfect cleaning results

Depending on the cleaning job, Elma has just the right cleaning chemicals. From alkaline to acidic, all of our cleaning concentrates have been developed and tested in our in-house application lab.

- **Elma Clean**  
for watch and jewellery cleaning jobs.
- **Elma Tec Clean**  
for industrial parts cleaning in workshops and servicing



## Technical data of Elmasonic xtra ST

	xtra ST 300H	xtra ST 500H	xtra ST 600H	xtra ST 800H
Ultrasonic frequency (kHz)	25/45	25/45	25/45	25/45
Tank labour capacity (l)	22.0	42.0	45.0	70.0
Max. tank capacity (l)	30.0	50.0	58.0	83.0
Ultrasonic power effective - Normal, Pulse (W)	480	540 / 600	800 / 900	900 / 1000
Ultrasonic power effective - Dynamic (W)	600	600	1000	1000
Heating power (W)	1400	1400	1400	4200
Unit external dimensions W/D/H (mm)	500 / 550 / 936	500 / 550 / 936	670 / 580 / 936	670 / 580 / 936
Tank internal dimensions W/D/H (mm)	300 / 300 / 300	300 / 300 / 500	500 / 330 / 350	500 / 330 / 500
Max. basket loading (kg)	12.0	12.0	25.0	40.0
Basket internal dimensions W/D/H (mm)	255 / 230 / 170	255 / 230 / 370	400 / 255 / 220	400 / 255 / 370
Weight (kg)	40.0	45.0	55.0	61.0

	xtra ST 1400H	xtra ST 1600H	xtra ST 1900S	xtra ST 2500H
Ultrasonic frequency (kHz)	25/45	25/45	25/45	25/45
Tank labour capacity (l)	97.0	133.0	134.0	215.0
Max. tank capacity (l)	126.0	162.0	187.0	255.0
Ultrasonic power effective- Normal, Pulse (W)	1440	1600 / 1800	1000	1600 / 1800
Ultrasonic power effective - Dynamic (W)	1800	2000	-	2000
Heating power (W)	5000	7500	2300	7500
Unit external dimensions W/D/H (mm)	885 / 850 / 936	885 / 850 / 936	610 / 900 / 940	1035 / 900 / 936
Tank internal dimensions W/D/H (mm)	600 / 600 / 350	600 / 600 / 450	410 / 650 / 720	750 / 650 / 520
Max. basket loading (kg)	50.0	50.0	40.0	50.0
Basket internal dimensions W/D/H (mm)	490 / 525 / 210	480 / 525 / 300	360 / 560 / 240	630 / 575 / 370
Weight (kg)	87.0	93.0	75.0	107.0



Ultrasonics.Steam.Ultraclean.