

Equipped for all requirements in OT networks with the PROmesh P10!

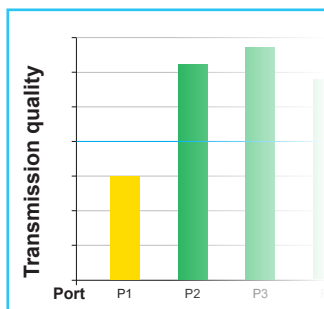
The times in which switches exclusively distributed data in the network are long gone! Meanwhile, the automation industry places increased demands on these infrastructure components:

They must be able to **prioritise a wide variety of data streams** to an ever-increasing extent and **guarantee reliable performance** even under high network loads. As a **central switch point**, the PROmesh P10 supports a multitude of important functions and provides a lot of essential information.

Line monitoring

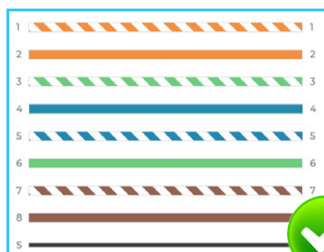
Online line diagnostics

- Permanent check of the transmission quality



Integrated cable tester

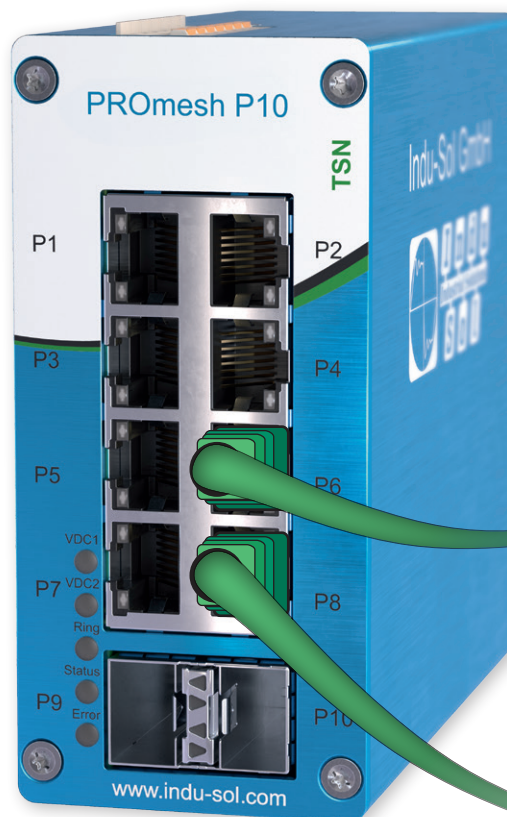
- Checking of the correct wiring



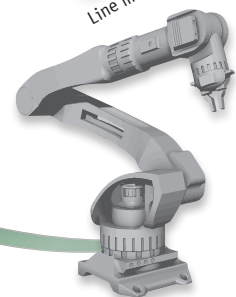
length: 32m / speed: 1Gbps

Highlights

- Up to 2.5 Gbps
- PROFINET 2.4
- TSN
- Online line diagnostics



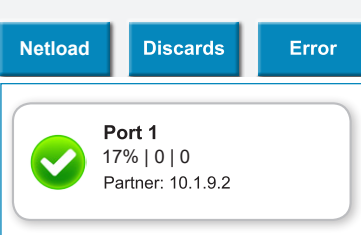
Line monitoring for drag chains and robots



TSN (Time-Sensitive Networking)

- One queue for each priority class – 8 priority queues
- Reservation of time slots
- Time synchronisation
- Cut through

Network monitoring



Environment monitoring

- Leakage current
- 24V power supply voltage
- Temperature

