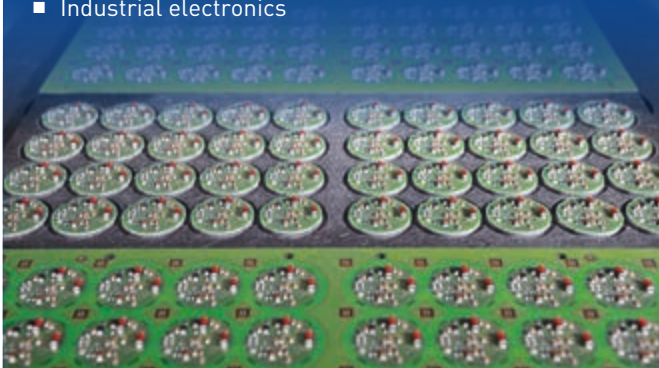


Benefit from our strengths

- State-of-the-art manufacturing technologies
- Quick and reliable delivery times
- High degree of flexibility
- Quality assurance using state-of-the-art equipment

Our key industries

- Medical technology
- Measurement and control technology
- Professional wireless technology
- Time recording systems
- Industrial electronics



JUMO production service

Assembly services for the electronics sector is our passion.

We have been manufacturing electronic modules for over 30 years and are one of the leading experts in the industry.

Thanks to our highly motivated employees in the Procurement, Order Preparation, Manufacturing, and Sales departments we can offer you top performance at fair prices in the field of electronics assembly.



More than **sensors + automation**



Your contacts

Product Manager

Wolfgang Blum
+49 661 6003-9314
wolfgang.blum@jumo.net

Operative Sales

Astrid Kemmerzell
+49 661 6003-541
astrid.kemmerzell@jumo.net

Technical Sales

Birger Haseneier
+49 661 6003-9746
birger.haseneier@jumo.net

Operative Sales

Carina Vorderbrüggen
+49 661 6003-853
carina.vorderbrueggen@jumo.net

www.jumo.net



PR 50005 EN/0061100/N2

Electronic Modules

Comprehensive EMS service for all aspects of electronic components



Electronic modules from JUMO – production portfolio



Material	Placement	Soldering	Cleaning	Testing	Varnishing	Potting	Mounting
<ul style="list-style-type: none"> • Procurement • Selection of international suppliers • 15 000 different electronic components in the JUMO stock list • Traceability 	<ul style="list-style-type: none"> • SMD • THT 	<ul style="list-style-type: none"> • Reflow soldering • Wave soldering • Selective soldering • Manual soldering • Reworking 	<ul style="list-style-type: none"> • Cleaning agent VIGON® A 201 • Process monitoring <ul style="list-style-type: none"> – Filtration – Bath analyzer – Solution samples • Measuring <ul style="list-style-type: none"> – Flux test – Resin test – Visual test – Contamination 	<ul style="list-style-type: none"> • Manual visual inspection • AOI • In circuit test • Functional test • Flying probe • High-voltage test • X-ray • Run-In 	<ul style="list-style-type: none"> • Dispensing • Spraying • Jetting (also between high components) • Preferred varnishes <ul style="list-style-type: none"> – SL1301 FLZ – SL1307 FLZ 	<ul style="list-style-type: none"> • Automatic potting system with a two-component potting material • Dispensing of different products <ul style="list-style-type: none"> – Glue – Masking tape – Two-component glue – Thick-coat varnish 	<ul style="list-style-type: none"> • Device and system mounting according to customer specifications

Quantities	Documentation for quote creation	Key figures
<ul style="list-style-type: none"> • THT module from 1 to 1 000 pieces per lot • SMD module from 50 to 30 000 pieces depending on assembly scope 	<ul style="list-style-type: none"> • Bill of materials (prepared in Microsoft® Excel®) with manufacturer specifications • Assembly diagram • Gerber data and description of printed circuit board • CAD file • Instruction for testing and circuit diagram (if testing is required) 	<ul style="list-style-type: none"> • 15 assembly tables for THT components • Theoretical capacity for 215 000 SMD components per hour • 2 000 different modules in the system • 1 700 000 modules per year • Smallest SMD design type that can be assembled: 0201/1005 • µBGA pitch 0.5 mm/0.3 mm • Greatest processable SMD usage standard max. 400×250 mm

