

Anika

Our new series of furniture castors



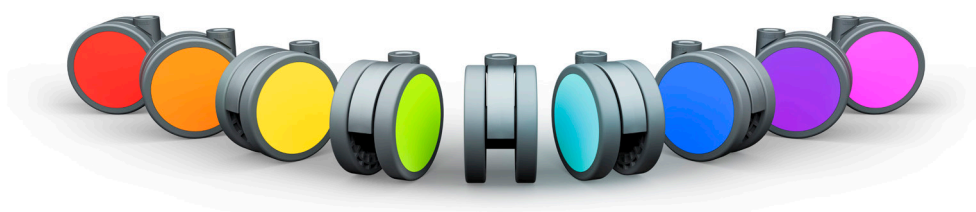
- Anika has a simple & elegant design
- Flexible with fittings & colors
- Possible with unique solutions for brake pedal, doms & printing
- High quality that meets the requirements for furniture and office chairs

Anika

Our new series of furniture castors

Personality

Scandinavian inspired for its simplicity and efficiency, Anika's design reflects her personality, with finesse and elegance. After all, it's made in France!



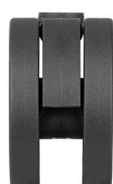
Design

Anika has an impressive and wide wardrobe! Matte, glossy, chrome or colourful coating, she will adapt exactly to any creation you design.



Standards

Environmentally produced in accordance with REACH and RoHs requirements, Anika is the ideal partner for all furnishing applications, such as chairs, office furniture, home furniture or shop fitting. Standards EN 12528, EN 12529 and Bifma have no secrets for her.



Data:

Diameter:	65 mm
Thread width:	11 mm
Wheel width:	39,5 mm
Dom Ø:	18 mm
Overall height:	67 mm
Load capacity:	40 kg

Anika is available in following wheel-combinations:



Swivel
castor



Swivel
castor with
brake



Swivel
castor with
intermittent
brake

Fittings:

Fittings in three different types:



Threaded stem with
hexagon neck



Plate fitting



Stem with circlip

All fittings are possible in black version!

Contact us for more information!

TENTE AB

Fraktvägen 5A
435 33 Mölnlycke
Telefon: 031- 46 47 00
Fax: 031- 48 68 48

E-mail: order@tente.se
Internet: www.tente.se