

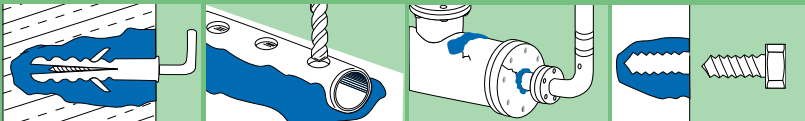
Epoxy Resin Putty

The kneadable universal repair compound

The versatile problem solver for repair, maintenance and construction. WEICON Epoxy Resin Putty is an easy-to-apply, cold curing two-component putty suitable for sealing, fastening, bonding and repairing.

The cured material can be machined (e.g. drilled, filed, milled) and overpainted without pre-treatment.

WEICON Epoxy Resin Putty bonds to metals, wood, glass, rubber, ceramics, concrete and most plastics. WEICON Epoxy Resin Putty resists fuels, oil, ester, salt water as well as most acids and lyes.



Applications:

- Sealing of pipes and tanks
- Anchoring of screws and hooks
- Repairing and building-up of castings
- Repairing of shafts, bearings, pumps and casings
- Reconditioning of defective threads
- Making of patterns and models for trial series
- Repairing of aluminium, light metal and diecast parts

Technical Data:

Composition:	Epoxy resin, mineral-filled
Colour after mixing:	green
Mixing ratio:	1:1
Pot life:	30 minutes
Handling strength*:	ca. 2 minutes
Final hardness*:	ca. 3 minutes
Compressive strength*:	80 MPa
Tensile strength*:	30 MPa
Flexural strength*:	56 MPa
E-Mod.*:	4.000 – 6.000 MPa
Shore hardness D*:	87
Shrinkage:	0,005 %
Temperature resistance:	-35°C to +200°C
Shelf life**:	24 months at room temperature

* Mean strength at +20°C acc to DIN 53281-83 (ASTM D 1002)

**Standard climate: +23°C and 50% relative humidity of air (DIN 50014-23/50-2)

Packaging:	100 g	box	Art.-No.: 10500100
	400 g	box	Art.-No.: 10500400
	800 g	box	Art.-No.: 10500800

WEICON GmbH & Co. KG

WEICON Middle East L.L.C.

Königsberger Str. 255 • DE-48157 Münster
Postfach 84 60 • DE-48045 Münster

Jebel Ali Ind. Area 3
P. O. Box 118216, Dubai – U.A.E

Tel. +49 (0) 251 / 93 22-0
Fax +49 (0) 251 / 93 22-244
Fax +49 (0) 251 / 93 22-233 Export

Phone +971 4 880 25 05
Fax +971 4 880 25 09
Mobile +971 50 545 99 83

www.weicon.de • info@weicon.de

www.weicon.ae • info@weicon.ae



Ausbesserung eines Aluminium-Gehäuses
Reconditioning of an aluminium housing



Reparatur von Dichtungsflächen im Gehäuse einer Labyrinthdichtung
Repair of sealing surfaces in a labyrinth seal housing



Musterteil
Demo part



Musterteil
Demo part

Any product specifications and recommendations given herein must not be seen as guaranteed product characteristics. They are based on our laboratory tests and on practical experiences. Since individual application conditions are beyond our knowledge, control and responsibility, this information is provided without any obligation. We do warrant the continuously high quality of our products being free from defects in accordance with and subject to our General Sales Conditions. However, our adequate laboratory and practical tests to find out if the product in question meets the requested properties are recommended. A claim cannot be derived from them. The user bears the only responsibility for non-appropriate or other than specified applications.

Ihr Fachhändler/ Distributed by:

DanLube a/s

"Så ved du det holder"

Tune Parkvej 5

4030 Tune

Tlf.: +45 70 25 12 80

Mail: info@danlube.dk - www.danlube.dk