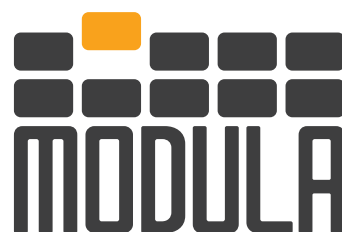




# Modula LIFT

Think Vertical, Think Modula

NEW GENERATION



# RECOVER SPACE AND INCREASE PRODUCTIVITY. VERTICAL AUTOMATED WAREHOUSES.

Modula are automatic vertical lift modules with trays, based on the concept of vertical storage and space saving on the ground.

They can reach a unit height of 16,1 metres high and hold up to 90.000 kg.

They can store all types of materials in a secure, clean, efficient manner, and they allow a ground surface area saving of up to 90%.

Modula have over 30 years' experience as an Italian company boasting the highest technology lines: a real smart factory 4.0.

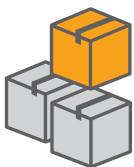


**WITHOUT MODULA**



**WITH MODULA**

## FLOOR SPACE RECOVERY UP TO 90%



**1. RECOVER SPACE**



**2. INCREASE SECURITY**



**3. SAVE TIME**



**4. IMPROVE EFFICIENCY**

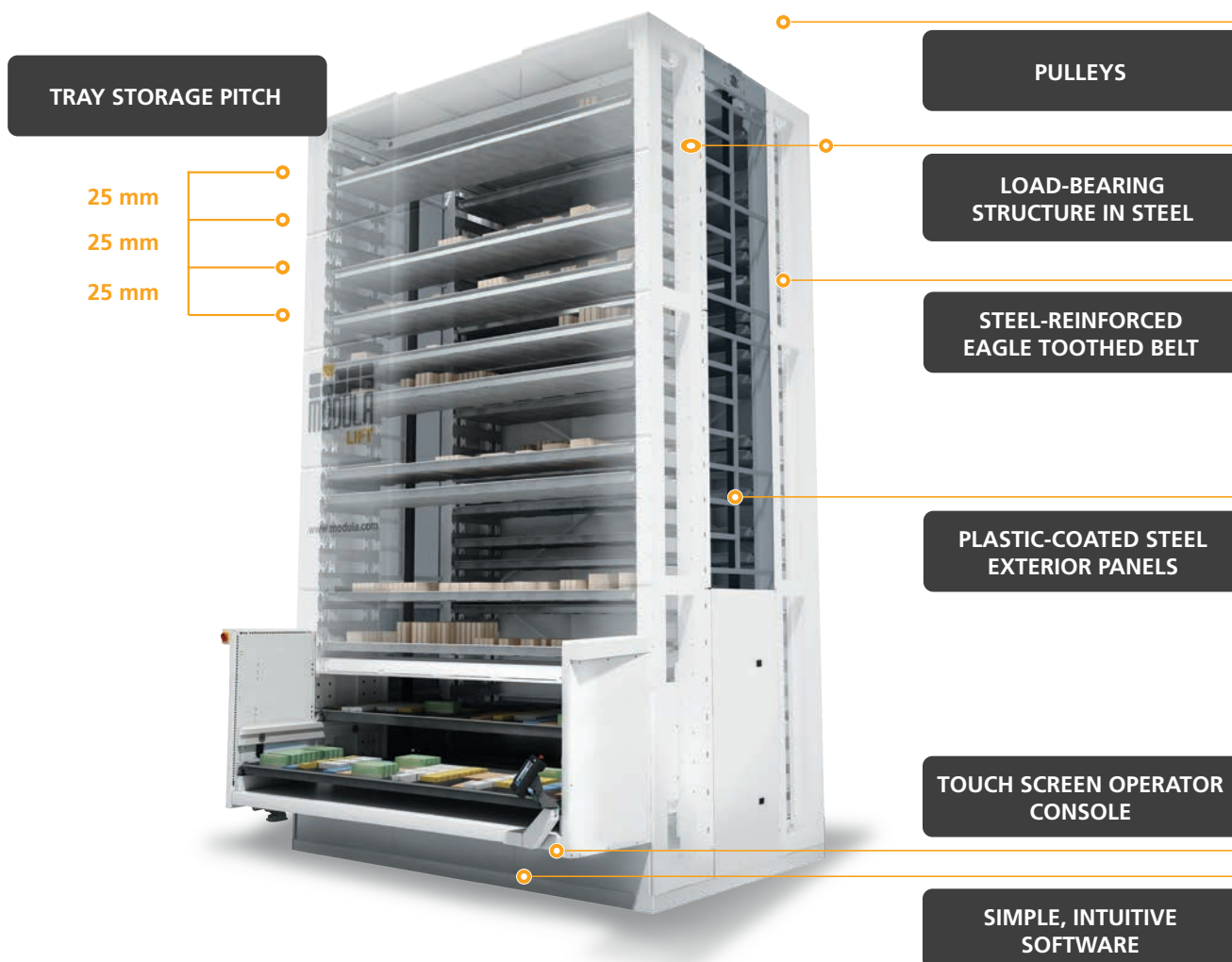


**5. REDUCE RISKS**



**6. BOOST INVENTORY  
MANAGEMENT**

- **UP TO 120 TRAYS PER HOUR**
- **12 BAY CONFIGURATIONS**
- **990 KG PAYLOAD FOR TRAYS UP TO 4,100 MM**



TECHNICAL FEATURES	
UNIT HEIGHTS from 3.300 mm to 16.100 mm	THROUGHPUT up to 120 trays/hr (depending on the configuration)
UNIT HEIGHT INCREMENT 200 mm	OPERATOR INTERFACE industrial console with 10.4" touch screen (Copilot)
TRAY STORAGE PITCH 25 mm	NUMBER OF BAYS up to 3, also above ground level and on the same side
TRAY WIDTHS from 1.500 mm to 4.100 mm	TYPES OF BAY internal or external with single or dual delivery level
TRAY DEPTHS 654 mm - 857 mm - 1,257 mm	<ul style="list-style-type: none"> <li>• Minimal energy consumption</li> <li>• Automatic return tray weight check</li> <li>• Dynamic tray storage height</li> <li>• Load-bearing structure in galvanised steel</li> <li>• Eagle steel-reinforced toothed belt transmission</li> <li>• Elevator guide system with 6 rollers per side</li> <li>• Multiple payload tray management</li> </ul>
GROSS TOTAL PAYLOAD from 35.000 kg to 90.000 kg depending on model and configuration	
MAXIMUM STORAGE HEIGHT CAPACITY 695 mm (bay S) / 895 mm (bay M) / 1,295 mm (bay XL)	



# OUR ADVANTAGES.

## MODULA'S TRAY CONFIGURATIONS

You can configure the Modula in different ways according to how you plan to use it, with different types of picking bays.

- Single bay
- Internal bay
- Opposite bay
- Double bay
- External bay
- Displaced bay.

With Modula you can select the dual delivery level to work on two trays at the same time (while one is in the bay, the other is preparing the subsequent picking), or with an external bay which facilitates worker activity if he is using mechanical aids like forklifts, zero-weight cranes or overhead hoists.

You can also carry out picking simultaneously on two sides of the machine or have access to trays in different levels.

### SINGLE INTERNAL DELIVERY



### SINGLE EXTERNAL DELIVERY



### DUAL INTERNAL DELIVERY



### DUAL EXTERNAL DELIVERY



# WHAT CAN YOU STORE IN A MODULA?

Whatever your industrial sector, Modula lets you store any type of product or spare part, in different sizes, weights, heights and volumes.

## WHAT DO COMPANIES USUALLY STOCK?

- Spare parts
- Small items
- Products or consumer goods for distribution or sale
- Finished and semi-finished products
- Tools, equipment, cosmetics, pharmaceuticals
- Electrical and electronic materials
- Mechanical parts
- Boxes and much more.



Tooling and drill bits



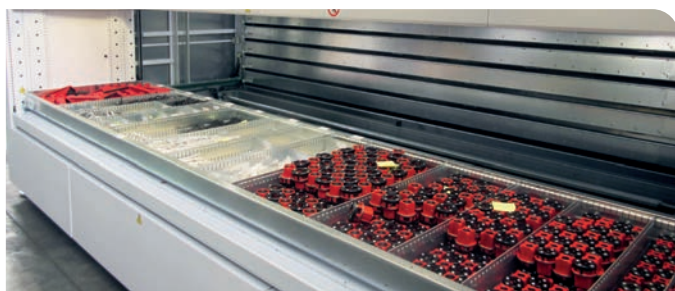
Reels and electronic components



Pharmaceuticals, boxes and cosmetics



Mechanical instruments



Tools and spare parts



Small parts and hardware



Bottles and labels



Spools, rope, chains



# LIFT MODELS

## ME - MED - MEDD



Model	Tray width (mm)	Tray depth (mm)	Tray wall height (mm)	Net tray payload (kg)	Unit footprint with INTERNAL bay (Width x Depth mm)	Unit footprint with EXTERNAL bay (Width x Depth mm)
ME25	1,500	654	45/70/120	250	1,917x2,556	1,917x3,246
ME25D	1,500	857	45/70/120	250	1,917x3,165	1,917x4,058
ME25DD	1,460	1,257	45/70/120	250	1,917x4.365	1,917x5.658
ME50	1,500	654	45/70/120	500	1,917x2,556	1,917x3,246
ME50D	1,500	857	45/70/120	500	1,917x3,165	1,917x4,058
ME50DD	1,460	1,257	70/120	500	1,917x4.365	1,917x5.658
ME75	1,500	654	7 / 120	750	1,917x2,556	1,917x3,246
ME75D	1,500	857	70/120	750	1,917x3,165	1,917x4,058
ME75DD	1,460	1,257	70/120	750	1,917x4.365	1,917x5.658
ME1000	1,460	654	70/120	990	1,917x2,556	1,917x3,246
ME1000D	1,460	857	70/120	990	1,917x3,165	1,917x4,058
ME1000DD	1,460	1,257	70/120	990	1,917x4.365	1,917x5.658

## MA - MAD - MADD



Model	Tray width (mm)	Tray depth (mm)	Tray wall height (mm)	Net tray payload (kg)	Unit footprint with INTERNAL bay (Width x Depth mm)	Unit footprint with EXTERNAL bay (Width x Depth mm)
MA25	1,900	654	45/70/120	250	2,317x2,556	2,317x3,246
MA25D	1,900	857	45/70/120	250	2,317x3,165	2,317x4,058
MA25DD	1,860	1,257	45/70/120	250	2,317x4.365	2,317x5.658
MA50	1,900	654	70/120	500	2,317x2,556	2,317x3,246
MA50D	1,900	857	70/120	500	2,317x3,165	2,317x4,058
MA50DD	1,860	1,257	70/120	500	2,317x4.365	2,317x5.658
MA75	1,900	654	70/120	750	2,317x2,556	2,317x3,246
MA75D	1,900	857	70/120	750	2,317x3,165	2,317x4,058
MA75DD	1,860	1,257	70/120	750	2,317x4.365	2,317x5.658
MA1000	1,860	654	120	990	1,936x2,556	1,936x3,246
MA1000D	1,860	857	120	990	1,936x3,165	1,936x4,058
MA1000DD	1,860	1,257	120	990	2,317x4.365	2,317x5.658

## MC - MCD - MCDD



Model	Tray width (mm)	Tray depth (mm)	Tray wall height (mm)	Net tray payload (kg)	Unit footprint with INTERNAL bay (Width x Depth mm)	Unit footprint with EXTERNAL bay (Width x Depth mm)
MC25	2,500	654	45/70/120	250	2,917x2,556	2,917x3,246
MC25D	2,500	857	45/70/120	250	2,917x3,165	2,917x4,058
MC25DD	2,460	1,257	45/70/120	250	2,917x4.365	2,917x5.658
MC50	2,500	654	70/120	500	2,917x2,556	2,917x3,246
MC50D	2,500	857	70/120	500	2,917x3,165	2,917x4,058
MC50DD	2,460	1,257	70/120	500	2,917x4.365	2,917x5.658
MC75	2,500	654	70/120	750	2,917x2,556	2,917x3,246
MC75D	2,500	857	70/120	750	2,917x3,165	2,917x4,058
MC75DD	2,460	1,257	70/120	750	2,917x4.365	2,917x5.658
MC1000	2,460	654	120	990	2,917x2,556	2,917x3,246
MC1000D	2,460	857	120	990	2,917x3,165	2,917x4,058
MC1000DD	2,460	1,257	120	990	2,917x4.365	2,917x5.658

## MX - MXD - MXDD



Model	Tray width (mm)	Tray depth (mm)	Tray wall height (mm)	Net tray payload (kg)	Unit footprint with <b>INTERNAL</b> bay (Width x Depth mm)	Unit footprint with <b>EXTERNAL</b> bay (Width x Depth mm)
MX25	3,100	654	45 / 70 / 120	250	3,517x2,556	3,517x3,246
MX25D	3,100	857	45 / 70 / 120	250	3,517x3,165	3,517x4,058
MX25DD	3,060	1,257	70 / 120	250	3,517x4,365	3,517x5,658
MX50	3,100	654	70 / 120	500	3,517x2,556	3,517x3,246
MX50D	3,100	857	70 / 120	500	3,517x3,165	3,517x4,058
MX50DD	3,060	1,257	70 / 120	500	3,517x4,365	3,517x5,658
MX75	3,100	654	70 / 120	750	3,517x2,556	3,517x3,246
MX75D	3,100	857	120	750	3,517x3,165	3,517x4,058
MX75DD	3,060	1,257	120	750	3,517x4,365	3,517x5,658
MX1000	3,060	654	120	990	3,517x2,556	3,517x3,246
MX1000D	3,060	857	120	990	3,517x3,165	3,517x4,058
MX1000DD	3,060	1,257	120	990	3,517x4,365	3,517x5,658

## ML - MLD - MLDD



Model	Tray width (mm)	Tray depth (mm)	Tray wall height (mm)	Net tray payload (kg)	Unit footprint with <b>INTERNAL</b> bay (Width x Depth mm)	Unit footprint with <b>EXTERNAL</b> bay (Width x Depth mm)
ML25	4,100	654	70 / 120	250	4,517x2,556	4,517x3,246
ML25D	4,100	857	70 / 120	250	4,517x3,165	4,517x4,058
ML25DD	4,060	1,257	70 / 120	250	4,517x4,365	4,517x5,658
ML50	4,100	654	120	500	4,517x2,556	4,517x3,246
ML50D	4,100	857	120	500	4,517x3,165	4,517x4,058
ML50DD	4,060	1,257	120	500	4,517x4,365	4,517x5,658
ML75	4,100	654	120	750	4,517x2,556	4,517x3,246
ML75D	4,100	857	120	750	4,517x3,165	4,517x4,058
ML75DD	4,060	1,257	120	750	4,517x4,365	4,517x5,658
ML1000	4,060	654	145	990	4,517x2,556	4,517x3,246
ML1000D	4,060	857	145	990	4,517x3,165	4,517x4,058
ML1000DD	4,060	1,257	145	990	4,517x4,365	4,517x5,658



**MAXIMUM  
PAYLOAD FOR  
ALL TRAYS:  
UP TO 990 KG  
PER TRAY**



**INDUSTRIAL  
COPILOT  
CONSOLE:  
10.4 INCH  
TOUCH  
SCREEN**



**MODULA  
WMS  
SOFTWARE:  
TO HAVE  
EVERYTHING  
UNDER  
CONTROL**



**OPERATOR  
SAFETY:  
ERGONOMIC,  
SAFE, TUV  
CERTIFICATION**

# MODULA INTEGRATES WITH ALL TECHNOLOGY

Modula is ideal for those who also need complete integration with other technologies such as:

- Robots
- Roller conveyor
- Put-To-Light systems
- Manipulators
- Zero Weight cranes.

Thanks to Modula WMS warehouse software, your VLM can be integrated with all ERP systems to connect the warehouse Modula into the company workflow and make it interact with the management system.

This way you can manage the materials and users registries, production orders, stocks, spare parts, and you can better check on stocks and all warehouse movements: picking and restoring. With Modula, taking inventory is very easy, while producing dedicated analyses and reports to have everything under control.



Integration with anthropomorphic robots



Put-to-Light systems connected to WMS



Integration with manipulators and cranes



Integration with conveyors



Insulated machines for outdoor installation



Fire protection system integration



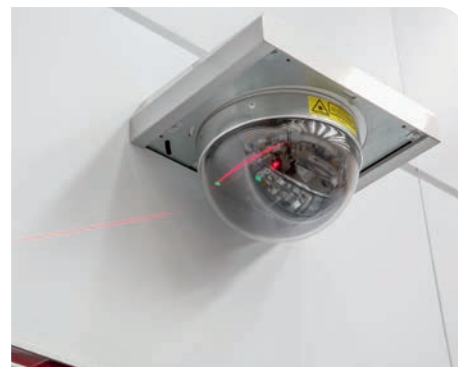
# OPTIONS



Magnetic badge Reader



EKS Reader



Laser Pointer



Put to Light



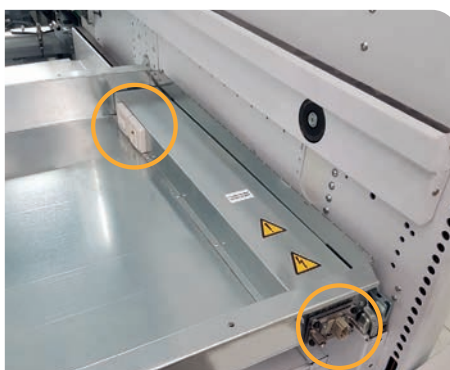
1D or 2D barcode Reader



Sliding console



Automatic door



Electrified tray



Foot bar task complete



End Picking Button



External bay lighting



RFID Reader



Alphanumeric bar

# OPTIONS



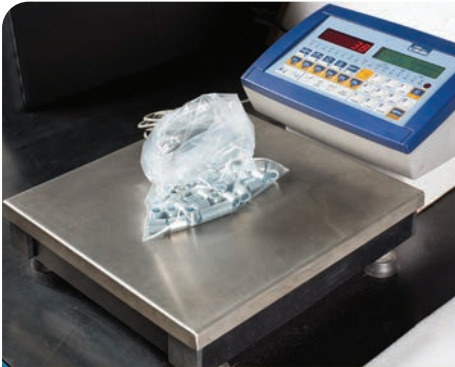
LED bar



ESD protection system



Label printer



Counting scale



Telescopic bay



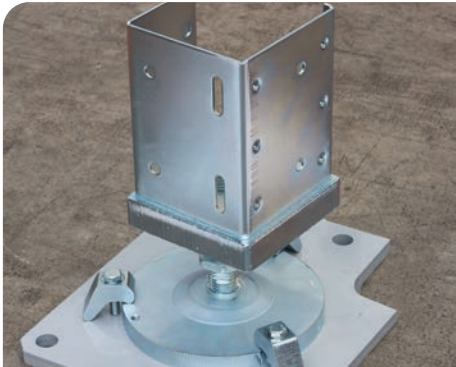
Trolley



Picking cart



Tray accessories



Weight distribution plates



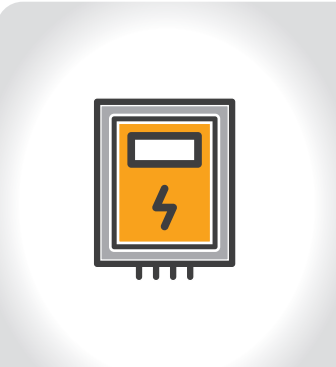
Modula Green



0 °C



Sprinkler predisposition



Remote electrical panel



# SOME REFERENCES



## BEVERAGE

AKIJ FOOD AND BEVERAGE  
BODEGAS JOSE ESTEVEZ  
COCA COLA  
CONTRI SPUMANTI  
GINESTET  
MOTHER PARKERS  
NATURAL WATERS OF VITI  
NESTLÉ WATERS  
PEPSICO  
SPENDRUPS  
SUNTORY

Bangladesh  
Spain  
Belgium, USA  
Italy  
France  
USA  
Fiji  
UK  
USA, Australia, UK, Germany, Brazil  
Sweden  
Mexico



## MECHANICAL METALLURGICAL

ALSTOM TRANSPORT INDIA  
BIESSE  
BONFIGLIOLI RIDUTTORI  
SATURN FASTENERS

India  
Italy, USA, Malaysia  
Italy, India, USA, China  
USA



## AUTOMOTIVE

AUDI  
BMW  
BREMBO  
BRIDGESTONE CANADA  
CNH INDUSTRIAL  
CONTINENTAL  
FCA  
FERRARI  
GKN DRIVELINE  
GOODYEAR  
HARLEY DAVIDSON  
JAGUAR  
MASERATI  
MICHELIN  
PEUGEOT-CITROEN  
PORSCHE  
RENAULT  
SUBARU  
VOLKSWAGEN

Mexico, Belgium, Spain  
China, Belgium, Germany, Mexico, Canada, UK  
Italy, Poland, China, Czech Rep, USA  
Canada  
Spain, Italy, Belgium, Netherlands  
USA, Germany  
Brazil, Poland, Italy, Serbia  
Italy  
Mexico, USA  
Germany, Canada  
USA  
Belgium  
Italy  
France  
France  
Germany  
France  
USA, Canada  
Germany, China, Spain, Argentina



## CHEMICAL PHARMACEUTICAL BIOMEDICAL

GLAXO SMITH KLINE  
INNOMED  
INTAS PHARMACEUTICALS  
JOHNSON & JOHNSON  
ORFIT

Italy, UK, USA  
USA  
India  
USA, Brazil  
Belgium



## ELECTRICAL ELECTRONIC

BHARAT ELECTRONICS  
EATON CONTROLS  
PT INFINEON  
SIEMENS  
WURTH

India  
Mexico  
Singapore  
France, India, Mexico  
Germany, Slovakia



## HYDRAULIC PNEUMATIC

BOSCH REXROTH  
WALVOIL  
GUNTER TATA HUOTECHNIKA  
MECANIZADOS ALCOY

Mexico, Germany, USA, Italy  
Italy, USA  
Hungary  
Spain



## AGRICULTURAL MACHINERY

CNH INDUSTRIAL  
KOMATSU  
JOHN DEERE  
RANGER INDUSTRIES

Brazil, Italy, Spain, Belgium  
Italy  
USA  
USA



## TRANSPORT

METROPOLITAN TRANSPORTATION AUTHORITY  
NEW YORK CITY TRANSIT AUTHORITY  
SNCF  
TORONTO TRANSIT COMMISSION

USA  
USA  
France  
Canada



## PLASTIC

CONTITECH CHINA RUBBER & PLASTICS TECHNOLOGY  
MILACRON PLASTIC TECH  
KLINTPACK  
WESTLAND GUMMIWERKE

China  
USA  
Tailandia  
Germany



## FOOD

CHOBANI  
GRISSIN BON  
OISHI - LIWAYWAY CHINA

USA  
Italy  
China



## AERONAUTIC

BOMBARDIER  
CHINA ACADEMY OF SPACE TECHNOLOGY  
HINDUSTAN AERONAUTICS  
LOCKHEED MARTIN CORPORATION  
LUFTHANSA

Germany  
China  
India  
USA  
China



## CERAMICS

FLORIM  
PORCELANOSA MEXICO  
PORCELANOSA NEW YORK  
ROCA SANITARIO  
SACMI

Italy, USA  
Mexico  
USA  
Spain  
Italy, Spain, Mexico



## CLOTHING

GIORGIO ARMANI  
CELINE  
NIKE  
PRADA  
VALENTINO

Italy  
Italy  
USA, Belgium  
Italy  
Italy



## COSMETICS

AIR-VAL INTERNATIONAL  
IBERCHEM AROMAS  
L'OREAL  
MARIA GALLAND  
RUSI COSMETIC

Spain  
Spain  
China  
Germany  
Germany



## OPTICAL

ALCON  
BUHLER LEYBOLD OPTICS  
LUXOTTICA  
MEKRA LANG GMBH & CO.

USA  
China  
Italy  
Germany



## JEWELLERY

LUCE BIANCA  
MIDAS CHAIN  
OTTAVIANI INTERNATIONAL  
PERLUNICA

Italy  
USA  
Italy  
Italy



## ENERGY OIL&GAS

BAKER HUGES/ NUOVA PIGNONE  
GE ENRGY  
KUWAIT NATIONAL PETROLEUM COMPANY  
PETRO CANADA  
PETROLEO BRAZILEIRO

UK, Italy  
USA  
UAE  
Canada  
Brazil, Poland, Italy, Serbia



## PAPER

AKIJ PRINTING AND PACKAGES  
BIC ECRITURE  
CCL LABELS  
INTERNATIONAL PAPER  
HACHETTE LIVRE

Bangladesh  
France  
USA  
USA  
France



## ARMY

DDDC DEFENSE DISTRIBUTION DEPOT CAL  
DLA-AVIATION  
U.S.A.F. - MCCONNELL AIR FORCE BASE  
U.S. AIR FORCE DOVER AFB

USA  
USA  
USA  
USA



## SUPERMARKET

CONAD DEL TIRRENO  
CONSUM COOP  
OTK KART USA CORP.  
SUPERMERCATI TOSANO CEREAL  
WOOLWORTHS SUPERMARKET

Italy  
Spain  
USA  
Italy  
Australia



## FURNITURE

ALLIANCE LAUNDRY  
BIG HOME SHOP  
INTERFACE  
SCAVOLINI  
SANA TRENNWANDBAU

Czech Rep  
UK  
USA  
Italy  
Germany



## PACKAGING

AETNA GROUP  
POPLAST  
SOFLOG

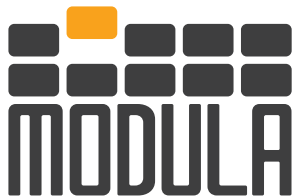
USA  
Italy  
France



# MODULA WORLD



Modula is present in 5 continents with dealers and branches located in over 50 countries



**MODULA S.p.A.**  
via San Lorenzo 41  
Salvaterra di Casalgrande (RE)  
Tel. +39 0522 774111  
[info@modula.com](mailto:info@modula.com)  
[www.modula.com](http://www.modula.com)

**Hans  
Schourup  
A/S**

Hans Schourup A/S  
Sletvej 2D  
8310 Tranbjerg  
Tlf. 8614 6244



All information provided on this catalogue is for informative purposes only and is not binding. Modula reserves the right to change information on this catalogue at any time. Modula will not accept liability for or guarantee the accuracy of the information contained herein.