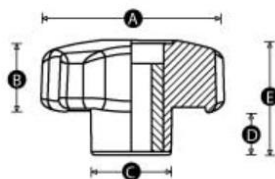
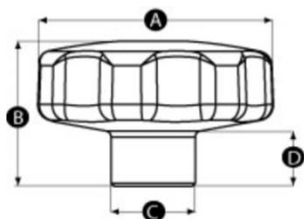
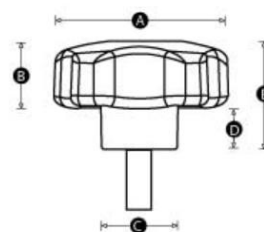


High Runners - Lobe Knobs



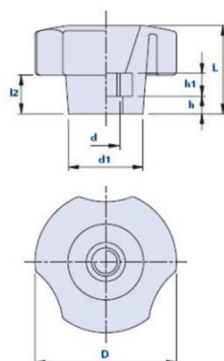
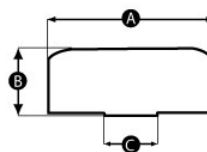
PATT. NO	A	B	C	D	E	Thread size	Material	Insert material
	MM	MM	MM	MM	MM			
3140/T	40	17	18	12	29	M6, M8	PAGF, PP	MS, St, SS
3150/T	50	19	21	12	31	M6, M8, M10	PAGF, PP	MS, St, SS
3160/T	60	21	21	13	34	M8, M10, M12	PAGF, PP	MS, St, SS

PATT. NO	A	B	C	D	E	Thread size	Thread Length	Material	Insert material
	MM	MM	MM	MM	MM				
3140/M	40	17	18	12	29	M6, M8	15, 20, 25	PAGF, PP	MS, St, SS
3150/M	50	19	21	12	31	M6, M8, M10	20, 25, 35, 40	PAGF, PP	MS, St, SS
3160/M	60	21	21	13	34	M8, M10, M12	20, 25, 30, 40, 50	PAGF, PP	MS, St, SS



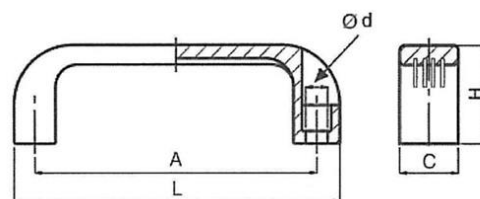
PATT. NO	A	B	C	D	Thread size	Material
	MM	MM	MM	MM		
5140/T	40	24	14	8	M8	SS
5150/T	50	31	18	10	M10	SS
5160/T	60	38,6	20	14,3	M12	SS

Code	A	B	C	Thread x length	Material
	MM	MM	MM		
82650009	25	10	8	M6x8mm	Stainless steel matt

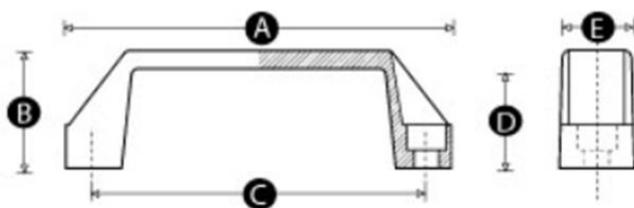


Code	D	L	d1	L2	h	d	h1	Insert	Weight
	MM	MM	MM	MM	MM		MM		gr.
01THF60F	60	38	28	17	5	M12	10	St. zinc pl.	68

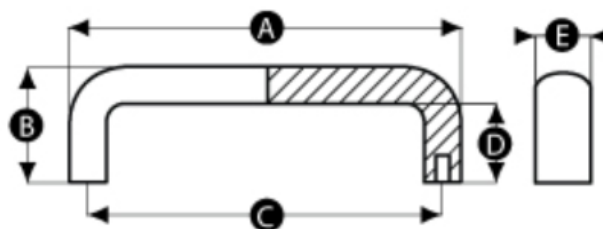
High Runners - Bridge handles



Item no	L	A	ØD	H	C	Material
	MM	MM	MM	MM	MM	
G116PA	136	116	9	40	24	Polyamide black 30% GF.
G119PA	140	120	9	40	24	Polyamide black 30% GF.
G132PA	154	132	9	45	26	Polyamide black 30% GF.

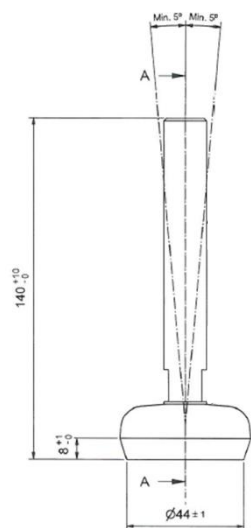


Item no	L	A	ØD	H	C	Bore size	Material
	MM	MM	MM	MM	MM	MM	
1480	134	41	117	35	26	8,5	Polyamide black 30% GF.

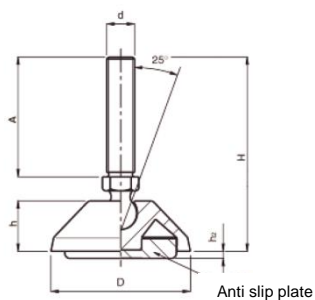


Item no	A	B	C	D	E	Thread size	Material
	MM	MM	MM	MM	MM	MM	
65117	134	50	117	34	25	M6	Polyamide black 15% GF.
65120	137	50	120	34	25	M6	Polyamide black 15% GF.

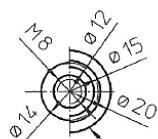
High Runners - Levelling feet



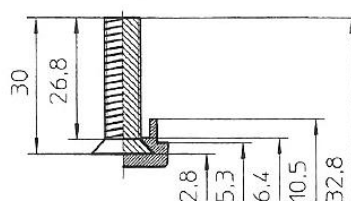
Item no	Material	Load rating
		KN
MS-Ø49-M16X120SS316	AISI316 / NBR 70 shore	10,0
MS-Ø49-M16X120VMZN	Hot dip galvanized steel 8.8 / NBR 70 shore	10,0



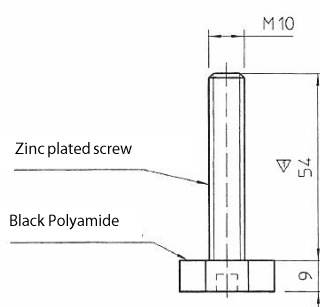
Item no	D	A	d	H	h	h2	Material
	MM	MM	MM	MM	MM	MM	
86600	80	66	M16	99	22	3	Polyamide black 30% GF.
86601	80	100	M16	133	22	3	Polyamide black 30% GF.
86002	80	150	M16	183	22	3	Polyamide black 30% GF.



Material: TPE and Zinc Plated Steel

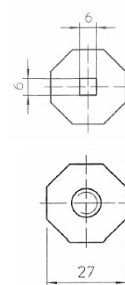


Item no: 31032100



Zinc plated screw

Black Polyamide



Levelling foot w. fixed base and embedded zinc plated screw

Item no: 39656500

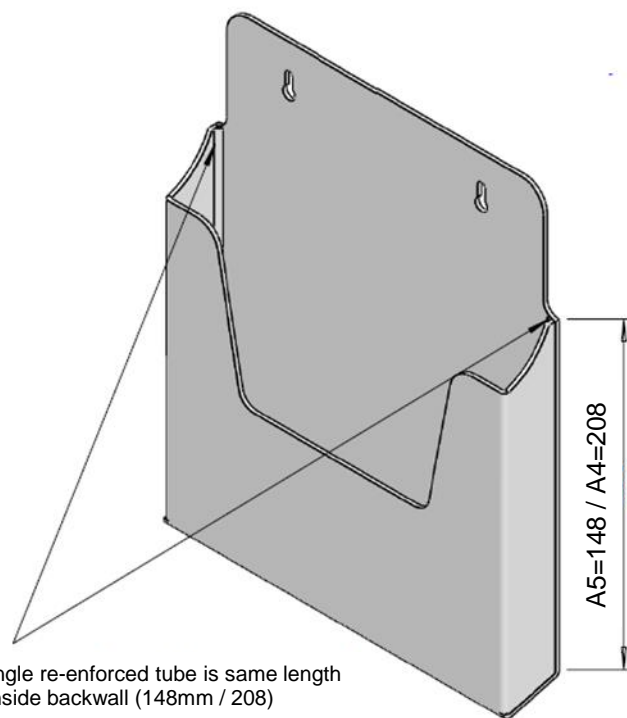


High Runners - Misc products



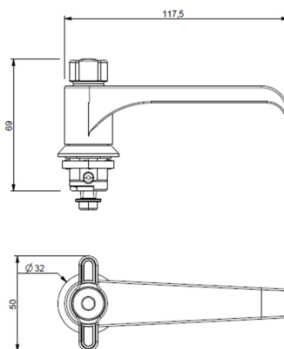
Item no	Material	Size	Weight
		HxWxD mm	kg.
DH-A5	2,5 mm clear acrylic.	209x158x37	0,175
DH-A4	2,5 mm clear acrylic.	289x230x37	0,335

All material comply to RoHs and Reach standard.



Item no	Material	Size	Sliding bolt
		mm	mm
SB9599VFZN	Hot dip galvanized steel	12,7 x 135	ø12,8

Item no	Description	Material
1000-SU867	L-Handle for hatch w. safety knob	Die cast zinc and plastic



Item no	Material	Size
		mm
LK-187X94ZN	Die cast zinc grey	187x94

High Runners - Magnets



	Item no	Description	Material	Force	Ø x H	LxWxH	Thread size	Thread Length
				N	MM		M	MM
	MGN10050086	Rubberized Circular Magnet	Neodym	85	43 x 6	-	M4	4
	MGN10022002	Rubberized Circular Magnet	Neodym	180	65 x 9	-	M5	8
	MGN10049678	Rubberized Circular Magnet	Neodym	180	66 x 9	-	M6	8
	MGN10049258	Rubberized Circular Magnet	Neodym	420	88 x 9	-	M8	20
	MGN10028097	Rubberized Square Magnet	Neodym	1200	-	84x50x34	M10	34
	MGN10057345	Steel Ferrit Magnet	Stzn/Ferrit	350	63 x 14	-	M8	18
	109225	Steel Ferrit Magnet	Stzn/Ferrit	180	47 x 9	-	M6	8