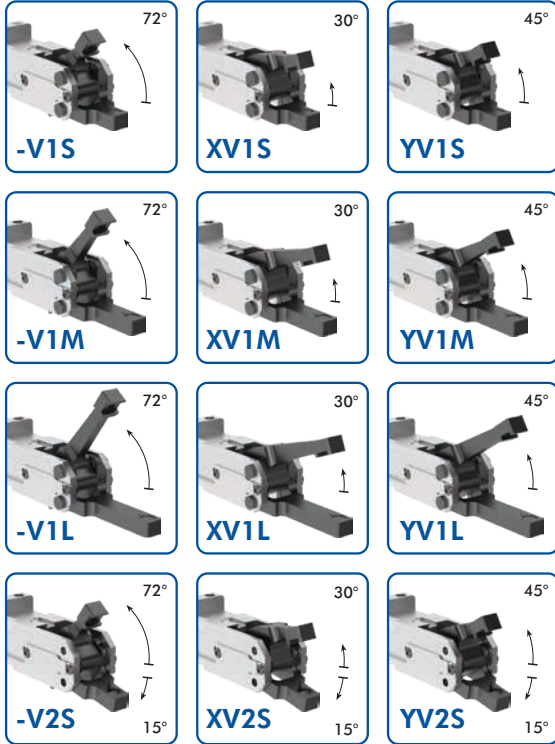


84AF2 SERIES (FIXED/MOVEABLE LOWER JAW)

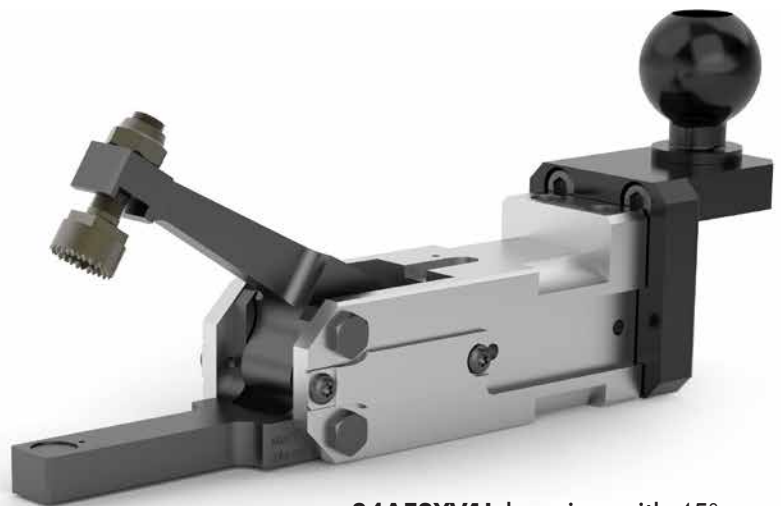
Cam Type Sheet Metal Grippers | Ordering Information

84AF2 -V1S D9 V 00 02

Jaw Type/Opening Angle Options



	Upper Jaw	Lower Jaw	Jaw Type
-V1S	72°	0°	Short
XV1S	30°	0°	
YV1S	45°	0°	
-V1M	72°	0°	Medium
XV1M	30°	0°	
YV1M	45°	0°	
-V1L	72°	0°	Long
XV1L	30°	0°	
YV1L	45°	0°	
-V2S	72°	15°	Short
XV2S	30°	15°	
YV2S	45°	15°	



84AF2YV1L long jaw with 45° opening angle/fixed lower jaw shown with GT-BGA-A mount.



84AF2XV2S short jaw with 30° upper/15° lower opening angle shown with 82ZB-131-1 mount.

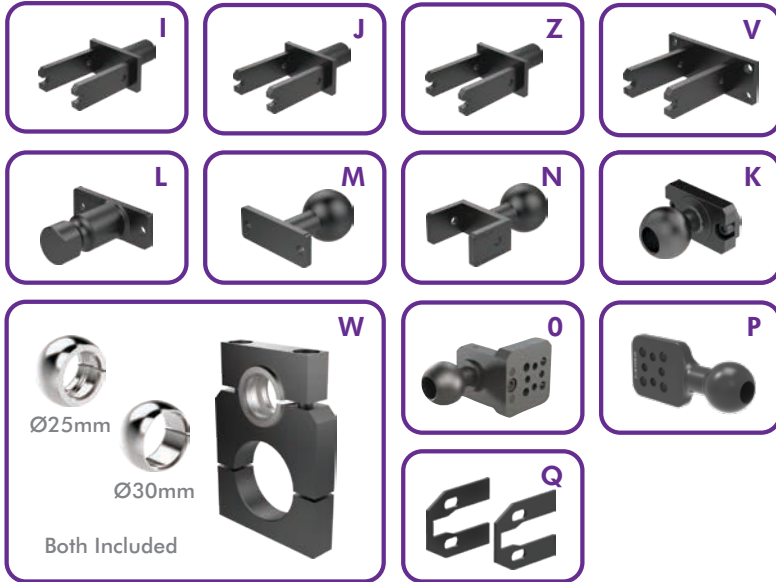
Specifications	Unit	
Piston	mm	25
Actuation Time (open/close)	sec	<0,1
Air Consumption per Double Stroke at 6 bar	L	0,32

84AF2 SERIES (FIXED/MOVEABLE LOWER JAW)

Cam Type Sheet Metal Grippers | Ordering Information

Mounting Options

Description	
O None	N Ø32mm Flanged Ball GT-32B-84A2- B
I Ø20mm Rear Rod 8MA-165-1	K Ø32mm Ball Adapter Mount (Mounted on left as standard) 82ZB-131-1
J Ø25mm Rear Rod 8MA-166-1	W On-Body Swivel Ball 82ZB-025-2
Z Ø1.00" Rear Rod 8MA-168-1	O Ø32mm Ball Gripper Mount GT-BGA-A
V Rear Flange 8MA-147-1	P Ø32mm Paddle Gripper Mount GT-BGA-32B
L Ø20mm Apple Core GT-20M-84A2-L-R	Q Guards 8MH-054-1 (For Jaw Arrangement Options V1S , V1M , V1L only)
M Ø32mm Rear Ball GT-32B-84A2- L-R	



Gripper Tips, Teeth (for Upper Jaw only)

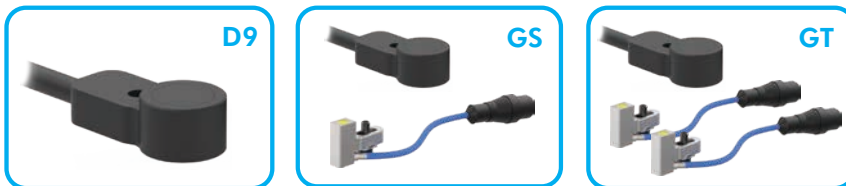
Description	
00 None	
02 Gripper Tip 8JD-1004-1	
18 18mm Gripper Teeth 8JZ-125-1	
20 20mm Gripper Teeth 8JZ-124-1	



Shims for gripper teeth available
Order Separately **8SB-039-1**
Dimensions: 10 x 10 x 1 mm

Sensor Options (not suitable for High Temperature applications)

Description	
D9 PNP Part Presence Sensor, M12X1 Plug - 8EA-1024-1 (Standard on all models)	
GS 1X D9 Part Presence Sensor, M12X1 Plug - 8EA-1024-1 1X D5 Double Sheet Control, M12x1 Plug - 8EA-087-1	
GT 1X D9 Part Presence Sensor, M12X1 Plug - 8EA-1024-1 2X D5 Double Sheet Control, M12x1 Plug - 8EA-087-1	



Cover for Sensing Systems **GS**, **GT**
Order Separately **82ZB-185-1**

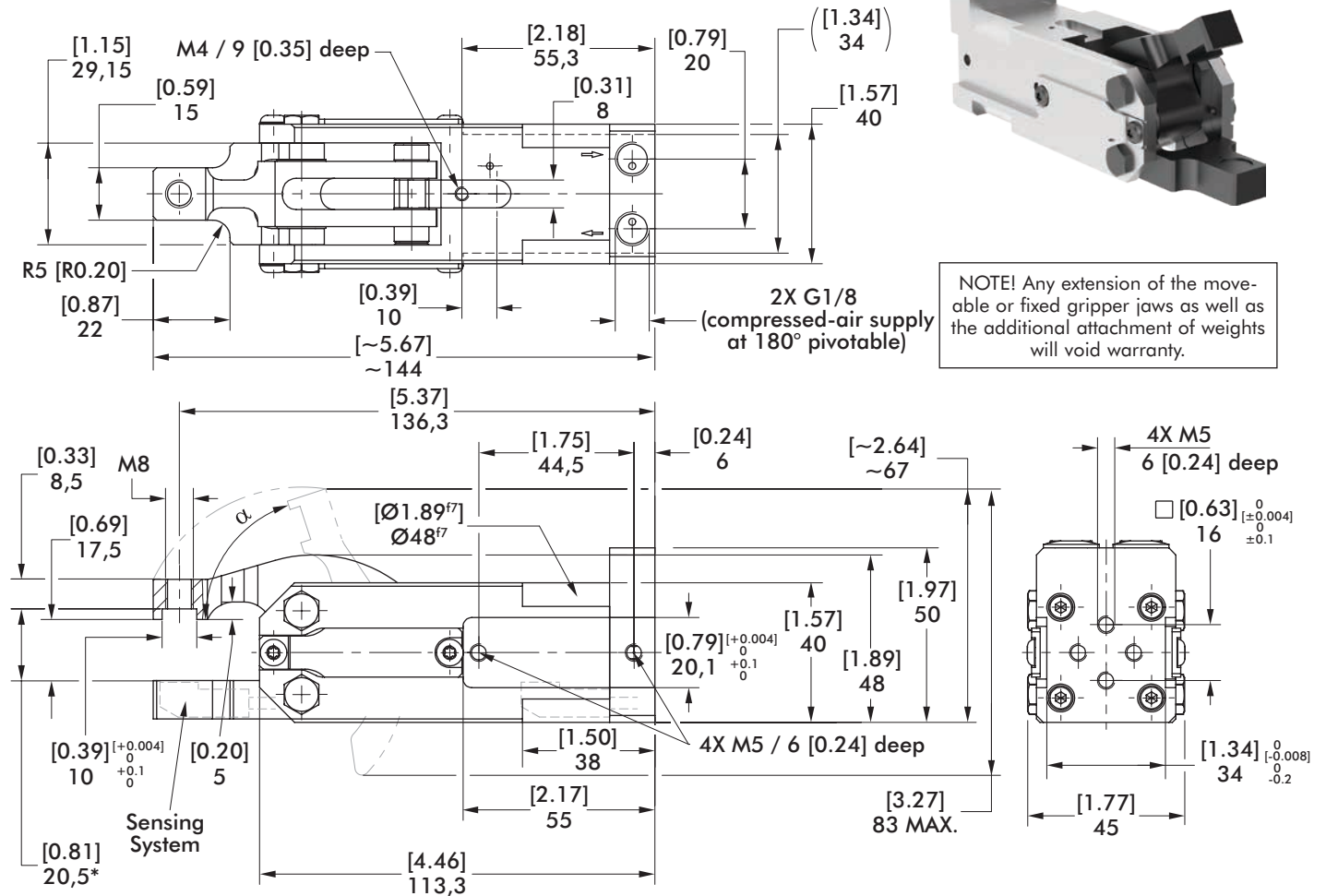


T-Coupler M12x1 for sensing system **GS**
Order Separately **7000-41161-000000**

84AF2.V.S SHORT LENGTH FIXED/MOVEABLE LOWER JAW

Cam Type Sheet Metal Grippers | Dimensions and Ordering Information

84AF2.V1S Short Length, Fixed Lower Jaw

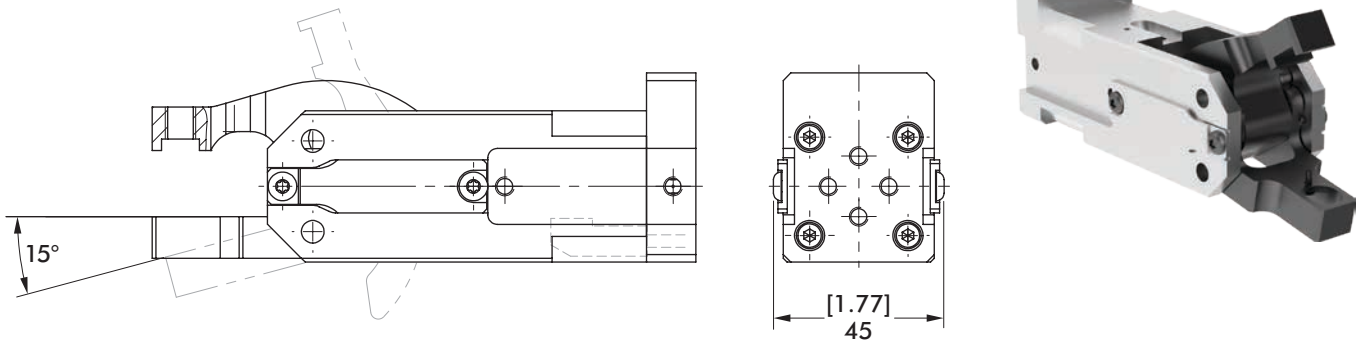


NOTE! Any extension of the moveable or fixed gripper jaws as well as the additional attachment of weights will void warranty.

Medium air, min. 3 bar, max. 6 bar. Operation with oil-free air is permissible.

* Note! Addition of gripper teeth height and thickness of the clamped plate must be 20,5 [0.81] mm. It might be necessary to use shim plates or to grind off the gripper teeth.

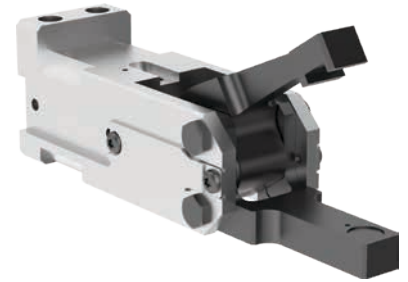
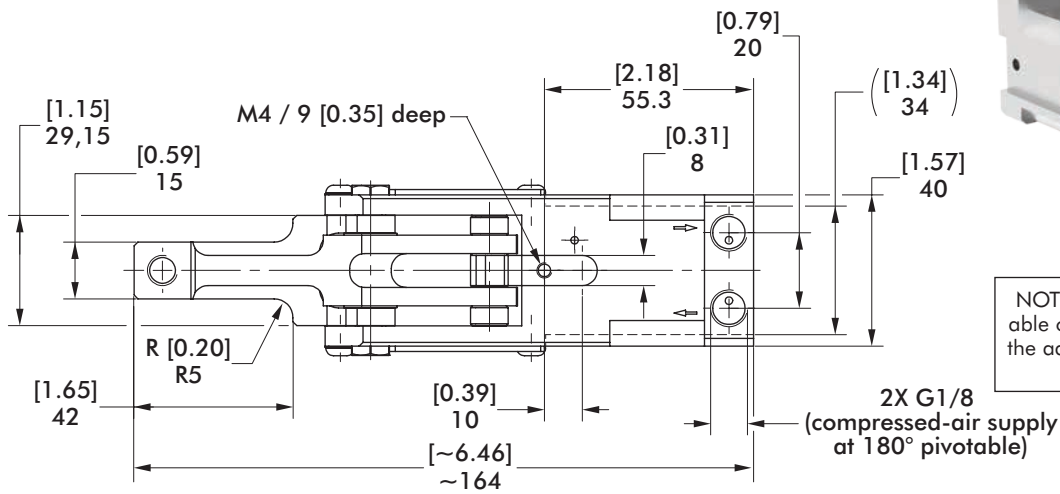
84AF2.V2S Short Length, Moveable Lower Jaw



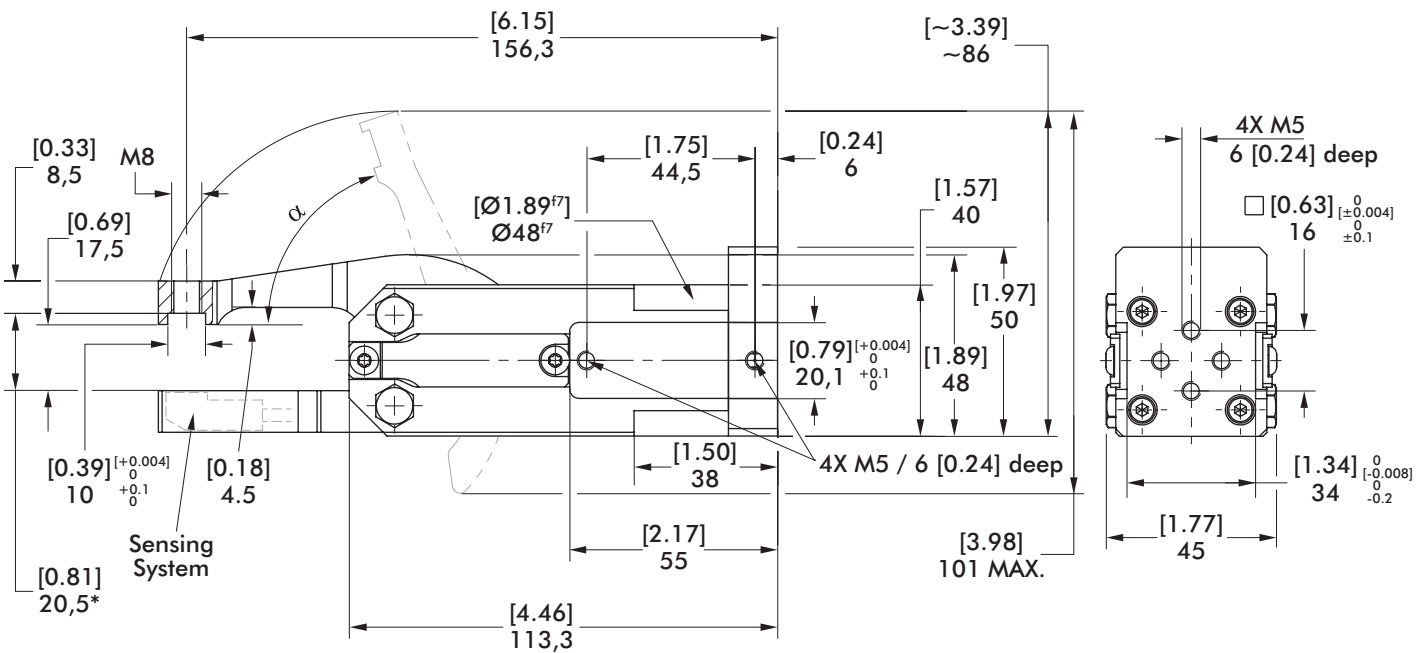
Model 84AF2.V1S / 84AF2.V2S	Opening Angle α		Clamping force at 6 bar ~N [lbf]	Weight Kg [lbs]
	Upper	Upper/Lower		
-	72°	72°/15°	820 [184]	0,6 [1.32]
X	30°	30°/15°		
Y	45°	45°/15°		

84AF2.V1M MEDIUM LENGTH, FIXED LOWER JAW

Cam Type Sheet Metal Grippers | Dimensions and Ordering Information



NOTE! Any extension of the moveable or fixed gripper jaws as well as the additional attachment of weights will void warranty.



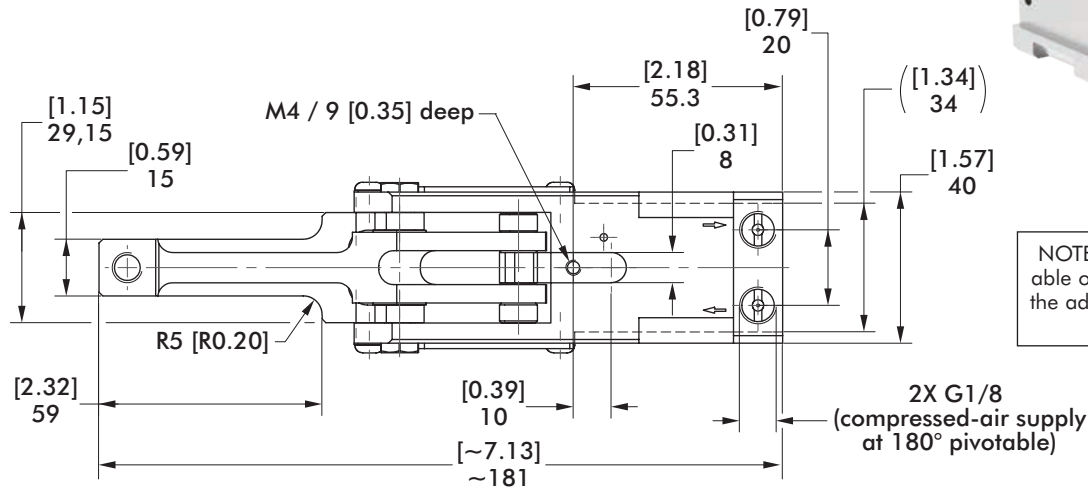
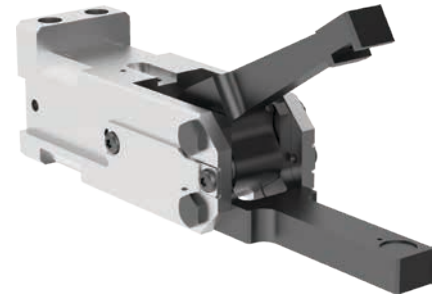
* Note! Addition of gripper teeth height and thickness of the clamped plate must be 20,5 [0.81] mm. It might be necessary to use shim plates or to grind off the gripper teeth.

Medium air, min. 3 bar, max. 6 bar.
Operation with oil-free air is permissible.

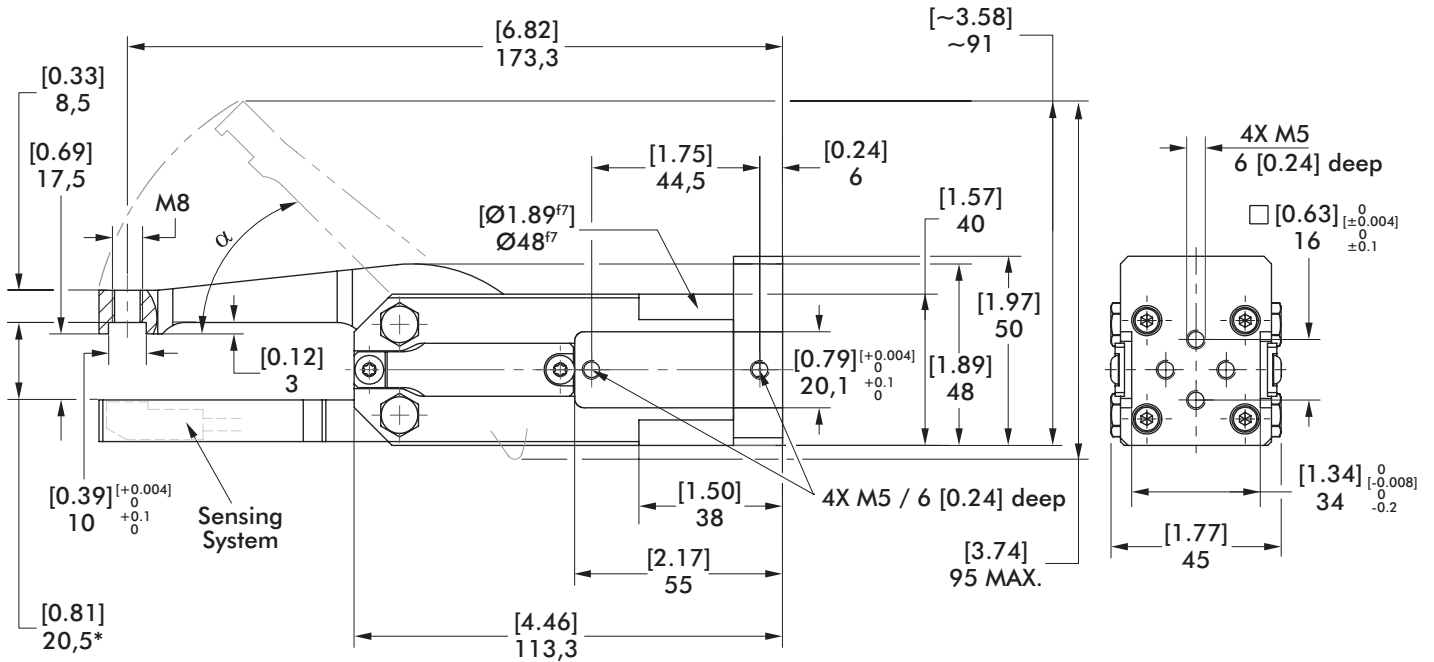
Model 84AF2.V1M	Opening Angle α	Clamping force at 6 bar ~N [lbf]	Weight Kg [lbs]
-	72°		
X	30°	560 [126]	0,62 [1.37]
Y	45°		

84AF2.V1L LONG LENGTH, FIXED LOWER JAW

Cam Type Sheet Metal Grippers | Dimensions and Ordering Information



NOTE! Any extension of the moveable or fixed gripper jaws as well as the additional attachment of weights will void warranty.



* Note! Addition of gripper teeth height and thickness of the clamped plate must be 20,5 [0.81] mm. It might be necessary to use shim plates or to grind off the gripper teeth.

Medium air, min. 3 bar, max. 6 bar.
Operation with oil-free air is permissible.

Model 84AF2.V1L	Opening Angle α	Clamping force at 6 bar ~N [lbf]	Weight Kg [lbs]
-	72°	300 [67.4]	0,65 [1.43]
X	30°		
Y	45°		