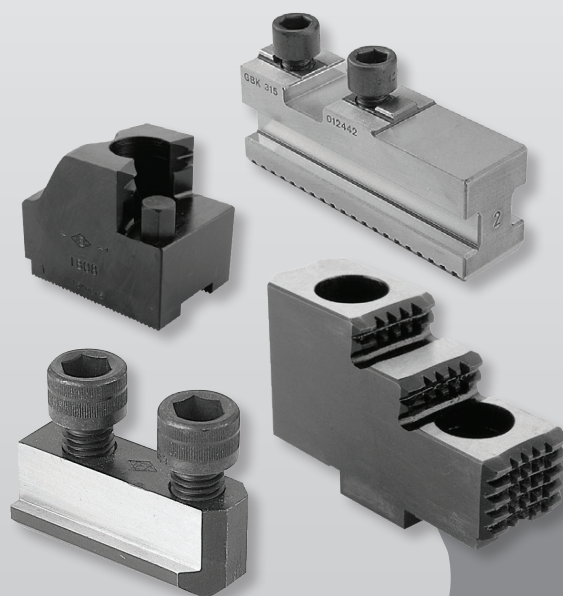




Tool-part

- Your tooling partner

2015 Prisliste Lagerliste

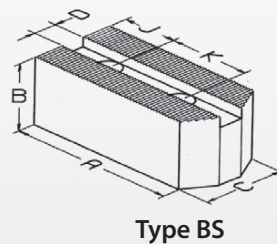
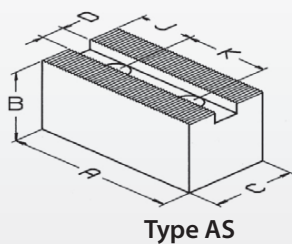
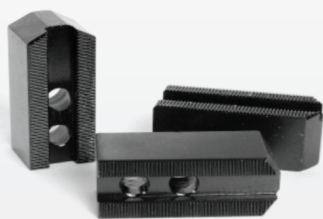


Hårde Bakker · Bløde Bakker

Gribe Bakker · Tilbehør

www.tool-part.dk

Tlf. 76 301 304



Bløde bakker 1,5 mm x 60 gr. · Stål: 080M15 (EN32)

B-204/205	Type	Lgd.	Højde	Bredde	Not				Bolt	DKK/ Sæt
		A.	B.	C.	D.	J.	K.	P.		
BR04	BS	45	25	25	10	13	14	4	M8	280
BB04	BS		40							350

B-206	Type	Lgd.	Højde	Bredde	Not				Bolt	DKK/ Sæt
		A.	B.	C.	D.	J.	K.	P.		
BA06	BS	72	30	30	12	15	20	13	M10	220
PT06	BS	82								290

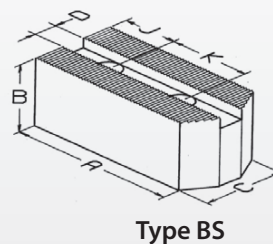
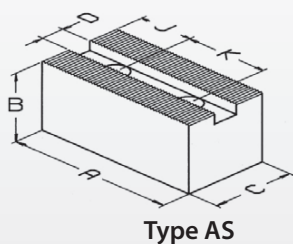
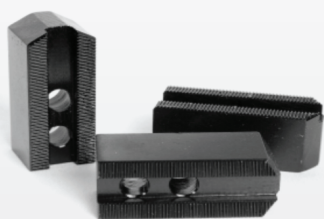
BO06	AS	72	35							230
BB06	AS		40							270
BC06	AS		50							290
DJ06	AS		60							310

B-208	Type	Lgd.	Højde	Bredde	Not				Bolt	Dkk/ Sæt
		A.	B.	C.	D.	J.	K.	P.		
BA08	BS	95	35	35	14	25	25	15	M12	250
PT08	BS	102	40			20				370

BO08	AS	95	40			25				250
BB08	AS		50							350
BC08	AS		60							380
DJ08	AS		80							430

B-210	Type	Lgd.	Højde	Bredde	Not				Bolt	Dkk/ Sæt
		A.	B.	C.	D.	J.	K.	P.		
BA 10	BS	110	40	40	16	30	30	17	M12	270
PT 10	BS	125								420

BO 10	AS	110	40							280
BR 10	AS		60							410
DJ 10	AS		80							510
BD 10	AS		100							630



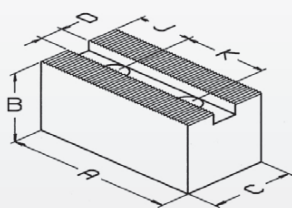
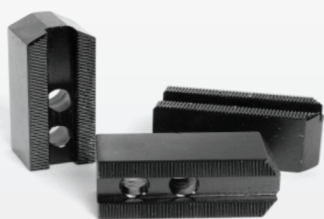
Bløde bakker 1,5 mm x 60 gr. · Stål: 080M15 (EN32)

B-212	Type	Lgd.	Højde	Bredde	Not	J.	K.	P.	Bolt	DKK/ Sæt
		A.	B.	C.	D.					
PT13	BS	145	50	50	21	40	30	18	M16	660
BR13	AS	130	50							410
DJ13	AS		80							750
BD13	AS		100							1.000

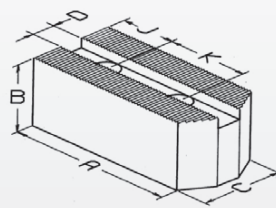
B-215	Type	Lgd.	Højde	Bredde	Not	J.	K.	P.	Bolt	DKK/ Sæt
		A.	B.	C.	D.					
BR15	AS	135	60	50	25.5	26	43		M20	740
BR16	AS		100							1.360

B-15/18	Type	Lgd.	Højde	Bredde	Not	J.	K.	P.	Bolt	Dkk/ Sæt
		A.	B.	C.	D.					
BO15	AS	165	80	60	22	37	43		M20	950
BC15	AS		100							1.470
DJ15	AS		125							2.090

B-21	Type	Lgd.	Højde	Bredde	Not	J.	K.	P.	Bolt	Dkk/ Sæt
		A.	B.	C.	D.					
BO18	AS	180	80	60	25	60	40		M20	1.590
BC18	AS		100							1.990
DJ18	AS		125							2.490



Type AS



Type BS

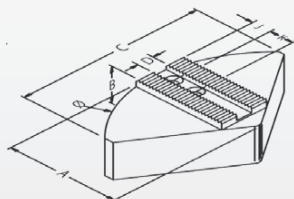
Bløde bakker 1,5 mm x 60 gr. · Aluminium: HE30TF

B-206	Type	Lgd. A.	Højde B.	Bredde C.	Not D.	J.	K.	P.	Bolt	DKK/ Sæt
AA06	AS	72	38	32	12	15	20		M10	440
AB06	AS		76							560

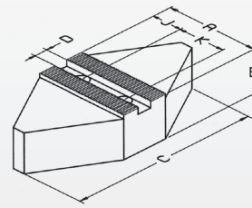
B-208	Type	Lgd. A.	Højde B.	Bredde C.	Not D.	J.	K.	P.	Bolt	DKK/ Sæt
AA08	AS	95	44	32	14	25	25		M12	510
AB08	AS		76							630
AC08	AS		102							730

B-210	Type	Lgd. A.	Højde B.	Bredde C.	Not D.	J.	K.	P.	Bolt	Dkk/ Sæt
AA10	AS	110	51	38	16	30	30		M12	660
AB10	AS		76							780
AC10	AS		102							880

B-212	Type	Lgd. A.	Højde B.	Bredde C.	Not D.	J.	K.	P.	Bolt	Dkk/ Sæt
AA13	AS	130	51	51	21	40	30		M16	720
AB13	AS		76							1.030
AC13	AS		102							1.180



Type ES



Type DS

Bløde bakker 1,5 mm x 60 gr. · Stål: 080M15 (EN32)

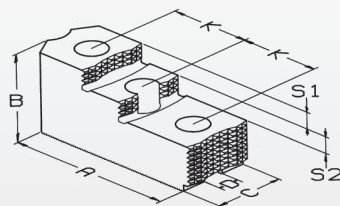
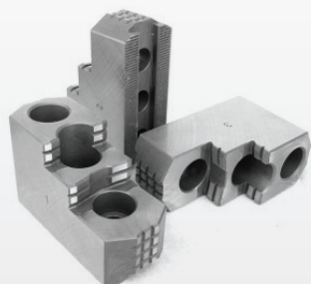
B-206	Type	Lgd.	Højde	Bredde	Not	J.	K.	P.	Bolt	DKK/
		A.	B.	C.	D.					Sæt
CN16	DS	60	60	120	12	15	20		M10	1.800
SG06	ES	76	76	Ø169		20				2.740

B-208	Type	Lgd.	Højde	Bredde	Not	J.	K.	P.	Bolt	DKK/
		A.	B.	C.	D.					Sæt
CN20	DS	89	64	150	14	15	25		M12	2.100
SG08	ES	99	76	Ø210		25				3.180

B-210	Type	Lgd.	Højde	Bredde	Not	J.	K.	P.	Bolt	Dkk/
		A.	B.	C.	D.					Sæt
CN25	DS	102	64	170	16	20	30		M12	2.520
SG10	ES	122	76	Ø254		27				3.860

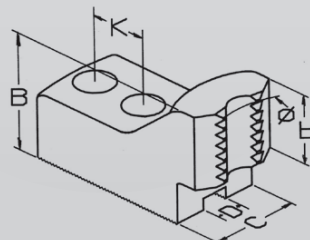
B-212	Type	Lgd.	Højde	Bredde	Not	J.	K.	P.	Bolt	Dkk/
		A.	B.	C.	D.					Sæt
CN33	DS	132	76	240	21	30	30		M16	3.940
SG13	ES	147		Ø304		34				5.370

B-15/18	Type	Lgd.	Højde	Bredde	Not	J.	K.	P.	Bolt	Dkk/
		A.	B.	C.	D.					Sæt
CN38	DS	152	76	280	22	37	43		M20	4.610



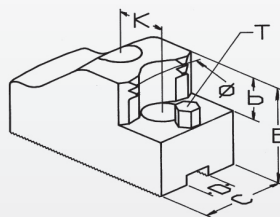
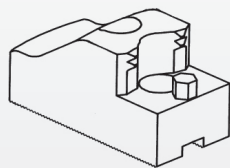
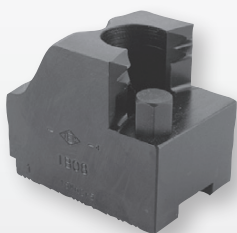
Hærdede bakker 1,5 mm x 60 gr. · Stål: 080M15 (EN32)

		Lgd. A.	Højde B.	Bredde C.	Not D.	K.	Bolt	DKK/ Sæt
B206	HB06A1	66	36	31	12	20		2.790
B208	HB08A1	86	51	35	14	25		3.390
B210	HB10A1	99	54	40	16	30		4.240
B212	HB12N1	103	52	50	21	30		4.690
B15/18	HB15A1	149	86	62	22	43		8.880
B21/24	HB18B2	160	90	80	25	60		11.130



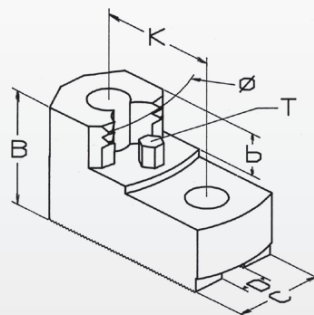
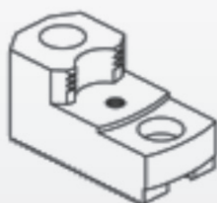
Hærdede Stangbakker 1,5 mm x 60 gr. · Stål: 080M15 (EN32)

		område.	B.	C.	D.	K.	DKK/sæt
B206	KK 16	13-33	39	35	12	20	2.220
B208	KK 20	16-45	49	40	14	25	2.340
B210	KK 25	25-65	49	40	16	30	2.420
B-212	KK 33	27-88	49	50	21	30	2.810



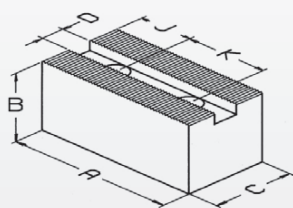
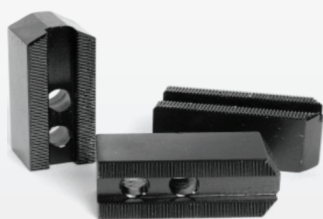
Hærdede Gribebakker 1,5 mm x 60 gr. · Udvendig Opspænding

B-206		område.	b.	B.	C.	D.	K.	T.	DKK/sæt
	LA 03	26-47	20	49	35	12	20	M6	2.390
	LA 04	37-67							2.390
	LA 06	50-81							2.390
	LA 07	64-96							2.390
	LA 09	80-112							2.390
B-208		område.	b.	B.	C.	D.	K.	T.	DKK/sæt
	LB 03	31-68	20	49	40	14	25	M6	2.500
	LB 06	60-96							2.500
	LB 09	87-125							2.500
	LB 12	114-152							2.500
	LB 15	155-200							2.710
B-210		område.	b.	B.	C.	D.	K.	T.	DKK/sæt
	LC 04	44-85	25	59	40	16	30	M8	2.710
	LC 08	82-125							2.710
	LC 13	125-169							2.710
	LC 17	168-212							2.710
	LC 20	206-248							2.710
	LC 24	246-290							2.710
B-212		område.	b.	B.	C.	D.	K.	T.	DKK/sæt
	LE 05	48-112	25	59	50	21	30	M8	2.980
	LE 10	102-168							2.980
	LE 16	165-233							2.980
	LE 23	232-300							2.980
B-15 / 18		område.	b.	B.	C.	D.	K.	T.	DKK/sæt
	LF 05	50-108	33	79	60	22	43	M8	3.910
	LF 10	99-162							3.910
	LF 16	160-224							3.910
	LF 22	220-285							3.910
	LF 28	279-345							3.910
	LF 34	339-404							3.910

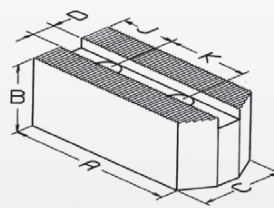


Hærdede Gribebakker 1,5 mm x 60 gr. · Indvendig Opspænding

B-206		område.	b.	B.	C.	D.	K.	T.	DKK/sæt
	MA 05	45-69	20	49	35	12	20	M6	Sp.
	MA 06	49-80							Sp.
	MA 07	68-99							Sp.
	MA 09	90-122							Sp.
B-208		område.	b.	B.	C.	D.	K.	T.	DKK/sæt
	MB 06	50-85	20	49	40	14	25	M6	Sp.
	MB 08	78-115							Sp.
	MB 11	110-148							Sp.
	MB 14	139-178							Sp.
B-210		område.	b.	B.	C.	D.	K.	T.	DKK/sæt
	MC 06	61-103	25	59	40	16	30	M8	Sp.
	MC 10	100-143							Sp.
	MC 14	140-185							Sp.
	MC 18	180-224							Sp.
B-212		område.	b.	B.	C.	D.	K.	T.	DKK/sæt
	ME 08	78-145	25	59	50	21	30	M8	Sp.
	ME 14	142-209							Sp.
	ME 20	201-269							Sp.
B-15/18		område.	b.	B.	C.	D.	K.	T.	DKK/sæt
	MF 10	100-162	33	79	60	22	43	M8	Sp.
	MF 16	160-224							Sp.
	MF 22	222-287							Sp.
	MF 28	280-345							Sp.



Type AS



Type BS

Bløde bakker 1/16 x 90 gr. · Stål: 080M15 (EN32)

6"	Type	Lgd.	Højde	Bredde	Not	J.	K.	P.	Bolt	DKK/
		A.	B.	C.	D.					Sæt
CH17	AS	70	40	30	14	16	16,5		M10	270
CI17	AS		60							370

8" - 10"	Type	Lgd.	Højde	Bredde	Not	J.	K.	P.	Bolt	DKK/
		A.	B.	C.	D.					Sæt
BN75	BS	80	40	40	17	15	22	20	M12	420
BN85	BS	90								430

BN70	AS	70	60	40	17	15	22			290
BN80	AS	90								290
BN90	AS		60							330

CH21	AS	90	40	40	17	20	23		M12	310
CI21	AS	90	60	40						420

10" - 12"t	Type	Lgd.	Højde	Bredde	Not	J.	K.	P.	Bolt	Dkk/
		A.	B.	C.	D.					Sæt
BN11	BS	120	50	50	21	20	28	24	M16	570
BN15	BS	140								620

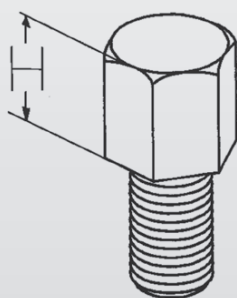
BN10	AS	120	50	50	21	20	28			420
BN12	AS		80							530

CH25	AS	110	50	50	21	20	30		M16	410
CI25	AS	110	70	50						580

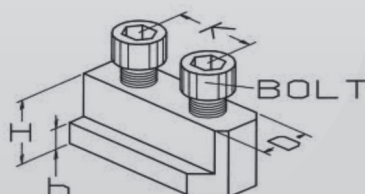
15"	Type	Lgd.	Højde	Bredde	Not	J.	K.	P.	Bolt	Dkk/
		A.	B.	C.	D.					Sæt
BN13	AS	140	90	60	25,5	30	35		M20	1.180
BN23	AS	155	90	60	25,5					1.140



Stopbolte f/gribbakker



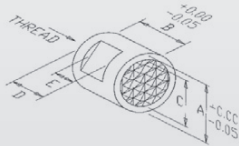
	M.	H.	DKK/stk
IT 05	M6	5	40
IT 10	M6	10	40
IT 15	M6	15	40
IT 20	M6	20	40
IU 05	M8	5	50
IU 10	M8	10	50
IU 15	M8	15	50
IU 20	M8	20	50
IU 25	M8	25	50



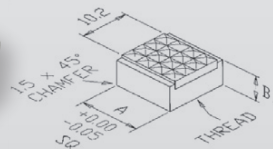
T-Normøtrikker

		D.	H.	h.	K	Bolt	DKK/stk
B-204/5	GP03	10	15	5,5	14	M8x20	260
B/BB-206	GP07	12	18,5	7,5	20	M10x25	260
N-08	GP08	14	23	8	25	M12x30	290
B/BB-208	GP09	14	20,5	8,2	25	M12x30	290
N-10	GP10	16	23	8	30	M12x30	320
B/BB-210	GP11	16	21,5	8,5	30	M12x30	320
HOH12	GP12	18	27,5	9,5	30	M14x35	380
B-212	GP13	21	28	11,5	30	M16x35	380
BB212	GP14	21	22,8	11,5	30	M16x30	390
B-15/18	GP15	22	45,5	16,5	43	M20x55	600
B21	GP21	25	45	19	60	M20x55	670

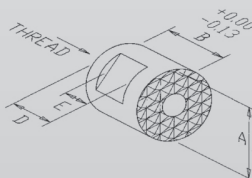
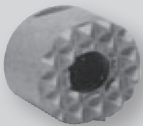
Hærdede Indsatse



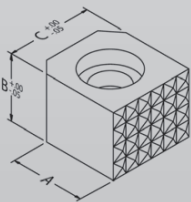
	A.	B.	C.	D.	E.	M.	DKK/stk
EU2A	12,7	9,5	9,5	6,7	4,7	M6	120
EU2B	12,7	12,7	9,5	8,3	4,7	M6	130
EU2C	12,7	16,5	9,5	9,9	4,7	M6	130
EU5A	15,9	9,5	12,7	6,7	4,7	M6	140
EU6A	19	9,5	15,9	6,7	4,7	M6	170



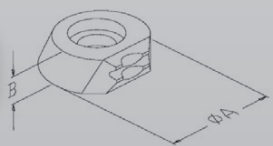
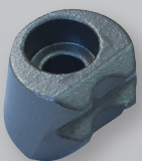
	A.	B.	M.	DKK/stk
EU7A	12,7	9,5	M6	160



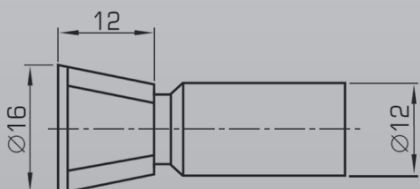
	A.	B.	C.	D.	M.	DKK/stk
EW10	12	10	6,8	4,7	M5	140
EW15	12	12	8,4	4,7	M5	150
EW20	16	10	6,8	4,7	M6	190
EW25	20	10	6,8	4,7	M6	210
EW30	25	10	6,8	4,7	M6	260



	A.	B.	C.	M.	DKK/stk
EW70	12	6	12	M4	200
EW71	12	10	12	M4	200
EW72	12	12	12	M4	210
EW73	20	6	20	M8	270
EW74	20	12	20	M8	290



	A.	B.	M.	DKK/stk
EZ05	16	10	M4	330



	A.	B.	M.	DKK/stk
EZMT				1.900



Industrivej 5E
DK-7120 Vejle Ø
Tlf. +45 76 301 304
www.tool-part.dk