



Cable seals for efficient enclosure production

REPORT FROM CABINET AND ENCLOSURE MANUFACTURER IN DENMARK

Wilhelmsen Technical Solutions A/S designs and supplies electrical enclosures already equipped with Roxtec ComSeal™. The compact cable entry seal enables the routing of 32 cables in just one opening,

which makes it an extremely smooth and area efficient replacement of up to 32 traditional cable glands. "We save time and money in our production," says Hans Cosmus, Project Manager Installation.

"At the same time we optimize the possibilities for our customers. The flexibility of Roxtec is a great advantage."



Wilhelmsen Technical Solutions A/S in Odense, Denmark, is part of the maritime services concept of the global car-carrier group Wilh. Wilhelmsen ASA. The complete service concept covers electrical and automation control, climate management, rescue and safety systems and environmental solutions.

The goal is to deliver all these services and equipment to ships and rigs as one high quality package. "We design and supply tailor-made cabinets and enclosures to customers and shipyards worldwide," says Karsten L Madsen, Sales Manager Denmark. "We also install and commission equipment onsite."

Specifies Roxtec seals

In order to ensure quality and increase efficiency, Wilhelmsen Technical Solutions A/S uses Roxtec cable transits as standard solution. The flexible seals do not only allow them to provide their customers with a certified solution against humidity, salt and pressure, but also to simplify their own production.

"We use one Roxtec cable seal instead of making 32 holes for cable glands," says Hans Cosmus. "If you count on a project with one hundred enclosures, you see that we can save time and cut our lead times."

Roxtec reduces the number of possible leak paths and enables the use of smaller, less expensive

cabinets. This, in turn, means several direct mutual gains – in cost, space, weight, materials and logistics.

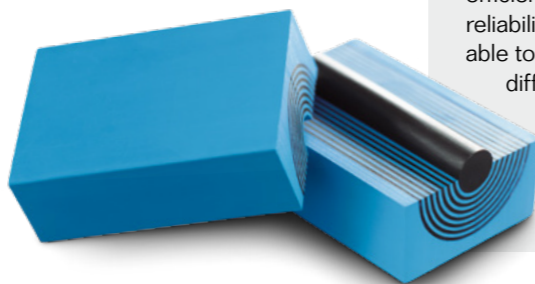
"With Roxtec, we are able to install the cable transit quicker and with fewer tools, and we have been able to reduce the number



The enclosure manufacturer can easily satisfy their customers by leaving room for additional cables. Roxtec cable transits simplify retrofit and help ship owners extend the lifespan of a ship's operation.

ROXTEC SEALING SYSTEM

Roxtec cable and pipe seals ensure safety, efficiency and operational reliability. They are adaptable to cables and pipes of different sizes thanks to Multidiameter™, a solution based on modules with removable layers.



WHY ROXTEC?

Because of the flexibility that makes Roxtec seals outstanding. There are sub-suppliers in the cabinet manufacturing industry that can include cable transits, but their solutions are not flexible enough.

Would you recommend Roxtec to others?

Yes, we have a very positive attitude towards Roxtec products. That, I say, is absolutely true.

Hans Cosmus, Project Manager Installation, Wilhelmsen Technical Solutions A/S



"Roxtec is good for us and for our customers"

Hans Cosmus, Wilhelmsen Technical Solutions A/S



ⓘ *Wilhelmsen Technical Solutions A/S delivers enclosures with the Roxtec ComSeal™ frame attached together with sealing modules and assembly gel. This makes it easy for installers to do the job onsite.*

ⓘ *"Roxtec is an easy product to work with," says Finn Petersen of Wilhelmsen Technical Solutions.*

of cabinet types in stock," says Jesper Hansen, Project Manager Production. Before delivery, the attached frames are filled with loose modules ready for cable installation in the field.

Ideal for retrofit work

Wilhelmsen Technical Solutions A/S has a flying squad as well, ready to undertake maintenance

and refurbishment projects anywhere in the world. When making changes and adding signal and power cables for control and management systems, it is clear that Roxtec cable entry seals are a good choice. Retrofitting with Roxtec does not require any hot works, which is appreciated by all players involved. "Roxtec is more flexible than other multi-cable transits," says Hans Cosmus. "It often happens that customers realize that they need to install two more cables when we have already delivered the enclosure. Fortunately, we use Roxtec and provide them with the possibility to add cables, even late."

Facts

Project type Manufacture of cabinets and enclosures for marine and offshore control equipment

Involved companies Wilhelmsen Technical Solutions A/S – design, engineering and installations

Applications Sealing of signal and power cables of different sizes in cabinets and enclosures

Sealing requirements Watertight
Gas-tight

Roxtec products Roxtec ComSeal™ – compact frames in different sizes including adaptable sealing modules

Reasons for choosing Roxtec

- Save time through quick installation
- Make fewer holes in the cabinets
- Reduce cabinet types kept in stock
- Minimize the need for installation tools
- Save space and use cheaper cabinets
- Be prepared for last minute changes
- Increase supplier competitiveness



Roxtec marine and OEM industry references

ABB, Alstom, Azimut Benetti, Bergen Group, Daewoo Shipbuilding & Marine Engineering, Dalian Shipyard, FANUC Robotics America, Fincantieri, GE, Hitachi, Hyundai Heavy Industries, Jinling Shipyard, Meyer Werft, Samsung Heavy Industries, Perini Navi, Siemens, STX Europe, STX OSV, UK Navy, US Navy, Italian Navy, Chinese Navy, Danish Navy.



Roxtec International AB
Box 540, 371 23 Karlskrona, SWEDEN
PHONE +46 455 36 67 00, FAX +46 455 820 12
EMAIL info@roxtec.com, www.roxtec.com