



The Trailer Company.



## S.KO Box Body Vehicles

Refrigerated Freight and Secure Transport.

Trailer

Services

Technology

*just more.*



# Contents.

Outstandingly Safe Box Body Vehicles for Long-Distance Transport.

## 3 Introduction

- 3 The 6th Generation S.KO COOL.

## 4 The Performance Promise

- 4 Summary of Your Advantages.
- 5 Precision in Series Production of Customised Vehicles.
- 6 Cargobull Validation Center (CVC).
- 7 The Body Is the Basis of Success.
- 8 Premium Refrigeration Units are Our Standard.

## 9 Interior Equipment

- 9 The Patented FERROPLAST® Panels.
- 10 The S.KO Interior.
- 11 Optimised Air Circulation.
- 12 Hygiene and Environment Certificates.

## 13 Special Fittings

- 13 Equipment for Your Load Securing.



## 14 Special Equipment

- 14 The Double-Decker Loading Equipment.
- 15 Refrigerated Boxes With Meat Rack Equipment.
- 16 Investment Security Begins at the Rear.
- 17 The Aerodynamics Kit.
- 18 S.KO COOL – Strong Box Vehicles for Special Demands.
- 19 Specialist for Individual Transport Solutions.
- 20 Complete Sets of Equipment in the Utility Packages.

## 21 The Technologies

- 21 ROTOS® DriveTechnology.
- 22 MRH Pneumatic Suspension.
- 23 Equipment for Your S.KO.
- 24 S.KO Chassis.

## 25 Dry Freighter

- 25 S.KO EXPRESS.
- 26 Equipment for Your Dry Freight.

## 27 Folding Wall Box Trailers

- 27 S.KO FW EXPRESS with Folding Wall.
- 28 S.KO FW COOL with Folding Wall.

## 29 Services

- 29 Services for Your Vehicle.

## 30 Contact

- 30 Your Contacts.

## 31 Technical Specifications

- 31 Dimensions & Data.

## Europe's Most Favourite Refrigerator on Wheels. The 6th Generation S.KO COOL.

Refrigerated freight is a demanding freight. Strict temperature and hygiene regulations place special demands on the performance and reliability of transport vehicles.

The S.KO COOL is designed to meet these demands and is perfectly tailored to any challenges you meet in long-distance transport. That has made it the first choice for European freight carriers for many years.

The sixth generation of our success model is the best S.KO that there has ever been. Improved insulation properties, lower operating costs and countless detailed improvements make this trailer a real deliverer of success to your company.

Let yourself be convinced – the S.KO is sure to convince you. On the road, in daily use and on your balance sheet.

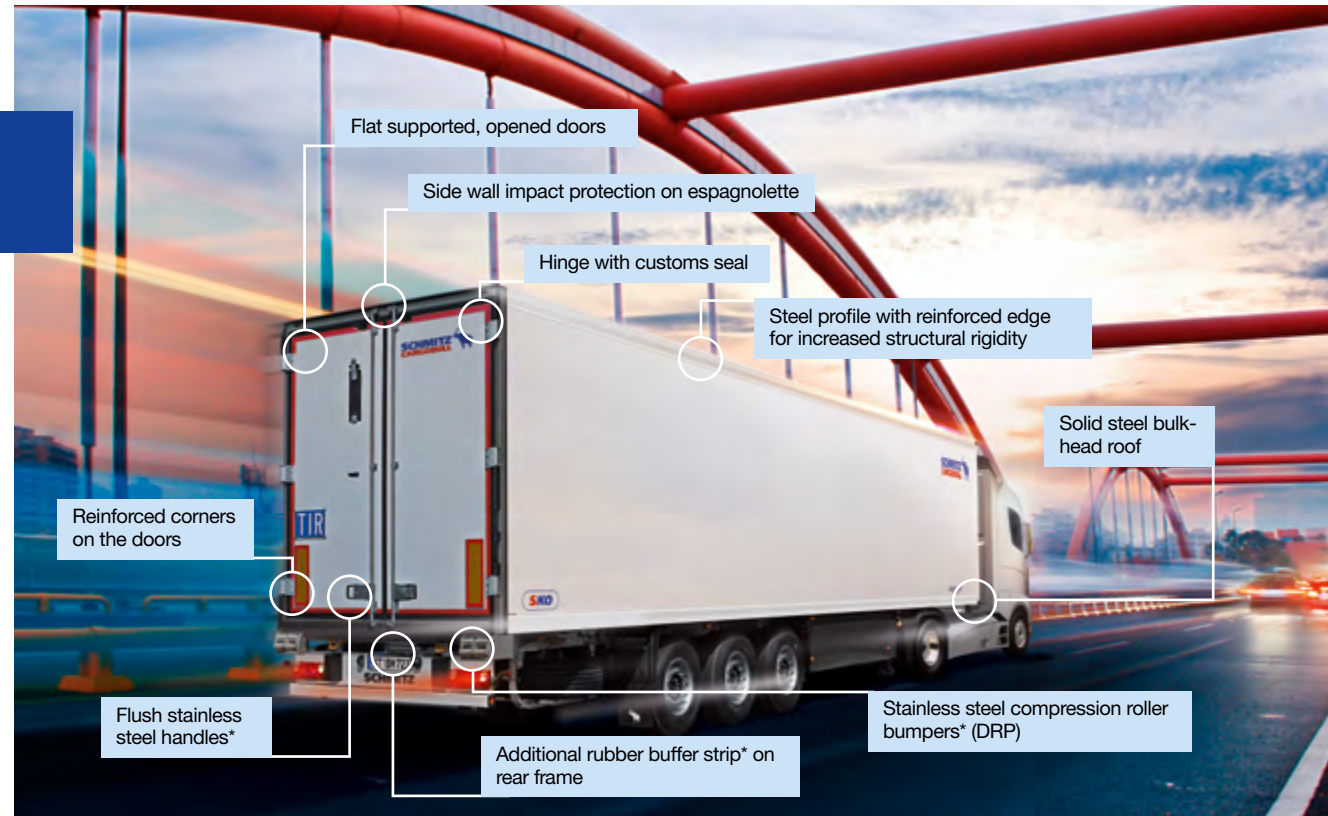


## Complete Coverage.

Summary of Your Advantages.

To increase the worth of the S.KO for you we have protected the sixth generation even better against a loss in value.

- **Thanks to the improved insulation** of our FERROPLAST® box bodies you can save hard cash on the operation of your refrigeration unit.
- **Aerodynamic cladding\*** on the running gear improves your fuel efficiency and enables savings of up to 4 %.
- **Solid roller bumpers\* and Dynamic Ramp Protection** protect your trailer against damage during hard loading operations at the ramp.
- **And best of all:** despite all these protective measures the new S.KO does not weigh an ounce more than its predecessor.



Stable temperature connection. Improved attachment of the portal to the rear of the trailer.



Robust against damage. Stainless steel reinforced protective strip\* under the hinges.



A double rubber buffer rail\* at the rear protects the body and the espagnolettes.

\* Optional equipment

## Mass Success.

Precision in Series Production of Customised Vehicles.

Schmitz Cargobull has been producing top-quality box body vehicles for over 60 years. Our products have received numerous awards and offer you a customised vehicle with the reliability of series production. Customised, because our modular system enables you to have the perfect vehicle for your work. Reliable, because we incorporate the combined knowledge of our own developers directly into our production and systematically minimise errors at both levels.

We underpin our high quality standards with innovations. The most important components of the S.KO – the box trailer, axle and refrigeration unit – carry our signet.

Pioneering technology is also represented by our FERROPLAST® panels. The NX-17 foam core keeps the cold inside the box body. And metal covering layers maintain the value of your vehicle – tested and proven over 25 years.



Production cycles Made in Germany – the digitally-controlled production logistics system provides quality in series production.



FERROPLAST® panels are foamed along the entire length in a single step.



Schmitz Cargobull ROTOS® axles stand out due to our high depth of manufacturing with our own axle assembly section.

## 1,000,000 km of Experience – Before You Even Start.

Cargobull Validation Center (CVC).

You can always depend on the reliability of a Schmitz Cargobull trailer: Even before we produce new developments in series, they have already proven themselves over millions of kilometres.

Our in-house test centre, the Cargobull Validation Center, is unique in the trailer industry. Our prototypes undergo test runs on a road simulator under varied road and loading conditions. During this, the body and running gear are subject to a load of up to 40g.

The knowledge gained is fed directly into further development. You thus always benefit from fully developed and reliable products from Schmitz Cargobull.



### Vehicle testing:

Our test engineers precisely analyse the effects of extreme stress and loads on the chassis, running gear and box body. Complex stress tests involving the entire box structure and extreme driving situation simulations are all part of the testing process.



In the early design stage initial load tests are simulated on the computer using the FEM, Finite Element Method.



Precision in every detail: CAD-supported processes when developing the double-decker loading equipment for box vehicles.

## Top Technology for Your Daily Routine Work.

The Body Is the Basis of Success.

The recipe for the success of the S.KO is simple: It makes you successful.

### Strong as an aeroplane

The glue-jointed body design of our FERROPLAST® box bodies is based on aeroplane and yacht construction. It is self-supporting and extremely warp-resistant. For top operational safety without any unnecessary extra weight – kilometre after kilometre.

### Energy efficient

Unrivalled and improved once again – the S.KO body keeps the cold inside the body. The PU foam core of the FERROPLAST® panels stands out thanks to an improved K-value. For optimal cooling with low fuel consumption – tour after tour.

### Age-resistant

Even after a number of years, our box bodies maintain what we promise you today. Vapour-diffusion tight metal covering layers protect against a loss in effectiveness due to ageing. For a consistent quality of transport – year after year.



Flat handles ensure that the wing doors fit flush to the sides.



Better, because invisible: The interior corner reinforcements in the doors increase the stability and prevent damage.



The new hinges for a narrow 270° opening angle. The patented custom seal is clean and safe.

# Indisputable Refrigeration Chains. Premium Refrigeration Units are Our Standard.

The refrigeration units ensure that your freight is always maintained at a perfect temperature. Parallel climatic control and documentation in the new S.KO guarantee a permanent and optimal cooling of your freight.

For the cooling equipment select your transport refrigeration unit from the programmes of leading manufacturers, such as Thermo King and Carrier – on request also as a consumer-friendly Eco variant or with low-noise, PIEK-certified devices.

The seamless documentation of your refrigeration data is carried out by TrailerConnect®: The independent trailer telematics system gathers exact measurements from the temperature recorder in your refrigeration unit using cold and humidity sensors. These can be called up and archived at any time. An automatic alarm warning by text message or e-mail when the refrigeration chain has been broken is also available as an option.



Conventional or digital temperature recorders for indisputable proof in accordance with DIN EN 12830.

## TrailerDataTechnology. Always Informed.

Reliable monitoring: Multiple sensors and a temperature recorder measure and document proof of an uninterrupted refrigeration chain. The TrailerConnect® interface enables a manufacturer-independent connection to the trailer telematics system.



The TrailerConnect® Interface serves as a digital temperaturerecorder providing indisputable proof. It is perfectly compatible with TrailerConnect®, our in-house trailer telematics system.



**TRAILERCONNECT®**  
TrailerDataTechnology



## Market Leader in ThermoTechnology. The Patented FERROPLAST® Panels.

The quality of food goods in transport relies on the refrigerated box body. We have combined all of the high-quality components of our patented box body panels under the name FERROPLAST® ThermoTechnology.

- **Rapid temperature adaptation:** The box body's metal covering layers adjust to the cooling temperature more quickly than GRP. As a result, you require less time and energy to reach the required level of refrigeration.
- **Outstanding insulation:** Thanks to the metal covering layers, the polyurethane core of our panels is up to 12% thicker than conventional GRP constructions. The refrigeration temperature is maintained for a longer period time. You need less cooling and save more energy.
- **Smooth, dent-resistant interior walls:** Interior covering layers with HDR (High Dent Resistance) increase the surface dent resistance. This keeps the interior in perfect condition for longer. (Optional)
- **Permanent value retention:** Especially over the long term, FERROPLAST® panels have two major advantages over GRP. Metal dents but does not shatter, thus retaining your box body's full insulation. In addition, the vapour diffusion-tight metal covering layers prevent the absorption of moisture, protecting against the accumulation of additional weight and preventing the foam core from losing efficiency. This pays off. Through low operating costs and high resale values.



### ThermoTechnology. The Right Insulation for Your Vehicle.

FERROPLAST® bodies offer you solid added financial value. Approximately 50 % market share for box semitrailers in Europe proves their quality.

FERROPLAST® combines the increased insulation of new NX17 polyurethane hard foam with the durable and resistant covering on both sides made of multiple layers of coated metal.



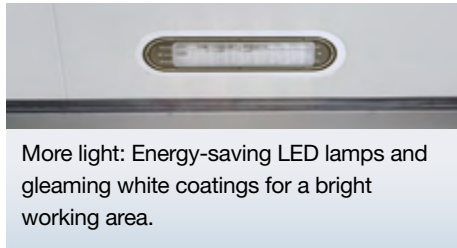
Optimal wall thicknesses with flush-mounted fittings for maximum interior capacity through individually adapted FERROPLAST® Panels.

## Our Contribution to Good, Safe Workplaces. The S.KO Interior.

Exemplary cleanliness, hygiene and safety are the top quality criteria for refrigerated freight. The S.KO interior has been tailor-made to meet these demands.

The bright tarpaulin surfaces make hygienic transport easier. Seamless transitions between the wall, floor pan, scuff rails and grid rails enable easy, residue-free cleaning and minimise the risk of injury and damage.

The S.KO naturally meets the standards of all significant transport certificates: ATP FRC class, TÜV South, German Lloyd, CEMA FROID and the Pharmaserv seal.



\* Optional equipment

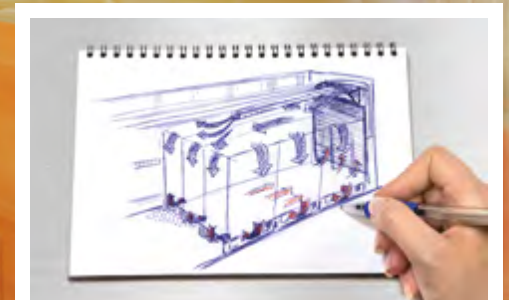
## Set Up for the Correct Temperature. Optimised Air Circulation.

The quality of your transport services is directly related to the quality of the air circulation in the box body. The S.KO offers you an even climate throughout the length of the vehicle in accordance with FRC standards.

The circulation wall on the front bulkhead ensures an uninterrupted circulation of air. Distance profiles and a pallet stop protect the bulkhead and the refrigeration unit from damage.

Three flexible cooling ducts under the roof ensure an even distribution of the cooling air. They may be shortened using a zip fastening.

Your box body can be turned into a flexible multi-temperature transporter with the new mobile, swivelling partition. Precision-closing seals guarantee a consistent temperature. You can benefit from the simple, quick handling brought about by an improved coordination of the pressure springs and a display for the locking system.



Uniformly cool: flexible cooling ducts for the distribution of cold air at roof level.



Flow-optimised: the circulation wall for rapid air circulation.



Two temperature zones: adjustable, swivelling partition\*.

\* Optional equipment

## Built-In Consumer Protection. Hygiene and Environment Certificates.

The S.KO makes no compromises when it comes to hygiene for the transport of food-stuffs and pharmaceuticals. Its interior more than fulfils the strict demands on cleanliness from HACCP (Hazard Analysis and Critical Control Points) and IFS (International Food Standards Logistics).

Cleaning with a high-pressure cleaner is simple: The box body is 100 % sealed all round, the floor can withstand a localised load of up to 4.5 t, the water drain and seamless transitions between the wall, floor pan, scuff rails and grid rails enable easy, residue-free cleaning of the interior.

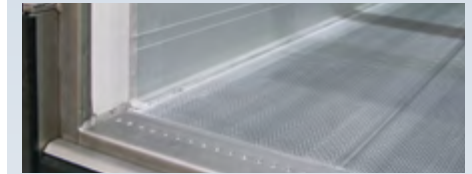
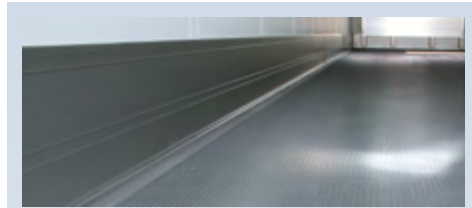
When in operation the S.KO also protects consumers and the environment. Thanks to a quiet running floor it fulfils the criteria of the PIEK standard during loading and unloading.



Four-lip door seal to perfectly seal the box body.



Also PIEK certified on request: Low-noise refrigeration units and quiet running floors reduce the noise pollution in residential areas to under 60 dB (A).



The all-round scuff rail (picture above) in the welded floor pan is partially recessed. As a result you retain the full loading width of 2,460 mm and gain better insulation through thicker side walls. The vertical PVC strip is impact-proof and keeps a stable temperature. It closes off the rear and avoids thermal bridges to the metal frame of the rear portal. The quiet running floor\* also meets the PIEK standard.

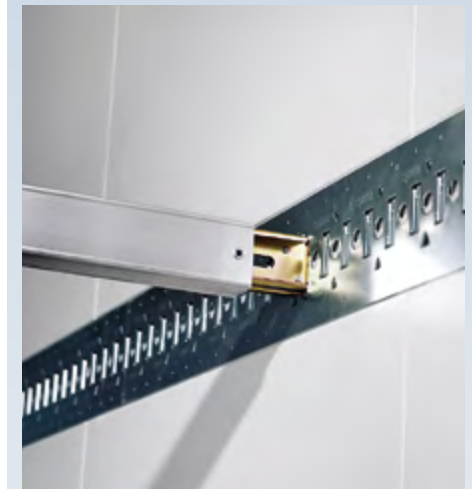


The multiple coating of the metal surface layers with corrosion-resistant fittings ideal for cleaning. The standard aluminium, barley grain structured floor with a welded transition to the all-round scuff rail is liquid-tight and simplifies quick cleaning of the floor pan.

\* Optional equipment

## Built-In Risk Management. Equipment for Your Load Securing.

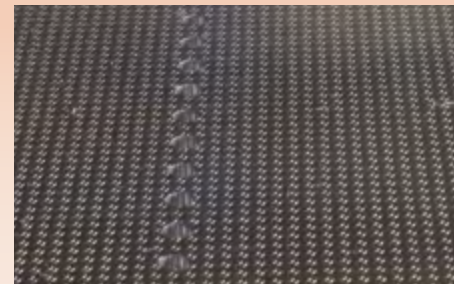
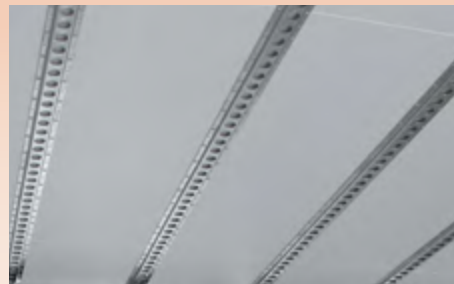
From our own experience we know that good load securing must be quick and easy. Because the greatest transport risks are a result of user error or unsecured loads. We prevent this danger – through self-explanatory and time-saving solutions.



Flush-mounted load securing rails for horizontal clamping bars and tensioning belts.



Special lashing straps can also be used in the double-decker rails for additional load securing.



Interlocking securing: Perforations milled into the floor and into the perforated rails in the roof for vertical telescopic rods.



Telescopic rods for load securing.

## Additional Storage Space on the Second Level. The Double-Decker Loading Equipment.

Double your capacity. With our double-decker loading equipment you increase your loading space by up to 100%. And thus your potential payload.

- **Optimal for non-stackable freight.** The double-decker loading equipment permits seamless loading on two levels- whose height can be variably adjusted. In this way you can transport up to 66 Euro pallets instead of 33.
- **1,000 kg load bearing capacity per beam for 8 kg empty weight.** Thanks to the low weight the payload remains almost unchanged.
- **Simple operation.** The beams are infinitely adjustable and can be fitted by just one person without any problems. They are quickly locked under the roof for high pallets – with space for the ventilation ducts.



Easier handling. The support beams in the new double-decker system\* slide lightly and securely in their guide rails.



Space for 66 pallets instead of 33. The double-decker system with 1,000 kg payload per beam.



The new double-decker system quickly creates space for more pallets at a reduced overall weight.

\* Optional equipment

# Meat is a Matter of Trust.

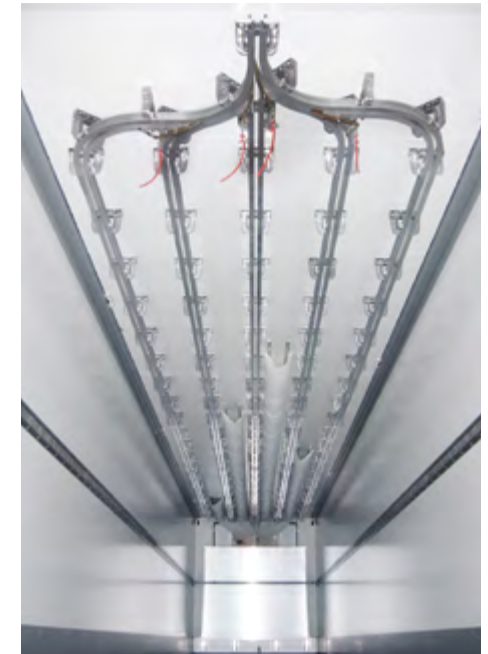
Refrigerated Boxes With Meat Rack Equipment.

The S.KO COOL provides ideal conditions for a refrigerated box with meat racks with its sturdy self-supporting body. The roof and side walls of the FERROPLAST® box body are especially reinforced and can bear a weight over the whole of the roof area of up to 24 t where the load is evenly spaced.

Customers throughout Europe have different requirements regarding the meat hanging equipment in their refrigerated trailers. We will fit your trailer with the correct system solution for your needs: For instance, the proven Euro meat rack comprises five galvanised 60 mm tubular rails with a hook stop lock system and a parking rail for empty hooks.



Meat hanging systems with clockwise mounted hooks and storage to Euro standard...



... or as a bi-rail system for use in the Baltic economic area.



The extendible comfort stairs facilitate manual loading.



The drain in the floor pan simplifies cleaning.

\* Optional equipment

## Complete Coverage.

Investment Security Begins at the Rear.

A good investment is also a question of securing against a loss in value. The S.KO COOL is protected against the greatest risk as standard: Accident damage on the ramp. With TailGUARDlight™\* and Dynamic Ramp Protection (DRP)\* approaching it, even when under time pressure, is a sure thing.



The Dynamic Ramp Protection (DRP) system\* absorbs the impacting force on loading and unloading.



## Greater Safety when Docking.

Hard impacts against the ramp are common when pressed for time. The Dynamic Ramp Protection system (DRP) on the corners of the rear wall frame absorbs massive amounts of energy before your vehicle comes into contact with the loading dock. This solution prevents damage to your vehicle and the load and simplifies backing up to the ramp.



### TailGUARDlight™: the Electronic Ramp Approach Aid.

The ramp approach aid provides the driver with information about the remaining manoeuvring room behind the vehicle when reversing via visual and acoustic signals. The frequency of the signal increases as the distance to the ramp decreases.



Small and effective protecting power. The sensors for the electronic TailGUARDlight™ warning assistant monitor manoeuvring procedures at the rear.

\* Optional equipment  
TailGUARDlight™ is a trademark of WABCO Fahrzeugsysteme GmbH

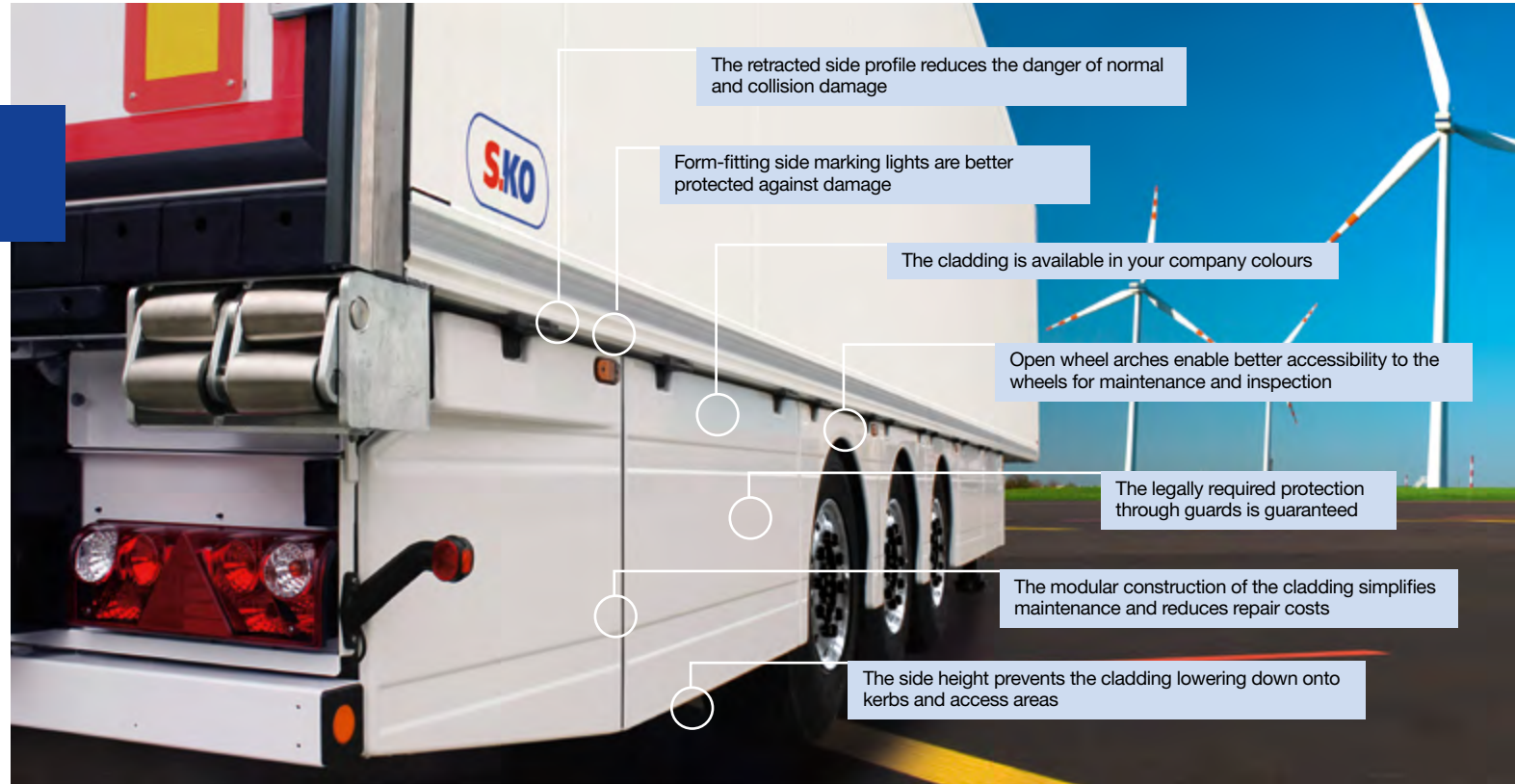


## Elegant Savings. The Aerodynamics Kit.

As a leading developer of trailers we have our ear directly to the road at Schmitz Cargobull. As a result we are always able to offer you new products so you can keep one step ahead of the tough competition. The full cladding does not simply make your S.KO look more elegant. You also save up to 4 % on fuel.



Maintenance and repairs are simple: The light modules can be individually fitted. Open wheel arches enable unimpeded access and prevent heat building up on the wheels and the brake discs. And we have even already taken later disposal into account. The dimensionally stable ABS plastic can be recycled to 99 %.



Cladding on the chassis reduces wind resistance, the wheel nuts and wheels remain directly accessible.



Pallet box for 36 pallets all flaps – even the wheel arches – can be individually lifted up and held in place.



Landing gear with ferry lashings and storage compartment for the securing wedge.

## Multi-Talent in Multi-Modal Transport.

### S.KO COOL – Strong Box Vehicles for Special Demands.

A multi-talent in multi-modal transport. The S.KO COOL is perfectly fitted out for quick, damage-free loading onto trains with its self-supporting body.

The S.KO COOL also shows its strength in short sea transport: It copes smoothly with hitching and unhitching with terminal tractors, low overhead heights, steep ramps and closely parked vehicles on board. The refrigeration unit with protective gratings is mounted lower, handles low headroom well and the landing gear with rolling feet enables manoeuvring in the smallest of spaces.



Thanks to robust gripping edges and reinforced stainless steel scuff plates loading onto trains is safe.



The folding underride guard adjusts to the shape of the hopper wagon when being loaded onto a train.



Optionally the S.KO is also available with ferry underride protection with a solid round bar and skids.



Ferry lashings on longitudinal beams and rear and the attachment block allow quick fixing on the ferry.

## Equipment for Every Requirement.

Specialist for Individual Transport Solutions.

With the S.KO you make a decision for customised loading and transport conditions. Clever loading concepts and equipment suited to your range of freight reduce your life cycle costs.

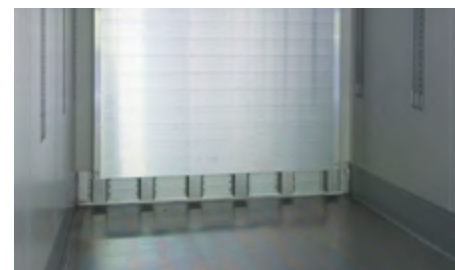
From running gear for poor road conditions with reinforced axles, running gear and larger air-pressure springs to vehicles in standard flower widths for the form-fitting transport of flower containers and wheeled trolleys and reinforced circulation walls for temperature-sensitive freight over short distances – a well-equipped S.KO can take on any practical transport task.

Thanks to our extensive, well thought-out detailed equipment you can save yourself costly retrofitting of your vehicles and reduce both wear and the amount of maintenance work.

However, above all, you can put your vehicles to efficient use with equipment for every requirement.



Short journeys with light cooling and without a refrigeration unit: however, the bulkhead is ready-prepared for retrofitting of refrigeration equipment.



Greater safety reserves when loading: six pallet stoppers optionally protect the circulation wall.



Enables interlocking loading with roller flower containers: adapted loading width.

## The Magnificent Seven. Complete Sets of Equipment in the Utility Packages.

The seven utility packages have been exclusively compiled to first-class standards to suit your S.KO COOL. The best equipment options have been compiled here in such a way that you can find an ideal solution for typical transport tasks. Some utility packages can be combined with one another. The advantages to you are the comfortable composition of your desired vehicle from within the extensive range of equipment and accessories and the avoidance of complex retrofitting as a result of missing options.

The compilation of the equipment is a direct reflection of the large range of practical experience possessed by Schmitz Cargobull. A separate brochure will give you detailed information on the content of the individual utility packages.



**Advantage PRO:** Top-quality appearance with stainless steel components and gleaming aluminium wheels.

### A Summary of The Seven Utility Packages

- Rough Road PRO** – greater performance reserves for poor road conditions.
- Load&Dock PRO** – robust resistance at the ramp.
- Eco Cool PRO** – optimised consumption in cooling and aerodynamics.
- Flower&Food PRO** – optimal for fresh goods transport.
- Passiv Thermo PRO** – saves costs for short distance use.
- Ferry PRO** – safe when using ferry services.
- Advantage PRO** – premium appearance for visible success.



**Rough Road PRO** maximises the preservation of the value of the trailer with its heavy duty running gear on poor roads and in extreme winter weather conditions.



**Passiv Thermo PRO** with certified consistency of temperature reduces the operating costs for higher payloads without a refrigeration unit.

# Always on the Road.

## ROTOS® DriveTechnology.

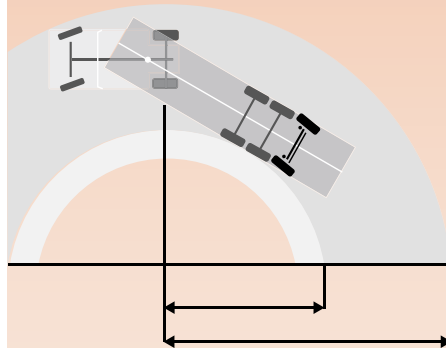
Smooth running, safety and guaranteed durability. Our ROTOS® axle units provide outstanding road handling combined with uncompromising availability.

All other running gear components are procured exclusively from renowned brand manufacturers. Large, maintenance-efficient disc brakes and maintenance-efficient hub units ensure that the intervals between maintenance work are long.



RSP (Roll Stability Program): Together with the standard-fitted EBS, individual wheels are braked in critical driving situations to increase the possibility of being able to retain control of the vehicle in such critical areas.

### ROTOS® Self steering axle



ROTOS® self-steering axle for reduced tyre wear and a smaller turning circle on narrow roads.



Our seal of quality: 1,000,000 km warranty on the low-maintenance running gear ROTOS® DriveTechnology.



Prevents fading and premature wear: Optimal air cooling of the 22.5" disc brakes.

\* excluding wearing parts

## Full Control for All Road Conditions. MRH Pneumatic Suspension.

Driving safety through branded quality: Our standard pneumatic suspension with Auto-Reset function automatically ensures an ideal driving height. At the same time it protects the air bellows.

Better informed: with our Trailer Informations System (TIS) you can constantly keep an eye on tyre pressure, the brake pad assistant and the immobiliser.



MRH pneumatic suspension raising/lowering valve: The auto-reset function prevents damage to the spring bellows caused by driving with the vehicle lowered.



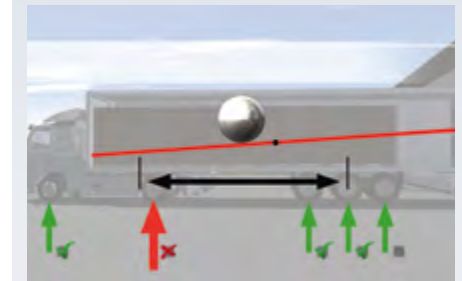
## Electronically Controlled Pneumatic Suspension ECAS II.

The loading height of your vehicle can be adjusted to the individual heights of ramps with the ECAS II electronic pneumatic suspension system. Saved ramp heights can be called up at the press of a button. During the loading process, the intelligent system automatically compensates for weight-related height fluctuations. And when it is time to leave, the auto-reset function restores the ride height in a matter of moments.



## LSP for correct loads

The centre of gravity changes for partial loads at the rear, it moves forward and increases the trailer load. The shifting of the centre of gravity can be balanced out to avoid an exceeding of the permissible load on the driven axle of the tractor unit: The rear axle of the trailer is relieved through LSP (Load Spread Program).



Lowering the pneumatic suspension pressure on the last axle shortens the effective wheelbase and restores the correct load distribution.

## Looking at the Bigger Picture. Equipment for Your S.KO.

An S.KO is not just an S.KO. Numerous equipment options give you the opportunity to adjust your vehicle exactly to suit your needs. Because an S.KO only becomes your S.KO when the functionality and safety aspects are matched to the tasks you carry out.



Retractable tail lift for comfortable and safe loading away from the ramp.



Always on hand in an emergency: Fire extinguisher in a plastic housing on the chassis.



Working spotlight for safe handling at the rear portal.



Aluminium wheels for low unladen weight and gleaming looks.

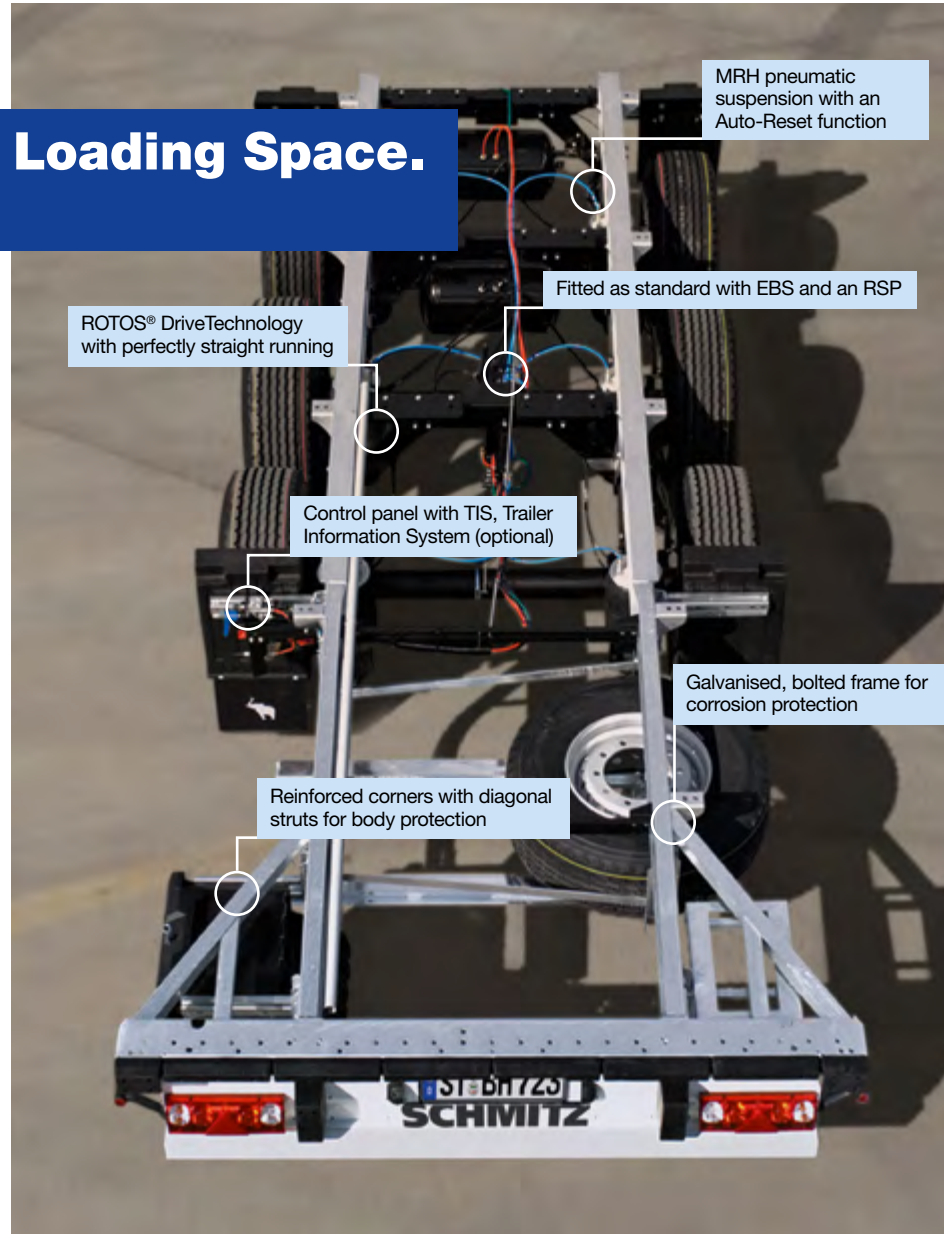
## Less Chassis, More Loading Space. S.KO Chassis.

Our robust box bodies offer you a number of advantages. Thanks to the self-supporting body the S.KO COOL can manage with a short chassis. The short frame allows a higher body height, as the box body sits directly onto the tractor unit. We are able to convert the greater body height for your benefit into better insulation with a maximum interior height.

In this way you gain the advantage of more loading space with perfect cooling conditions and improved air circulation.



Protection when docking: Diagonal corner reinforcements divert impact forces on the body into the chassis. This protects the body and avoids deformations at the rear.



## MODULOS®: Bolting Technology and Corrosion Protection

### Easy to repair:

The bolted, detachable connections enable the chassis components to be easily and inexpensively replaced. The corrosion protection remains intact due to galvanising. This simplifies maintenance and reduces repair costs.

### Long-term value retention:

Typical Schmitz Cargobull galvanising of the chassis components increases protection against road chippings, a 10-year guarantee against rust and protects the environment when it is recycled.



## Your Safe on Wheels. S.KO EXPRESS.

Valuable electrical appliances, tobacco or courier express parcel services – the S.KO EXPRESS is the perfect vehicle for goods needing secure transport.

The box body with a two-wing portal or a roller shutter protects your freight against unauthorised access, much more effectively than a tarpaulin. The side walls are made of weight-optimised FP 25 FERROPLAST® panels. And a continuous, galvanised, bolted steel chassis ensures stability.

In addition, the S.KO EXPRESS is, of course, in a prepared state for our security equipment. TrailerConnect® from Cargobull Telematics enables monitoring through the Bosch Monitoring Center. You can thus react quickly in any case of loss or misuse. “Geofencing” registers and reports any deviations from the planned route. And door contact sensors report any unlawful opening up of the vehicle.



With TrailerConnect® you can keep a constant eye on your trailer and can take steps in cases of danger or misuse.



The burglar-proof FERROPLAST® metal surface layers provide all-round protection for your freight.

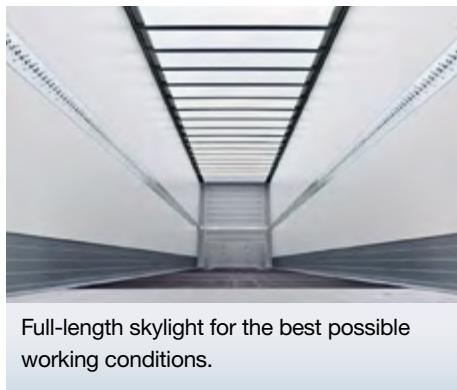


The space-saving alternative at the ramp to a two-wing rear portal: the metal roller shutter.

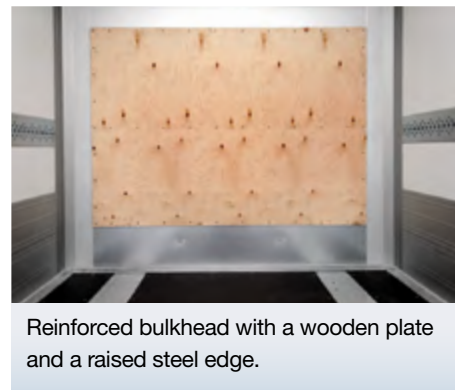
## Top-Quality Solutions for Top-Value Goods. Equipment for Your Dry Freight.

The S.KO EXPRESS is also perfectly prepared for your dry freight on the inside.

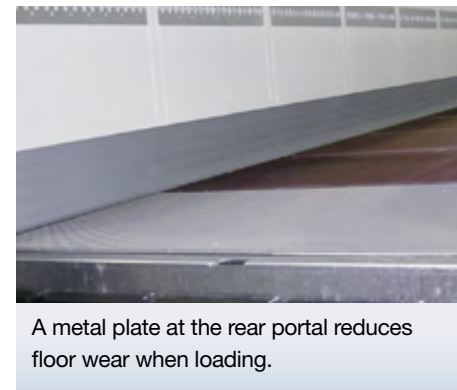
Our plywood floor is non-slip and thanks to its point load bearing capacity of up to 5.46 t (option 7.1 t) it can be driven upon by a fork-lift without hesitation. The metal plate at the rear portal minimises wear on loading. And the full-length skylight gives natural lighting and thus better working conditions, especially for courier express parcel services.



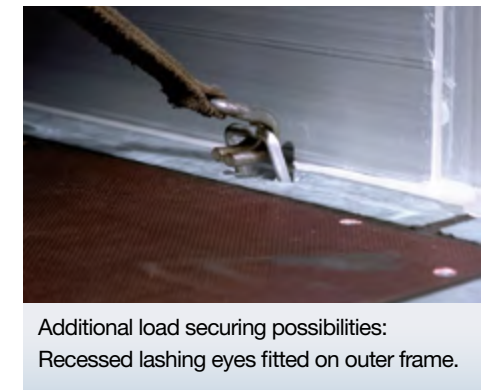
Full-length skylight for the best possible working conditions.



Reinforced bulkhead with a wooden plate and a raised steel edge.



A metal plate at the rear portal reduces floor wear when loading.



Additional load securing possibilities: Recessed lashing eyes fitted on outer frame.

## Versatile in Use and Flexible for Planning.

### S.KO FW EXPRESS with Folding Wall.

Safe transporting, quick loading and unloading – the S.KO FW EXPRESS combines the special protection you have from a box body with the simple handling of a curtainsider.

The goods remain protected against damage during manoeuvring or due to weather conditions when partially unloading. When it is completely opened, you have access on both sides to almost the whole of the loading width of your trailer.



Two-sided folding wall – enables flexible loading from three sides. Can also be combined with a refrigeration unit at the bulkhead as S.KO FW COOL.



Extractable ladder for easy stepping up.



Securing of the folded doors at the rear portal frame.

## The Safety of a Box Body, the Security of a Curtainsider.

### S.KO FW COOL with Folding Wall.

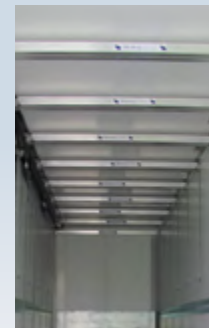
A flexible, insulating FERROPLAST® box body, efficient branded refrigeration equipment, a circulation wall for improved temperature control and also with a hygienic, aluminium barley grain structured floor and a number of diverse load securing options – the S.KO FW COOL is the folding wall trailer for refrigerated freight. This vehicle has also been in use for decades in Scandinavia as a long truck (M.KO with S.KO and dolly or with a long A.KO).



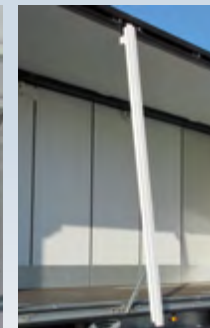
Embedded flush lashing eyes for flexible load securing.



Flexible load securing: continuous hooking edge for lashing straps and central attachments in the floor for square profiles.



Double decker system and load securing rails.



Folding stanchions for body stability.



Safe and effective: Refrigeration units from well-known manufacturers.

# We Look Forward to Being There for You.

## Services for Your Vehicle.

It is the right service that ensures that a good product becomes a perfect investment over several years. That is why working with your service provider should be just as simple as working with your distribution vehicles.

Our one-stop service provides you with superior benefits. Your procurement process is much quicker if you have a one-stop-shop for tailor-made financing, an inexpensive Full Service contract and integrated fitting with trailer telematics. You only have one contact person who understands your needs, even in complex situations.

And who knows the product better than the manufacturer, who is in a position to offer better conditions for maintenance, repair and, ultimately, residual value than an outsider can?

There are many good reasons for taking advantage of the comprehensive services from Schmitz Cargobull.



**Cargobull Finance** offers you tailored financing from the industry experts. Attractive conditions for **hire-purchase and leasing** including **GAP-Cover** are a part of our range of services as is the **Schmitz Cargobull Protection packet**, which often provides coverage equivalent to fully comprehensive insurance cover.



**Cargobull Parts & Services** will deliver all available original replacement parts within 24 hours **throughout Europe** for most trailers. With a **Full Service contract** including **break-down cover** you can insure yourself against the risk of costs for repairs and maintenance with an inexpensive single sum.



**Cargobull Telematics** with **TrailerConnect®** meets the increasing demands of a modern **trailer telematics system**. With the **Position** service you can simplify dispatch management, with **Technology** you enter the demand-oriented trailer maintenance system. In addition, up-to-date summaries provide you with the basis for more efficient **fleet management**.



To ensure that you are always quickly back on the road we have the **Cargobull Euroservice** 24 hours a day, 365 days a year in 40 European countries. With over **1,200 audited service partners** a comprehensive European network ensures that you always receive professional help for your Schmitz Cargobull trailer.

## Just more. Again and Again.

We owe our success to our customers. To you. We know that we must consistently earn your trust every day. With good ideas, hard work and with box body vehicles which support your success in the transport business on a daily basis. That is what we strive for. Every day anew. Because we want to utilise our trailer know-how to provide you with the best solutions.

We have additional information about S.KO COOL and EXPRESS for you on the Internet at [www.cargobull.com](http://www.cargobull.com). Or simply call us and talk directly with our experts.

**We are there for you!**

Find out more at:  
[www.cargobull.com](http://www.cargobull.com)



### Schmitz Cargobull Sales Germany

#### Cargobull Trailer Center Hamburg

Liebigstraße 103  
D-22113 Hamburg  
Tel.: +49 40 529872-0  
Fax: +49 40 529872-19  
E-mail: [ctc.nord@cargobull.com](mailto:ctc.nord@cargobull.com)

#### Cargobull Trailer Center Berlin

Robert-Guthmann-Str. 9  
D-15713 Königs Wusterhausen  
Tel.: +49 3375 5257979  
Fax: +49 3375 5257980  
E-mail: [ctc.ost@cargobull.com](mailto:ctc.ost@cargobull.com)

#### Cargobull Trailer Center Neuss

Welser Str. 8  
D-41468 Neuss-Uedesheim  
Tel.: +49 2131 12559-00  
Fax: +49 2131 12559-10  
E-mail: [ctc.west@cargobull.com](mailto:ctc.west@cargobull.com)

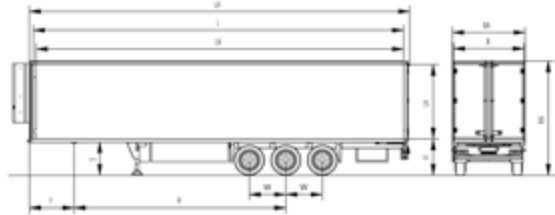
#### Cargobull Trailer Center Augsburg

Winterbrückenweg 27  
D-86316 Friedberg-Derching  
Tel.: +49 821 3434555  
Fax: +49 821 3434550  
E-mail: [ctc.sued@cargobull.com](mailto:ctc.sued@cargobull.com)



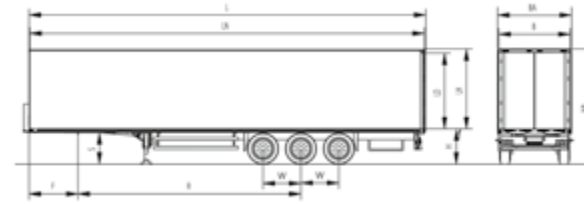
## Facts.

Dimensions & Data.



### S.KO COOL S.KO 24/L-13.4 FP 60 COOL

Overall length (LA)	approx. 13,600 mm
Interior body length (L)	approx. 13,410 mm
Internal body width (B)	approx. 2,460 mm
Internal body height (LH)	approx. 2,650 mm
Usable body length (LN)	approx. 13,315 mm
Usable body height	approx. 2,650 mm
Full height, unloaded (HA)	approx. 4,008 mm
Full height front, unloaded	approx. 4,009 mm
Full height rear, unloaded	approx. 4,008 mm
Rear loading height, unloaded (H)	approx. 1,273 mm
Tyres 4 x	385/65 R 22.5"
Total permissible weight	39,000 kg
Permissible payload	31,040 kg
Permissible axle load	27,000 kg
Permissible semitrailer load	15,000 kg
Empty weight, complete	+/- 3 % 7,960 kg
Trailer coupling height, unloaded (S)	approx. 1,140 mm
Trailer coupling height, loaded (S)	approx. 1,115 mm
External overall length	approx. 13,550 mm
Ride height	410 mm
Body width (BA)	approx. 2,600 mm
Wheelbase (R)	7,600 mm
Interior rear door height	approx. 2,640 mm
Rear door width - internal	approx. 2,460 mm
Axle distance (W)	1,310 mm
Front overhang (F)	1,600 mm



### S.KO EXPRESS S.KO 24/L-13.62 FP 25 EXPRESS-2

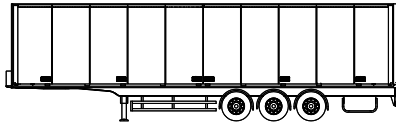
Interior body length (L)	approx. 13,685 mm
Internal body width (B)	approx. 2,480 mm
Internal body height (LH)	approx. 2,700 mm
Usable body length (LN)	approx. 13,625 mm
Usable body height	approx. 2,700 mm
Full height, unloaded (HA)	approx. 3,993 mm
Full height front, unloaded	approx. 3,993 mm
Full height rear, unloaded	approx. 3,993 mm
Rear loading height, unloaded (H)	approx. 1,263 mm
Tyres 4 x	385/65 R 22.5"
Total permissible weight	39,000 kg
Permissible payload	32,018 kg
Permissible axle load	27,000 kg
Permissible semitrailer load	15,000 kg
Empty weight, complete	+/- 3 % 6,982 kg
Trailer coupling height, unloaded (S)	approx. 1,141 mm
Trailer coupling height, loaded (S)	approx. 1,116 mm
External overall length	approx. 13,685 mm
Ride height	370 mm
Body width (BA)	approx. 2,550 mm
Wheelbase (R)	7,700 mm
Interior rear door height	approx. 2,640 mm
Rear door width - internal	approx. 2,448 mm
Axle distance (W)	1,310 mm
Front overhang (F)	1,685 mm

\* Unladen weight (+/- 3 %) without spare wheel and additional fittings.

\*\* Other body heights are possible at different fifth wheel heights.

## Facts.

### Dimensions & Data.



**S.KO EXPRESS with Folding Wall**  
**S.KO 24/L – 13.5 FP 25 FW**

Axles	3 x 9,000 kg		
Track / spring centre	2,040 mm	1,300 mm	1,300 mm
Disc brake	Ø 430 mm		
Premium single wheel	385/65 R 22.5"		
Total weight	up to 39,000 kg		
Unladen weight*	8,500 kg		
Overall length without refrigeration unit	13,685 mm		
Overall width	2,550 mm		
Interior body length	13,450 mm		
Usable length with roller shutter	13,450 mm		
Interior body width	2,468 mm		
Interior body height	2,600 mm		
Interior side door width	3,314 mm		
Interior side door height	2,497 mm		
Trailer coupling height, unladen** (horizontal position)	1,140 mm		
Trailer coupling height, rear, unladen (horizontal position)	1,294 mm		
Full height, unladen:	approx. 4,000 mm		

\* Unladen weight (+/- 3 %) without spare wheel and additional fittings.

\*\* Other body heights are possible at different fifth wheel heights.

This publication is an international publication and may contain services that are not offered in certain countries. All dimensions and weights are approximate. The data relates to a vehicle with base fittings without taking into consideration possible additional fittings. We reserve the right to make technical changes. Some illustrations show vehicles with special fittings. The statements are only valid for the Federal Republic of Germany at the time of printing. Contact your Schmitz Cargobull contact partner and ask about the offers and services that are valid in your own country. Version August 2012.





The Trailer Company.



just more.

Schmitz Cargobull AG · Bahnhofstr. 22 · D-48612 Horstmar, Germany  
Telephone +49 2558 81-0 · Telefax +49 2558 81-500 · [www.cargobull.com](http://www.cargobull.com)