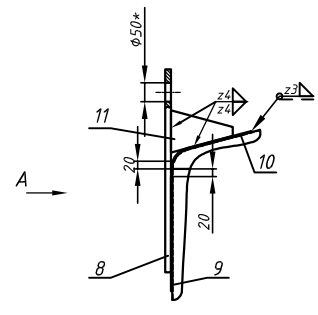
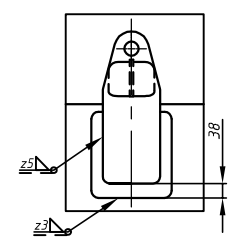


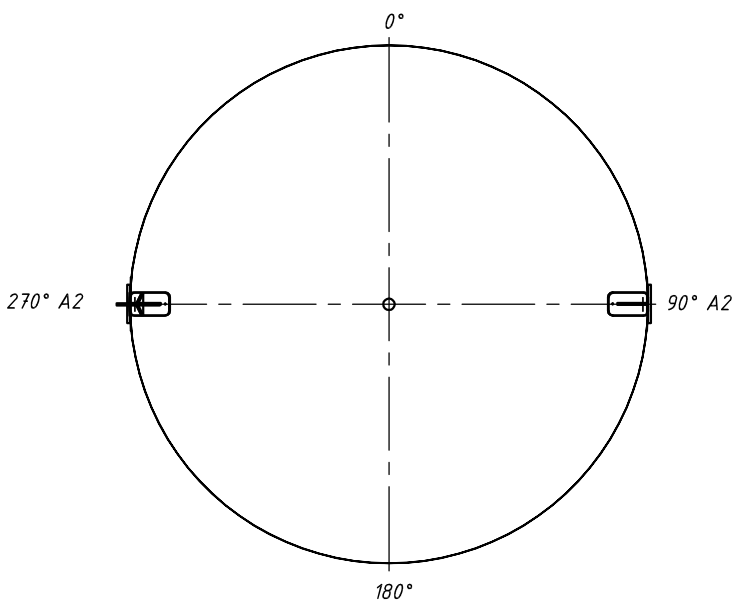
II (1:10)



A (1:10)



- 1.*For information only.
- 2. Non mentioned tolerances - holes H16, shafts h16, other ±IT16/2.
- 3. Not mentioned surface roughness Ra 12,5 µm.
- 4. Mark (punched in) tanks serial numbers (acc. to customer) acc. the vessel's dokumentation



Welds		Nondestructive examination				Remarks		
Longitudinal welds	0,7	VT 100%						
Circumferential welds	0,7							
Other welds	0,7							
Quality level for vessel weldings seams defects - C acc. LST EN ISO 5817 : 2014 requirements								
Nr. / No	Description	Q-ty	Positioning	Flange SMS/DN	PN	Type ASME / DIN	Facing	Remarks
A2	Lifting lugs	4	90°;270°	—	—	—	—	—
M1	Manhole	1	0°	—	—	—	—	—
Description		Tank						
Shell and top head		1.4301 EN 10088-2						
Bottom head and outer room supports		1.4301 EN 10088-2						
Nozzle pipes		1.4301 EN 10217-7						
Nozzles		—						
Seals		—						
External bolts & nuts		—						
Internals		—						
Reinforcement plates		—						
VTM-35.4.00.000SB								
Vertical tank								1:20
Rev.0								
20.06.26								acmm.dk