



Shape Metal, Shape Trust

As a global enterprise, HSG sticks to providing professional and convenient service support to customers at home and board

- Professional Training**  
Multiple technical training service and free operation training for customers and dealers in time
- Efficient Support**  
Humanistic service model, online services and 7\*24 hotline to offer solutions and assistance
- Optimized Transport**  
Multi-channel transport solutions and professional transport solution team will provide various transport cases for to satisfy the demand of customers and save transports fees
- Sufficient Accessories**  
Highly efficient accessories delivery service, multiple network inventory jointly responds to accessories demand to shorten customer's waiting times and accelerate production
- Careful Services**  
Domestic door-to-door service and free proofing, global 100+dealers provide efficient and convenient services

**HSG**  
Shape Metal, Shape Trust



Website



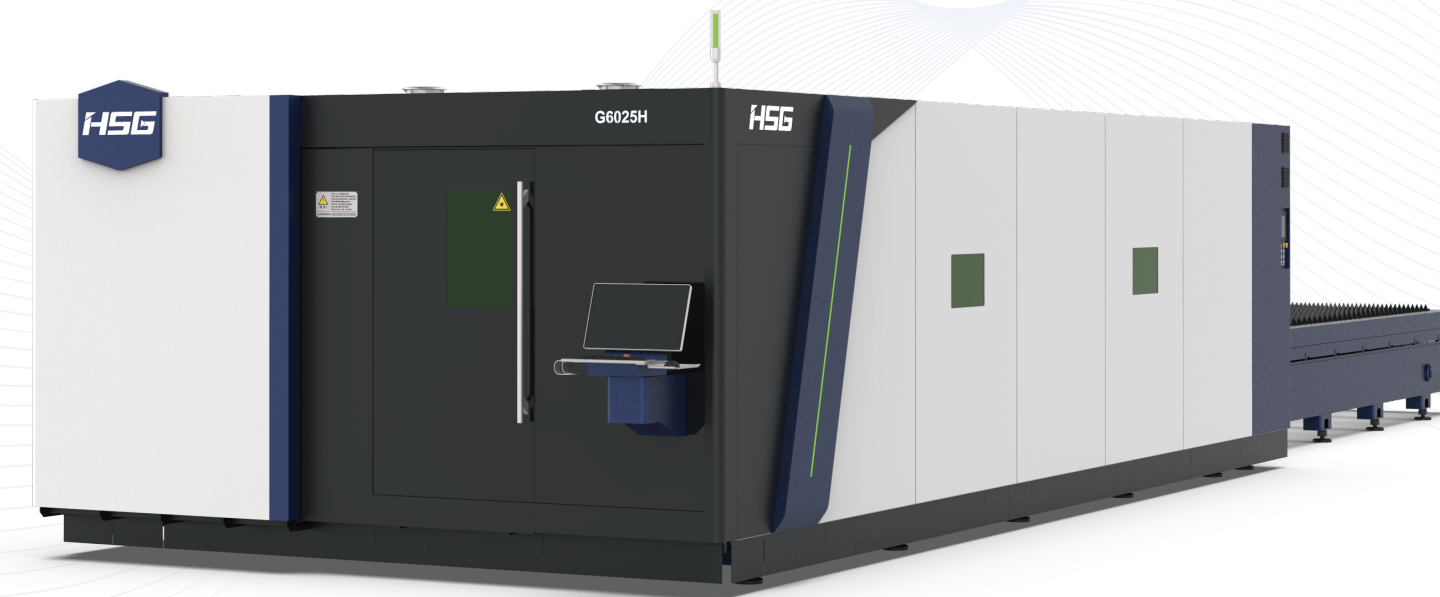
Facebook



Youtube

Headquarters Add.: No. 4, Anye Road, Shunde District, Foshan, Guangdong, China  
Website: www.hsglaser.com  
Email: info@hsglaser.com  
Tel:+86 757-66833906

**HSG**



**GH**

High-performance Laser Cutting Machine

www.hsglaser.com

### Company Culture

- SLOGAN**  
Shape Metal, Shape Trust
- MISSION**  
To support the high-speed growth of our customers
- VISION**  
To be a world-leading provider of metal shaping equipments & comprehensive solutions

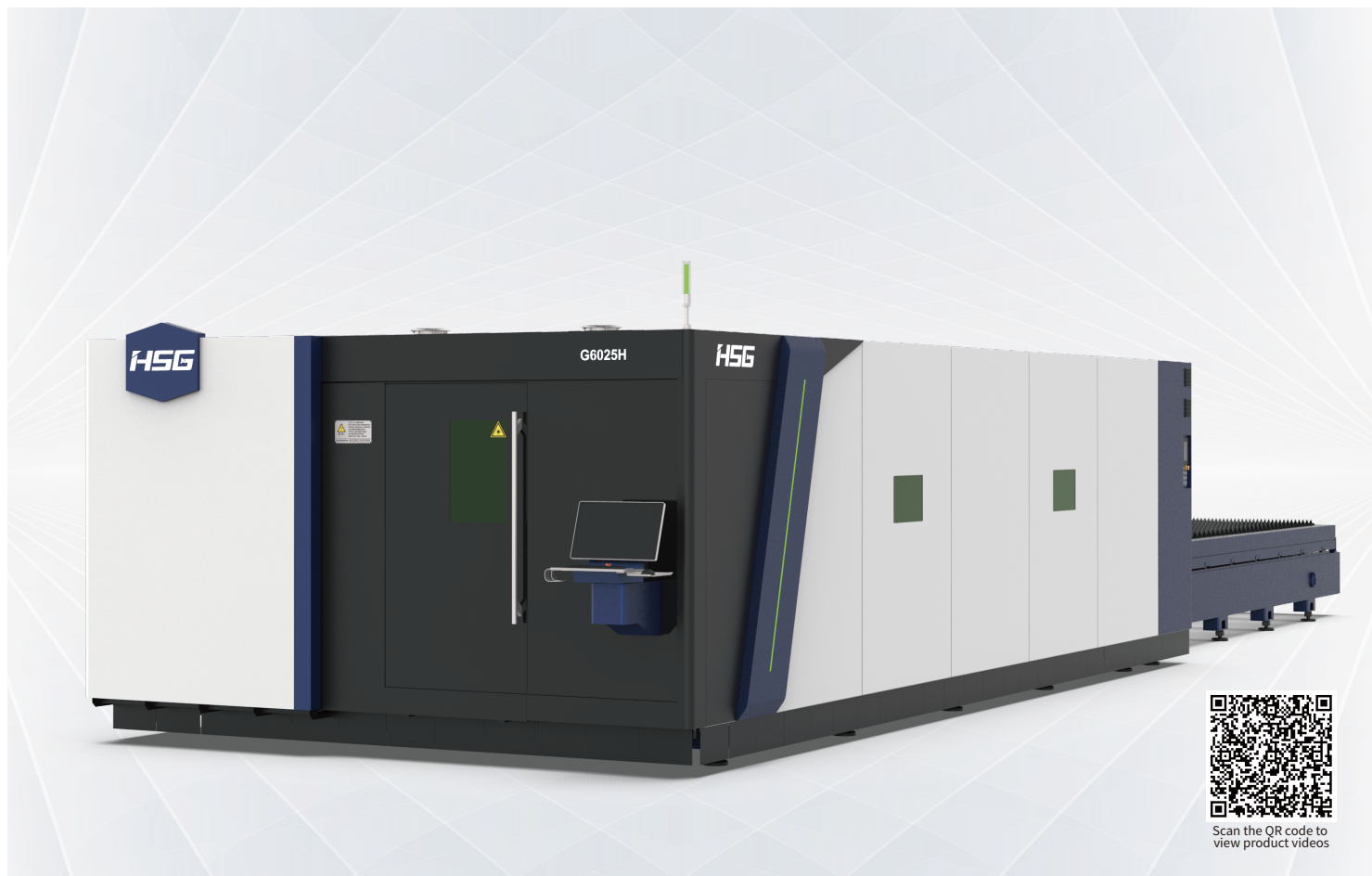
### Company Profile

- 19** Global Branches
- 100+** Countries Covered
- 5** Manufacturing Bases
- 30+** Global Service Centers
- 8,000+** Annual Capability
- 135,000m<sup>2</sup>** Occupied Area



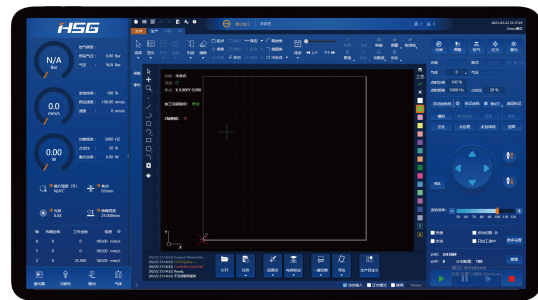
# GH 3000-30000W

## High-performance Laser Cutting Machine



### Bus Control System

- Upgraded version of bus control system has strong and diverse functions, which makes users enjoy green and intelligent control system through simple operations.
- Intelligent path optimization with brand-new algorithm.
- Smart vibration control.
- Torque protection of dual drives.
- DA correction of air pressure.



### Heat Protection Without Heat Damage Fear

- Material waste device is made of high-density burn prohibition plates for further improving heat protection of the machine bed.

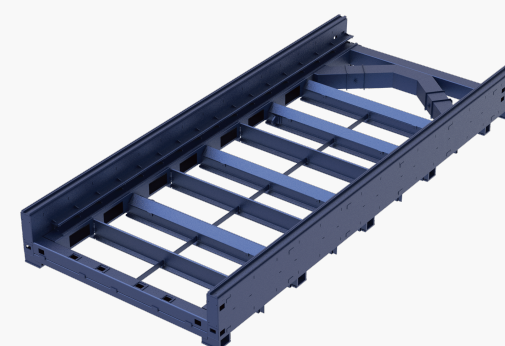


### Brand-new Aluminum Beam

- The new fifth-generation 6-series aluminum beam has 20% less weight and 15% more torsional resistance than the previous generation. Lightweight design beams play a high dynamic performance of the equipment to improve processing efficiency.

### High-precision Transmission System

- Selected professional speed reducers, high-precision racks, guide rails and other accessories construct entire high-accuracy transmission system to ensure stable operations in long time.

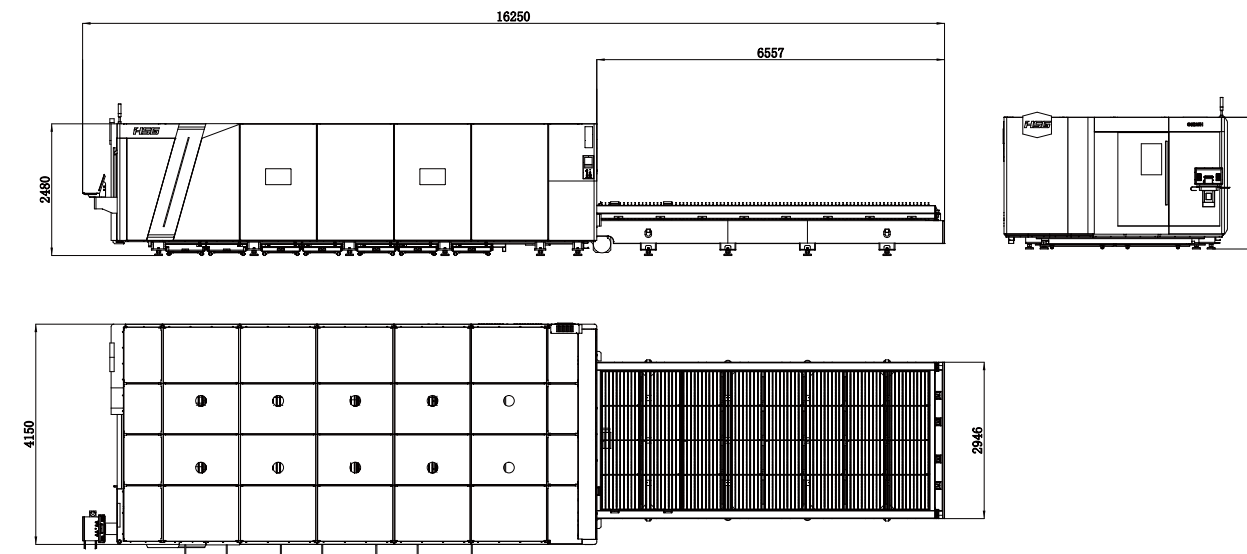


### Upgraded Matrix Machine Bed with Level-up Rigidity

- Brand-new matrix machine and welding design of the cross-section improve the rigidity of entire machine bed structure significantly and decrease the negative influence on machine bed.

### Machine Foundation

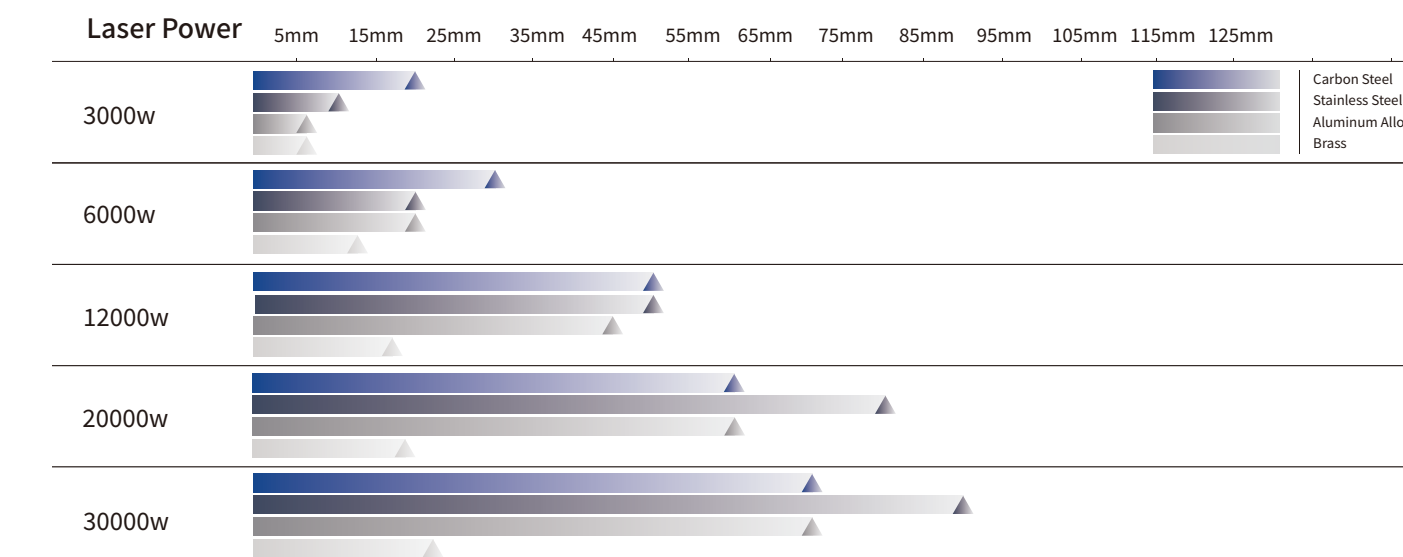
\*The marked size has about 10mm error  
\*Model: G6025H



### Cutting Samples



### Cutting Capacity



## Technical Parameters

Technical Parameters	G3015H	G4020H	G6025H	G8025H	G12025H
Power	3000W-30000W	3000W-30000W	6000W-30000W	12000W-30000W	12000W-30000W
Processing format (L*W)	3048mm*1524mm	4064mm*2032mm	6096mm*2540mm	8150mm*2540mm	12500mm*2540mm
X/Y-axis positioning accuracy	±0.03mm/m	±0.03mm/m	±0.03mm/m	±0.03mm/m	±0.03mm/m
X/Y-axis repositioning accuracy	±0.02mm	±0.03mm	±0.03mm	±0.03mm	±0.03mm
Max. Linkage Speed	200m/min	200m/min	200m/min	200m/min	200m/min
Max. Linkage Acceleration	4G	2.8G	2.8G	2.8G	2.8G

\* Machine appearance, technical parameters, function description, data comparison shown in this page are from HSG in-house laboratory. All testing results and experimental data shall be subject to real machine.

### Bus-based Laser Cutting Heads

- HSG developed and launched multiple high-power bus cutting heads ranging from 10kW to 60kW to achieve stable cutting of thick sheets.
- Optical filming to prevent lens pollution
- Real-time monitoring of laser focus
- Bus-based height adjusting system

