

Au2mate Manufacturing Management System —

DOCUMENT MODULE

DOCUMENTATION CONTROL MADE EASY

- Secured document database
- Easy accessibility by single scan
- S88 structured bundle storage
- User defined document structure
- QR equipment included
- Database & server included
- Installation and training

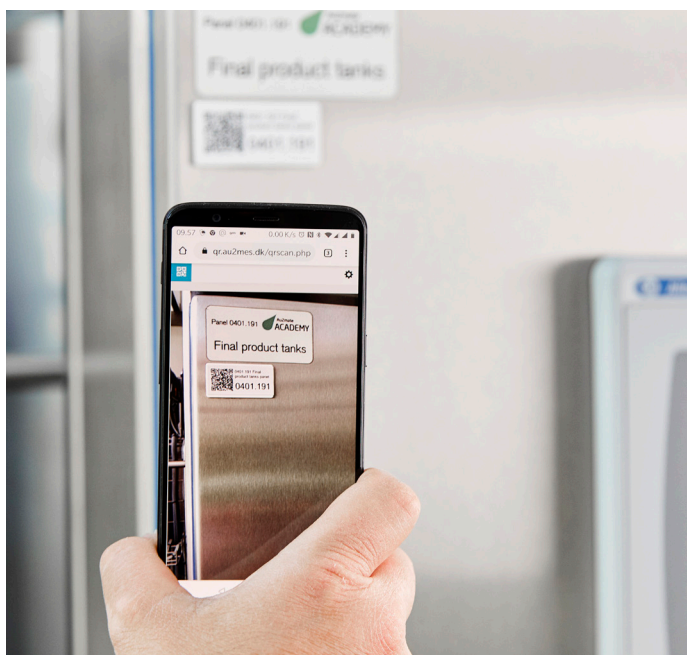
Au2mate document module is a “smart” documentation system, securing that all plant documentation is stored in a safe environment and at the same time providing users with easy and fast accessibility to the document database.

Via QR codes in the physical installation manuals, panel drawings, technical documents etc. can be retrieved by simply scanning the QR label with a tablet. The QR code is, via a database lookup, linking to a document or a structured group of documents covering the equipment (user defined).

Equipment to generate, print and scan the labels is included and will be delivered as well as assistance in getting started filing documentation on the doc server.

Key features include:

- Database and server software for hosting QR link /documents
- PC to host the document database
- QR label printer
- 1 Wi-Fi Access point to access the document server
- 1 tablet for scanning QR codes and retrieve documents
- Engineering hours for installation and training to get started with the system



Included in the package is a software insurance element securing automatic updates on new releases of included software packages.



SINGLE SCAN ACCESS TO DOCUMENT DATABASE

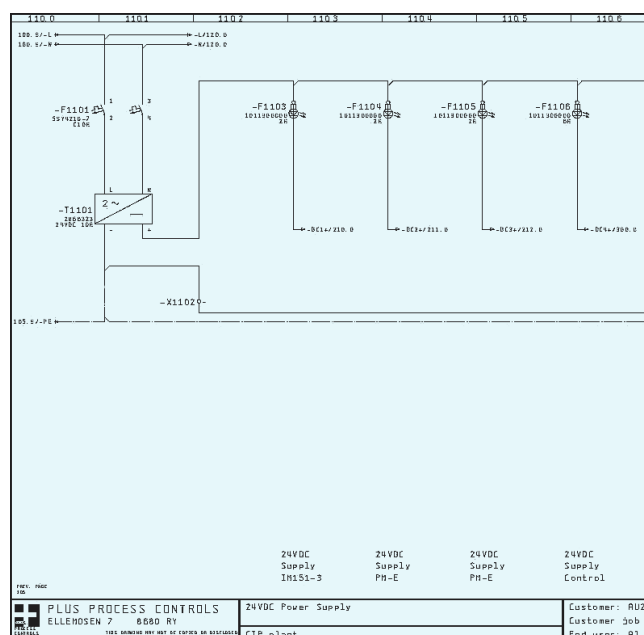
User defined structure on document server for:

- Operating manuals
- Function descriptions
- Panel drawings
- Data sheets
- Etc.

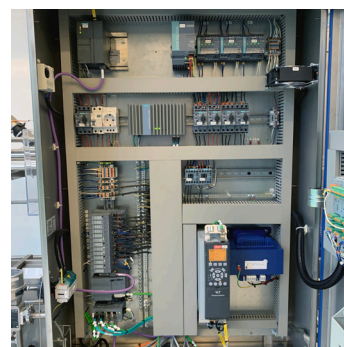
<https://qr.au2mes.dk>

User: AcademyGuest

Pass: Academy1234



0100.001 : Main panel



Documents



Main panel
Hardware
documentation