





# SHELF PRESENTATION SOLUTIONS

## SHELF-MANAGEMENT SOLUTIONS

- Shelf presentation system Optisell1 ..... 132
- Shelf presentation system Optisell2 .....133-134
- Accessories for shelf presentation system
- Optisell1+2 ..... 135
- Order entry profiles ..... 136
- Shelf edge profiles ..... 137

# SHELF PRESENTATION SOLUTIONS

METO shelf optimization systems offer you outstanding solutions for a wide range of shop shelf requirements. Within our range, we have manual and automatic product pushers, shelf dividers, retaining profiles, shelf edges, shelf stoppers and similar products.

Together with METO's wide range of store management solutions, these will turn shopping into experience for the shoppers. It is too a particularly effective way of achieving the aim of avoiding empty shelves and shorten the time customers have to spend searching for what they want.



OS1



OS2

As part of our strategic alliance with INSTORE MARKETING, we are offering “METO Powered by INSTORE” shelf optimization systems. INSTORE MARKETING, which is part of the ORNAMIN plastics group in Minden, is Germany's leading provider of merchandise arrangement and presentation systems for retailers.

**METO offer shelf presentation solutions ensuring that the buying decisions are made directly at the shelves.**



# SHELF OPTIMISATION SYSTEM OPTISELL1

**METO®**  
Powered by **INSTORE**



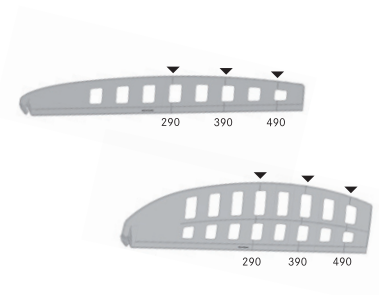
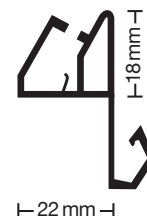
## OS1 rail, clip-in version

Application: Rail for attaching shelf dividers and pushers to Tego shelves.

Art. no.	Length
9426309	989 mm
9426310	1,239 mm

Colour: Light grey RAL 7035

**Unit quantity: 10**



## OS1 shelf divider

Application: For the tidy separation of goods on the shelf in order to make better use of the space available.

Art. no.	Size (H x L)	Pre-determined breakage point(s) at
9426280	65 x 540 mm	490 mm, 390 mm, 290 mm
9426266	120 x 540 mm	490 mm, 390 mm, 290 mm

Material: Polystyrene

Colour: Clear, transparent

(also available in frosted look and made of bioplastic)

**Unit quantity: 24**



## OS1 pusher

Application: The pusher ensures that the products on display are automatically pushed to the front of the shelf once an article has been removed. The pusher's case can simply be taken off, turned and placed back in order to change its position from straight to angular or vice versa.

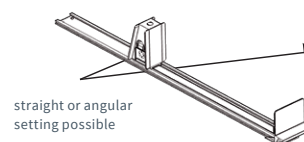
Art. no.	Newton force	Model front stop	Length guiding profile
9438884	14	60 x 60 mm, straight	465 mm

Material: Case: PS · Front stop: PC · Guiding profile: PVC

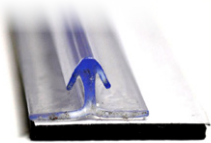
Colour: Pusher: Grey · Front stop: Transparent

Further pusher combinations available on request.

**Unit quantity: 10**



# SHELF OPTIMISATION SYSTEM OPTISELL2



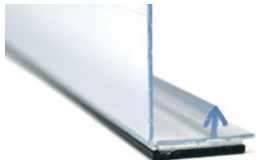
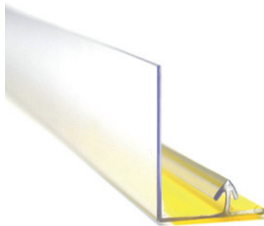
## OS2 profile

Application: Profile for attaching shelf dividers and pushers to shelves.  
Available with adhesive tape or magnetic strip.

Art. no.	Version	Length
9448686	with magnetic strip	1,247 mm

Colour: Transparent

Unit quantity: 1



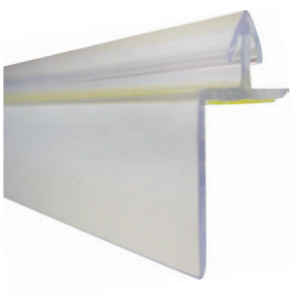
## OS2 L-shaped front profile

Application: Retaining profile for holding shelf dividers and pushers, with front panel, height 30 mm. Available with adhesive tape or magnetic strip.

Art. no.	Version	Length
9448337	with magnetic strip	1,247 mm

Colour: Transparent

Unit quantity: 1



## OS2 clamp profile

Application: Profile for shelf dividers and pushers for inserting in the U-profile of the shelf edge, for use in combination with a front sheet.

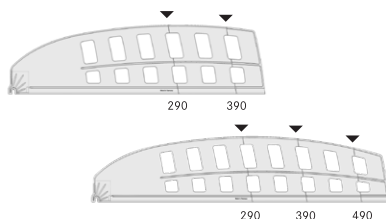
Art. no.	Length
9445755	1,235 mm

Colour: Transparent

Unit quantity: 1



# SHELF OPTIMISATION SYSTEM OPTISELL2

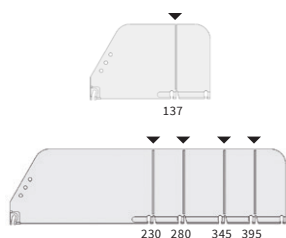


## OS2 shelf divider

Application: For the tidy separation of goods on the shelf in order to make better use of the space available.

Art. no.	Size (H x L)	Breaking point(s) at
9426254	120 x 440 mm	390 mm, 290 mm
9426255	120 x 540 mm	490 mm, 390 mm, 290 mm

Material: Polystyrene  
 Colour: Clear, transparent  
 (also available in frosted look and made of bioplastic)  
**Unit quantity: 24**

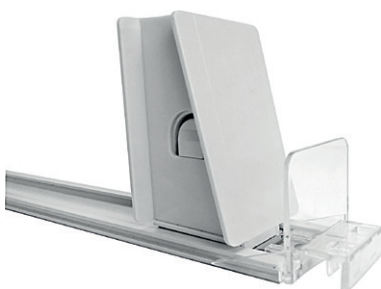


## OS2 shelf divider

Application: For the tidy separation of goods on the shelf in order to make better use of the space available.

Art. no.	Size (H x L)	Breaking point(s) at
9426256	120 x 192 mm	137 mm
9426230	120 x 448 mm	395 mm, 345 mm, 280 mm, 230 mm

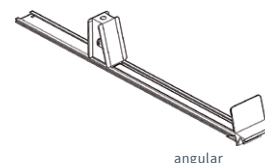
Material: Polystyrene  
 Colour: Clear, transparent  
 (also available in frosted look and made of bioplastic)  
**Unit quantity: 24**



## OS2 pusher

Application: The pusher ensures that the products on display are automatically pushed to the front of the shelf once an article has been removed. The pusher's case can simply be taken off, turned and placed back in order to change its position from straight to angular or vice versa.

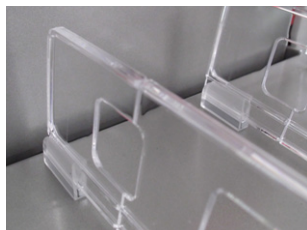
Art. no.	Newton force	Model front stop	Length guiding profile
9426262	10	60 x 60 mm, angular	415 mm



Material: Case: PS · Front stop: PC · Guiding profile: PVC  
 Colour: Pusher: Grey · Front stop: Transparent  
 Further pusher combinations available on request.  
**Unit quantity: 10**



## ACCESSORIES FOR OPTISELL 1+2

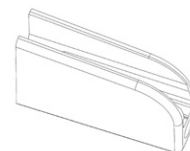


### Shelf divider clip with magnet, OS1 and OS2

Application: To fix shelf dividers to the back of the shelf, facilitates repositioning of the shelf dividers.

■ Art. no.: 9426225

Size: 6 x 16 x 17 mm  
Material: Polycarbonate  
Colour: Transparent  
**Unit quantity: 10**



### Extra-large back plate for pusher, OS1 and OS2

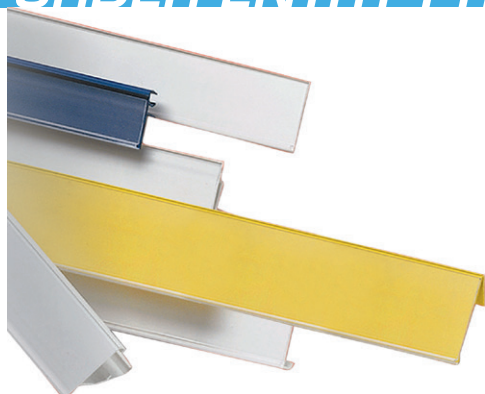
Application: For clipping to the pusher to enlarge the support area for displaying larger product packaging.

■ Art. no.: 9426224

Size: 70 x 130 mm  
Material: Polystyrene  
Colour: Grey  
**Unit quantity: 10**



# ORDER ENTRY PROFILES



## Order entry profiles

Application: Order entry profiles for sticking to all smooth, clean shelf edges. Co-extruded profiles for labels from 13 – 107 mm in height, with integrated guiding strip for barcode scanners.

The following adhesive profiles are available in various heights:

12A: Acrylic adhesive tape 12 mm, 12B: Foam adhesive tape 12 mm,  
24A: Acrylic adhesive tape 24 mm, 24B: Foam adhesive tape 24 mm

Front: Transparent  
Colour: Back panel white RAL 9010  
Further colours available on request.  
**Unit quantity: 50**

### Adhesive profile 985 mm in length

	13 mm	18 mm	20 mm	24 mm	26 mm	27 mm	28 mm	29 mm	30 mm	32 mm	Label height
12A	on request*	on request*	on request*	on request*	on request*	on request*	on request*	on request*	8352424	on request*	
12B	on request*	on request*	on request*	on request*	on request*	on request*	on request*	on request*	8352426*	on request*	
24A	on request*	on request*	on request*	on request*	on request*	on request*	on request*	on request*	8352425*	on request*	
24B	on request*	on request*	on request*	on request*	on request*	on request*	on request*	on request*	8352427*	on request*	

	33 mm	35 mm	39 mm	40 mm	50 mm	52 mm	53 mm	55 mm	58 mm	60 mm	Label height
12A	on request*	on request*	on request*	8352428	on request*	on request*	on request*	on request*	on request*	on request*	
12B	on request*	on request*	on request*	8352430	on request*	on request*	on request*	on request*	on request*	on request*	
24A	on request*	on request*	on request*	8352429*	on request*	on request*	on request*	on request*	on request*	on request*	
24B	on request*	on request*	on request*	8352431*	on request*	on request*	on request*	on request*	on request*	on request*	

	62 mm	64 mm	73 mm	80 mm	107 mm						Label height
12A	on request*	on request*	on request*	on request*	on request*						
12B	on request*	on request*	on request*	on request*	on request*						
24A	on request*	on request*	on request*	on request*	on request*						
24B	on request*	on request*	on request*	on request*	on request*						

### Adhesive profile 1,235 mm in length

	13 mm	18 mm	20 mm	24 mm	26 mm	27 mm	28 mm	29 mm	30 mm	32 mm	Label height
12A	on request*	on request*	on request*	on request*	on request*	on request*	on request*	on request*	8352452	on request*	
12B	on request*	on request*	on request*	on request*	on request*	on request*	on request*	on request*	8352454*	on request*	
24A	on request*	on request*	on request*	on request*	on request*	on request*	on request*	on request*	8352453*	on request*	
24B	on request*	on request*	on request*	on request*	on request*	on request*	on request*	on request*	8352455*	on request*	

	33 mm	35 mm	39 mm	40 mm	50 mm	52 mm	53 mm	55 mm	58 mm	60 mm	Label height
12A	on request*	on request*	on request*	8352456	on request*	on request*	on request*	on request*	on request*	on request*	
12B	on request*	on request*	on request*	8352458	on request*	on request*	on request*	on request*	on request*	on request*	
24A	on request*	on request*	on request*	8352457*	on request*	8352461*	on request*	on request*	on request*	on request*	
24B	on request*	on request*	on request*	8352459*	on request*	8352463*	on request*	on request*	on request*	on request*	

	62 mm	64 mm	73 mm	80 mm	107 mm						Label height
12A	on request*	on request*	on request*	on request*	on request*						
12B	on request*	on request*	on request*	on request*	on request*						
24A	on request*	on request*	on request*	on request*	on request*						
24B	on request*	on request*	on request*	on request*	on request*						





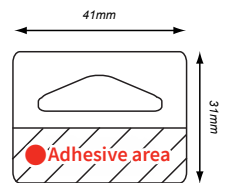
## Hang tabs, self-adhesive

Application: Self-adhesive PVC eyelets with delta holes for peg hooks, for retrofitting or as a replacement for torn peg hook holes. For products up to 200 g.

■ Art. no.: 9406120\*

\* Product on request, minimum order quantity 200 units

Format: 41 x 31 mm  
Material: PVC  
Colour: Transparent  
Unit quantity: 50 (5 x 10)  
Unit quantity: 50



## Shelf stopper clip

Application: Plastic clip for attaching special offer signs directly to the shelf, to the product against the direction of customer flow. For attaching signs with standard perforation. Customised shelf-stoppers available on request.

■ Art. no.	Size	Profile height
9217919	40.5 x 30 x 26 mm	40 mm

Material: Polycarbonate  
Colour: Transparent  
Unit quantity: 100

