

Workshop Equipment



MAHA Product References

for Workshops of the VOLKSWAGEN AG

Audi, Bentley, Bugatti, Ducati, Lamborghini, MAN, Porsche, Scania, Seat, Škoda, Volkswagen and Volkswagen Commercial Vehicles.





Contents

		Page
Dialog / Direct Reception	VAS 5000	3
Roller Brake Tester	V.A.G 1850 A	4
	VAS 6497	5
	VAS 6763	6
Shock Tester	VAS 6636	7
Headlight Tester	VAS 621 005	8
	VAS 621 001	9
Dynamometer	V.A.G 1851	10
Scissors Lifts	VAS 6804	11
	VAS 6831	12
	VAS 791 011A	13
	VAS 791 013A	14
Twin Scissors Lifts	VAS 6802	15
Two Post Lifts	VAS 771 003A	16
	VAS 771 035	17
	VAS 771 025A	18
	VAS 771 013	19
Four Post Lift	VAS 6140	20
	VAS 772 003	21
Two Post In-Ground Lift	VAS 6259	22
	VAS 6646	23
	VAS 782 047	24
	VAS 782 033A	25
Four Post In-Ground Lift	VAS 783 015	26
	VAS 783 013A	27

Dialog/Direct Reception

VAS 5000



The dialog reception is a contemporary, customer-friendly version of the vehicle reception in the customer's presence.

Joint vehicle inspection may also, of course, be carried out during a final inspection.

The dialog reception is a showcase for exemplary customer service.

The service advisor at this work station should convey a high level of expertise with their outstanding technical knowledge.

The design and fittings of the dialog reception focus on the spatial conditions and on the vehicle throughput.

Dialog Reception for Cars and Vans

The upgradeable system consisting of vehicle lift (e.g.: VAS 6259) and roller brake tester (e.g.: V.A.G 1850A or VAS 6763) as base modules can have further testing equipment integrated into it, such as a shock absorber tester (VAS 6636) and a headlight tester (VAS 621 001).

Retrofits may be carried out later. It is also possible to expand to a system with a computer-guided data connection of administration and test equipment and to integrate it into a digital car dealer.

Using the clearly arranged screen view, all sections of the vehicle inspection can be easily understood and then quickly documented using a detailed protocol printout.

In only a short space of time, specialists are in a position to inform themselves and their customers of the technical condition of a motor vehicle and to make a diagnosis. This is a pressure-free way of involving the customer in the decision-making process for the work that needs to be performed.

Standard Delivery:

The scope of delivery and price depends on the design of the dialog reception and is determined by intended use (e.g.: final inspection, testing organisations in the dealership, etc.) and the throughfare number of the customer vehicles. In any case, we recommend comprehensive advice from the responsible service region and the MAHA partner.



Roller Brake Tester

V.A.G 1850 A

in Modular Design

Technical data

Permissible axle load	3.5 t
Track width min. / max.	780 mm / 2200 mm
Drive power	2 x 3 kW
Test speed	5 km/h
Measured value display	0–8 kN
Roller diameter	202 mm
Roller axle distance	400 mm
Power supply	3/N/PE 400 V 50 Hz
gG fuse	25 A
Dimensions of display (H x W x D)	630 x 870 x 240 mm
Dimensions of roller set (L x W x H)	2320 x 680 x 280 mm
Analogue display diameter	2 x 350 mm



VP 210073 Roller Brake Tester
for cars and vans up to 3.5 t axle load
MODEL: MBT 2200 LON

Standard Delivery:

- Analog display with two pointer indicators and integrated control cabinet
- Roller set MBT 2000 RS 2

alternatively available:

VP 210105 Roller Brake Tester
for cars and vans up to 3.5 t axle load
MODEL: MBT 2250 EUROSYSTEM

Standard Delivery:

- Communication desk MCD 2000 with integrated control cabinet
- Roller set MBT 2000 RS 2
- PC/Hardware optional available

Recommended accessories:

- 4WD test mode
- V.A.G. 1850 A/1 Add-on Kit Brake Tester Directive 2011

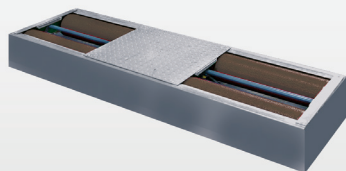
Expansion with Shock Tester is possible: See VAS 6636

Roller Brake Tester

VAS 6497

“Stand Alone“

Technical data



Permissible axle load	4.0 t
Track width min. / max.	780 / 2200 mm
Drive power	2 x 3.0 kW
Test speed	5 km/h
Measured value display	0–6 kN
Roller diameter	202 mm
Roller axle distance	400 mm
Power supply	3/N/PE 400 V 50 Hz
gG fuse	25 A
Dimensions of display (H x W x D)	470 x 840 x 100 mm
Dimensions of roller set (L x W x H)	2320 x 680 x 280 mm
Analogue display diameter	2 x 350 mm

VP 210088 Roller Brake Tester for cars and vans up to 4.0 t axle load MODEL: MBT 2100

Standard Delivery:

- Analog display with two pointer indicators
 - Difference indication by LED display
 - Self-supporting, enclosed roller set
 - Reinforced roller set RS2 for Axle load 4 t, Test speed 5 km/h
- Model: MBT 2000 RS 2

Recommended accessories:

- 4WD test mode
- V.A.G. 1850 A/1 Add-on Kit Brake Tester Directive 2011



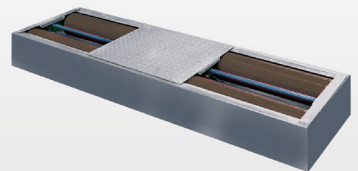
Roller Brake Tester

VAS 6763

“Stand Alone“

Technical data

Permissible axle load	8.0 t
Track width min. / max.	870 / 2800 mm
Drive power	2 x 5.5 kW
Test speed	5 km/h
Measured value	10 kN
Roller diameter	202 mm
Roller axle distance	400 mm
Power supply	3/N/PE 400 V 50 Hz
gG fuse	35 A
Dimensions of display (H x W x D)	910 x 870 x 300 mm
Dimensions of roller set (L x W x H)	2925 x 680 x 280 mm
Analogue display diameter	2 x 350 mm



VP 410163 Roller Brake Tester
for cars and vans up to 8.0 t axle load
MODEL: MBT 3200 LON

Standard Delivery:

- Analog display with two pointer indicators and integrated switching and electro-cabinet
- Roller set MBT 3200

Recommended accessories:

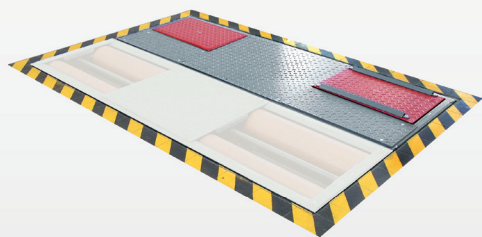
- 4WD test mode
- V.A.G. 1850 A/1 Add-on Kit Brake Tester Directive 2011

Shock Absorber Tester

VAS 6636

Combinable with V.A.G 1850 A

Technical data



Axle load (test capacity)	2.2 t
Axle load (support capacity)	2.5 t
Track width min. / max.	880 / 2200 mm
Drive power	2 x 1.1 kW
Vibration amplitude	6.5 mm
Vibration frequency (controlled)	2–10 Hz
Maximum plate stroke	70 mm
Test range of damping rate "D"	0.02–0.3
Power supply	1/N/PE 230 V 50/60 Hz
gG fuse	16 A
Floor assy. dimensions (H x W x L)	280 x 800 x 2320 mm

VP 215041 Shock Absorber Tester
for cars and vans up to 2.5 t axle load
MODEL: MSD 3000 EURO

Recommended accessories:
 - Noise detection module



Headlight Tester

VAS 621 005

Technical data

Dimensions (W x H x D)	655 x 1770 x 720 mm
Measuring range:	
- underneath	0–600 mm / 10 m (0–6 %)
- left + right	0–1000 mm / 10 m (0–10 %)
Light intensity	40 000 cd
Illuminance	64 lx
Measurement distance	100–500 mm
Adjustment track lens centre over floor	240–1500 mm
Relative humidity	20–80 %
Temperature range	5–40 °C



VP 185073 Headlight Tester MODEL: MLT 1000

Recommended accessories:

- VAS 621 001/1 (ASE 621001 80 A00)
2 Slide track 1.75 m of sliding displacement mounted on floor (3.50 m total sliding displacement)
- VAS 621 001/2 (ASE 621001 80 B00)
2 Slide track 1.75 m of sliding displacement below floor (3.50 m total sliding displacement)
Please see separate installation plan!
- Laser Aligner for Headlight Tester

Headlight Tester

VAS 621 001

Electronic, with Camera System

Technical data



Dimensions (W x H x D)	655 x 1770 x 720 mm
Measuring range:	
- above hotspot	0–800 mm / 10 m (0–8 %)
- above pitch angle	0–300 mm / 10 m (0–3 %)
- underneath	0–700 mm / 10 m (0–7 %)
- left + right	0–1000 mm / 10 m (0–10 %)
Light intensity	125 000 cd
Illuminance	200 lx
Measurement distance	100–500 mm
Adjustm. range of lens centre over floor	240–1500 mm
Deviation of intensity	+/- 5 %
Deviation from an axle	+/- 5 °
Relative humidity	20–80 %
Temperature range	5–40 °C

VP 185062 Headlight Tester Electronic, with Camera System MODEL: MLT 3000

Standard Delivery:

- Laser Aligner for Headlight Tester
- PC Bluetooth Module MLT 3000 for Test Lane
- Optical Adjustment Aid
- Display via Colour LED on the Front Panel
- VW Software for Dynamic Light Assist

Recommended accessories:

- VAS 621 001/1 (ASE 621001 80 A00)
2 Slide tracks per 1.75 m displacement, above floor (3.50 m total displacement)
 - VAS 621 001/2 (ASE 621001 80 B00)
2 Slide tracks per 1.75 m displacement, below floor (3.50 m total displacement)
- Please see separate installation plan!



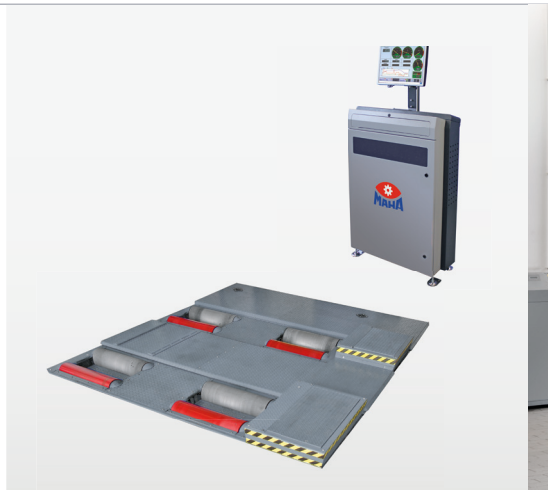
Dynamometer

V.A.G 1851

for Vehicles with Four-Wheel Drive

Technical data

Color Screen	19 inches
PC desk dimensions (H x W x D)	1560 x 860 x 420 mm
RPM	0–10000 U/min.
Measuring accuracy	+/- 2% of meas. value
Power supply	3/N/PE 230 V 50 Hz
gG fuse	16 A
Wheel power (static) max.	260 kW
Test speed max.	260 km/h
Tractive force	6 kN
Axle load	2.5 t



VP 186011 Communication Desk

MODEL: LPS 3000

Standard Delivery:

- „All in One PC“-Processing Unit with Win 7 integrated in 23" TFT Monitor, PC-Keyboard, DIN A4 Ink Jet Colour Printer
- Interface box with support and connection cable with plug-in environment module
- Pressure/Temperature module (CAN P2T2 module), plug-in card for recording of 2 pressure and 2 temperature values
- Trigger clamp with cable (6 m) for inductive RPM pick-up through ignition cable, Piezo clamp cable (6 m), Piezo clamp with 6 mm diameter
- Software module standard engine power projection cars
- 4WD expansion kit

VP 230016 Roller Sets for Cars/Vans (2 pcs.)

MODEL: R 100/1

Standard Delivery:

- Hydraulic roller set adjustment for 4WD Dyno
- 4 lashing straps with anchors

VP 160015 Radial Air Cooling Fan, mobile

MODEL: Air 7/1

Scissors Lift

VAS 6804

for Wheel Alignment

Technical data



Load capacity	4.2 t
Lifting height max.	2075 mm
Lifting/lowering time, load-dependent approx.	40 / 40 s
Runway length	4400 mm
Runway width	617 mm
Installation depth	250 mm
Operating pressure	190 bar
Drive power	2.5 kW
Power supply	3/N/PE 400 V 50 Hz
gG fuse	16 A
Hydraulic oil volume	40 l

VP 250254 Scissors Lift for Wheel Alignment with 4.2 t Load Capacity

MODEL: DUO CM 4.2 U (flush mounted)

Standard Delivery:

- Scissors Lift, MODEL: DUO CM 4.2 U
- Operation desk with control and hydraulic unit
- 4 roll-off flaps for flush-floor installation
- 2 pneumatic couplers at runway
- 8 rope loops to be used as transport aid
- Lowering system for wheel alignment with precision ratchet cylinder, Notch intervals: every 100 mm
- Double safety catch for precision under-carriage alignment of vehicles with high weight and extended wheel base (e.g. Phaeton, Touareg). No wheel-free jack applicable!

Recommended accessories:

- VAS 6495/1 Axle Jack AL II 2.6 PH

alternatively available:

VP 250237 Scissors Lift for Wheel Alignment with 4.2 t Load Capacity

MODEL: DUO CM 4.2 A (surface mounted)

Standard Delivery:

- Scissors Lift, MODEL: DUO CM 4.2 A
- Cover plates for cables and hydraulic hoses
- 2 long drive-on ramps + 2 roll bars / Overall length increased to 5900 mm
- Rest identical to VP 250254



Scissors Lift

VAS 6831

for Dialog Reception

Technical data

Load capacity	4.2 t
Lifting height max.	2075 mm
Lifting/lowering time, load-dependent approx.	40 / 40 s
Runway length	4400 mm
Runway width	617 mm
Installation depth	250 mm
Operating pressure	190 bar
Drive power	2.5 kW
Power supply	3/N/PE 400 V 50 Hz
gG fuse	16 A
Hydraulic oil volume	40 l



VP 250260 Scissors Lift
for Dialog Reception with 4.2 t Load Capacity
MODEL: DUO CM 4.2 U (flush mounted)

Standard Delivery:

- Scissors Lift, MODEL: DUO CM 4.2 U
- Operation desk with control and hydraulic unit
- 4 roll-off flaps for flush-floor installation
- 2 pneumatic couplers at runway
- 8 rope loops to be used as transport aid (only DUO CM 4.2 U/A)

Recommended accessories:

- VAS 6495/1 Axle Jack AL II 2.6 PH

alternatively available:

VP 250261 Scissors Lift
for Dialog Reception with 4.2 t Load Capacity
MODEL: DUO CM 4.2 A (surface mounted)

Standard Delivery:

- Scissors Lift MODEL: DUO CM 4.2 A
- Cover plates for cables and hydraulic hoses
- 2 long drive-on ramps + 2 roll bars / Overall length increased to 5900 mm
- Rest identical to VP 250260

Scissors Lift

VAS 791 011A

for Wheel Alignment

Technical data



Load capacity CE	5.5 t
Lifting height max.	2100 mm
Lifting/lowering time, load-dependent approx.	50 / 40 s
Runway length	5200 mm
Runway width	630 mm
Installation depth	300 mm
Operating pressure	190 bar
Drive power	2.5 kW
Power supply	3/N/PE 400 V 50 Hz
gG fuse	16 A
Hydraulic oil volume	40 l

VP 250273 Scissors Lift for Wheel Alignment with 5.5 t Load Capacity MODEL: DUO CM 5.5 U (flush mounted)

Standard Delivery:

- Scissors Lift, MODEL: DUO CM 5.5 U
- Operation desk with control and hydraulic unit
- Height-adjustable precision sliding plates, lockable at control desk, with low breakaway torque (5 Nm) and low moving force (15 N for 500 kg wheel load), 53 mm lateral motion, +/- 6 ° rotary motion
- Recess for turntables and compensation plates
- Lowering device with 8 locking modules, Manual lowering function with hand pump
- 4 roll-off flaps for flush-floor installation
- 2 pneumatic couplers at runway
- Double safety catch for precision under-carriage alignment of vehicles with high weight and extended wheel base (e.g. Phaeton, Touareg). No wheel-free jack applicable!

Recommended accessories:

- VAS 6495/1 Axle Jack AL II 2.6 PH



Scissors Lift

VAS 791 013A

for Dialog Reception

Technical data

Load capacity CE	5.5 t
Lifting height max.	2100 mm
Lifting/lowering time, load-dependent approx.	50 / 40 s
Runway length	5200 mm
Runway width	630 mm
Installation depth	300 mm
Operating pressure	190 bar
Drive power	2.5 kW
Power supply	3/N/PE 400 V 50 Hz
gG fuse	16 A
Hydraulic oil volume	40 l



VP 250276 Scissors Lift
for Dialog Reception with 5.5 t Load Capacity
MODEL: DUO CM 5.5 U (flush mounted)

Standard Delivery:

- Scissors Lift, MODEL: DUO CM 5.5 U
- Flat type
- Electronic-hydraulic synchronisation of runways and optional Wheel-Free-Jack
- Distance measurement system integrated into lifting cylinders ("Linear absolute measurement system")
- Immediate switch-off at (one-sided) collision with obstacle at minimum height difference
- 4 locking modules for the prevention of inadvertent lowering and for wheel alignment (option: "Lower onto Locks")
- Comfortable operation due to programmable limit stop
- Anti-corrosion treatment of lock seams, cavity sealing
- 4 roll-off flaps for flush-floor installation

Recommended accessories:

- VAS 6495/1 Axle Jack AL II 2.6 PH

Twin Scissors Lift

VAS 6802

Technical data



Load capacity	3.5 t
Lifting height max.	1815 mm
Lifting/lowering time, load-dependent approx.	35 / 35 s
Support plate (L / W)	1550–2100 / 605 mm
Total width (recommended)	1955 mm
Installation depth	115 mm
Operating pressure	270 bar
Drive power	2.2 kW
Power supply	3/N/PE 400 V 50 Hz
gG fuse	16 A
Synchronisation	fully automatic

VP 250251 Twin Scissors Lift with 3.5 t Load Capacity

MODEL: TWIN F IV 3.5 U (flush mounted)

Standard Delivery:

- Twin Scissors Lift, MODEL: TWIN F IV 3.5 U
- Upright operating unit with control and hydraulic unit
- Hydraulic hoses for 2 m distance between lift and power unit
- Foundation inserts to extend the support platforms (only TWIN F IV 3.5 U)

Recommended accessories:

- VAS 6803/2 long drive-over ramps (4 pcs.)
- Extension of Hydraulic Hoses
- Light Barrier Safety Device to avoid Contact with Ceiling

alternatively available:

VP 250250 Twin Scissors Lift with 3.5 t Load Capacity

MODEL: TWIN F IV 3.5 A (surface mounted)

Standard Delivery:

- Twin Scissors Lift, MODEL: TWIN F IV 3.5 A
- Cover plates for hydraulic hoses
- 2 drive-over wedges
- 4 pcs. Plastic chocks set, 47 x 132 x 340 mm
- Rest identical to VP 250251



Two Post Lift

VAS 771 003A

for Sports Cars

Technical data

Load capacity	3.0 t
Lifting height max.	2000 mm
Lifting/lowering time, load-dependent approx.	40 / 40 s
Bottom clearance of the support arms	75 mm
Adjustment range, support disc	70–110 mm
Extension range, short support arms	485–1015 mm
Extension range, long support arms	930–1505 mm
Total width	3670 mm
Drive-through width	2335 mm
Column height	3010 mm
Column width clearance	2600 mm
Drive power	2 x 3.0 kW
Power supply	3/N/PE 400 V 50 Hz
gG fuse	16 A



VP 251224 Two Post Lift for Sports Cars with 3.0 t Load Capacity MODEL: ML2C-30E 01

Standard Delivery:

- Two Post Lift, MODEL: ML2C-30E 01, with operating unit in lifting column
- Electro-mechanical brake as standard
- A space-saving operating and control unit integrated in the lifting column with 16-symbol text display for operating and service instructions, featuring a robust membrane keypad and large buttons
- Sports Car Support Arms (4 pcs.)
- Double-telescopic, short and asymmetrical support arms (3 parts), incl. plug-in system with support plate extension 50 mm
- Cable bridge
- LED ambient light
- Low wear through oil lubrication
- Spindle oil (0.25 l)

Recommended accessories:

- Special Support AUDI TT/TTS/TT RS (4pcs.), suitable for Lifting Points of Vehicle Jack (VZ 971346)
- Power Set

Two Post Lift

VAS 771 035

Technical data



Load capacity	3.5 t
Lifting height max.	2000 mm
Lifting/lowering time, load-dependent approx.	40 / 40 s
Bottom clearance of the support arms	105 mm
Adjustment range, support disc	90–125 mm
Extension range, short support arms	660–1260 mm
Extension range, long support arms	920–1505 mm
Total width	3770 mm
Drive-through width	2435 mm
Column height	3010 mm
Column width clearance	2700 mm
Drive power	2 x 3.0 kW
Power supply	3/N/PE 400 V 50 Hz
gG fuse	16 A

**VP 251225 Two Post Lift
with 3.5 t Load Capacity
MODEL: ML2C-35E 01**

Standard Delivery:

- Two Post Lift, MODEL: ML2C-35E 01, with operating unit in lifting column
- Electro-mechanical brake as standard
- A space-saving operating and control unit integrated in the lifting column with 16-symbol text display for operating and service instructions, featuring a robust membrane keypad and large buttons
- Double-telescopic, short and asymmetrical support arms (3 parts)
- Support disc plug-in system
- Cable bridge
- LED ambient light
- Low wear through oil lubrication
- Spindle oil (0.25 l)

Recommended accessories:

- Non-Skid Device for VW van T4 (VZ 975050)
- Support Plate Extension 100 mm galvanized, 2 pcs. (VZ 971221)
- Power Set



Two Post Lift

VAS 771 025A

Technical data

Load capacity CE	5.5 t
Lifting height max.	2000 mm
Lifting/lowering time, load-dependent approx.	40 / 40 s
Bottom clearance of the support arms	150 mm
Adjustment range, support disc	115–140 mm
Drive-through width	2720 mm
Max. total height (with cable bridge)	5604 mm
Weight	1450 kg
Drive power	2 x 4.0 kW
Power supply	3/N/PE 400 V 50 Hz
gG fuse	25 A



VP 451176 Two Post Lift with 5.5 t Load Capacity MODEL: ML2C-55E 01

Standard Delivery:

- Two Post Lift, MODEL: ML2C-55E 01, with operating unit in lifting column
- Electro-mechanical brake as standard
- Symmetrical support arms, double telescopic (3-part)
- Support disc plug-in system
- Cable bridge
- LED ambient light
- Low wear through oil lubrication
- Spindle oil (0.25 l)

Recommended accessories:

- VAS 5015 A/1 Special-Prism for VW Crafter
- VAS 5015 A/2 Support Plate Extension
- VAS 5015 A/3 Wheel-Engaging Support Forks retrofit kit
- VAS 5015 A/4 Support arbor VW Crafter
- Power Set

Two Post Lift

VAS 771 013

Technical data



Load capacity	6.5 t
Lifting height max.	2110 mm
Lifting/lowering time, load-dependent approx.	45 / 45 s
Bottom clearance of the support arms	165 mm
Adjustment range, support disc	80–110 mm
Drive-through width	2810 mm
Extension range, long support arms max.	1880 mm
Extension range, long support arms min.	860 mm
Drive power	2 x 4.0 kW
Power supply	3/N/PE 400 V 50 Hz
gG fuse	35 A

VP 451004 Two Post Lift
Electro-mechanical with 6.5 t Load Capacity
MODEL: ECONLIFT 6500

Standard Delivery:

- 2 columns with control unit
- Symmetrical support arms, double telescopic (3-part)
- Roller bearing support arm support, including positioning aid
- Support disc plug-in system
- 4 Support Plate Extension 50 mm, galvanized
- Spindle oil (0.25 l)

Recommended accessories:

- VAS 5015 A/1 Special-Prism for VW Crafter
- VAS 5015 A/2 Support Plate Extension
- VAS 5015 A/3 Wheel-Engaging Support Forks retrofit kit
- VAS 5015 A/4 Support arbor VW Crafter
- Power Set



Four Post Lift

VAS 6140

for Wheel Alignment

Technical data

Load capacity	4.0 t
Lifting height max.	1965 mm
Lifting/lowering time, load-dependent approx.	30 / 30 s
Runway length	4400 mm
Runway width	630 mm
Driving platform clearance min.	750 mm
Driving platform clearance max.	1020 mm
Drive power	2.2 kW
Power supply	3/N/PE 400 V 50 Hz
gG fuse	16 A
Hydraulic oil volume	10 l



VP 251132 Four Post Lift with 4.0 t Load Capacity MODEL: CARLIFT II 4.0

Standard Delivery:

- Four Post Lift, MODEL: CARLIFT II 4.0
- Locking device for wheel alignment
- One runway adjustable (without axle jack)

Recommended accessories:

- VAS 6495/1 Axle Jack AL II 2.6 PH
Inside runways not adjustable

Four Post Lift

VAS 772 003

for Wheel Alignment

Technical data



Load capacity	5.5 t
Lifting height max.	1965 mm
Lifting/lowering time, load-dependent approx.	30 / 30 s
Runway length "usable"	5520 mm
Runway width	630 mm
Driving platform clearance min.	750 mm
Driving platform clearance max.	1020 mm
Drive power	2.2 kW
Power supply	3/N/PE 400 V 50 Hz
gG fuse	16 A
Hydraulic oil volume	10 l

VP 251198 Four Post Lift
with 5.5 t Load Capacity
MODEL: CARLIFT II 5.5

Standard Delivery:

- Four Post Lift, MODEL: CARLIFT II 5.5
- Locking device for wheel alignment
- One runway adjustable (without axle jack)

Recommended accessories:

- VAS 6495/1 Axle Jack AL II 2.6 PH
- Inside runways not adjustable



Two Post In-Ground Lift

VAS 6259

with Driving Platform for Reception/Final Inspection

Technical data

Load capacity	3.5 t
Lifting height max.	2016 mm
Lifting/lowering time, load-dependent approx.	30 / 20 s
Piston centers	1350 mm
Runway length	4400 mm
Installation depth	2382 mm
Square tube dimensions	180 mm
Operating pressure	180 bar
Drive power	3.0 kW
Power supply	3/N/PE 400 V 50 Hz
gG fuse	16 A
Hydraulic oil volume	28 l



**VP 252207 Two Post In-Ground Lift
with 3.5 t Load Capacity
MODEL: ZS SQUARE II 3.5 P with Driving Platform Bridge**

Standard Delivery:

- Two Post In-Ground Lift, MODEL: ZS SQUARE II 3.5 P
- Driving platform bridge granulate coats

Recommended accessories:

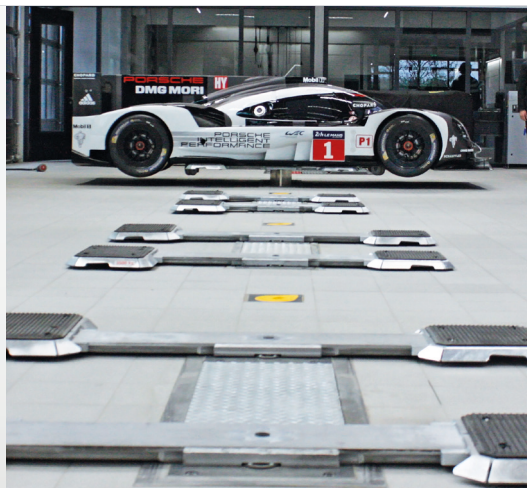
- VAS 6495/1 Axle Jack AL II 2.6 PH
- Floor compensation, pneumatic
- Auto chocks
- LED Illuminant
- Power module / E-BOX

Two Post In-Ground Lift

VAS 6646

with Flat Lifting Heads

Technical data



Load capacity	3.5 t
Lifting height max.	1960 mm
Lifting/lowering time, load-dependent approx.	30 / 20 s
Piston centers	1350 mm
Installation depth	2382 mm
Square tube dimensions	180 mm
Lengthways holder	1400–2000 mm
Operating pressure	160 bar
Drive power	3.0 kW
Power supply	3/N/PE 400 V 50 Hz
gG fuse	16 A
Hydraulic oil volume	28 l

VP 252210 Two Post In-Ground Lift with 3.5 t Load Capacity MODEL: ZS SQUARE II 3.5 FT with Flat Lifting Heads

Standard Delivery:

- Two Post In-Ground Lift, MODEL: ZS SQUARE II 3.5 FT
- Flat lifting heads with extra wide supports, MODEL: R5G 3.5 with sturdy rubber pads suitable for vehicles with distant lifting points (2 pcs. front)
- Rubber Chocks Set pyramidal h = 60 mm (4 pcs.)
- Flat lifting platform, hot-dip galvanized

Recommended accessories:

- Flat lifting heads extended 1400–2100 mm
- Power module / E-BOX



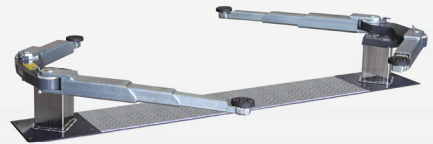
Two Post In-Ground Lift

VAS 782 047

with Swing Arm Support

Technical data

Load capacity	3.5 t
Lifting height max.	2006 mm
Lifting/lowering time, load-dependent approx.	30 / 20 s
Bottom clearance of the support arms	77, 89, 101 mm
Piston centers	2500 mm
Installation depth	2382 mm
Square tube dimensions	180 mm
Swing arm extension	560–1140 mm
Adjustment range, support disc	75–106 mm
Operating pressure	160 bar
Drive power	3.0 kW
Power supply	3/N/PE 400 V 50 Hz
gG fuse	16 A
Hydraulic oil volume	28 l



**VP 252308 Two Post In-Ground Lift
with 3.5 t Load Capacity
MODEL: ZS SQUARE II 3.5 S with Swing Arm Support**

Standard Delivery:

- Two Post In-Ground Lift, MODEL: ZS SQUARE II 3.5 S
- Support arms: galvanized

Recommended accessories:

- Power module / E-BOX

alternatively available:

**VP 252309 Two Post In-Ground Lift
with 3.5 t Load Capacity (for Sports Cars)
MODEL: ZS SQUARE II 3.5 SP with Swing Arm Support SP**

Standard Delivery:

- Two Post In-Ground Lift, MODEL: ZS SQUARE II 3.5 SP
- Support arms: galvanized

Two Post In-Ground Lift

VAS 782 033A

with Swing Arm Support

Technical data



Load capacity	5.5 t
Lifting height max.	2061 mm
Lifting/lowering time, load-dependent approx.	35 / 35 s
Adjustment range, support disc	114–161 mm
Piston centers	2500 mm
Installation depth	2390 mm
Square tube dimensions	180 mm
Operating pressure	180 bar
Drive power	3.0 kW
Power supply	3/N/PE 400 V 50 Hz
gG fuse	16 A
Hydraulic oil volume	28 l

**VP 252310 Two Post In-Ground Lift
with 5.5 t Load Capacity
MODEL: ZS SQUARE II 5.5 S with Swing Arm Support**

Standard Delivery:

- Two Post In-Ground Lift, MODEL: ZS SQUARE II 5.5 S
- Support Plate Extension 50 mm
- Holding Device for Support Plate Extension (2 pcs.), can be mounted to Lift or Wall
- Magnetic Wheel Nut Tray (2 pcs.)

Recommended accessories:

- VAS 5015 A/1 Special-Prism for VW Crafter
- VAS 5015 A/2 Support Plate Extension
- Power module / E-BOX



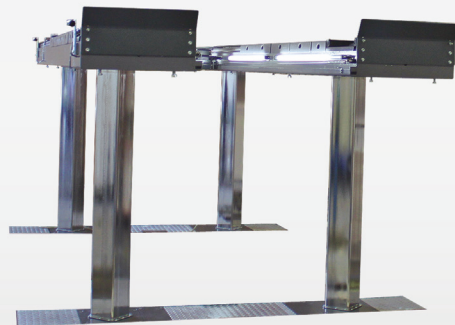
Four Post In-Ground Lift

VAS 783 015

for High-Precision Wheel Alignment

Technical data

Load capacity	5.0 t
Max. lifting height	2175 mm
Lifting/lowering time, load-dependent approx.	38 / 38 s
Piston centers	1570 mm
Post axle spacing in driving direction	3400 mm
Runway length	4400 mm
Square tube dimensions	180 mm
Installation depth	2390 mm
Operating pressure	180 bar
Drive power	2 x 3.0 kW
Power supply	3/N/PE 400 V 50 Hz
gG fuse	25 A
Hydraulic oil volume	56 l



VP 252311 Four Post In-Ground Lift 4400 with 5.0 t Load Capacity MODEL: VS SQUARE II 5.0 with Runways

Standard Delivery:

- Four Post In-Ground Lift, MODEL: VS SQUARE II 5.0, runways surface mounted
- Lowering system for wheel alignment
- Double installation box with clamping system, Piston centers 1580 mm

Recommended accessories:

- VAS 6495/1 Axle Jack hydropneumatic, MODEL: AL II 2.6 PH
- Power module / E-BOX

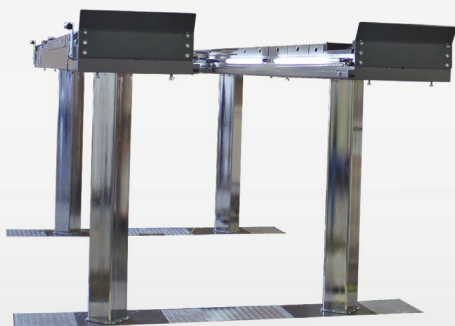
Four Post In-Ground Lift

VAS 783 013A

for High-Precision Wheel Alignment

Technical data

Load capacity	6.5 t
Max. lifting height	2050 mm
Lifting/lowering time, load-dependent approx.	38 / 38 s
Piston centers	1580 mm
Post axle spacing in driving direction	3400 mm
Runway length	5600 mm
Square tube dimensions	180 mm
Installation depth	2382 mm
Operating pressure	180 bar
Drive power	2 x 3.0 kW
Power supply	3/N/PE 400 V 50 Hz
gG fuse	25 A
Hydraulic oil volume	56 l



VP 252312 Four Post In-Ground Lift 5600 with 6.5 t Load Capacity MODEL: VS SQUARE II 6.5 with Runways

Standard Delivery:

- Four Post In-Ground Lift, MODEL: VS SQUARE II 6.5, runways surface mounted
- Lowering system for wheel alignment
- Double installation box with clamping system, Piston centers 1580 mm

Recommended accessories:

- VAS 6495/1 Axle Jack hydropneumatic, MODEL: AL II 2.6 PH
- Power module / E-BOX



Workshop Equipment

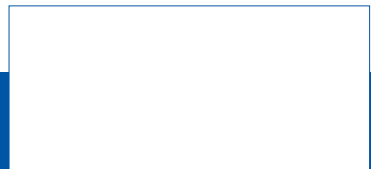


GLOBAL PLAYER

MAHA Maschinenbau Haldenwang GmbH & Co. KG
Hoyen 20 | 87490 Haldenwang | Germany

Phone +49 8374 585 0
Fax +49 8374 585 497
Mail sales@maha.de

www.maha.de



... in more than 150 countries worldwide

BRS70201-en 06 - Subject to change without notice! The illustrations also show options which are not standard equipment.