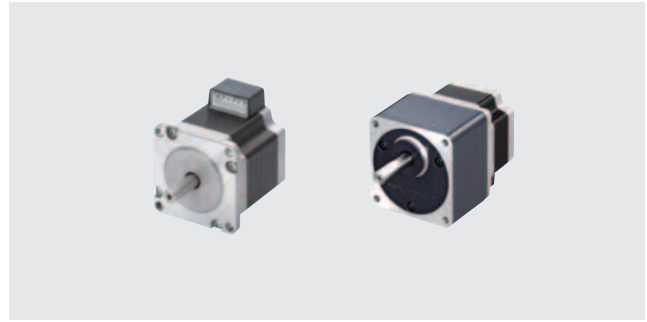


2-Phase Stepping Motors High-Torque PKP Series

● Connection Information
 Technical reference → Page G-1
 Safety standards → Page H-2

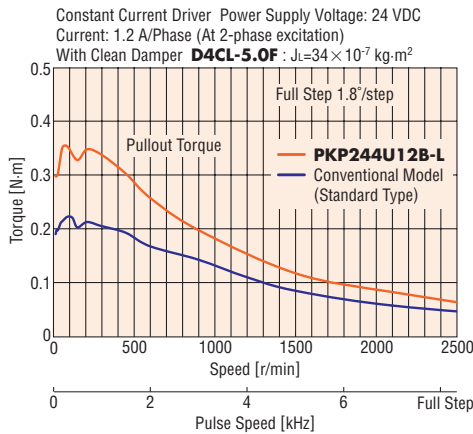
High-torque **PKP** Series offers a standard type with a resolution of 200 steps per revolution (1.8°/step) and a geared type (high torque, higher resolution). The dedicated driver is required separately to operate the motor.



Features

● High-Torque Design

PKP Series generating high torque of approximately 1.2 to 1.7 times (maximum holding torque) the **PK** Series standard type of same size.



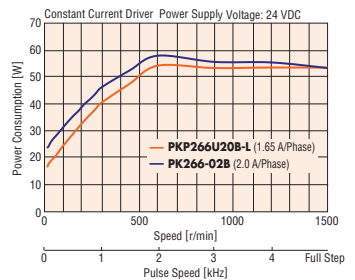
The Advantages of Using a High Torque Motor

● Lower Power Consumption and Lower Heat Generation

If the running current of a **PKP** Series motor is decreased and the motor is operated at the same torque as the **PK** Series standard type, current consumption and temperature rise can be reduced.

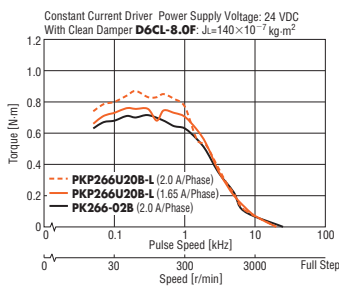
Power consumption can be reduced

Comparison of driver power consumption when low-speed torque is tailored to the **PK** Series standard type



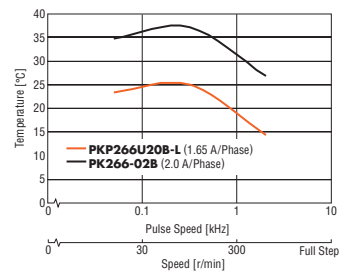
Power consumption reduced by **20%** (at low speed)

Characteristics of Decreased Running Current in **PKP** Series Motors



Temperature rise can be reduced

Comparison of motor surface temperature rise when low-speed torque is tailored to the **PK** Series standard type

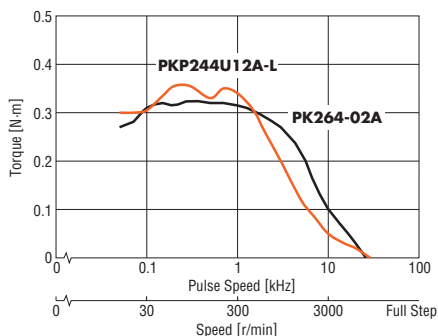


Temperature increases of **10°C** and more are suppressed

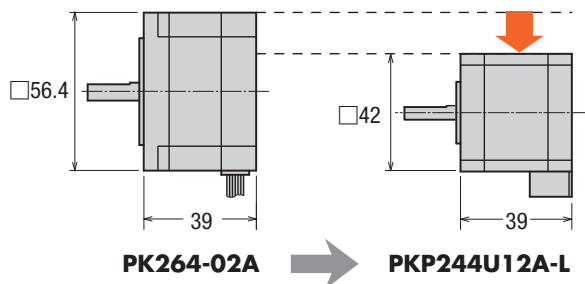
Downsizing of Your Motor

By using a **PKP** Series motor, which has the same torque as the **PK** Series standard type, the motor can be downsized.

Comparison of Speed-Torque Characteristics between **PKP244U12A-L** and **PK264-02A**



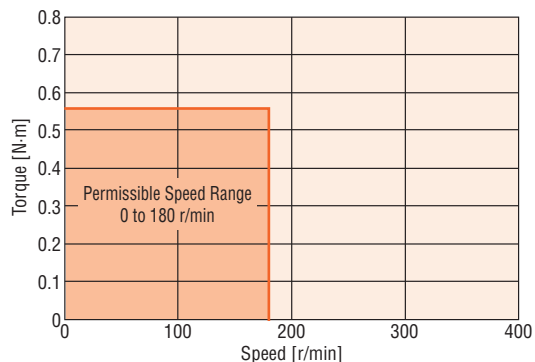
The motor can be downsized, even if the torque is the same!



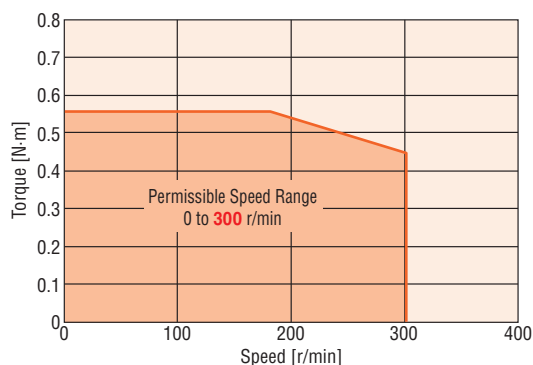
SH Geared Type

This geared type is effective for reducing speed, increasing torque, higher resolution and low vibration. The **PK** Series has a broader permissible speed range than the **SH** geared type, and is also easier to use.

PK Series PK243A1-SG10



PKP Series PKP243U09A-SG10



Motor Lineup

Bipolar and unipolar models are available for all types.

	Motor Frame Size				
	20 mm	28 mm	35 mm	42 mm	56.4/60 mm
Standard Type					
SH Geared Type					