

# PRØV! TAIS CUBE - Montageskab, der tåler mosten



## Montageskab/fordelingstavle til særligt aggressive miljøer

TAIS-Cube er et montageskab/fordelingstavle i kunststof, som er særdeles velegnet til industrielle/aggressive og maritime installationer.

Skabet er i halogenfrit materiale og modstandsdygtigt mod de fleste kemikalier samt brandtestet til 960°C

- Materiale: Halogenfrit thermosetting (GRP)
- Selvslukkende klasse V0
- Skruer og hængsler: Rustfri stål.
- Montageplade: Stål / GRP
- Klik direkte på DIN-skinne
- Inder dør i GRP
- Farve: Grå RAL7035
- Tæthedsklasse: IP66 / 67
- Slagstyrke: IK10
- Temperaturområde: -30°C - 70°C
- Glowwire test: 960°C
- Isolationsklasse: II M
- Frekvensområde: 0-1000Hz
- Fås med transparent eller blind dør



Modstandsdygtig  
ovf. de fleste  
kemikaler samt  
brandtestet til  
960°C

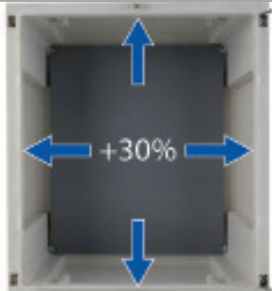
GOOD DESIGN  
INTERNATIONAL AWARD



TAIS Cube har en tæthed på IP66.



Stålrammen gør det nemt at montere modulære komponenter og føringsveje samt at fortråde komponenterne til og fra montageskabet.



Montageskabet er konstrueret således at der er maksimal plads til komponenterne. Mellem bagpladen og døren, uanset udgave, er der 15% mere plads sammenlignet med andre skabe i tilsvarende størrelse på markedet.

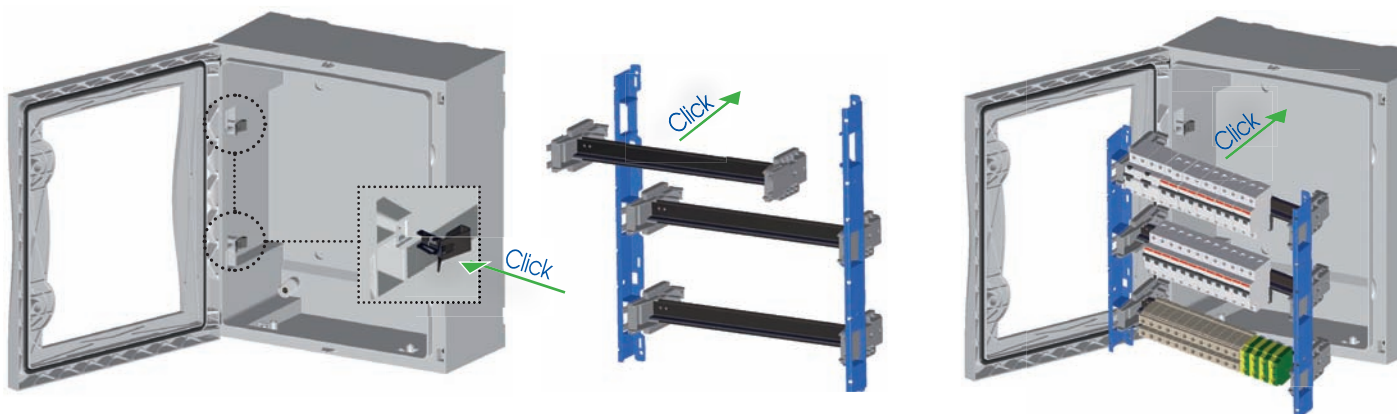



Dørhængslerne, som er lavet af rustfri stål og forniklet messing, er placeret så langt fra kanten at risikoen for brud i tilfælde af at skabet tabes er minimal.



Size	N. vertikale moduler	N. EN 50022 moduler	Udv. dimension	Indv. brugbar dimension	Tavle med blind dør	Tavle med transparent dør
1	-	-	260x305x160	200x250x100	<b>550001</b> 8014950050833	<b>550031</b> 8014950050901
2	3	36 (3X12)	340x430x180	280x375x120	<b>550002</b> 8014950050840	<b>550032</b> 8014950050918
3	3	54 (3X18)	450x505x220	390x450x160	<b>550003</b> 8014950050857	<b>550033</b> 8014950050925
4	4	72 (4X18)	450x655x220	390x600x160	<b>550004</b> 8014950050864	<b>550034</b> 8014950050932
5	4	96 (4X24)	560x655x260	500x600x200	<b>550005</b> 8014950050871	<b>550035</b> 8014950050949
6	5	140 (5X28)	630x810x300	570x750x235	<b>550006</b> 8014950050888	<b>550036</b> 8014950050956
7	5	200 (5X40)	850x1060x350	790x1000x290	<b>550007</b> 8014950050895	<b>550037</b> 8014950052967











THE REVOLUTIONARY  CLIPPING SYSTEM



 insert the holders

 assemble the frame

 insert the frame

AUTOMATION			DISTRIBUTION 					
								
Back plate in steel	Back plate in thermosetting (GRP)	Inner door in thermosetting (GRP)	Click Cube functional frame	Click Cube windowed panel	Click Cube blind panel	Click Cube blind double panel	Click Cube EN 50022 rail	Click Cube partial back plate in steel
550601	550621	-	-	-	-	-	-	-
550602	550622	550502	550562	550522	550542	550552	550582	550632
550603	550623	550503	550563	550523	550543	550553	550583	550633
550604	550624	550504	550564					
550605	550625	550505		550525	550545	550555	550585	550635
550606	550626	550506	550566	550526	550546	550556	550586	550636
550607	-	550507	550567	550527	550547	550557	550587	550637

COMMON ACCESSORIES				
				
Set of 4 brackets		Security lock	Support for pole mounting	
Zincod steel	Stainless steel		For sizes 1-2	For sizes 3-4-5
550640	550641	550680	550642	550643



TAIS Cube series distribution and automation boards are a range of products in thermosetting (GRP) for heavy duty uses with IP66 protection rating and resistant to UV rays. The system is composed of 7 sizes in the versions with blind or transparent door. The accessories to use the board in typical configurations of automation are the back plate in steel sheet or in thermosetting (GRP) and the inner door in thermosetting (GRP), equipped with opening handles and that can be installed at two different positions and fixed on both sides.

In the configuration for distribution, the steel frame allows modular compositions with blind or windowed moulded panels, EN 50022 rails that can be regulated at different depths, and partial back plates. All the elements can be fixed with the "Click Cube" clipping system.

Wiring can be done on the bench, out of the board or directly inside the board. The door is fixed to the back box with elements in nicked brass and stainless steel located far from the edges and that allows an opening wider than 180°.

Conformity to standards	IEC/EN 62208
Material	Thermosetting (GRP)
Protection rating (IP as per IEC/EN 60529)	IP66
Colour	RAL7035
Resistance to abnormal heat and fire ("Glow Wire" as per IEC/EN 60695-2-10)	960°C
Self-extinguishing grade (as per UL94)	V0
Resistance to impacts (IK rating as per IEC/EN 62262)	IK10
Rated frequency	0 - 1000 Hz
Rated voltage AC	AC 1000 V <sub>ac</sub>
Rated voltage DC	DC 1500 V <sub>dc</sub>
Rated impulse seal voltage	8kV
Maximum short-circuit current	I <sub>dc</sub> 35kA
Insulation class	II
Operating temperature	-30°C - +100°C



**Resistance to chemical agents**

WATER	SALINE ATMOSPHERES	ACIDS		CHEMICAL BASES		SOLVENTS			
		CONCENTRATED	DILUTED	CONCENTRATED	DILUTED	ALCOHOL	ACETONE	PERCHLOROETHYLENE	BENZENE
↑	↑	→	↑	↑	↑	↑	↑	↑	↑
OILS		FATS		AMMONIA	OXIDIZERS	INORGANIC SALTS	GASOLINE	DETERGENTS	U.V. RAYS
MINERAL	VEGETABLE	ANIMAL	SYNTHETIC						
↑	↑	↑	↑	↑	↑	↑	↑	↑	↑

Legend: ↑ high resistance → partial resistance



**Distribution boards in thermosetting (GRP) with blind door IP66**

Size	External dimensions (mm)	Internal usable dimensions (mm)	Power dissipation allowed when empty (W)	Palazzoli code	Pack Q.ty
1	260x305x160	200x250x100	53	<b>550001</b>	1
2	340x430x180	280x375x120	90	<b>550002</b>	1
3	450x505x220	390x450x160	138	<b>550003</b>	1
4	450x655x220	390x600x160	174	<b>550004</b>	1
5	560x655x260	500x600x200	217	<b>550005</b>	1
6	630x810x300	570x750x235	302	<b>550006</b>	1
7	850x1060x350	790x1000x290	506	<b>550007</b>	1

**Equipment included:** key with triangular insert, screwcaps for double insulation.

**Note:** the completed installation in conditions of extremely variable climate may require the use of anti-condensation devices.

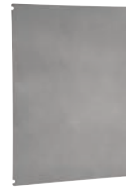


**Distribution boards in thermosetting (GRP) with transparent door IP66**

Size	External dimensions (mm)	N. EN 50022 modules	Power dissipation allowed when empty (W)	Palazzoli code	Pack Q.ty
1	260x305x160	-	53	<b>550031</b>	1
2	340x430x180	36 (3x12)	90	<b>550032</b>	1
3	450x505x220	54 (3x18)	138	<b>550033</b>	1
4	450x655x220	72 (4x18)	174	<b>550034</b>	1
5	560x655x260	96 (4x24)	217	<b>550035</b>	1
6	630x810x300	140 (5x28)	302	<b>550036</b>	1
7	850x1060x350	200 (5x40)	506	<b>550037</b>	1

**Equipment included:** key with triangular insert, screwcaps for double insulation.

**Note:** the completed installation in conditions of extremely variable climate may require the use of anti-condensation devices.



**Back plates in steel**

Size	Dimensions (mm)	Palazzoli code	Pack Q.ty
1	180x240	<b>550601</b>	5
2	260x370	<b>550602</b>	5
3	370x445	<b>550603</b>	5
4	370x595	<b>550604</b>	1
5	475x595	<b>550605</b>	1
6	550x745	<b>550606</b>	1
7	765x995	<b>550607</b>	1

**Equipment included:** complete with screws for mounting.



**Back plates in thermosetting (GRP)**

Size	Dimensions (mm)	Palazzoli code	Pack Q.ty
1	180x240	<b>550621</b>	5
2	260x370	<b>550622</b>	5
3	370x445	<b>550623</b>	5
4	370x595	<b>550624</b>	1
5	475x595	<b>550625</b>	1
6	550x745	<b>550626</b>	1

**Equipment included:** complete with screws for mounting.



**Inner doors in thermosetting (GRP)**

Size	Dimensions (mm)	Palazzoli code	Pack Q.ty
2	280x375	<b>550502</b>	4
3	388x450	<b>550503</b>	4
4	388x600	<b>550504</b>	4
5	496x600	<b>550505</b>	1
6	568x750	<b>550506</b>	1
7	784x1000	<b>550507</b>	1

**Characteristics:** the inner door is reversible and easy to open through the handles. It can be used as back plate.



**Click Cube functional frames** in steel, for the installation of front panels and EN 50022 rails



Size	N. installable panels	Palazzoli code	Pack Q.ty
2	3	<b>550562</b>	6
3	3	<b>550563</b>	6
4-5	4	<b>550564</b>	4
6	5	<b>550566</b>	2
7	5	<b>550567</b>	1

**Equipment included:** complete with holders for mounting.

**Characteristics:** it allows the wiring of the modular panels outside of the board and the installation of EN 50022 at different heights.



**Click Cube front windowed panels** with EN 50022 for modular devices



Size	Height (mm)	N. EN 50022 modules	Palazzoli code	Pack Q.ty
2	125	12	<b>550522</b>	6
3-4	150	18	<b>550523</b>	6
5	150	24	<b>550525</b>	4
6	150	28	<b>550526</b>	4
7	200	40	<b>550527</b>	1

**Equipment included:** modular covers.

**Characteristics:** quick fixing with ¼ turn screw insert.



**Click Cube front blind panels** at single height



Size	Height (mm)	Palazzoli code	Pack Q.ty
2	125	<b>550542</b>	6
3-4	150	<b>550543</b>	6
5	150	<b>550545</b>	4
6	150	<b>550546</b>	4
7	200	<b>550547</b>	1

**Characteristics:** quick fixing with ¼ turn screw insert.



**Click Cube front blind panels** at double height



Size	Height (mm)	Palazzoli code	Pack Q.ty
2	250	<b>550552</b>	4
3-4	300	<b>550553</b>	4
5	300	<b>550555</b>	1
6	300	<b>550556</b>	1
7	400	<b>550557</b>	1

**Characteristics:** quick fixing with ¼ turn screw insert.



**Click Cube EN 50022 rails** reinforced for frames



Size	N. EN 50022 modules	Palazzoli code	Pack Q.ty
2	12	<b>550582</b>	6
3-4	18	<b>550583</b>	6
5	24	<b>550585</b>	2
6	28	<b>550586</b>	2
7	40	<b>550587</b>	1

**Equipment included:** complete with screws for mounting.



**Click Cube partial back plates** in steel, adjustable in depth



Size	Height (mm)	Palazzoli code	Pack Q.ty
2	125	<b>550632</b>	1
3-4	150	<b>550633</b>	1
5	150	<b>550635</b>	1
6	150	<b>550636</b>	1
7	200	<b>550637</b>	1

**Equipment included:** complete with screws for mounting.



Set of **brackets**  
for wall mounting

N. brackets	Material	Palazzoli code	Pack Q.ty
4	Zincod steel	550640	20
4	Stainless steel	550641	5

**Characteristics:** they can be mounted horizontally, vertically or hidden, retaining the double insulation.



Pair of **accessories**  
for pole mounting

Size	Material	Palazzoli code	Pack Q.ty
1-2	Steel	550642	1
3-4-5	Steel	550643	1

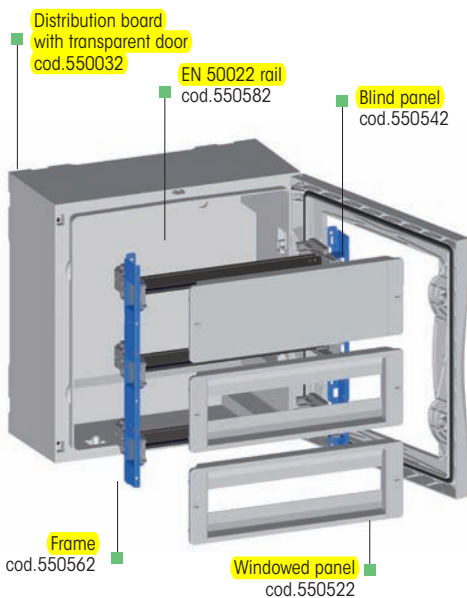
**Characteristics:** predispositions for metal cable tie for mounting on poles with diameter larger than 80mm.



**Security lock**  
with handle

N. keys	Material	Palazzoli code	Pack Q.ty
2	Steel	550680	10

**Characteristics:** closing with Yale code key.



**Click Cube**  
spacer kit



Size	Length (mm)	Palazzoli code	Pack Q.ty
2	70	550662	1
3-4	110	550663	1
5	150	550665	1
6	190	550666	1
7	240	550667	1

**Note:** the kit must be used to install Click Cube functional frames in the distribution boards without predisposition (before 2015).



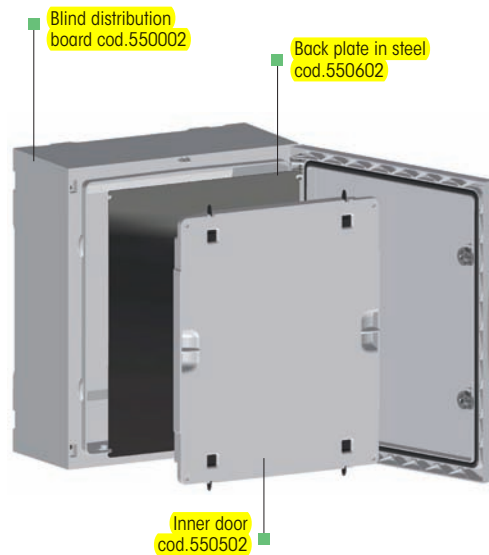
**Click Cube**  
brackets for fixing cable trunkings



N. brackets	Material	Palazzoli code	Pack Q.ty
8	Steel	550648	1

**Equipment included:** complete with screws for mounting.

**Note:** for all the sizes of functional frames.



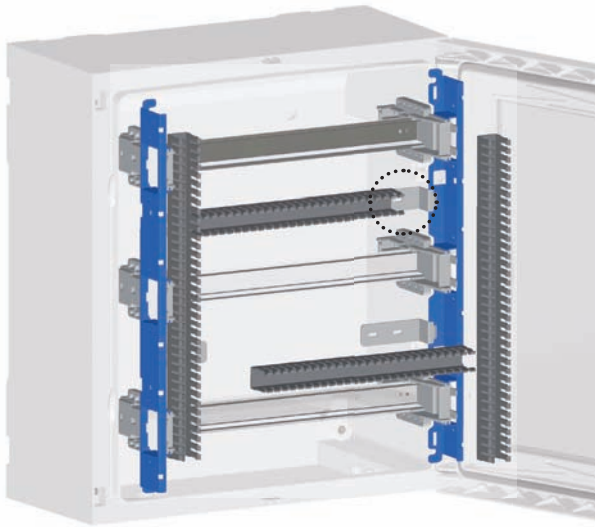
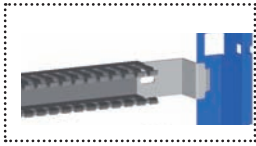




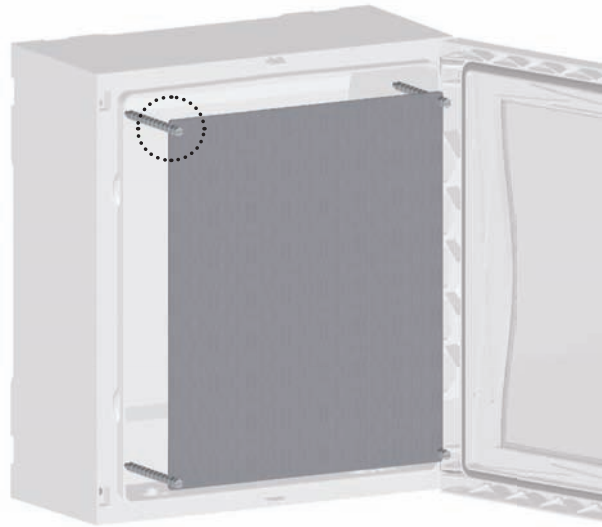
**MORE ADVANTAGES**



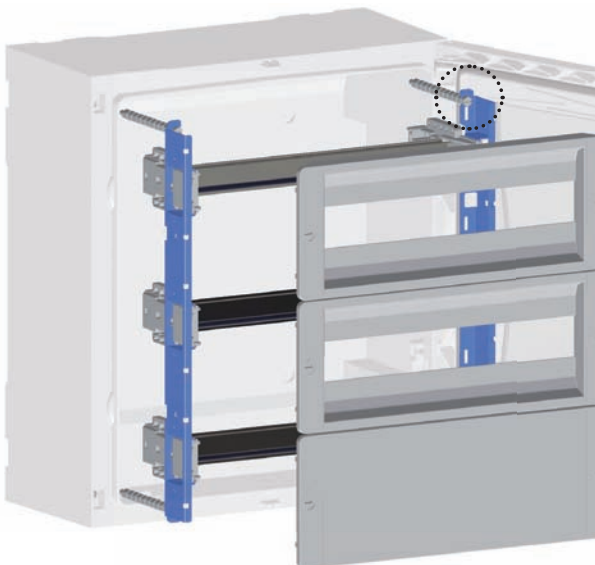
**WITH TAIS CUBE**



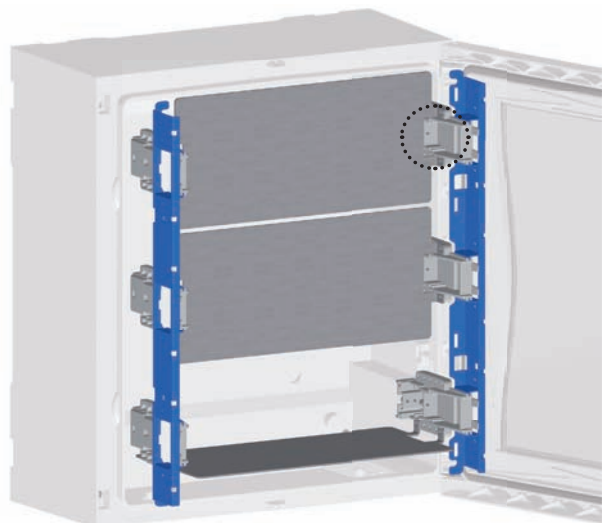
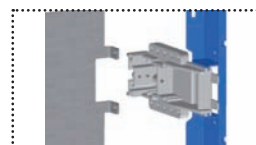
**FRAME + BRACKETS + TRUNKINGS**  
Fixing of the cable trunkings horizontally and vertically using the brackets



**SPACERS + BACK PLATE**  
Back plate adjustable in depth using the spacer



**FRAME + PANELS + SPACERS**  
Frame adjustable in depth using the spacer



**FRAME + PARTIAL BACK PLATES**  
Partial back plate adjustable in depth or in flat position



**“Vi vil gennem  
velkvalificerede medarbejdere  
tilbyde vores kunder en  
innovativ og fleksibel montageafdeling,  
hvor alle opgaver – store som små –  
vil blive udført til aftalt tid og  
i vores sædvanlige høje kvalitet.”**



**Henrik Christoffersen**  
**Logistikchef**  
email: hch@wexoe.dk

## **Montageafdelingen hjælper dig med:**

- Bearbejdning af rack
- Produktion af lågudsnit
- Klip af DIN-skiner i speciel mål og tilpasning af nulleleder-skiner
- Målerklemrækker og almen klemmemontage
- Installations-standere til kontor og butik
- Boligtavler
- Kortmagasiner
- CNC-bearbejdning af kasser i kunststof og metal
- CNC fræsning
- Produktion af tele- og netværkskabler i kobber og fiber
- Loddeopgaver
- Opmærkning af ledningsmærker