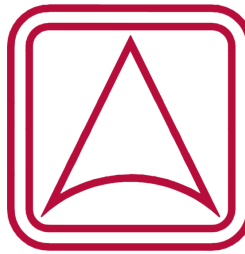


VACUUM CNC

Vacuum clamping for cnc machines





INDEX

- SCM / Morbidelli	3 - 9
- Homag, Weeke, Masterwood, Felder...	10 - 15
- Nesting	16 - 17
- Biesse	18 - 22
- Busellato & more	23 - 30
- Mechanical clamps	31
- Other features	32

Origins

Vacuum-CNC has been working throughout all these years in unifying in our brand all the subjection systems by vacuum for mechanising centres that exist in the market right now, adding certain improvements to work easily and help out in the saving of our clients.

"Vacuum-CNC" System

The main difference between our brand and others consists on separate the vacuum block in two pieces, base (inferior black part in contact with the milling center) and the cup (superior red part which holds the board or the piece to work out), this division offers quite huge advantages:

- Easy and fast to exchange the suction area.
- All the cups turn 360 degrees staying fixed when turning on the vacuum.
- It allows us to work at many different heights:
 - By fixing intermediate lifters between the base and the cup.
 - By placing cups of different heights.
- All of our vacuum cups have touch valve, so we can hold the vacuum block on the table even if they do not need to be used without losing vacuum.
- It allows, in case of a broken cup or need of a new suction area, to replace only the cup, what leads to a significant economic saving.
- The cups enclose the superior vacuum by a sealing rubber, very affordable and easy to replace. If it gets broken (until a 7mm depth) we can fix the vacuum cup at 100% of its capacity simply by changing the damaged gum part.
- For enterprises that have more than one mechanising centre with different vacuum cups, thanks to our system in two pieces it could be studied the point of combining the heights so that we can use the same cups in both milling centres (sometimes it may be necessary to change the height in which it works, otherwise, the combination is not possible).
- For the majority of models it exists the cup system with board lifter included. It exists for both formats, the vacuum-cnc system and the compact one.

"Compact" System

The compact is the simplest model. It is made in one piece, with no possibility of turning or change the suction surface.

However, in some models we have found it interesting to manufacture it, offering a cheaper option in those cases that do not require the versatility of the Vacuum-cnc System.

Thanks to being made of technical plastic, It won't affect the mill in case of an accident.

As long as it's possible, It will include the spotted tablet to create different suction zones or to enlarge its useful life.

All the vacuum cups have a touch valve which retains the vacuum.

For the compact system it also exists the possibility of adding the rise panel option.



VACUUM BLOCK BS01

FOR SCM AND MORBIDELLI

Vacuum block for different models of SCM and Mordibelli.

The plastic used has certain flexibility and memory, for what it won't stretch as the original ones, which its fixation to the bar decreases with the use.

This model takes all the advantages of the Vacuum-cnc system.

Standard set (Base + Cup): 120 X 120 X 32.7 mm

(Different heights available)

BASES

BS01N



MEASURES:

120 X 120 X 17.7 mm

Alongside the CA cups of 15mm gives the height of the manufacturer (32.7mm)

- BS01N Standard base

BS01R



- BS01R Base with hose connection: For machines with vacuum direct to the vacuum block

CUPS



CA12015T
120 x 120 x 15



CA10015T
120 x 100 x 15



CA08015N
120 x 80 x 15



CA07015N
120 x 70 x 15



CA06015N
120 x 60 x 15



CA05015N
120 x 50 x 15



CA04015N
120 x 40 x 15



CA03515N
120 x 35 x 15



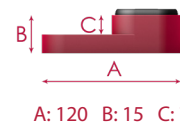
CA03015N
120 x 30 x 15



CA05015D
120 x 50 x 15



CA05015L
120 x 50 x 15



*(Possibility of making different heights and shapes depending on the customer needs).

*SCM / Morbidelli is a registered and protected trademark. These products have been developed by Vacuum cnc specifically for machining centers CNC of SCM / Morbidelli.

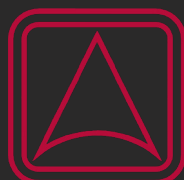
CLAMPS

PR01N



MEASURES:

120 X 120 X 32.7 mm



VACUUM CNC



VACUUM BLOCK BS03

FOR SCM AND MORBIDELLI

The base gets screwed only once, from there we will have all the options of the **Vacuum-cnc** system. It has a metal plaque of 3mm which makes it totally rigid at the time of screwing. In difference with the original ones, this system allows us working with narrow cups and realising every kind of tasks.

BASES

BS03N



Standard set (Base + Cup): **158 X 120 X 21.4 mm**
(Differents heights available)

MEASURES:

158 X 120 X 6.4 mm

Alongside the CB cups of 15 mm gives the height of the manufacturer. (21.4mm)

CUPS



CB12015T
158 x 120 x 15



CB10015T
158 x 100 x 15



CB08015N
158 x 80 x 15



CB07015N
158 x 70 x 15



CB06015N
158 x 60 x 15



CB05015N
158 x 50 x 15



CB04015N
158 x 40 x 15



CB03515N
158 x 35 x 15



CB03015N
158 x 30 x 15



A: 120 B: 15 C: 7

COMPACT



KB03-12021T
158 x 120 x 21.4



KB03-07021T
158 x 70 x 21.4



KB03-06021T
158 x 60 x 21.4



Underside



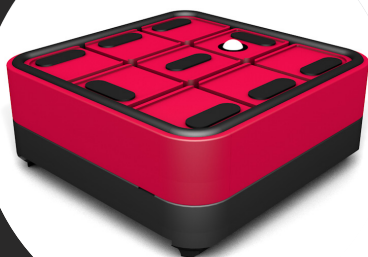
A: 120 B: 21.4 C: 7

*(Possibility of making different heights and shapes depending on the customer needs).

*SCM / Morbidelli is a registered and protected trademark. These products have been developed by Vacuum cnc specifically for machining centers of SCM / Morbidelli.



VACUUM CNC



VACUUM BLOCK BS05

FOR SCM AND MORBIDELLI

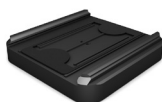
Vacuum block for different models of SCM and Mordibelli.

The plastic used has certain flexibility and memory, for what It won't stretch as the original ones, which it's fixation to the bar decreases by the use.

This model takes all the advantages of the **Vacuum-cnc** system.

BASES

BS05N



Standard set (Base + Cup): **145 X 145 X 50 mm**

(Different heights available)

MEASURES:

145 X 145 X 20 mm

Alongside the CC of 30mm gives the height of the manufacturer.
(50mm)

CUPS



CC14530T
145 x 145 x 30



CC10030T
145 x 100 x 30



CC08030N
145 x 80 x 30



CC07030N
145 x 70 x 30



CC06030N
145 x 60 x 30



CC05030N
145 x 50 x 30



CC04030N
145 x 40 x 30



CC03530N
145 x 35 x 30



A: 145 B: 30 C: 18

*(Possibility of making different heights and shapes depending on the customer needs)

*SCM / Morbidelli is a registered and protected trademark. These products have been developed by Vacuum cnc specifically for machining centers of SCM / Morbidelli.

CLAMPS

PR05N



MEASURES:

145 X 145 X 50 mm



VACUUM CNC



VACUUM BLOCK BS08

FOR SCM AND MORBIDELLI

The base it's screwed only once, from there we will have all the options from the Vacuum-cnc system. It incorporates a metal plaque of 3mm which gives a total rigidity when it comes to screwing. In difference with the original ones it allows us to work with narrow cups and realize every kind of tasks. In the compact model we'll keep the manufacturer's height.

Standard set (Base + Cup): 158 X 120 X 35.4 mm

(Different heights available)

BASES

BS08N



MEASURES:

158 X 120 X 20.4 mm

Alongside CB cups of 15mm gives the height of the manufacturer (35.4 mm)

CUPS



CB12015T

158 x 120 x 15



CB10015T

158 x 100 x 15



CB08015N

158 x 80 x 15



CB07015N

158 x 70 x 15



CB06015N

158 x 60 x 15



CB05015N

158 x 50 x 15



CB04015N

158 x 40 x 15



CB03515N

158 x 35 x 15



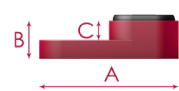
CB03015N

158 x 30 x 15



CB05015L

158 x 50 x 15



A: 120 B: 15 C: 7

COMPACT



KB08-12035T

158 x 120 x 35.4



KB08-07035N

158 x 70 x 35.4

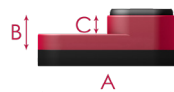


KB08-06035N

158 x 60 x 35.4



Cara Inferior



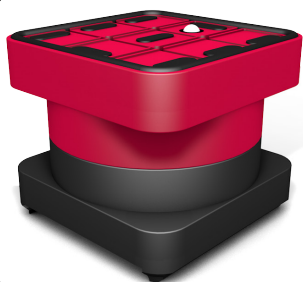
A: 120 B: 35 C: 7

*(Possibility of making different heights and shapes depending on the customer needs).

*SCM / Morbidelli is a registered and protected trademark. These products have been developed by Vacuum cnc specifically for machining centers of SCM / Morbidelli.



VACUUM CNC



VACUUM BLOCK BS14

FOR MORBIDELLI PLANET

Big and sturdy vacuum blocks, especial for machines with edgebander included.
The plastic used possesses certain flexibility and memory, for what it won't stretch as the original ones, which its fixation to the bar decreases by the use.

This model makes use of all the advantages from the **Vacuum-cnc** system.

Standard set (Base + Cup): **145 X 145 X 110 mm**

(Different heights available)

BASES

BS14N



MEASURES:

145 X 145 X 36 mm

Alongside CN cups of 74 mm gives the height of the manufacturer (110mm)

CUPS



CN14574T
145 x 145 x 74



CN10074T
145 x 100 x 74



CN08074N
145 x 80 x 74



CN07074N
145 x 70 x 74



CN06074N
145 x 60 x 74



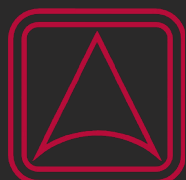
CN05074N
145 x 50 x 74



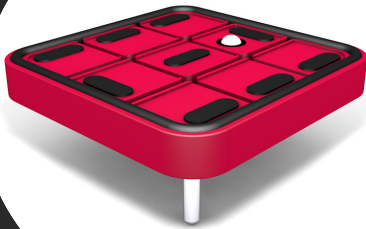
A: 145 B: 74 C: 54

*(Possibility of making different heights and shapes depending on the customer needs).

*SCM / Morbidelli is a registered and protected trademark. These products have been developed by Vacuum cnc specifically for machining centers of SCM / Morbidelli.



VACUUM CNC



VACUUM BLOCK KC24

FOR SCM AND MORBIDELLI

For this kind of vacuum cup, is simply an extra piece, which is added to the original, allowing to lift the height of work beneath the bars.

Thanks to it we can make passing mills and drills.

It's only made the compact model, the turn remains at 90 degrees.

COMPACT

Standard Measures: 145 X 145 X 20 mm

(Different heights available)

KC24-14520T



MEASURES:

145 X 145 X 20 mm

KC24-06020N



MEASURES:

145 X 60 X 20 mm

KC24-05020N



MEASURES:

145 X 50 X 20 mm

KC24-14520I

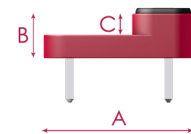


MEASURES:

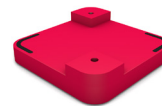
145 X 145 X 20 mm



Underside



A: 145 B: 20 C: 10



Underside

*(Possibility of making different heights, shapes and suction areas depending on the customer needs).

*SCM / Morbidelli is a registered and protected trademark. These products have been developed by Vacuum cnc specifically for machining centers of SCM / Morbidelli.



VACUUM CNC



VACUUM BLOCK BS28

FOR SCM AND MORBIDELLI

Vacuum block with option for the self-positioning of the consoles of SCM.
The plastic material of which are made protects the tools of being broken in case of crash.
This model takes advantage of the **Vacuum-cnc** system.

Standard set (Base + Cup): **145 X 145 X 50 / 75 mm**

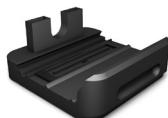
(Different heights available)

BASES

BS28N



BS28G



MEASURES:

145 X 145 X 20 mm

Alongside CC cups of 30mm and 55 mm gives the height of the Manufacturer (50mm and 75mm).

- BS28N Standard Base
- BS28S Base with self-positioning support

CUPS



CC14530T
145 x 145 x 30



CC10030T
145 x 100 x 30



CC08030N
145 x 80 x 30



CC07030N
145 x 70 x 30



A: 145 B: 30 C: 18



CC06030N
145 x 60 x 30



CC05030N
145 x 50 x 30



CC04030N
145 x 40 x 30



CC03530N
145 x 35 x 30



CC14555T
145 x 145 x 55



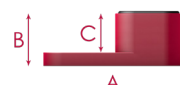
CC10055T
145 x 100 x 55



CC08055N
145 x 80 x 55



CC07055N
145 x 70 x 55



A: 145 B: 55 C: 40



CC06055N
145 x 60 x 55



CC05055N
145 x 50 x 55



CC04055N
145 x 40 x 55



CC03555N
145 x 35 x 55

*(Possibility of making different heights and shapes depending on the customer needs).

*SCM / Morbidelli is a registered and protected trademark. These products have been developed by Vacuum cnc specifically for machining centers of SCM / Morbidelli.

CLAMPS

PR28N



MEASURES:

145 X 145 X 50 / 75 mm



VACUUM BLOCK BS13

FOR CONSOLES OF 1 CIRCUIT HOMAG, MASTERWOOD, FELDER, WEEKE AND OTHERS

Vacuum block of one circuit with numerous options of suction areas.
It offers a huge grip to the bars thanks to our patented rubber.
Improved triggers that guarantee a great durability.
This model takes advantage of all the **Vacuum-cnc** system.

BASES

BS13N



Standard set (Base + Cup): **120 X 158 X 50 mm**

(Different heights available)

MEASURES:

120 X 158 X 30 mm

Alongside CV or CB cups of 20mm gives a height of the manufacturer (50 mm)

CUPS



CV15820T
120 x 158 x 20



CV10020T
120 x 100 x 20



CV08020N
120 x 80 x 20



CV07020N
120 x 70 x 20



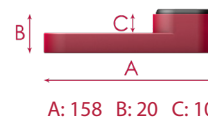
CV06020N
120 x 60 x 20



CV05020N
120 x 50 x 20



CV04020N
120 x 40 x 20



CB12020T
158 x 120 x 20



CB10020T
158 x 100 x 20



CB08020N
158 x 80 x 20



CB07020N
158 x 70 x 20



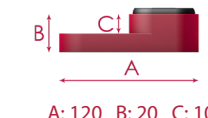
CB06020N
158 x 60 x 20



CB05020N
158 x 50 x 20



CB04020N
158 x 40 x 20

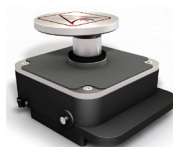


*(Possibility of making different heights and shapes depending on the customer needs).

*Homag, Masterwood y Felder is a registered and protected trademark. These products have been developed by Vacuum cnc specifically for machining centers of Homag, Masterwood, Felder and more.

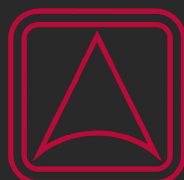
CLAMPS

PR13N



MEASURES:

158 X 120 X 50 mm



VACUUM CNC



VACUUM BLOCK BS13-40

FOR CONSOLES OF 1 CIRCUIT HOMAG, MASTERWOOD, FELDER, WEEKE AND OTHERS

Vacuum block of one circuit with numerous options of suction areas.
It offers a huge grip to the bars thanks to our patented rubber.
Improved triggers that guarantee a great durability.
This model takes advantage of all the **Vacuum-cnc** system.

BASES

BS13N-40



Standard set (Base + Cup): **120 X 158 X 100 mm**

(Different heights available)

MEASURES:

120 X 158 X 40 mm

Alongside CM cups of 60mm gives a height of 100 mm.

CUPS



CM15860T
120 x 158 x 60



CM12060T
120 x 120 x 60



CM10060T
120 x 100 x 60



CM08060N
120 x 80 x 60



CM07060N
120 x 70 x 60



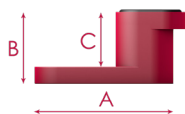
CM06060N
120 x 60 x 60



CM05060N
120 x 50 x 60



CM04060N
120 x 40 x 60



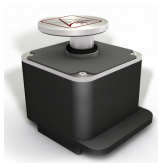
A: 145 B: 60 C: 45

*(Possibility of making different heights and shapes depending on the customer needs).

*Homag, Masterwood y Felder is a registered and protected trademark. These products have been developed by Vacuum cnc specifically for machining centers of Homag, Masterwood, Felder and more.

CLAMPS

PR11N



MEASURES:

158 X 120 X 100 mm



VACUUM CNC



VACUUM BLOCK BS13-51

FOR CONSOLES OF 1 CIRCUIT HOMAG, MASTERWOOD, FELDER, WEEKE AND OTHERS

Vacuum block of one circuit with numerous options of suction areas.
It offers a huge grip to the bars thanks to our patented rubber.
Improved triggers that guarantee a great durability.
This model takes advantage of all the **Vacuum-cnc** system.

Standard set (Base + Cup): **120 X 158 X 125 mm**

(Different heights available)

BASES

BS13N-51



MEASURES:

120 X 158 X 51 mm

Alongside CM cups of 74 mm gives a height of 125 mm.

CUPS



CM15874T
120 x 158 x 74



CM12074T
120 x 120 x 74



CM10074T
120 x 100 x 74



CM08074N
120 x 80 x 74



CM07074N
120 x 70 x 74



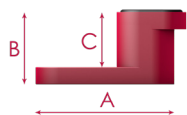
CM06074N
120 x 60 x 74



CM05074N
120 x 50 x 74



CM04074N
120 x 40 x 74



A: 145 B: 74 C: 59

*(Possibility of making different heights and shapes depending on the customer needs).

*Homag, Masterwood y Felder is a registered and protected trademark. These products have been developed by Vacuum cnc specifically for machining centers of Homag, Masterwood, Felder and more.



VACUUM CNC



VACUUM BLOCK BS17

FOR CONSOLES OF 2 CIRCUITS HOMAG, MASTERWOOD, FELDER, WEEKE AND MORE

Vacuum cup of double circuit very versatile, offers a lot of alternatives of both heights and suction areas.

It possesses a great grip to the bars thanks to its patented rubber by **Vacuum-cnc**.

This model takes advantage of all the **Vacuum-cnc** system.

Standard set (Base + Cup): 120 X 158 X 50 / 75 / 100 / 125 mm

(Different heights available)

BASES

BS17N-40



MEASURES:

120 X 158 X 40 mm
Alongside the CM cups of 60mm gives the height of the manufacturer (100mm).

BS17N-51



MEASURES:

120 X 158 X 51 mm
Alongside the CM cups of 74mm gives the height of the manufacturer (125mm).

BS17N-25



MEASURES:

120 X 158 X 25 mm
Alongside the CB or CV cups of 25 mm gives the height of the manufacturer (50 mm and 75mm).

CUPS



CM15860T
120 x 158 x 60



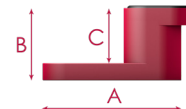
CM12060T
120 x 120 x 60



CM10060T
120 x 100 x 60



CM08060N
120 x 80 x 60



A: 145 B: 60 C: 45



CM07060N
120 x 70 x 60



CM06060N
120 x 60 x 60



CM05060N
120 x 50 x 60



CM04060N
120 x 40 x 60



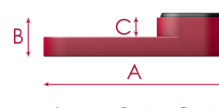
CV15825T
120 x 158 x 25



CV07025N
120 x 70 x 25



CV06025N
120 x 60 x 25



A: 158 B: 25 C: 13



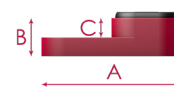
CB12025T
158 x 120 x 25



CB07025N
158 x 70 x 25



CB06025N
158 x 60 x 25



A: 120 B: 25 C: 13

*(Possibility of making different heights and shapes depending on the customer needs).

*Homag, Masterwood y Felder is a registered and protected trademark. These products have been developed by Vacuum cnc specifically for machining centers of Homag, Masterwood, Felder and more..

CLAMPS

PR17N



MEASURES:

158 X 120 X 100 / 50 mm



VACUUM BLOCK BS18

FOR CONSOLES OF 2 CIRCUITS HOMAG, MASTERWOOD, FELDER, WEEKE AND MORE

Vacuum cup of double circuit very versatile, that offers a wide range of alternatives both of height and suction. It possesses a great grip to the bars thanks to its patented rubber by **Vacuum cnc**. The difference with the BS17 is that the bottom rubber is cut 20mm respect to the base length, what is necessary for certain models of consoles.

Standard set (Base + Cup): 120 X 158 X 50 / 75 / 100 / 125 mm

(Different heights available)

BASES

BS18N-40



MEASURES:

120 X 158 X 40 mm
Alongside the CM cups of 60mm gives the height of the manufacturer (100 mm).

BS18N-51



MEASURES:

120 X 158 X 51 mm
Alongside the CM cups of 74mm gives the height of the manufacturer (125mm).

BS18N-25



MEASURES:

120 X 158 X 25 mm
Alongside the CB or CV cups of 25 mm gives the height of the manufacturer (50 mm and 75mm).

CUPS



CM15860T
120 x 158 x 60



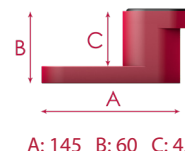
CM12060T
120 x 120 x 60



CM10060T
120 x 100 x 60



CM08060N
120 x 80 x 60



A: 145 B: 60 C: 45



CM07060N
120 x 70 x 60



CM06060N
120 x 60 x 60



CM05060N
120 x 50 x 60



CM04060N
120 x 40 x 60



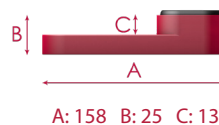
CV15825T
120 x 158 x 25



CV07025N
120 x 70 x 25



CV06025N
120 x 60 x 25



A: 158 B: 25 C: 13



CB12025T
158 x 120 x 25



CB07025N
158 x 70 x 25



CB06025N
158 x 60 x 25



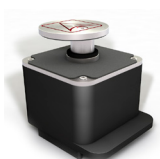
A: 120 B: 25 C: 13

*(Possibility of making different heights and shapes depending on the customer needs).

*Homag, Masterwood y Felder is a registered and protected trademark. These products have been developed by Vacuum cnc specifically for machining centers of Homag, Masterwood, Felder and more.

CLAMPS

PR18N



MEASURES:

158 X 120 X 100 / 50 mm



VACUUM BLOCK BS23

MAGNETIC SUBJECTION FOR METALIC TABLE

Vacuum block for metallic flat table, with a magnet at the bottom to fix the block to the bar when the vacuum is off.

It possesses a huge grip to the bars thanks to their patented rubber by **Vacuum cnc**. This model takes advantage of all the **Vacuum-cnc** system goods.

BASES

Standard set (Base + Cup): 120 X 120 X 52 mm

(Different heights available)

BS23N



MEASURES:

120 X 120 X 22 mm

Alongside the CA cups of 30 mm gives the height of the manufacturer (52 mm)

CUPS



CA12030T
120 x 120 x 30



CA10030T
120 x 100 x 30



CA08030N
120 x 80 x 30



CA07030N
120 x 70 x 30



CA06030N
120 x 60 x 30



CA05030N
120 x 50 x 30



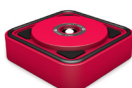
CA04030N
120 x 40 x 30



CA03530N
120 x 35 x 30



CA03030N
120 x 30 x 30

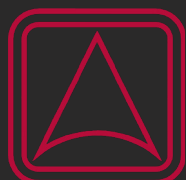


CA12030P
120 x 120 x 30



A: 120 B: 30 C: 18

*(Possibility of making different heights and shapes depending on the customer needs).



VACUUM CNC



VACUUM BLOCK BS16

FOR NESTING OR GRID TABLES

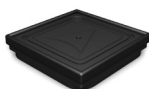
System of Vacuum cup for grid tables, We can distinguish the model N and the model H depending on the depth of the canal.

The inferior rubber is reversible, so we can double the length of its useful life.

The lifting board system (with cup CA12030P), initially thought for this model, is one of our main products: It allows you to load and unload the boards easily, with no need of external help and without having damaged or moved none the rubbers of the vacuum block.

BASES

BS16N



Standard set (Base + Cup): 120 X 120 X 50 / 75 mm

MEASURES:

120 X 120 X 20 mm

Depending on the client's needs It can be possible placing the CA cups of 20 mm Or 30 mm.

The bases are distinguished by the depth of the canal:

- BS16H: 7 mm (normally for Homag, Felder, Masterwood, etc).
- BS16N: 6 mm (normally for models of table SCM, Morbidelli, etc).

CUPS



CA12030T
120 x 120 x 30



CA10030T
120 x 100 x 30



CA08030N
120 x 80 x 30



CA07030N
120 x 70 x 30



CA06030N
120 x 60 x 30



CA05030N
120 x 50 x 30



CA04030N
120 x 40 x 30



CA03530N
120 x 35 x 30



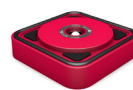
CA03030N
120 x 30 x 30



CA05030D
120 x 50 x 30



CA05030L
120 x 50 x 30

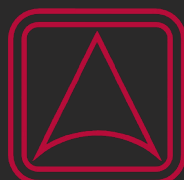


CA12030P
120 x 120 x 30



A: 120 B: 30 C: 18

*(Possibility of making different heights and shapes depending on the customer needs).



VACUUM CNC



VACUUM BLOCK BS16

FOR NESTING OR GRID TABLES

System of Vacuum cup for grid tables, We can distinguish the model N and the model H depending on the depth of the canal.

The inferior rubber is reversible, so we can double the length of its useful life.

The lifting board system, initially thought for this model, is one of our main products: It allows you to load and unload the boards easily, with no need of external help and without having damaged or moved none the rubbers of the vacuum block.

COMPACT



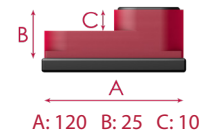
KA16-12025T
120 x 120 x 25



KA16-07025N
120 x 70 x 25



KA16-06025N
120 x 60 x 25



A: 120 B: 25 C: 10



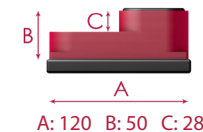
KA16-12050T
120 x 120 x 50



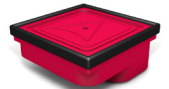
KA16-07050N
120 x 70 x 50



KA16-06050N
120 x 60 x 50



A: 120 B: 50 C: 28



Underside

LIFTERS



EA12010N
120 x 120 x 10



EA12020N
120 x 120 x 20



EA12030N
120 x 120 x 30

CLAMPS

PR16N



MEASURES:

120 X 120 X 50 mm



VACUUM CNC



VACUUM BLOCK KG10

FOR BIESSE

Vacuum cup suitable with biesse's consoles to hitch with circular ring.

These models are sorted with the bottom ring apart, as many customers prefer to reuse which they already have.

Standard Measures: 132 X 132 X 29 / 48 mm

(Different heights available)

COMPACT



KG10-13229T
132 x 132 x 29



KG10-10029T
132 x 100 x 29



KG10-08029N
132 x 80 x 29



KG10-07029N
132 x 70 x 29



Underside



KG10-06029N
132 x 60 x 29



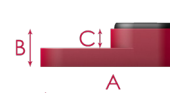
KG10-05029N
132 x 50 x 29



KG10-04029N
132 x 40 x 29



KG10-03529N
132 x 35 x 29



A: 132 B: 29 C: 12



KG10-13248T
132 x 132 x 48



KG10-10048T
132 x 100 x 48



KG10-08048N
132 x 80 x 48



KG10-07048N
132 x 70 x 48



KG10-06048N
132 x 60 x 48



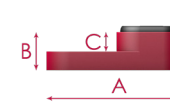
KG10-05048N
132 x 50 x 48



KG10-04048N
132 x 40 x 48



KG10-03548N
132 x 35 x 48



A: 132 B: 48 C: 28



Bottom Ring for Biesse

*Biesse is a registered and protected trademark. These products have been developed by Vacuum cnc specifically for machining centers CNC of Biesse.

CLAMPS

PR10N



MEASURES:

132 X 132 X 29 / 48 / 74 mm



VACUUM CNC



VACUUM BLOCK KF12

FOR BIESSE

Vacuum cup model suitable with Biesse's consoles to hitch with circular crown.
This crown is an independent article as a lot of clients prefer to reuse which they already have.

Standard Measures: 132 X 145 X 29 / 48 mm

(Different heights available)

COMPACT



KF12-14529T
132 x 145 x 29



KF12-10029T
132 x 100 x 29



KF12-08029N
132 x 80 x 29



KF12-07029N
132 x 70 x 29



Underside



KF12-06029N
132 x 60 x 29



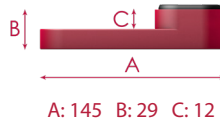
KF12-05029N
132 x 50 x 29



KF12-04029N
132 x 40 x 29



KF12-03529N
132 x 35 x 29



KF12-14548T
132 x 145 x 48



KF12-10048T
132 x 100 x 48



KF12-08048N
132 x 80 x 48



KF12-07048N
132 x 70 x 48



KF12-06048N
132 x 60 x 48



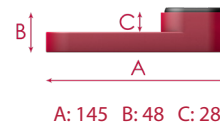
KF12-05048N
132 x 50 x 48



KF12-04048N
132 x 40 x 48



KF12-03548N
132 x 35 x 48

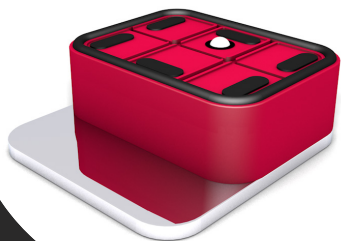


Bottom Ring for Biesse

*Biesse is a registered and protected trademark. These products have been developed by Vacuum cnc specifically for machining centers CNC of Biesse.



VACUUM CNC



VACUUM BLOCK KF12

FOR BIESSE

Vacuum cup model suitable with Biesse's consoles to hitch with circular crown.
This crown is an independent article as a lot of clients prefer to reuse which they already have.
The same happens with the aluminium plate at the bottom, which is also sold separately.
For these models, in case you want to reuse the original plate, the smallest model that exists is 55 mm width.
With the **Vacuum cnc** aluminium plate we can make them as far as 35 mm width.

Standard Measures: 132 X 145 X 29 / 48 / 74 mm

(Different heights available)

COMPACT



KF12-14529T
132 x 145 x 29



KF12-10029T
132 x 100 x 29



KF12-08029N
132 x 80 x 29



KF12-07029N
132 x 70 x 29



KF12-06029N
132 x 60 x 29



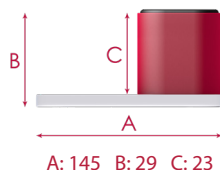
KF12-05029N
132 x 50 x 29



KF12-04029N
132 x 40 x 29



KF12-03529N
132 x 35 x 29



KF12-14548T
132 x 145 x 74



KF12-10048T
132 x 100 x 74



KF12-08048N
132 x 80 x 74



KF12-07048N
132 x 70 x 74



KF12-06048N
132 x 60 x 74



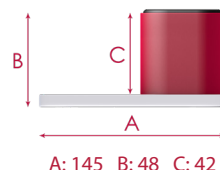
KF12-05048N
132 x 50 x 74



KF12-04048N
132 x 40 x 74



KF12-03548N
132 x 35 x 74



VACUUM CNC



VACUUM BLOCK KF12

FOR BIESSE

Vacuum cup model suitable with Biesse's consoles to hitch with circular crown.
This crown is an independent article as a lot of clients prefer to reuse which they already have.
The same happens with the aluminium plate at the bottom, which is also sold separately.
For these models, in case you want to reuse the original plate, the smallest model that exists is 55 mm width.
With the **Vacuum cnc** aluminium plate we can make them as far as 35 mm width.

Standard Measures: 132 X 145 X 29 / 48 / 74 mm

(Different heights available)

COMPACT



KF12-14574T
132 x 145 x 74



KF12-10074T
132 x 100 x 74



KF12-08074N
132 x 80 x 74



KF12-07074N
132 x 70 x 74



KF12-06074N
132 x 60 x 74



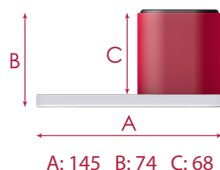
KF12-05074N
132 x 50 x 74



KF12-04074N
132 x 40 x 74



KF12-03574N
132 x 35 x 74



Bottom Crown
Biesse

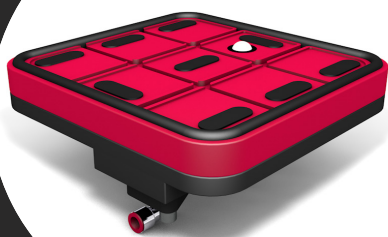


Aluminium Plate

*Biesse is a registered and protected trademark. These products have been developed by Vacuum-CNC specifically for machining centers CNC of Biesse.



VACUUM CNC



VACUUM BLOCK BS15

FOR BIESSE

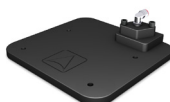
In this model we screw the base in which normally the vacuum cup gets screwed. From there, with just a click we can modify the suction surface just exchanging the cups. This vacuum block takes advantage of all the improvements of the **Vacuum-cnc** system. Although exist a compact model with different suction surfaces.

BASES

Standard set (Base + Cup): **160 X 150 X 24 mm**

(Different heights available)

BS15N



MEASURES:

160 X 150 X 9 mm

Alongside CL cups of 15mm gives the height of the manufacturer (24 mm)

CUPS



CL15015T
160 x 150 x 15



CL10015T
160 x 100 x 15



CL08015N
160 x 80 x 15



CL07015N
160 x 70 x 15



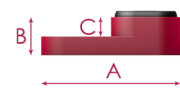
CL06015N
160 x 60 x 15



CL05015N
160 x 50 x 15



CL04015N
160 x 40 x 15



A: 150 B: 15 C: 7

COMPACT



KL15-15024T
160 x 150 x 24



Underside

*(Possibility of making different heights and shapes depending on the customer needs).

*Biesse is a registered and protected trademark. These products have been developed by Vacuum-CNC specifically for machining centers CNC of Biesse.



VACUUM CNC



VACUUM BLOCK BS02

FOR SAOM, RIERGE, COSMEC...

Vacuum cup of one circuit with numerous options of suction areas.
It possesses a great grip to the bars thanks to its patented rubber by **Vacuum cnc**.
Triggers improved that guarantee a great duality.
This model takes advantage of all of the **Vacuum-cnc** system.
This model also exists in compact system.

Standard set (Base + Cup): **120 X 120 X 50 mm**

(Different heights available)

BASES

BS02N



MEASURES:

120 X 120 X 30 mm

Alongside the CA cups of 20 mm gives the height of the manufacturer (50 mm).
There is an option of maintaining the original height with the lifting board included in the compact model.

CUPS



CA12020T
120 x 120 x 20



CA10020T
120 x 100 x 20



CA08020N
120 x 80 x 20



CA07020N
120 x 70 x 20



CA06020N
120 x 60 x 20



CA05020N
120 x 50 x 20



CA04020N
120 x 40 x 20



CA03520N
120 x 35 x 20



CA03020N
120 x 30 x 20



A: 120 B: 20 C: 10

*(Possibility of making different heights and shapes depending on the customer needs).

*Saom, Rierge y Cosmec is a registered and protected trademark. These products have been developed by VacuumCNC specifically for machining centers of Saom, Rierge and Cosmec.

CLAMPS

PR02N



MEASURES:

120 X 120 X 50 mm



VACUUM CNC



VACUUM BLOCK KP04

FOR NIPUER

Vacuum cup specific for machines of milling doors. As it is made in plastic it doesn't affect the milling machine in case of crashing with the vacuum cup. All of them includes a touch valve to not lose the vacuum even if it is not being used.

COMPACT

Standard Models: 150 X 120 / 70 / 50 X 55 mm

(Different heights available)

KP04-12055T



MEASURES:

150 X 120 X 55 mm

KP04-07055N



MEASURES:

150 X 70 X 55 mm

KP04-05055N



MEASURES:

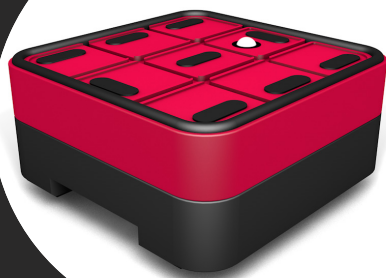
150 X 50 X 55 mm

*(Possibility of making different heights, shapes and suction areas depending on the customer needs).

*Nipuer is a registered and protected trademark. These products have been developed by Vacuum-CNC specifically for machining centers of Nipuer.



VACUUM CNC



VACUUM BLOCK BS07

FOR BUSELLATO

System that improves the fastening of the original blocks with a huge difference, thanks to have a bigger suction surface and our system.
It needs to adapt (screw) the original piston that fixes the block to the bars to our base, once it's done there's no reason to unscrew them again.

Standard set (Base + Cup): **155 X 155 X 55 mm**

(Different heights available)

BASES

BS07R



MEASURES:

155 X 155 X 25 mm

Alongside the CD of 30 mm gives the height of the manufacturer (55mm)

This model need the original pneumatic piston to the subjection to the bar.

CUPS



CD15530T

155 x 155 x 30



CD10030T

155 x 100 x 30



CD08030N

155 x 80 x 30



CD07030N

155 x 70 x 30



CD06030N

155 x 60 x 30



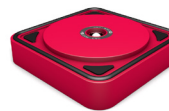
CD05030N

155 x 50 x 30



CD04030N

155 x 40 x 30



CD15530P

155 x 155 x 30



A: 155 B: 30 C: 18

*(Possibility of making different heights and shapes depending on the customer needs).

*Busellato is a registered and protected trademark. These products have been developed by Vacuum cnc specifically for machining centers of Casadei Busellato.



VACUUM CNC



VACUUM BLOCK BS20

FOR EGURKO Y RIERGE

Vacuum cup model equivalent to the Egurko, Bermaq, Rierge, etc.

We offer two options:

- The **Vacuum-cnc** system, divided in two pieces and with the characteristics of the brand, speed, efficacy and saving. It's minimum height is 19mm.
- The compact system, in one piece but improving the benefits of grip for an optimum milling.

Standard set (Base + Cup): **158 X 120 X 30 / 48 mm**

(Different heights available)

BASES

BS20N



MEASURES:

158 X 120 X 10 mm

Alongside the CB cups of 20 mm gives the height of (30 mm).

There can be different official measures

BS20N18



Alongside the CB cups of 20 mm gives the height of (38 mm).

There can be different official measures.

CUPS



CB15820T
158 x 120 x 20



CB10020T
158 x 100 x 20



CB08020N
158 x 80 x 20



CB07020N
158 x 70 x 20



CB06020N
158 x 60 x 20



CB05020N
158 x 50 x 20



CB04020N
158 x 40 x 20



CB03520N
158 x 35 x 20



CB03020N
158 x 30 x 20



A: 120 B: 20 C: 10

COMPACT



KB20-12019T
158 x 120 x 19



KB20-06019N
158 x 100 x 19



KB20-05019N
158 x 80 x 19



Underside



A: 120 B: 19 C: 7

*(Possibility of making different heights and shapes depending on the customer needs).

*Egurko y Rierge is a registered and protected trademark. These products have been developed by Vacuum cnc specifically for machining centers of Egurko and Rierge.



VACUUM CNC



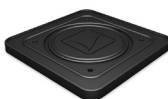
VACUUM BLOCK BS25

FOR BUSELLATO

Once the base is screwed on its place, we forget about screwing and unscrewing again. We place the more convenient cup with a simple click being able of changing it very quick. It has all the advantages of the **Vacuum-cnc** system.

BASES

BS25N



Standard set (Base + Cup): **155 X 155 X 35 mm**

(Different heights available)

MEASURES:

155 X 155 X 12 mm

Alongside the CD/R cups of 23mm gives the height of the manufacturer (35mm).

CUPS



CD15523R
155 x 155 x 23



CD10023R
155 x 100 x 23



CD08023R
155 x 80 x 23



CD07023R
155 x 70 x 23



CD06023R
155 x 60 x 23



CD05023R
155 x 50 x 23



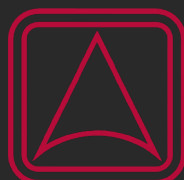
CD04023R
155 x 40 x 23



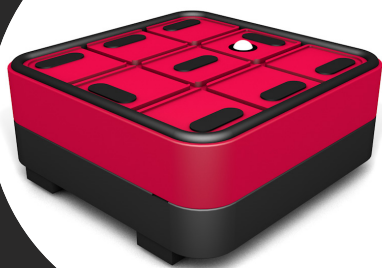
A: 155 B: 23 C: 12

*(Possibility of making different heights and shapes depending on the customer needs).

*Busellato is a registered and protected trademark. These products have been developed by Vacuum cnc specifically for machining centers of Casadei Busellato.



VACUUM CNC



VENTOSA BS26

FOR BUSELLATO

It needs the original piston to screw it at the bottom of our base and fix the block to the bar while working, we won't have to realize this task again.
Then, place the more convenient cup with a simple click, being able to change it very quick.
It improves the fixing of the board to mill it as it increases the suction area and thanks to the rest of advantages of the **Vacuum-cnc** system.

Standard set (Base + Cup): **155 X 155 X 55 mm**

(Different heights available)

BASES

BS26N



MEASURES:

155 X 155 X 25 mm

Alongside the CD cups of 30mm gives the height of the manufacturer (55mm).

CUPS



CD15530T
155 x 155 x 30



CD10030T
155 x 100 x 30



CD08030N
155 x 80 x 30



CD07030N
155 x 70 x 30



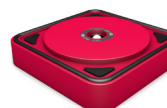
CD06030N
155 x 60 x 30



CD05030N
155 x 50 x 30



CD04030N
155 x 40 x 30



CD155030P
155 x 155 x 30



A: 155 B: 30 C: 18

*(Possibility of making different heights and shapes depending on the customer needs).

*Busellato is a registered and protected trademark. These products have been developed by Vacuum cnc specifically for machining centers of Casadei Busellato.



VACUUM CNC



VACUUM BLOCK BS27

FOR FLAT TABLES

Vacuum cup for flat table, very versatile thanks to the infinite possibilities of suction surfaces that give our system of changing cups.

It has a great grip to the bars thanks to its patented rubber by **Vacuum cnc**.

This model takes advantage of all the improvements of the **Vacuum-cnc** system.

The plastic material of which it is made protects the tools of braking in case of an accident. Valid for milling all kinds of materials (derivatives of plastic and wood, crystal etc.)

Standard set (Base + Cup): 132 X 132 X 50 / 60 / 100 mm

(Different heights available)

BASES

BS27N-30



MEASURES:

132 X 132 X 30 mm

Alongside the CG cups of 20 mm, 30 mm and 70 mm gives the height of the manufacturer (50, 60 and 100 mm).

CUPS



CG13230T
132 x 132 x 30



CG10030T
132 x 100 x 30



CG08030N
132 x 80 x 30



CG07030N
132 x 70 x 30



CG06030N
132 x 60 x 30



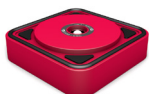
CG05030N
132 x 50 x 30



CG04030N
132 x 40 x 30



CG03530N
132 x 35 x 30



CG13230P
132 x 132 x 30



A: 132 B: 30 C: 18



CG13270T
132 x 132 x 70



CG10070T
132 x 100 x 70



CG08070N
132 x 80 x 70



CG07070N
132 x 70 x 70



CG06070N
132 x 60 x 70



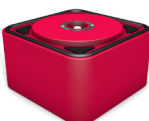
CG05070N
132 x 50 x 70



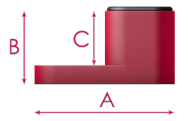
CG04070N
132 x 40 x 70



CG03570N
132 x 35 x 70



CG13270P
132 x 132 x 70



A: 132 B: 70 C: 50

*(Possibility of making different heights and shapes depending on the customer needs).



VACUUM CNC



VACUUM BLOCK BS27

FOR FLAT TABLES

Vacuum cup for flat table, very versatile thanks to the infinite possibilities of suction surfaces that give our system of changing cups.

It has a great grip to the bars thanks to its patented rubber by **Vacuum cnc**.

This model takes advantage of all the improvements of the **Vacuum-cnc** system.

The plastic material of which it is made protects the tools of braking in case of an accident. Valid for milling all kinds of materials (derivatives of plastic and wood, crystal etc.)

CLAMPS

PR27N



MEASURES:

132 X 132 X 50 mm



VACUUM CNC



MECHANICAL CLAMPS

SPECIFIC MODELS FOR EACH MACHINE

Vertical mechanical clamps activated by vacuum.

They turn on when activating the vacuum in the machine and they position as any other kind of vacuum cup, without hose connection or screws unless is absolutely necessary.

Clamping forces of up to 700 n.

All of our vertical presses include two elevator caps of 25 and 50 mm for being able of lifting the height, until a recommended maximum of 100 mm, allowing us to realize all kind of tasks.

MODELS

The available heights are according with the vacuum cup model.

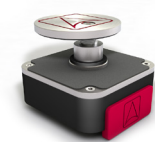
PR01N



MEASURES:

120 X 120 X 32.7 mm

PR02N



MEASURES:

120 X 120 X 50 mm

PR05N



MEASURES:

145 X 145 X 50 mm

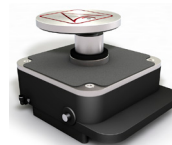
PR10N



MEASURES:

132 X 132 X 29 / 48 / 74 mm

PR13N



MEASURES:

158 X 120 X 50 / 100 / 125 mm

PR16N



MEASURES:

120 X 120 X 50 mm

PR17N



MEASURES:

158 X 120 X 100 / 50 mm

PR27N



MEASURES:

132 X 132 X 50 mm

PR28N



MEASURES:

145 X 145 X 50 / 75 mm

*(Possibility of making different heights and shapes depending on the customer needs)



VACUUM CNC

OTHER FEATURES

COMPATIBLE WITH ALL OUR BASES

They are coupled to the different bases of each machine giving us all the possibilities.



MODELS

PNEUMATIC HORIZONTAL CLAMP



MEASURES:

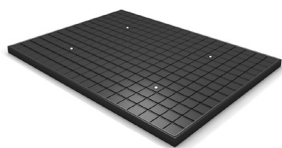
145 X 320 X 30 mm

Reference: PH01N

Opening distance: 100mm

Path: Until 150mm

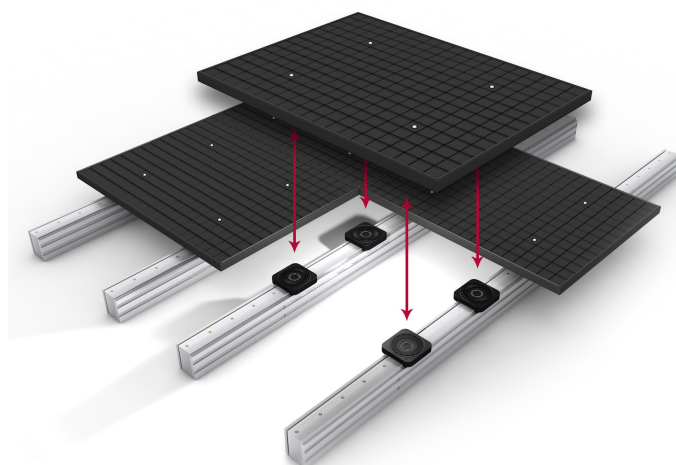
NESTING MODULE



MEASURES:

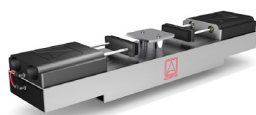
680 X 910 X 30 mm

Reference: MMN



*(Possibility of making different heights, shapes and suction areas depending on the customer needs).

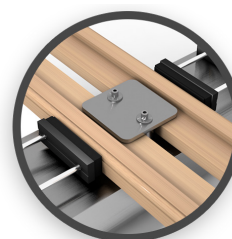
DOOR JAMB CLAMP



MEASURES:

145 X 320 X 30 mm

Reference: PRCS1



VACUUM CNC