

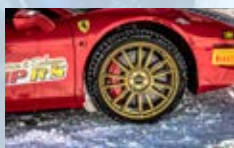


## RAPID FIT SCREW-IN ICE STUDS



*Bestgrip presents its patented screw-in ice stud with a fast and easy installation and removal. An innovative product designed from a simple idea that will revolutionize and simplify any difficult situation underfoot.*

### TECHNICAL SPECIFICATIONS OF STUDS



Bestgrip studs have the ability to be installed into any new or used tire, track or shoe whether or not these have stud holes or locations. Normal, off road or snow tires can be used, if ground conditions become slippery and endanger personal safety it is not necessary to use specialistst to install **Bestgrip** studs.



This can be done by the consumer with simple, fast and economical equipment. Tires or shoes will immediately have an enhanced level of safety and security. The studs may be removed

equally easily when not required and reinstalled again in the future. It is possible to choose and vary the number of studs that are inserted into the tire, or shoe to suit specific needs and applications.



**All Bestgrip's studs have a durable tungsten tip providing maximum grip on slippery ground (mud, snow, ice, rocks, grass, roots, etc..)**

**BESTGRIP WAS AWARDED IN 2004 AS TECHNOLOGICAL INNOVATION BY THE CHAMBER OF COMMERCE OF BERGAMO**

Bestgrip S.r.l - Via Cà dell'Agro, 98 - 24024 Gandino (BG) ITALY  
info@best-grip.com - www.best-grip.com - +39 035 745678

### CHOICE OF THE THREADED STUD

The protrusion of the stud from the tire, its prominence, controls where it can be normally used (competitions, off road, road, etc.). We recommend using studs with less prominence in areas governed by Road Regulations, while on private areas studs of a greater prominence can be used. In either case, always use all of the available rubber in the thread available where possible to provide the best support and retention of the studs. Add the depth of the thread to the carcass cover thickness as follows:



For road tires add 2mm, for snow tires or cleated threads add 3mm. in tires for trucks up to 35 quintals, add 5mm, in the tires for trucks over 35 quintals, add 7mm. The total of the thread and the carcass cover is the available rubber for the stud to penetrate (see table).



### FOR THE BEST PERFORMANCE

Do not use with soft tires such as those used in competition since they tend to disintegrate and loose the studs. There is no need to remove studs that are already installed in a traditional studded tire but you can replace them as and when needed with Bestgrip's studs. You can put the Bestgrip studs into the manufacturer's provided hole (and that took the studs above) or between the thread slots, but the optimal situation in each condition is done by mounting the studs in full, in the recommended way, it isn't necessary to use glues.

### INSTRUCTIONS TO GLUE STUDS

**OPTIONAL REQUIRED ONLY FOR COMPETITION**

For more information visit our website

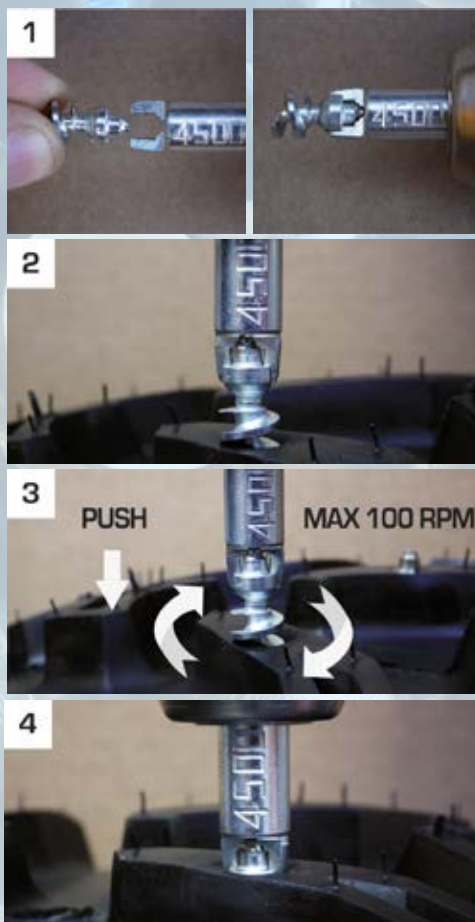
### DISPOSITION OF THE STUDS ON THE TIRES

1. Install the studs in a regular pattern around the circumference of the tire.
2. Do not install studs in a line but in a regular manner around the complete circumference of the tire.
3. If the tire is also used on roads without snow or ice it is better to install studs along the shoulders of the front tires to maintain steering



**NO YES**

### STUD INSTALLATION



1. Place the head of the stud in the head of the installation tool

2. Place the tip of the screwed end of the stud on the surface of the tire in the marked location.

3. Applying steady force at right angles to the tire screw very slowly into place.

4. Tighten only until the head of the stud touches the surface of the tire.

### IMPORTANT

- 1) If the stud is tightened too much by mistake leave it in place and not unscrew it to get the correct position
- 2) Check the studs every 1000 km / 500 miles and if necessary retighten them

- 3) Do not continue to tighten after the head of the stud touches the surface of the tire / shoe otherwise the screwed portion of the stud will rip out the rubber seat of the nail. The nail will be then not work properly, will bend and tend to come free
- 4) Do not fit snow chains id the studs protrude more than 3mm from the tire



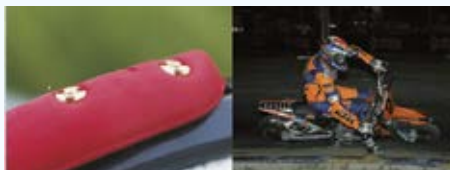
### EQUINE APPLICATION



(for assembly instruction visit our website)

In the equine world technology also continues apace and several specialised companies have produced synthetic alternatives to conventional iron horseshoes. Although these provide a hard wearing shoe well able to support the weight of the horse they can also become dangerous when conditions become slippery. **Bestgrip** now has a solution to this problem with their range of screw-in tungsten carbide studs. The studs are outstanding in snow and ice as well as on any ground made slippery by rain or surface water and give both horse and rider supreme confidence.

### ANTI-WEAR SHOES / SUPERMOTARD BOOTS



In this case the studs are used not to prevent slipping but the exact opposite, to provide protection when sliding supermotard boot on the asphalt track. It prevents boot wear along the sole and does not damage the asphalt track surface.

**RECOMMENDED METHOD OF USE:** Run the boot in to get the required inclination of the sole, and then mount the studs. The number and the position will be decided by you to get the right balance between the wear rate and sensitivity of the sole of the boot. The boots can be customized by you to get the best balance.

### NON SLIP SHOES OR BOOTS FOR WORK OR RECREATION

There are a multitude of situations where we need to walk, jog or work in slippery conditions that are a result of rain, mud, snow and ice for example. These difficult conditions can affect the footing of both an athlete, a mountaineer, or





of a hiker, or a fisherman to someone who simply has to work on a day to day basis in these conditions. Now there is a solution to solve all these problems that is simple, robust and effective.



Some examples of Footwear soles. For complete list see table and website





<div></div> <div>NON-OBLIGATORY EXAMPLES FOR USE OF BESTGRIP STUDS</div>	1000	1100	1200	1300	1350	1400	1410	1500	1510	1600	1610	1700	1700S	TEMPERED 1740	1750	1800	TEMPERED 1800R	TEMPERED 1800S	1900	TEMPERED 1910	TEMPERED 1911-3	TEMPERED 1912-3	TEMPERED 1912-J	3000A	3000B	1605	3300	F1									
INTERLOCKING KEY ADAPTER 1/4" Hexagonal drive use screw/ handle for installation and removal	4000	3200	4200	4300	4400	4400	4910	4500	4910	4600	3200	4700	4700S	4740	4700	4800	4800	4700S	4500	4910	4911-3	4912-3	4912	3200	3200	3200	3500	4300									
MANUAL HANDLE 1/4" Hexagonal drive	5000	5000	5000	5000	5000	5000	5000	5000	5000	5000	5000	5000	5000	5000	5000	5000	5000	5000	5000	5000	5000	5000	5000	5000	5000	5000	5000	5000									
DIMENSIONS Diameter x length (mm)	6x8.5	7.9x9.8	9x12.6	9x15.2	9x14.4	9x16.2	10x16.3	9x17.5	10x17.5	7.7x15.3	6x21.8	9x20.8	9x23	7.7x17.4	7.7x20.9	9x23.3	9x25.5	9x21.5	9x20.5	10x19	11x22.8	12x24.5	12x19.5	7.9x15.2	7.9x11.5	6x17.6	8.6x13.2	9x14.4									
PROMINENCE (mm)	2.3	1.9	1.9	3.2	2.4	2.8	2.8	4	4	3.6	3.8	7.3	9	5.4	6.9	6.8	8	7.5	4	4.5	5.3	6.0	4.5	4.5	3.6	3.6	1.0	4.6									
STUD PENETRATION INTO THE RUBBER (mm)	6.2	7.9	10.7	12	12	13.5	13.5	13.5	13.5	11.7	18	13.5	14	12	14	16.5	17.5	14	16.5	14.5	17.5	18.5	15.0	10.7	7.9	14	12.2	9.8									
MINIMUM THREAD Misura generica (mm)	5	5.9	8.5	9.5	9.5	11	9.7	11	11	9.2	18	11	11.5	9.5	11.5	14	15	11.5	14	11.5	14.5	15.5	12	10.7	7.9	14	12.2	6.0									
TIP SIZE (Ø mm)	1.7 <small>TUNGSTEN HEAD POINT</small>	2.2 <small>TUNGSTEN FLAT HEAD</small>	2.6 <small>TUNGSTEN FLAT HEAD</small>	2.6 <small>TUNGSTEN FLAT HEAD</small>	2.6 <small>TUNGSTEN FLAT HEAD</small>	2.6 <small>TUNGSTEN FLAT HEAD</small>	2.6 <small>TUNGSTEN FLAT HEAD</small>	2.6 <small>TUNGSTEN FLAT HEAD</small>	2.6 <small>TUNGSTEN FLAT HEAD</small>	2.2 <small>TUNGSTEN FLAT HEAD</small>	2.2 <small>TUNGSTEN FLAT HEAD</small>	2.2 <small>TUNGSTEN FLAT HEAD</small>	1.6	2.2 <small>TUNGSTEN FLAT HEAD</small>	2.2 <small>TUNGSTEN FLAT HEAD</small>	2.6 <small>TUNGSTEN FLAT HEAD</small>	2.6 <small>TUNGSTEN FLAT HEAD</small>	1.6	2.6 <small>TUNGSTEN FLAT HEAD</small>	3.0 <small>TUNGSTEN ROUND HEAD</small>	3.5 <small>TUNGSTEN ROUND HEAD</small>	3.5 <small>TUNGSTEN ROUND HEAD</small>	3.5 <small>TUNGSTEN ROUND HEAD</small>	1.7 <small>TUNGSTEN HEAD POINT</small>	1.7 <small>TUNGSTEN HEAD POINT</small>	1.7 <small>TUNGSTEN HEAD POINT</small>	2.6 <small>TUNGSTEN FLAT HEAD</small>	1.7 <small>TUNGSTEN HEAD POINT</small>									
ROAD CAR SNOW TIRE	B-C H=3 l=40	B-C H=5 l=40	A-B-C H=7.5 l=40		A-B-C H=9 l=40																																
4X4 OFF ROAD SNOW TIRE OFF ROAD TIRE		B-C H=5 l=40	A-B-C H=7.5 l=40	A-B H=9 l=60	A-B-C H=9 l=40	A-B-C H=10.5 l=40		A-B H=10.5 l=40								A H=13.5 l=70			A-B H=13.5 l=70																		
SAFETY SCHOOL DRIVE SNOW TIRE USE MULTI-SEAL LIQUID							H=10 l=100 F - G		H=10 l=100 D																												
ON ROAD MOTORCYCLE ROAD TIRE OFF ROAD TIRE	B-C H=3 l=40	B-C H=5 l=40	A-B-C H=7.5 l=40	A-B-C H=9 l=40	A-B-C H=9 l=40	A-B-C H=10.5 l=40		A H=10.5 l=40		A-B-C H=8.5 l=40 D																											
MOTORCYCLE ENDURO CROSS RACING												A H=10.5 D l=200			A H=11 D l=200		A H=14.5 G l=200																				
MOTORCYCLE ENDURO CROSS TRAINING / OFF ROAD						B-C H=10.5 G l=60		A-B-C H=10.5 G l=60		A-B-C H=8.5 D l=60		A H=10.5 D l=100		A-B-C H=9 D l=60	A H=11 D l=100	A H=13.5 G l=100			A-B-C H=13.5 G l=60																		
MOTORCYCLE RACING 100% ICE													100%ICE H=11 D					100%ICE H=11 G																			
SPECIAL EVENTS OFF ROAD TIRE								A-B H=10.5 l=150				A H=10.5 l=150			A H=11 D l=150	A H=13.5 G l=150	A H=14.5 G l=150																				
QUAD			B-C H=7.5 D l=40	A-B-C H=9 l=40	B-C H=9 l=40	A-B-C H=10.5 l=40		A-B H=10.5 l=40								A H=13.5 l=40			A-B H=13.5 l=40																		
MOUNTAIN BIKE	A-B-C H=5 l=30																																				
RALLY CAR ICE RACING TIRE						A-B-C H=10.5 l=100		A-B H=10.5 l=100								A H=12 l=100			A-B H=12 l=100																		
RALLY CAR RALLY ROAD TIRE SNOW TIRE		B-C H=5 l=40	A-B-C H=7.5 l=40	A-B H=9 l=40	A-B-C H=9 l=40	A-B-C H=10.5 l=40																															
RACE CARS F1 HARD RUBBER COMPOUND USE MULTI-SEAL LIQUID																												A H=6 l=400									
TRACTORS OPERATIVE CARS																A H=11 l=150 M=45				A-B-C H=9 l=150 M=60	A-B-C H=12 l=150 M=130	A-B-C H=13 l=150 M=200	A-B-C H=10 l=150 M=150														
TRUCKS OPERATIVE CARS			C-B H=6.5 l=120 M=35	A-B-C H=8 l=120 M=35	B-C H=8 l=120 M=35		B-C H=10 l=120 M=45													A-B-C H=9 l=120 M=60	A-B-C H=12 l=120 M=130	A-B-C H=13 l=120 M=200	A-B-C H=10 l=150 M=150														
TRACKS FOR WORK															A H=16.5 l=100					B-C H=14.5 l=100	B-C H=17.5 l=100																
TRACKS FOR SNOWMOBILES AND QUAD											H=18 l=100 L=7								H=16.5 l=100 L=10																		
GO-KART OFF ROAD TIRE			H=8.7 l=66	H=10 l=66	H=10 l=66	H=11.5 l=66		H=11.5 l=66																				H=7.8 l=66									
NON-SLIP SHOES FOR HORSE			B-C H=11 l=8							A-B-C H=12 l=8					A H=14.5 l=8																						
ANTI-WEAR SHOES SUPERMOTARD BOOTS																											H=9 l=7										
NON-SLIP SHOES FOR SPORT, RECREATION, WORK, SPORT FISHING	C-B H=6 l=10  FOOTWEAR RUBBER	C H=8 l=10  FOOTWEAR RUBBER	COMPLETE PACK art. 3000 = 20 studs (8 art. 3000A for heel + 12 art.3000B for front sole) + 1 key art. 3200 + art. 5000 art. 3010 = 20 studs 3000A + 1 key art. 3200 + art. 5000 art. 3020 = 20 studs 3000B + 1 key art. 3200 + art. 5000 art. 3030 = 20 studs 1100 + 1 key art. 4100 + art. 5000 art. 3040 = 20 studs 1000 + 1 key art. 4000 + art. 5000 art. 3050 = 20 studs 1605 + 1 key art. 3200 + art. 5000										REFILL PACK art. 3100 = 20 studs (8 art. 3000A for heel + 12 art.3000B for front sole) art. 3110 = 20 studs 3000A art. 3120 = 20 studs 3000B art. 3130 = 20 studs 1100 art. 3140 = 20 studs 1000 art. 3150 = 20 studs 1605																				A-B-C H=10.7 l=10  FOOTWEAR RUBBER	A-B-C H=7.9 l=10  FOOTWEAR RUBBER	A-B-C H=14 l=10  FOOTWEAR FELT		

A = MUCH SNOW    B = LITTLE SNOW    C = WITHOUT SNOW    D = FRONT TIRE WITHOUT DRIVE    E = REAR TIRE WITHOUT DRIVE    F = FRONT TIRE WITH DRIVE    G = REAR TIRE WITH DRIVE H = MINIMUM TREAD    l = MINIMUM QUANTITY IN EVERY WHEEL OR FOOTWEAR    L = WIDTH LEAST WEDGE TRACK    M = TOTAL WEIGHT IN QUINTALS    All measures are expressed in millimeters																													
VERY EFFICIENT NAILING								EFFICIENT NAILING												NOT VERY EFFICIENT NAILING									

ATTENTION! For use the studs, always follow the normative in force in your own country. Bestgrip dissolves from all liability to misuse the products