

Fibo Intercon

Mobile concrete batching plants
T1200, T1800 and T2200



Your partner in concrete solutions



A compact solution providing reliability and great economy



High performance, flexibility and profitability

This mobile batching plant can replace a small concrete factory as it can handle even larger construction projects.

The T-model is assembled with a container twist lock system.

The standard capacity of the T1200 is 10-16 m³/hour and 25-45 m³/hour for the T2200. For the production of stiff mix concrete even higher capacity is possible.

The powerful pan mixer is equipped with adjustable mixing arms, robust mixing shovels and side scrapers providing a high uniform concrete quality and a short cycle time.

A high quality is also ensured by the

integrated control system, which controls and monitors all processes and connected equipment.

All our T-models are fast and easy to assemble. All you have to do is connect electricity, water and any other equipment, then fill sand and gravel in the hoppers. The container twist lock system makes it easy to move the plant between building projects.

The T-model is a profitable investment which will soon pay for itself and return a profit. To illustrate the savings by using a mobile concrete batching plant instead of buying ready mixed concrete, Fibro Intercon has developed a calculation scheme where you can en-

ter data like consumptions of concrete, aggregates and costs to calculate your annual savings.

All wearing parts are produced in robust materials and can be replaced separately, which minimizes operating costs. All of the plant components are easily accessible for facilitating daily cleaning, maintenance, and service.

Please visit our web site:
www.fibointercon.com

To view your possibilities.

Technical specifications of T-models



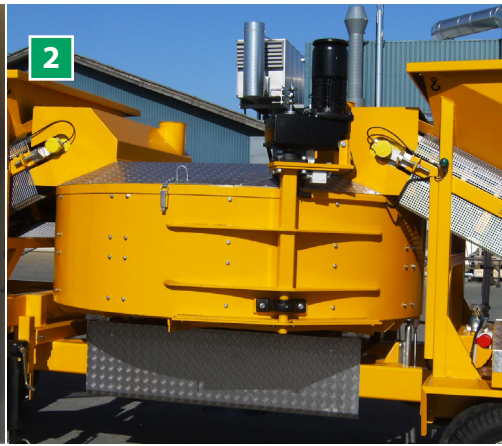
We offer three mobile concrete batching plants with a container twist lock system:

Model		T1200	T1800	T2200
Volume (gross/net)	L	1200/800	1800/1100	2200/1400
Capacity	M ³ /hour	10-16	20-30	25-45
Motor	kW	15	30	55
Mixing arms/side scrapers	pcs	6 / 1	6 / 1	8 / 1
Load cells	kg	3 x 2000	3 x 5000	3 x 5000
Weighing accuracy	%	+/- 0.5	+/- 0,5	+/- 0.5
Dosing accuracy	%	+/- 3	+/- 3	+/- 3
Recipes	pcs	50	50	50
Aggregate hoppers	pcs	4 x 2.4 M ³	4 x 2.4 M ³	4 x 2.4 M ³
Water tank	L	250/500	500	500
Dimensions (W x H x L) excl. trailer	M	2.3 x 2.61 x 8.7	2.4 x 2.61 x 8.9	2.58 x 2.61 x 9.1
Weight excl. trailer	kg	6000	9500	10500
Power	Volts	3 x 400	3 x 400	3 x 400
	A/KVA	40A 28KVA	80A 55KVA	125A 86KVA
Generator	KVA	60	100	150
Pre-weighing cement silo	L	800	800	800



1 Control system

Possibility of manual, semi-automatic, and automatic operation and PC interface. No previous knowledge required and can be delivered with the language version desired. Stores 50 recipes. Dosing accuracy: +/- 0.5 - 2%.



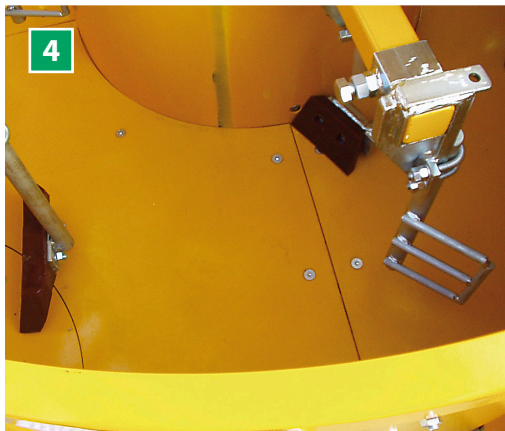
2 Pan mixer

Pan mixer in steel with an internal lining of replaceable, sectioned wearing plates and Hardox steel-plate bottom and enclosure. It is equipped with a gear motor for optimized effect, automatic radial opening, inlet for cement auger and inspection hatches.



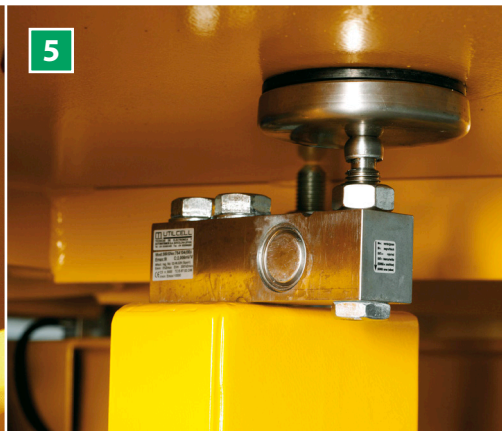
3 Hoppers

Four integrated twin hoppers for 2 x 2 types of aggregate. Each hopper holds 2 x 2.4 m³. Made in all welded steel plate with reinforced corners. 2 x 2 separate feed belts for the dosing of aggregates.



4 Mixing arms and side scrapers

Adjustable mixing arms and side scrapers in steel and hard PVC. Equipped with safety bolts to prevent large stones from seriously damaging the mixing arms.



5 Load cells

The pan mixer is placed on three electronic load cells with an accuracy of +/- 0.5%.



6 Discharge

Possibility of manual, semi-automatic, and automatic discharge. Complete with overload protection and position sensor.



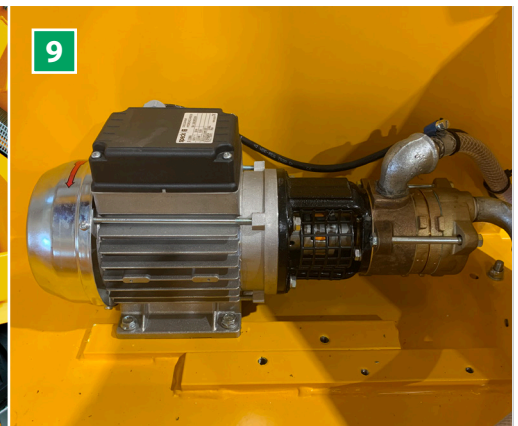
7 Flowmeter

Parallel dosing of water and aggregates for reduced cycle time, pan mixer wear and reduced energy consumption.



8 Equipment

The standard T-model is delivered with a high-pressure cleaner while the additive pumps are optional.



9 Additive pump (optional)

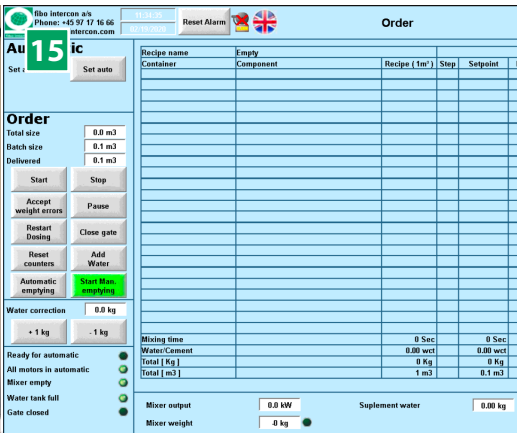
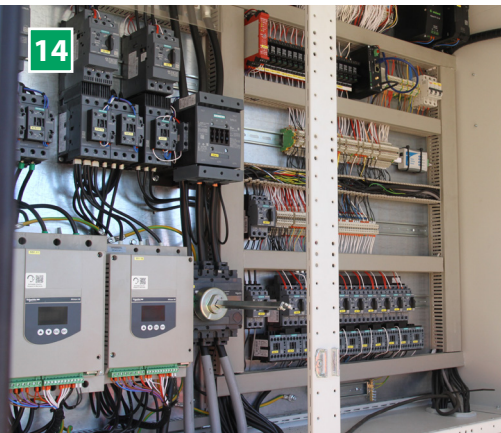
High quality dosing pump 0,25 kW for additive liquid, with 3/8" suction hose, check valve, and stainless steel strainer. Possibility for installation of 1 - 4 additive pumps.



10 Vibrators (optional)
Vibrator MVE 100/3 for vibrating sand out of hopper, with cabling and switch. Require placement on the left or right side of hopper.

11 Second outlet on mixer (optional)
PLC controlled automatic and electro-mechanical radial mixer opening with a position switch, including an additional seal at the opening for waste concrete, or an additional automatic emptying outlet for cleaning the batching plant.

12 Enlarged silo sides (optional)
Get a capacity of 60% more. The enlarge silo sides for hopper gives 1.5 m³ more in each hopper, so the total volume in each hopper is 3.9 m³. With this enlarge hopper sides, there is enough sand/stone for ¾ hour.



13 Flow measurement chemistry (optional)
Electromagnetic flow measurement, ½" in stainless steel, max. 16 bar, temperature -10 to + 70 ° C, minimum conductivity 20 µS / cm. The flow measurement guarantees a dosing accuracy to +/- 1% (repeatedly +/- 0.2%), according to EN 206-1.

14 Frequent converter (optional)
Frequent converter on mixer motor to achieve the perfect speed in the mixing sequence. The frequent converter can reduce the generator size by 25%.

15 Wattmeter (optional)
KW measurement on the mixer motor to measure the load of the motor, to decide the viscosity of the concrete. The viscosity gives control over the water/chemical ratio in the concrete so that an equal target/flow number is achieved for the concrete.



16 Water heating (option)
Electric heating in the water tank for frost protection. Complete with thermostat and switch in control cabinet for automatic operation and frost protection. Power 4 kW. Voltage 3 x 400 volts, 50 Hz or 7.5 KW

17 Water protection cover (option)
Removable cover made in heavy duty PVC, to protect material hopper from the elements and for easy cleaning of the material bunker.

18 Insulation (option)
Liquid supply lines are provided with a trace heating tape and additionally insulated. The chemistry and high-pressure cleaner box are provided with a radiant heater.



19

19 Preweighing of cement (optional)

Cement silo combined with cement auger. The equipment is suspended in weighing cells. The cement silo is supplied with a vibrator on the silo box and filter bag to reduce dust emissions when refilling. With the pre-weighing of cement, the dosage tolerance is +/- 1 % for the plant.



20

20 Generator (optional)

High quality diesel generator for off-grid power supply. 30 - 200 KVA. Possibility of adding emissions filter.



21 Control cabin (optional)

The Control Cabin is available in various specifications. We offer a number of control cabin options that can be customized to meet your particular requirements.



22

22 Test laboratory (optional)

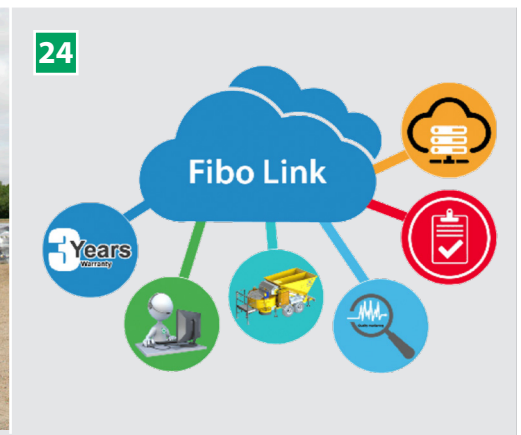
The fibo intercons test laboratory in container is designed for use on remote sites, enabling the routine testing of soil and concrete to be carried out efficiently. **See separate document for the laboratory.**



23

23 Trailer with twistlock system (optional)

40 feet trailer with 2 or 3 axles twinlock system. The trailer will be delivered with 4-6 support legs.



24

24 Fibo Link cloud system (optional)

The software controls the batching process of the concrete batching plant. This means the data is safe; it can be used for automating documentation, improving productivity, delivering live quality control and lots more. **See separate document for Fibo Link.**



25

25 Remote control (optional)

Remote control with the functions: auto start / stop mixing system, - open / close emptying slide.



26

26 Spare parts (optional)

Spare parts kit for mixer arms consisting of mixer shovels, mixer arms, finger scrapers, fittings, safety bolt and side scraper. **Included in Fibo Service+**



27

27 Wear plates (optional)

Replaceable sectioned wearing plates in Hardox steel for bottom and side of the pan mixer incl. bolts, nuts, and disks. (OBS! Wear plates for 1200 models, needs to be welded on).

28

**28 Belt conveyors**

Belt conveyors in belt widths of 0.8 m, 1.0 m, and 1.2 m and lengths of 4 - 14 m. Available mounted on either wheel, height-adjustable legs, or a frame with draw hook. All conveyors are delivered complete with drum motor, integrated gearbox, inlet, and lifting devices for easy transportation.

29

**29 Big bag cement silo with ø193 auger**

Big bag silo in fully welded construction with height-adjustable support legs. Complete with cement auger, counterweight for cement auger, cone with outlet flange, top hatch, a grid for cement inlet, cutter for big bags, control unit, a set of electrical wiring and connection and lifting devices.

30

**30 Vertical cement silos**

Vertical cement silos with capacities between 15- 35 m³. They are designed for filling big bags or cement tanker. The vertical cement silos can be delivered with several options. The choice of options will depend on the shape and purpose of the silo.

31

**31 Horizontal cement silos**

Horizontal cement silos with capacities between 18- 38 m³. The horizontal cement silos can be delivered with a number of options. The choice of options will depend on the purpose of the silo.

32

**32 Cement auger with gearbox**

Available in several lengths. All augers are delivered complete with either flange or universal ball joint inlet, flange for butterfly valve, cylindrical outlet, inspection hatch under the inlet. Etc.

33

**33 Concrete pump**

The concrete pump is a moveable stamp pump that is hydraulically controlled with a full detector, motor and control system.

34

**34 Level sensor for concrete pump**

Level sensor installed in concrete pump. The sensor ensures an automatic opening of the mixer gate to give a better flow at the concrete pump.

35

**35 Interlocking concrete Moulds**

Moulds for interlocking concrete blocks. Based on a thought out reconfigurable design, to produce various block shapes and sizes from cast concrete.

36

**36 Vibrating poker**

A concrete vibrator is a handheld electric concrete vibrator, designed for removing air bubbles from freshly placed concrete.

High Quality concrete solutions

Many years of experience in the industry has made Fibo Intercon a leading supplier to the global concrete industry. We manufacture and deliver both mobile, semi-mobile and stationary concrete batching plants as well as production equipment and complete concrete systems.

In our production, we only use state of the art technologies and methods to ensure our customers the best quality, efficiency, and reliability.

Over the years, we have been developing and delivering high quality solutions to customers all over the world. The products delivered have ranged from standard batching plants to unique customized solutions, and our batching plants have been used for both small and large scale building projects.

Fibo Intercon strives to provide quick and competent service. We have developed our own representative network in several countries, and our service technicians are ready to go to your place and help you with the installation and servicing of your batching plants and the training of your employees.

2020-08-06. Copyright © fibo intercon. No responsibility can be accepted for printing errors. Construction subject to change without notice. The models displayed may include optional equipment.

Representative:

fibo intercon a/s

Herningvej 4
DK-6920 Videbaek
Denmark
Phone: +45 97 17 16 66

info@fibointercon.com
www.fibointercon.com

