

IEC Appliance Inlet C22 for Hot Conditions, with Filter for High Temperatures, Front Side Mounting

Standard- or Medical-Filter



new



C22



155° C



### Description

- Panel Mount:  
Screw-on from front side
- 2 Functions:  
Appliance Inlet Protection class I, Line filter in standard and medical version
- Solder, quick connect or wires (stranded)

### Approvals

- VDE Certificate Number: 104884
- UL File Number: E72928

### Characteristics

- Compact design with optimal shielding  
Suitable for high ambient temperatures up to 75°C
- Version with class X1 and X2 (standard version) capacitors
- Universal line filter for standard applications  
Designed for standard and medical applications
- Qualified for use in equipment according IEC/EN 60950

### Other versions on request

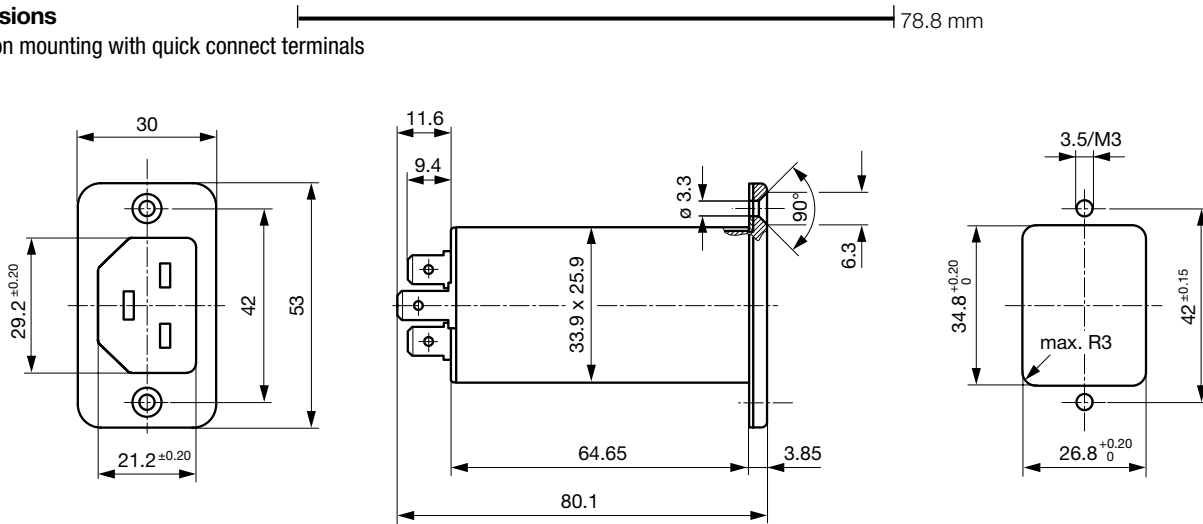
- flexible wire with various lengths

### Technical Data

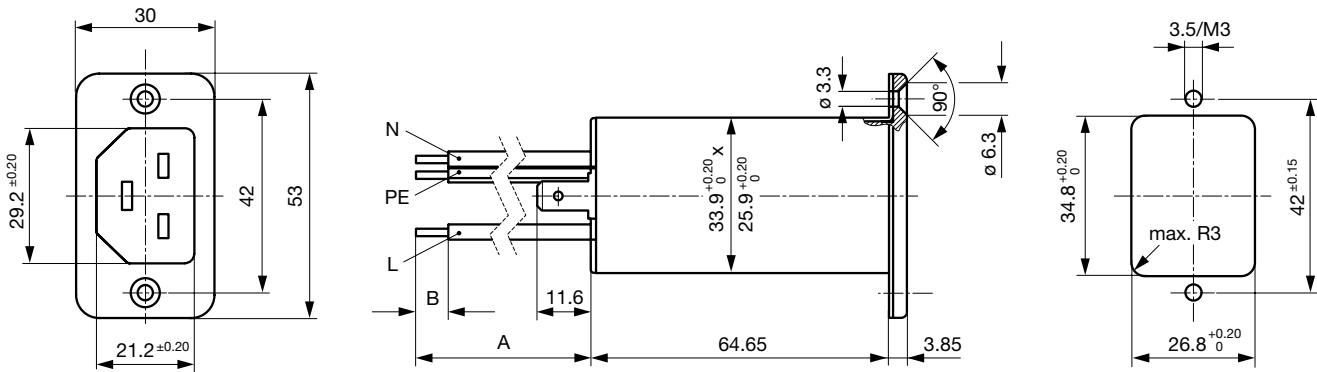
Ratings IEC	16A @ Ta 75 °C / 250VAC; 50Hz	Appliance-Inlet/-Outlet	C22 acc. to IEC/EN 60320-1,
Ratings UL/CSA	20A @ Ta 65 °C / 250VAC; 60Hz		UL 498, CSA C22.2 no. 42 (for hot conditions) pin-temperature 155 °C, 16A, Protection Class 1
Leakage Current	standard < 0.5mA (250V / 60Hz) medical < 5 µA (250 V / 60 Hz)	Line Filter	Standard and Medical Version, IEC 60939, IEC 60601-1, UL 1283, UL 544, EN 133 200, CSA C22.2 no. 8 <a href="#">Technical Details</a>
Dielectric Strength	> 1.7kVDC between L-N (Cy2) > 2.7kVDC between L/N-PE (Cy2) Test voltage (2 sec)	MTBF	> 1'400'000h acc. to MIL-HB-217 F
Impulse Withstand Voltage	> 2.5kV between L-N (CX2) > 4 kV between L-N (CX1) > 5kV between L/N-PE (Cy2) voltage (1.2/50 µs)		
Allowable Operation Temp.	-25°C to 100°C		
Climatic Category	25/100/21 acc. to IEC 60068-1		
Degree of Protection	from front side IP 40 acc. to IEC 60529		
Protection Class	Suitable for appliances with protection class 1 acc. to IEC 61140		
Terminal	Solder, quick connect or wires (stranded)		
Panel Thickness s	Screw: max 8mm Mounting screw torque max 0.5Nm		
Material: Housing	Thermoplastic, black, UL 94V-0		

### Dimensions

Screw-on mounting with quick connect terminals



Screw-on mounting with wire leads



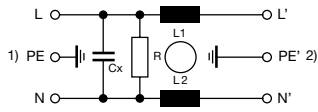
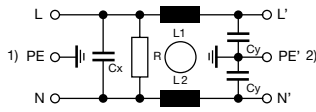
### Technical Data of Filter-Components

Rated Current [A]	Filter-Type	Inductances L [mH]	Capacitance CX [nF]	Capacitance CY [nF]	R [MΩ]
16	Standard Version	2 x 0.6	100	2.2	1
16	Standard Version	2 x 0.6	330	2.2	1
20	Standard Version	2 x 0.3	100	2.2	1
20	Standard Version	2 x 0.3	330	2.2	1
16	Medical Version (M5)	2 x 0.6	100	-	1
20	Medical Version (M5)	2 x 0.3	100	-	1
20	Medical Version (M5)	2 x 0.3	330	-	1
16	Medical Version (M80)	2 x 0.6	100	0.47	1
20	Medical Version (M80)	2 x 0.3	100	0.47	1

**Diagrams**

Standard or medical version (M80)

Medical version



1) Line  
2) Load

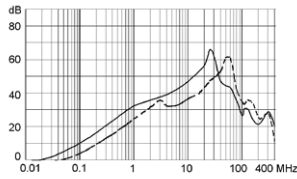
1) Line  
2) Load

**Attenuation Loss**

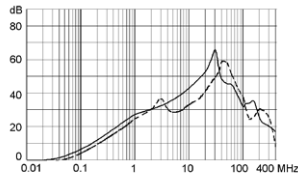
- - - differential mode    \_\_\_\_\_ common mode

Standard version

16 A

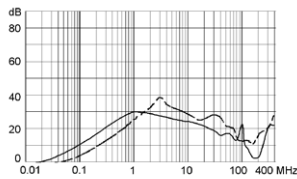


20 A

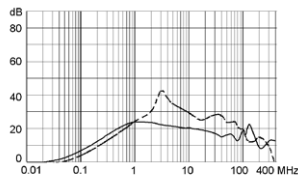


Medical version (M5)

16 A

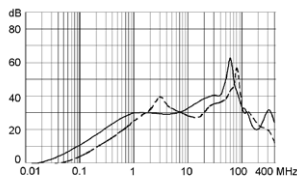


20 A

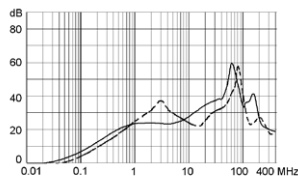


Medical version (M80)

16 A



20 A



**Variants**

Rated Current IEC [A]	Rated Current UL [A]	Filter-Type	Panel mounting	Mounting side	Terminal	Capacitor	Order Number
16	16	Standard Version	Screw	Front-Side	Quick connect terminals 6.3 x 0.8	X2 330nF	C22F.1107
16	20	Standard Version	Screw	Front-Side	Quick connect terminals 6.3 x 0.8	X2 100nF	C22F.0101
16	16	Standard Version	Screw	Front-Side	Quick connect terminals 6.3 x 0.8	X2 100nF	C22F.1101
16	20	Standard Version	Screw	Front-Side	Quick connect terminals 6.3 x 0.8	X1 100nF	C22F.0103
16	20	Standard Version	Screw	Front-Side	Solder terminal	X2 330nF	C22F.0007
16	20	Standard Version	Screw	Front-Side	Solder terminal	X2 100nF	C22F.0001
16	16	Standard Version	Screw	Front-Side	Solder terminal	X2 100nF	C22F.1001
16	20	Standard Version	Screw	Front-Side	Solder terminal	X1 100nF	C22F.0003
16	20	Medical Version (M5)	Screw	Front-Side	Quick connect terminals 6.3 x 0.8	X2 100nF	C22F.0102
16	16	Medical Version (M5)	Screw	Front-Side	Quick connect terminals 6.3 x 0.8	X2 100nF	C22F.1102
16	20	Medical Version (M5)	Screw	Front-Side	Solder terminal	X2 330nF	C22F.0008
16	20	Medical Version (M5)	Screw	Front-Side	Solder terminal	X2 100nF	C22F.0002
16	16	Medical Version (M5)	Screw	Front-Side	Solder terminal	X2 100nF	C22F.1002

Rated Current IEC [A]	Rated Current UL [A]	Filter-Type	Panel mounting	Mounting side	Terminal	Capacitor	Order Number
16	20	Medical Version (M80)	Screw	Front-Side	Quick connect terminals 6.3 x 0.8	X2 100nF	C22F.0105
16	16	Medical Version (M80)	Screw	Front-Side	Quick connect terminals 6.3 x 0.8	X2 100nF	C22F.1105
16	20	Medical Version (M80)	Screw	Front-Side	Solder terminal	X2 100nF	C22F.0005
16	16	Medical Version (M80)	Screw	Front-Side	Solder terminal	X2 100nF	C22F.1005

**Packaging unit** 20 Pcs

### Accessories

#### Description

