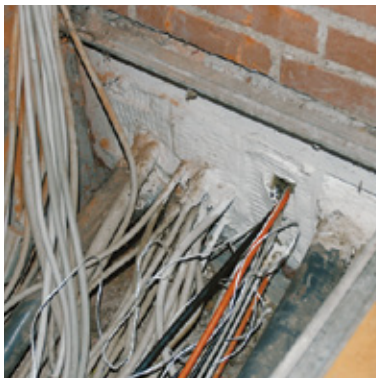
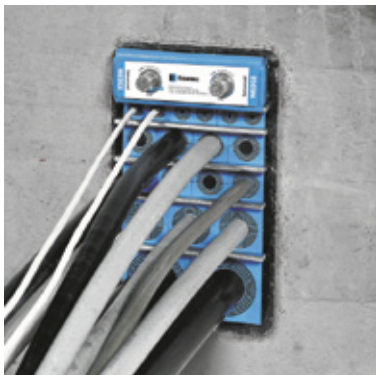


REPORT

Roxtec – the preferred solution at Danish wastewater plant



Before



After



In competition with other types of sealing solutions Roxtec became the preferred technical product, solution

and supplier to a number of wastewater treatment plants in Denmark. The wastewater plants in question are three

existing units in the Odense municipality area undergoing refurbishment, and Roxtec has now supplied to all of them.

Gas tightness and flexibility saves time and money

A challenge for operators of water treatment plants is the corrosive environment and the sulphuric gases and aggressive steam. These wear down equipment, shorten life span and add risk of system breakdown of the plant, its machines and electrical cabinets.

Roxtec products are approved for use between fire rated zones and tested for water/gas tightness applications. They seal against intrusion of polluted water,

sulphuric gases and odours. Roxtec products also protect against intrusion of rodents.

The transits are easy to install and can be opened and closed repeatedly. This supports the need of the service staff for fast installation and flexibility. A requirement from Odense Water Supply, is a close cooperation with the sealing system supplier. This is easy as Roxtec is present through a local office in Nivaa.

Improvement

The users at the plants, with long experience from different sealing products, agreed that Roxtec seals meant a great improvement in comparison with previous solutions.



Facts

Plants

Ejbymølle, Nordvest, Nordøst wastewater treatment plants, Odense, Denmark.

Specification

Roxtec transits for fire proof, gas tight, watertight cable and pipe installations, including vibration dampening of pipes. Protection from sulphuric gases, ammonia, sewage gases and rodents.

Main features

Gas tightness and installation flexibility. Easy service/maintenance/upgrade.

Products

Roxtec R frames, Roxtec RS seals and Roxtec G frames with Multidiameter™, the flexible Roxtec technology based on sealing modules with removable layers.

Wastewater References

Usserød Renseanlæg, Hørsholm, Denmark
Børkop Renseanlæg, Børkop, Denmark
Grindsted Renseanlæg, Grindsted, Denmark
ITT Flygt A/S, Denmark
Hetlingen WWP, Pinneberg, Germany
RWZI A4, DWR, Amsterdam, the Netherlands
Hamas Polder, Defluent, Den Haag, the Netherlands
RWZI Apeldoorn, Waterschap Veluwe, Harderwijk, the Netherlands
RWZI Rilland/Bath, Hoogheemraadschap West Brabant, Bath, the Netherlands
Hythe WWTW, Kent, UK
Lowestoft WWTW, Norfolk, UK



Roxtec International AB
Box 540, SE-371 23 Karlskrona, SWEDEN
PHONE +46 455 36 67 00, FAX +46 455 820 12
EMAIL info@roxtec.com, www.roxtec.com