



Robot+PLUS

Automatic tool changer CPS

Modular. Robust. Flexible.

Hand in hand for tomorrow



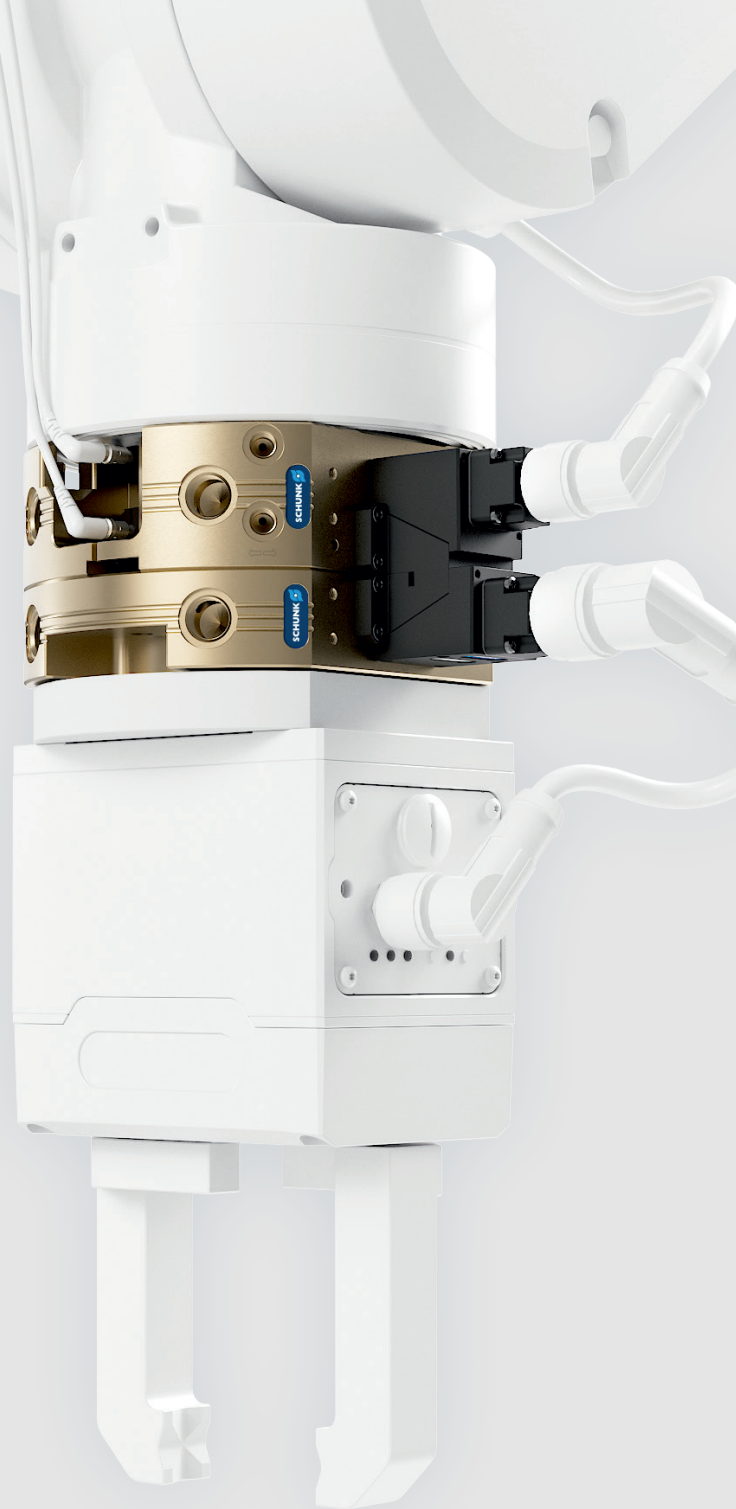
Automatic tool changer CPS

The CPS, consisting of a quick-change master and a change adapter, is ideal for changing end effectors. With fast changing cycles you can increase your system's flexibility, minimize downtimes, and optimize the machine's utilization.



Your added value:

- + Consistent compatibility**
Thanks to full compatibility with SWS change masters and adapters, existing applications can be expanded or replaced on a 1:1 basis using the CPS system.
- + Optimal size selection**
The CPS offers a wide range of applications with 18 sizes
- + Versatile media transmission**
The broad range of signal, pneumatic, fluid, and communication modules expands the application possibilities of the tool changer
- + Longevity**
The use of hardened steel in all functional parts increases durability and extends service life



Sensor queries

Optionally available sensors enable a process-safe verification of the locking status of the quick-change master and the presence of the adapter

New locking mechanism

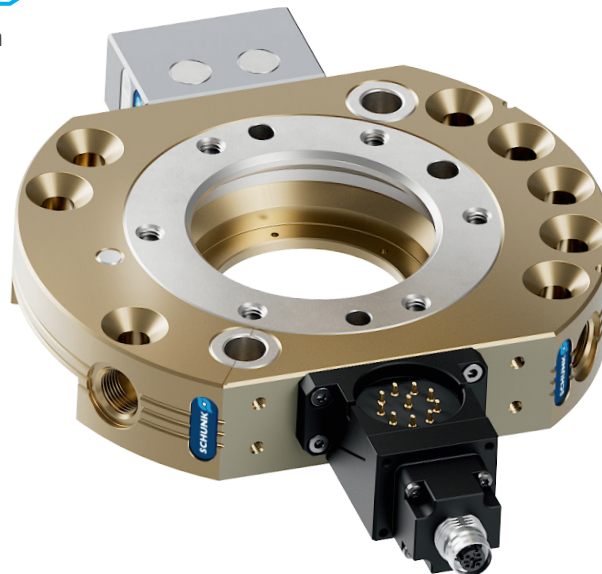
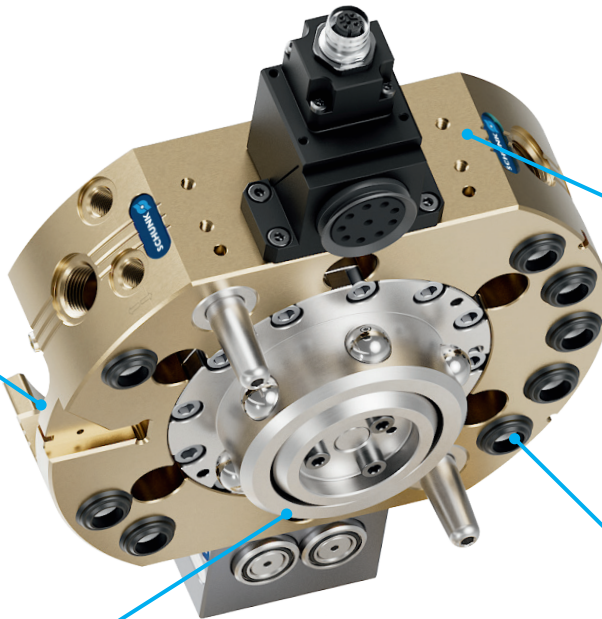
The new self-retaining locking system with an integrated spring ensures reliable coupling between the change master and the adapter, enhancing operational safety in the event of an unexpected air pressure drops

Easy assembly

Assembly can be done quickly and easily via standardized adapter plates or ISO flange patterns

Integrated energy supply

The integrated pneumatic pass-throughs ensures a reliable supply of the handling modules and tools



Varieties of options

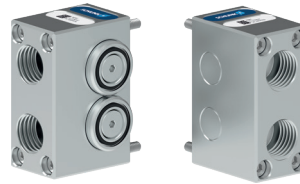
With over **200 modules**, the automatic CPS tool changer offers a wide selection of options for media transfer, ensuring the right solution for any applicaiton.



Signal modules



Pneumatic modules



Fluid modules



Communication modules

Interested?

In addition to the user-friendly automatic CPS tool changer, SCHUNK offers a comprehensive complementary portfolio. Please contact us.

Tel.: +46855442100
info@se.schunk.com



SCHUNK SE & Co. KG
Spanntechnik
Greiftechnik
Automatisierungstechnik

Morabergsvägen 28
Södertälje, 152 42
Tel. +46855442100
info@se.schunk.com
schunk.com/se/en

Follow us

