



MobyDick ConLine KIT Flex
rugged, functional, efficient



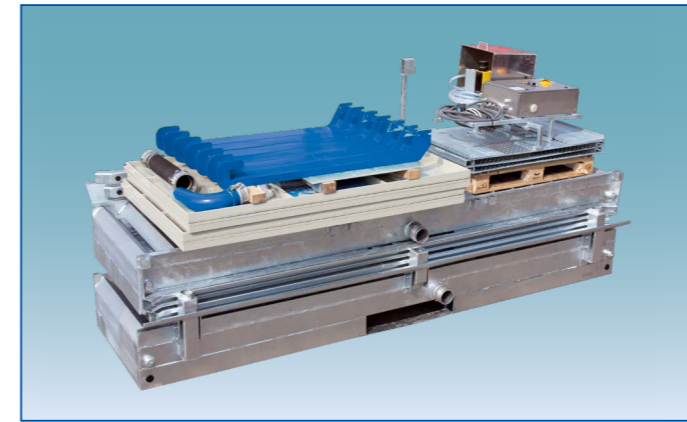
The modular concept for the
building industry

FRUTIGER
a whale, a promise!
www.mobydick.com

MobyDick ConLine

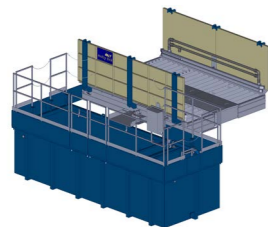
Wheelwashing KIT Flex

MobyDick ConLine | KIT Flex is a model range designed specifically to meet the needs of the construction industry. Based on the MobyDick technology, which has been tried and tested for decades, these wheel washing systems have impressive robust design, a high degree of functionality and efficient water recycling. All systems are installed in the shortest possible time, ready for operation and characterised by excellent mobility. Every model can be easily converted into another model variant.

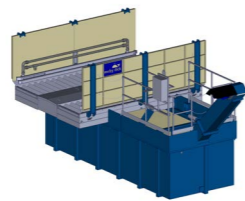


The components can be easily transported and stored to save space.

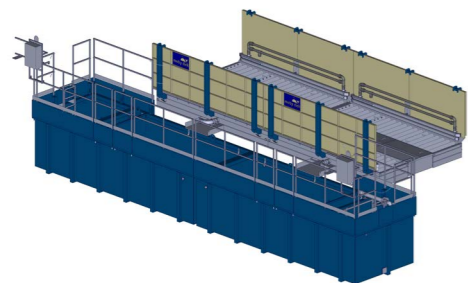
Stationary models: For maximum functionality and simple installation



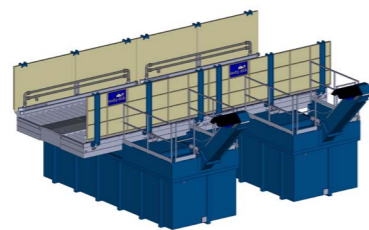
KIT Flex 400 B



KIT Flex 400 C (with scraper conveyor)

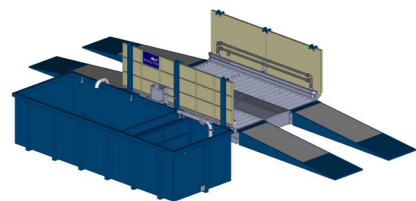


KIT Flex 800 B

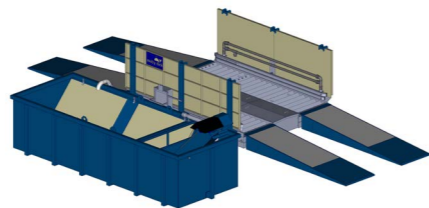


KIT Flex 800 C (with scraper conveyor)

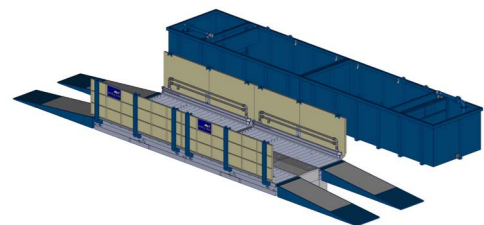
Mobile models: Ready in a matter of hours



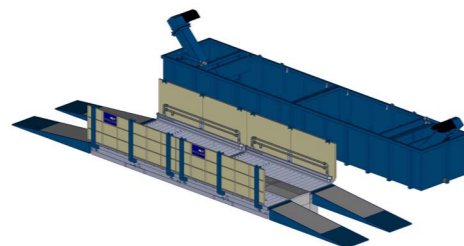
KIT Flex 400 Mobile B



KIT Flex 400 Mobile C (with scraper conveyor)



KIT Flex 800 Mobile B



KIT Flex 800 Mobile C (with scraper conveyor)



ConLine KIT Flex offers a system with lasting value at a very good price-performance ratio with short delivery times.



Also available as a fully mobile system consisting of a wash unit with ramps and a recycling tank at ground level.

Options

Backwash (Exit Area Backwash System)

Side nozzle bars in the exit area backwash the dripping dirty water of the exiting vehicles back into the system.



MobyDos Compact (Flocculent Dosing System)

A compact dosing system for the automatic addition of the flocculant ensures that contaminated water is cleared effectively and quickly.



Manual Wash (Hose and Lance)

A mechanism for additional manual cleaning of vehicle superstructures, devices and for the area surrounding the wheel washing system.



Safety Railing (Safety rails)

A circumferential, galvanised steel railing made of square pipe provides the recycling tank with personal protection.



Separate water tank

The lack of a water supply is no longer a problem with the external water tank.



Performance Data ConLine Models

KIT Flex 400 B

KIT Flex 400 C

KIT Flex 800 B

KIT Flex 800 C

KIT Flex 400 Mobile B

KIT Flex 400 Mobile C

KIT Flex 800 Mobile B

KIT Flex 800 Mobile C

Complete truck wheel washing system

Wash unit and nozzle configuration	1	1	2	2	1	1	2	2
- Water-bearing construction	✓	✓	✓	✓	✓	✓	✓	✓
- Galvanised construction	✓	✓	✓	✓	✓	✓	✓	✓
- Angle sections with floor nozzles (profile washes)	✓	✓	✓	✓	✓	✓	✓	✓
- Horizontal double-sided nozzle bars	✓	✓	✓	✓	✓	✓	✓	✓
- Splash protection walls	✓	✓	✓	✓	✓	✓	✓	✓
Recycling tank package	1	1	2	2	1	1	2	2
Scraper conveyor for recycling tank	-	1	-	2	-	1	-	2
Recycling tank wall extensions	1	1	1	1	-	-	-	-
MobyPump washing pumps	2	2	4	4	1	1	2	2
Optic sensor start initiation	✓	✓	✓	✓	✓	✓	✓	✓
Pump for backwashing the dirty water	-	-	-	-	1	1	2	2
Complete ramp set (entry and exit ramps)	-	-	-	-	✓	✓	✓	✓

Specifications and technical data

Length of the wash unit [cm]	400	400	800	800	400	400	800	800
Clear drive through width of the wash unit [cm]	280	280	280	280	280	280	280	280
Maximum axle load [t]	15	15	15	15	15	15	15	15
Height of splash walls [cm]	136	136	136	136	136	136	136	136
Nozzles (min. 7 mm core diameter)	130	130	260	260	112	112	224	224
Nozzle bars per side	2	2	2	2	2	2	2	2
Recycling tank volume [m ³]	20	20	40	40	20	20	40	40
Service water useful volume [m ³]	16.9	11	33.8	22	16.9	11	33.8	22
Clarifying area recycling tank [m ²]	13	13	26	26	13	13	26	26
Ejection height of chain conveyor above ground surface [cm]	-	125	-	125	-	195	-	195
Maximum pump power [m ³ /min]	5	5	10	10	2.5	2.5	5	5
Connected load of the entire system [kW]	11.2	11.5	22.4	23	11.2	11.5	22.4	23
Acoustic emission* [dB]	< 75	< 75	< 75	< 75	< 75	< 75	< 75	< 75

*The given sound power level was measured using the enveloping surface method, with the operator's ear or truck driver's ear in the driver's compartment, with the window open.

Options (for additional price)

MobyDos Compact (flocculent dosing system)	✓	✓	✓	✓	✓	✓	✓	✓
Chassis Wash	✓	✓	✓	✓	-	-	-	-
Backwash (Exit Area Backwash System)	✓	✓	✓	✓	✓	✓	✓	✓
Manual Wash (hose and lance)	✓	✓	✓	✓	-	-	-	-
Safety Package (safety railing for recycling tank)	✓	✓	✓	✓	-	-	-	-
Separate water tank	✓	✓	✓	✓	✓	✓	✓	✓
Assembly and commissioning	✓	✓	✓	✓	✓	✓	✓	✓



MobyDick Wheel Washing

With a wide selection of customised (TailorMade) and standardised (ConLine) wheel washing systems, the MobyDick-wheel washing line has been providing a suitable solution for every problem for 30 years.



MobyDick Demucking

The washing systems in the Demucking line automatically free the frame, the underbody and the wheels or crawler tracks of vehicles from coarse debris in a matter of minutes.



MobyDick Dust Control

MobyDick Dust Control offers a wide selection of modern canons for dust control. Typical areas of application include construction sites, materials handling sites, recycling yards, quarries, mines, steel and cement factories.



FRUTIGER
a whale, a promise!

FRUTIGER Company AG
Stegackerstrasse 26
CH-8409 Winterthur
Telefon +41 52 234 11 11
Fax +41 52 234 11 00
info@frutiger.ch
www.mobydick.com