

Power Generation

corrosion resistant

dimensionally accurate

easy to assemble

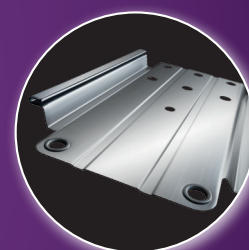
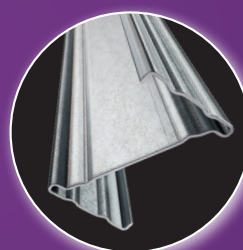
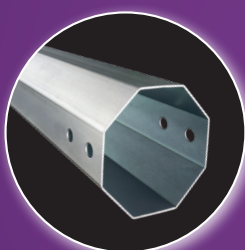
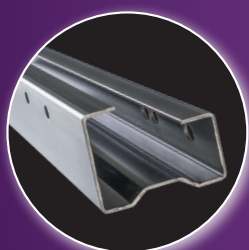
weight saving

weatherproof

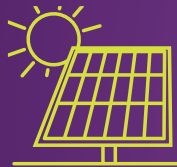
Sustainable arguments for our metal sections

Optimal material selection, highest corrosion resistance and the tightest of tolerances set our power generation profiles apart.

Our products are environmentally optimized over their entire product life cycle – from raw materials, the use of resources and production technology to transport logistics.



Power Generation



SOLAR ENERGY



ENVIRONMENTAL TECHNOLOGY



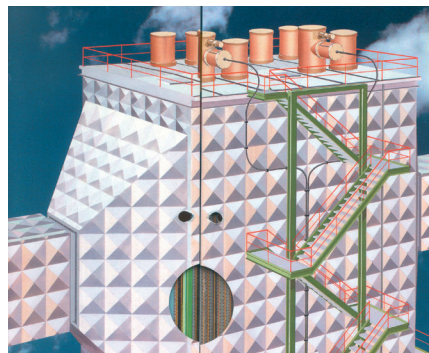
POWER SUPPLY

Why buy from Welsers?

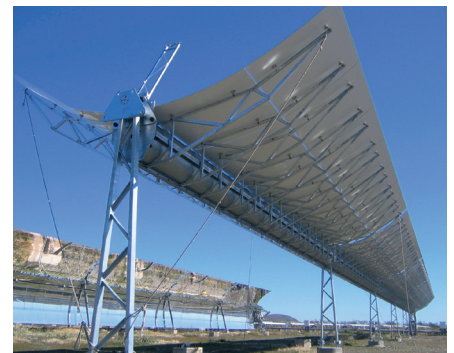
- Weight savings through ingenious roll-forming technology
- Efficiency due to high level of prefabrication – including all perforations, embossing and brackets upon request
- Further processing and assembly made easy thanks to maximum straightness and minimum torsion
- Durability and resilience thanks to the selection of optimal primary materials
- Ultimate service as a result of worldwide availability and a continuously optimized value chain



Photovoltaic structures require sections offering a long service life, which are easily assembled.



It is essential that filter plates are capable of holding an electric charge in order to guarantee dust attraction. This can only be made possible by selecting the most suitable material.



Sections for solar thermal power plants should be able to withstand heavy loads and be easy to maintain.

- Manufacturer of high-quality special profiles and complex assemblies through the roll forming of steel and non-ferrous metals
- Family organisation currently in its 11th generation
- More than 23,500 different profiles produced to date
- Total manufacturing area 587,000 m²
- Approx. 2,350 employees
- 4 production sites / approx. 90 roll forming lines
- Sales offices worldwide