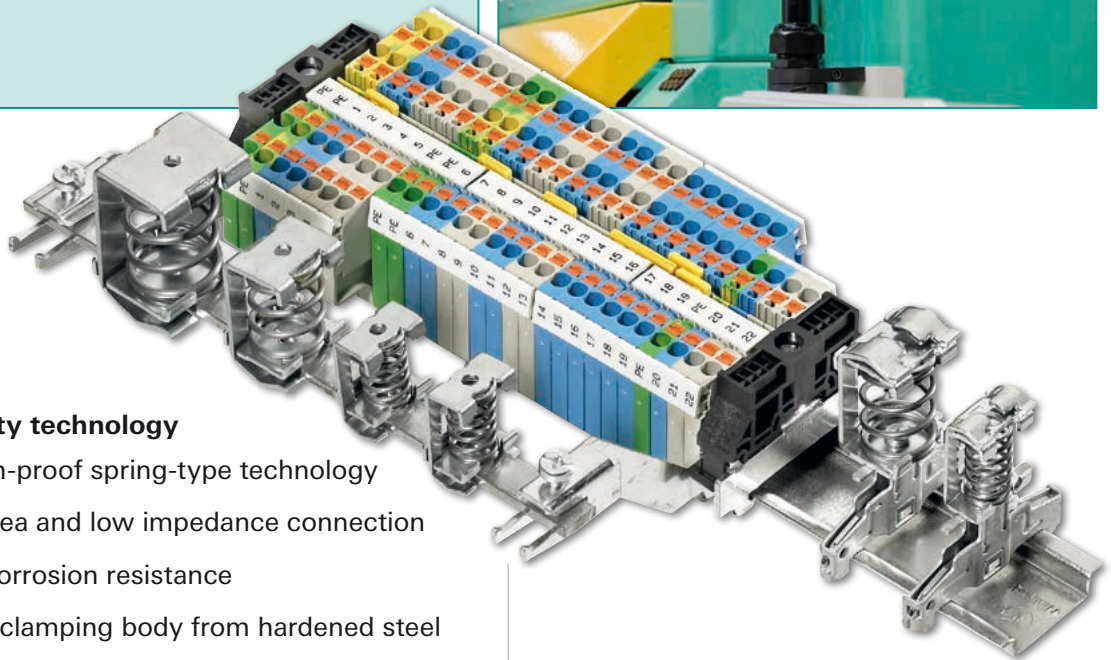


Shielded cable terminal blocks – for trouble-free operation

High interference immunity is an important topic in industrial and process technology. It is one of the key factors affecting the availability of plants. For our **selos** and **fasis** terminal block series, we offer WST, a system that enables the cable shield to be connected to the housing earth in a simple, practical manner.

► Features

- Simple mounting - also if upgraded, service and maintenance
- Broad range - up to 32 mm cable diameter
- Top-quality, maintenance-free technology
- Various mounting options



► Top-quality technology

- Vibration-proof spring-type technology
- Large-area and low impedance connection
- Highly corrosion resistance
- Durable clamping body from hardened steel

► Various applications

- On busbar
- On rail TS 35
- On C-profile
- With screw for mounting plates

► Various accessories

- Busbar support for TS 35
- Busbar support for insulated mounting
- Connection terminals

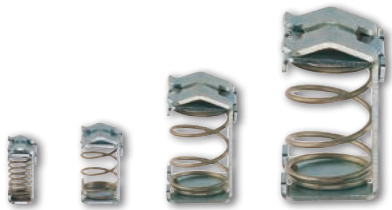


fasis WST

Shielded cable terminals & accessories

Shielded cable terminals *fasis* WST ...

for mounting on busbar
10 x 3 mm

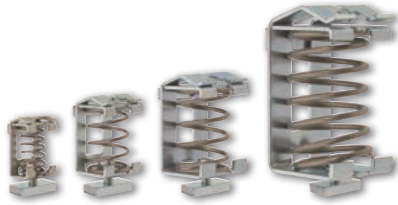


Description	Type	Part No.	P.U.
Shielded cable terminals <i>fasis</i>			
8 mm	WST 8	Z2.803.3010.0	10
13.5 mm	WST 13.5	Z2.803.3110.0	10
20 mm	WST 20	Z2.803.3210.0	10
32 mm	WST 32	Z2.803.3310.0	10

Technical data	WST 8	WST 13.5	WST 20	WST 32
Width / length / height [mm]	13 x 18 x 26	19 x 22 x 32	24 x 27 x 40	36 x 32 x 64
Connectible cable diameter	3 - 8 mm	4 - 13.5 mm	10 - 20 mm	15 - 32 mm

Shielded cable terminals *fasis* WST C

for mounting on C-profile



Description	Type	Part No.	P.U.
Shielded cable terminals <i>fasis</i>			
8 mm	WST 8 / C	Z2.803.4010.0	10
13.5 mm	WST 13.5 / C	Z2.803.4110.0	10
20 mm	WST 20 / C	Z2.803.4210.0	10
32 mm	WST 32 / C	Z2.803.4310.0	10

Technical data	WST 8 / C	WST 13.5 / C	WST 20 / C	WST 32 / C
Width / length / height [mm]	13 x 18 x 26	19 x 22 x 32	24 x 27 x 40	36 x 32 x 64
Connectible cable diameter	3 - 8 mm	4 - 13.5 mm	10 - 20 mm	15 - 32 mm
Mounting screw	M 4	M 4	M 4	M 4

Shielded cable terminals *fasis* WST D

for mounting on
mounting plate

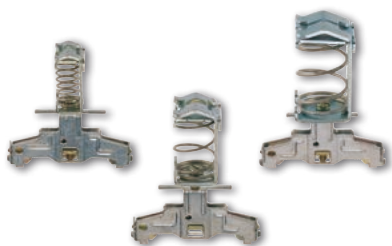


Description	Type	Part No.	P.U.
Shielded cable terminals <i>fasis</i>			
8 mm	WST 8 / D	Z2.803.5010.0	10
13.5 mm	WST 13.5 / D	Z2.803.5110.0	10
20 mm	WST 20 / D	Z2.803.5210.0	10
32 mm	WST 32 / D	Z2.803.5310.0	10

Technical data	WST 8 / D	WST 13.5 / D	WST 20 / D	WST 32 / D
Width / length / height [mm]	13 x 18 x 26	19 x 22 x 32	24 x 27 x 40	36 x 32 x 64
Connectible cable diameter	3 - 8 mm	4 - 13.5 mm	10 - 20 mm	15 - 32 mm
Mounting screw	M 4	M 4	M 4	M 4

Shielded cable terminals *fasis* WST .../T35

for mounting on TS 35
mounting rail

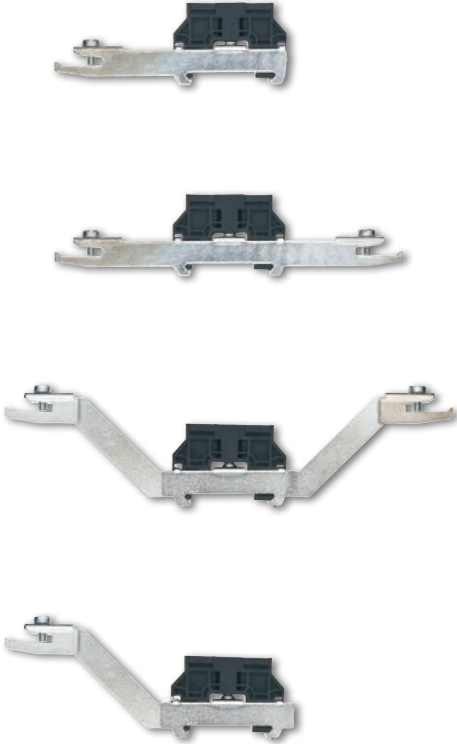


Description	Type	Part No.	P.U.
Shielded cable terminals <i>fasis</i>			
8 mm	WST 8 / TS 35	Z2.803.6010.0	10
13.5 mm	WST 13.5 / TS 35	Z2.803.6110.0	10
20 mm	WST 20 / TS 35	Z2.803.6210.0	10

Technical data	WST 8	WST 13.5	WST 20
Width / length / height [mm]	13 x 52 x 54	19 x 52 x 60	24 x 52 x 68
Connectible cable diameter	3 - 8 mm	4 - 13.5 mm	10 - 20 mm



Busbar support *fasis* WST



Description	Type	Part No.	P.U.
Busbar support <i>fasis</i>			
Busbar support (one-side), tin-plated steel	WE SH 1/35	Z5.515.3310.0	20
Busbar support (two-sided), tin-plated steel	WE SH 2/35	Z5.515.3410.0	20
Busbar support (two-sided), tin-plated steel	WE SH 3/35	Z5.519.0310.0	25
Busbar support (one-side), tin-plated steel	WE SH 4/35	Z5.519.0410.0	25
Busbar support plastic, black	WST H 10x3	Z1.908.0253.0	20

Accessories *fasis* WST



Description	Type	Part No.	P.U.
Accessories <i>fasis</i> WST			
Connection Terminal, bright	WAK 35/2	30.494.4121.0	50
Connection Terminal, black	WAK 35/2 SW	30.494.4021.1	50
Busbar, tin-plated copper	L = 1 m 9813M SN 10x3	98.290.1000.0	20



wieland

Headquarters:
Wieland Electric GmbH
Brennerstraße 10 – 14
96052 Bamberg, Germany

Sales Center:
Wieland Electric GmbH
Benzstraße 9
96052 Bamberg, Germany

Phone +49 951 93 24-0
Fax +49 951 93 24-198
www.wieland-electric.com
info@wieland-electric.com

Industrial technology

Solutions for the control cabinet

- DIN rail terminal blocks
 - Screw, tension spring or push-in connection technology
 - Wire cross sections up to 240 mm²
 - Numerous special functions
 - Software solutions interfacing to CAE systems
- Safety
 - Safe signal acquisition
 - Safety switching devices
 - Modular safety modules
 - Compact safety controllers
 - Application consulting and training
- Network engineering and fieldbus systems
 - Remote maintenance via VPN industrial router and VPN service portal
 - Industrial Ethernet switches
 - PLC and I/O systems, standard and increased environmental conditions
- Interface
 - Power supply units
 - Overvoltage protection
 - Coupling relays, semiconductor switches
 - Timer relays, measuring and monitoring relays
 - Analog coupling and converter modules
 - Passive interfaces

Solutions for field applications

- Decentralized installation and automation technology
 - Electrical installation for wind tower
 - Fieldbus interfaces and motor starters
- Connectors for industrial applications
 - Rectangular and round connectors
 - Aluminum or plastic housings
 - Degree of protection up to IP68
 - Current-carrying capacity up to 100A
 - Connectors for hazardous areas
 - Modular, application-specific technology

PC board terminals and connectors

- Screw or spring clamp connection technology
- Spacings: 3.5mm to 10.16mm
- Reflow or wave soldering process

Building and installation technology

- Building installation systems
 - Main power supply connectors IP20/IP65...IP68
 - Bus connectors
 - Low-voltage connectors
 - Power distribution system with flat cables
 - Distribution systems
 - Bus systems in KNX, LON and wireless technology
 - DIN rail terminal blocks for electrical installations
 - Overvoltage protection

Our subsidiaries



USA
Wieland Electric Inc.
North American Headquarters
2889 Brighton Road
Oakville, Ontario L6H 6C9
Phone +1 905 8298414
Fax +1 905 829 413
www.wielandinc.com



CANADA
Wieland Electric Inc.
North American Headquarters
2889 Brighton Road
Oakville, Ontario L6H 6C9
Phone +1 905 8298414
Fax +1 905 829 413
www.wieland-electric.ca



GREAT BRITAIN
Wieland Electric Ltd.
Riverside Business Centre,
Walnut Tree Close
GB Guildford/Surrey GU1 4UG
Phone +44 1483 531213
Fax +44 1483 505029
sales.uk@wieland-electric.com



FRANCE
Wieland Electric SARL.
Le Céramé Hall 6
47, avenue des Genottes
CS 48313,
95803 Cergy-Pontoise Cedex
Phone +33 1 30320707
Fax +33 1 30320717
info.adv@wieland-electric.com



SPAIN
Wieland Electric S.L.
C/ Maria Auxiliadora 2 bajos
E-08017 Barcelona
Phone +34 93 2523820
Fax +34 93 2523825
ventas@wieland-electric.com



ITALY
Wieland Electric S.r.l.
Via Edison, 209
I-20019 Sesto Milanese
Phone +39 02 48 916357
Fax +39 02 48 920685
info.italy@wieland-electric.com



BELGIUM
A TEM-Wieland Electric NV
Bedrijvenpark De Veert 4
B-2830 Willebroek
Phone +32 3 8661800
Fax +32 3 8661828
info.belgium@wieland-electric.com



DENMARK
Wieland Electric A/S
Vallørækken 26
DK-4600 Køge
Phone +45 70 266635
Fax +45 70 266637
sales.denmark@wieland-electric.com



SWISS
Wieland Electric AG
Harzachstrasse 2b
CH-8404 Winterthur
Phone +41 52 2352100
Fax +41 52 2352119
info.swiss@wieland-electric.com



POLAND
Wieland Electric Sp. Zo.o.
Św. Antoniego 8
62-080 Swadzim
Phone +48 61 2225400
Fax +48 61 8407166
office@wieland-electric.pl



CHINA
Wieland Electric Trading
Unit 2703
International Soho City
889 Renmin Rd., Huang Pu District
PRC-Shanghai 200010
Phone +86 21 63555833
Fax +86 21 63550090
info-shanghai@wieland-electric.com



JAPAN
Wieland Electric Co, Ltd.
Three One Building 1F
3-20-5 Shinyokohama
Kouhoku-ku
Yokohama City 222-0033
Phone +81 45 473 5085
Fax +81 45 470 5408
info.japan@wieland-electric.com

Sales Partner:

You can reach us worldwide in more than
40 countries. Find the contact address at:
www.wieland-electric.com



Informational brochures for downloading

For technical details use our eCatalog on our website
at <https://eshop.wieland-electric.com>

Subject to technical modifications!
gesis®, **podis**®, **samos**® are registered
trademarks of Wieland Electric GmbH