



# KAISER

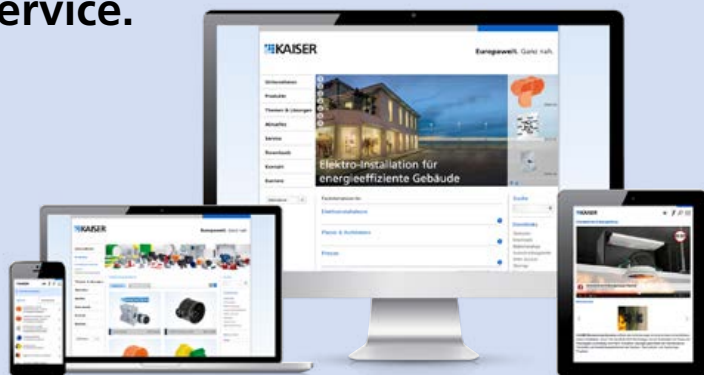
inside  
GROUP



## KAISER Electrical installation systems

Flush-mounting . Cavity wall . Concrete construction . Installation housings . Earthing . Cable glands  
Tools . Energy efficiency . Fire protection . Sound insulation . Radiation protection . Refurbishment


# Service.



**Twenty-four hours a day, KAISER's [www.kaiser-elektro.de](http://www.kaiser-elektro.de) website** offers the latest information on our products, systems and services. Exciting new KAISER products, together with a varied and attractive offer of information:

- Online product catalogue with many functions for everyday tasks
- Download and request brochures, catalogues, installation instructions and much more
- Information about seminars, trade fairs and events
- Technical application advice
- Marketing and service numbers
- Sources of supply
- Article master data and prices
- Tenders

## One picture is worth more than 1000 words.

For all the products near to which you see the  icon, on our [www.kaiser-elektro.de](http://www.kaiser-elektro.de) website and our [www.youtube.de/kaiserelektro](http://www.youtube.de/kaiserelektro) channel, we present informative films which show the installation and function of many products and system solutions. The QR codes give you fast, easy access via your smartphone. Try them out! You can find the QR codes in our catalogues and brochures.



## KAISER App. The latest information, always available.

Even when you are travelling, the KAISER app provides you with all the information you need about our products, new developments and company. The contents were prepared especially for use on mobile devices such as smartphones or tablets.

Available free of charge for Apple iOS in the AppStore, and for Android via GooglePlay.





Improved quality of life instead of noise.

## Flush-mounting sound insulation box.

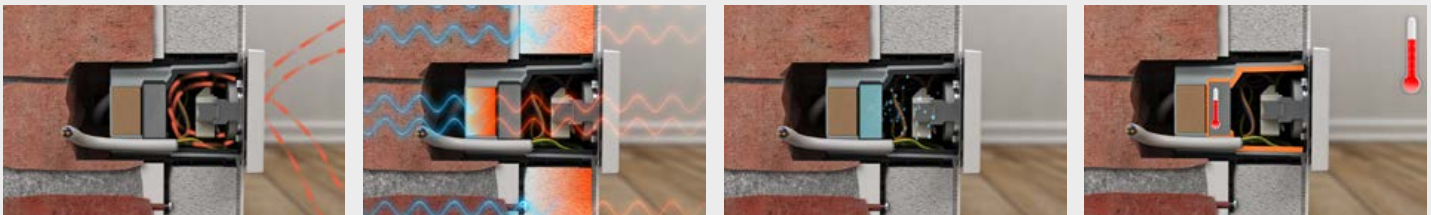
**Sound insulation box** for use in masonry walls with increased demands on sound protection. The sturdy box body with additional sound protection sheathing reduces sound transfer to neighbouring rooms. This retains the wall's sound protection function as if there were no installation boxes and no weak points in the wall.



Perfect insulation and moisture regulation.

## Internal insulation box.

**One-gang junction box** for electrical installations for the permanently safe and heat bridge-free installation of switches and other devices in internally-insulated external walls. For an optimal indoor climate with proven protection against moisture damage. For use in many internal insulation systems.

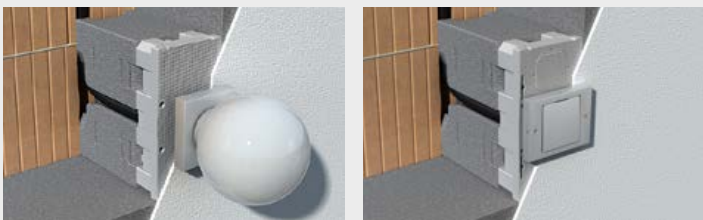




Heat bridge-free electrical installation in externally-insulated facades.

## System equipment carrier.

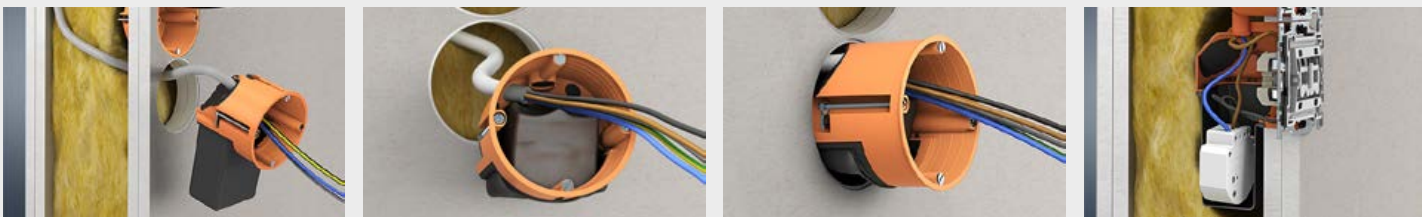
The new **system equipment carrier** is designed so that it integrates perfectly in the external insulation and becomes part of the composite thermal insulation system. This means that no heat bridges can arise. Ideal for the permanent fixing of external luminaires, motion detectors, sockets, door communication systems and much more. Weight-bearing loads up to 10 kg are not a problem.



Flexible installation space. Fast installation.

## Electronics box ECON® Flex.

**Air-tight electronics box ECON® Flex** with ECON® technology for energy-efficient electrical technology in accordance with EnEV and for installation under clean room or enhanced hygiene conditions. Fast installation is ideal for modernising or expanding existing installations. The flexible tunnel allows fast wall installation and creates generous installation for electronic components, cable reserves and terminals.





## Airtight installation of LED built-in luminaires. **Installation housing ThermoX® LED.**

The installation housing ThermoX® LED is available in three new sizes and with new functions. Now there are housings with an installation depth of 70 or 95 mm and with a ceiling exit of 70 or 81 mm diameter.

Innovative expanding pockets guarantee a secure fit for the built-in luminaire. Additional cable entries for sheathed cables ensure greater flexibility during installation.



### DESIGN PLUS

powered by: **light+building**



**Easy with the system:** An overall programme consisting of various systems is available for the installation of luminaires, displays and loudspeakers in insulated hollow ceilings. They protect the surrounding material (moisture barrier foil, insulation, etc.) against the high operating temperatures of luminaires and create an air-tight closure. The ThermoX® system is preferred for the installation of halogen luminaires. For LED luminaires the ThermoX® LED system is used for the installation of rigid and swivelling LED luminaires. The EnoX® system provides sufficient space for the fitting of displays, loudspeakers or other devices and can be used, air-tight, in insulated hollow ceilings or walls.





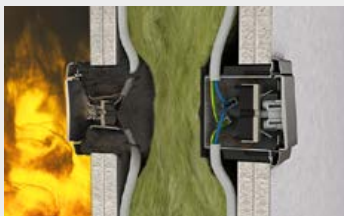
## For solid construction fire-protection walls. **Flush-mounting fire-protection box.**

In solid construction EI30-EI120 fire-protection walls, the fire-protection box maintains the fire-resistance duration for integrated electrical installations. Even if the minimum required wall thickness of 60 mm is not reached in single-sided or even directly-opposing installation, the flush-mounting fire-protection box ensures safe and smokeproof room separation.



## For safe classes up to EI120. **Cavity wall box HWD 90.**

Cavity wall box HWD 90 for EI30-EI120 fire-protection walls. Suitable for many types of wall construction, with or without suitable wool. In addition to the fire-protection characteristics, it also maintains the sound-protection characteristics of the relevant wall. This means that it retains not only all the comfortable features of the relevant wall construction but also guarantees all the safety requirements for use in escape routes, in this way helping to save lives.

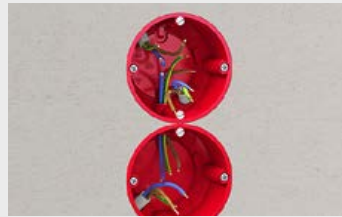




For safe classes up to EI90.

## Fire-protection box HWD 68.

In fire-protection walls EI30-EI90, **fire-protection boxes HWD 68** maintain the fire-resistance duration when electrical installations are fitted. In the event of a fire, an integrated fire-retardant coating quickly and reliably closes the installation opening and prevents the spreading of flames and smoke gases. Toolless cable entry, a cut hole diameter of 68 mm and the easy combination of one-gang and one-gang junction boxes contribute to fast, easy installation.



Stay flexible. Easy, safe, all the time.

## Ceiling penetration sealing systems DS 90/74 mm and DS 90/120 mm.

**KAISER ceiling penetration sealing systems 90/74 mm and DS 90/120 mm** guarantee secure maintenance of the ceiling's fire-resistance class of EI30-EI90. They efficiently prevent the spreading of fire and smoke gases for entries of cable and electrical installation conduits through concrete or cellular concrete ceilings. At all times, their innovative construction makes possible easy, toolless, fast retrofitting or removal of cabling.





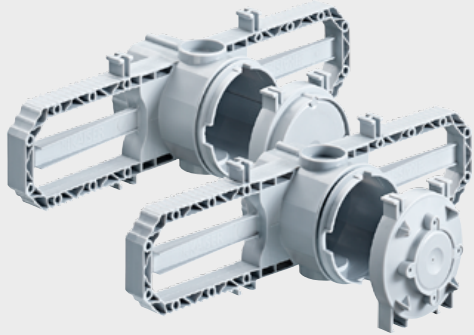
Prevents the spreading of fire and smoke gases.

## Fire-protection housing FlamoX®.

**FlamoX® installation housings** for luminaires and loudspeakers protect life and property in the event of a fire. The integrated fire-retardant coating ensures that the housings maintain ceiling fire-resistance class F30 (E130) when luminaires and loudspeakers are fitted in fire-protection ceilings. They prevent the spreading of fire and smoke gases, securing escape routes in buildings. FlamoX® fire-protection housings provide certified protection and are easy, safe and reliable to install.







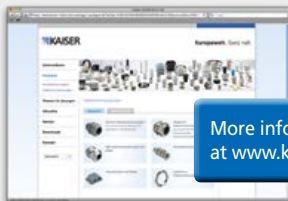
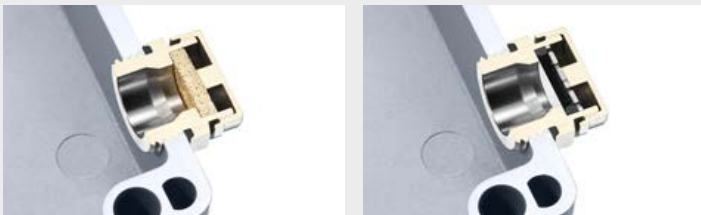
For attaching to the reinforcement.  
**Prefix® concrete building box.**

Concrete building boxes with Prefix® installation technology and two integrated front parts ensure an additional improvement during fitting to the formwork. The Prefix concrete building boxes can be pre-fitted using spring-loaded installation clamps. A peripheral, pronounced corrugated profile along the installation clamps for use with tie wires prevents slipping during fixing.



Prevention of the formation of condensation by means of pressure and temperature compensation.  
**AGRO pressure balance and drainage elements.**

High humidity, differences in temperature and pressure often result in condensation in closed housings. The installation of **AGRO pressure balance elements** ensures optimal pressure compensation and constant ventilation to minimise condensation. Even with a very wide range of environmental conditions, they make possible efficient drainage and safe operation of the installation.



More information can be found at [www.kaiser-elektro.de](http://www.kaiser-elektro.de)



Complete catalogue "Cable Glands 4.0"

# NEW

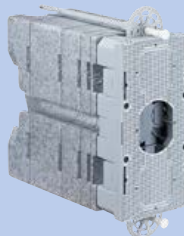
## Innovations



Flush-mounting sound insulation box.



Internal insulation box.



System equipment carrier.



Electronics box ECON® Flex.



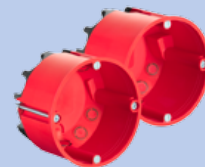
Installation housing ThermoX® LED.



Flush-mounting fire-protection box.



Cavity wall box HWD 90.



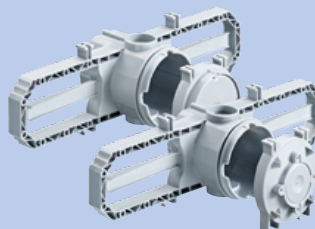
Fire-protection box HWD 68.



Ceiling penetration sealing systems DS 90/74 mm and DS 90/120 mm.



Fire-protection housing FlamoX®.



Prefix® concrete building box.



AGRO pressure balance and drainage elements.

### KAISER GmbH & Co. KG

Ramsloh 4 · 58579 Schalksmühle  
GERMANY

Tel. +49 (0)23 55/809-0 · Fax +49 (0)23 55/809-21

[www.kaiser-elektro.de](http://www.kaiser-elektro.de) · [info@kaiser-elektro.de](mailto:info@kaiser-elektro.de)

