



ALWAYS IN MOVEMENT

# CLADDING LIFTERS

MODELS: MTCL6625DC3 & MTCL810TDC3

Install roof and wall panels easily with these versatile models from Wood's Powr-Grip, capable of handling loads up to 700 lbs (320 kg).



## Adjustable Vacuum Pads

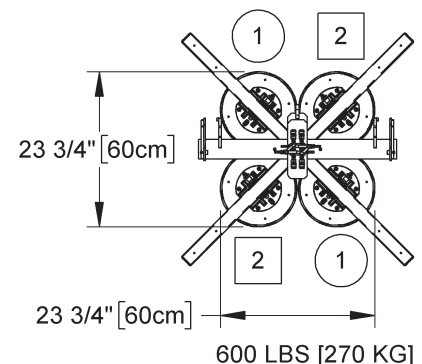
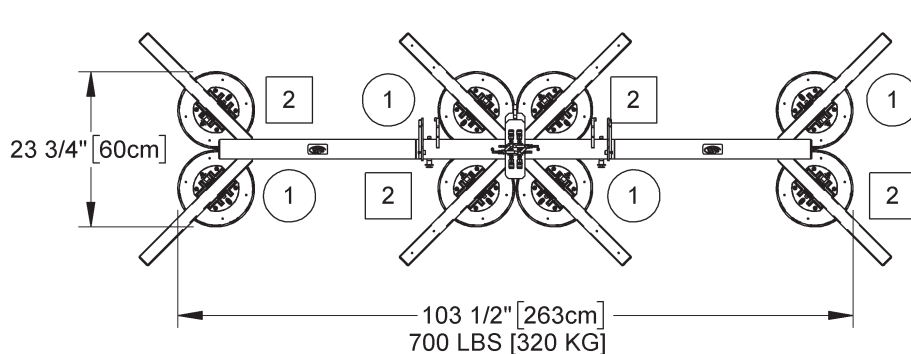
Get the best grip on loads of various shapes and sizes by moving pad mounts as needed.

## Pad Frame Extensions

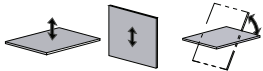
Install tool-free for jobs that require handling extra-long panels!

## Intelli-Grip® Technology

This WPG-exclusive technology oversees power and vacuum systems, increasing productivity and improving safety. Download the Intelli-Grip App to monitor the lifter from a distance!



Model MTCL810TDC3 shown here.

Model	MTCL6625DC3	MTCL810TDC3
Maximum Load Capacity	600–700 lbs [270–320 kg] (variable - see page 4)	600-700 lbs [270-320 kg] (variable - see page 3)
Standard Pad Spread	Minimum Width: 17" [43 cm] Maximum Width: 56" [142 cm] Minimum Length: 37" [94 cm] Maximum Length: 195-3/4" [497 cm]	Minimum Width: 23-3/4" [60 cm] Maximum Width: 39-3/4" [101 cm] Minimum Length: 23-3/4" [60 cm] Maximum Length: 179-1/2" [456 cm]
Number/Size of Vacuum Pads	4-6 (variable) / 6" x 25" [15 cm x 64 cm]	4-8 (variable) / 10" [25 cm] diameter with replaceable sealing rings
Lifter Weight	360 lbs [164 kg] (maximum) (245 lbs [112 kg] w/out pad frame extensions. See page 4.)	360 lbs [164 kg] (maximum) (253 lbs [115 kg] w/out pad frame extensions. See page 3.)
Load Movement	Manual tilt, 90° between upright and flat, with hydraulic damping and automatic latching in the upright and flat positions (when desired) 	
Standard Operating Power	12 volts DC, 10 amps	

## STANDARD FEATURES

### Intelli-Grip® Technology

Available exclusively from Powr-Grip®! Actively monitors power and vacuum systems to increase safety and productivity, using LCD-screen messages, diagnostic codes and other features

### Dual Vacuum System

Features two independent air-line circuits to reduce risk of workplace accidents

### Battery and Charger

Provide independent, rechargeable power source for cord-free lifter operation in any location; on-board charger features status indicator and automatic shut-off

### Battery Gauge

Shows energy level in real time, to help determine when charging is needed

### Notification Buzzer and Strobe Light

Alert operator of problems with power or vacuum system, with various patterns of sound and light to indicate severity; back-up battery provides independent power for buzzer

### Green Lift Light

Provides visual assurance to know when vacuum is sufficient for lifting

### Vacuum Gauges

Feature green and red zones to clearly indicate whether vacuum levels are sufficient for lifting

### Vacuum Line Filters

Prevent liquid and other contaminants from damaging the vacuum generating system

### Vacuum Reserve Tanks

Increase battery run-time by reducing pump cycles needed to maintain vacuum

### Spring-Mounted Vacuum Pads

Automatically adjust to match the angle of load surfaces, easing attachment

### Movable Pad Mounts

Allow vacuum pads to be moved or removed without tools, adapting the lifter to various load sizes (MTCL810TDC3 Only)

### Sliding Pad Mounts

Accommodate various load sizes by sliding to different locations on the pad frame. These mounts can also be rotated or removed, when necessary. (MTCL6625DC3 Only)

## STANDARD FEATURES

### Pad Frame Extensions

Connect without tools to support roof panels up to 60' [18 m]

### Replaceable Pad Seals

Accommodate high ribs, standing seams and panel contours up to 3/8" [10 mm] in depth (MTCL6625DC3 Only)

### Replaceable Pad Rings

Accommodate moderately sized ribs and contours up to 1/8" [3 mm] in depth. No tools required! (MTCL810TDC3 Only)

### Two-Action, Blow-Off Release

Uses two separate buttons to avoid accidental release, and reverses airflow to quickly release loads without after-stick

## AVAILABLE OPTIONS

### Remote Control System

Controls attach, release and other powered functions up to 250' [76 m] away for installing insulated metal panels in multi-story buildings

### VPFS10T Conversion Kit (58371AA)

Enables VPFS625 equipped lifters to use VPFS10T vacuum pads (MTCL6625DC3 Only)

### VPFS625 Conversion Kit (58386)

Enables VFS10T equipped lifters to use VPFS625 vacuum pads (MTCL810TDC3 Only)

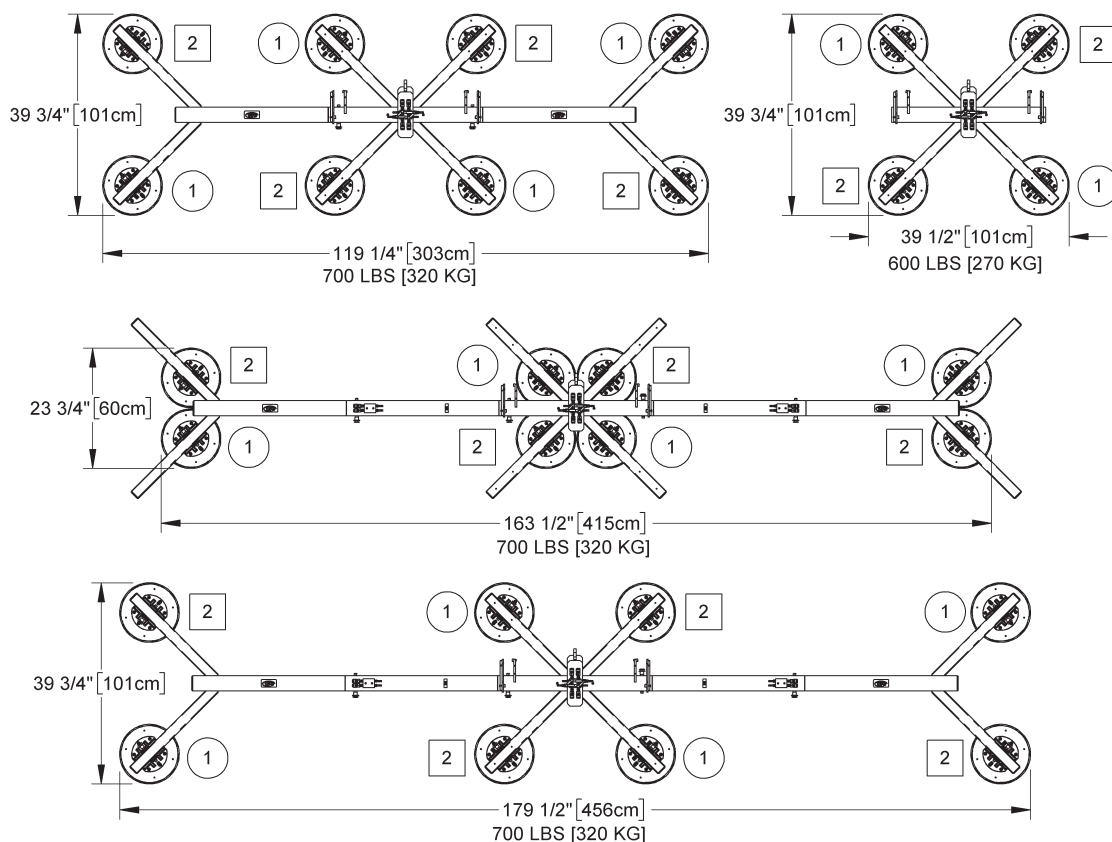
### Alternative Pad Compounds

Specially designed for heat resistance, marking resistance, coated surfaces and other purposes

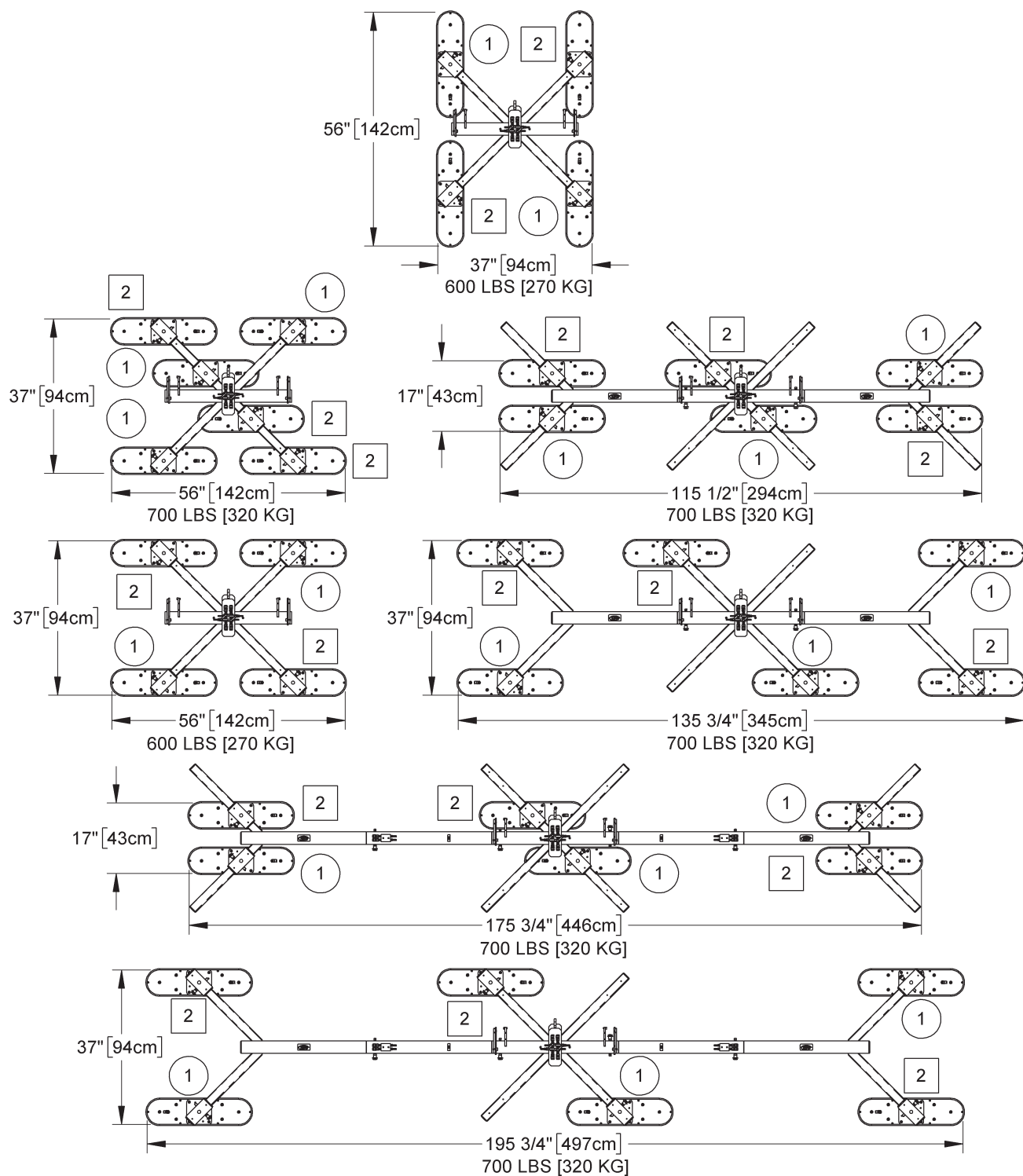
## DESIGN STANDARDS

**ASME B30.20 (BTH-1 Design Category "B", Service Class "0"):** Industry standards established by the American Society of Mechanical Engineers (ASME) and published by the American National Standards Institute (ANSI)

**CE:** Regulatory standards for health and safety required in the European Union



Model MTCL810TDC3 shown here.



Model MTCL6625DC3 shown here.



JLMTEKNIK IS A PROUD DISTRIBUTOR OF WOOD'S POWR-GRIP® PRODUCTS