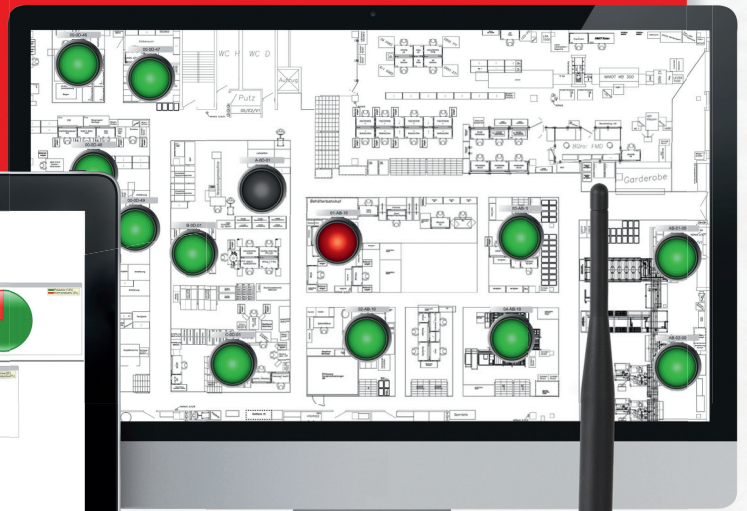
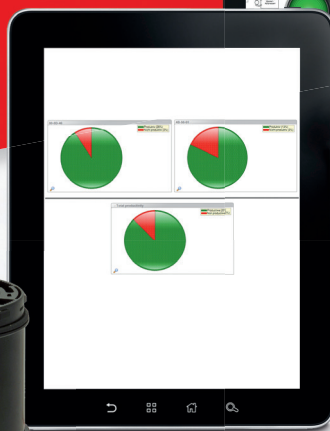




Part Numbers
SmartMONITOR



1. WIRELESS NETWORKING

STATUS MONITORING

This hardware monitors up to eight different statuses and transmits them to the receiver.

COUNTING MODULE

This hardware monitors up to six different statuses and counts a quantity pulse. This information is transmitted to the receiver.

CONTROLLING A SIGNAL TOWER

In combination with the software, this hardware allows the actuation of a signal tower or an external application (start machine, stop machine etc.).

TRANSMITTER



WIN slave
Order no. **860 640 02**



WIN transmitter
Order no. **860 640 05**



WIN slave performance
Order no. **860 640 12**



WIN transmitter performance
Order no. **860 640 15**



WIN slave control
Order no. **860 640 22**



WIN transmitter control
Order no. **860 640 25**

RECEIVER



WIN ethernet master
Order no. **860 000 06**



WIN ethernet receiver
Order no. **860 000 07**

2. SIGNAL TOWER

SIGNAL ELEMENTS (UP TO A MAXIMUM OF 4)



Buzzer
Order no. **645 800 75**



2 tone siren
Order no. **645 870 75**



LED Permanent light red
Order no. **644 100 75**



LED Permanent light green
Order no. **644 200 75**



LED Permanent light yellow
Order no. **644 300 75**



LED Permanent light clear
Order no. **644 400 75**



LED Permanent light blue
Order no. **644 500 75**



TwinLIGHT red
Order no. **647 110 75**



TwinLIGHT yellow
Order no. **647 310 75**



TwinLIGHT green
Order no. **647 210 75**



TwinLIGHT clear
Order no. **647 430 75**



TwinLIGHT blue
Order no. **647 510 75**

Base mounting

Tube mounting

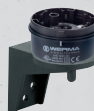
Bracket mounting



Terminal element
Order no. **640 800 00**



Terminal element +
Base with integrated
tube
Order no.
**640 810 00 +
975 840 10**



Terminal element +
Bracket for base
mounting
Order no.
**640 800 00 +
960 000 02**

PRE-ASSEMBLED SIGNAL TOWER

Base mounting

Tube mounting



LED Permanent
light
Order no.
649 240 02



LED Permanent
light
Order no.
649 240 04



TwinLIGHT
Order no.
649 000 01



LED Permanent
light
Order no.
649 240 05



LED Permanent
light
Order no.
649 240 06



TwinLIGHT
Order no.
649 000 02

