



Cutting | Bending | Welding | Automation



TP65SD

■ Flagship Series Compound Tube Fiber Laser Cutting Machine With Drilling and Tapping ■

Company Culture



MISSION

Intelligent manufacturing changes future



VALUES

Customer-focused and employee-based



VISION

Become a respectable enterprise in the global metal forming equipment field

Company Profile



19

Global Branches



100+

Countries Covered



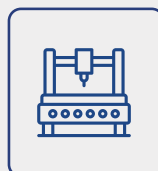
4

Manufacturing Bases



30+

Global Service Centers



8,000+

Annual Capability



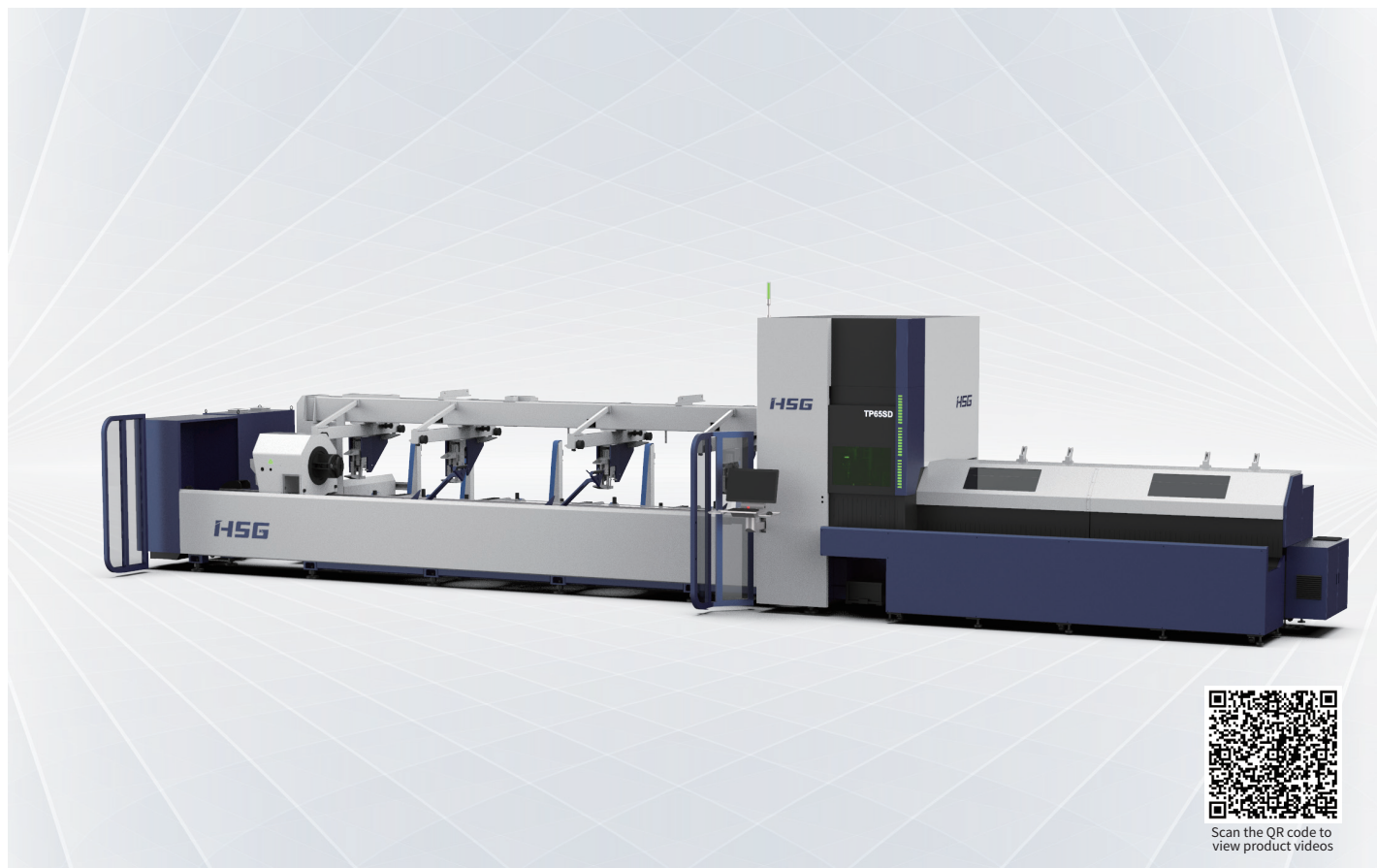
135,000m²

Occupied Area



TP65SD 3000-6000W

Flagship Series Compound Tube Fiber Laser Cutting Machine With Drilling and Tapping



Technical Parameters

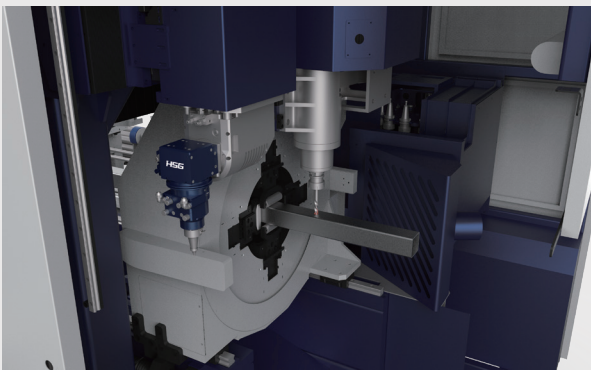
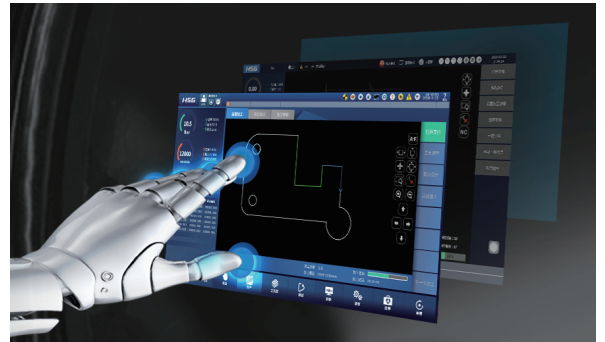
Technical Parameter	TP65SD
Power	3000-6000W
Rotating Speed of Chucks	120r/min
No-load Speed	120m/min
Acceleration	1.2G
X/Y-axis Positioning Accuracy	$\pm 0.03\text{mm/m}$
X/Y-axis Repositioning Accuracy	$\pm 0.03\text{mm}$
*Tailing Length	Tailings in Double-chuck Clamping Model $\geq 220\text{mm}$
Cutting Capacity	$\phi 12\text{-}254\text{mm}$ (If change the claw can achieve max. 273mm) $\square 20\text{*}20\text{-}200\text{*}200\text{mm}$ Side length $\leq 200\text{mm}$
Weight of Single Tube	200kg
Dimensions with Semi-Auto (L*W*H)	12500*4700*2600mm
The range of pipe material	1000-6500mm

* Machine appearance, technical parameters, function description, data comparison shown in this page are from HSG in-house laboratory.

All testing results and experimental data shall be subject to real machine.

HSG-X Bus Control System

- Simple Interface
Clear interface is convenient for users operating and shows cutting data in real time to save time and costs.
- Functional Integration Control
A number of core functions are showed centrally on the interface to reduce operating steps and users can easily learn to operate.



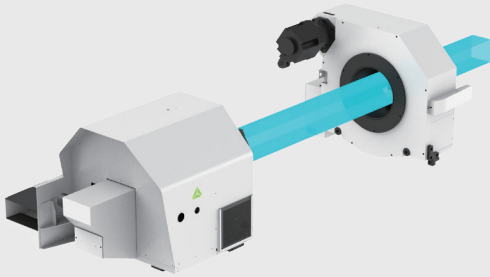
Efficient Production: Cutting + Drilling + Tapping

- Integrated laser cutting, hot melt drilling and tapping, for molding at once to reduce processing processes, save labor, greatly shorten processing time and improve production efficiency

SPEED+ High-speed Tube Cutting Technology

- Using SPEED+ high-speed cutting technology to improve the cutting efficiency of dense small graphics for high-speed tube cutting.
- Note: Chuck Rotation Speed: 120r/min
- Chuck Linkage Speed: 120m/min



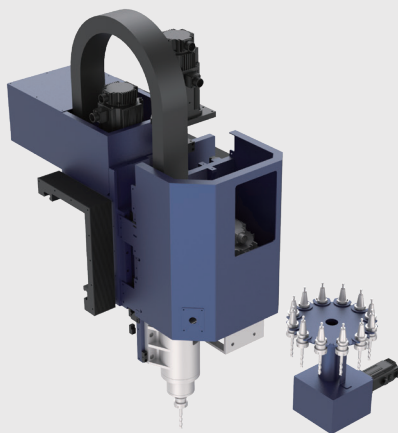
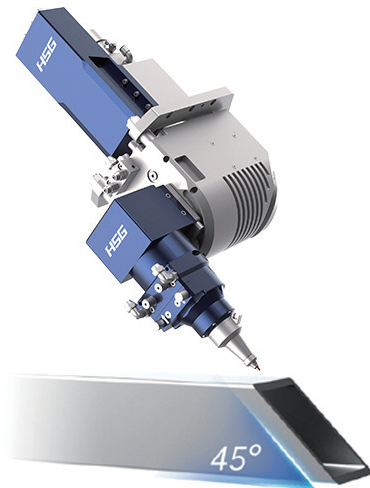


Intelligent Digital Chuck

- The chuck can detect the clamping status and the tube size data to achieve self-adjustment of clamping force.

Beveling Processing

- HSG-LA4 tube beveling tube cutting head to achieve 0-45° beveling cutting.

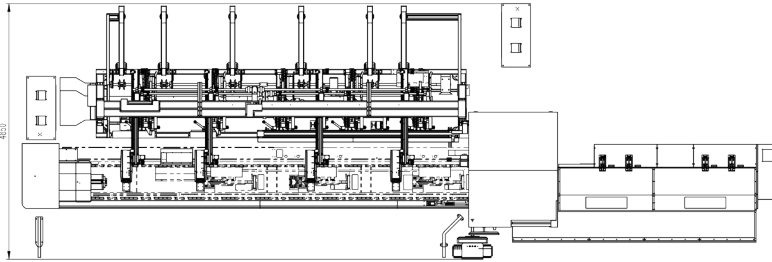
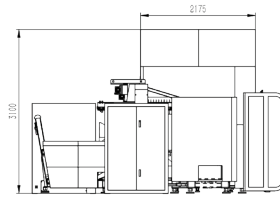
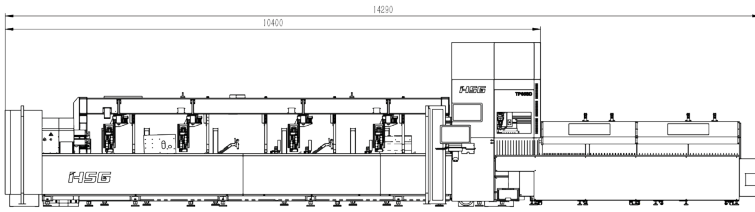


Multiple Apertures Hot Melting -Drilling-Tapping Technique

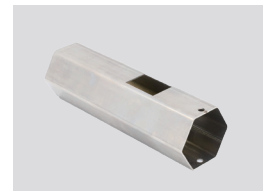
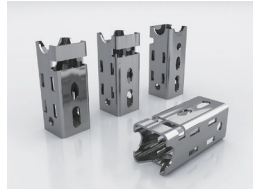
- Self-equipped with tool database to achieve automatic knife shifting.

Machine Foundation

*The marked size has about 10mm error



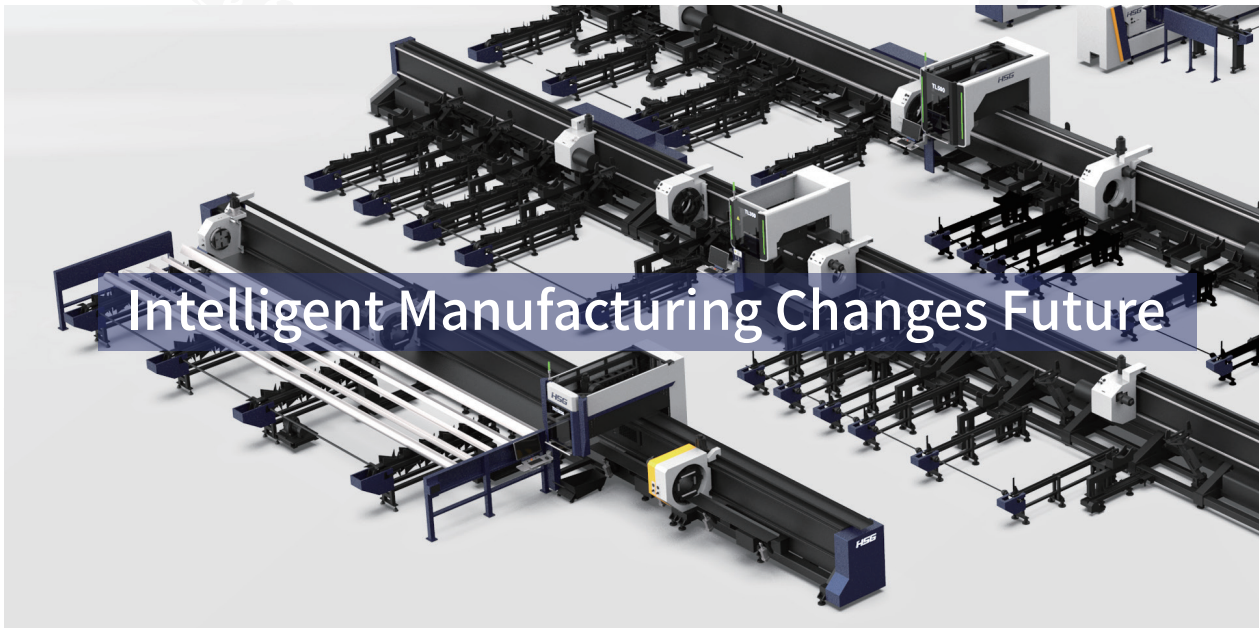
Cutting Samples



Cutting Capacity

Tube Classification	10mm	40mm	70mm	100mm	130mm	160mm	190mm	210mm	240mm	270mm	300mm	330mm	360mm	Diameter
Square Tube	[Progressive bar chart showing capacity up to 210mm]													
Round Tube	[Progressive bar chart showing capacity up to 270mm]													

The actual machines shall prevail and above data & pictures are only for reference.



Intelligent Manufacturing Changes Future



As a global enterprise, HSG sticks to providing professional and convenient service support to customers at home and board



Professional Training

Multiple technical training service and free operation training for customers and dealers in time



Efficient Support

Humanistic service model, online services and 7*24 hotline to offer solutions and assistance



Optimized Transport

Multi-channel transport solutions and professional transport solution team will provide various transport cases for to satisfy the demand of customers and save transports fees



Sufficient Accessories

Highly efficient accessories delivery service, multiple network inventory jointly responds to accessories demand to shorten customer's waiting times and accelerate production



Careful Services

Domestic door-to-door service and free proofing, global 100+dealers provide efficient and convenient services



Intelligent Manufacturing Changes Future



Website



Facebook



Youtube

Headquarters Add.: No. 4, Anye Road, Shunjiang Community Industrial Park,
Beijiao Town, Shunde District, Foshan, Guangdong, China
Website: www.hsglaser.com
Email: info@hsglaser.com
Tel: +86 757-66833906