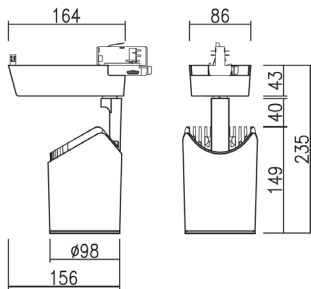


Datasheet

Type: NS72
Itemnr.: 1328300011

Product description

NS72 is a track LED spotlight with a high luminous intensity and a modern design. The product is available in black, white and silver and can be ordered with different accessories. The lamp can be dimmed by using a turning knob placed on the lighting unit. NS72 can be delivered with three different beam angles and can be mounted directly in universal three-phased lighting track systems. The product can be used in several different ways but fits perfectly in exclusive shops, museums, car shops and other show rooms because of the high quality. An accessory can be used in museums to create a special wall-washer effect. NS72 ensures an energy saving on 40-70 % and keeps the maintenance costs on a minimum level.



Technical Data

Lumen	1334lm (14), 1430lm (18) or 2078lm (22)
Beam Angle	23 or 53
Colors Available	Warm white or Neutral white
Color Temperature	Warm white 3000K or Neutral white: 4000K
Color Rendering	CRI80+ (CRI95+ for 18W only)
MacAdam	Step 3 (Step 2 for 18W only)
Color Bin	V6
Consumption	14W, 18W or 22W
Voltage Range	220 ~ 240VAC 50/60Hz
Efficiency	95 LPW (CRI95 80 LPW)
Equal To	NS72 22W = Metal halide HIT 35W
Lifetime LEDs	50K hours at Ta = 25°C (L70) B10
Lifetime driver	50K hours at Ta = 25°C (MTBF) B10
Dimmable	Dimming on NS72 or DALI
IP Code	IP20
Class	2, Double Insulated
Size	Ø98 x H235 x W86 mm
Installation	3 phase track system
Weight	1,6 Kg
IES File	Yes
Warranty	5 years*
Housing	White, black or silver



Shipping

The products are to be delivered in package of 10 pc.

Energy savings up to 79%

Metal halide HIT 35W	➡	NS72 22W
Halogen lamp QR 100W	➡	NS72 18W

Normasym Intl.
Phone +4571995825
hello@normasym.com
www.normasym.com

Normasym is constantly developing and improving its products. All descriptions, illustrations, drawings and specifications in this publication present only general particulars and shall not form part of any contract. The right is reserved to change specifications without prior notification or public announcement. *For more information on warranty see: normasym.com/terms/