

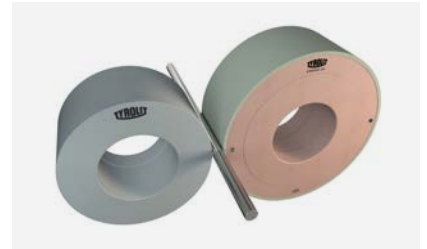
## **STARTEC CG**

Diamond grinding tools with lightweight core  
for centreless through feed grinding

# STARTEC CG

The new STARTEC CG product line is TYROLIT's response to increasing requirements for grinding wheels that can deliver perfectly ground workpieces. STARTEC CG combines the innovative lightweight technology "N-LW" with diamond grit of the highest quality, raising the standard in centreless through feed grinding to a new level. The low weight of the grinding wheels both protects the machine spindle and greatly simplifies handling in production. At the same time, the grinding tools guarantee the best possible surface finish and optimum workpiece roundness. The damping effect of the N-LW core also extends the lifetime of the grinding wheel.

**Application:**  
Centreless through feed grinding



**+ Reduced wheel weight:** The innovative TYROLIT lightweight technology "N-LW" with a density 49% lower than aluminium greatly reduces the wheel weight compared to conventional grinding wheels. This protects the machine spindle, reduces the amount of energy required to drive the grinding wheel and reduces surface flaws.

**+ Individually manufactured:** STARTEC CG diamond grinding wheels are individually manufactured according to customer requirements and are available in all standard specifications. The grinding layer can also be designed for rough and finish grinding in a single pass by combining different grit sizes over the wheel width.



**+ Damping core:** The damping effect of the core makes it possible to use coarser abrasive grit than comparable rival products while delivering the same surface finish. This enables higher stock removal, a much longer lifetime and optimum roundness and straightness.

**+ Complete system solution:** As a system supplier, TYROLIT also offers specially adapted regulating wheels that can be produced in all conventional shapes and dimensions. Mounting and concentric truing of the grinding wheel on the flange provided by the customer completes our package.

## Application example: 1A1 500x400x304,8 Belaghöhe 10mm

Total weight with new N-LW core:

**76,3 kg**

Total weight with bakelite core:

113,58 kg

Total weight with aluminium core:

133,98 kg

**Grinding wheels with N-LW core are therefore 30% lighter than grinding wheels with bakelite core and around 45% lighter than with aluminium core.**

Standard recommendation for rubber bonded regulating wheels for through feed grinding.

**NK120 R1150 - Standard**  
**NK180 R1150 - Fein**

Empfehlung in Kunstharzbindung:  
**CRA100-BR60**

Weitere Spezifikationen bieten wir auf Anfrage an.