

PRIMINER

VERTICAL MACHINING CENTERS



Top price/performance ratio
High-quality components
Numerous options

SIEMENS • HEIDENHAIN • FANUC • FAGOR



MINI CENTER



Delta Center V6L



Delta Center T6/T7



Delta Center V10L



Alpha Center V7L



Alpha Center V9L/V11L



Alpha Center V13L / V15L



VF760 / VF760M



VF900 / VF1100 / VF1300



Power Center V11 / V18



V65HS



V1613HS



Double Column Center
V2317 / V3025 / V3317 / V4025

GÜHRING

BLUM
focus on productivity

LEHMANN

SolidCAM
Machining - The Revolution in CAD

Blaser.
SWISSLUDE

PRIMINER

The Company



Jack Chen | CEO Priminer Company Group
Benjamin Kaehlcke | General Manager, Germany

PRIMINER



We stay up to date

"Only employees which are regular trained and involved in the development of our production process can understand the requirements of present and future as a whole." According to Mr. Kaehlcke GF of Priminer Germany. "This is the case for our German and China team members. We have an intensive exchange program between our two major spots, additional to our permanent training course at our global leading sub-suppliers."

HOW WE DO IT

Consequent QC-management according to international norms, a highly motivated team of specialists, advantages of serial production and reliable top sub-suppliers with global leading positions are columns of our success. An open and result-oriented company culture through all levels is the basement for a permanent high level of our reliability and products.

PRIMINER



Our Team

International, competent, highly motivated and always open for new ideas... This is our team. The cooperate culture is a mirror of these attitudes. Our management has got a "open ear" from bottom to top and we are and we practise flat hierarchy.

PRIMINER Global TEAM

OUR KNOW-HOW FOR YOUR BUSINESS

Technology & Know-how

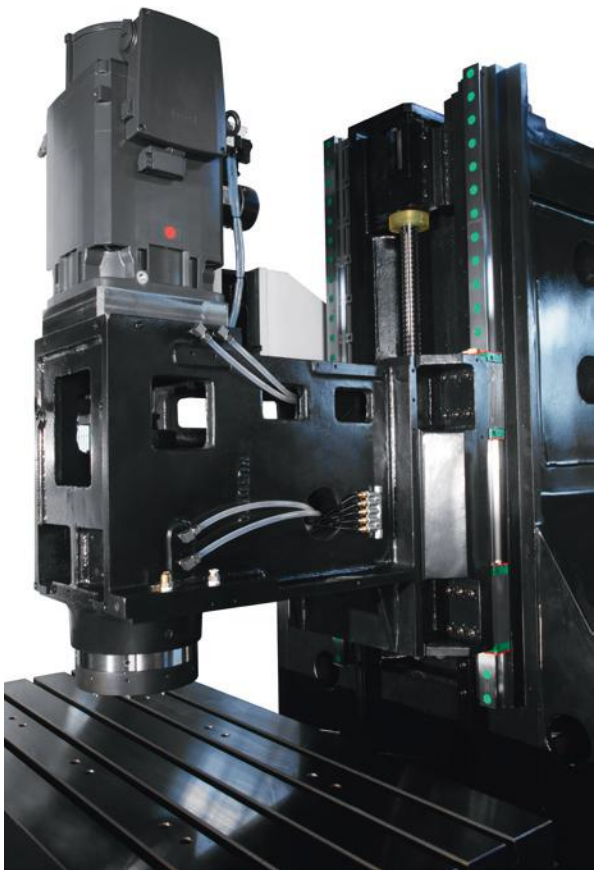
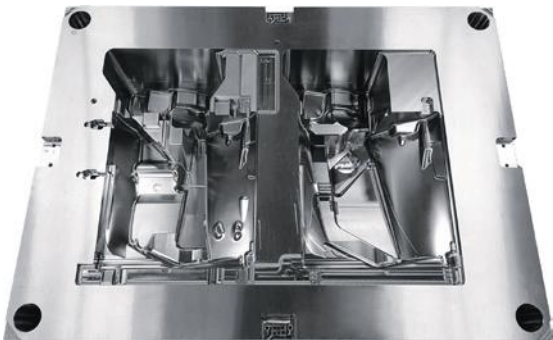
We think and plan the future already now. A growing in-house R&D department with experienced engineers which develop our machine concepts are our warrantor that we are prepared for the upcoming trends of the machine tools business. We are listening to the market. Flexibility in the matter of CNC controllers is for us a must, here we only go with the market leaders. Without any compromise!



VF900 · 1100 · 1300



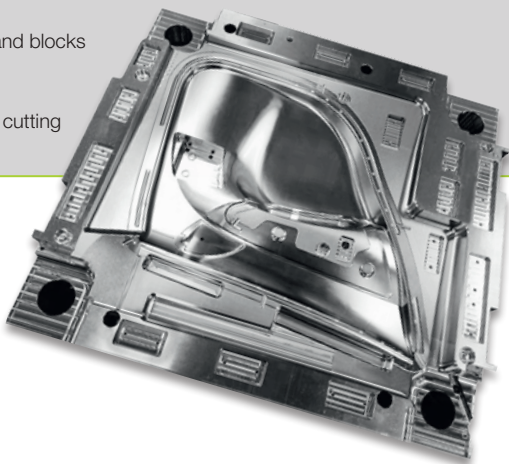
- VF series ultra high performance center is specially designed for high speed and high efficiency machining applications
- Advanced design with reinforced body structure through FEM analysis. VF series offers superb cutting performance and reduced vibration to meet the highest machining demands
- Extra wide machine column and base design ensures the high rigidity during high speed movement
- Motor mounting block cooling circuit (VF1100 & VF1300)
- Coolant through ballscrew (VF1100 & VF1300)
- Linear encoder (option)



Cast iron tempered for stress relief to ensure structural stability without deformation

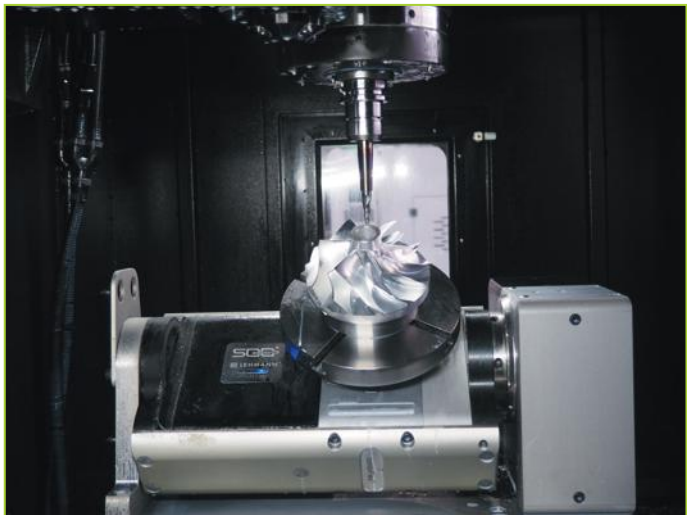
Standard configuration:

- ✓ Fully enclosed splash guard
- ✓ Direct drive spindle 12.000 min⁻¹
- ✓ 24 pocket arm tool changer
- ✓ Two screw type and one chain type (VF 1100/1300)
- ✓ Chain type chip conveyor (VF900)
- ✓ Spindle cooling system
- ✓ Air-conditioned electrical cabinet
- ✓ Motor mounting block cooling circuit (VF1100 & VF1300)
- ✓ Rigid tapping
- ✓ Ethernet, CF card and USB interface
- ✓ Automatic lubrication system
- ✓ Coolant system
- ✓ Oil separator
- ✓ LED working lamp
- ✓ End of program light
- ✓ Electronic handwheel (MPG)
- ✓ Tool box
- ✓ Leveling bolts and blocks
- ✓ Coolant gun
- ✓ Air gun
- ✓ Air blast during cutting
- ✓ User manuals

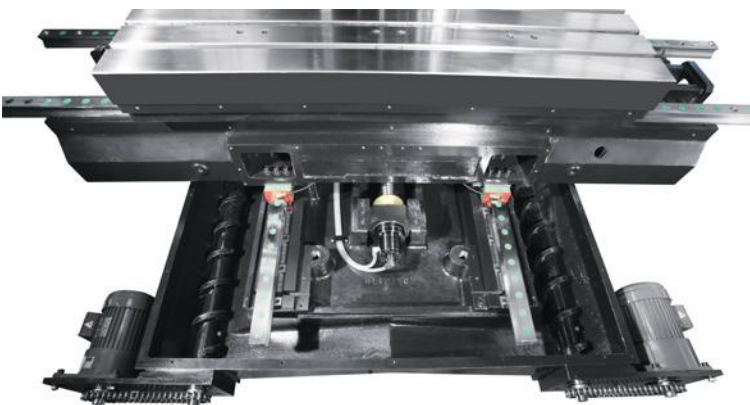


Optional configuration:

- Direct drive spindle 10.000 min⁻¹, BBT50 (VF110 & VF1300)
- Direct drive spindle 15.000 min⁻¹, BBT40
- Motor spindle 20.000 min⁻¹, HSK A63
- CTS coolant through spindle
- Oil cooled ballscrew
- Linear encoder
- 4th axis
- 4/5th axis
- Workpiece probe
- Tool probe



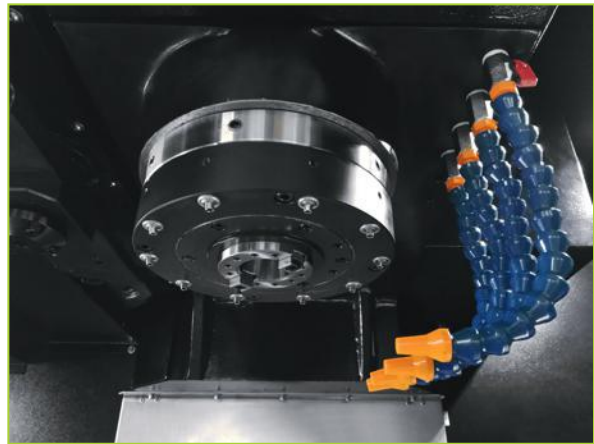
Lehmann 4th & 5th axis



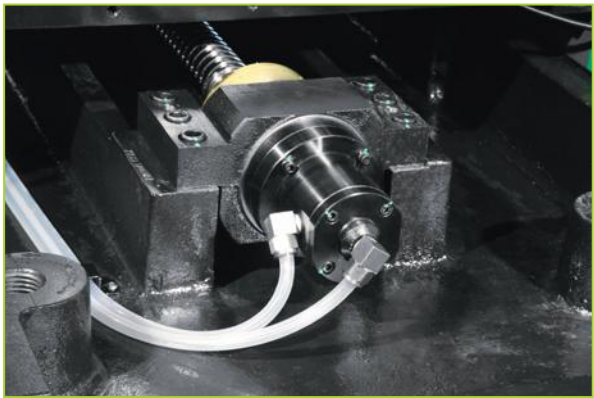
Two screw type chip conveyors in Y-axis (VF110 & VF1300)



HIWIN linear guideways



Coolant water-jet around spindle

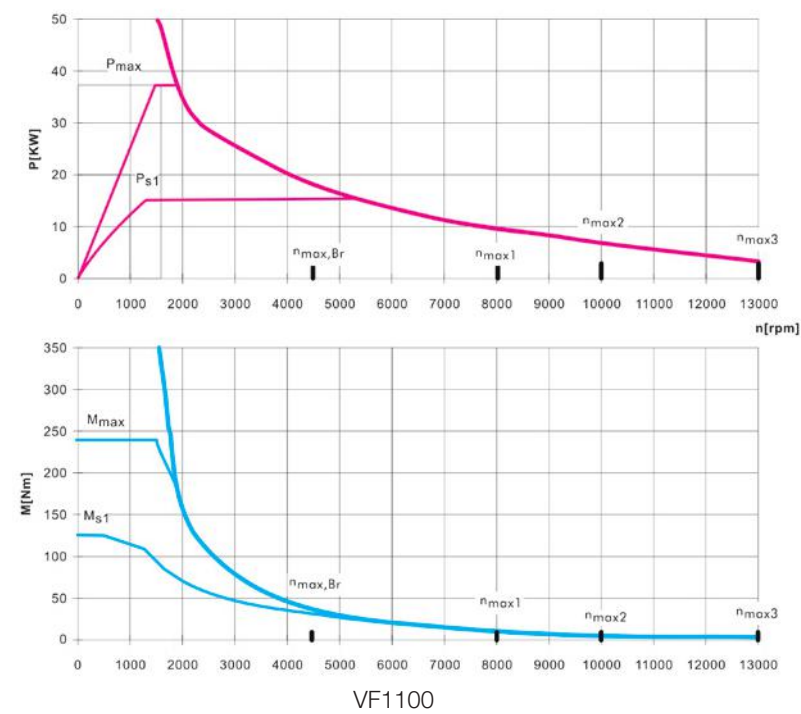


Oil cooled ballscrews (VF1100 & VF1300)

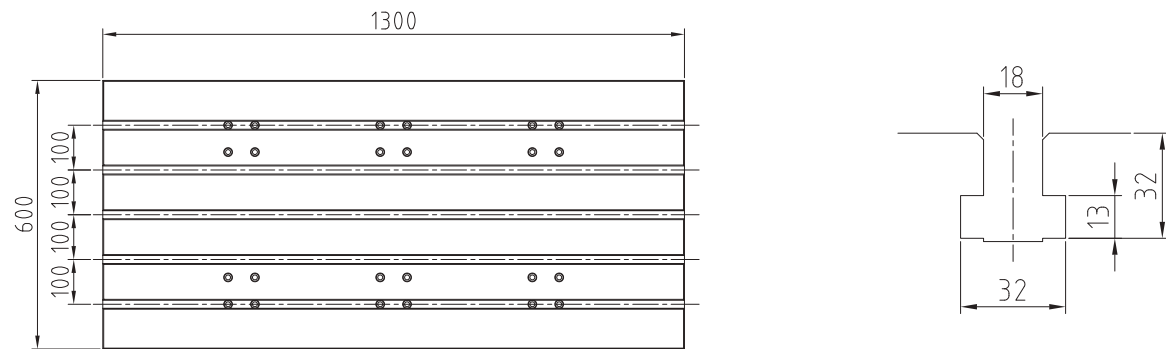
* The above specifications are subject to change without prior notice, no liability for mistakes. Machines may be shown with optional equipment.

* The above specifications are subject to change without prior notice, no liability for mistakes. Machines may be shown with optional equipment.

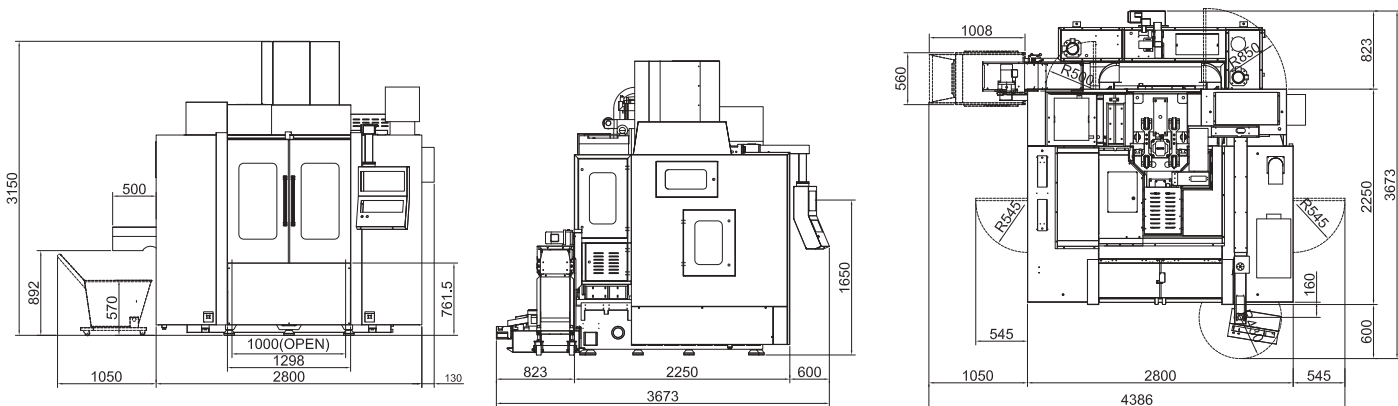
Torque chart for standard Siemens version



Work table (VF1100)



Dimensions (VF1100)



Technical Specifications

Technical Specifications		VF900	VF1100	VF1300
Table				
Table size	mm	1060 x 600	1300 x 600	1500 x 650
T-slot (width x number x distance)	mm		18 x 5 x 100	
Max. load	kg	650	800	1000
Travel				
X/Y/Z Travel	mm	900 / 600 / 600	1100 / 650 / 600	1300 / 650 / 600
Spindle nose to table distance	mm		150 - 750	
Spindle center to column distance	mm	652	697	
Spindle				
Spindle taper	-		SK40 / BBT40 / CAT 40	
Spindle servo motor	kW	9 / 22 Siemens, 11 / 15 Fanuc	15 / 38 Siemens, 15 / 18.5 Fanuc	
Spindle speed	min ⁻¹		12.000	
Feed				
Rapid feed X/Y/Z	m/min		36	
Cutting feed	m/min		1 - 12.000	
Tool changer				
Number of tools	pcs.		24	
Max. tool length	mm		300	
Max. tool diameter	mm		78 (125)	
Max. tool weight	kg		8	
Accuracy (VDI 3441)				
Positioning accuracy (without linear encoder)	mm		0.010	0.012
Positioning repeatability (without Linear encoder)	mm		0.006	0.008
Positioning accuracy (with linear encoder)	mm		0.006	0.008
Positioning repeatability (with linear encoder)	mm		0.004	0.006
Dimensions & weight				
Dimensions	mm	2800 x 2345 x 3000	2930 x 2250 x 3150	3150 x 3100 x 3150
Weight	kg	6000	7500	7800



Cooling unit with CTS



Keyarrow telescopic covers in all axes

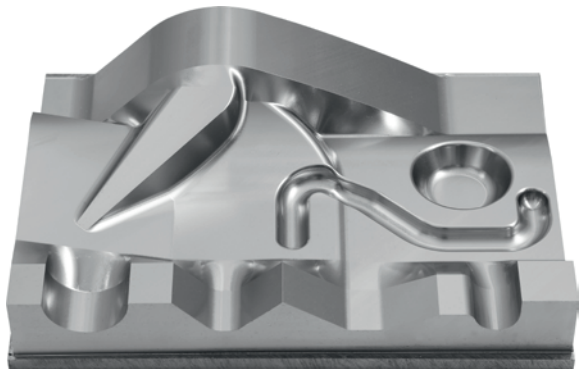
* The above specifications are subject to change without prior notice, no liability for mistakes. Machines may be shown with optional equipment.

* The above specifications are subject to change without prior notice, no liability for mistakes. Machines may be shown with optional equipment.

VF760 · VF760M



- Cast iron is tempered for stress relief to ensure structural stability without deformation
- C3 class ballscrews ensures the highest accuracy and durability
- Pre-tension on all axis minimizes thermal distortion



Technical Specifications		VF760	VF760M
Table			
Table size	mm	900 x 420	
T-slot (width x number x distance)	mm	14 x 3 x 125	
Max. load	kg	350	
Travel			
X / Y / Z Travel	mm	760 / 450 / 520	
Spindle nose to table distance	mm	100 - 620	
Spindle center to column distance	mm	517	
Spindle			
Spindle taper	-	SK 40 / BBT 40 CAT 40	HSK A63
Spindle servo motor	kW	9 / 22 Siemens 11 / 15 Fanuc	20 / 24 Siemens
Spindle speed	min ⁻¹	12.000	20.000
Feed			
Rapid feed X/Y/Z	m/min	48	24
Cutting feed	mm/ min	1-12.000	
Tool changer			
Number of tools	pcs.	24	
Max. tool length	mm	300	
Max. tool diameter	mm	78 (125)	
Max. tool weight	kg	8	
Accuracy (VDI 3441)			
Positioning accuracy (without linear encoder)	mm	0.010	
Positioning repeatability (without linear encoder)	mm	0.006	
Positioning accuracy (with linear encoder)	mm	0.006	
Positioning repeatability (with linear encoder)	mm	0.004	
Dimesions & weight			
Dimensions	mm	2400 x 2120 x 2900	
Weight	kg	4500	

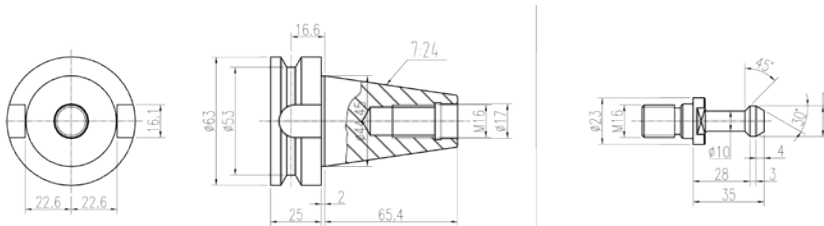
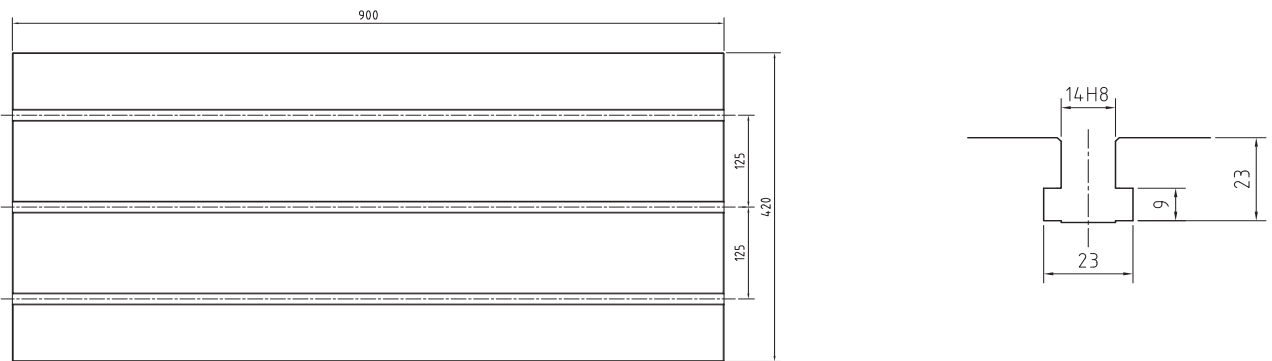
Standard configuration:

- ✓ Fully enclosed splash guard
- ✓ Direct drive spindle 12.000 min⁻¹ (VF760)
- ✓ Motor spindle 20.000 min⁻¹, HSK A63 (VF760M)
- ✓ Spindle cooling system
- ✓ 24 pocket arm tool changer
- ✓ Air-conditioned electrical cabinet
- ✓ Rigid tapping
- ✓ Ethernet, CF card and USB interface
- ✓ Automatic lubrication system
- ✓ Coolant system
- ✓ Oil separator
- ✓ LED working lamp
- ✓ End of program light
- ✓ Electronic handwheel (MPG)
- ✓ Tool box
- ✓ Leveling bolts and blocks
- ✓ Coolant gun
- ✓ Air gun
- ✓ Air blast during cutting
- ✓ User manuals

Optional configuration:

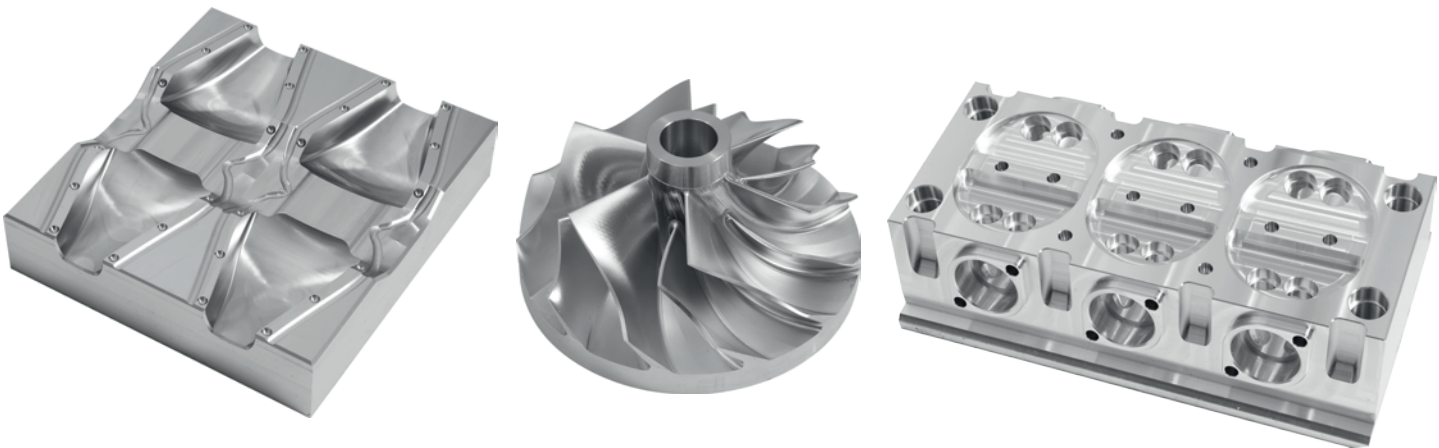
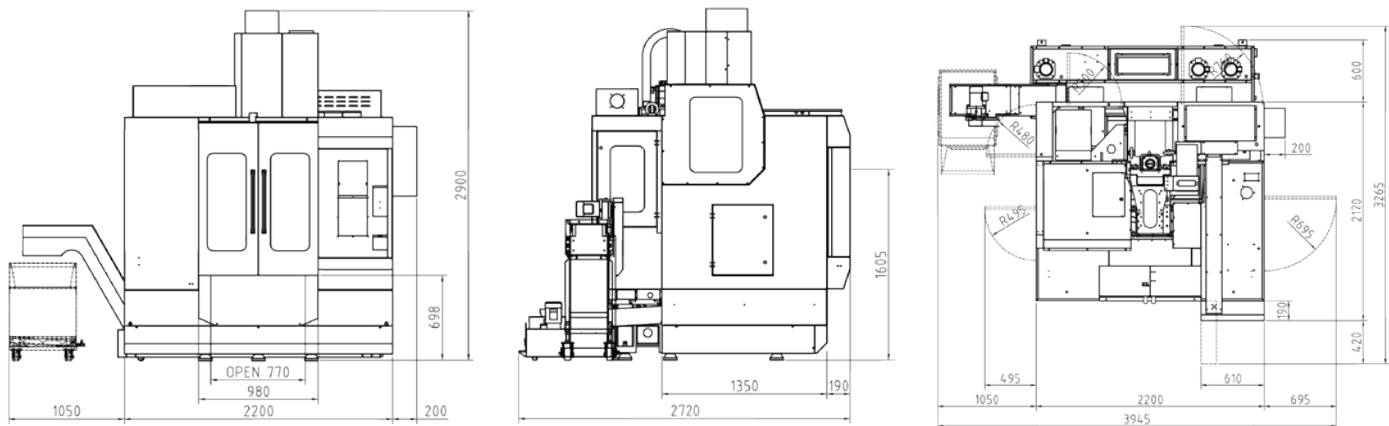
- Coolant through spindle
- Motor spindle 32.000 min⁻¹, HSK E40 (VF760M)
- Chain type chip conveyor
- 4th axis
- 4/5th axis
- Workpiece probe
- Tool probe
- Linear encoder

Work table



MAS403 BT40
BT40 tool holder and pull stud (optional SK40)

Dimensions



* The above specifications are subject to change without prior notice, no liability for mistakes. Machines may be shown with optional equipment.

* The above specifications are subject to change without prior notice, no liability for mistakes. Machines may be shown with optional equipment.

Mini Center



- Training
- Tool room workshop
- Metal parts machining
- Model making
- R&D
- Cast iron is tempered for stress relief to ensure structural stability without deformation



Technical Specifications		Mini Center
Table		
Table size	mm	650 x 300
T-slot (width x number x distance)	mm	14 x 3 x 100
Max. load	kg	200
Travel		
X / Y / Z Travel	mm	500 / 300 / 400
Spindle nose to table distance	mm	120 - 520
Spindle center to column distance	mm	340
Spindle		
Spindle taper	-	SK 40 / BT 40 / CAT 40
Spindle servo motor	kW	4.8 / 19 Siemens 5.5 / 7.5 Fanuc
Spindle speed	min ⁻¹	10.000
Feed		
Rapid speed	m/min	X/Y: 20, Z: 12
Cutting speed	mm/min	1-10.000
Tool changer		
Number of tools	pcs.	12
Max. tool length	mm	280
Max. tool diameter	mm	78 / 125
Max. tool weight	kg	8
Accuracy		
VDI 3441 (Full travel)	mm	Positioning accuracy 0.012 Positioning repeatability 0.008
Dimensions & weight		
Dimensions	mm	1660 x 2000 x 2500
Weight	kg	1800

- Standard configuration:**
- ✓ Fully enclosed splash guard
 - ✓ Belt drive spindle 10.000 min⁻¹
 - ✓ 12 position umbrella tool changer
 - ✓ Heat exchanger for electrical cabinet
 - ✓ Rigid tapping
 - ✓ Ethernet, CF card and USB interface
 - ✓ Automatic lubrication system
 - ✓ Coolant system
 - ✓ Oil separator
 - ✓ LED working lamp
 - ✓ End of program light
 - ✓ Electronic handwheel (MPG)
 - ✓ Tool box
 - ✓ Leveling bolts and blocks
 - ✓ Coolant gun
 - ✓ Air gun
 - ✓ Chip flushing system
 - ✓ User manuals

- Optional configuration:**
- Spindle cooling system
 - Workpiece probe
 - Tool probe



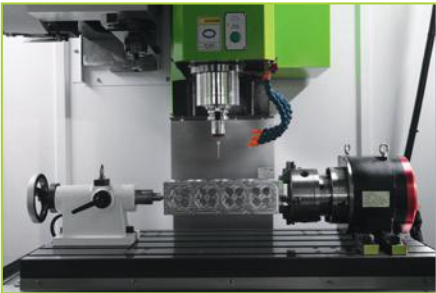
12 station umbrella tool changer



LED Internal lamp



Chip flushing system



Workpiece probe (optional)

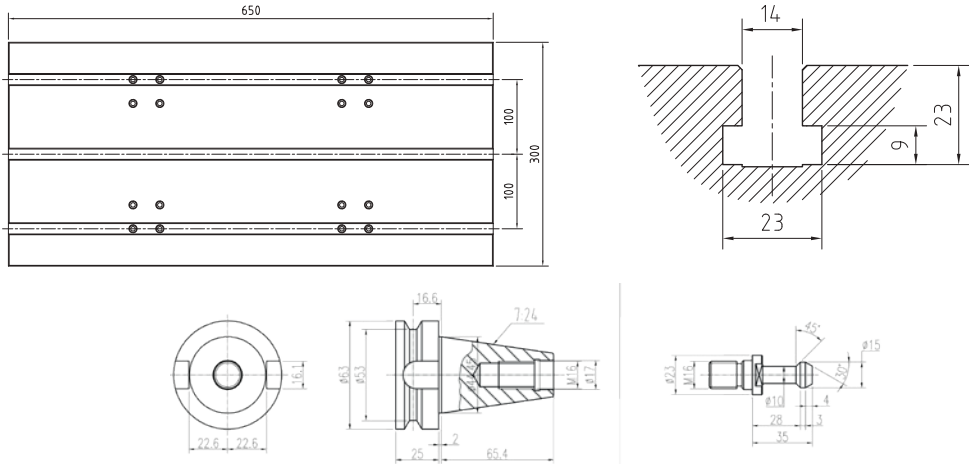


Tool probe (optional)

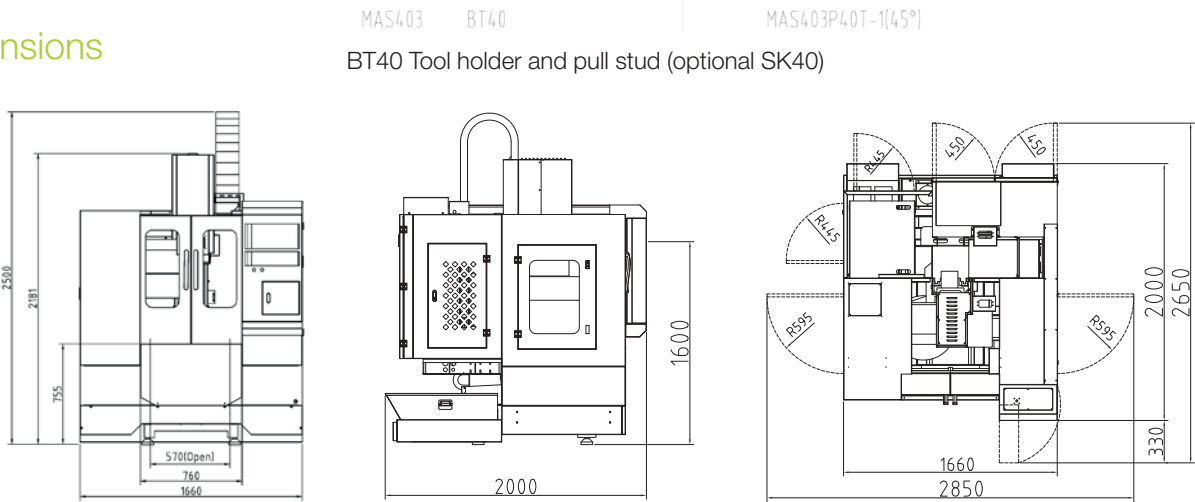


Chip collector & Coolant tank

Work table



Dimensions



* The above specifications are subject to change without prior notice, no liability for mistakes. Machines may be shown with optional equipment.

* The above specifications are subject to change without prior notice, no liability for mistakes. Machines may be shown with optional equipment.

Delta Center T6 · T7



- Highly rigid machine frame for high acceleration
- High speed and low noise ballscrew and linear guideways on three axes
- Direct drive spindle with standard speed 12.000 min⁻¹
- Rapid feed 48 m/min to reduce non-machining time



Standard configuration:

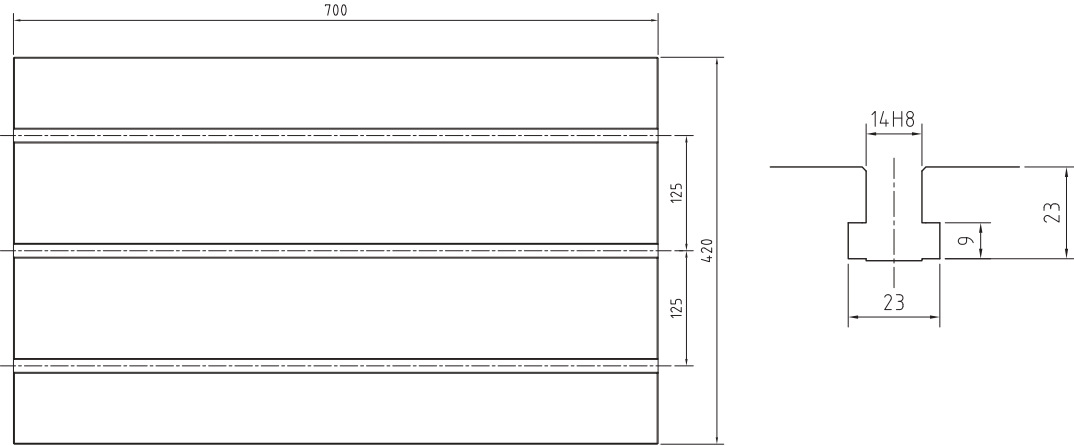
- ✓ Fully enclosed splash guard
- ✓ Direct drive spindle with 12.000 min⁻¹
- ✓ 21 pocket tool changer
- ✓ Heat exchanger for electrical cabinet
- ✓ Rigid tapping
- ✓ Ethernet and CF card and USB interface
- ✓ Automatic lubrication system
- ✓ Coolant system
- ✓ Oil separator
- ✓ LED working lamp
- ✓ End of program light
- ✓ Spindle cooling system
- ✓ Electronic handwheel (MPG)
- ✓ Tool box
- ✓ Leveling bolts and blocks
- ✓ Coolant gun
- ✓ Air gun
- ✓ Chip flushing system
- ✓ User manuals

Optional configuration:

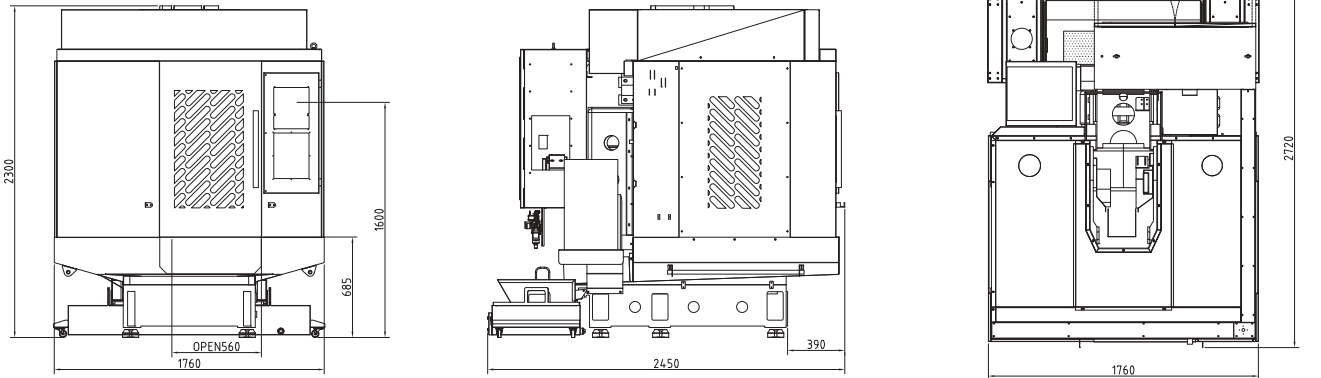
- Spindle speed 20.000 min⁻¹
- 21 pocket servo tool changer
- 4th axis
- Workpiece probe
- Tool probe
- Coolant through spindle

Technical specifications		T6	T7
Table			
Table	mm	700 x 420	900 x 420
T-slot (width x number x distance)	mm	14 x 3 x 125	
Max. load	kg	350	
Travel			
X / Y / Z Travel	mm	600 / 400 / 300	760 / 450 / 420
Spindle nose to table distance	mm	150 - 450	
Spindle center to column	mm	465	517
Spindle			
Spindle taper	-	BT 30	BBT 30
Spindel servo motor	kW	4.8 / 19 Siemens 3.7 / 5.5 Fanuc	
Spindle speed	min ⁻¹	12.000	
Feed			
Rapid feed	m/min	48	
Cutting feed	mm/min	1-12.000	
Tool changer			
Number of tools	pcs.	21	
Max. tool length	mm	250	
Max. tool diameter	mm	60 (80)	
Max. tool weight	kg	3	
Accuracy			
VDI 3441 (Full travel)	mm	Positioning accuracy 0.010 Positioning repeatability 0.006	
Dimensions & weight			
Dimensions	mm	1760 x 2450 x 2300	2200 x 2600 x 2500
Weight	kg	3000	3700

Work table (T6)



Dimensions



* The above specifications are subject to change without prior notice, no liability for mistakes. Machines may be shown with optional equipment.

* The above specifications are subject to change without prior notice, no liability for mistakes. Machines may be shown with optional equipment.

Delta Center V6L



- Training
- Tool room workshop
- Metal parts machining
- Mold making, R&D
- Cast iron is tempered for stress relief to ensure structural stability without deformation
- C3 class ballscrews ensures the highest accuracy and durability
- Pre-tension on all axes minimizes thermal distortion



Technical Specifications		Delta Center V6L
Table		
Table size	mm	750 x 400
T-slot (width x number x distance)	mm	14 x 3 x 125
Max. load	kg	350
Travel		
X/Y/Z Travel	mm	600 / 400 / 450
Spindle nose to table distance	mm	80 - 530
Spindle center to column distance	mm	434
Spindle		
Spindle taper	-	SK 40 / BT 40 / CAT 40
Spindle speed	min ⁻¹	10.000
Spindle servo motor	kW	7 / 15 Siemens 5.5 / 7.5 Fanuc
Feed		
Rapid feed	m/min	48
Cutting speed	mm/min	1-12.000
Tool changer		
Number of tools	pcs.	20
Max. tool length	mm	280
Max. tool diameter	mm	78 (125)
Max. tool weight	kg	8
Accuracy		
VDI 3441 (Full travel)	mm	Positioning accuracy 0.010 Positioning repeatability 0.006
Dimensions & Weight		
Dimensions	mm	1800 × 2530 × 2700
Weight	kg	3500

Standard configuration:

- ✓ Fully enclosed splash guard
- ✓ Belt drive spindle 10.000 min⁻¹
- ✓ 20 pocket arm tool changer
- ✓ Heat exchanger for electrical cabinet
- ✓ Rigid tapping
- ✓ Ethernet CF card and USB interface
- ✓ Automatic lubrication system
- ✓ Coolant system
- ✓ Oil separator
- ✓ LED working lamp
- ✓ End of program light
- ✓ Electronic handwheel (MPG)
- ✓ Tool box
- ✓ Leveling bolts and blocks
- ✓ Coolant gun
- ✓ Air gun
- ✓ Chip flushing system
- ✓ User manuals

Optional configuration:

- Spindle speed 12.000 min⁻¹, direct drive
- Spindle cooling system
- Coolant through spindle
- 4th axis
- Workpiece probe
- Tool probe

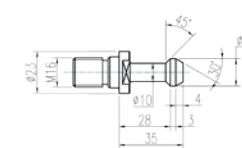
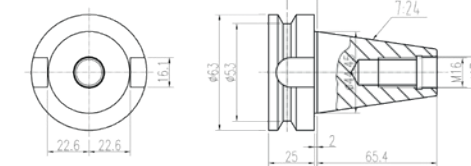
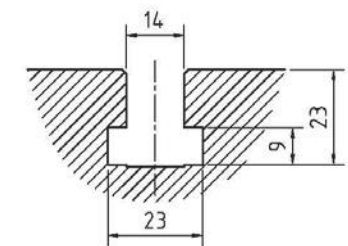
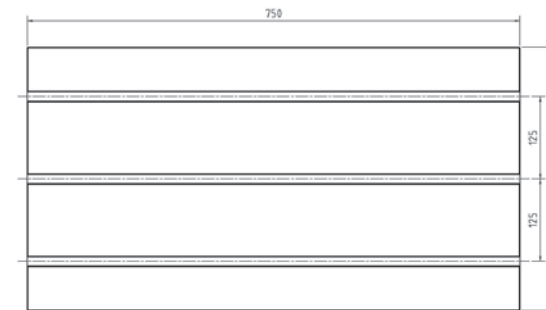


20 pocket arm tool changer



4th axis optional

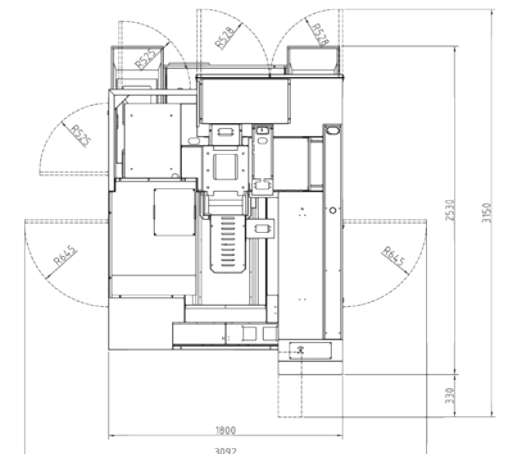
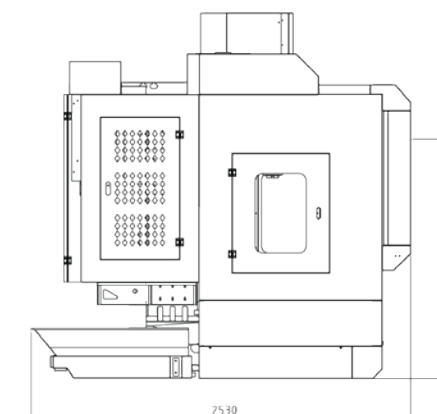
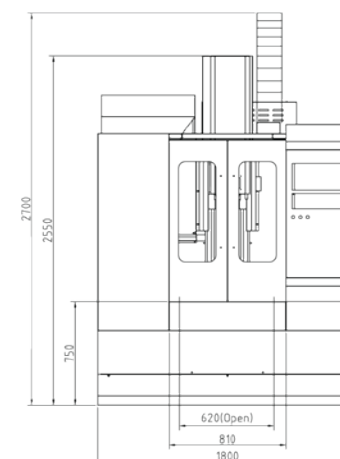
Work table



MAS403 BT40

BT40 tool holder and pull stud (optional SK40)

Dimensions



Delta Center V10L



- Cast iron is tempered for stress relief to ensure structural stability without deformation
- Pre-tension on all axes minimizes thermal distortion
- C3 class ballscrews ensures the highest accuracy and durability



Technical Specifications		Delta Center V10L
Table		
Table size	mm	1100 x 500
T-slot (width x number x distance)	mm	18 x 5 x 100
Max. load	kg	600
Travel		
X/Y/Z Travel	mm	1020 / 520 / 550
Spindle nose to table distance	mm	120 - 670
Spindle center to column distance	mm	566
Spindle		
Spindle taper	-	SK 40 / BT 40 / CAT 40
Spindle speed	min ⁻¹	1-12.000
Spindle servo motor	kW	9 / 22 Siemens 7.5 / 11 Fanuc
Tool changer		
Number of tools	pcs.	24
Max. tool diameter (without adjacent tool)	mm	78 (125)
Max. tool length	mm	300
Max. tool weight	kg	8
Feed		
Rapid feed	m/min	30 (opt. 48)
Cutting speed	mm/min	1-12.000
Accuracy		
VDI 3441 (Full travel)	mm	Positioning accuracy 0.010 Positioning repeatability 0.006
Dimensions & weight		
Dimensions	mm	2570 x 2160 x 2850
Weight	kg	5000

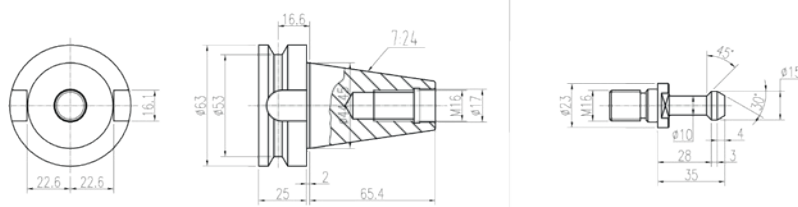
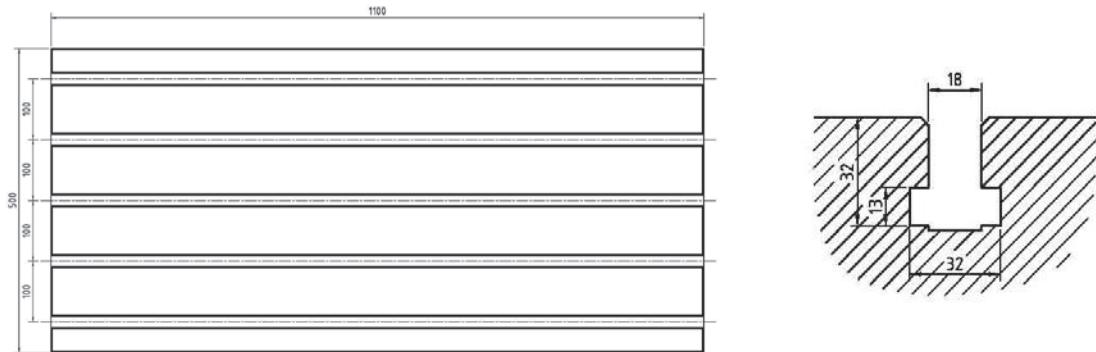
Standard configuration:

- ✓ Fully enclosed splash guard
- ✓ Belt drive spindle 10.000 min⁻¹
- ✓ 24 pocket arm tool changer
- ✓ Air-conditioned electrical cabinet
- ✓ Rigid tapping
- ✓ Ethernet, CF card and USB interface
- ✓ Automatic lubrication system
- ✓ Coolant system
- ✓ Oil separator
- ✓ LED working lamp
- ✓ End of program light
- ✓ Electronic handwheel (MPG)
- ✓ Tool box
- ✓ Leveling bolts and blocks
- ✓ Coolant gun
- ✓ Air gun
- ✓ Chip flushing system
- ✓ User manuals

Optional configuration:

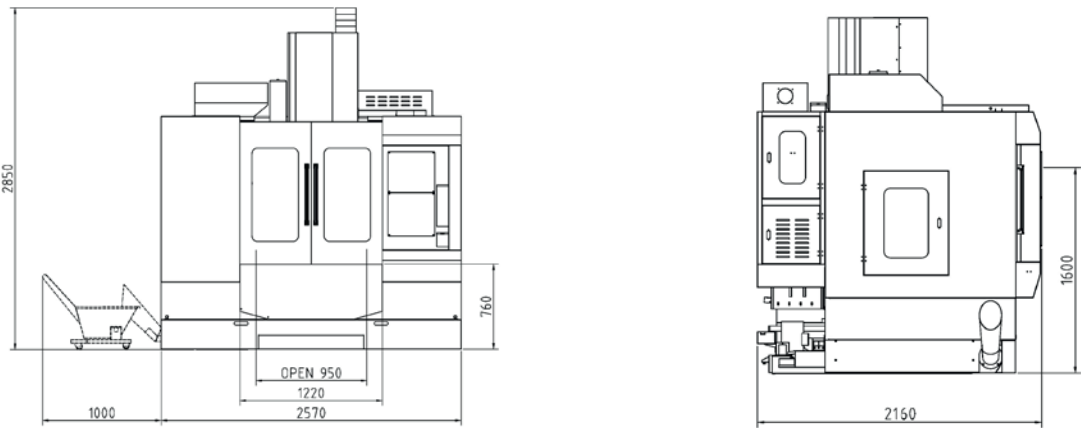
- Spindle speed 12.000 min⁻¹, direct drive
- Spindle cooling system
- Coolant through spindle
- Chain type chip conveyor
- 4th axis
- 4/5th axis
- Workpiece probe
- Tool probe

Work table

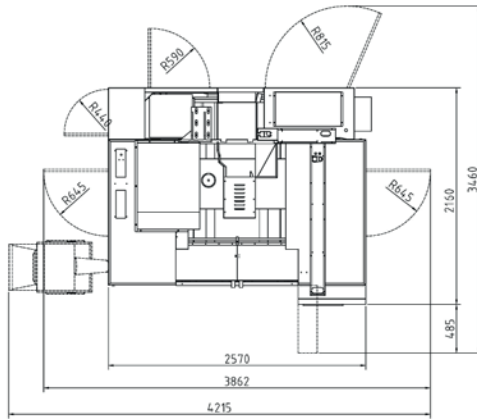


MAS403 BT40
BT40 tool changer and pull stud (optional SK40)

Dimensions



4th axis, different sizes



* The above specifications are subject to change without prior notice, no liability for mistakes. Machines may be shown with optional equipment.

* The above specifications are subject to change without prior notice, no liability for mistakes. Machines may be shown with optional equipment.

Alpha Center V7L



Technical Specifications		Alpha Center V7L
Table		
Table size	mm	900 x 420
T-slot (width x number x distance)	mm	14 x 3 x 125
Max. load	kg	350
Travel		
X/Y/Z Travel	mm	760 / 450 / 520
Spindle nose to table distance	mm	100 - 620
Spindle center to column distance	mm	517
Spindle		
Spindle taper	-	SK 40 / BT 40 / CAT 40
Spindle speed	min ⁻¹	10.000
Spindle servo motor	kW	9 / 22 Siemens 7,5 / 11 Fanuc
Feed		
Rapid feed	m/min	48
Cutting speed	mm/min	1-12.000
Tool changer		
Number of tools	pcs.	24
Max. tool length	mm	300
Max. tool diameter	mm	78 (125)
Max. tool weight	kg	8
Accuracy		
VDI 3441 (Full travel)	mm	Positioning accuracy 0.010 Positioning repeatability 0.006
Dimension & Weight		
Dimension	mm	2575 x 2760 x 2900
Weight	kg	4500

- Standard configuration:
- ✓ Fully enclosed splash guard

✓ Belt drive spindle 10.000 min⁻¹

✓ 24 pocket arm tool changer

✓ Air-conditioned electrical cabinet

✓ Rigid tapping

✓ Ethernet CF card and USB interface

✓ Automatic lubrication system

✓ Coolant system

✓ Oil separator

✓ LED working lamp

✓ End of program light

✓ Electronic handwheel (MPG)

✓ Tool box

✓ Leveling bolts and blocks

✓ Coolant gun

✓ Air gun

✓ Chip flushing system

✓ User manuals

- Optional configuration:
- Spindle speed 12.000 min⁻¹, direct drive

■ Spindle cooling system

■ Coolant through spindle

■ Workpiece probe

■ Chain type chip conveyor

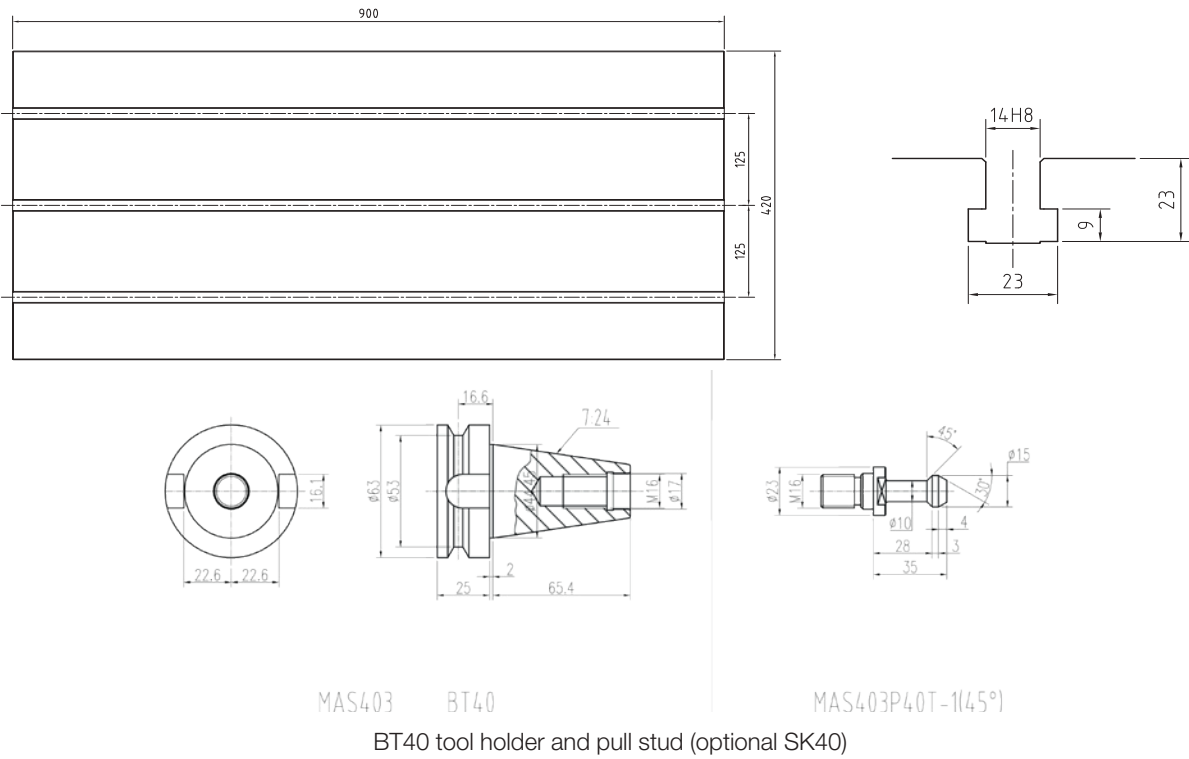
■ 4th axis

■ 4/5th axis

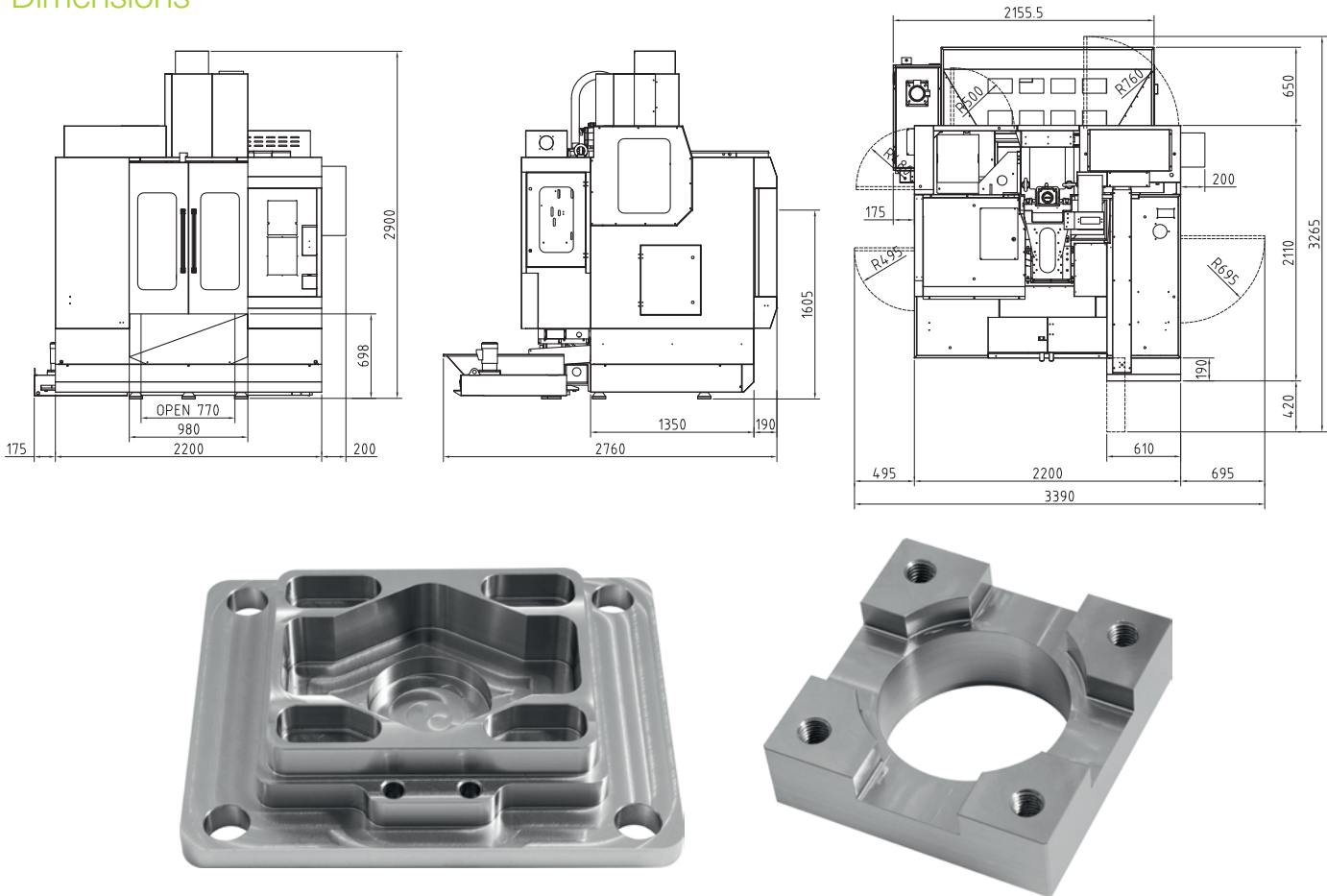
■ Tool probe



Working table



Dimensions



* The above specifications are subject to change without prior notice, no liability for mistakes. Machines may be shown with optional equipment.

* The above specifications are subject to change without prior notice, no liability for mistakes. Machines may be shown with optional equipment.

Alpha Center V9L · V11L



- Cast iron is tempered for stress relief to ensure structural stability without deformation
- C3 class ballscrews ensures the highest accuracy and durability
- Pre-tension on all axis minimizes thermal distortion



Technical Specifications		V9L	V11L
Table			
Table size	mm	1000 x 500	1200 x 600
T-slots (width x number x distance)	mm	18 x 5 x 100	
Max. load	kg	650	800
Travel			
X/Y/Z Travel	mm	900 / 550 / 600	1100 / 600 / 600
Spindle nose to table distance	mm	80 - 680	150 - 750
Spindle center to column distance	mm	585	652
Spindle			
Spindle taper	-	SK 40 / BT 40 / CAT 40	
Spindle servo motor	kW	9 / 22 Siemens 11 / 15 Fanuc	
Spindle speed	min ⁻¹	10.000	
Feed			
Rapid feed	m/min	36	
Cutting speed	mm/ min	1-12.000	
Tool changer			
Number of tools	pcs.	24	
Max. tool length	mm	300	
Max. tool diameter	mm	78 (125)	
Max. weight	kg	8	
Accuracy			
VDI 3441 (Full travel)	mm	Positioning accuracy 0.010 Positioning repeatability 0.006	
Dimensions & weight			
Dimensions	mm	2700 x 2330 x 2900	
Weight	kg	6000	6500

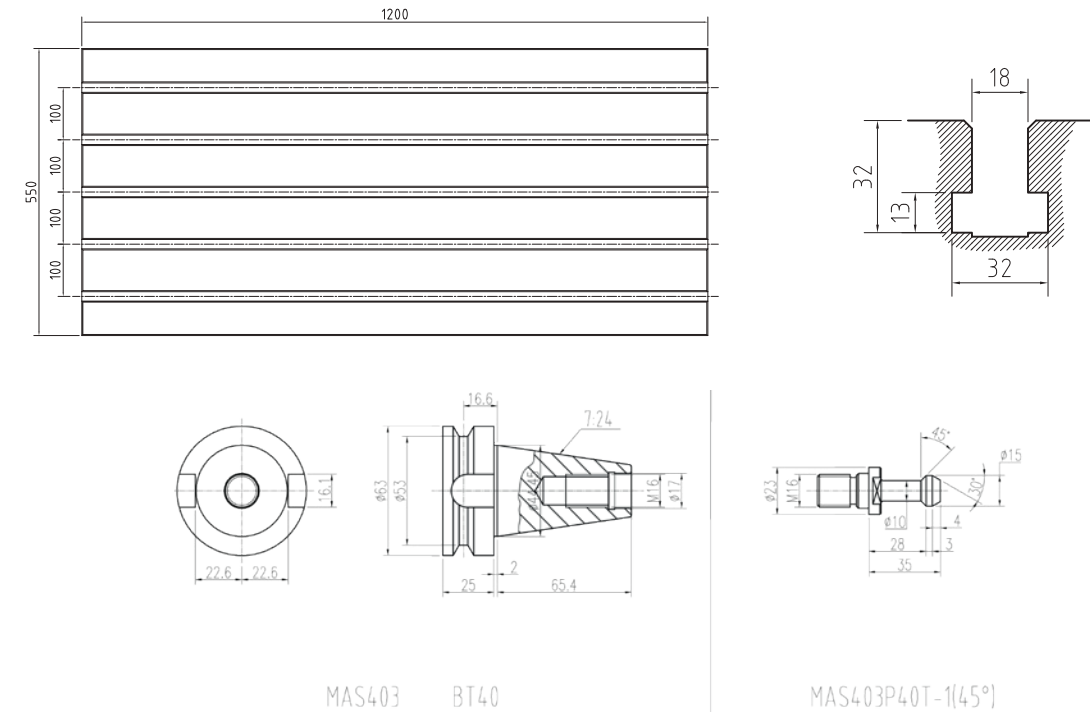
Standard configuration:

- ✓ Fully enclosed splash guard
- ✓ Belt drive spindle 10.000 min⁻¹
- ✓ 24 pocket arm tool changer
- ✓ Air-conditioned for electrical cabinet
- ✓ Rapid tapping
- ✓ Ethernet, CF card and USB interface
- ✓ Automatic lubrication system
- ✓ Coolant system
- ✓ Oil separator
- ✓ LED working lamp
- ✓ End of program light
- ✓ Electronic handwheel (MPG)
- ✓ Tool box
- ✓ Leveling bolts and blocks
- ✓ Coolant gun
- ✓ Air gun
- ✓ Chip flushing system
- ✓ User manuals

Optional configuration:

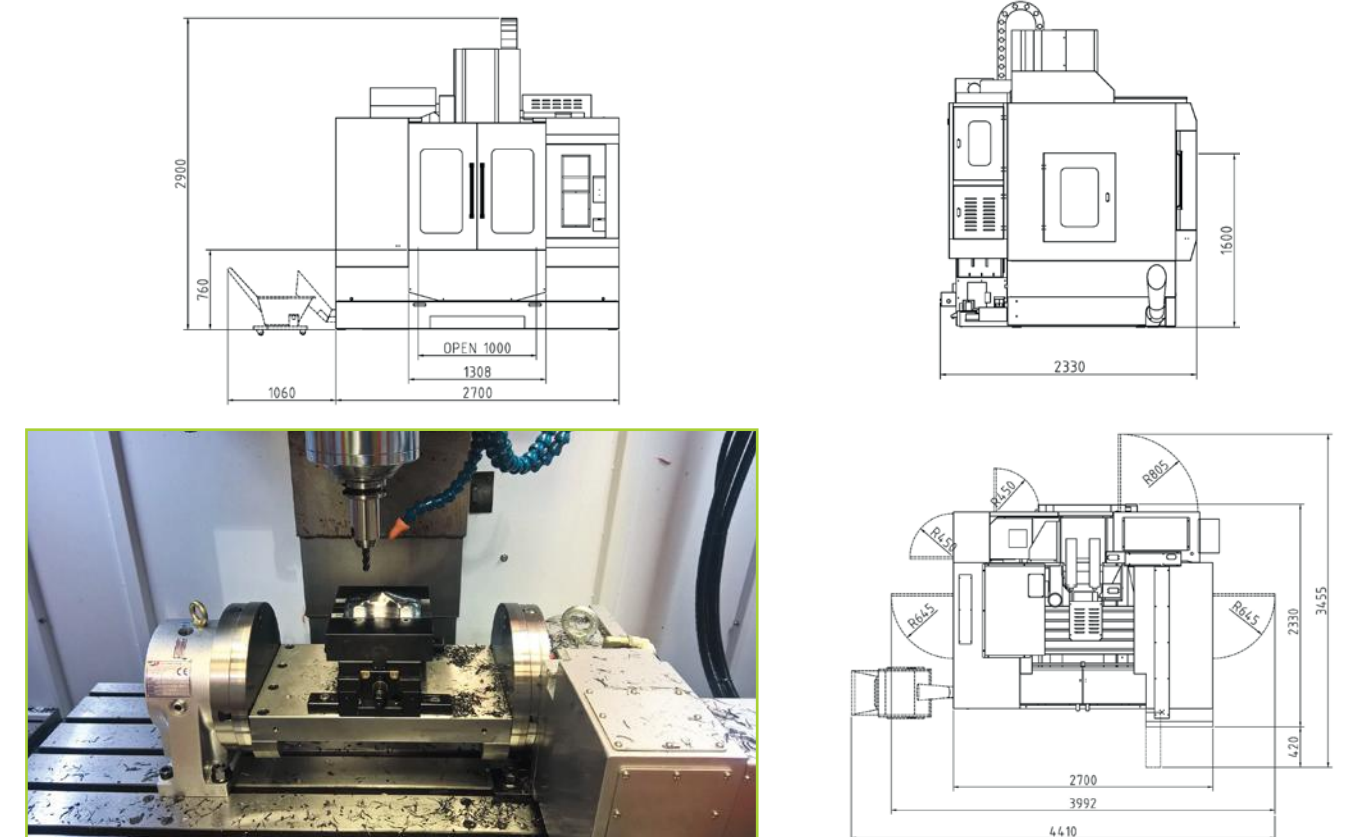
- Spindle speed 12.000 min⁻¹, direct drive
- Spindle cooling system
- Coolant through spindle
- Chain type chip conveyor
- 4th axis
- 4/5th axis
- Workpiece probe
- Tool probe

Work table (V11L)



BT40 Tool holder and pull stud (optional SK40)

Dimensions (V11L)



4th axis, different sizes

Alpha Center V13L · V15L



- Cast iron is tempered for stress relief to ensure structural stability without deformation
- C3 class ballscrews ensures the highest accuracy and durability
- Pre-tension on all axis minimizes thermal distortion

Technical Specifications		V13L	V15L
Table			
Table size	mm	1400 x 600	1700 x 600
T-slot (width x number x distance)	mm	18 x 5 x 100	
Max. load	kg	1000	1200
Travel			
X / Y / Z Travel	mm	1300 / 760 / 670	1500 / 760 / 670
Spindle nose to table distance	mm	80 - 750	
Spindle center to column distance	mm	797	
Spindle			
Spindle taper	-	SK 40 / BT 40 / CAT 40	
Spindle speed	min ⁻¹	10.000	
Spindle servo motor	kW	15 / 38 Siemens 11 / 15 Fanuc	
Tool changer			
Number of tools	pcs.	24	
Max. tool length	mm	300	
Max. tool diameter	mm	78 (125)	
Max. tool weighth	kg	8	
Feed			
Rapid feed	m/min	24	
Cutting speed	mm/min	1-12.000	
Accuracy (VDI 3441 Full travel)			
Positioning accuracy	mm	0.012	0.015
Positioning repeatability	mm	0.008	
Dimnesions & weight			
Dimensions	mm	3700 x 2640 x 3100	
Weight	kg	8000	8500

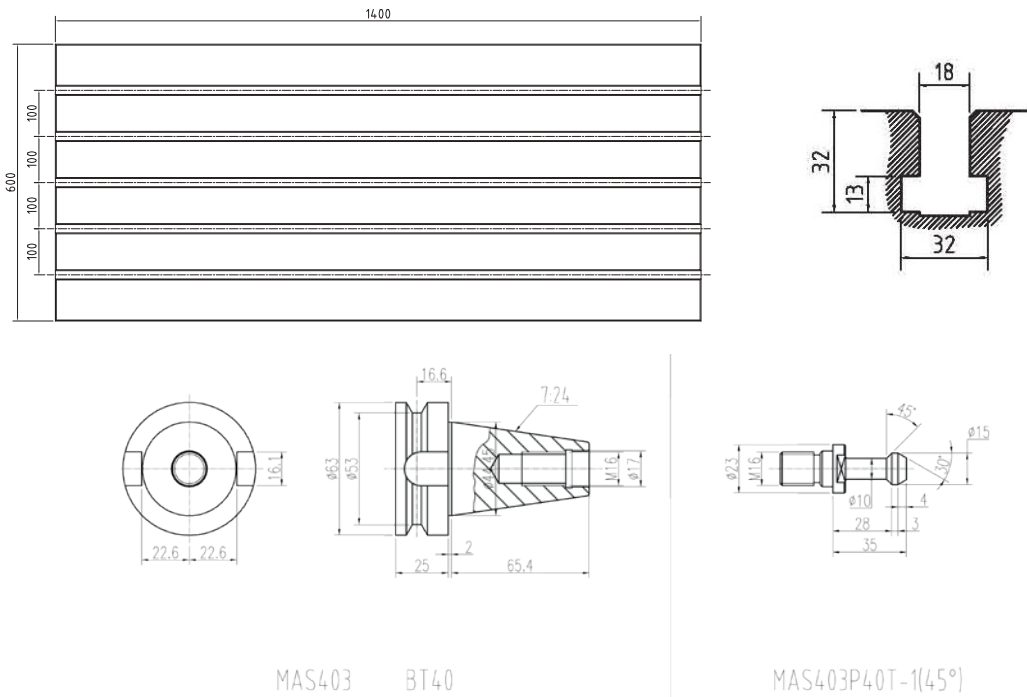
Standard configuration:

- ✓ Fully enclosed splash guard
- ✓ Belt drive spindle 10.000 min⁻¹
- ✓ 24 pocket arm tool changer
- ✓ Air-conditioned electrical cabinet
- ✓ Rigid tapping
- ✓ Ethernet, CF card and USB interface
- ✓ Automatic lubrication system
- ✓ Coolant system
- ✓ Oil separator
- ✓ LED working lamp
- ✓ End of program light
- ✓ Electronic handwheel (MPG)
- ✓ Tool box
- ✓ Leveling bolts and blocks
- ✓ Coolant gun
- ✓ Air gun
- ✓ Air blast during cutting
- ✓ User manuals

Optional configuration:

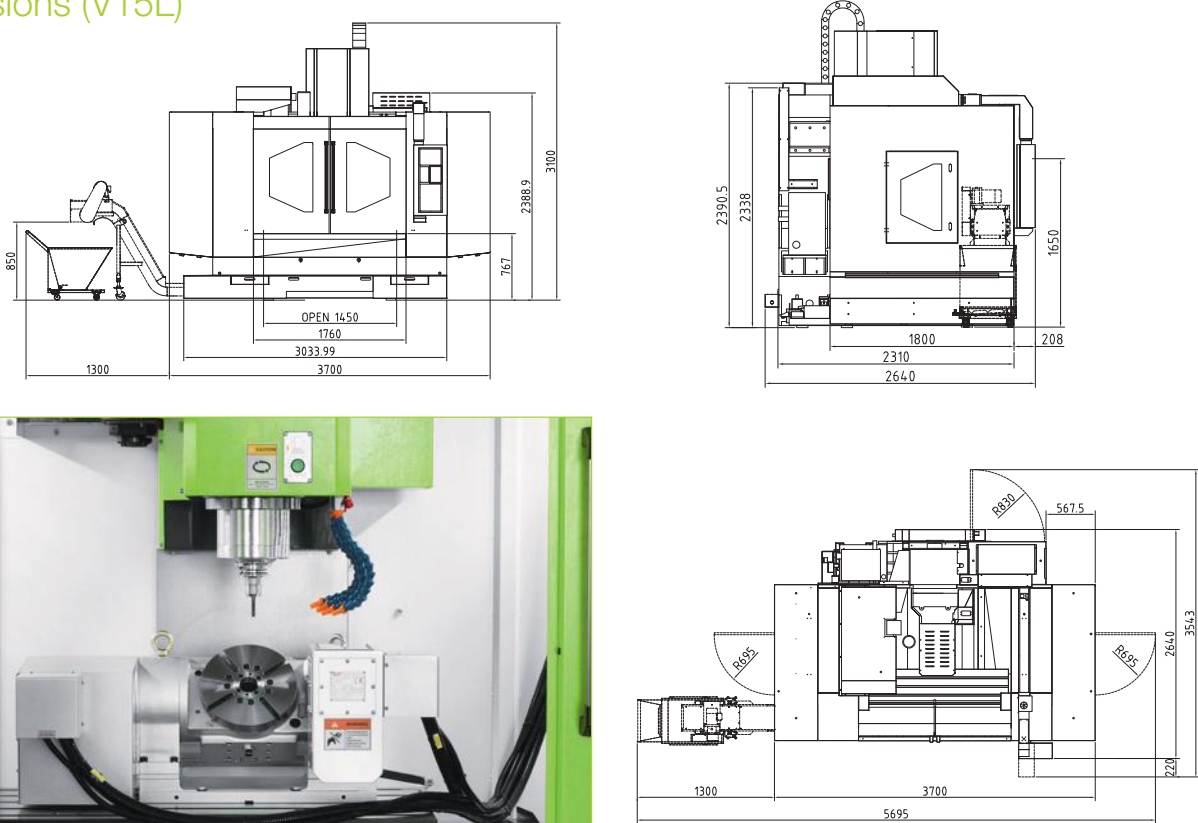
- Spindle speed 12.000 min⁻¹, direct drive
- Spindle cooling system
- Coolant through spindle
- Chain type chip conveyor
- 4th axis
- 4/5th axis
- Workpiece probe
- Tool probe

Work table (V15L)



BT40 Tool holder and pull stud (optional SK40)

Dimensions (V15L)



* The above specifications are subject to change without prior notice, no liability for mistakes. Machines may be shown with optional equipment.

* The above specifications are subject to change without prior notice, no liability for mistakes. Machines may be shown with optional equipment.

Power Center V11



- Pre-tension on all axis minimizes thermal distortion
- C3 class ballscrews ensures the highest accuracy and durability

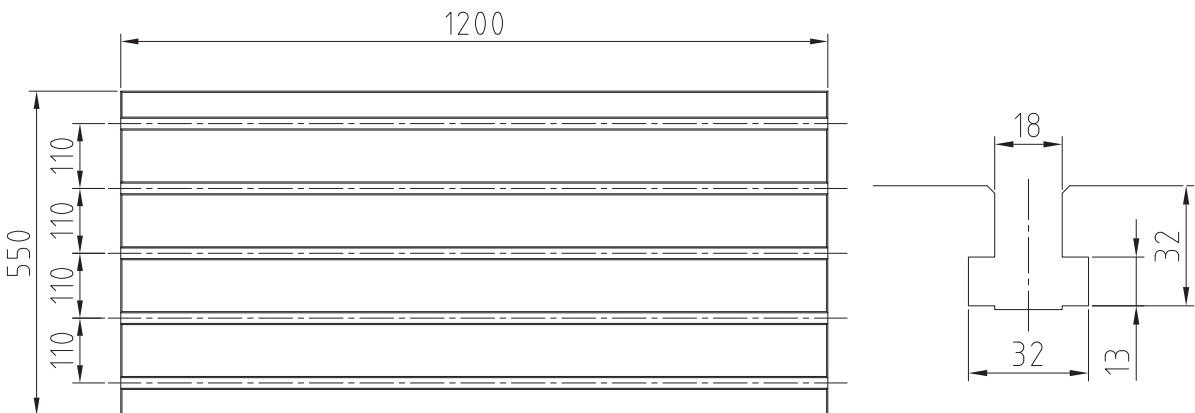
Standard configuration:

- ✓ Fully enclosed splash guard
- ✓ Belt drive spindle 8000 min⁻¹
- ✓ 24 pocket arm tool changer
- ✓ Air-conditioned electrical cabinet
- ✓ Rigid tapping
- ✓ Ethernet, CF card and USB interface
- ✓ Automatic lubrication system
- ✓ Coolant system
- ✓ Oil separator
- ✓ LED working lamp
- ✓ End of program light
- ✓ Electronic handwheel (MPG)
- ✓ Tool box
- ✓ Leveling bolts and blocks
- ✓ Coolant gun
- ✓ Air gun
- ✓ Air blast during cutting
- ✓ User manuals

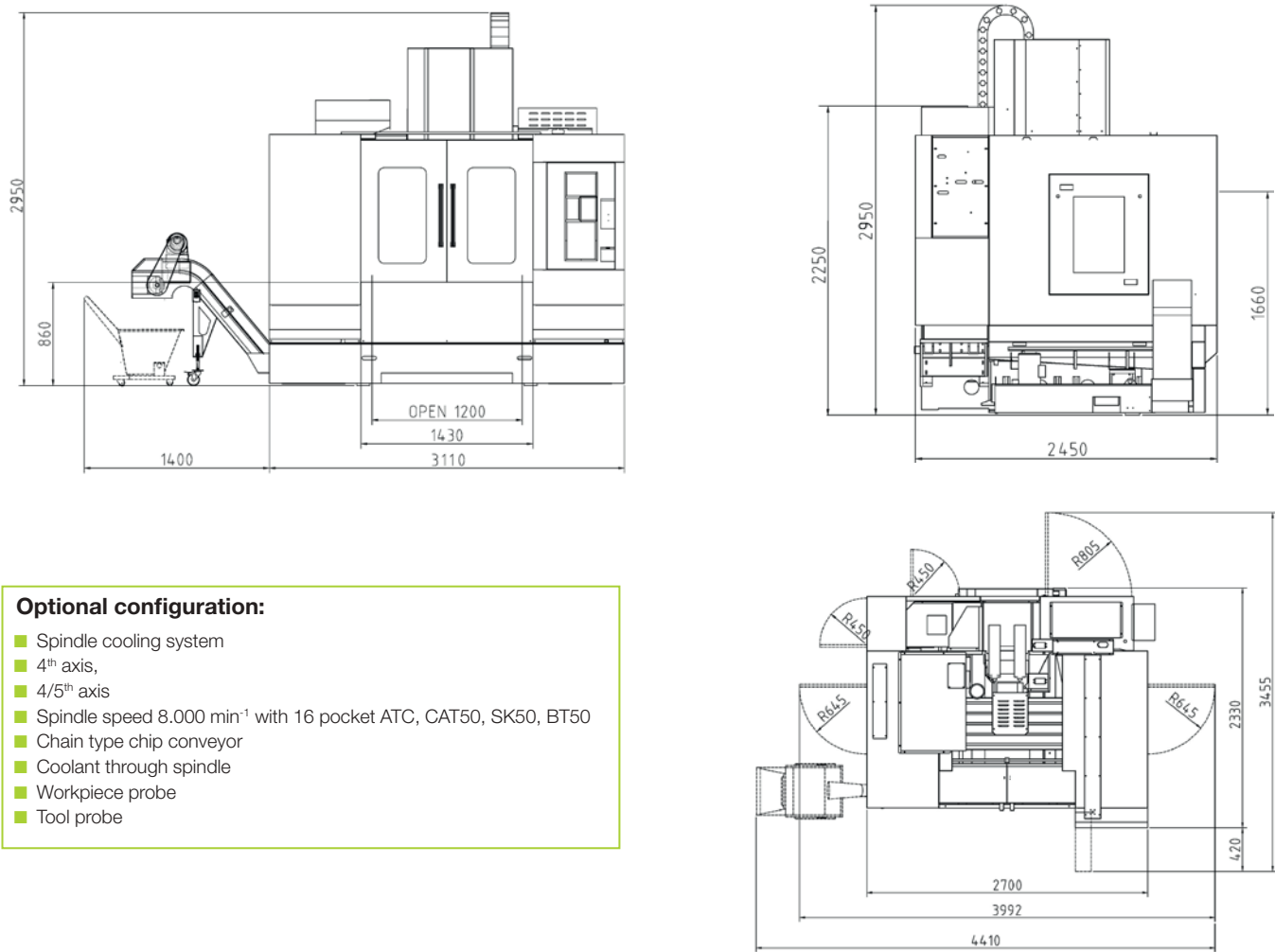
Technical Specifications		Power Center V11
Table		
Table size	mm	1200 x 600
T-slot (width x number x distance)	mm	18 x 5 x 110
Max. load	kg	850
Travel		
X/Y/Z Travel	mm	1100 / 600 / 560
Spindle nose to table distance	mm	100 - 660
Spindle center to column distance	mm	638
Spindle		
Spindle taper	-	CAT 40 / SK 40 / BT 40
Spindle servo motor	kW	15 / 38 Siemens 15 / 18.5 Fanuc
Spindle speed	min ⁻¹	8.000

Technical Specifications		Power Center V11
Feed		
Rapid feed	m/min	20
Cutting speed	mm/min	1-8.000
Tool changer		
Number of tools	pcs.	24
Max. tool length	mm	300
Max. tool diameter	mm	78 (125)
Max. tool weight	kg	8
Accuracy		
VDI 3441 (Full travel)	mm	Positioning accuracy 0.012 Positioning repeatability 0.008
Dimensions & weight		
Dimensions	mm	3110 x 2450 x 2950
Weigth	kg	8000

Working table



Dimensions



Optional configuration:

- Spindle cooling system
- 4th axis,
- 4/5th axis
- Spindle speed 8.000 min⁻¹ with 16 pocket ATC, CAT50, SK50, BT50
- Chain type chip conveyor
- Coolant through spindle
- Workpiece probe
- Tool probe

* The above specifications are subject to change without prior notice, no liability for mistakes. Machines may be shown with optional equipment.

* The above specifications are subject to change without prior notice, no liability for mistakes. Machines may be shown with optional equipment.

Power Center V18



- C3 class ballscrews ensures the highest accuracy and durability
- Pre-tension on all axis minimizes thermal distortion

Technical Specifications		Power Center V18
Table		
Table size	mm	1900 x 900
T-slot (width x number x distance)	mm	18 x 7 x 120
Max. load	kg	3000
Travel		
X / Y / Z Travel	mm	1800 / 900 / 700
Spindle nose to table distance	mm	200 - 900
Spindle center to column distance	mm	1025
Spindle		
Spindle taper	-	SK 50 / BT 50 / CAT 50
Spindle servo motor	kW	18.5 / 48 Siemens 22 / 26 Fanuc
Spindle speed	min ⁻¹	6.000
Feed		
Rapid speed	m/min	15
Cutting speed	mm/min	1-7.000
Tool changer		
Number of tools	pcs.	24
Max. tool length	mm	350
Max. tool diameter	mm	125 / 245 (next release)
Max. tool weight	kg	15
Accuracy		
VDI 3441 (Full travel)	mm	Positioning accuracy 0.020 Positioning repeatability 0.010
Dimensions & weight		
Dimensions	mm	4500 x 3450 x 3200
Weight	kg	17500

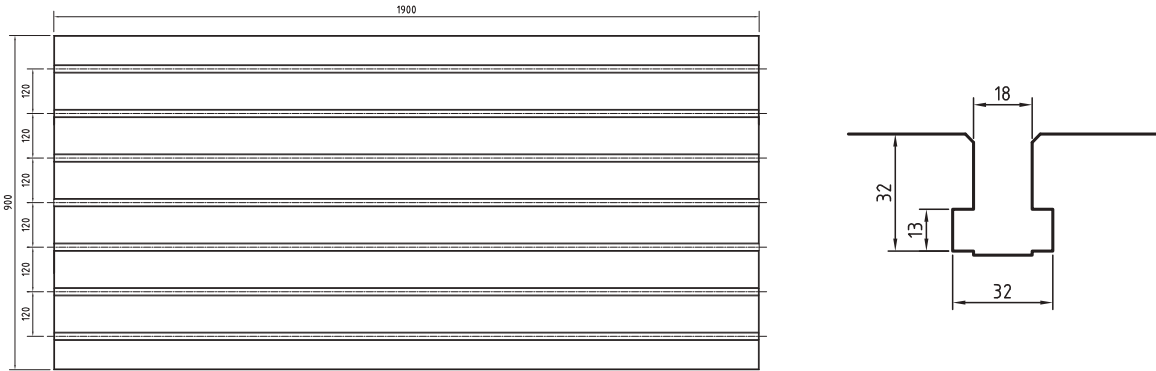
Standard configuration:

- ✓ Fully enclosed splash guard
- ✓ Belt drive spindle 6.000 min⁻¹
- ✓ 24 pocket arm tool changer
- ✓ Air-conditioned electrical cabinet
- ✓ Rigid tapping
- ✓ Ethernet, CF card and USB interface
- ✓ Automatic lubrication system
- ✓ Coolant system
- ✓ Oil separator
- ✓ LED working lamp
- ✓ End of program light
- ✓ Electronic handwheel (MPG)
- ✓ Tool box
- ✓ Leveling bolts and blocks
- ✓ Coolant gun
- ✓ Air gun
- ✓ Air blast during cutting
- ✓ User manuals

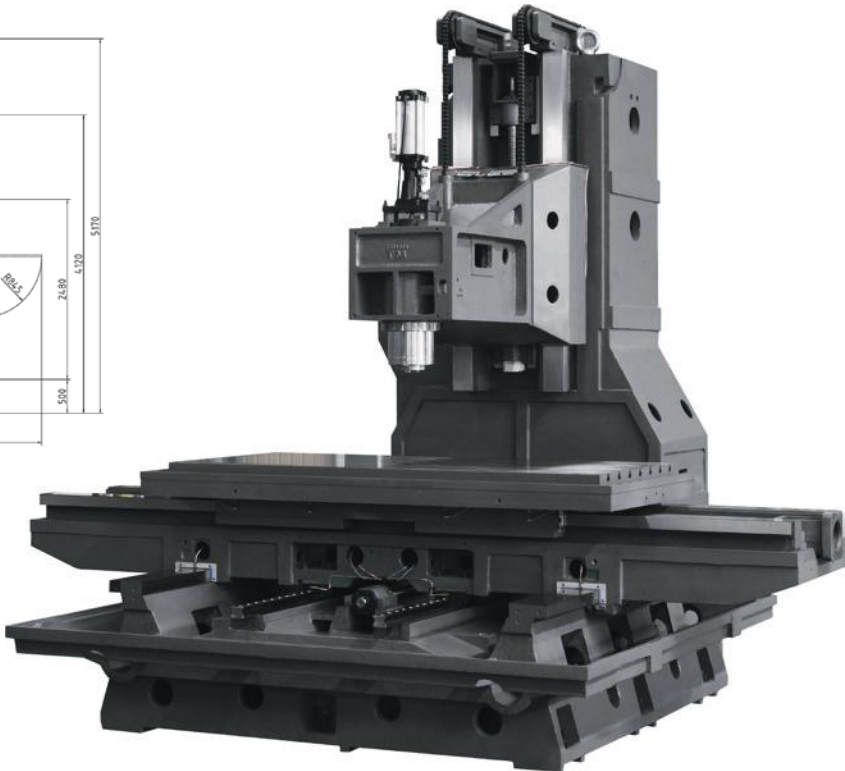
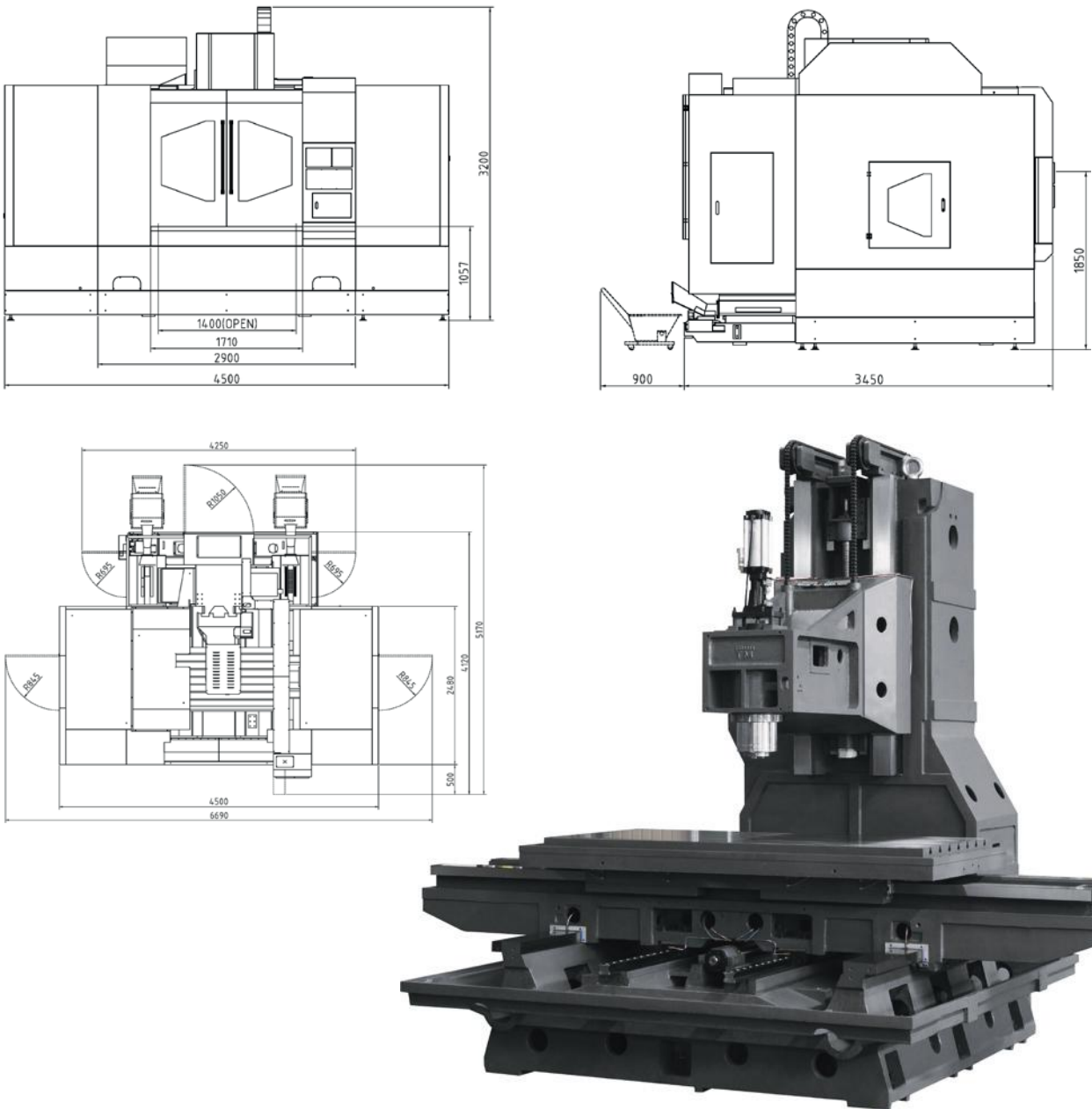
Optional configuration:

- Spindle cooling system
- Chip conveyor (two screw type and one chain type)
- Gear head spindle 6.000 min⁻¹ with transmission ratio 1:4
- Coolant through spindle
- 4th axis,
- 4/5th axis
- Workpiece probe
- Tool probe

Working table



Dimensions



* The above specifications are subject to change without prior notice, no liability for mistakes. Machines may be shown with optional equipment.

* The above specifications are subject to change without prior notice, no liability for mistakes. Machines may be shown with optional equipment.

High Speed Double Column Center V65HS



- High rigidity of machine frame for high acceleration
- Cast iron is tempered for stress relief to ensure structural stability without deformation
- C3 class ballscrews ensures the highest accuracy and durability
- Pre-tension on all axes minimizes thermal distortion

Technical Specifications		V65HS
Table		
Table size	mm	600 x 500
T-slot (width x number x distance)	mm	18 x 5 x 100
Max. load	kg	300
Travel		
X/Y/Z Travel	mm	600 / 500 / 250
Spindle nose to table distance	mm	80 - 330
Spindle center to column distance	mm	760
Spindle		
Spindle taper	-	HSK E40
Spindle servo motor	kW	5.5
Spindle speed	min ⁻¹	30.000
Feed		
Rapid feed	m/min	15
Cutting speed	mm/min	1-8.000
Tool changer		
Number of tools	pcs.	12
Max. tool length	mm	150
Max. tool diameter	mm	16
Max. tool weight	kg	3
Accuracy		
VDI 3441 (Full travel)	mm	Positioning accuracy 0.009 Positioning repeatability 0.006
Dimensions & weight		
Dimensions	mm	1750 x 2000 x 2300
Weight	kg	3500

Standard configuration:	
✓ Fully enclosed splash guard	✓ Automatic lubrication system
✓ HIWIN linear guideways in 3 axis	✓ Coolant system
✓ Motor spindle 30.000 min ⁻¹ , HSK E40	✓ LED working lamp
✓ 12 position umbrella tool changer	✓ End of program light
✓ Spindle cooling system	✓ Electronic handwheel (MPG)
✓ Ethernet, CF card and USB interface	✓ Chip flushing system
	✓ Leveling bolts and blocks
	✓ Air gun
	✓ User manuals

Optional configuration:	
■ Graphite machining preparation	
■ Spindle nose to table change to 180-430 mm / 280-530 mm	
■ Tool probe	

High Speed Double Column Center V1613HS



Standard configuration:	
✓ Fully enclosed splash guard	✓ LED working lamp
✓ Direct drive spindle 12.000 min ⁻¹	✓ End of program light
✓ Air-conditioned electrical cabinet	✓ Electronic handwheel (MPG)
✓ Rigid tapping	✓ Tool box
✓ Ethernet, CF card and USB interface	✓ Leveling bolts and blocks
✓ Automatic lubrication system	✓ Coolant gun
✓ Coolant system	✓ Air gun
✓ Spindle cooling system	✓ User manuals

Optional configuration:	
■ Direct drive spindle 15.000 min ⁻¹	
■ Motor spindle 20.000 min ⁻¹ , HSK A63	
■ 32 pocket arm tool changer	
■ Chip conveyor (two screw type and one chain type)	

Technical Specifications		V1613HS
Table		
Table size	mm	1700 x 1200
T-slot (width x number x distance)	mm	18 x 7 x 150
Max. load	kg	3000
Travel		
X/Y/Z Travel	mm	1600 / 1300 / 600
Spindle nose to table distance	mm	200 - 800
Spindle center to column distance	mm	1380
Spindle		
Spindle taper	-	SK40 / BT40 / CAT40
Spindle servo motor	kW	9 /22 Siemens 7.5/11 Fanuc
Spindle speed	min ⁻¹	12.000
Feed		

Technical Specifications		V1613HS
Rapid speed	mm/min	20
Cutting speed	mm/min	1-12.000
Tool changer		
Number of tools	pcs.	32 (option)
Max. tool length	mm	300
Max. tool diamter	mm	78 (125)
Max. tool weight	kg	8
Accuracy		
VDI 3442 (Full travel)	mm	Positioning accuracy 0.015 Positioning repeatability 0.012
Dimensions & weight		
Dimensions	mm	4500 x 2800 x 3200
Weight	kg	13000

* The above specifications are subject to change without prior notice, no liability for mistakes. Machines may be shown with optional equipment.

* The above specifications are subject to change without prior notice, no liability for mistakes. Machines may be shown with optional equipment.

Double Column Center
V2317 · V3317 · V3025 · V4025



Standard configuration:

- ✓ Fully enclosed splash guard
 - ✓ Air-conditioned electrical cabinet
 - ✓ Rigid tapping
 - ✓ Ethernet, CF card and USB interface
 - ✓ Automatic lubrication system
 - ✓ Coolant system
 - ✓ Spindle cooling system
- ✓ LED working lamp
 - ✓ End of program light
 - ✓ Electronic handwheel (MPG)
 - ✓ Tool box
 - ✓ Leveling bolts and blocks
 - ✓ Coolant gun
 - ✓ Air gun
 - ✓ User manuals

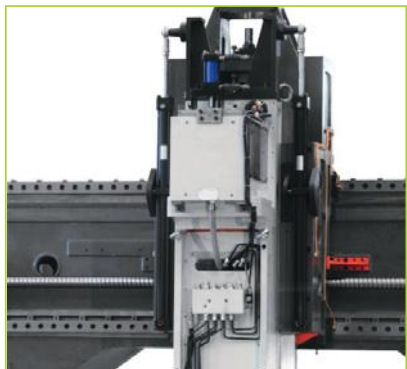
Optional configuration:

- 24 pocket arm tool changer
- Chip conveyor (two screw type and one chain type)
- Gear box

Technical Specifications		V2317	V3317
Table			
Table size	mm	2300 x 1500	3300 x 1500
T-slot (width x number x distance)	mm	22 x 8 x 150	22 x 8 x 170
Max. load	kg	8.000	10.000
Travel			
X/Y/Z Travel	mm	2300 / 1600 / 800	3300 / 1600 / 800
Spindle nose to table distance	mm	240 - 1040	
Spindle center to column distance	mm	1680	
Spindle			
Spindle taper	-	SK50 / BT50 / CAT 50	
Spindle servo motor	kW	22 / 60 Siemens, 22 / 26 Fanuc	
Spindle speed	min ⁻¹	6.000	
Spindle transmission		direct drive	

Technical Specifications		V2317	V3317
Feed			
Rapid feed	m/ min	15 / 15 / 12	
Cutting speed	mm/ min	1-10.000	
Tool changer			
Number of tools	pcs.	24 (option)	
Max. tool length	mm	400	
Max. tool diameter	mm	120 / 250 (next release)	
Max. tool weight	kg	15	
Accuracy (VDI 3441 Full travel)			
Positioning accuracy	mm	0.016	0.019
Positioning repeatability	mm	0.013	0.015
Dimensions & weight			
Dimensions	mm	6700x4700x4550	8700x4700x4550
Weight	kg	24000	26000

- Extra wide column to increase to connection surface with the crossbeam to avoid vibration during cutting
- All axes are moved by high quality precision gear box to ensure high torque and rigidity during movement (V3317 on all axes and V3025 / V4025 on X axis)
- Roller type linear guideway, which offers super high rigidity and loading capacity
- Hydraulic balancing system on Z axis



Hydraulic balancing system



Gear drive



Chip conveyour

Technical Specifications		V3025	V4025
Table			
Table size	mm	3000 x 2100	4000 x 2100
T-slot (width x number x distance)	mm	28 x 9 x 220	
Max. load	kg	8.000	10.000
Travel			
X/Y/Z Travel	mm	3000 / 2500 / 1000	4000 / 2500 / 1000
Spindle nose to table distance	mm	105 - 1105	
Spindle center to column distance	mm	2480	
Spindle			
Spindle taper	-	SK50 / BT50 / CAT 50	
Spindle servo motor	kW	22 / 60 Siemens, 22 / 26 Fanuc	
Spindle speed	min ⁻¹	6.000	
Spindle transmission		direct drive	

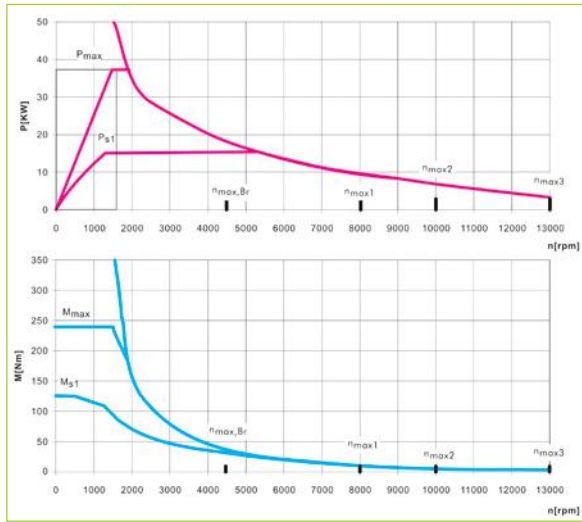
Technical Specifications		V3025	V4025
Feed			
Rapid feed	m/ min	12 / 12 / 10	10 / 12 / 10
Cutting speed	mm/ min	1-10.000	
Tool changer			
Number of tools	pcs.	24 (option)	
Max. tool length	mm	400	
Max. tool diameter	mm	120 / 250 (next release)	
Max. tool weight	kg	15	
Accuracy (VDI 3441 (Full travel))			
Positioning accuracy	mm	0.018	0.025
Positioning repeatability	mm	0.015	0.020
Dimensions & weight			
Dimensions	mm	7800x5300x4950	9800x5300x4950
Weight	kg	29000	33000

* The above specifications are subject to change without prior notice, no liability for mistakes. Machines may be shown with optional equipment.

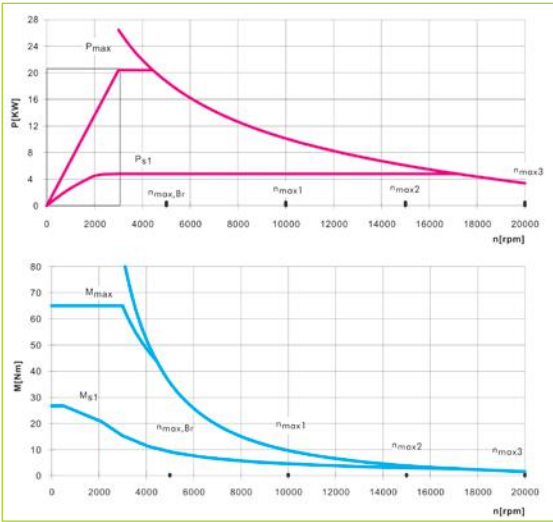
* The above specifications are subject to change without prior notice, no liability for mistakes. Machines may be shown with optional equipment.

Torque charts / Standard Siemens

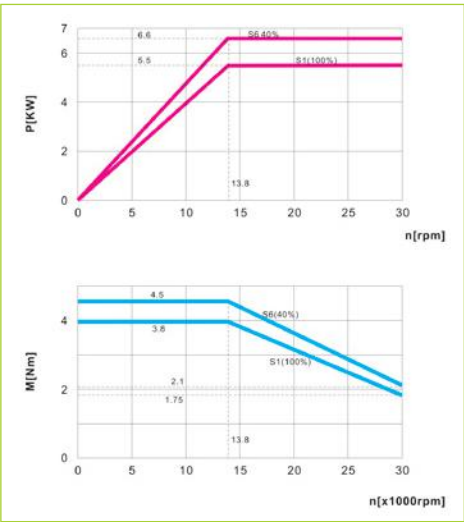
VF1100 · 1300 / Alpha Center V13L · V15L / Power Center V11



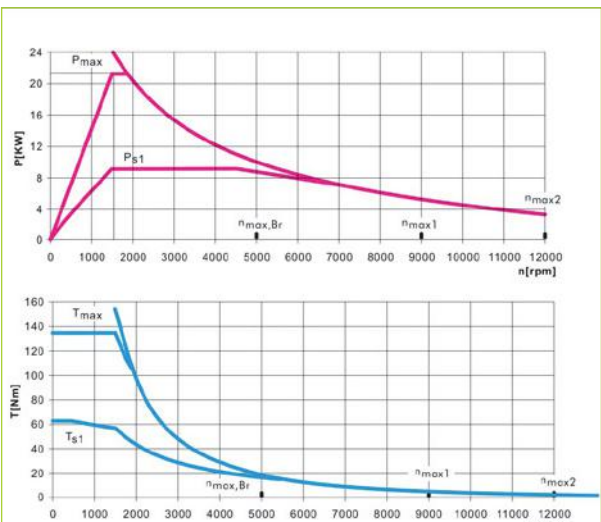
Mini Center / Delta Center T6 · T7



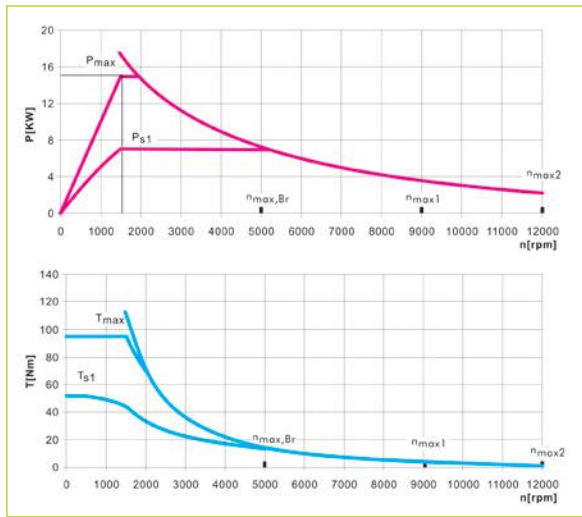
High Speed Double Column Center V65HS



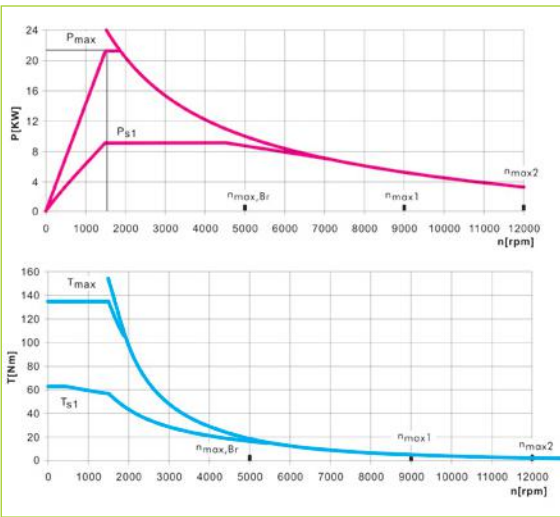
High Speed Double Column Center V1613HS



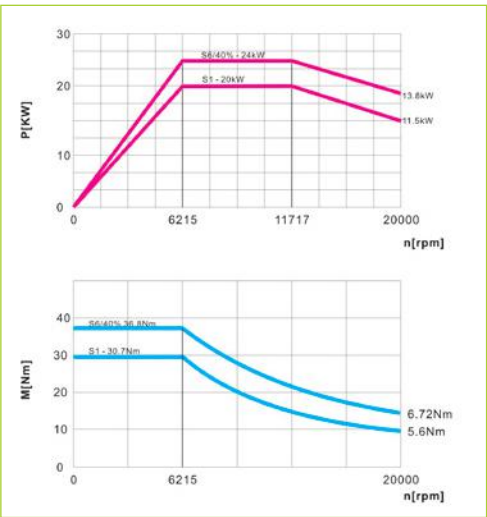
Delta Center V6L



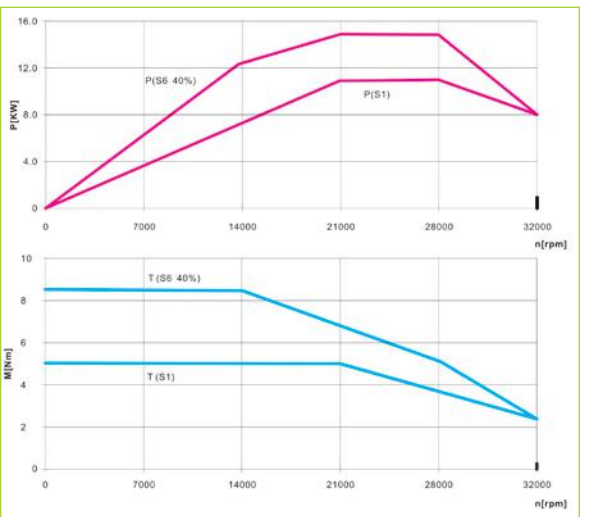
VF760 · 900 / Delta Center V10L / Alpha Center V7L · V9L · V11L



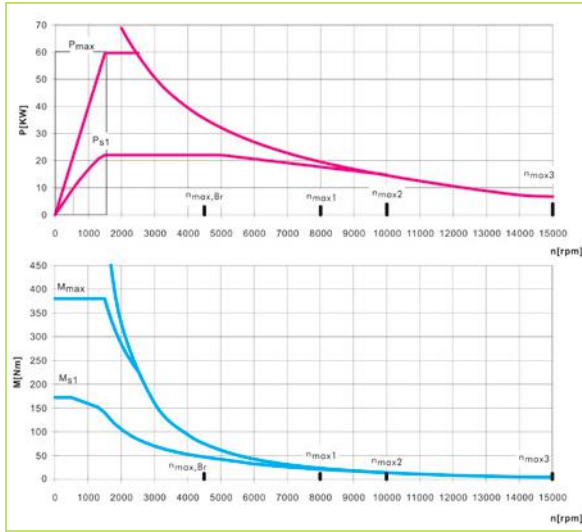
VF760M · 20000 rpm · HSK A63



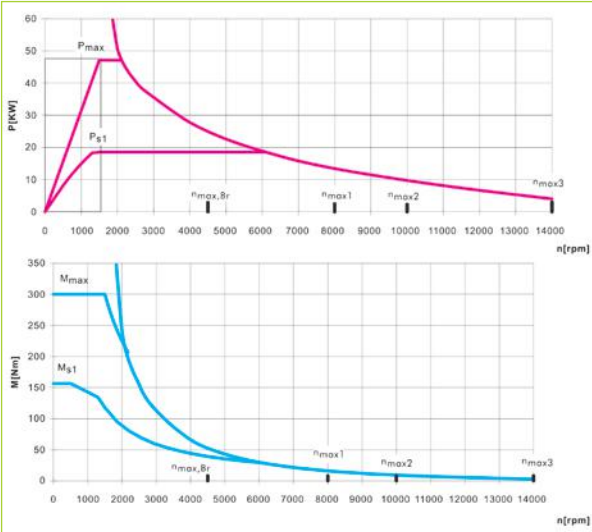
VF760M · 32000 rpm · HSK A63



Double Column Center V2317 · V3317 · V3025 · V4025



Power Center V18



* The above specifications are subject to change without prior notice, no liability for mistakes. Machines may be shown with optional equipment.

* The above specifications are subject to change without prior notice, no liability for mistakes. Machines may be shown with optional equipment.

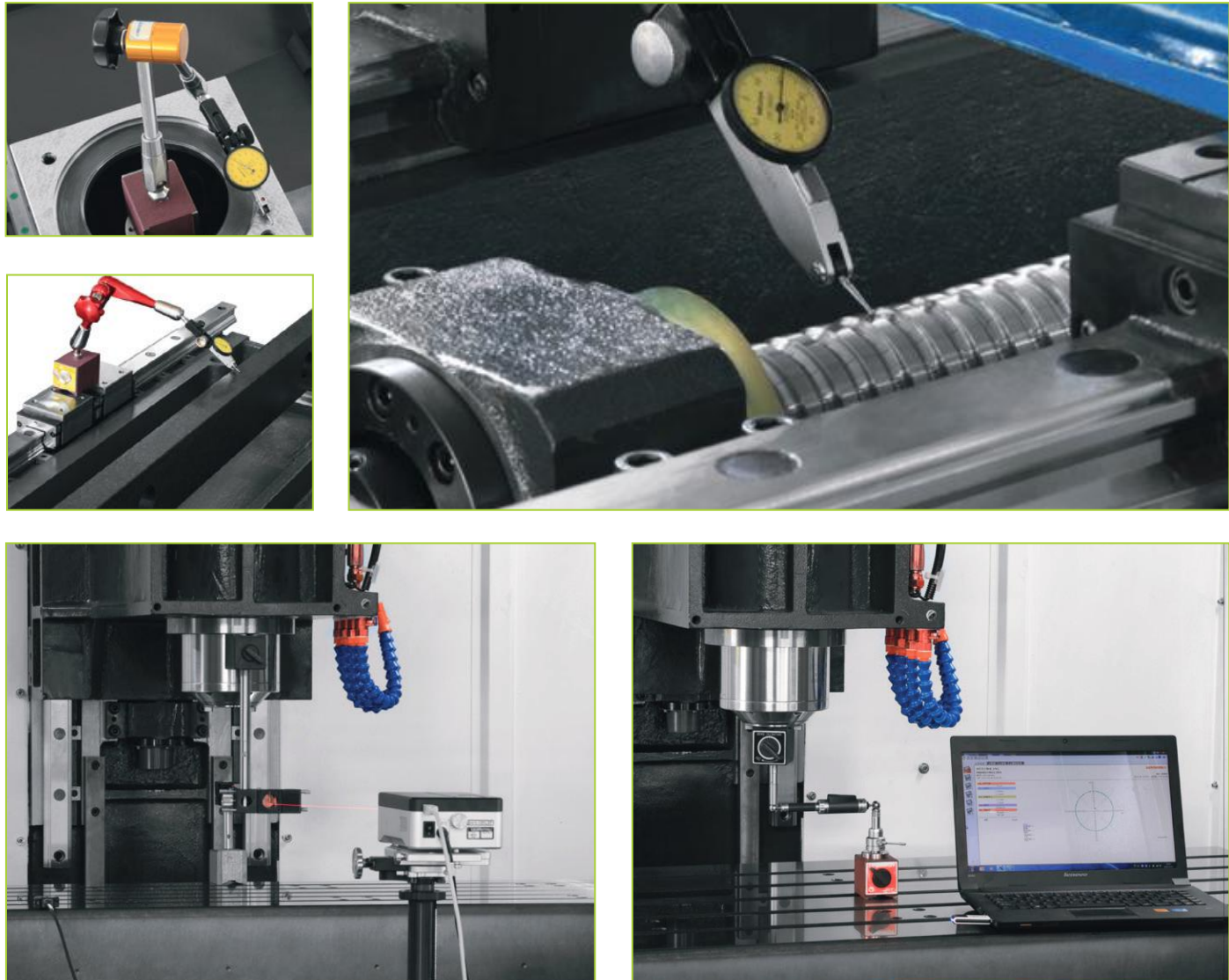
Machine structure



High quality machine components



Measurements control during the producing

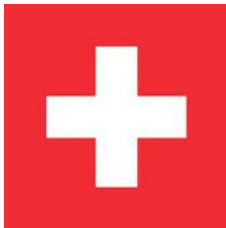


Hand scraping



* The above specifications are subject to change without prior notice, no liability for mistakes. Machines may be shown with optional equipment.

* The above specifications are subject to change without prior notice, no liability for mistakes. Machines may be shown with optional equipment.



pl LEHMANN®



TJR®
Rotary table



* The above specifications are subject to change without prior notice, no liability for mistakes. Machines may be shown with optional equipment.

* The above specifications are subject to change without prior notice, no liability for mistakes. Machines may be shown with optional equipment.

Siemens Sinumerik 828D

Turning and milling operations on standardized machines as well as functions for the easy automation of grinding machines – this where SINUMERIK 828D ADVANCED, SINUMERIK 828D and SINUMERIK 828D BASIC, with their unique CNC performance, set standards regarding productivity.

Milling on standardized machines – SINUMERIK 828 CNCs are setting the benchmark with their unique CNC performance.

Features

- ✓ Panel-based compact CNC
- ✓ Technologies: Turning, milling, grinding functions
- ✓ Up to 10 axes/spindles + 2 auxiliary axes
- ✓ Up to 2 machining channels
- ✓ 10.4" color display / 15.6" touch display
- ✓ S7-200 PLC based

Rugged

An operator panel front made of magnesium die cast, the panel-based CNC design with well-conceived interfaces, as well as the high degree of protection IP 65 make the SINUMERIK 828 controls a reliable partner even in harsh environments.

Maintenance-free

Thanks to the configuration without fan or hard disk and the NV-RAM storage technology without back-up battery, the SINUMERIK 828 controls are completely maintenance free.

Intelligente User-friendly

Thanks to a fully fledged QWERTY CNC keyboard with short stroke keys and a high-resolution 10.4" TFT color display / 15.6" touch display, the SINUMERIK 828 controls can be easily operated. The USB, CF card (only 10.4") and RJ45 interfaces on the operator panel front allow to quickly transfer the CNC data in an uncomplicated manner.



FANUC 0i MF

The CNC series 0i model F provides the ideal basic solution for multiple control applications. Ready to use, it boasts latest generation hardware and a complete package of standard software. To maximise productivity on more specific applications, it can be easily customised using a range of additional functions. Combining unbeatable value for money with unrivalled performance and reliability, it includes features and functions usually associated with high performance systems.

Key features:

- ✓ up to 12 axes, 6 spindle axes and 2 paths
- ✓ up to 2 additional loader paths
- ✓ 4-axis simultaneous and 3+2 axis machining
- ✓ ready to use with integrated software package
- ✓ excellent performance-to-cost ratio
- ✓ integrated FANUC Dual Check Safety function
- ✓ shop-floor programming via MANUAL GUIDE i or TURN MATE i
- ✓ additional functions for simple customisation
- ✓ integrated high-speed PMC
- ✓ high speed and high quality machining package
- ✓ maximum look-ahead blocks 400
- ✓ common operability, maintainability, network and PMC function with CNC Series 30i-MODEL B



Heidenhain TNC 620

The TNC 620 is compact and easy to read. The TNC 620 is a compact but versatile contouring control for up to five controlled axes. Thanks to its flexible operating concept – workshop-oriented programmability with HEIDENHAIN conversational programming or off line programming – and its scope of features, it is especially suited for use on universal milling, drilling and boring machines for the following:

- ✓ Series and single-part production
- ✓ Toolmaking Machine building
- ✓ Research and development
- ✓ Prototypes and pilot plants
- ✓ Repair departments
- ✓ Training and education facilities

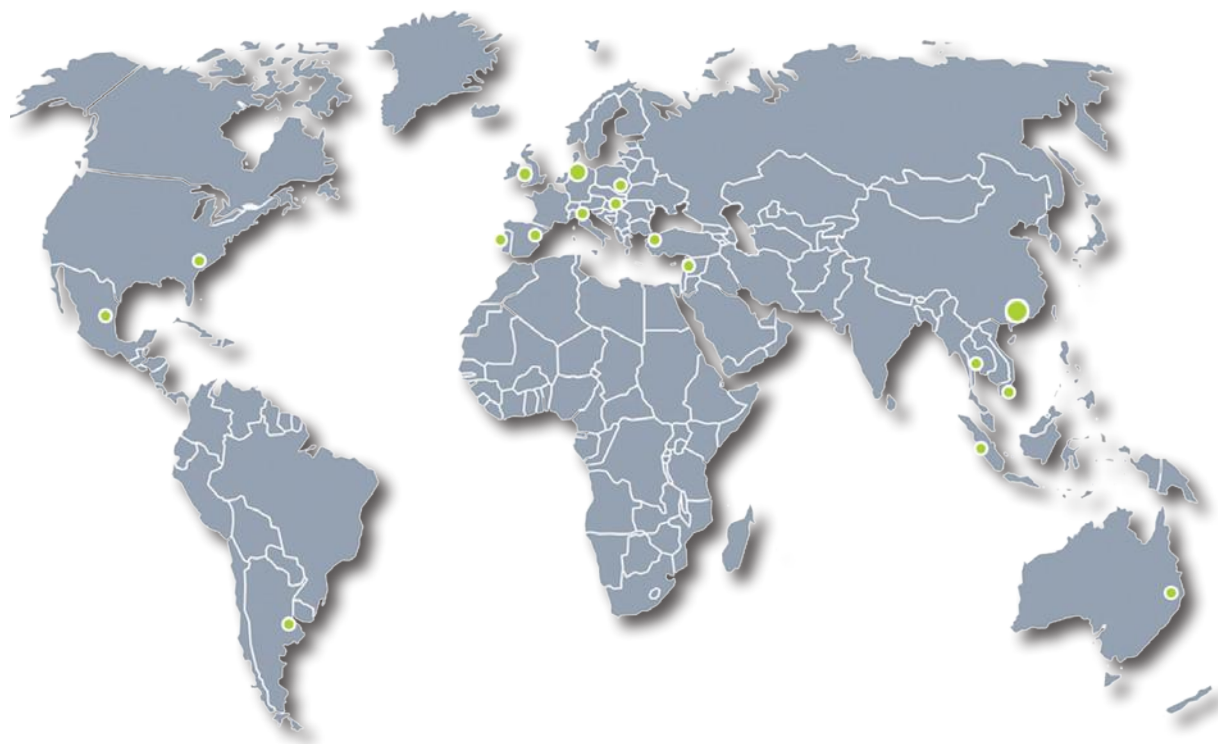
Universal milling machines

- ✓ Free contour programming
- ✓ Milling cycles for complex contours
- ✓ Fast presetting with HEIDENHAIN touch probe

Drilling and boring machines

- ✓ Cycles for drilling, boring and spindle alignment
- ✓ Cycles for linear and circular point patterns





PRIMINER Werkzeugmaschinen GmbH

Gadelander Str. 172 · D-24539 Neumünster / Germany

Tel: +49 (0) 4321-53 9946-0

Fax: +49 (0) 4321-25 20 03-90

E-mail: info@priminer.de

PRIMINER SOUTH EAST EUROPE · PRIMINER d.o.o. BEOGRAD

Vladimira Popovica 38-40 · GTC - 11070 Beograd / Srbija

Tel: +381 69 702 705

Fax: +381 11 715 69 00

E-mail: office@priminer.de

PRIMINER MACHINE TOOLS DONGGUAN CO., LTD

XinRuYi Industrial Park, Fuxing Road, Xingguang Village, Huangjiang Town, Dongguan, P.R.China

Tel: +86 769 838 490 61

Fax: +86 769 838 490 62

E-mail: export@priminer.com

www.priminer.de