



Rig-Grip



RIG-GRIP SAFETY PRODUCTS

SERVING THE OILFIELD



Tlf +47 51 54 28 00
+47 992 15 202
Fax +47 51 54 25 00
Finnestadsvingen 36,
4029 Stavanger.
salg@rubberstyle.com
www.rubberstyle.com



Rig-Grip® Safety Mats

Rig-Grip® Safety Mats are designed primarily for rig floor applications, most commonly used around the rotary table they provide superb traction and a sound footing in this notoriously hazardous area. Rig-Grip® Mats can also be found on adjoining deck and setback areas and offer superb levels of traction even in the most hazardous of conditions.

Each mat is custom moulded and incorporates SafetyGrip's high traction studded surface, thus providing an excellent non-slip working surface.

Rotary applications typically consist of a 32mm (1¼") thick mat - this provides sufficient strength, durability and traction to handle even the heaviest of workloads.

General deck areas are usually 20mm (¾") thick, this provides adequate traction and slip protection for hazardous areas whilst helping keep cost down.

KEY FEATURES

- High Traction Anti-slip Surface
- Exceptional Tensile Strength/ Anti-Abrasion
- Grooved Surface for Positive Drainage
- Easy Installation
- Chemical and Corrosion Resistant
- Long Term Durability
- High Visibility Colours
- Hazard Identification
- Company Logos/Rig names
- Unmatched Impact Resistance

Rig-Grip® Mats are proven to reduce the hazards of slip, trip and falls on the Drill Floor



SPECIFICATION

Rig-Grip® Mats are manufactured in-house at our Aberdeen facility, each mat is custom made and configured to our customer's exact specifications, thus ensuring an accurate fitment to your rig floor.

Rig-Grip® Mats are individually manufactured using high quality custom blended urethanes to ensure superior chemical, fire, tear and abrasion resistance.

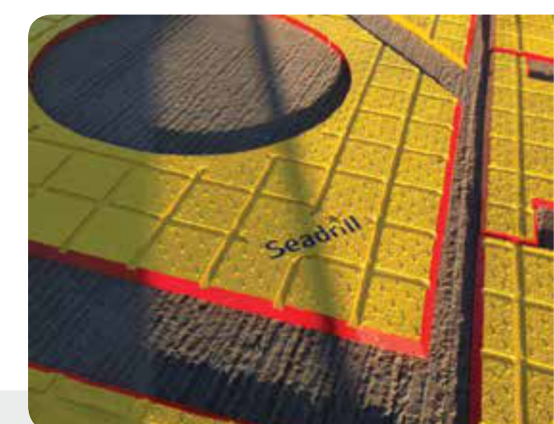
Each mat can be coloured to your choice and incorporate various safety messages and slogans which are embossed into the surface, rig name and company logo are common place.

Technical Specification

Shore hardness	33D/A90	DIN EN ISO 868
Tensile strength	8.0 MPa	DIN 53455
Elongation at break	280%	DIN 53455
Tear resistance	22 N/mm	DIN 53356
Linear thermal expansion coefficient	110 10 ⁻⁶ K ⁻¹	DIN 53752
Grip Test results	0.95	Coefficient of friction (CoF)
Temperature range	-35°C to +95°C	-35°F to +200°F

Service

Unsure how to measure or size your mats? Please drop our technical team a line and they can assist you through the process - additionally we have field engineers who can undertake site surveys and inspection.





Rig-Grip® Setback Mats

Rig-Grip® Setback Mats are designed primarily for the pipe racking areas on the rig floor, they are commonly used to enhance pipe handling capabilities and reducing tripping time, most importantly they provide a safe surface for personnel to undertake their duties.

Rig-Grip® Setback Mats are designed to accommodate maximum fluid run-off, this is provided through the pre-moulded directional channels across the surface of the mat, moulded using high density polymers these heavy duty mats are designed to accommodate the heavy loads associated with drilling equipment, including various sized drill strings/ collars/ casings/ down hole tools.

SPECIFICATION

Rig-Grip® heavy duty pipe matting is manufactured in-house at our Aberdeen facility using high quality chemical and fire resistant poly-urethane polymers. Each mat is custom moulded from 100% high density polymer, each mat incorporates fluid run-off channels and SafetyGrip's unique high traction surface, thus providing an excellent working surface.

Rig-Grip® Mats are proven to provide years of reliable service

KEY FEATURES

- Heavy Duty High Density Polymer
- Exceptional Tensile Strength/ Anti-Abrasion
- Grooved Surface for Positive Drainage
- Easy Installation
- Chemical and Corrosion Resistant
- Long Term Durability
- High Visibility Colours
- Hazard Identification
- Company Logos/ Rig names
- Unmatched Impact Resistance



Applications are typically 38mm (1½") thick - this mat provides sufficient strength, durability to handle even the heaviest of workloads. Each mat is custom made and configured to our customer's exact specifications, thus ensuring an accurate fitment to your rig floor. The added extra of high visibility colouring and customised embossed safety message add an extra dimension to the matting.

Technical Specification

Shore hardness	94A	DIN EN ISO 868
Tensile strength	24.0 MPa	DIN 53455
Elongation at break	395%	DIN 53455
Tear resistance	68.1 N/mm ²	DIN 53356
Linear thermal expansion coefficient	108 10 ⁻⁶ K ⁻¹	DIN 53752
Water Absorption	Less than 0.1%	
Temperature range	-35°C to +95°C	-35°F to +200°F

Rig-Grip® Setback Mats are fully customised and moulded to each rig application and weigh around 43kg per m².

Rig-Grip Safety Matting - Pipe Racking Mats Mat Thickness - 38mm (1½") High Density Polymer - Shore A 94 Hardness		
Kilogram Force/ Centimetre ² (KGF/ CM ²)	Pound Force/ Inch ² (IBF/ IN ²)	Notable Compression Under Loading
703	100	3%
1757	250	5.9%
3515	500	12.3%
5273	750	19.1%
7030	1000	24.9%
17570	2500	54.1%
35153	5000	60%



Rig-Grip® Pipe Mats

Rig-Grip® Anti-slip Pipe Mats are designed to assist with safe access onto pipe and tubular racking; Pipe storage racks are notorious hazardous areas where there is a high risk of potential injury. Rig-Grip® Pipe Matting Systems are designed to assist with prevention by removing the hazard and implementing a suitable flat non-slip surface for walking/working on. Rig-Grip® Pipe Mats are quick and easy to apply and will ensure your crew stay safe for longer.

Rig-Grip® Pipe Mat is designed so it can be laid directly on your pipe rack. Each mat is designed to be universal so they can be used at any point on the rack, place them either along the length of the pipe or across the width, each Pipe Mat has suitable strength to bridge pipe up to 18" OD. Rig-Grip Pipe Mat incorporates six hand holds to ensure they are easy to handle, apply and retrieve.

SPECIFICATIONS

Rig-Grip® Pipe Mats are manufactured using high quality chemical and fire resistance polymers, these lightweight mats are extremely robust and will offer long term durability. Using the Rig-Grip® high traction surface they will offer superb level grip even in the harshest of conditions.

KEY FEATURES

- High Traction Surface
- Ease of Use
- Lightweight
- Tough and Durable
- Chemical and Corrosion resistant
- High Visibility Colours



Size

STANDARD SIZES		WEIGHT	
1800mm x 450mm x 20mm	71" x 18" x 3/4"	17kg	37lbs
1250mm x 600mm x 20mm	48" x 24" x 3/4"	15kg	33lbs
Custom variations are also available upon request			

Technical Specification

Shore Hardness	33D/A90	DIN ISO 868
Tensile Strength	8.0 MPa	DIN 53455
Elongation at Break	280%	DIN 53455
Tear Resistance	22 N/mm	DIN 53356
Grip test results	0.95	(CoF) Coefficient of Friction
Temperature range	-35°C to +95°C	-35°F to +200°F

Rig-Grip® Pipe Chock

SafetyGrip Solutions manufacture a wide range of pipe chocks and supports for securing pipe and casing. These heavy duty PU rubber chocks are essential to ensure your pipe is racked securely and will not roll across your deck. Supplied in a number of standard sizes these high visible chocks will not crack and split like traditional wooden chocks, thus ensuring a safe securing system that can be used and re-used time and time again.





Rig-Grip® Walkway and Deck Mats

Rig-Grip® Anti-slip Walkway and Deck Mats are designed to be installed directly onto your walkways, decks and working areas throughout your installation, each mat offers superb levels of grip and traction even in the harshest of conditions. Rig-Grip® Walkway Mats can be installed without the need for fixings or fasteners and can be laid directly on to your deck, they are proven to be very quick and simple to install.

Rig-Grip® Walkway and Deck Mats are supplied in a number of sizes and interlocking formats; they can be used for walkways and escape routes or for larger machinery spaces. With the added feature of hi-visibility colour coding and safety marking they will prove to be a valuable asset to your facility.

SPECIFICATIONS

Rig-Grip® Walkway Mats are manufactured using high grade custom blended urethane polymers that ensure superior chemical, tear and abrasion resistance. These heavy duty mats incorporate our unique high traction surfaces that are proven to be extremely robust and will offer long term durability.

KEY FEATURES

- High Traction Surface
- High Visibility
- Tough and Durable
- Chemical and Corrosion resistant
- Excellent Tensile and Tear Strength
- Easy to Install
- Hazard indication and safety markings



Sizing

Rig-Grip® Walkway and Deck Mats are available in a multitude of sizes, surface grades and colours. Additional features like route marking with directional arrows, safety markings and warning symbols can be applied to the surface for additional safety.

Rig-Grip® Walkway and Deck Mats are typically manufactured with interlocking dove tail joints to keep each piece locked securely together, thus ensuring limited movement during ongoing operations.

Each mat is 12mm (½") thick and will weigh around 15kg per m² - customised variations are always available.

Technical Specification

Shore Hardness	33D/A90	DIN ISO 868
Tensile Strength	8.0 MPa	DIN 53455
Elongation at Break	280%	DIN 53455
Tear Resistance	22 N/mm	DIN 53356
Grip test results	0.95	(CoF) Coefficient of Friction
Temperature range	-35°C to +95°C	-35°F to +200°F



Rig-Grip® Monkey Board Matting

Rig-Grip® Anti-slip Monkey Board Mats are designed for monkey board platforms and walkways high up in the drilling derrick. Slips, trips and falls can be particularly hazardous especially when working at height therefore it is essential to provide high traction surfaces for personnel to go about their duties.

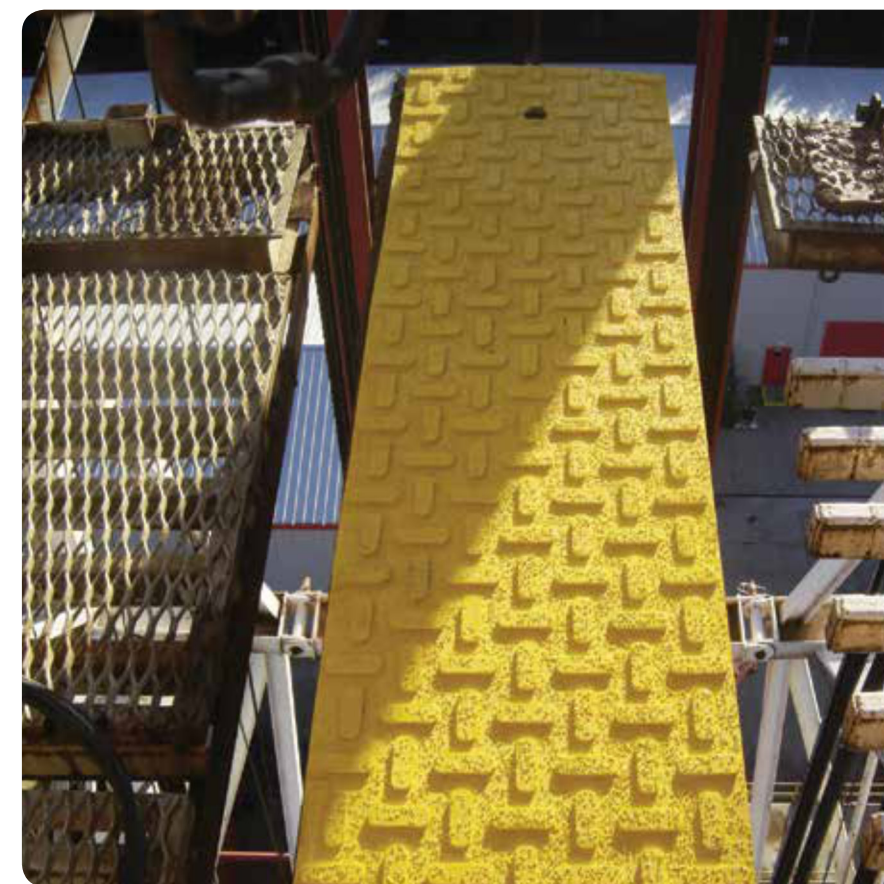
Rig-Grip® Monkey Boards Mats are designed to be quick and easy to install, with their unique high profiled surfaces will greatly increase levels of grip and traction whilst still remaining tough and durable even after many years of use. Rig-Grip® Monkey Board Mats are designed operate in the harshest of conditions.

SPECIFICATIONS

Rig-Grip® Monkey Board Mats are manufactured from high quality chemical and fire retardant elastomers, they are typically supplied to a thickness of 20mm and can be bolted to your walkway using conventional mechanical fixings and fasteners.

KEY FEATURES

- High Duty/High Traction Surface
- Excellent Impact Resistance
- Easy Installation
- Improved levels of safety
- Prevention of Slip, Trips and Falls



Size

Rig-Grip® Monkey Board Matting can be supplied in various standard sizes, with bespoke sizes and applications readily available.

STANDARD SIZES			
Metric	Imperial	Weight (kg)	Weight (lbs)
2440mm x 610mm	18' x 2' (96" x 24")	29.75	65.5
3048mm x 610mm	10' x 2' (120" x 24")	37.21	81.86

Colours

Rig-Grip® Monkey Board Mats can be supplied in a wide range of standard colours. Hazard identification marking can also be supplied on request.

Technical Specification

Shore hardness	90A	DIN EN ISO 868
Tensile strength	8.0 MPa	DIN 53455
Elongation at break	295 %	DIN 53455
Tear resistance	65.1 N/mm ²	DIN 53356
Linear thermal expansion coefficient	108 10 ⁻⁶ K ⁻¹	DIN 53752
Water Absorption	Less than 0.1%	
Temperature range	-35°C to +95°C	-35°F to +200°F





Rig-Grip

Safety Grip Solutions Limited
Unit 1 Cairnrobin Pipeyard
Marywell
Portlethen
Aberdeen
AB12 4SB
UK

info@safetygripsolutions.com
Tel: +44 (0)1224 784700
www.safetygripsolutions.com