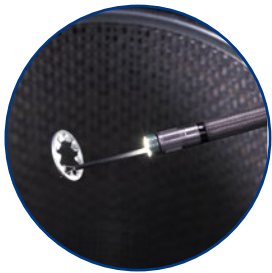


Remove Obstacles Keeping You Grounded

Internal Working Channel Scope for the IPLEX™ NX Videoscope



A Versatile Solution for FOD Removal and Visual Inspection

With similar functionality and capability as a standard insertion tube, the working channel scope is a useful backup while offering the versatility to use it to detect and remove foreign object debris (FOD). Don't get caught with a plane on the ground—add a working channel scope to your kit, so it's there when you need it.

- Interchangeable 6.2 mm (0.24 in.) diameter scope with internal working channel
- Six available internal retrieval tools
- Intensely-bright laser diode illumination and super wide field 3D stereo measurement

Find the Problem, Solve the Problem

Using a working channel scope requires dexterity, and this can be difficult if you're holding a bulky, heavy videoscope. The IPLEX™ NX videoscope working channel solution offers comfort and ergonomics, so you can focus on your work.



1. Stay Comfortable

The LCD touch screen detaches from the base unit so that you can position it where it's convenient and conduct a variety of inspection procedures from a comfortable position.

2. Stay Focused

The optional remote control makes it easy to control the working channel scope with one hand while you keep your eyes on the screen. You don't need to look away to access complicated controls—everything you need is in the simple handheld remote.

3. Reduce Wrist Fatigue

The lightweight (0.2 kg/0.4 lb) remote is easy to hold and position. With the detachable screen positioned in clear view and a remote that fits comfortably in one hand, you can use your other hand to manipulate the scope.

Scope Specifications

| Scope Diameter | Scope Length | Exterior | Tube Flexibility | Articulation Angle |
|-------------------|-----------------|--------------------------------|------------------|--------------------|
| 6.2 mm (0.24 in.) | 3.5 m (11.5 ft) | High-durability tungsten braid | Tapered Flex™ | 130° |

Optical Adaptor Specifications

| | AT80D-IV96X1N | AT120D/NF-IV96X1N | AT120D/FF-IV96X1N | AT80S-IV96X1N | AT120S-IV96X1N |
|-------------------|---------------|-------------------|-------------------|---------------|----------------|
| Field of View | 80° | 120° | 120° | 80° | 120° |
| Direction of View | Forward | Forward | Forward | Side | Side |
| Depth of Field | 35–∞ mm | 2–200 mm | 17–∞ mm | 30–∞ mm | 8–∞ mm |

Stereo Optical Adaptor Specifications

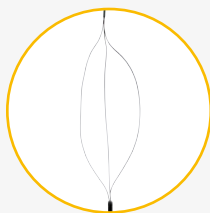
| | AT70D/70D-IV96X1N | AT60S/60S-IV96X1N |
|-------------------|-------------------|-------------------|
| Field of View | 70°/70° | 60°/60° |
| Direction of View | Forward/Forward | Side/Side |
| Depth of Field | 5–200 mm | 3–150 mm |

Internal Retrieval Tools

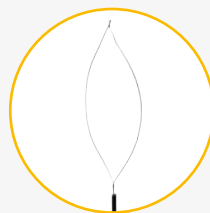
Six internal retrieval tools enable you to remove foreign objects and perform hook-and-drag inspections in aircraft engines.



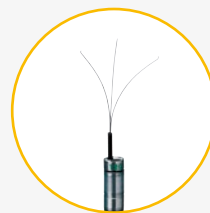
Alligator



Basket



Snare



Grasper



Magnet



Hook

www.olympus-ims.com

OLYMPUS

OLYMPUS CORPORATION
Shinjuku Monolith, 2-3-1 Nishi-Shinjuku, Shinjuku-ku, Tokyo 163-0914, Japan

OLYMPUS CORPORATION is ISO9001 and ISO14001 certified.
Olympus the Olympus logo, IPLEX, and Tapered Flex are trademarks of Olympus Corporation or its subsidiaries. Copyright 2020 by Olympus.

This product is designed for use in industrial environments for the EMC performance. Using it in a residential environment may affect other equipment in the environment.



E0440148EN