

Key Plant®

WELDING & POSITIONING EQUIPMENT

PIPE CUTTING AND BEVELLING EQUIPMENT



www.keyplant.com

© All rights reserved

Welcome to our latest Key Plant Cutting, Beveling and End Prep line catalogue. This updated brochure includes Key Plant split frames **KPA, KPE, KPP** and **KPH** models which covers 2" to 120" (50mm-3000mm) standard range of tube, pipe or vessel outside diameters.

Key Plant split frames can be set up to cut, bevel, cut and bevel simultaneously, counterbore, face and much more. Using the advanced accessories it is easy to change from cutting to counterboring or flange facing. It only takes a few minutes to interchange from one accessory to another.

The KPA low clearance split frame line covers the standard pipe range and larger can be manufactured on request. The Key Plant split frames are designed in house within our design department onsite in the UK. Key Plant split frames are easy to use and are designed for fast and easy set up. We offer 4 types to handle every situation, **pneumatic, hydraulic, electric** and the option of **servo-electric**.

With the design of the four product lines and advanced accessories, the split frames are the most modern, robust and technically advanced machines available on today's market.

Let's discuss your requirements, we will have a solution.

Over the years, customer's demands have changed and by working in collaboration with our long standing customers, Key Plant has continually developed a new range of split frames that are stronger and at the same time, lighter. This is possible by using new materials available on the market today.

Key Plant's split frames are faster due to integral designed gearboxes. Our split frames are easier to use because of their design, developed with machine operators remarks and needs out in the field, feeding this information back to our design team.

The KPA stands for quality at a competitive price. By constantly improving and testing new materials we were able to achieve new goals.

Key Plant has a one-stop, everything under one roof facility. We can react faster than others on special demands. At Key Plant, we stand for quality with more than 55 years experience and that reflects on our products, **we are the only manufacturer to give a 3 year warranty on our machines! Why?... because we are Key Plant, standing behind our products!**

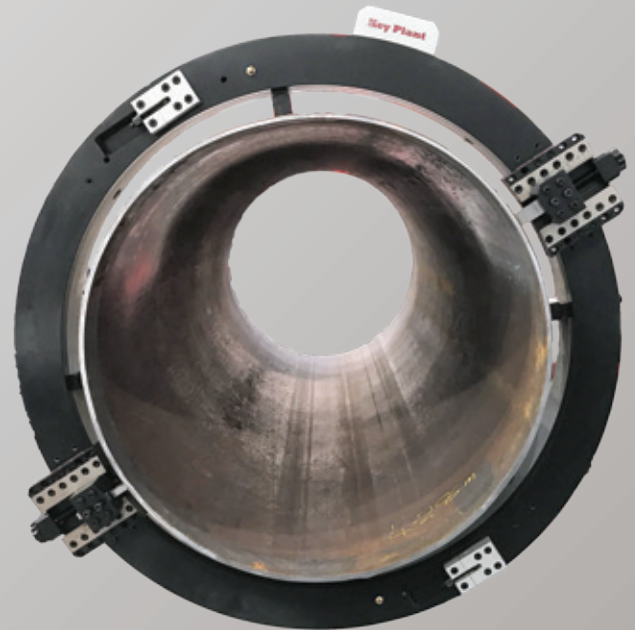
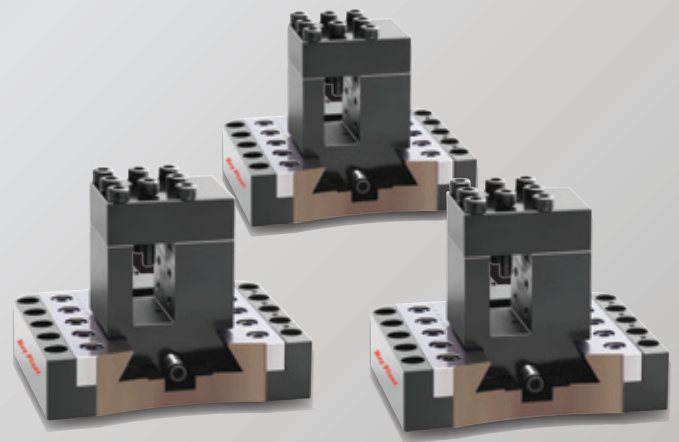


Welcome to Key Plant

The Key Plant split frames are manufactured with high grade aluminum, this makes them light but strong. All frames are hardened after machining. Our tool holders have clear readable measurement indicators so that you can easily follow the cutting or bevelling depth. Our striker system is designed to be crash free and there are multiple striker and motor positions. Our system can work with multiple motors to create a greater force for cutting high grade and special steels.

The Key Plant split frames **are further proof of innovations from the world leaders in welding automation with more than 55 years' experience in designing world-class machines.** It started with the design of manipulators and soon we developed and built equipment for major turnkey automation projects. In keeping with our tradition we are doing it again, setting the bar higher with our range of pipe preparation machines.

Key Plant OD mounted split frames are more than a cutting tool, they are part of a complete machining system designed to handle most applications.



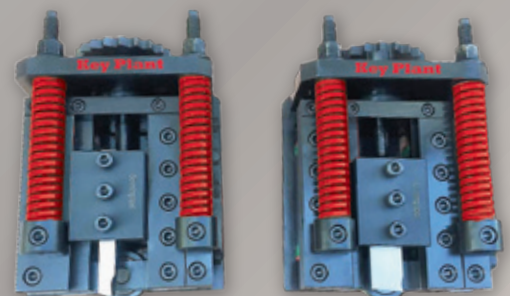
Flange Facing Option



Standard Cutting & Bevelling Tools for KPA Machines



Spring Loaded Toolbox



KPE SERIES ELECTRIC DRIVEN

Model	KPE2-6	KPE3-8	KPE6-12	KPE10-16	KPE14-20	KPE16-22	KPE18-24
Motor Power	1000W-2000W						
Voltage	220-240 V - 115 V						
Frequency	50 / 60HZ						
Working Current	6 A						
MAX Wall Thickness	≤30mm (Standard Tool Slide)						
Working Range in mm (ID-OD)	50-168	80-230	168-325	274-426	355-508	400-560	457-610
Working Range in inch (ID-OD)	2-6	3-8	6-12	10-16	14-20	16-22	18-24
Weight (KG)	40	45	55	60	75	80	85

Model	KPE20-26	KPE22-28	KPE24-30	KPE26-32	KPE30-36	KPE36-42	KPE42-48
Motor Power	1000W-2000W						
Voltage	220-240 V - 115 V						
Frequency	50 / 60HZ						
Working Current	6 A						
MAX Wall Thickness	≤30mm (Standard Tool Slide)						
Working Range in mm (ID-OD)	508-660	550-715	600-762	660-813	762-914	914-1066	1066-1230
Working Range in inch (ID-OD)	20-26	22-28	24-30	26-32	30-36	36-42	42-48
Weight (KG)	95	110	115	120	140	195	230

KPP SERIES PNEUMATIC DRIVEN

Model	KPP2-6	KPP3-8	KPP6-12	KPP10-16	KPP14-20	KPP16-22	KPP18-24
Air Pressure	0.6 - 0.8Mpa (Tested at entrance to motor)						
Air Consumption	1500 - 2000L/Min						
MAX Wall Thickness	≤30mm (Standard Tool Slide)						
Working Range in mm (ID-OD)	50-168	80-230	168-325	274-426	355-508	400-560	457-610
Working Range in inch (ID-OD)	2-6	3-8	6-12	10-16	14-20	16-22	18-24
Weight (KG)	41.5	42.5	53	60	77	79	85

Model	KPP20-26	KPP22-28	KPP24-30	KPP26-32	KPP30-36	KPP36-42	KPP42-48
Air Pressure	0.6 - 0.8Mpa (Tested at entrance to motor)						
Air Consumption	1500 - 2000L/Min						
MAX Wall Thickness	≤30mm (Standard Tool Slide)						
Working Range in mm (ID-OD)	508-660	550-715	600-762	660-813	762-914	914-1066	1066-1230
Working Range in inch (ID-OD)	20-26	22-28	24-30	26-32	30-36	36-42	42-48
Weight (KG)	96	114	116	120.5	144.5	197.5	236

HYDRAULIC DRIVEN KPH SERIES

Model	KPH2-6	KPH3-8	KPH6-12	KPH10-16	KPH14-20	KPH16-22	KPH18-24
Power Supply	380 - 440V 3Ph 50/60Hz						
Power	12.5Mpa - 2-60L/Min						
MAX Wall Thickness	≤30mm (Standard Tool Slide)						
Working Range in mm (ID-OD)	50-168	80-230	168-325	274-426	355-508	400-560	457-610
Working Range in inch (ID-OD)	2-6	3-8	6-12	10-16	14-20	16-22	18-24
Weight (KG)	41.5	42.5	53	60	77	79	85

Model	KPH20-26	KPH22-28	KPH24-30	KPH26-32	KPH30-36	KPH36-42	KPH42-48
Power Supply	380 - 440V 3Ph 50/60Hz						
Power	12.5Mpa - 2-60L/Min						
MAX Wall Thickness	≤30mm (Standard Tool Slide)						
Working Range in mm (ID-OD)	508-660	550-715	600-762	660-813	762-914	914-1066	1066-1230
Working Range in inch (ID-OD)	20-26	22-28	24-30	26-32	30-36	36-42	42-48
Weight (KG)	96	114	116	120.5	144.5	197.5	236

Cutting & Bevelling at any angle



KPI Line Fast, Easy Setup, Self-Centering Design

Key Plant **KPI** bevel machines are light weight, self-centering and easy to operate. The KPI range of bevel machines are designed for site and field work. Due to their innovative design, fast and high precise quality of the bevel, they can also be used in the workshop. The Key Plant KPI can be used to make any kind of bevel shape (V - J - compound - facing - counterbore - shape specific to your drawing). Due to the number of cutting tools, they can carry out operations simultaneously. Thanks to the new generation of high performance motors and innovative engineering, customers can easily bevel the most difficult materials, including super duplex. All KPI machines are supplied with variable speed motors to extend the lifetime of your cutting blades especially on hard materials. With a Key Plant conversion kit, you can convert the KPI's in minutes to a flange facing machine and with different shaft options you can extend the working range. Today, the Key Plant pipe bevelling machines are the fastest, strongest and most reliable machines on the market.

KPI SERIES

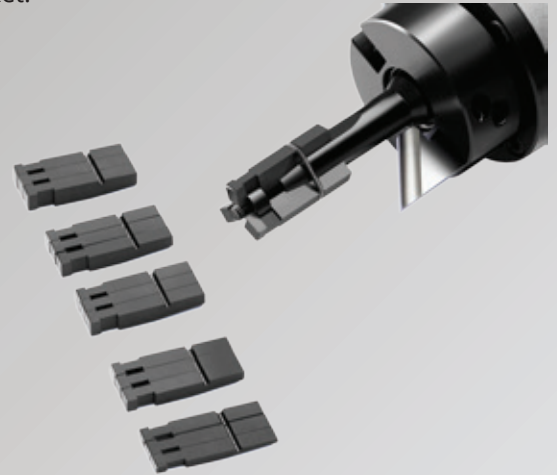
Multiple Key Plant technologies

Manufactured in the UK

Large stocks available for sales and rental

Strong, reliable and robust

Precise positioning and control



KPI1

The **KPI1** is a highly portable self-centering bevel machine, for use on an extensive range of pipe diameters. Thanks to the powerful motors, customers can easily bevel high alloyed, high performance materials. The KPI1 is able to clamp, on the inside of pipes from 0.5" (15mm) to 1" (25.4mm) *smaller shaft options are available*. Machines are available in three variations **pneumatic**, **electric** (110v or 230v) or **battery** powered (approved for spark free environment). Due to the optimum engineered design, expensive conversion kits between the motors are not needed. The KPI1 is designed in such a way that the customer can easily switch between different power options on location. The KPI1 can bevel up to 10mm wall thickness with the standard tool kit (optional kit to 15mm available). It incorporates a specific designed clamp changing system, that needs no external tooling to interchange between the different clamping diameters.

Model	KPI1-A	KPI1-E	KPI1-B
Driven	Pneumatic	Electric	Battery Driven
Power Supply	900L/Min - 0.6Mpa	110-220V 1Ph 50/60Hz	18V Battery
Clamping Range	15-25.4mm = 0.5"-1"	15-25.4mm = 0.5"-1"	15-25.4mm = 0.5"-1"
Wall Thickness	Max 10mm	Max 10mm	Max 10mm
Rotation Speed	75r/Min	1-75r/Min	15-35-75r/Min
Weight	6Kg	6Kg	5Kg
Tool Holders	2	2	2



The **KPI2** is a light weight, ergonomic, self-centering bevel machine, for use on an extensive range of pipe diameters. Due to the high-performance motors you can bevel the toughest of materials easily. The KPI2 is able to clamp on the inside of pipes from 1" (25.4mm) to 3" (79mm). *smaller or bigger shafts options are available.* Machines are available in three variations **pneumatic, electric** (110v or 230v) or **battery** powered (approved for spark free environment). Due to the optimum engineered design, expensive conversion kits between the motors are not needed. The KPI2 is designed in such a way that the customer can easily switch between different power options on location. The KPI2 can bevel up to 20mm wall thickness with the standard tool kit (optional kit to 35mm available). It incorporates a specific designed clamp changing system, and an **optional kit** with stainless steel clamping feet is available.

Model	KPI2-A	KPI2-E	KPI2-B
Driven	Pneumatic	Electric	Battery Driven
Power Supply	900L/Min - 0.6Mpa	110-220V 1Ph 50/60Hz	18V Battery
Clamping Range	25.4-79mm = 1"-3"	25.4-79mm = 1"-3"	25.4-79mm = 1"-3"
Wall Thickness	Max 20mm	Max 20mm	Max 20mm
Rotation Speed	75r/Min	1-75r/Min	15-35-75r/Min
Weight	13Kg	13Kg	12Kg
Tool Holders	3	3	3



OPTIONAL MILITARY QUALITY DUST AND WATER RESISTED IP67 STORAGE BOX FOR ALL MACHINES AND OPTIONS.



FOR THE HEAVIER MACHINES THEY COME WITH A DURABLE CASE WITH WHEELS AND PULL HANDLE.



KPI3

The **KPI3** is a powerful and light weight, self-centering bevel machine, for use on an extensive range of pipe diameters. Due to the optimum motor solution you can bevel high mechanical strength materials easily. The KPI3 is able to clamp on the inside of pipes from 2.3" (60mm) to 6.2" (159mm). *smaller or bigger shafts options are available.* Machines are available in three variations **pneumatic**, **electric** (110v or 230v) or **battery** powered (approved for spark free environment). Due to the optimum engineered design, expensive conversion kits between the motors are not needed. The KPI3 is designed in such a way that the customer can easily switch between different power options on location. The KPI3 can bevel up to 30mm wall thickness with the standard tool kit (optional kit to 45mm available). It incorporates a specific designed clamp changing system, and an **optional kit** with stainless steel clamping feet is available. Key Plant has a one-stop, everything under one roof facility, we can design special and bespoke bevelling heads for specific jobs on request.

Model	KPI3-A	KPI3-E	KPI3-B
Driven	Pneumatic	Electric	Battery Driven
Power Supply	900L/Min - 0.6Mpa	110-220V 1Ph 50/60Hz	18V Battery
Clamping Range	60-159mm = 2.3"-6.2"	60-159mm = 2.3"-6.2"	60-159mm = 2.3"-6.2"
Wall Thickness	Max 30mm	Max 30mm	Max 30mm
Rotation Speed	75r/Min	1-75r/Min	15-35-75r/Min
Weight	27Kg	27Kg	27Kg
Tool Holders	3	3	3



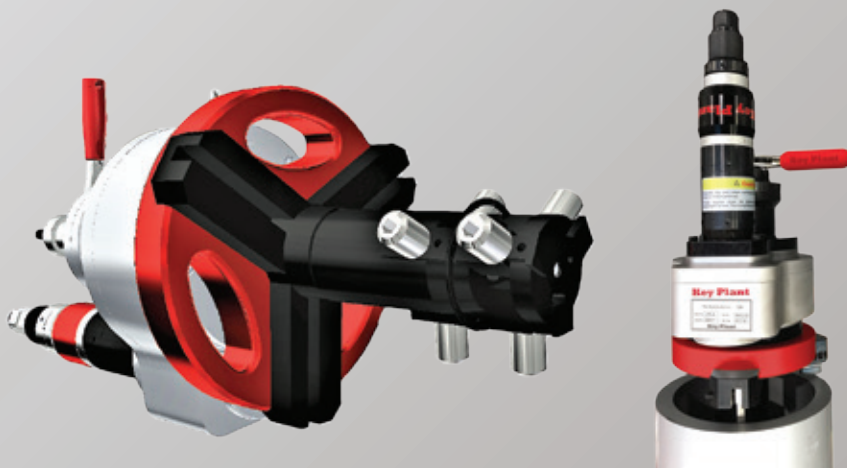
Standard Cutting & Bevelling tools for KPI1-KPI2-KPI3-KPI4-KPI5 Machines



KPI4

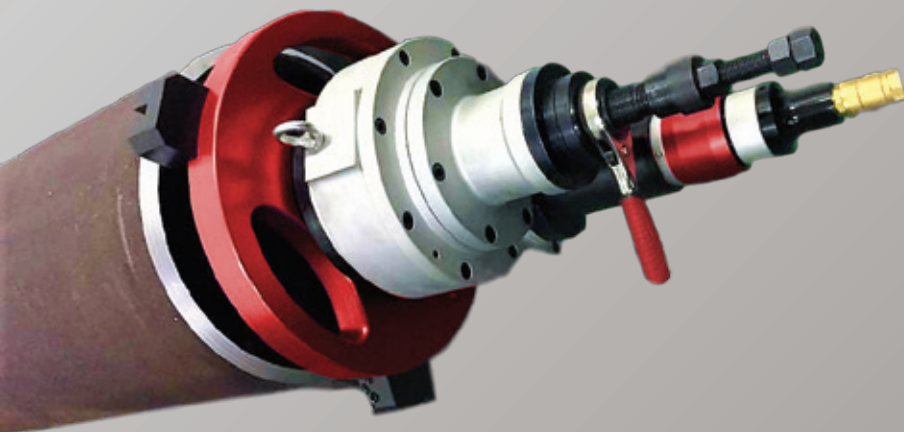
The **KPI4** is an extremely powerful self-centering bevel machine, for use on an extensive range of pipe diameters. Due to the high-performance motors you can bevel high corrosion resistance materials easily. The KPI4 is able to clamp on the inside of pipes from 2.5" (65mm) to 8.4" (215mm). *bigger shafts options are available to up 12"*. Machines are available in two variations **pneumatic** and **electric**. Due to the optimum engineered design, expensive conversion kits between the motors are not needed. The KPI4 is designed in such a way that the customer can easily switch between different power options on location. The KPI4 can bevel up to 40mm wall thickness with the standard tool kit (optional kit to 50mm available). It incorporates a specific designed clamp changing system, and **optional kits** for elbow and flange bevelling plus stainless steel clamping feet are available.

Model	KPI4-A	KPI4-E
Driven	Pneumatic	Electric
Power Supply	1200L/Min - 0.6Mpa	110-220V 1Ph 50/60Hz
Clamping Range	65-215mm = 2.5"-8.4"	65-215mm = 2.5"-8.4"
Wall Thickness	Max 40mm	Max 40mm
Rotation Speed	60r/Min	1-50r/Min
Weight	40Kg	38Kg
Tool Holders	3	3



KPI5

Model	KPI5-A	KPI5-E
Driven	Pneumatic	Electric
Power Supply	1200L/Min - 0.6Mpa	110-220V 1Ph 50/60Hz
Clamping Range	145-355.6mm = 5.7"-14"	145-355.6mm = 5.7"-14"
Wall Thickness	Max 40mm	Max 40mm
Rotation Speed	25r/Min	1-22r/Min
Weight	65Kg	63Kg
Tool Holders	3	3



The **KPI5** is the largest in the series of self-centering, internal bevel machines, for use on an extensive range of pipe diameters. Due to the optimum motor solution you can bevel the toughest of materials easily including duplex and super-duplex. The KPI5 is able to clamp on the inside of pipes from 5.7" (145mm) to 14" (355.6mm). *bigger shafts options are available to up 12"*. Machines are available in two variations **pneumatic** and **electric**. Due to the powerful and innovative engineered design, expensive conversion kits between the motors are not needed. The KPI5 is designed in such a way that the customer can easily switch between different power options on location. The KPI5 can bevel up to 40mm wall thickness with the standard tool kit (optional kit to 50mm available). It incorporates a specific designed clamp changing system, and **optional kits** for elbow and flange bevelling plus stainless steel clamping feet are available. Key Plant has a one-stop, everything under one roof facility, we can design special and bespoke bevelling heads for specific jobs on request.

KPO Series

The **KPO series** is a compact and precise piece of machinery, it is the fastest portable cutting and bevelling machine on the market, mainly used for high capacity throughput.

Lightweight

Self centering

Quick and easy set up

Aluminum housing

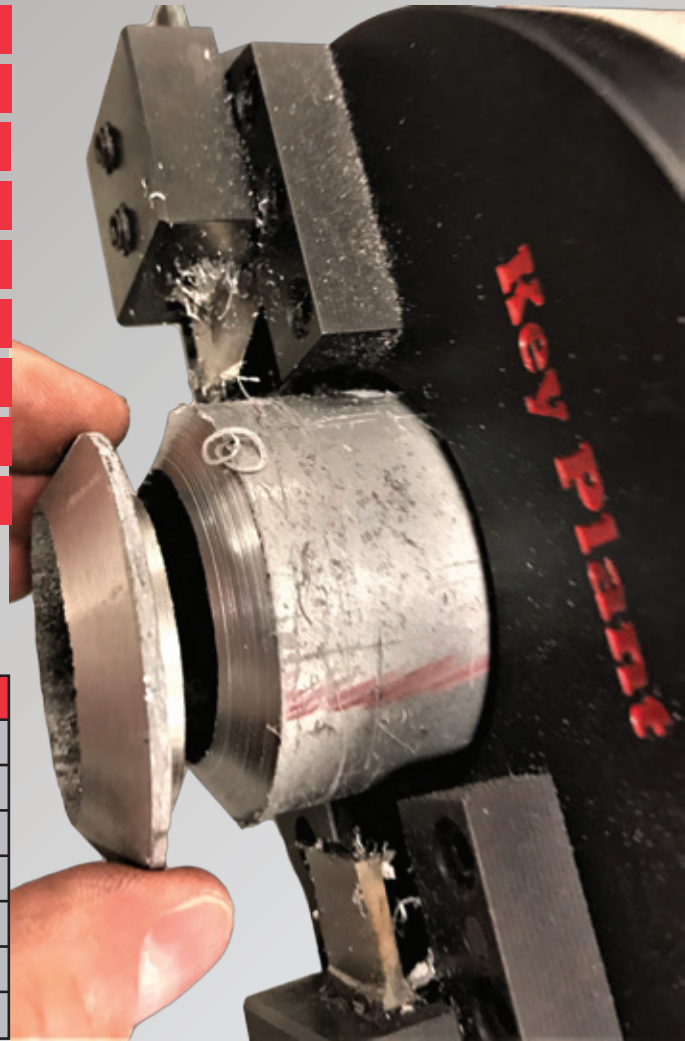
Strong and reliable

Easy to operate

Simultaneous cutting and bevelling

Automatic tool feed

Variable speed motor



Model	KPO1	KPO2
Driven	Electric	Electric
Power Supply	110-220V 1Ph 50/60Hz	110-220V 1Ph 50/60Hz
Clamping Range	14-63.5mm = 0.5"-2.5"	57-114.3mm = 2.2"-4.5"
Wall Thickness	Max 15mm	Max 15mm
Rotation Speed	30-130r/Min	30-130r/Min
Weight	10Kg	15Kg
Tool Holders	2	2



KPB series has been specifically designed for use in power plant engineering, construction, chemical industries, marine, shipbuilding and onsite repairs. It has the capacity to operate in confined spaces.

Ergonomic

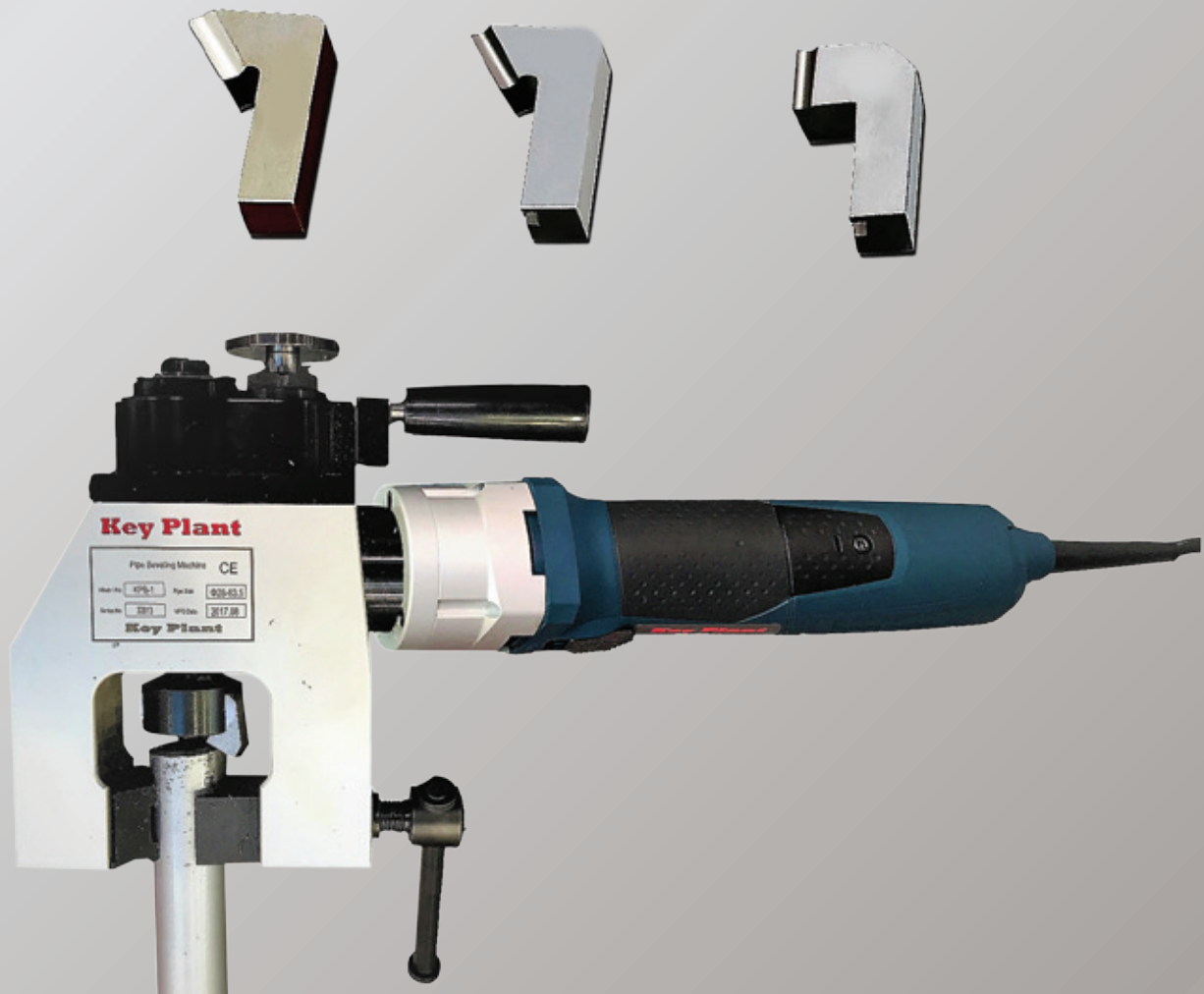
Automatic tool feed

Mobile

Optimum motor solution

Lightweight and powerful

Model	KPB1	KPB2
Driven	Electric	Electric
Power Supply	110-220V 1Ph 50/60Hz	110-220V 1Ph 50/60Hz
Clamping Range	28-63.5mm = 1.10"-2.5"	42-76.2mm = 1.65"-3"
Wall Thickness	Max 15mm	Max 15mm
Rotation Speed	85r/Min	85r/Min
Weight	10Kg	14Kg
Tool Holders	1	1



Key Plant specialises in the manufacture of multiple tooling technologies. Our scope includes in-house tooling design, simulation, engineering, manufacture, installation and on-site support. With multiple tooling options, material grades, carbide inserts, chip breakers for parting, external and internal grooving. Key Plant offers high productivity and long tool life, ensuring our customers produce high quality, high volume components.

Contact Key Plant, the complete pipe cutting and bevelling manufacturer.

Sizes stated are shown in metric, nearest imperial equivalent are for reference purpose only.



Key Plant

WELDING & POSITIONING EQUIPMENT

Head Office & Works

Bode Business Park
Ball Haye Green, Leek
Staffordshire, UK, ST13 6BW

Tel: +44 (0)1538 388 388
Fax: +44 (0)1538 381 509

Rental Warehouse

Regent Road
Liverpool
Merseyside, UK, L3 7DS

email: sales@keyplant.com
email: rental@keyplant.com
web: www.keyplant.com

