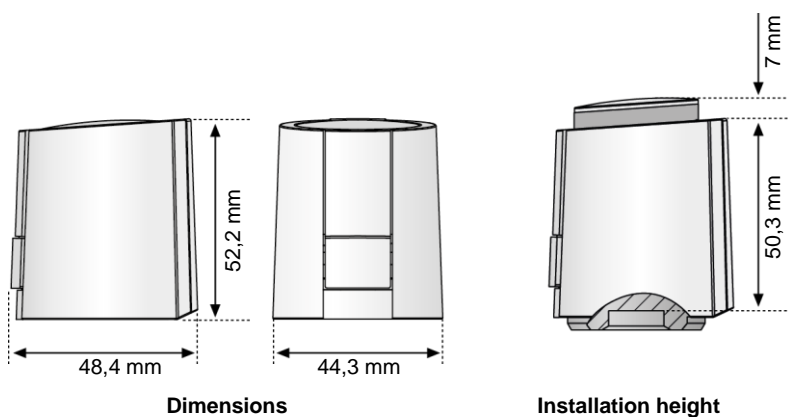


3 Technical Informations

Operating voltage	230 V AC, +10%...-10%, 50/60 Hz	
Max. inrush current	< 550 mA during 100 ms max.	
Operating power	1 W ¹⁾	
Stroke (actuator travel)	4.0	
Actuating force	100 N +5 %	
Fluid temperature	0 to +100°C ²⁾	
Storage temperature	-25°C to +60°C	
Ambient temperature	0 to +60°C	
Degree of protection	II	
Type of protection	IP 54 ³⁾	
CE conformity according to	EN 60730	
Housing material/housing colour	Polyamide / light grey (RAL 7035)	
Connecting cable/colour	2 x 0.75 mm ² PVC / light grey (RAL 7035)	
Cable length	1 m	
Weight with connecting cable (1 meter)	100 g	1) measured with precision reference instrument LMG95
Surge protection according to EN 60730-1	2.5 kV	2) in dependence of the adapter even higher
		3) in all installation positions

3.1 Dimensions



3.2 Certificates



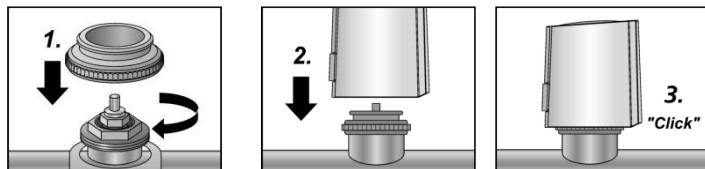
The Actuator is certified by TÜV Süd.



4 Installation Notes

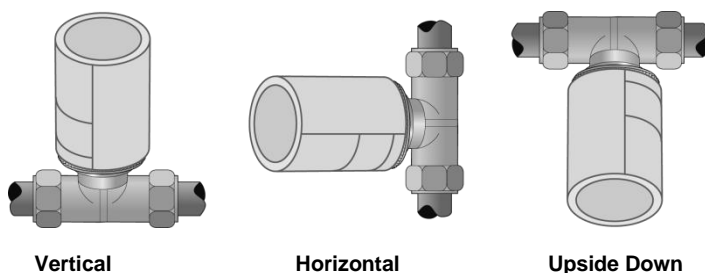
4.1 Installation with Valve Adapter

The wide selection of valve adapters guarantees a perfect match of the Actuator to almost any valve bottom or manifold available on the market. Simply snap-on the Actuator to the manually pre-installed valve adapter.



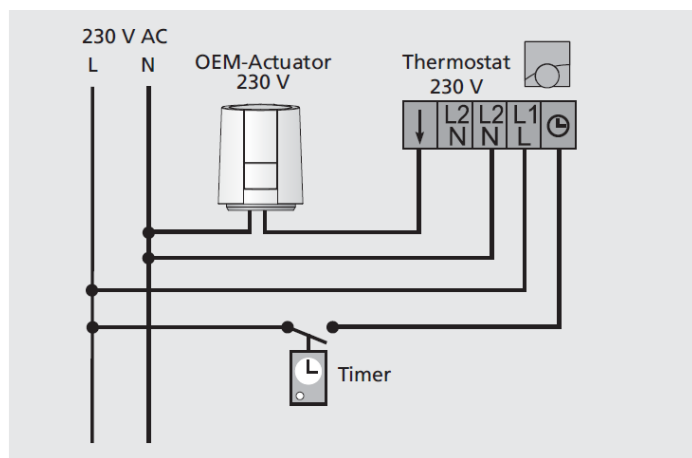
- First the valve adapter is screwed on the valve manually
- The Actuator is placed vertically on the valve adapter.
- The Actuator snaps onto the valve adapter with a “click” when pressed down vertically by hand.

4.2 Installation Positions



Preferred installation position of the Actuator is vertical or horizontal. An upside down position may reduce product life through special circumstances (e.g. contaminated water).

4.3 Electrical Installation



We recommend usage of the following lines for installing a 230 V system:

- Light plastic-sheathed cable NYM 1.5 mm²
- Flat webbed building wire NYIF 1.5 mm²

Technical changes reserved. Reprint, in whole or in part, only with permission of Pettinaroli A/S Denmark