



Jarocińska Fabryka Obrabiarek S.A.



FR Series



Jarocin Machinetools Factory Shares Company

PL 63-200 Jarocin, Zaciszna 14, Tel. +48 62 747 26 01, Fax +48 62 747 27 15

www.jafo.com.pl, e-mail: jafo@jafo.com.pl

Special equipment - options

- Universal dividing head FJNb250
- Vertical and askew milling head FRx
- Universal 2 plane swivel milling head FRz
- Slotting attachment FRj
- Indexing round table FMB250
- Plain machine vice 160mm jaws width
- Swivelling base machine vice 160mm jaws width
- Inclinal machine vice 160mm jaws width
- Optic electronical digital read out kit with linear scales
- Quick hydraulic tool clamping system for horizontal spindle
- Quick hydraulic tool clamping system for vertical spindle(head J2)
- Foundation bolts or vibration absorbing pads for machine

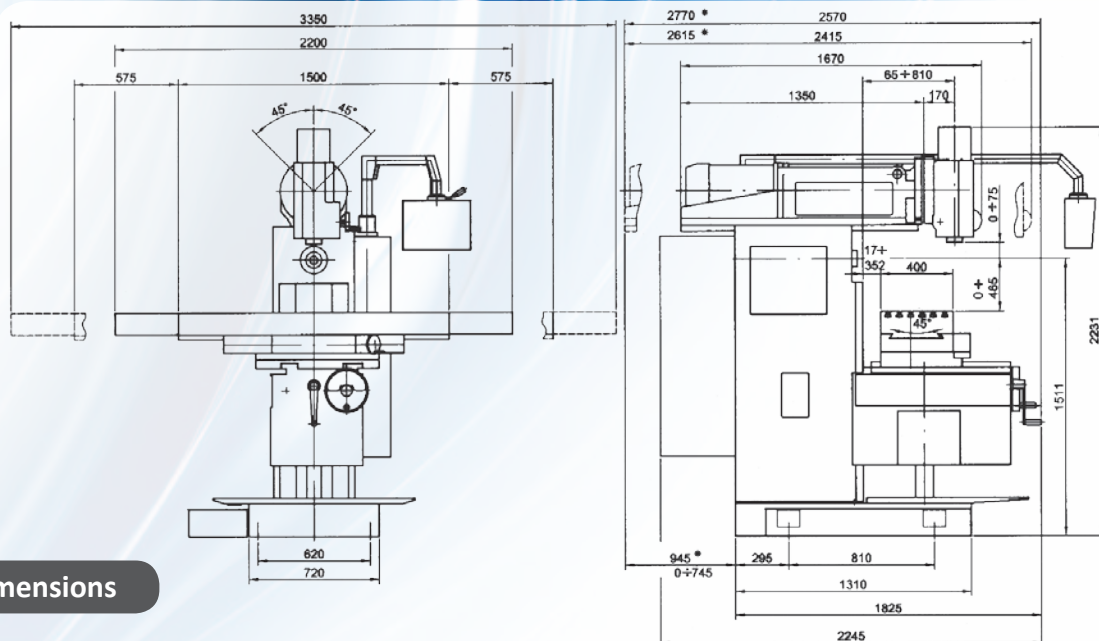
Standard equipment

- Spindle splash guard
- Coolant splash tray
- Overarm slide out crank
- Milling arbor support steady
- Machine lamp
- Ball screws for realization of lengthwise and crosswise feeds
- Mechanical and mobile documentation
- Set of service spanners

Technical data

TECHNICAL DATA	UNIT	FWR40	FWR40J2,FWR40JU2	FYR40J2,FYR40JU2
TABLE:				
Table working area	mm	400x1400	400x1400	400x1400
T-slots (number-width-spacing)	mm	6-18-63	6-18-63	6-18-63
MAXIMAL FEED OF THE TABLE:				
Lengthwise		1150	1150	1150
Crosswise	mm	335	335	335
Vertical	mm	465	465	465
RAPID FEEDS:				
Lengthwise		3200	3200	3200
Crosswise	mm/min	3200	3200	3200
Vertical	mm/min	950	950	950
RANGE OF FEEDS:				
Number of degrees for feeds		stepless	stepless	stepless
Lengthwise		10 - 3000	10 - 3000	10 - 3000
Crosswise	mm/min	10 - 3000	10 - 3000	10 - 3000
Vertical	mm/min	3 - 900	3 - 900	3 - 900
SPINDLE:				
Horizontal spindle tip		50/40	50/40	-
Number of degrees for the horizontal spindle	ISO	16	16	-
Ranges of horizontal spindle revolutions		56+1800	56+1800	-
Vertical spindle tip	rpm	-	50 (J2), 40 (JU2)	-
Number of degrees for the vertical spindle	ISO	-	stepless	stepless
Ranges of vertical spindle revolutions		-	70+2500/70+2100	70+2500/70+2100
Head swivel angle	rpm	-	±45° (J2), -30°+±120°±90° (JU2)	-
Quill slide out stroke		-	75/100	75/100
MOTORS:				
Horizontal spindle		7,5	7,5	-
Vertical spindle	kW	5,5	5,5	5,5
Feeds	kW	16,5	16,5	16,5
Coolant small pumps	Nm	0,125	0,125	0,125
Machine weight	kW	3200	3600	3400
Max. workpiece weight with tooling fixture	kg	450	450	450
Milling machine overall dimensions (LxWxH)	kg	2200x2500x2400	2200x2500x2400	2200x2500x2400

FWR40/FWR40J2, FWR40JU2
/FYR40J2, FYR40JU2



Overall dimensions