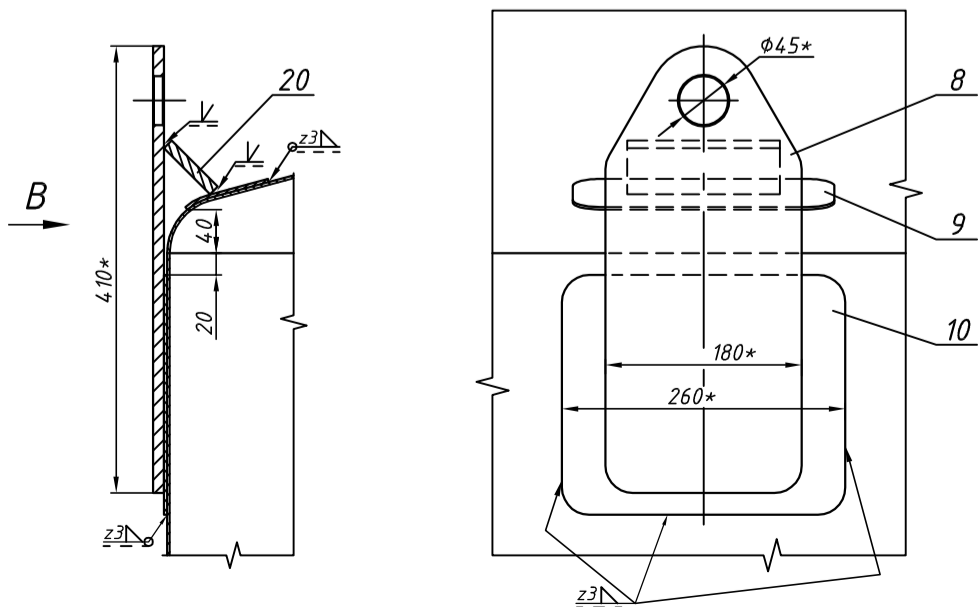


I (1:5)
A2

B (1:5)
A2



- 1.*For information only.
2. Non mentioned tolerances - holes H16, shafts h16, other $\pm IT16/2$.
3. Not mentioned surface roughness $Ra 12,5 \mu\text{m}$.
4. Mark (punched in) tanks serial numbers (acc. to customer): Vxxx - V yyy

Welding data		Welds		Nondestructive examination				Remarks	
		Longitudinal welds	0,7	VT 100%					
		Circumferential welds	0,7						
		Other welds	0,7						
Quality level for vessel weldings seams defects - C acc. LST EN ISO 5817 : 2014 requirements									
Nozzle data	Nº	Description	Q-ty	Positioning	Flange		Type	Remarks	
					SMS/DN	PN	ASME / DIN		
	N1	Manhole	1	180°					415x515
	A2	Lifting lugs	2	90°; 270°					
A3	Legs	4	45°; 135°; 225°; 315°				$\phi 219,1 \times 3,0$		
Material data	Description				Tank				
	Shell and top head				1.4301 EN 10088-2				
	Bottom head and outer room				1.4301 EN 10088-2				
	Supportes				1.4301 EN 10217-7				
	Nozzle pipes								
	Nozzles								
	Seals								
	External bolts & nuts								
	Internals								
Reinforcement plates									
VTM-15.1.00.000SB									
Tank 15 m³								770	1:20
								Rev.0	ACMM.DK
								21.03.20	

Origin. inv. Nr. Parašas ir data
 Vietoj. inv. Nr. Dublik. inv. Nr. Parašas ir data