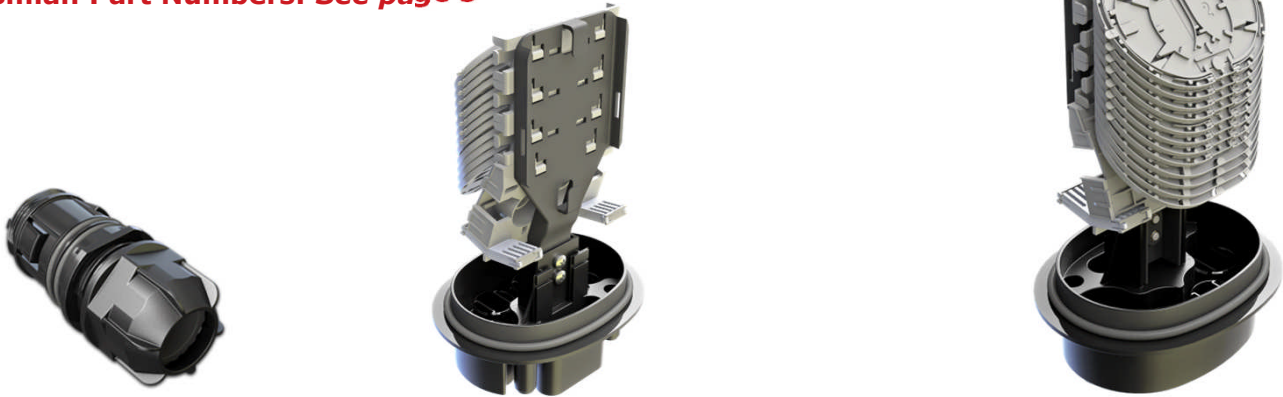


## Compact Multi-Function Joint - CMJ

**Prysmian Part Numbers: See page 3**



The Compact Multi Function Joint (CMJ) is for jointing optical fibre cables. The joint is ideal for use as a Cable Chamber Joint, Track Joint, Spur Joint or Distribution Joint due to its capacity and compact size. It has a maximum capacity of 144 fibres. The splice trays are factory fitted and each tray can accommodate up to 12 spliced fibres. A multi-functional bracket can be supplied with the joint which enables wall or pole mounting of the joint vertically or horizontally. The joint has four circular ports for mechanical entry glands, one oval port for heat shrink entry and two additional small circular ports also for heat shrink entry.

### Features and Benefits

- An ultra compact closure for the splicing of optical cables.
- Supplied with 12 single element trays each able to accommodate 12 splices providing a maximum capacity of 144 fibres, or 12 single circuit splice trays. Each single circuit splice tray has two storage sections providing a total of 24 trays per joint. Each tray can accommodate up to 4 splices providing a total capacity of 96 fibres.
- An input manifold manages the tubes to a common routing channel and has the provision to mount up to four optical splitters.
- The joint is for use with heat shrink splice protectors of 1.3mm in diameter and 30mm in length.
- The closure base has 4 circular entry ports and an oval port. Cables up to 20mm in diameter can be installed into each port. A further two small ports are available as emergency ports. These ports are for heat shrink entry and can accommodate a cable of up to 12mm in diameter.
- Circular port cables are sealed using a mechanical sealing gland. The gland can be assembled onto the cable away from the joint and is then simply plugged into the base.
- Oval port cables are sealed using adhesive lined heat shrink sleeves.
- A 4 Way Entry Gland is available to allow the installation of four small cables into one circular port. The gland can accommodate cables from 5 to 7mm in diameter.
- Splice trays hinge upwards individually, allowing full access to spliced fibres without disturbance to live fibres in adjacent trays.
- Integrated loop storage basket for mid-span applications.
- Can be supplied with a pole/wall mounting bracket.
- Can be supplied with a pressure test valve for both flash testing and cable earthing.

### Kit Contents

The CMJ is supplied with: -

- 01 x Base
- 01 x Cap
- 01 x Clamp
- 01 x O Seal
- 01 x Fibre Routing Manifold
- 02 x Tube Retainer
- 04 x Tube Retainer Cover
- 01 x Loop Storage Basket

Optional parts are supplied dependent on the part number selected. See page 3 for the part number table. The optional parts are: -

- 12 x SE or SC Trays
- 01 x Oval Port Entry Kit
- 02 x Circular Port Entry Kit
- 01 x Pressure Test Valve
- 01 x Pole / Wall Bracket

### Additional Items

- Single Entry Gland Kit
- 4 Way Entry Gland Kit
- CMJ Oval Port Entry Kit
- Silicone Grease
- Emergency Port Cable Entry
- Optical Splitters
- Splice Protectors
- Mounting Bracket / Support Tool

## Technical Data

• Minimum Fibre Bend Radius (mm):	20
• Number of Cable Ports:	4 circular and 1 oval (also contains 2 additional small emergency ports)
• Cable Diameter Range (mm):	
• Circular Port:	7 to 20
• Multi Port (in circular port):	5 to 7
• Oval Port:	7 to 21
• Emergency Port:	4 to 12
• Cable Retention (N):	
• Circular Port:	> Cable (Ø/45) x 1000N with central strength member secured.
• Multi Port (in circular port):	> 150N for cables with Aramid yarns, > 30N for cables without Aramid yarns
• Maximum number of splice trays:	12 Single Element 12 single Circuit Double Trays (each tray has two storage area so 24 trays total)
• Maximum fibre capacity of Joint:	144 Single Element 96 Single Circuit
• Splitter capacity:	2 optical splitters of 4mm x 4mm x 60mm
• Required space envelope (mm):	(l) 290 x (w) 231 x (d) 164
• Operating temperature:	-40°C to + 70°C (5 to 95% RH)
• Material:-	
• Cap:	GF Polypropylene
• Base:	GF Polypropylene
• Clamp:	GF Nylon
• Splice Trays:	FR ABS
• Testing:-	
• Closure Sealing:	IP68 (5 metres) (IEC 61300-2-23)
• Optical:	Tested 1310nm,1550nm and 1625nm
• Change of Temperature:	IEC 61300-2-22
• Dry Heat:	BS EN 60068-2-2 Test Bb
• Damp Heat:	IEC 60068-2-3: 1969
• Vibration:	IEC 61300-2-1
• Torsion:	IEC 61300-2-5
• Bending:	IEC 61300-2-37
• Impact:	IEC 61300-2-12
• Cable Retention:	IEC 61300-2-4
• Crush Resistance:	IEC 61300-2-10

## Logistics

• Packing Dimensions (mm):	(l) 480 x (w) 250 x (d) 210
• Packed Weight (Kg):	2.4
• Net Weight (Kg):	1.9

## Part Numbers

PART NUMBER	SPLICE TRAYS	PORT ENTRY KITS	TEST VALVE	POLE / WALL BRACKET
<b>XJTSC01808</b>	SE x 12	NONE	NO	NO
<b>XJTSC01809</b>	SE x 12	NONE	YES	NO
<b>XJTSC01793</b>	SE x 12	OVAL	NO	YES
<b>XJTSC01746</b>	SE x 12	OVAL	NO	NO
<b>XJTSC01795</b>	SE x 12	OVAL	YES	YES
<b>XJTSC01748</b>	SE x 12	OVAL	YES	NO
<b>XJTSC01794</b>	SE x 12	2 x CIRCULAR	NO	YES
<b>XJTSC01747</b>	SE x 12	2 x CIRCULAR	NO	NO
<b>XJTSC01796</b>	SE x 12	2 x CIRCULAR	YES	YES
<b>XJTSC01750</b>	SE x 12	2 x CIRCULAR	YES	NO
<b>XJTSC01801</b>	SE x 12	OVAL + 4 MULTI	NO	YES
<b>XJTSC01803</b>	SE x 12	OVAL + 4 MULTI	NO	NO
<b>XJTSC01749</b>	SE x 12	OVAL + 4 MULTI	YES	YES
<b>XJTSC01802</b>	SE x 12	OVAL + 4 MULTI	YES	NO
<b>XJTSC01810</b>	SC x 24	NONE	NO	NO
<b>XJTSC01811</b>	SC x 24	NONE	YES	NO
<b>XJTSC01797</b>	SC x 24 (12 DOUBLE)	OVAL	NO	YES
<b>XJTSC01751</b>	SC x 24 (12 DOUBLE)	OVAL	NO	NO
<b>XJTSC01799</b>	SC x 24 (12 DOUBLE)	OVAL	YES	YES
<b>XJTSC01753</b>	SC x 24 (12 DOUBLE)	OVAL	YES	NO
<b>XJTSC01798</b>	SC x 24 (12 DOUBLE)	2 x CIRCULAR	NO	YES
<b>XJTSC01752</b>	SC x 24 (12 DOUBLE)	2 x CIRCULAR	NO	NO
<b>XJTSC01800</b>	SC x 24 (12 DOUBLE)	2 x CIRCULAR	YES	YES
<b>XJTSC01782</b>	SC x 24 (12 DOUBLE)	2 x CIRCULAR	YES	NO
<b>XJTSC01805</b>	SC x 24 (12 DOUBLE)	OVAL + 4 MULTI	NO	YES
<b>XJTSC01807</b>	SC x 24 (12 DOUBLE)	OVAL + 4 MULTI	NO	NO
<b>XJTSC01804</b>	SC x 24 (12 DOUBLE)	OVAL + 4 MULTI	YES	YES
<b>XJTSC01806</b>	SC x 24 (12 DOUBLE)	OVAL + 4 MULTI	YES	NO

## Additional Items

### MS - Single Entry Gland Kit

The Single Entry Gland Kit is used to install a single cable into one of the four circular ports of the joint. It can accommodate cables of 7-20mm in diameter. The gland is installed onto the cable and then simply pushed into the base of joint. The kit contains all of the parts necessary to seal the cable and secure the strength members.



**Prysmian Part No. – XJTSC01754**

### MS - 4 Way Entry Gland

The 4 Way Entry Gland is used to install up to four cables into one of the four circular ports of the joint. It can accommodate four cables from 5-7mm in diameter. The gland is supplied with three blanking plugs so that a single cable can be installed on day one with additional cables entered at a later date. It also contains a device for anchoring the Aramid strength members of each cable.



**Prysmian Part No. – XJTSC01755**

### CMJ - Oval Port Entry Kit

The CMJ Oval Port Entry Kit is used to install a loop of cable into the oval port of the CMJ. The kit contains all of the components required to prepare and install the cable, and route the cable fibres to the splice trays. The cables are sealed into the oval port using a heat shrink sleeve.



**Prysmian Part No. – XJTSC01756**

### Silicone Grease

Silicone grease is used when installing a cable into one of the mechanical entry glands. The grease is smeared onto the cable sheath to ensure that any imperfections in the sheath do not affect the cable sealing. A sachet of grease is supplied with each gland. The purpose of this spare tube of grease is for use adding additional cables into the 4 Way Gland at a later date.



**Prysmian Part No. – XBFSC00260 (pack of 5)**

### Emergency Port Entry Kit

The Emergency Port Entry Kit is used to install an additional cable into one of the two small circular ports of the joint. The kit comprises of a cable heat shrink, aluminium foil and an alcohol wipe.



**Prysmian Part No. – XkTSC00401**

## Additional Items continued

### Optical Splitters

A range of optical splitters are available to install into the joint. The splitters have 2 metre input and output legs with 900 micron G657A1 fibre. For full technical information on the splitters refer to data sheet AC005.

**Prysmian Part Nos.**

- XSPSG00002 (1x4 Splitter)**
- XSPSG00003 (1x8 Splitter)**
- XSPSG00004 (1x16 Splitter)**
- XSPSG00005 (1x32 Splitter)**



### Heat Shrink Splice Protectors

Splice protectors are used to protect the fibre splice. They are 1.3mm in diameter and 30mm in length.

**Prysmian Part No. - XPESC00057 (pack of 50)**



### Pole / Wall Mounting Bracket

The Pole / Wall Mounting Bracket is a universal bracket fitted to the clamp of the joint. The bracket used to mount the closure to a pole, a wall, or the wall of a footway box and allows the joint to be stored in the horizontal or vertical position. The bracket can be supplied with the joint by selecting the correct part number when ordering but is also available as an upgrade kit as per part number below.

**Prysmian Part No. - XJTSC00136**



### Support Tool

The Support Tool allows the user to support the Joint within a portable workbench. The bracket is designed to fit most commercially available workbenches. It is dimensioned to enable a splicing machine to be placed on the workbench for close access to the splicing trays.

**Prysmian Part No. - XJTSC00075**



Please contact your local sales office listed on [www.prysmiangroup.com](http://www.prysmiangroup.com)

© Prysmian Group 2014, All Rights Reserved.

The information contained within this document must not be copied, reprinted or reproduced in any form, either wholly or in part, without the written consent of Prysmian Group. The information is believed correct at the time of issue. Prysmian Group reserves the right to amend this specification without notice. This specification is not contractually valid unless specifically authorised by Prysmian Group.