

HOLZ-HANDWERK
Nuremberg
26 - 29 March 2014



 **HOLZ-HANDWERK 2014**

Highlights

- 30 machines on an area of over 1700 sq.m.
- Modules to suit any size of workshop
- power**Touch** – the new dimension in machine operation
- easy**Touch**: Easy entry-level operation
- Total zero joint: **airTec** and **laserTec LIVE**
- Smart sawing-storage-nesting concept
- New suction traverse and storage software
- Cut Rite optimization software with an array of new features
- Modular system and retrofit capability: the saw that grows with you
- Entry-level lacquer sanding
- Interpolating FLEX5axis unit
- Smart return conveyor with vertical CNC technology
- New software functions with wood**CAD|CAM**
- Packaging designs: New online shop
- Smart automation and logistics solutions
- Optimized data flow
- Window technology for maximum flexibility and performance
- Economical, process-reliable profile wrapping

Growing with the HOMAG Group

What starts out today as a compact workshop fitting into an area of below 80 square meters can evolve into an entry-level industrial-scale solution tomorrow. Discover the amazing possibilities available for upgrading your production outfit on a modular basis, enabling a flexible response to new and changing requirements. Make your ideas reality – with individual solutions from the HOMAG Group.

woodWOP 7 goes 3D!



The software highlight of 2014: wood**WOP** 7 is on the starting blocks and promises to provide some surprising new functions. You will be amazed as you (and we) dip into a whole new dimension!

wood**WOP**
goes 3D

Everything in one App – Stay in touch with events on the road.



Highlights, videos, diary dates, current information – the EventApp helps you keep right up to date. Simply scan in the QR code!

event.homag-group.com



A warm welcome to HOMAG City

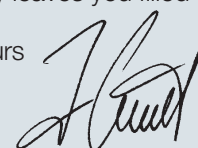


Two eventful years have flown by, and the time has come round again for the “Holz-Handwerk” and “fensterbau frontale” exhibition duo to open its doors in Nuremberg. It is our very great pleasure

to welcome you to our “HOMAG City” in Hall 10.0. We can promise you an amazing and impressive array of innovations and smart technology revolving around our “Growing with the HOMAG Group” theme. Whatever your needs are, you will find the ideal solution in store at our stand – from one-man operation through to the industrial-scale outfit, from the small edgebander through to the fully automated large-scale solution. Don’t take it from us: Convince yourself about ways to sustainably grow your business and optimize your workshop. Be inspired by the efficiency of our concepts and let the HOMAG Group help you turn your ideas into reality!

It only remains for me to wish you an exciting time at the show, and to hope that your visit to HOMAG City leaves you filled with “inspiration” for the future.

Yours



Jürgen Köppel
Member of the Board Sales, Service, Marketing

HOMAG City online
What can you expect to find at the Holz-Handwerk and fensterbau frontale? Find out at homag-group.com/holzhandwerk

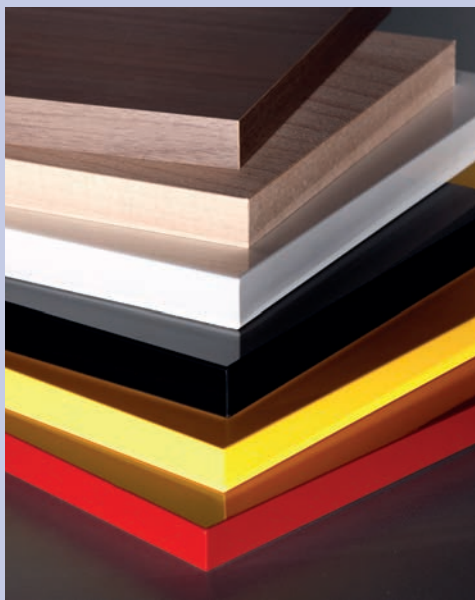


BRANDT and HOMAG

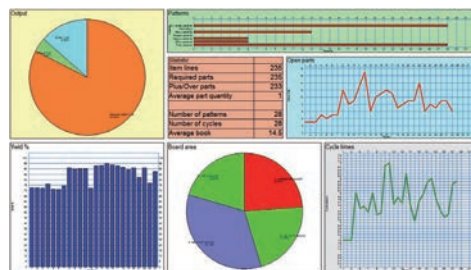
Furniture joints now yesterday's news

With the zero joint now occupying a firm place not only in the industrial sector but in woodworking shops too, BRANDT and HOMAG have launched different performance categories of their **airTec** system. This technique involves using heated compressed air to reactivate the function layer of edging material to achieve a jointless result.

BRANDT offers its **airTec** unit with a feed rate of 15 m/min, for use on all 1400 to 1800 series BRANDT machines. It works in combination with the standard gluing section to provide a dual solution. HOMAG has developed a system which achieves a feed rate of up to 20 m/min. Its benefits include energy and air consumption savings of up to 40% per workpiece compared to hot air systems available to date.



Special-edition-machine: At the fair two Ambition special editions with **airTec** of BRANDT and HOMAG will be exhibited – at an unbeatable price!



HOLZMA Cut Rite with a range of new features

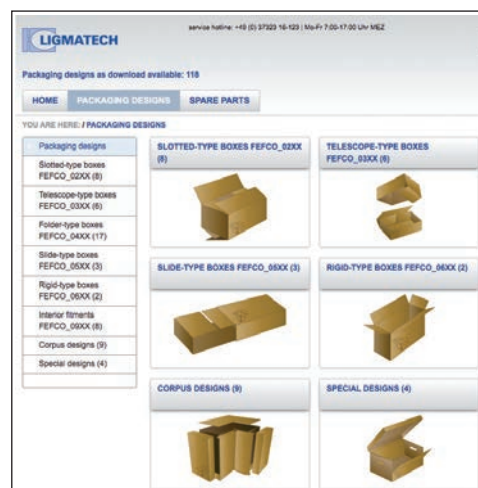
Efficient, intelligent software is the essential driving force behind an ever more networked production environment. The entry-level version of the optimization software Cut Rite LITE comes with an array of impressive new features, such as up to 99 text fields for supplementary marking and labeling information, scope for link-up to higher-level systems, and facility for importing raw panel data, for example from the BARGSTEDT storage software. Alongside Cut Rite LITE, HOLZMA has also upgraded the performance scope of all other versions of its optimization software with around a dozen new functions in total.

LIGMATECH

New online shop for packaging designs

Anyone working with the cardboard-box cutting machine VKS 200/power**Touch** will benefit from an exciting added service in our new LIGMATECH Shop. With a little help from us, compile your own varied selection of different packaging designs! Selected spare parts with easily understandable video installation instructions and new services round off the portfolio.

Visit us at
www.ligmatechshop.com!



ecoPlus

Corrugated cardboard – a low-cost natural talent

Cardboard-box cutting machine VKS 200/power**Touch** from LIGMATECH also makes an important contribution to saving the planet. Corrugated cardboard used for product packaging is a genuine natural product which helps to save resources, is easy to dispose of and economically reusable. Its facility for simple adjustment to the product and its low weight allow optimum utilization of storage and transport space.

BARGSTEDT TLF 210 **profiLine**

New suction traverse & OffCutPro

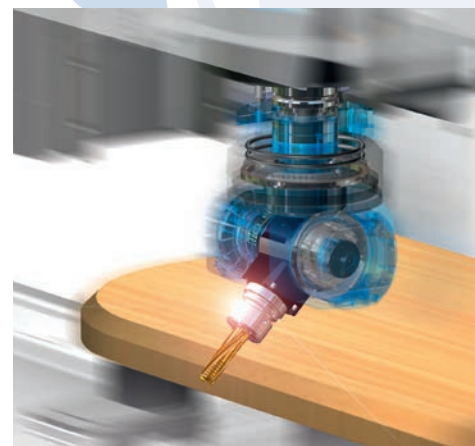
The new ST 61 suction traverse will be on show for the first time. By handling panels up to 5.60 m in length, it allows an even more diverse range of panel variants. The ST 61 allows almost unlimited transport and management of the processed panel spectrum, and a tangible improvement in terms of both productivity and efficiency. Added to this are improved drive systems at the fully automatic TLF 210. An improved dynamic response and more efficient control technology ensure faster, more precise depositing of panels.

With OffCutPro, BARGSTEDT will be showcasing its patented handling system for

automatically and manually stored panel offcuts. As part of a material management system, Off-CutPro ensures the optimum utilization of panels down to the smallest manual offcut. The benefit: Added value in the production process is verifiably increased – equating to cash in your pocket.

woodStore Analyzer EXPERT

The latest module of the woodStore storage control system teases the maximum out of any storage system with a view to further improving saw-related processes. A step-by-step presentation illustrates ways of increasing the efficiency of the overall storage-saw system.

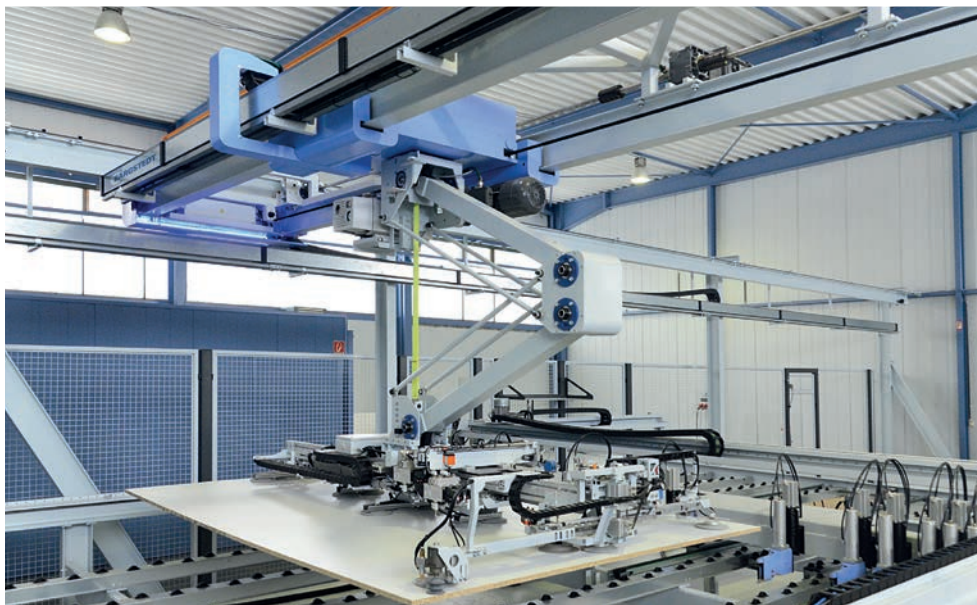


SCHULER Consulting Optimized data flow

Many processes in operation in today's producing companies have evolved in a certain way due to historic circumstances, meaning that the flow of information is often in need of optimization. SCHULER is an expert in uncovering untapped potential in this type of situation. Benefits include significant improvement of the information flow, better data quality, simplified data maintenance, reduced personnel expense and definition of necessary production and machine data (for instance production lists, cutting data, CNC data and so on).



Visit **SCHULER Consulting** in Hall 10, stand no. 213 A.



WEEKE Interpolating FLEX5axis unit

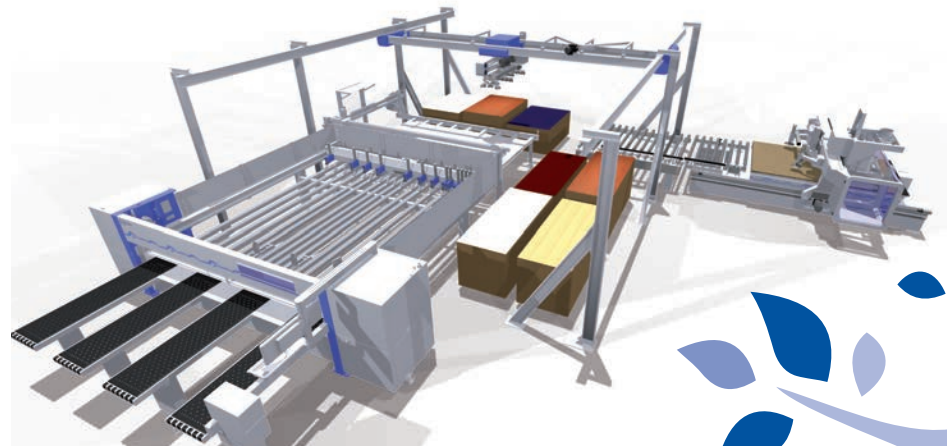
Any producer with only occasional use for a fifth axis can now enjoy all the processing benefits offered by this added axis dimension. Visitors to the Holz-Handwerk will be able to experience live at first hand the outstanding quality and scope offered by 5-axis processing using the optimized FLEX5axis unit. With this new product, WEEKE has created a way of providing 5-axis technology for occasional use to those not necessarily requiring the full axis as a permanent feature, while offering important scope for future flexibility – and all at an attractive cost-to-performance ratio.

Growing with the HOMAG Group

Today's entry-level machine can grow into the networked, compact workshop of tomorrow – opening up scope for new products, materials and designs. Give free rein to your imagination. The technology, software and services you will need to turn your dreams into reality are all available from us: From handling systems through panel dividing technology, woodworking and drilling systems to sanding technology and automation systems. Grow your business with the HOMAG Group!

Your benefits:

- Modular expansion of your workshop
- Flexible response to tomorrow's needs
- Efficient work flows and time savings
- Transparent data structures and processes
- Seamlessly integral software
- One contact to deal with all your machines



BARGSTEDT, HOLZMA, WEEKE

Sawing, storage and nesting in combination

BARGSTEDT, HOLZMA and WEEKE have put their heads together and produced a combined machine comprising storage, saw and nesting unit designed to allow an enormous variety of panel processing operations. This combination has been precisely tailored in particular to the needs of producers who

process both rectangular and free-form components – such as vehicle, boat or interior fitters. The sawing, storage and nesting machine is also ideally equipped to cope with an enormous variety of materials. The easy compatibility of their software solutions means the machines communicate on the same wavelength, guaranteeing a smooth, efficient production sequence – even where only small piece numbers or batch size one orders are being processed.

Software makes the vital difference

A decisive factor in ensuring smooth, trouble-free interaction is a perfectly seamless flow of both material and data. An elementary module here is woodCAD/CAM from HOMAG eSOLUTION. Once the user has designed the product in every detail, the software automatically generates the bills of material as well as the CNC processing data for the sawing and nesting machine, and transmits this data to the Cut Rite optimization software from HOLZMA. At the same time, Cut Rite fetches the current information relating to material stocks from the networked BARGSTEDT storage software. Based on this collated information, Cut Rite then optimizes the cutting and production plans both for the saw and the nesting machine, and starts production.

Anyone already running this machine combination can supplement it by the addition of further modules. The result: Increased flexibility and optimization of processes. Why not come and experience the efficiency and precision of these interlinked processes at first hand?



BRANDT easyTouch: Operation at the entry level

Easy operation, intuitive menu structure: for all entry level requirements in the field of edge processing, BRANDT has equipped its machines with the easyTouch operating concept. The clearly arranged 7" graphic display permits machines to be controlled by direct touch. A particular highlight: Already processed edge lengths and operating hours are logged, permitting precise accounting on an order-by-order basis. The easyTouch operating concept is available on all machines of the 1100 and 1200 Ambition and Highflex series.



powerTouch: Operating concept on every dimension

Easy, equal, ergonomic and evolutionary: The powerTouch operating concept from the HOMAG Group combines design with function to create a totally new type of control generation. The system centers on a large multitouch monitor which allows operation of the machine functions by direct touch. New on-screen helps and assistant functions significantly simplify working – while standardized operating elements and software modules ensure an uniform operating experience at any of the HOMAG Group machines.

BÜTFERING Simple lacquer sanding right from series 100

With its new lacquer sanding package, the SWT 100 offers far greater flexibility in the entry level sector. This package combines ultra-modern unit technology with a controllable air jet cleaning device for the sanding belts and infinitely adjustable cutting speed. Produced exclusively in Germany, the 100 series consequently addresses the three main sanding applications of lacquer, calibration and veneer sanding to an exemplary standard of quality "made in Germany".



WEEKE BHX 200: Smart return conveying

The new handling concept used for the vertical CNC processing center ensures efficient one-man operation without any interruption to part flow. The finished workpiece is quickly and ergonomically made accessible to the operator by a return conveyor, cutting down on unnecessary distances and saving time. The BHX 200 is fitted with two independently moveable high-speed drill drives (a total of 36 individually activated drilling spindles), a 9 kW routing motor, a grooving saw and an optional dowel unit. Two CNC controlled clamping devices take care of precise, stable position of workpieces without the use of vacuum power.

Window technology and more: Flexible and efficient

Growing with the HOMAG Group:



Up to **15** windows per shift

Venture 312: The flexible one

With up to 45 tool slots and a three-stage clamping system, the Venture 312 provides the perfect solution for maximum variety and flexibility. Windows in every shape, doors and panel components can be processed with the utmost efficiency on a single machine.



Up to **25** windows per shift

BMG 500: High performance made to measure

With its freely configurable scope for working with different tool changers, processing units such as 5-axis technology and clamping systems, the BMG 511 delivers reliable high performance even where special requirements are involved.



Up to **50** windows per shift

powerProfiler: One for all

The benchmark for automated window production capable of fully independent operation. No other solution combines performance on this scale with a processing spectrum ranging from small parts through mullion and transom elements to arched elements and doors.



WEINMANN Comprehensive operational advice

What can I do to overcome the current shortage of skilled personnel? How can I increase the degree of pre-fabrication? How do I achieve a consistently high standard of quality for my products? WEINMANN has the answers to any questions surrounding the challenges of modern timber frame construction.



Visit **WEINMANN**
in Hall 12 at Stand 704

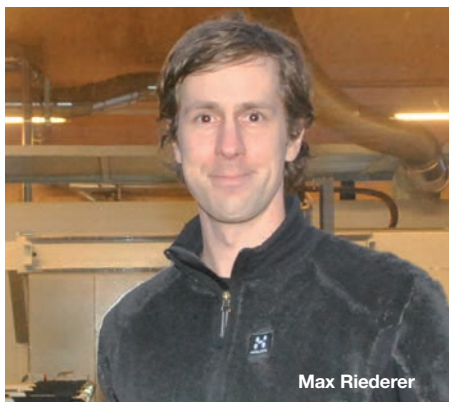
Riederer AG

New perspectives

Bigger, heavier, more individual: The demands made on window production have grown enormously over recent years. While striving to ensure compliance with ever growing technical requirements such as strict Minergie standards, window producers are faced by growing aesthetic requirements and demand for individualized window designs. Modern CNC machines from HOMAG offer manufacturers the assurance of outstanding technology coupled with flexibility.

Riederer AG is just such a manufacturer. The window producer opted to invest in the power**Profiler** BMB 900 from HOMAG, motivated partly by the growing demand from customers for larger and heavier windows coupled with ever narrower profiles. Added to this was the growing diversity of window types and shrinking batch sizes. The long resetting periods which had to be spent at the old production line finally became too restrictive. Max Riederer recalls: "We were in a position where we could only accept orders which we were able to execute economically. We also recognized that we were heading for a huge bottleneck with our angular plant."

The replacement plant is a true multitalent: The new power**Profiler** BMB 922 **profiLine**. This processing center is capable of tackling an unlimited range of different



Max Riederer

materials – whether wood, aluminum, plastic or composites. This means that Riederer AG is ideally set up to cope with the material mix of the future, benefitting from single component complete production with no need for retooling, and a premium standard of quality craftsmanship. "With the new processing center we are even confident to tackle arched windows", reports Max Riederer, adding: "Previously we would have had to refuse this type of order. But thanks to the use of clamping systems with facility for simultaneous application, the system provides great benefits in terms of both quality and costs".

Brief portrait: Riederer AG

Riederer AG is a family firm based in the canton of Graubünden in Switzerland. Already in its fourth generation of family management, its production facilities encompass a total area of 890 square meters.



HOMAG Group Original spare parts for premium quality

The HOMAG Group has succeeded in driving down the prices of over 40% of its spare parts by making the most of preferential purchasing conditions. Benefit from these reductions and use original HOMAG Group spares with warranty cover – even if alternative products appear to be a good fit. Our name stands for optimum quality and the assurance of preventing costly production outages. Our spare parts shop eParts is available 24h – the world over.
www.eparts.de



FRIZ

Optimat PUM 120/DK: Economical, process-reliable window production

Wrapping profiles made of plastic and aluminum in small batch sizes: This is the specialty of the FRIZ Optimat PUM 120/DK. Impressive aspects of this machine include primarily its significantly improved operating convenience and extremely short set-up times. Thermoplastic 2D films are used for the wrapping process with a thickness of between 0.1 and 0.2 mm. The adhesive used is PUR hot-melt glue, which is applied using a slotted nozzle. The application width is quickly, simply and steplessly adjusted by means of a slide. The machine can be simply and quickly adjusted for different profile geometries by guiding lasers, width-adjustable wrapping zones and the patented tool change system QUICKCLAMP.



fensterbau
frontale 2014



Visit **FRIZ** at the **fensterbau frontale** (Hall 3, Stand 129)



HOMAG Group AG
Homagstr. 3-5
72296 Schopfloch
Deutschland
+49 7443-13-0
info@homag.de
www.homag-group.com