



Large **filter area** Great **advantages**

KonfAir produces and delivers cartridge filters that meet most customer needs. A keen eye for development, respect for deadlines and production facility in Denmark, makes us a flexible and professional supplier and business partner at an international level.



Cartridge filters



▷ Large filter area - Great advantages

With its large filter area at a relative small space, the cartridge filters are often the best choice for filtration of large air volume polluted with industrial smoke or dust.

With a base of standard products, KonfAir is able to deliver the correct filter solution based on the industrial process and the environmental and operation costs..

With our own production and short delivery times, KonfAir is also able to supply custom solutions for the customer.

“the correct quality - for the correct filterhousinging - at the correct time”.



”

With 6 filter types and many variation possibilities, KonfAir has a wide standard program that covers most customer needs

“

Filter Types

- JET Cartridge filter KAF [Casted ALU Cap]
- JET Cartridge filter KPF [Environmental filter]
- Cartridge filter KDO [Open end caps]
- Cartridge filter KDC [Closed bottom cap]
- Cartridge filter KGF [threaded cap]
- Cartridge filter KSF [molded top and bottom]

Filter media

- 135 g 88/12 cellulose/polyester blend with nano fibers
- 140 g 80/20 cellulose/polyester blend flame retardent
- 260 g Polyester
- 260 g Polyester with alucoating
- 260 g Polyester hydrophobic treated
- 260 g Polyester PTFE Membrane
- 260 g Polyester ALU + PTFE Membrane

The cartridge filters are available in diameters from 120 - 352 mm and in lengths of up to 2000 mm

Description of product code

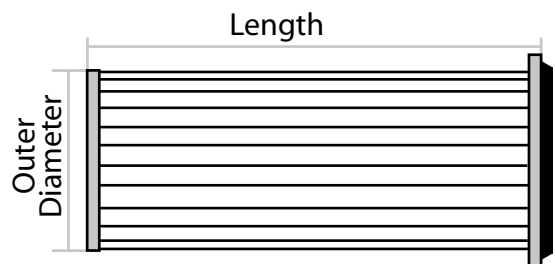


▶ Easy code for a quick overview

Cartridge filters from KonfAir are described by a code that makes it easy for both the customer and KonfAir.

The code secures that all parts agree that it is the correct cartridge filter is discussed. This means that the customer will receive the correct cartridge filter – every time.

The code and its description can be seen below:



Filter type Outer diameter of the filter Length of the filter Filter media Number of pleats
 KDC - 325 - 800 - P260 - 140

The first information in the code is the filter type. KonfAir have six available filter types that will be described on the following pages.

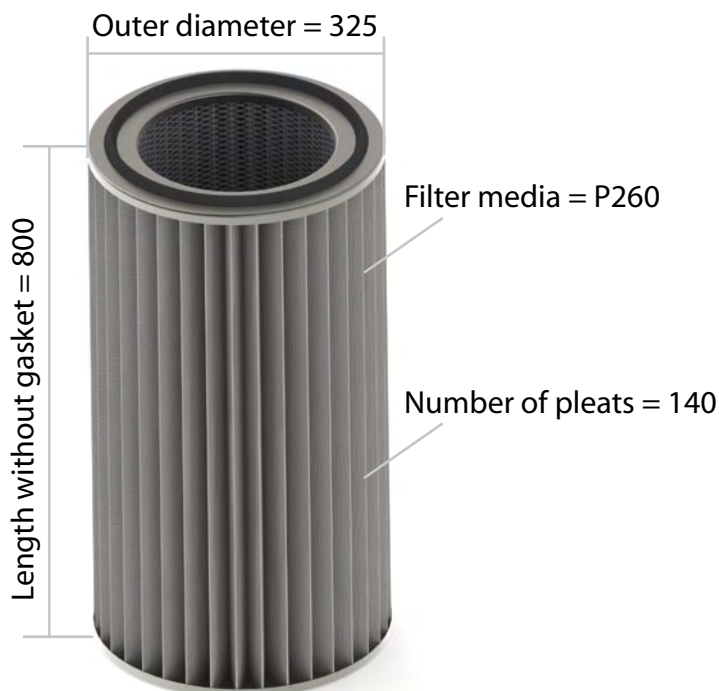
Then the code will state the outer diameter of the filter. The outer diameter is measured on the filtration media including the bands or outer wire mesh. The outer diameter is not always the same as the outer diameter of the topcap.

The third information is the length of the filter. The length is measured from the top to the bottom, without gaskets. The tolerance for the length is +/- 5 mm.

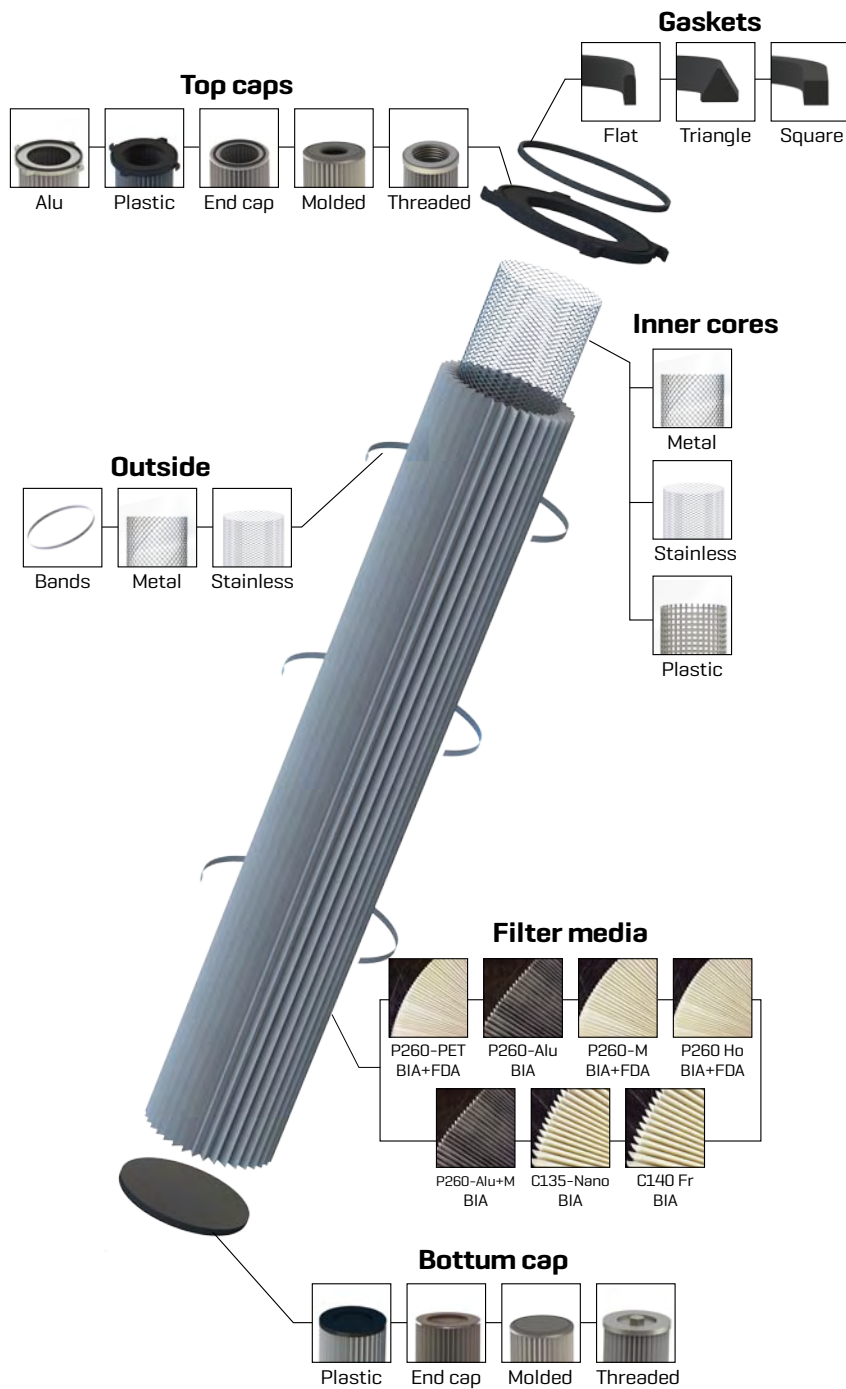
The next information is the filter media. KonfAir can supply 7 different types of media. These will be described on the following pages.

The last information is the number of pleats. This information secures that there is the correct filter area in the cartridge filter.

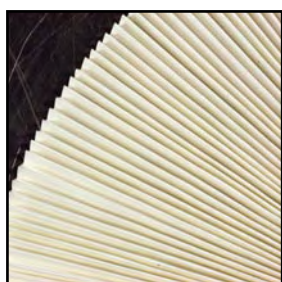
On the left is an example of a cartridge filter with the code: KDC-325-800-P260-140



Possibilities



Available filtration media

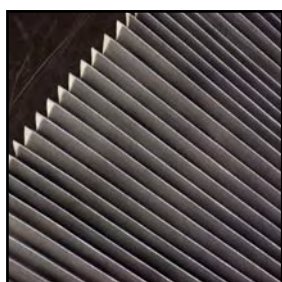


P260-PET

260 g polyester media

BIA class: M

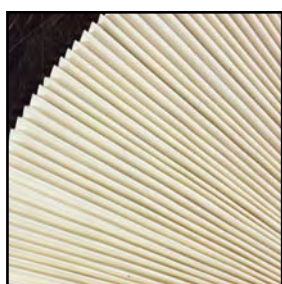
FDA certificate



P260-Alu

260 g polyester media with alucoated treatment

BIA class: M

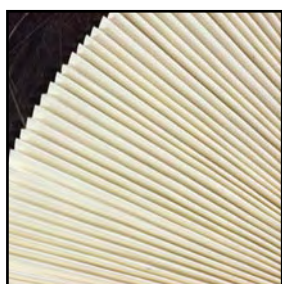


P260-Membrane

260 g polyester media with PTFE membrane

BIA class: M

FDA certificate



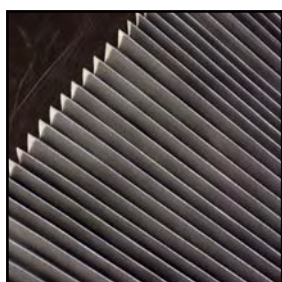
P260-Ho

260 g polyester media with hydrophobic treatment

BIA class: M

FDA certificate

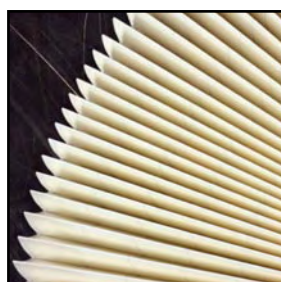
Available filtration media



P260-Alu + Membrane

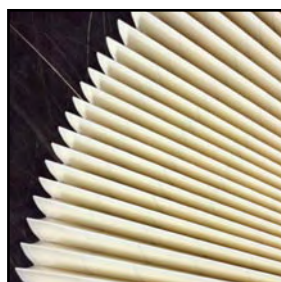
260 g Polyester media with alucoated treatment and PTFE membrane

BIA class: M



C135-Nano

135 g medie consistant of 88 % cellulose and 12 % polyester



C140-Fr

140 g medie consistant of 80 % cellulose and 20 % polyester

Cartridge filter - KAF



▷ JET Cartridge filter KAF

JET Cartridge filter with a top cap in cast aluminum. The top cap is fitted with hooks that lock the cartridge filter to the filter house when mounted. The hooks make the cartridge filter easy to mount and secure a tight seal. Since the gasket can be mounted both on the top of the top cap and on the bottom of the top cap, the cartridge filter can both be top loaded and bottom loaded in the filter house.

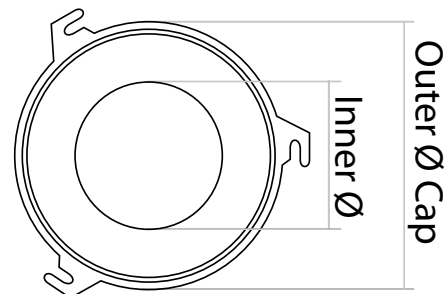
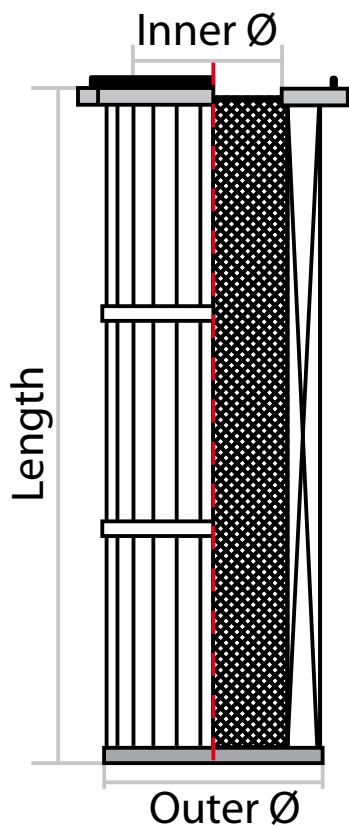
The KAF filters are available in standard sizes with an outer diameter from 156 mm up to 350 mm.

On some sizes it is possible to add venturi nozzles to the top cap. The venturi nozzles will make it easier to clean the cartridge filters during operation.



Dimensions

Outer Ø (mm)	Inner Ø (mm)	Outer Ø cap (mm)	Number of hooks	Venturi nozzels possible
156	94	188	3	No
225	150	246	3	Yes
225	150	246	4	No
325	216	340	3	Yes
325	216	371	3	Yes

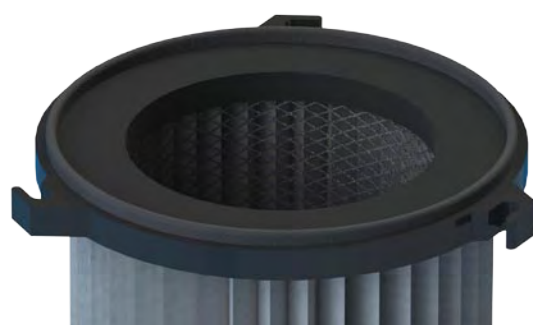


Cartridge filter - KPF

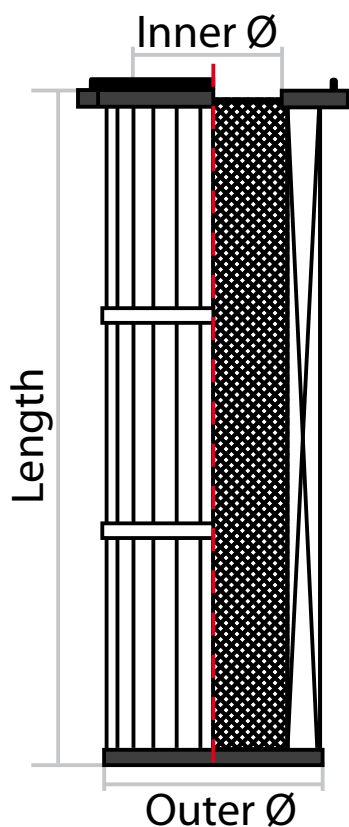


▶ JET Cartridge filter KPF

The KPF filter type is KonfAir's environmental friendly filter. The KPF cartridge filter contains no metal parts, instead the inner net and end caps are produced in plastic. Because all the parts of the KPF cartridge filter are flammable it is easy to dispose of the filter after it has been used. Unlike other types of cartridge filters that contain metal parts that need to be removed before disposing, the KPF cartridge filter can be disposed as flammable material directly after use. The ease of disposal and the fact that there are no metal parts in the filter, makes the KPF an environmental friendly filter.

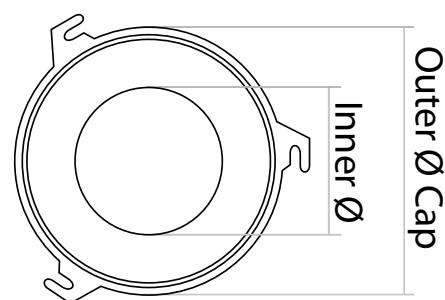


The top cap is fitted with hooks that lock the cartridge filter to the filter house when mounted. The hooks make the cartridge filter easy to mount and secure a tight seal. Since the gasket can be mounted both on the top of the top cap and on the bottom of the top cap, the cartridge filter can both be top loaded and bottom loaded in the filter house.



Dimensioner

Outer Ø (mm)	Inner Ø (mm)	Outer Ø cap (mm)	number of hooks	Venturi nozzles possible
145	85	165	3	No
225	155	245	3	No
225	155	245	3	Yes



Cartridge filter - KDO



▷ Cartridge filter KDO

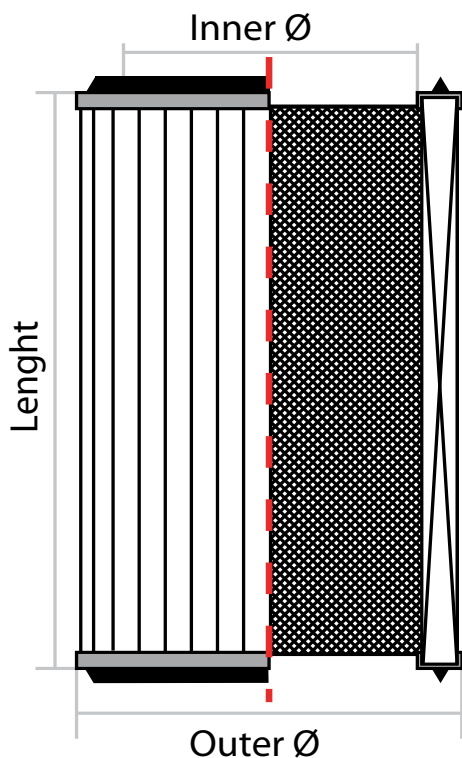
KDO cartridge filters from KonfAir are cartridge filters with round, standard metal end caps. The cartridge filters are available in different sizes that follow the industry standards. The filter is produced with an inner tube in metal wire mesh and on the outside it is possible to have either a supporting band or wire mesh.

The KDO cartridge filters have open end caps on both ends in order for it to be mounted in filter houses where this is required. Gaskets can be placed on both the top and the bottom end cap and is available in both a triangle and a square shape.



Dimensions

Outer Ø (mm)	Inner Ø (mm)
155	85
205	90
216	143
305	190
325	216
351	241



As mentioned above the cartridge filter can be fitted with an outside supporting wire mesh. If this option is chosen, the cartridge filter can have a max length of 1200 mm. If a cartridge filter of more than 1200 mm is needed it is possible to mount two KDO cartridge filters together.

Cartridge filter - KDC



▷ Cartridge filter KDC

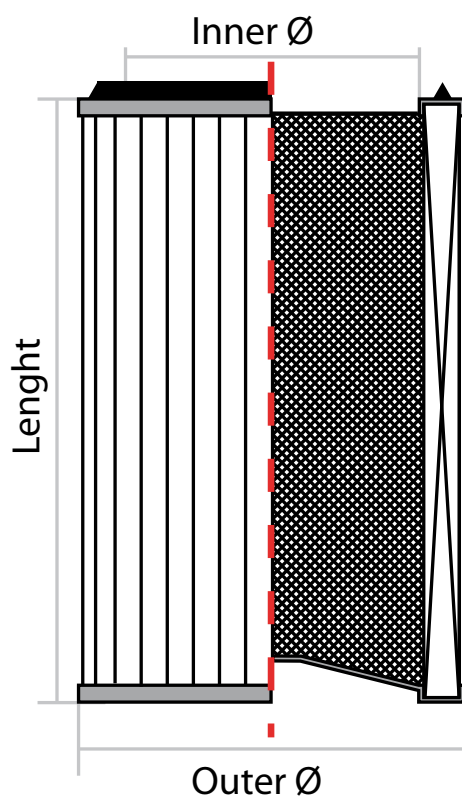
KDC cartridge filters from KonfAir are cartridge filters with round, standard metal end caps. The cartridge filters are available in different sizes that follow the industry standards. The filter is produced with an inner tube in metal wire mesh and on the outside it is possible to have either a supporting band or wire mesh.

The KDO cartridge filters have an open end cap on top and a closed end cap on the bottom in order for it to be mounted in filter houses where this is required. Gaskets can be placed on both the top and the bottom end cap and is available in both a triangle and a square shape.



Dimensions

Outer Ø (mm)	Inner Ø (mm)
155	85
205	90
216	143
305	190
325	216
351	241



As mentioned above the cartridge filter can be fitted with an outside supporting wire mesh. If this option is chosen, the cartridge filter can have a max length of 1200 mm. If a cartridge filter of more than 1200 mm is needed it is possible to mount a KDO cartridge filter on top of the KDC filter to reach the needed length.

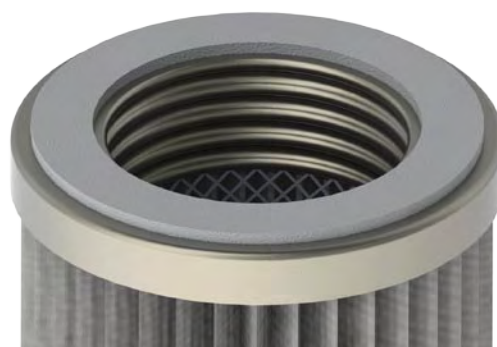
Cartridge filter - KGF



▷ Cartridge filter KGF

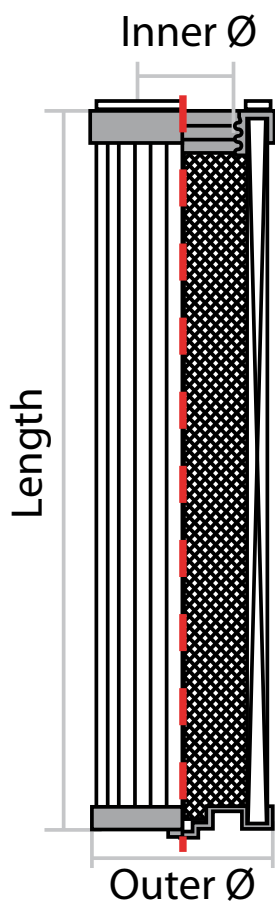
Cartridge filters from KonfAir with the KGF name are cartridge filters with a threaded end cap. The threaded end cap make the KGF cartridge filter very easy to mount in filter houses that has the corresponding threaded mounting part. The top cap is available in sizes that matches the standard threading of the industry.

To make the mounting as easy and as tight as possible the bottom cap is made with a feature with the shape of a six sided nut. This nut feature makes it possible to tighten the cartridge filter with standard tools and together with a correct sized gasket this secures a tight mount every time.



Dimensions

Outer Ø (mm)	Inner Ø (mm)
115	65
120	70

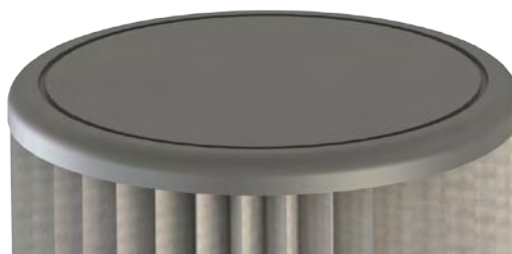


Cartridge filter - KSF



▷ Cartridge filter KSF

KSF cartridge filters from KonfAir are cartridge filters with casted ends in both the top and bottom of the cartridge filter. The ends will be casted in polyurethane (PUR). Because KonfAir are producing the cartridge filters, the ends can be made to meet the customers' requirements. If special designs are required, molds can be made that will allow the production of these designs.



Process Overview - Guidance



Process

Air to filter ratio (m³/m²/h)

Filter media

Dust

Asbestos	30-48	P260 - Alu
Calcium sulphate	48-60	P260 - Membrane
Cement	48-60	P260
Calcite	30-37	P260 / P260-Ho
Carbon	48-60	P260 - Alu
Graphite	30-36	P260 - Alu
Paper	50-60	P260 - Alu

Grinding dust

Brass	48-60	P260 - Membrane
Cast iron	60-72	P260 - Membrane
Stainless steel	48-60	P260 - Membrane
Aluminium	30-48	P260 - Alu + Membrane
Iron/Metal	48-60	P260 - Membrane
Plastic	66-78	P260 - Alu
Wood	60-72	P260 - Membrane

Shot blasting (Dust)

Stainless steel	54-66	P260
Iron/Metal	48-60	P260
Stone	66-78	P260
Ceramics	72-90	P260

Process Overview - Guidance - Continued



Process

Air to filter ratio (m³/m²/h)

Filter media

Laser-/plasma-/ flame cutting

Laser cutting	30-36	P260 - Alu + Membrane
Plasma cutting	36-48	P260 - Alu + Membrane
Flame cutting	36-48	P260 - Membrane
Plasma cutting [plexiglas]	24-30	P260 - Membrane

welding fumes/grinding dust

dry welding fumes	30-36	P260 / C140 - Fr
Greasy/oily welding fumes	36-48	P260 - Ho / C135 Nano
50 % welding + 50 % grinding [dry]	48-60	P260 / P260 - Alu
50 % Welding + 50 % Grinding [Greasy/oily]	36-48	P260 - Ho

Surface treatment

Powder coating	30-42	P260 - Alu
Sand blasting	36-48	P260 / P260 - Alu



▷ when it's urgent

KonfAir is the right supplier when things need to be done fast. We are able to deliver from day to day or from hour to hour and we have carefully selected the best transport solutions that guarantee that your goods reach you as agreed – locally as well as internationally. KonfAir tracks your order carefully from registration to delivery.

▷ focus on requirements and development

We keep an eye on your filter components throughout their life cycle and constantly focus on customer requirements and market developments in TÜV-certified laboratory facilities.

▷ documented quality

KonfAir develops and manufactures its products in accordance with the ISO 9001 standard in its own factories in Denmark and Lithuania. This means that our high-quality products are sold at very competitive prices. We are always abreast of the latest EU legislation and we know where to find any specific information you may require. KonfAir guarantees products that comply with both physical and regulatory requirements – and we can document our guarantees!

▷ responsibility

The responsibility we feel towards our customers and suppliers permeates our company culture. For example, it is not only important to us that our staff should thrive in a healthy and safe working environment. We also feel a global responsibility. This is why we have chosen to support aid organisations working for good causes.



Orebygårdvej 13, Tjørring Tel. +45 97 13 71 33 konfair@konfair.dk
DK-7400 Herning Fax. +45 97 13 71 95 www.konfair.dk