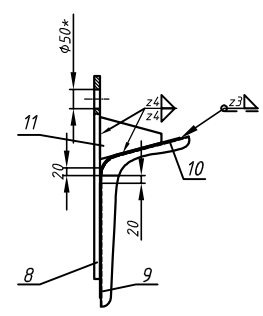
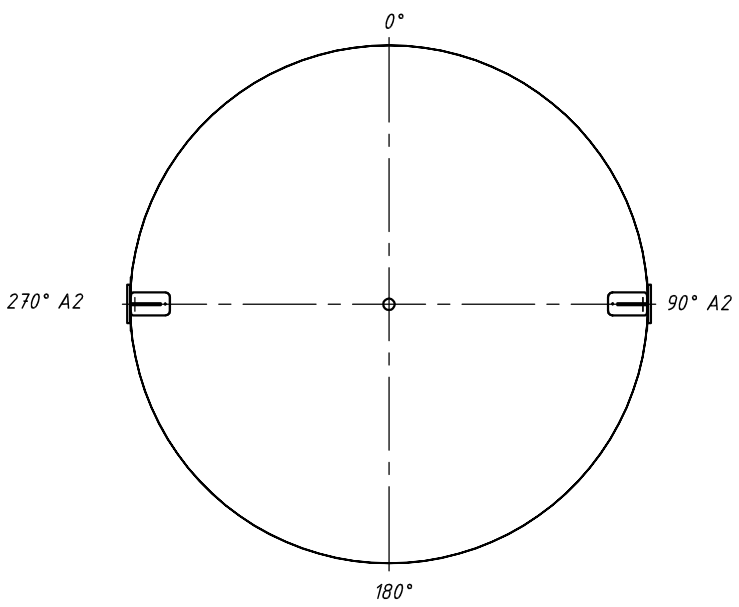
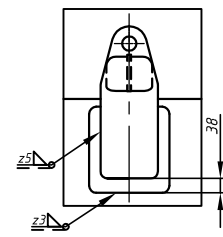


II (1:10)



A (1:10)



- 1.*For information only.
- 2. Non mentioned tolerances - holes H16, shafts h16, other ±IT16/2.
- 3. Not mentioned surface roughness Ra 12,5 µm.
- 4. Mark (punched in) tanks serial numbers (acc. to customer) acc. the vessel's dokumentation

Welds		Nondestructive examination				Remarks			
Welding data	Longitudinal welds	0,7				VT 100%			
	Circumferential welds	0,7							
	Other welds	0,7							
Quality level for vessel weldings seams defects - C acc. LST EN ISO 5817 : 2014 requirements									
Nozzle data	Nr. / No	Description	Q-ty	Positioning	Flange SMS/DN	PN	Type ASME / DIN	Facing	Remarks
	A2	Lifting lugs	4	90°;270°	—	—	—	—	—
	M1	Manhole	1	0°	—	—	—	—	—
Material data	Description		Tank						
	Shell and top head		1.4404 EN 10088-2						
	Bottom head and outer room supports		1.4404 EN 10088-2						
	Nozzle pipes		—						
	Nozzles		—						
	Seals		—						
	External bolts & nuts		—						
	Internals		—						
Reinforcement plates		—							
VTM-35.3.00.000SB									
Vertical tank									
						1:20			
						Rev.0			
						20.06.26			
						acmm.dk			