

HPS INTERNATIONAL

Creator of Hydraulic Power

IRONJAW® WITH ADDITIONAL PLATES



25/05/2023

HPS International 2023 – all right reserved – Follow us @hpsinternational on LinkedIn

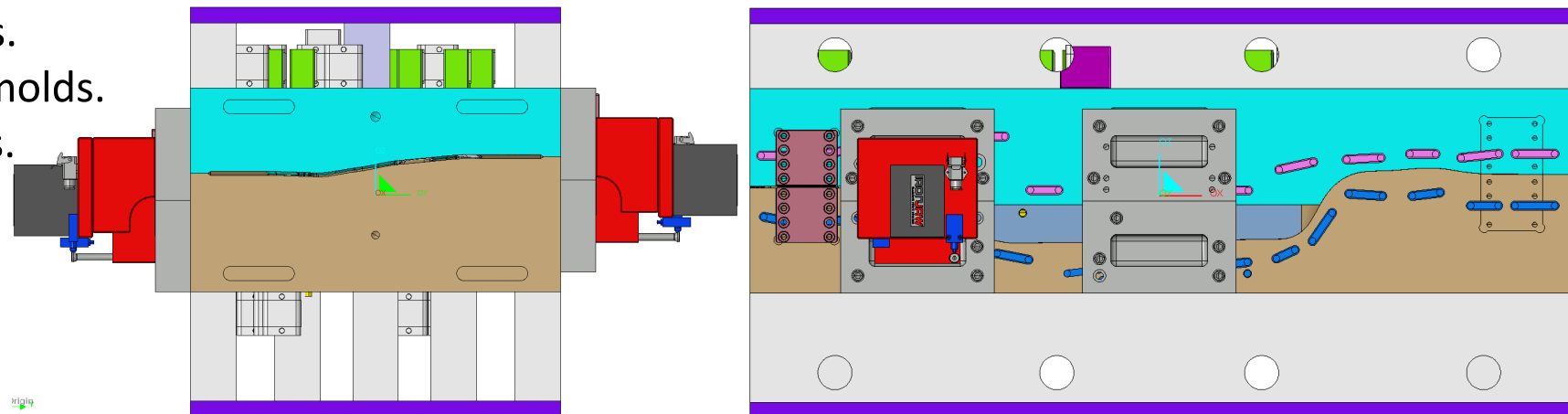
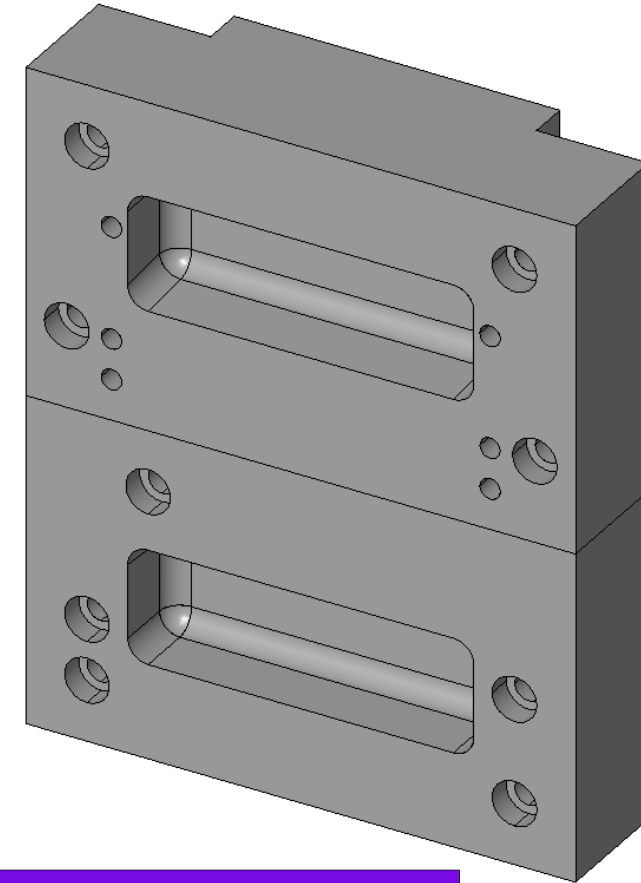
IRONJAW® WITH ADDITIONAL PLATES

- **IRONJAW® INSTALLED IN ADDITIONAL PLATES (NOT ON MOLD SURFACE)**

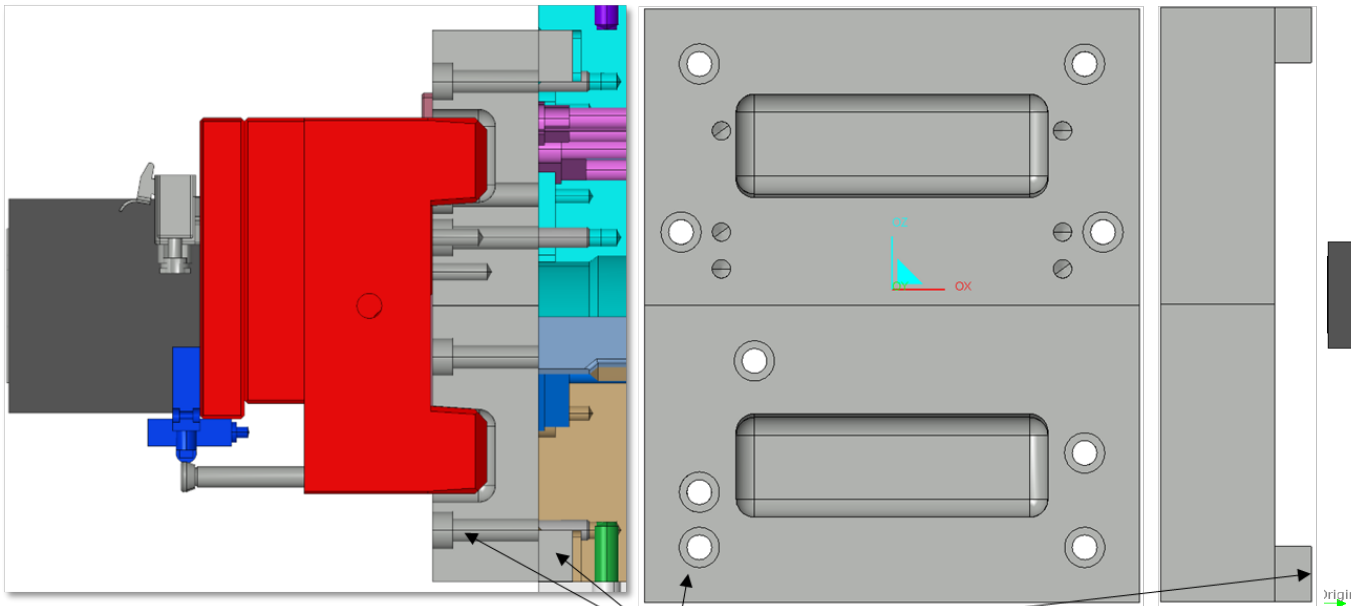
- IRONJAW® is not installed on the but in additional steel plates that are screwed and pinned to the mold
- Less invase and avoids mold geometrical constrains.
- Additional steel plates fixed to the surface of the molds.
- Fixation of the steel plates to the mold:
 - No slots machined on mold but more of screws and dowel pins.
 - Additional steel plate inserts to enter on mold grooves.
 - Fixation screws and dowel pins.

- **IRONJAW® applications**

- To be applied in all types of molds.
- Aluminium molds.
- Plastic injection molds.
- Die casting molds.

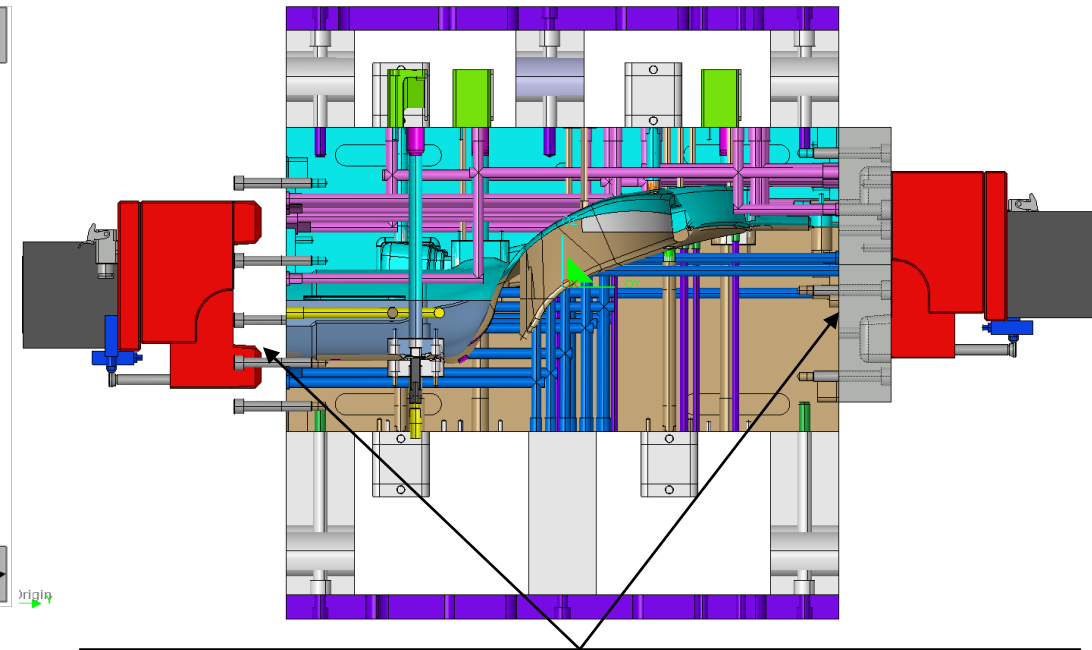


IRONJAW® WITH ADDITIONAL PLATES



Fixation of the steel plates to the mold:

- No slots machined on mold but more of screws and dowel pins.
- Additional steel plate inserts to enter on mold grooves.
- Fixation screws and dowel pins.



- IRONJAW® is not installed on the mold but in additional steel plates that are screwed and pinned to the mold.
- Less invase and avoids mold geometrical constrains.
- Additional steel plates fixed to the surface of the molds.

Very important:

Additional plates are not supplied by IRONJAW®.

To ensure the best IRONJAW® performance, the machining of the additional plates must be perfectly matching the mold in order to achieve a perfect alignment between the parting lines of the additional plates with parting lines of the mold.

CREATOR OF HYDRAULIC POWER

HPS International

 @hpsinternational

62, Chemin de la Chapelle Saint-Antoine ZAC
95300 ENNERY - PARIS - FRANCE

(+33) 1 34 35 38 38

(+33) 1 30 75 08 08

www.hpsinternational.com

