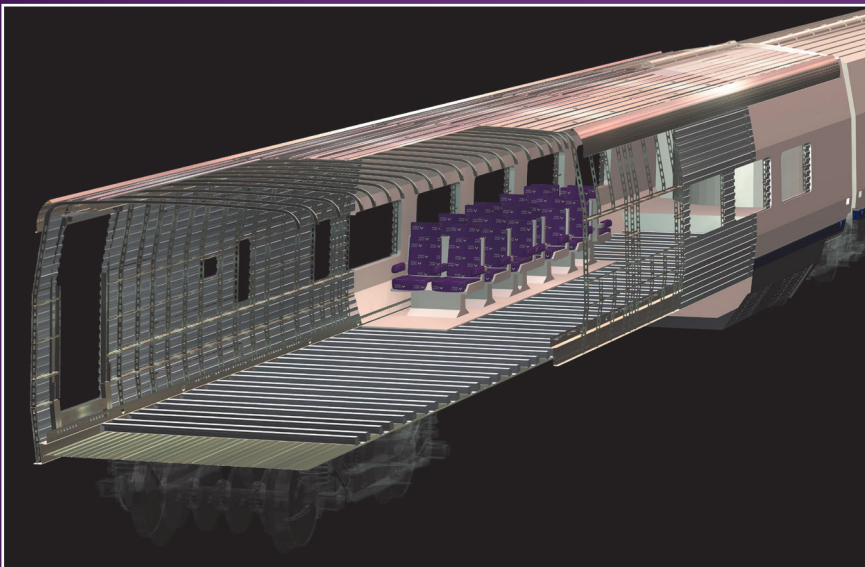


On the Right Track with Welsers Profiles

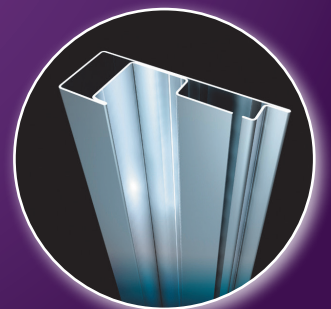
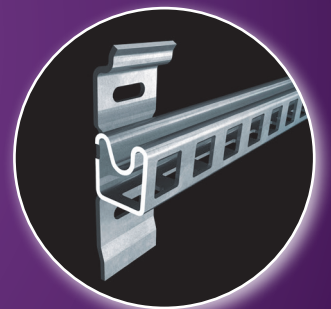
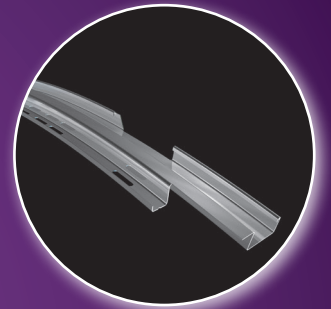
Bespoke, roll formed, long length metal sections

Extremely long, heavy gauge, complex sections are fundamental elements of the roll formed steel profiles found in the rail industry. With Welsers you are guaranteed exact dimensions, as well as very tightly controlled straightness and twist tolerances. Rail travel is simply better with Welsers profiles.



Whether it's a passenger train, tram or metro; in the side or end walls, ceiling or floor – Welsers profiles are your ideal travelling companions. Even in goods transport, our metal sections guarantee a safer arrival.

Light weight, high strength,
low cost, long length, tight tolerances



Welser Profiles

In the long run and over long lengths, whether straight or curved, open or welded closed, punched or unpunched – Welser profiles always deliver what they promise.

Our Background:

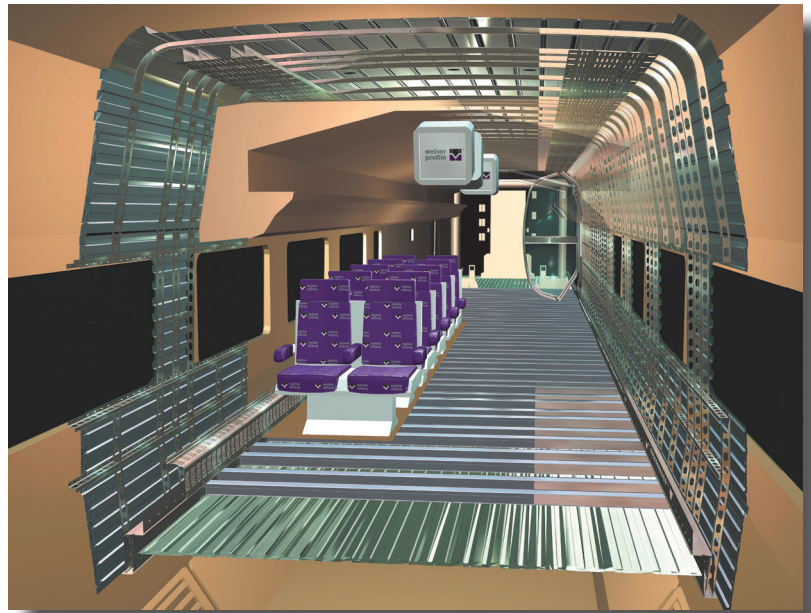
- Over **three decades of experience** in the rail industry
- More than **60 roll forming lines**
- A one-stop shop for all things roll formed

Why Welser?

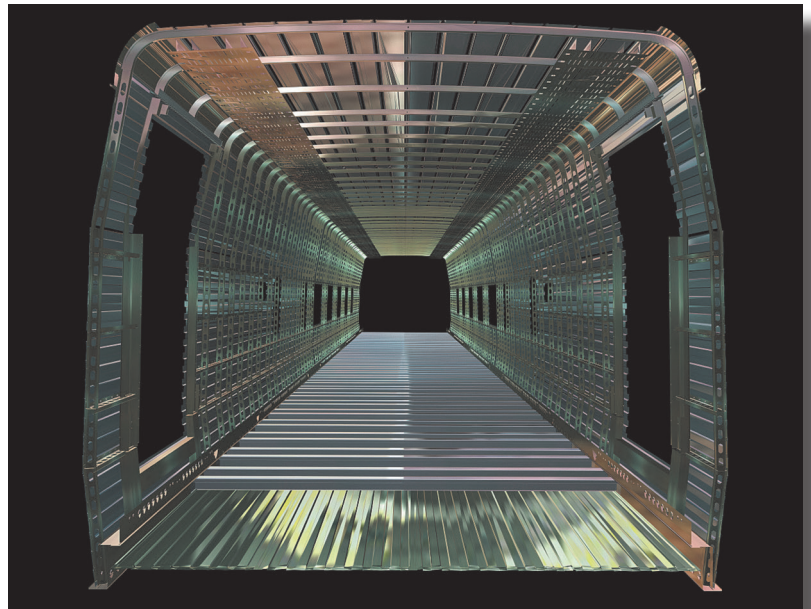
- Up to **27 metres long, complex and even 3D bent sections**
- **Consistent, exact dimensions**, even for heavier gauge steel profiles up to 8mm thick
- **Complete profile systems** can be made to suit customers' requirements
- **Improved functionality** through our enhanced downstream processing capabilities

Your Service Extras – as Standard:

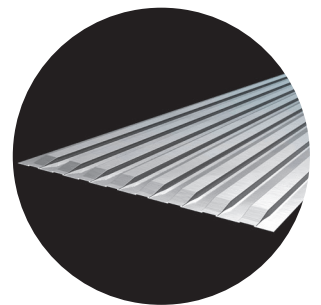
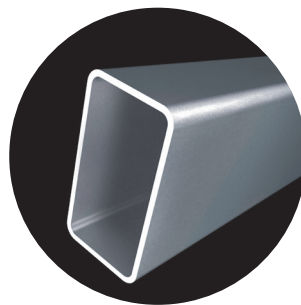
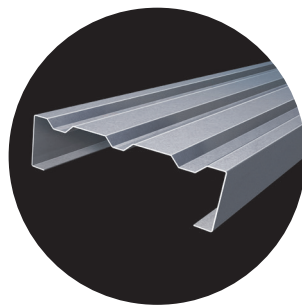
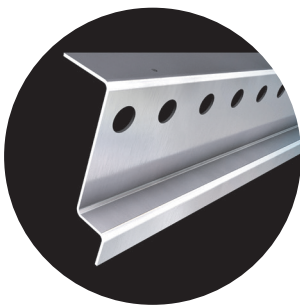
- Sophisticated logistic solutions, including bespoke packaging
- Security of supply through replicated manufacturing sites
- Support for your global projects



Overhead or underfoot, our profiles can be found everywhere.



With help from our in-house toolmakers, Welser is able to reliably manufacture even heavy gauge steel profiles to exacting tolerances.



- Manufacturer of bespoke profiles and tubes made from steel, stainless steel and non-ferrous metals
- Family organisation currently in its 11th generation
- More than 20,500 different profiles produced to date

- Total manufacturing area more than 500,000 m²
- More than 1,800 employees
- 3 production sites / 60 roll forming lines
- 13 sales offices