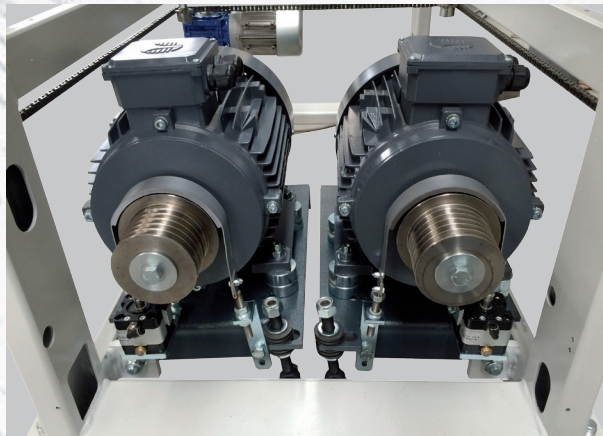
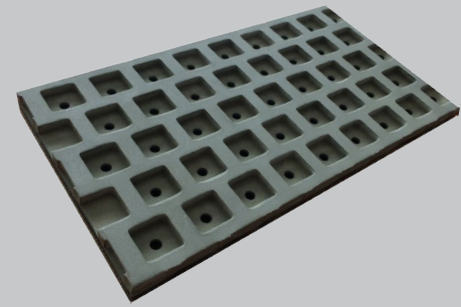


Tappeto SUPERGRIP  
Special feed belt SUPERGRIP  
Tapis spécial SUPERGRIP



Motori indipendenti  
Independent motors  
Moteurs indépendants

Rulliere di estensione  
Rollers table extension  
Rouleaux de prolongement table



Soffiatore compatto  
Compact belts blower  
Soufflette compacte

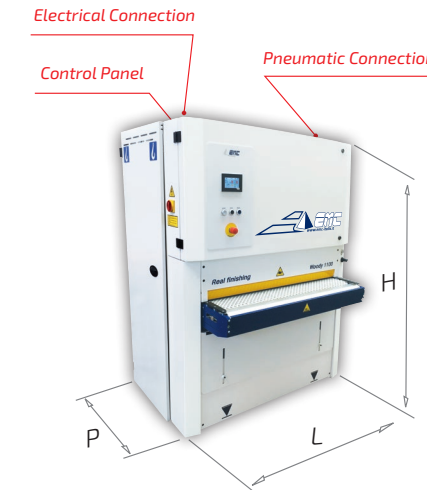


Gruppi pulizia, satinatura e strutturazione  
Cleaning, satining and structuring groups  
Groupes de nettoyage, satinage et structuration



MACCHINA BASE  
BASIC MACHINE  
MACHINE DE BASE

- ✓ Versione a 1/2 nastri abrasivi  
Version 1/2 abrasive belts  
Version 1/2 bandes abrasives
- ✓ Larghezza utile di lavoro 1100mm  
Working width 1100mm  
Largeur utile de travail 1100mm
- ✓ Spessore di lavoro min/max 3-170mm  
Working thickness min/max 3-170mm  
Epaisseur de travail min/max 3-170mm
- ✓ Dimensione nastri abrasivi (sviluppo) 1900mm  
Size abrasive belts (development) 1900mm  
Dimension des bandes abrasives (développement) 1900mm
- ✓ Tampono pneumatico flessibile  
Flexible pneumatic Pad  
Patin pneumatique flexible
- ✓ Inverter avanzamento  
Feed belt inverter  
Convertisseur vitesse d'entraînement



## Woody 1100

MACHINE DIMENSIONS  
(LxPxH) mm

.2 Abrasive Belts - 1450x1225x1920



### Need Help?

No problem. Just connect the electronic cable we gave you to the machine. EMC technician will do the rest of the job.

"Sanding is an Art, which comes from the Heart".  
And we have a big Heart.



Via Brodolini, 23 - 40026 Imola (Bo) Italy  
Tel. +39 0542 688034 - Fax +39 0542 643959  
E-mail: info@emc-italia.it



www.emc-italia.it



EMC si riserva il diritto di modificare le specifiche tecniche - EMC se réserve le droit de modifier les spécifications techniques - Printed by Nuova Grafica Imola



## Woody 1100

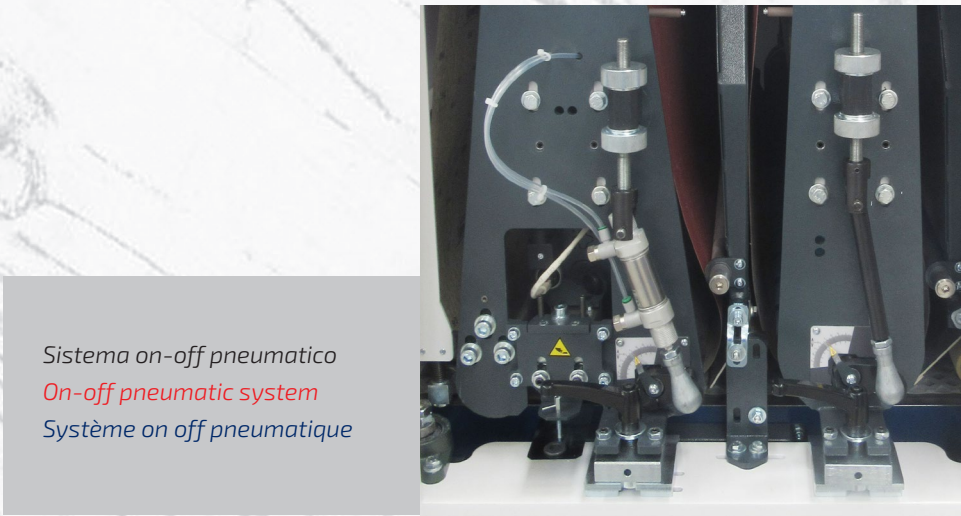
A concentration of Technology at the best price



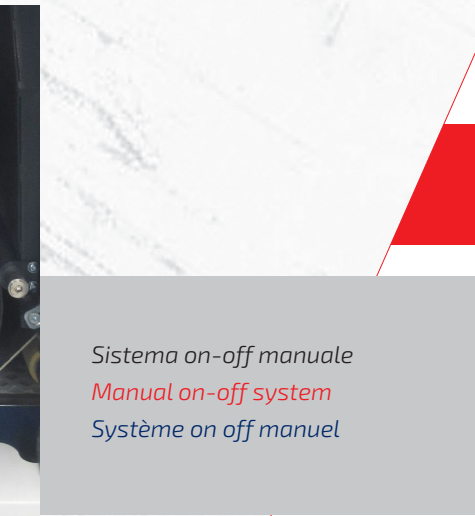


# Woody 1100

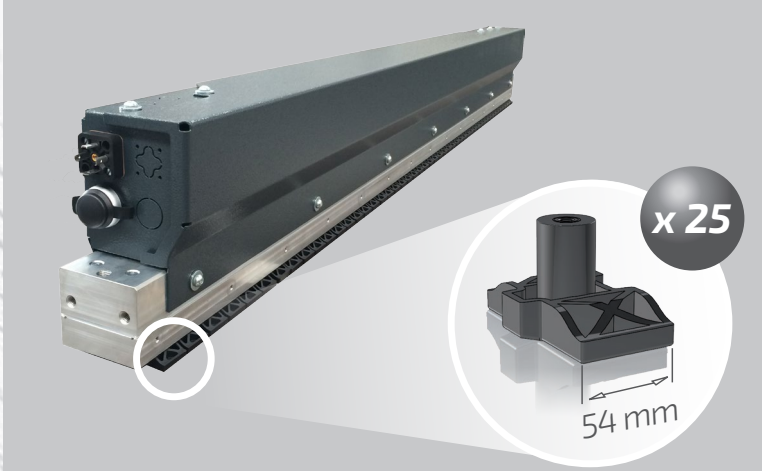
Easy Line



Sistema on-off pneumatico  
On-off pneumatic system  
Système on off pneumatique

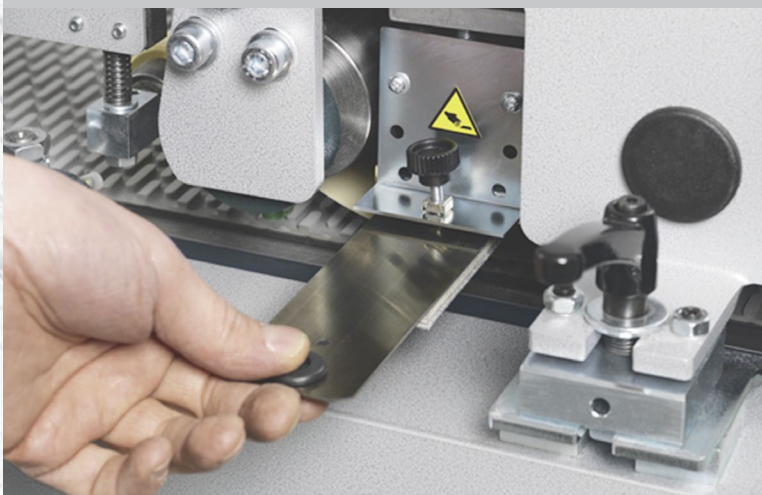


Sistema on-off manuale  
Manual on-off system  
Système on off manuel



Tampone elettronico sezionato di nuova concezione  
Electronic sectioned pad of new conception  
Patin électronique sectionné de nouvelle conception

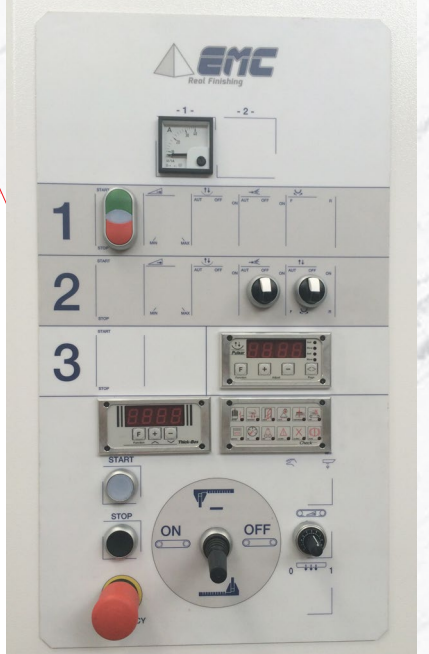
Pattino flessibile a lamina estraibili ed intercambiabili  
Flexible pad removable and interchangeable plates  
Patin flexible équipé de lames extractibles et interchangeables



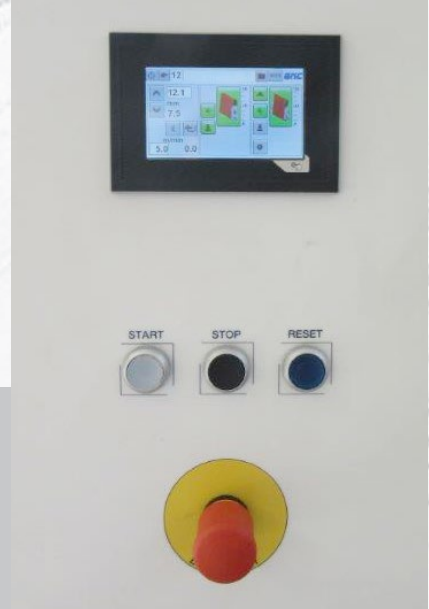
Configurazione 2RK  
Configuration 2RK  
Configuration 2RK



Compact and performance in 1100 mm



Pannello di controllo Digitale  
Digital Control Panel  
Panneau de control digitale



Pannello di controllo Analogico  
Analogic Control Panel  
Panneau de control analogique



Quadro elettrico  
Electrical box  
Tableau électrique



Posizionatore automatico  
Automatic positioner  
Palpeur automatique



Controllo pneumatico del tampone elettronico  
Pneumatic control for electronic pad  
Control pneumatique du patin électronique

Depressore interno (taratura variabile tramite inverter)  
Internal vacuum fan (setting variable, inverter)  
Ventilateur dépression à l'intérieur (réglage variable, inverter)

