

avero

The workstation system

bott



Work efficiently.





Content:

Welcome	4 – 5
The assistance system	6 – 7
Flexibility and change	8 – 9
Material flow	10 – 11
Ergonomics	12 – 13
The bottBox	14 – 15
Organisation systems	16 – 17
ESD protection zones	18 – 19
Planning service	20 – 21
Information for your product selection	22 – 23
Single workstations	24 – 27
Base frames with height adjustment	28 – 31
Worktops	32 – 33
Accessories on table set-up	34 – 51
bottBoxes	52 – 55
Swivel arms	56 – 59
Accessories for system and swivel frame	60 – 63
Accessories for table base	64 – 67
Kits for suspended cabinets	68
Accessories	69 – 79
Multi-workstations	80 – 83
Handling lines	84 – 85
FIFO shelf	86 – 87
System packing tables	88 – 89
Mobile systems	90 – 97
LEAN-Point	98 – 99



Welcome to manual assembly

Are you looking for an innovative solution for manual assembly with simultaneous picking? With the avero workstation system we provide the ideal conditions to ensure efficiency, ergonomics and safety at your workstations.



For your industrial company to have continuous success in light of modern, worldwide economic realities, it needs to remain adaptable. It is only then that you can react quickly enough to new demands on a product. The avero workstation system's modular construction is versatile and flexible. Individual components can be readily and permanently adapted and expanded.

Thanks to the integrative modular system, you can create single and multi-workstations, assembly or handling lines and parts trolleys from only a few different components. Thanks to avero's special connection technology, you can combine steel serial parts with modules made of aluminium profiles. You can accommodate equipment of all kinds on the perforated walls and ergonomically adjustable material shelves at the required station in a clear and handy way.

Together with partner companies we offer you customised solutions for manual assembly, including connection to existing manufacturing systems and IT infrastructure.

avero



Process optimisation

Make your work processes in manual production efficient!
Together with our cooperation partner Armbruster Engineering we can offer you optimum preconditions for consistently high product quality.

Together with our cooperation partner Armbruster Engineering we have been working closely to plan and implement complete solutions for manual assembly workstations with respective material supplies and IT equipment for years now. Together we have extensive experience in the respective specialist areas. So you can concentrate on your core competences in your work. The adaptability of the avero workstation system to future challenges through modular extensions guarantees high investment safety.



Pick-to-light



Assistance system



avero



Modularity

Modern manual production is only future-proof if you can adapt it to the continually changing individual requirements. With the modular avero workstation system, you can react to new challenges quickly and with safe processes.

avero | Flexibility and change

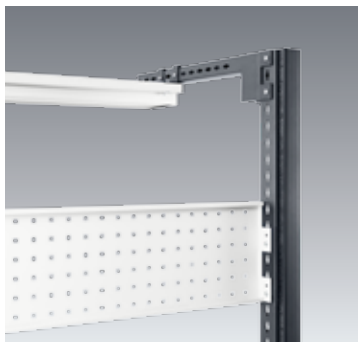
With the practical avero modular system you can put together single or multi-workstations as well as assembly and handling lines to match your individual requirements. Parts trolleys and FIFO shelves secure continuous feeding and guarantee fast material supplies.

The shelves at the avero workstation system can be adjusted as required without tools. This supports your employees' ergonomic posture. Swivel frames position tools and materials generously in the outer reach areas on the left and right of employees.



Assembly on 4 sides

Concealed cabling



avero connection technology



FIFO shelf - for box return



avero



Seamless transitions

To prevent you losing time for the transfer of material and workpieces, our avero system offers you numerous options for supplying and connecting workstations. Examples include supply trolleys, stationary or mobile material supply shelves, roller conveyors, handling lines or even the integration of a driverless transport system by our cooperation partner Armbruster Engineering.

In addition, you can connect the avero workstation systems via handling lines. The workpiece carrier moves from station to station via wheels, rollers or balls. This way, our avero system guarantees your efficient material flow.



Motion on all levels



avero



Ergonomics

Your employees' health is an important resource. To help you keep them working healthily as long as possible, avero supports a favourable posture at the workstation. Infinitely variable shelves, swivel frames and height-adjustable tables make it easy to adapt working conditions to employee height.

The modern LED lighting at the workstation is easy on the eye and helps your employees concentrate better. The electric cables are housed securely and tidily in cable ducts. You can exit cables in the right place via brush strips. In addition, we are happy to integrate socket strips for you, for the proper and secure connection of your IT equipment.



Adjusting for tilt and distance



Visual aids and lighting



Alternate sitting and standing



avero



The bottBox

With the bottBox we are offering you a unique innovation. The bottBox stores small parts tidily and allows practical access to them. We have developed this product for use in industry, in the workshop and in service vehicles as well. We have the sturdy plastic bottBox manufactured in Germany and even received the iF Design Award and the Red Dot Award for its successful design and versatile properties.



reddot award 2015
winner industrial design

The attachment integrated in the back of the bottBox housing makes it easy to suspend in perforated panels or specially designed support rails. With dividers and a transparent hinged lid, the bottBox is the ideal material box for versatile applications.

There are ergonomically shaped handles on the front and back of the bottBox. So you always hold everything safely in your hands. You can remove the viewing window in the bottBox and reposition it towards the back. This way, the pane meters out the small parts to be removed. The material can easily be taken out of the front area of the bottBox: the bottBox as a service tray.

You can replace the coloured clip for labelling the front of the bottBox. This makes systematic arrangement on the shelf easier for you and ensures clarity. You can also label the bottBox on the back using stock and Kanban cards if you wish: the bottBox as a shelf box.



As shelf boxes



As stock boxes



Discreet colour guide system



avero



perfo

You can arrange tools clearly using the perfo perforated panel system. Everything is stored tidily so that it is quickly to hand. We supply a comprehensive range with perfo hooks, shelves and tool holders.

perfo from bott guarantees efficiency and order at the workstation. The systematic provision of tools and small parts guarantees fast access to these. perfo offers a standardised system with numerous different perfo hooks and tool holders. There's something for everyone here.

The powder coated surfaces of the perfo perforated panels provide sturdy and long-term protection even under heavy loads. The perfo hooks are zinc-plated and extremely sturdy.

The concealed cable holders on the avero workstation system bundle and fix the electric cables in place. This way they ensure order, safety and flexibility. Thanks to the brush strips, the cables can exit the channel at any point.



Safe and flexible cable guiding



Simple fixing of hooks and holders



Flexible drawer dividers



avero



ESD protection zones

On request, we offer the avero workstation system in a complete ESD version. For the processing of microelectronic components, workstations with completely conductive surfaces are essential in many areas of manual assembly these days. They provide protection against uncontrolled electrostatic discharge and thus against invisible damage inside the components.





Electrostatically protected areas and ESD workstations are necessary almost throughout electronics manufacturing and semiconductor processing. We deliver the complete solution for your entire material flow chain from a single source: from advice and definition of individual requirements through delivery of adequate ESD equipment and preparation of acceptance and test protocols as well as audit reports.

We manufacture our ESD products in accordance with the IEC 61340-5-1 standard and have them tested accordingly.

Our ESD equipment is much more than just the ESD workstation: from storage cupboards for incoming goods areas through heavy duty trolleys or handling lines between workstations to parts trolleys or material supply shelves. This way, we can guarantee you ESD protection all the way.

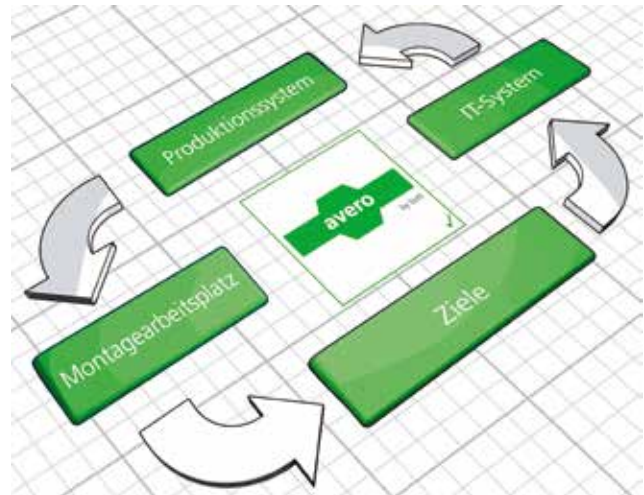


Today and tomorrow, avero guarantees ESD protection all the way.

- Advice ■
- Planning ■
- Training ■
- Products ■
- Acceptance / testing ■
- Auditing ■



avero



Your advantages

- Integrative modular principle with standard system dimensions and matched components
- Versatile material provision and workpiece transport solutions
- Ergonomic and flexible workstation design
- Concealed cabling
- Height-adjustable tables and flexible gripping spaces
- Simple and clear material supplies with the aid of bottBoxes
- With conductive surfaces for ESD protection zones on request
- Simple tool provision thanks to comprehensive perfo accessories

- ANALYSIS
- DESIGN
- PLANNING



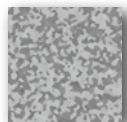
- PRODUCTION
- INSTALLATION



- SUPPORT

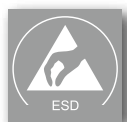
With our 3D planning service, we visualise your project from the initial idea through to the finished solution.

avero | Colour scheme for workstation systems



Environmentally friendly,
durable fine powder
coating of steel parts

Avero workstation systems are available in a modern colour combination of light grey and anthracite grey. The neutral design will match any production environment.



ESD versions of
workstation systems
available

avero workstation systems are also available as an optional ESD version with conductive surfaces. Your bott representative will be more than happy to discuss ESD protection zones and ESD workstations with you.



Delivered
pre-assembled



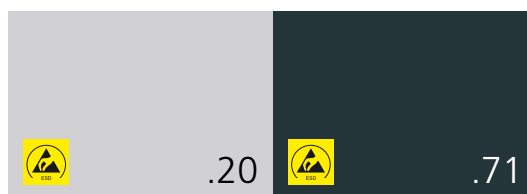
Colour combination:



light grey
RAL colour: 7035

anthracite grey
RAL colour: 7016

Colour combination ESD:



ESD light grey
RAL colour: 7035

ESD anthracite grey
RAL colour: 7016

The colour panels shown may not match the original colours for printing-related reasons.

Table frame with height adjustment via electric motor



- Mechanical, infinitely variable height adjustment with electric motor
- Memory function for 3 work heights
- Frame height (without worktop) 613 to 913 mm or 713 to 1113 mm
- Load capacity 200 kg

Table frame with height adjustment via hand crank



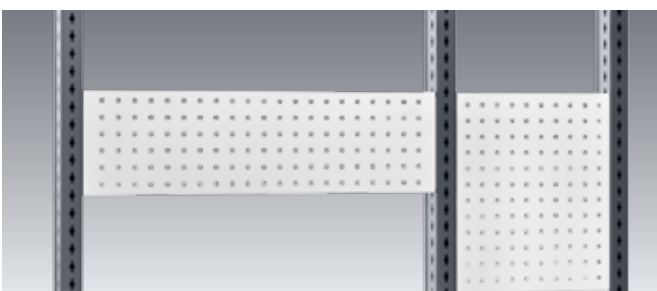
- Hydraulic, infinitely variable height adjustment with hand crank
- Frame height (without worktop)
613 to 913 mm or 713 to 1113 mm
for table depth 750 and 900 mm
613 to 913 mm or 713 to 1013 mm
for table depth 600 mm
- Load capacity 200 kg

Table frame with incremental height adjustment



- Height-adjustable legs allow table height to be adjusted in increments
- Frame height (without worktop) 613 to 913 mm or 713 to 1113 mm
- adjustable in increments of 25 mm
- Load capacity 200 kg

avero system widths



- avero system dimensions make the modular combination of components and assemblies possible
- System widths of table set-ups and accessories:
450, 900, 1350, 1800 mm
- Additional system width 675 mm with system and swivel frames as well as with supply and parts trolleys

Complete module 1



- 3x vertical profile
- 3x cable duct with brush strips for vertical profile
- 2x overhead arm for vertical profile
- Suspended drawer cabinet W 375 x D 500 x H 300 mm with 2x 100 mm drawers and lock
- Overhead rail with carriage
- 39 W strip light with 5 m connecting cable and Schuko plug
- Support rail with movable 3x Schuko socket strip, ON/OFF switch and 3 m connection cable with Schuko plug
- 2x perfo perforated panel, 480 mm high, for system width 450 mm
- perfo perforated panel, 240 mm high, for system width 450 mm
- Shelf, 350 mm deep, for system width 450 mm, kitted with 3 bottBoxes size M3
- 2x shelf, 200 mm deep, for system width 450 mm, kitted with 3 bottBoxes size M2
- Swivel frame, system width 675 mm
- perfo perforated panel for swivel frame
- Shelf, 350 mm deep, for swivel frame, kitted with 4 bottBoxes size M3
- Support rail for swivel frame, kitted with 5 bottBoxes size M1
- Laminate coated worktop
- Table load 200 kg

Version	Suitable for	Dimensions W x D x H mm	Dimensions worktop W x D x H mm	Work height table top from - to mm	Order ref.
Height adjustment in increments	DE	1500 x 870 x 2035-2435	1500 x 750 x 30	743 - 1143	41032014.16
Height adjustment with hand crank	DE	1500 x 870 x 2035-2435	1500 x 750 x 30	743 - 1143	41032008.16
Height adjustment with electric motor	DE	1500 x 870 x 2035-2435	1500 x 750 x 30	743 - 1143	41032004.16

Complete module 2



- 2x vertical profile
- 2x cable duct with brush strips for vertical profile
- 2x overhead arm for vertical profile
- Suspended drawer cabinet W 375 x D 500 x H 500 mm with 2x 200 mm drawers and lock
- Overhead rail with carriage
- 54 W strip light with 5 m connecting cable and Schuko plug
- Support rail with movable 3x Schuko socket strip, ON/OFF switch and 3 m connection cable with Schuko plug
- perfo perforated panel for system width 1350 mm, system height 240 mm
- Shelf, 200 mm deep, kitted with 10 bottBoxes size M2
- Shelf, 350 mm deep, kitted with 10 bottBoxes size M3
- Swivel arm with system frame
- perfo perforated panel for system frame
- Shelf, 200 mm deep, for system frame, kitted with 4 bottBoxes size M2
- Laminate coated worktop
- Table load 200 kg

Version	Suitable for	Dimensions W x D x H mm	Dimensions worktop W x D x H mm	Work height table top from - to mm	Order ref.
Height adjustment in increments	DE	1500 x 870 x 2035-2435	1500 x 750 x 30	743 - 1143	41032011.16
Height adjustment with hand crank	DE	1500 x 870 x 2035-2435	1500 x 750 x 30	743 - 1143	41032005.16
Height adjustment with electric motor	DE	1500 x 870 x 2035-2435	1500 x 750 x 30	743 - 1143	41032001.16

Complete module 3



- 2x vertical profile
- 2x cable duct with brush strips for vertical profile
- 2x overhead arm for vertical profile
- Suspended drawer cabinet W 225 x D 500 x H 500 mm with a 400 mm drawer and lock
- Overhead rail with carriage
- 39 W strip light with 5 m connecting cable and Schuko plug
- Support rail with movable 3x Schuko socket strip, ON/OFF switch and 3 m connection cable with Schuko plug
- perfo perforated panel for system width 900 mm, system height 240 mm
- Shelf, 200 mm deep, kitted with 6 bottBoxes size M2
- Shelf, 350 mm deep, kitted with 6 bottBoxes size M3
- Support rail kitted with 6 bottBoxes size M1
- Swivel frame, system width 675 mm
- perfo perforated panel for swivel frame
- Shelf, 350 mm deep, for swivel frame, kitted with 4 bottBoxes size M3
- Support rail for swivel frame, kitted with 5 bottBoxes size M1
- Laminate coated worktop
- Table load 200 kg

Version	Suitable for	Dimensions W x D x H mm	Dimensions worktop W x D x H mm	Work height table top from - to mm	Order ref.
Height adjustment in increments	DE	1500 x 870 x 2035-2435	1500 x 750 x 30	743 - 1143	41032013.16
Height adjustment with hand crank	DE	1500 x 870 x 2035-2435	1500 x 750 x 30	743 - 1143	41032007.16
Height adjustment with electric motor	DE	1500 x 870 x 2035-2435	1500 x 750 x 30	743 - 1143	41032003.16

Complete module 4



- 3x vertical profile
- 3x cable duct with brush strips for vertical profile
- 2x overhead arm for vertical profile
- Suspended drawer cabinet W 225 x D 500 x H 500 mm with 2 x 200 mm drawers and lock
- Overhead rail with carriage
- 54 W strip light with 5 m connecting cable and Schuko plug
- Support rail with movable socket strip, 3x Schuko, ON/OFF switch and 3 m connection cable with Schuko plug
- perfo perforated panel for system width 900 mm, system height 240 mm
- 2x shelf, 200 mm deep, kitted with 6 bottBoxes size M2
- 2x perfo perforated panel for system width 450 mm, system height 480 mm
- Laminate coated worktop
- Table load 200 kg

Version	Suitable for	Dimensions W x D x H mm	Dimensions worktop W x D x H mm	Work height table top from - to mm	Order ref.
Height adjustment in increments	DE	1500 x 870 x 2035-2435	1500 x 750 x 30	743 - 1143	41032012.16
Height adjustment with hand crank	DE	1500 x 870 x 2035-2435	1500 x 750 x 30	743 - 1143	41032006.16
Height adjustment with electric motor	DE	1500 x 870 x 2035-2435	1500 x 750 x 30	743 - 1143	41032002.16

Base frame with electric height adjustment (without worktop)



- Sturdy steel-aluminium frame
- Attachment option on the back for vertical profiles in 225 mm pitch
- Base frames with infinitely variable height adjustment from 643 to 943 mm are particularly suitable for use with a castor set
- 4 height adjustable feet for evening out floor unevenness, height adjustable foot Ø 30 mm, adjustable range height adjustable foot 10 mm
- Lowest stringer also makes the attachment of a hooked footrest or computer holder possible
- ESD version with conductive powder coating, conductive height adjustable feet, EBP with 3 snap fastener connections 10 mm and central earthing point
- Load capacity: 200 kg with load distributed evenly
- Colour: light grey (RAL 7035) powder coating/conductive powder coating (RAL 7035)
- Base frame with system width 675 mm not suitable as a seated workplace

Info Please refer to page 32 onwards for suitable worktops

System width mm	Suitable for	For worktops W x D mm	Height adjustment range for 30 mm worktop in mm	Order ref.	Order ref. ESD
675	DE	750 x 600	643 - 943	41007111.16	41007111.20
675	DE	750 x 750	643 - 943	41007113.16	41007113.20
675	DE	750 x 600	743-1143	41007112.16	41007112.20
675	DE	750 x 750	743-1143	41007114.16	41007114.20
900	DE	1000/1200 x 600	743-1143	41007031.16	41007031.20
900	DE	1000/1200 x 750/900	743-1143	41007034.16	41007034.20
900	DE	1000/1200 x 600	643 - 943	41007087.16	41007087.20
900	DE	1000/1200 x 750/900	643 - 943	41007090.16	41007090.20
1350	DE	1500 x 600	743-1143	41007032.16	41007032.20
1350	DE	1500 x 750/900	743-1143	41007035.16	41007035.20
1350	DE	1500 x 600	643 - 943	41007088.16	41007088.20
1350	DE	1500 x 750/900	643 - 943	41007091.16	41007091.20
1800	DE	2000 x 600	743-1143	41007033.16	41007033.20
1800	DE	2000 x 750/900	743-1143	41007036.16	41007036.20
1800	DE	2000 x 600	643 - 943	41007089.16	41007089.20
1800	DE	2000 x 750/900	643 - 943	41007092.16	41007092.20

Base frame with height adjustment via hand crank (without worktop)



- Sturdy steel-aluminium frame
- Attachment option on the back for vertical profiles in 225 mm pitch
- Base frames with infinitely variable height adjustment from 643 to 943 mm are particularly suitable for use with a castor set
- 4 height adjustable feet for evening out floor unevenness, height adjustable foot Ø 30 mm, adjustable range height adjustable foot 10 mm
- Lowest stringer also makes the attachment of a hooked foot-rest or computer holder possible
- ESD version with conductive powder coating, conductive height adjustable feet, EBP with 3 snap fastener connections 10 mm and central earthing point
- Load capacity: 200 kg with load distributed evenly
- Colour: light grey (RAL 7035) powder coating/conductive powder coating (RAL 7035)

Info Please refer to page 32 onwards for suitable worktops

System width mm	For worktops W x D mm	Height adjustment range for 30 mm worktop in mm	Order ref.	Order ref. ESD
675	750 x 600	643 - 943	41007119.16	41007119.20
675	750 x 750	643 - 943	41007121.16	41007121.20
675	750 x 600	743-1043	41007120.16	41007120.20
675	750 x 750	743-1143	41007122.16	41007122.20
900	1000/1200 x 600	743-1043	41007057.16	41007057.20
900	1000/1200 x 750/900	743-1143	41007060.16	41007060.20
900	1000/1200 x 600	643 - 943	41007105.16	41007105.20
900	1000/1200 x 750/900	643 - 943	41007108.16	41007108.20
1350	1500 x 600	743-1043	41007058.16	41007058.20
1350	1500 x 750/900	743-1143	41007061.16	41007061.20
1350	1500 x 600	643 - 943	41007106.16	41007106.20
1350	1500 x 750/900	643 - 943	41007109.16	41007109.20
1800	2000 x 600	743-1043	41007059.16	41007059.20
1800	2000 x 750/900	743-1143	41007062.16	41007062.20
1800	2000 x 600	643 - 943	41007107.16	41007107.20
1800	2000 x 750/900	643 - 943	41007110.16	41007110.20

Base frame with manual height adjustment (without worktop)



- Sturdy steel-aluminium frame
- Attachment option on the back for vertical profiles in 225 mm pitch
- Manual height adjustment from 743 to 1143 mm, in increments of 25 mm, for use of a worktop 30 mm thick
- 4 height adjustable feet for evening out floor unevenness, height adjustable foot Ø 30 mm, adjustable range height adjustable foot 10 mm
- Lowest stringer also makes the attachment of a hooked foot-rest or computer holder possible
- ESD version with conductive powder coating, conductive height adjustable feet, EBP with 3 snap fastener connections 10 mm and central earthing point
- Load capacity: 200 kg with load distributed evenly
- Colour: light grey (RAL 7035) powder coating/ conductive powder coating (RAL 7035)

Info Please refer to page 32 onwards for suitable worktops

System width mm	For worktops W x D mm	Height adjustment range for 30 mm worktop in mm	Order ref.	Order ref. ESD
675	750 x 600	643 - 943	41007115.16	41007115.20
675	750 x 750	643 - 943	41007117.16	41007117.20
675	750 x 600	743-1143	41007116.16	41007116.20
675	750 x 750	743-1143	41007118.16	41007118.20
900	1000/1200 x 600	743-1143	41007037.16	41007037.20
900	1000/1200 x 750/900	743-1143	41007040.16	41007040.20
900	1000/1200 x 600	643 - 943	41007099.16	41007099.20
900	1000/1200 x 750/900	643 - 943	41007102.16	41007102.20
1350	1500 x 600	743-1143	41007038.16	41007038.20
1350	1500 x 750/900	743-1143	41007041.16	41007041.20
1350	1500 x 600	643 - 943	41007100.16	41007100.20
1350	1500 x 750/900	643 - 943	41007103.16	41007103.20
1800	2000 x 600	743-1143	41007039.16	41007039.20
1800	2000 x 750/900	743-1143	41007042.16	41007042.20
1800	2000 x 600	643 - 943	41007101.16	41007101.20
1800	2000 x 750/900	643 - 943	41007104.16	41007104.20
Pre-assembly base frame			30001041	

Castor set for base frame



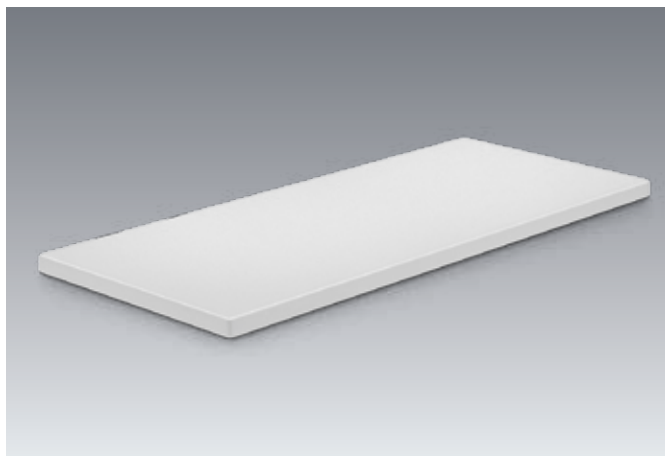
- Upgrade set to turn avero base frames into a mobile single workstation
- 4 swivel castors diameter 100 mm with brake
- Stringer made of conductive powder-coated sheet steel for assembly on the base profiles of the base frames
- Raises working area by 125 mm
- Load capacity 200 kg
- Colour: anthracite grey (RAL 7016)
- ESD version with conductive swivel castors

Info

Not suitable as heavy duty trolley!
Can only be moved on even hall floor!

Suitable for base frame with system width mm	Dimensions Ø x H mm	Order ref.	Order ref. ESD
675	100 x 125	41430131.19	41430131.71
900	100 x 125	41430079.19	41430079.71
1350	100 x 125	41430080.19	41430080.71
1800	100 x 125	41430081.19	41430081.71

Melamine-coated worktop

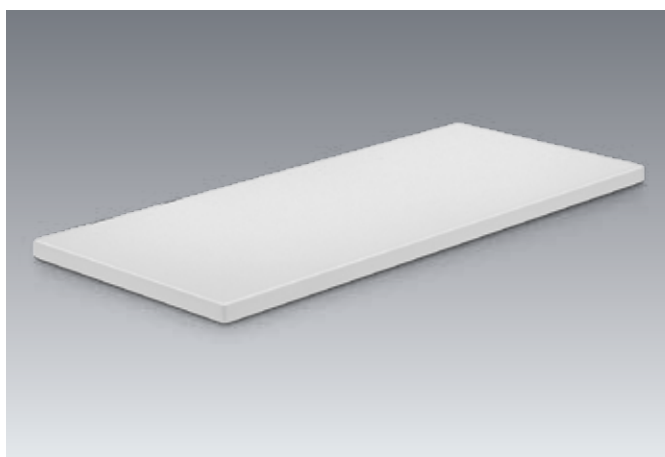


- Thickness: 30 mm
- Base material: chipboard in accordance with EN309/EN312
- Top side: melamine-coated in accordance with EN14322/EN14323
- Underside: melamine-coated in accordance with EN14322/EN14323
- Edges: 3 mm ABS edging anti-static, rounded radius R3
- incl. Rampa fittings
- Coating characteristics: normal abrasion resistance, moderate scratch and impact resistance, insensitive to staining by Group 1 and 2 substances in accordance with DIN 53799 (e.g. acetone, alcohol, white spirit, nail polish remover, organic solvents)
- Fire protection class: D-s2, d0
- Colour: light grey

ESD version

- Base material: volume conductive ESD chipboard in accordance with EN309/EN312
- Top side: conductive melamine-coated in accordance with EN14322/EN14323
- Underside: conductive melamine-coated in accordance with EN14322/EN14323
- Leakage values: in accordance with IEC61340

Laminate coated worktop



- Thickness: 30 mm
- Base material: chipboard in accordance with EN309/EN312
- Top side: HP laminate 0.8 mm in accordance with EN438
- Underside: HP laminate
- Edges: 3 mm ABS edging anti-static, rounded radius R3
- incl. Rampa fittings
- Coating characteristics: high abrasion resistance, high impact resistance, high scratch resistance, insensitive to boiling water, resistant to common chemicals, solvents, weak acids and alkalis
- Fire protection class: D-s2, d0
- Colour: light grey

ESD version

- Base material: volume conductive ESD chipboard in accordance with EN309/EN312
- Top side: conductive HP laminate 0.8 mm in accordance with EN438
- Underside: HP laminate
- Leakage values: in accordance with IEC61340

Beech multiplex worktop

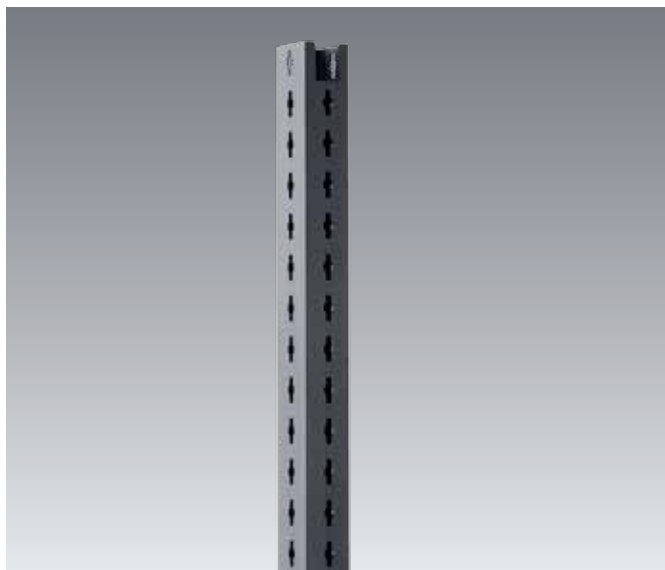


- Thickness: 30 mm
- Quality: II / III in accordance with DIN 68705 Part 2
- Top side: oiled
- Underside: oiled
- incl. Rampa fittings
- Colour: beech natural
- Bonding: laminated bi-directionally bonded beech veneers, adhesives can withstand increased air humidity and occasional contact with water

Worktop for base frames

Dimensions W x D x H mm	Melamine-coated Order ref.	Melamine-coated Order ref. ESD	Laminate coated Order ref.	Laminate coated Order ref. ESD	Beech multiplex Order ref.
750 x 600 x 30	41201142.01	41201142.04	41201142.02	41201142.05	41201142.08
750 x 750 x 30	41201143.01	41201143.04	41201143.02	41201143.05	41201143.08
1000 x 600 x 30	41201082.01	41201082.04	41201082.02	41201082.05	41201082.08
1000 x 750 x 30	41201083.01	41201083.04	41201083.02	41201083.05	41201083.08
1200 x 600 x 30	41201084.01	41201084.04	41201084.02	41201084.05	41201084.08
1200 x 750 x 30	41201085.01	41201085.04	41201085.02	41201085.05	41201085.08
1200 x 900 x 30	41201086.01	41201086.04	41201086.02	41201086.05	41201086.08
1500 x 600 x 30	41201087.01	41201087.04	41201087.02	41201087.05	41201087.08
1500 x 750 x 30	41201088.01	41201088.04	41201088.02	41201088.05	41201088.08
1500 x 900 x 30	41201089.01	41201089.04	41201089.02	41201089.05	41201089.08
2000 x 600 x 30	41201090.01	41201090.04	41201090.02	41201090.05	41201090.08
2000 x 750 x 30	41201091.01	41201091.04	41201091.02	41201091.05	41201091.08
2000 x 900 x 30	41201092.01	41201092.04	41201092.02	41201092.05	41201092.08

Vertical profile



- Sturdy conductive powder-coated steel tube with avero perforation on all 4 sides
- For attaching avero accessories at a 40 mm height increment
- Fitted on the back of the avero base frame at a 225 mm width increment
- Colour: anthracite grey (RAL 7016)



Dimensions W x D x H mm	Order ref.
50 x 60 x 1836	41012007.71

Cable duct

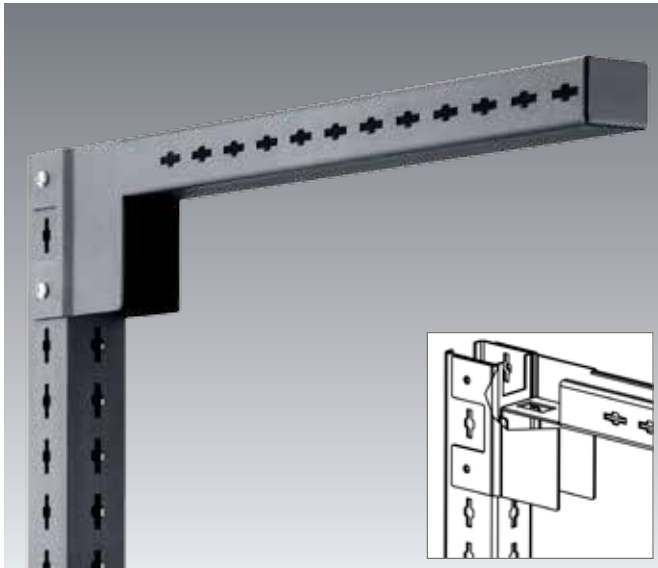


- Cable holder set for installation on the vertical profile
- Cables or hoses are bundled and fixed in place using cable holders
- Cable duct with vertical brush strips on both sides for concealed cable guiding
- Cable duct is inserted onto the cable holders
- Cable exit at any point thanks to brush strips
- Maximum cable/hose diameter 25 mm for cable exit at the brush strips
- Colour: black

Use	Dimensions W x D x H mm	Order ref.
For transport systems	48 x 35 x 1037	43504001.10
For single workstations	48 x 35 x 1837	43504002.10
For multi-workstations	48 x 35 x 2157	43504003.10
For mounting frames	48 x 35 x 1357	43504004.10

avero | Accessories on table set-up

Overhead arm



- Installed at the top of the vertical profile
- With avero perforation on the side surfaces
- Cut-out at the transition to the vertical profile for concealed cable guiding
- For attaching avero accessories at a 40 mm depth increment
- Made of conductive powder-coated sheet steel
- Colour: anthracite grey (RAL 7016)

Info

The bott logo is attached to the outermost overhead arm during final assembly

Dimensions
W x D x H mm

57 x 645 x 117

Order ref.

41011010.71

Overhead rail with carriage



- For fastening to the avero overhead arms
- Variable depth adjustment for installation at increments of 40 mm
- Incl. 1 carriage with snap hook
- Stopper element for carriage at both ends
- Carriage load capacity 10 kg
- Overhead rail load capacity 30 kg
- Overhead rail made of conductive powder-coated sheet steel
- Colour: light grey (RAL 7035)
- ESD version with carriage with metal wheels

Suitable for base frame width
mm

675

900

1350

1800

Carriage with snap hook

Pair of stoppers

Dimensions
D x H mm

30 x 27

30 x 27

30 x 27

30 x 27

22 x 98

30 x 25

Order ref.

41011179.16

41011026.16

41011027.16

41011028.16

80911002

80802005

Order ref.
ESD

41011179.20

41011026.20

41011027.20

41011028.20

80911007

avero | Accessories on table set-up

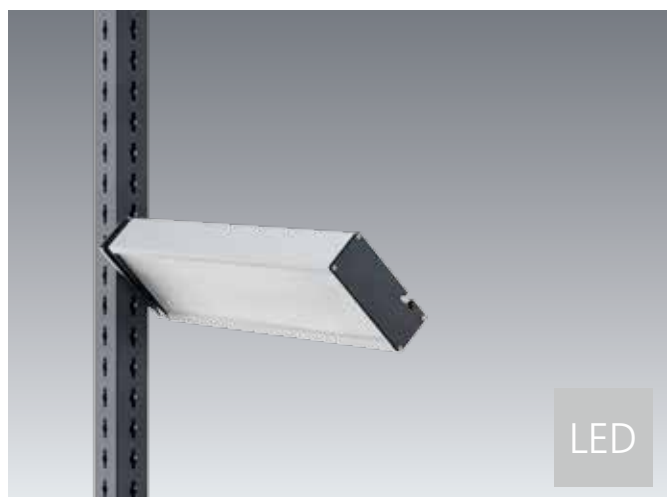
LED strip light / LED ECO strip light



- Particularly energy-efficient and long-lasting thanks to the use of LED lamps
- Low glare level thanks to prism cover in front of the lamp
- ON/OFF switch on the front of the housing
- GST-18 power supply socket on the back of the housing
- Light colour: daylight white 5500 Kelvin
- For fastening to the avero overhead arms
- Variable depth adjustment for installation at increments of 40 mm
- Type of protection IP40
- Protection class I
- Colour: anodised aluminium

System width mm	Version	Illumination level at a distance of 100 cm (average value)	Dimensions W x D x H mm	Lamp elements	Order ref.
900	eco	745 lx	898 x 140 x 40	LED 28 W	50502092.97
900	standard	1437 lx	898 x 140 x 40	LED 52 W	50502067.97
1350	eco	1003 lx	1342 x 140 x 40	LED 40 W	50502093.97
1350	standard	1958 lx	1342 x 140 x 40	LED 72 W	50502068.97
1800	eco	1201 lx	1782 x 140 x 40	LED 56 W	50502094.97
1800	standard	2331 lx	1782 x 140 x 40	LED 96 W	50502069.97

Lateral LED light rail



- Particularly energy-efficient and long-lasting thanks to the use of LED lamps
- Low glare level thanks to prism cover in front of the lamp
- ON/OFF switch on the front of the housing
- GST-18 power supply socket on the back of the housing
- Light colour: daylight white 5500 Kelvin
- For fastening to the avero vertical profile
- Variable height adjustment for installation at increments of 40 mm
- Infinitely variable inclination adjustment by +/- 30°
- Type of protection IP50
- Protection class I
- Colour: anodised aluminium

Dimensions W x D x H mm	Illumination level at a distance of 100 cm (average value)	Lamp elements	Order ref.
472 x 140 x 40	763 lx	LED 24 W	50502070.97

avero | Accessories on table set-up



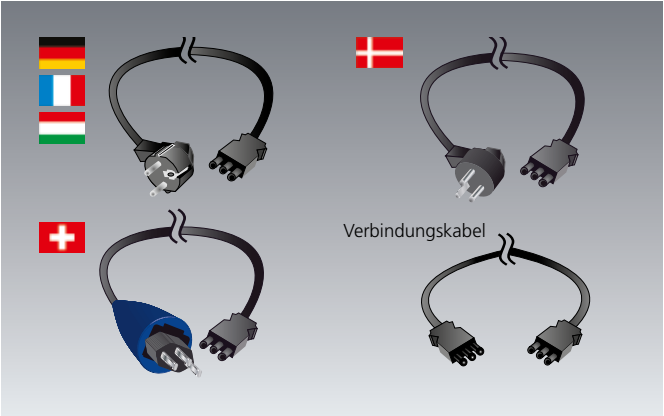
Socket strip



- For sliding into the support rails of the avero range
- With optional fixing kit to make installation on avero vertical profiles or perforated panels possible
- GST-18 connector for connection of a mains cable or connecting cable for further socket strips
- Socket strips can be fitted together directly via the GST-18 connector
- Colour: black / anodised aluminium

Version	Dimensions W x D x H mm	Suitable for	Order ref.
3x Schuko power socket 16A	220 x 44 x 52	D/HU	51001063
On/off switch, 3x Schuko power socket 16A	265 x 44 x 52	D/HU	51001064
FI 30 mA, on/off switch, 2x Schuko power socket 16A	360 x 78 x 52	D/HU	51001065
2x Schuko power socket 16A, 1x USB, 1x RJ45 (network)	220 x 44 x 52	D/HU	51001066
5x Schuko power socket 16A (plastic housing)	305 x 44 x 52	D/HU	51001124
3x power socket	220 x 44 x 52	DK	51001067
On/off switch, 3x Schuko power socket	275 x 44 x 52	DK	51001068
FI 30 mA, on/off switch, 3x power socket	400 x 78 x 52	DK	51001069
2x power socket, 1x USB, 1x RJ45 (network)	220 x 44 x 52	DK	51001070
3x power socket	220 x 44 x 52	CH	51001071
On/off switch, 3x Schuko power socket	275 x 44 x 52	CH	51001072
FI 30 mA, on/off switch, 3x power socket	400 x 78 x 52	CH	51001073
2x power socket, 1x USB, 1x RJ45 (network)	220 x 44 x 52	CH	51001074
3x power socket	220 x 44 x 52	F	51001097
On/off switch, 3x Schuko power socket	265 x 44 x 52	F	51001098
FI 30 mA, on/off switch, 2x power socket	360 x 78 x 52	F	51001099
2x power socket, 1x USB, 1x RJ45 (network)	220 x 44 x 52	F	51001100
3x power socket	285 x 44 x 52	UK	51001101
On/off switch, 3x Schuko power socket	325 x 44 x 52	UK	51001102
FI 30 mA, on/off switch, 2x power socket	455 x 78 x 52	UK	51001103
2x power socket, 1x USB, 1x RJ45 (network)	255 x 44 x 52	UK	51001104

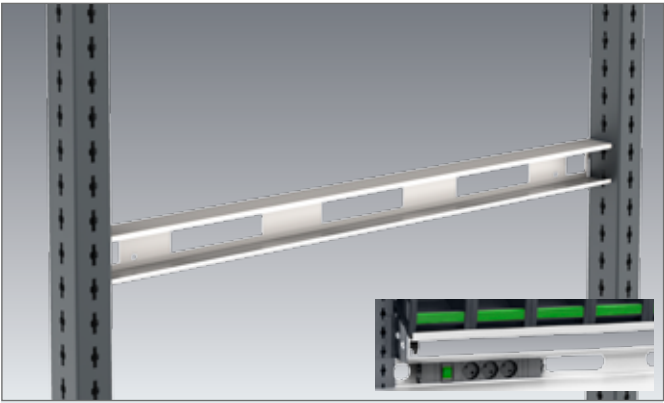
Power cable for lamps and socket strips



- GST-18 socket for connection to socket strips, service ducts and lamps

Version	Length m	Suitable for	Order ref.
Schuko plug 16A	3	D/F/HU	43503001
Schuko plug 16 A	5	D/F/HU	43503002
DK plug 13A	3	DK	43503014
DK plug 13A	5	DK	43503015
CH plug type 23	3	CH	43503012
CH plug type 23	5	CH	43503013
UK plug 13A	3	UK	43503003
UK plug 13A	5	UK	43503004
GST-18 plug - GST18-socket	1	Connecting cable	43503007
GST-18 plug - GST18-socket	3	Connecting cable	43503021

Support rail for socket strips



- For sliding into the socket strips of the avero range
- With punch-outs on the back for threading cables through
- For fastening to the avero vertical profile
- Made of conductive powder-coated sheet steel
- Colour: light grey (RAL 7035)
- UK version with additional retainer plates



For system width mm	Version	Dimensions W x D x H mm	Order ref.
450	D/F/DK/HU/CH	496 x 48 x 58	41011018.20
900	D/F/DK/HU/CH	946 x 48 x 58	41011019.20
1350	D/F/DK/HU/CH	1396 x 48 x 58	41011020.20
1800	D/F/DK/HU/CH	1846 x 48 x 58	41011021.20
450	UK	496 x 25 x 57	41011170.20
900	UK	946 x 25 x 57	41011171.20
1350	UK	1396 x 25 x 57	41011172.20
1800	UK	1846 x 25 x 57	41011173.20

Pre-configured service duct



- Modular, powder-coated sheet steel channel
- ON/OFF switch with control lamp
- EMERGENCY-OFF switch and mains protection 230 V
- Connection points on the service duct for compressed air and power supply at the bottom left
- 4 Schuko power sockets 230 V / 16 A
- 1 compressed air quick-action coupling NW 7.2 mm (UK: G 1/4)
- Blanking plates to cover empty modules
- Plug in connection cable 3m with Schuko plug 230 V / 16 A
- For fastening to the avero vertical profile
- Colour: light grey (RAL 7035)

For system width mm	Suitable for	Dimensions W x D x H mm	Order ref.
900	DE	835 x 80 x 150	51001078.16
1350	DE	1285 x 80 x 150	51001079.16
1800	DE	1735 x 80 x 150	51001080.16

Cable tray



- For attaching socket strips and cables
- Cut-outs at the side for direct access to the cable duct in the vertical profiles
- For installation underneath the table top or between the avero vertical profiles
- Made of conductive powder-coated sheet steel
- Colour: light grey (RAL 7035)

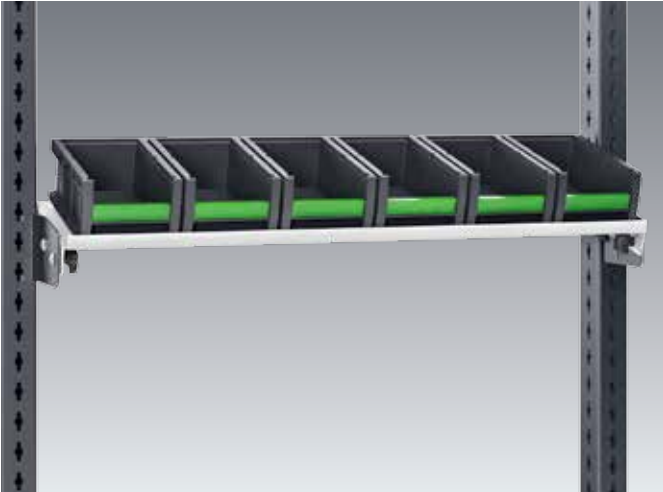
For system width mm	Dimensions W x D x H mm	Order ref.
450	398 x 86 x 100	42105032.20
675	623 x 86 x 100	42105043.20
900	848 x 86 x 100	42105033.20
1350	1298 x 86 x 100	42105034.20
1800	1748 x 86 x 100	42105035.20

avero | Accessories on table set-up



avero | Accessories on table set-up

Shelf 200 and 350 mm depth with bottBoxes



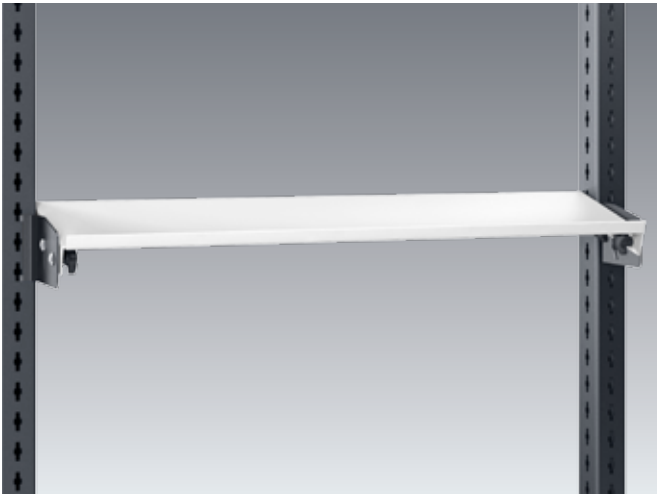
- Kitted with service trays of the bottBox series
- With hooks for suspending or screwing into the avero vertical profile
- Raised lip on one side 20 mm high, shelf can optionally be installed with the raised lip on the front or the back
- Infinitely variable inclination adjustment by +/- 30°
- Infinitely variable depth adjustment
- Load capacity 60 kg
- Made of conductive powder-coated sheet steel
- Colour: light grey (RAL 7035), bottBoxes anthracite grey (RAL 7016)
- ESD version with conductive bottBoxes (black)

For system width mm	Dimensions W x D x H mm	Depth adjustment range mm	Number of bottBoxes M2	Number of bottBoxes M3	Order ref.	Order ref. ESD
450	396 x 200 x 126	67	3		41011047.16	41011047.20
675	621 x 200 x 126	67	4		41011183.16	41011183.20
900	846 x 200 x 126	67	6		41011048.16	41011048.20
1350	1296 x 200 x 126	67	10		41011049.16	41011049.20
1800	1746 x 200 x 126	67	13		41011050.16	41011050.20
450	396 x 350 x 200	217		3	41011051.16	41011051.20
675	621 x 350 x 200	217		4	41011184.16	41011184.20
900	846 x 350 x 200	217		6	41011052.16	41011052.20
1350	1296 x 350 x 200	217		10	41011053.16	41011053.20
1800	1746 x 350 x 200	217		13	41011054.16	41011054.20



avero | Accessories on table set-up

Shelf 200 and 350 mm depth



- With hooks for suspending or screwing into the avero vertical profile
- Raised lip on one side 20 mm high, shelf can optionally be installed with the raised lip on the front or the back
- Infinitely variable inclination adjustment by +/- 30°
- Infinitely variable depth adjustment
- Load capacity 60 kg
- Made of conductive powder-coated sheet steel
- Colour: light grey (RAL 7035)

For system width mm	Dimensions W x D x H mm	Depth adjustment range mm	Order ref.
450	396 x 200 x 55	67	42105001.20
675	621 x 200 x 55	67	42105044.20
900	846 x 200 x 55	67	42105002.20
1350	1296 x 200 x 55	67	42105003.20
1800	1746 x 200 x 55	67	42105004.20
450	396 x 350 x 55	217	42105005.20
675	621 x 350 x 55	217	42105045.20
900	846 x 350 x 55	217	42105006.20
1350	1296 x 350 x 55	217	42105007.20
1800	1746 x 350 x 55	217	42105008.20



avero | Accessories on table set-up

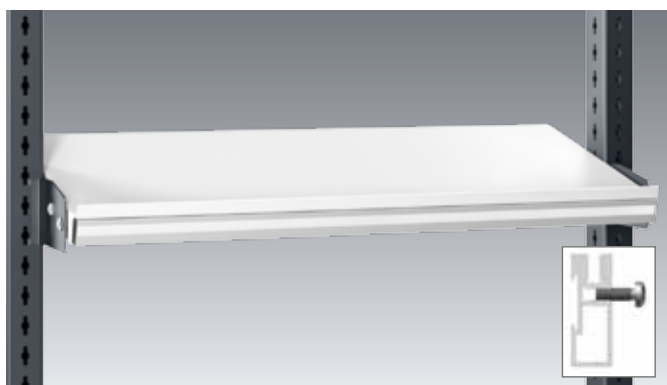
Shelf 650 mm depth



- With hooks for suspending in the avero vertical profile
- Raised lip 25 mm all the way round
- Infinitely variable inclination adjustment by +/- 30°
- Infinitely variable depth adjustment
- Load capacity 60 kg
- Made of conductive powder-coated sheet steel
- Colour: light grey (RAL 7035)

For system width mm	Dimensions W x D x H mm	Depth adjustment range mm	Order ref.
450	396 x 650 x 62	194	42105013.20
675	621 x 650 x 62	194	42105046.20
900	846 x 650 x 62	194	42105014.20
1350	1296 x 650 x 62	194	42105015.20
1800	1746 x 650 x 62	194	42105016.20
VE5 divider			41011225.20

Label strip for shelves



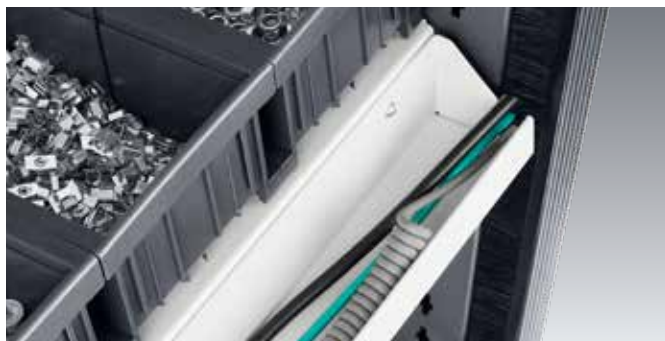
- Downloadable label document templates are available free of charge at www.bott.de/download
- Extruded aluminium profile
- For installation at the front or back
- With inserted paper strip height 16 mm
- Optimised for installation of pick-to-light modules from Armbruster Engineering
- Colour: anodised aluminium

For system width mm	Dimensions W x D x H mm	Order ref.
450	392 x 13 x 35	41011055.97
675	617 x 13 x 35	41011182.97
900	842 x 13 x 35	41011056.97
1350	1292 x 13 x 35	41011057.97
1800	1742 x 13 x 35	41011058.97
Labelling strips 10 sheets DIN A4 landscape, 3 strips per sheet, height 16 mm		43020001

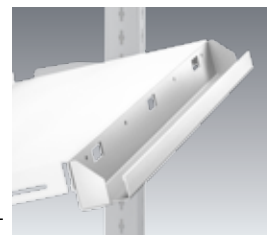
avero | Accessories on table set-up



Cable tray for shelves 200 and 350 mm depth

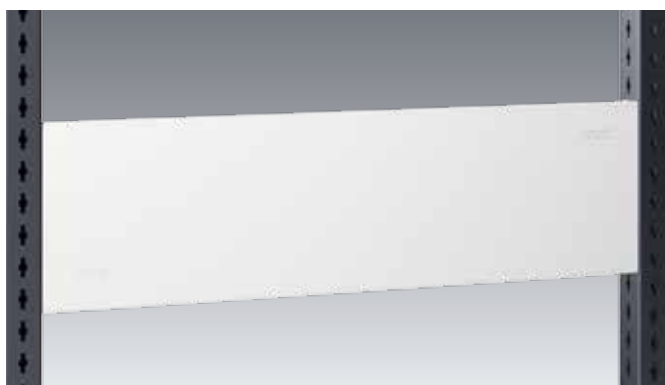


- For installation on the back of the shelves 200 mm and 350 mm deep
- Suitable for holding socket strips from the avero range
- Made of conductive powder-coated sheet steel
- Colour: light grey (RAL 7035)



For system width mm	Dimensions W x D x H mm	Order ref.
450	389 x 66 x 62	42105009.20
675	614 x 66 x 62	42105047.20
900	839 x 66 x 62	42105010.20
1350	1289 x 66 x 62	42105011.20
1800	1739 x 66 x 62	42105012.20

Vanity panel

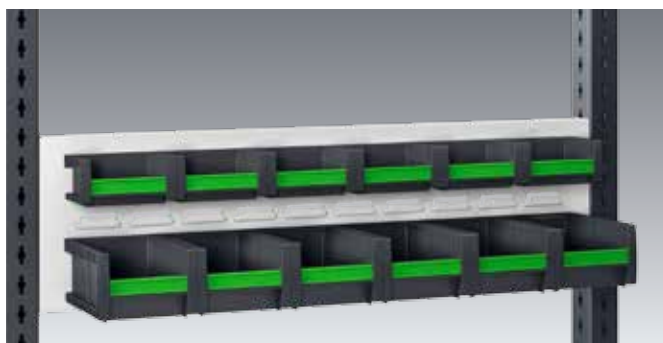


- Available in 2 heights
- For fastening to the avero vertical profile
- Made of conductive powder-coated sheet steel
- Colour: light grey (RAL 7035)

For system width mm	Dimensions W x D x H mm	Order ref.
450	398 x 36 x 240	41011030.20
675	623 x 36 x 240	41011177.20
900	848 x 36 x 240	41011031.20
1350	1298 x 36 x 240	41011032.20
1800	1748 x 36 x 240	41011033.20
450	398 x 36 x 480	41011034.20
675	623 x 36 x 480	41011178.20
900	848 x 36 x 480	41011035.20
1350	1298 x 36 x 480	41011036.20
1800	1748 x 36 x 480	41011037.20

avero | Accessories on table set-up

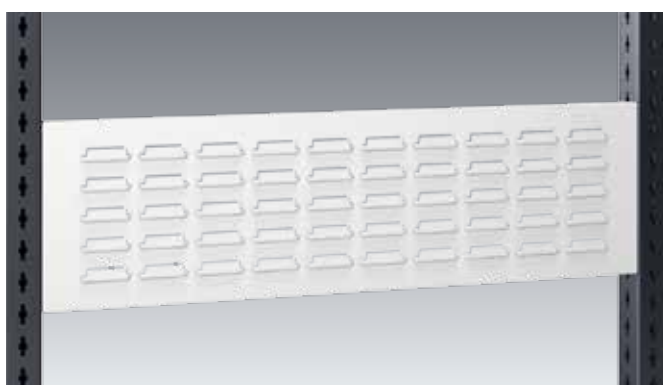
perfo louvred panel with bottBoxes



- Louvred panels with perfo louvred form
- Kitted with service trays of the bottBox series
- For fastening to the avero vertical profile
- Load capacity 40 kg
- Made of conductive powder-coated sheet steel
- Colour: light grey (RAL 7035),
bottBoxes anthracite grey (RAL 7016)
- ESD version with conductive bottBoxes (black)

For system width mm	Dimensions W x D x H mm	Number of bottBoxes M1	Number of bottBoxes M2	Order ref.	Order ref. ESD
450	398 x 244 x 240	3	3	14030181.16	14030181.20
675	623 x 244 x 240	4	4	14030213.16	140 30213.20
900	848 x 244 x 240	6	6	14030182.16	14030182.20
1350	1298 x 244 x 240	10	10	14030183.16	14030183.20
1800	1748 x 244 x 240	13	13	14030184.16	14030184.20
450	398 x 244 x 480	6	6	14030185.16	14030185.20
675	623 x 244 x 480	8	8	14030214.16	14030214.20
900	848 x 244 x 480	12	12	14030186.16	14030186.20
1350	1298 x 244 x 480	20	20	14030187.16	14030187.20
1800	1748 x 244 x 480	26	26	14030188.16	14030188.20

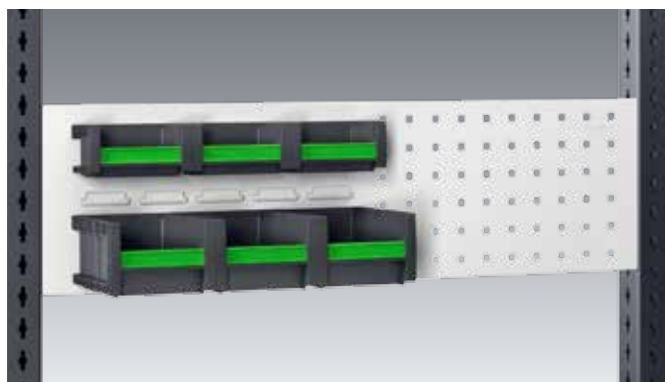
perfo louvred panel



- Available in 2 heights
- With perfo louvred form
- For attaching perfo adaptors for holders and accessories from the bott perfo product range as well as shelf boxes and stock boxes
- For fastening to the avero vertical profile
- Load capacity 40 kg
- Made of conductive powder-coated sheet steel
- Colour: light grey (RAL 7035)

For system width mm	Dimensions W x D x H mm	Order ref.
450	398 x 43 x 240	14025360.20
675	623 x 43 x 240	14025388.20
900	848 x 43 x 240	14025361.20
1350	1298 x 43 x 240	14025362.20
1800	1748 x 43 x 240	14025363.20
450	398 x 43 x 480	14025364.20
675	623 x 43 x 480	14025389.20
900	848 x 43 x 480	14025365.20
1350	1298 x 43 x 480	14025366.20
1800	1748 x 43 x 480	14025367.20

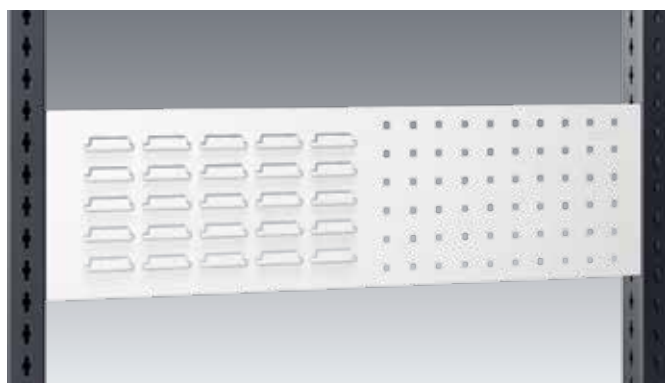
perfo combi-panel with bottBoxes



- Right half with 9.2 x 9.2 mm square perforation in 38.1 mm increments, for the attachment of holders and accessories from the bott perfo range
- Left half with perfo louvred form kitted with service trays from the bottBox series
- For fastening to the avero vertical profile
- Load capacity 40 kg
- Made of conductive powder-coated sheet steel
- Colour: combi-panels light grey (RAL 7035), bottBoxes anthracite grey (RAL 7016)
- ESD version with conductive bottBoxes (black)

For system width mm	Dimensions W x D x H mm	bottBoxes Number size M1	bottBoxes Number size M2	Order ref.	Order ref. ESD
900	848 x 53 x 240	3	3	14030190.16	14030190.20
1350	1298 x 53 x 240	5	5	14030191.16	14030191.20
1800	1748 x 53 x 240	6	6	14030192.16	14030192.20
900	848 x 53 x 480	6	6	14030194.16	14030194.20
1350	1298 x 53 x 480	10	10	14030195.16	14030195.20
1800	1748 x 53 x 480	12	12	14030196.16	14030196.20

perfo combi-panel

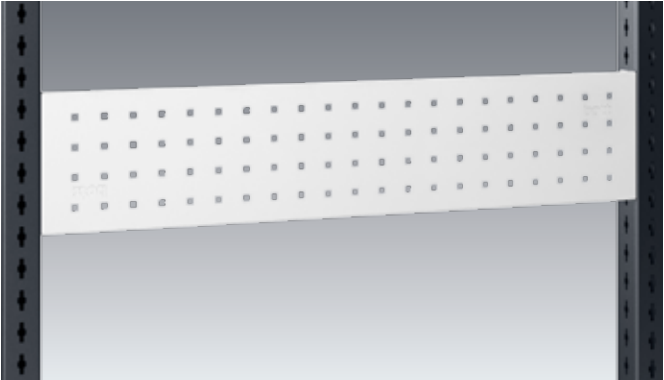


- Right half with 9.2 x 9.2 mm square perforation in 38.1 mm increments, for the attachment of holders and accessories from the bott perfo range
- Left half with perfo louvred form for attaching perfo adaptors for holders and accessories from the bott perfo product range as well as shelf boxes and stock boxes
- For fastening to the avero vertical profile
- Load capacity 40 kg
- Made of conductive powder-coated sheet steel
- Colour: light grey (RAL 7035)

For system width mm	Dimensions W x D x H mm	Order ref.
900	848 x 53 x 240	14025377.20
1350	1298 x 53 x 240	14025378.20
1800	1748 x 53 x 240	14025379.20
900	848 x 53 x 480	14025381.20
1350	1298 x 53 x 480	14025382.20
1800	1748 x 53 x 480	14025383.20

avero | Accessories on table set-up

perfo perforated panel

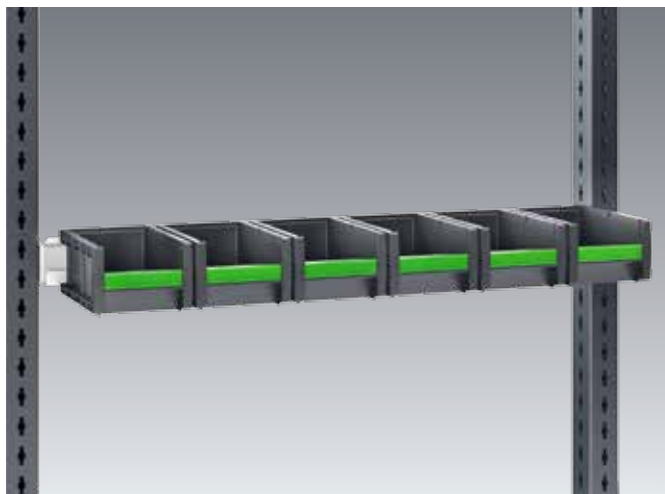


- Available in 3 heights
- 9.2 x 9.2 mm square perforation in 38.1 mm increments
- For attaching holders and accessories from the bott perfo product range
- For fastening to the avero vertical profile
- Load capacity 40 kg
- Made of conductive powder-coated sheet steel
- Colour: light grey (RAL 7035)

For system width mm	Dimensions W x D x H mm	Order ref.
450	398 x 36 x 180	14025348.20
900	848 x 36 x 180	14025349.20
1350	1298 x 36 x 180	14025350.20
1800	1748 x 36 x 180	14025351.20
450	398 x 36 x 240	14025340.20
675	623 x 36 x 240	14025386.20
900	848 x 36 x 240	14025341.20
1350	1298 x 36 x 240	14025342.20
1800	1748 x 36 x 240	14025343.20
450	398 x 36 x 480	14025344.20
675	623 x 36 x 480	14025387.20
900	848 x 36 x 480	14025345.20
1350	1298 x 36 x 480	14025346.20
1800	1748 x 36 x 480	14025347.20



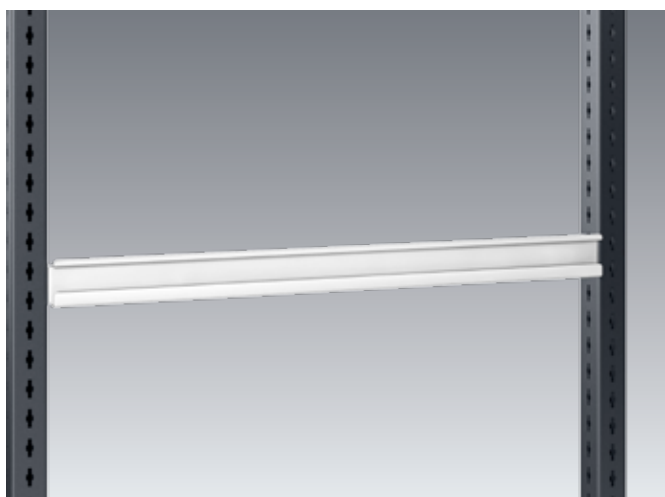
Support rail set with bottBoxes



- Kitted with service trays of the bottBox series
- For fastening to the avero vertical profile
- Load capacity 25 kg
- Made of conductive powder-coated sheet steel
- Colour: light grey (RAL 7035), bottBoxes anthracite grey (RAL 7016)
- ESD version with conductive bottBoxes (black)
- Support rail of system width 675 mm is hooked into the front of the profile

For system width mm	Dimensions W x D x H mm	Number of bottBoxes	Order ref.	Order ref. ESD
450	398 x 265 x 90	3x M2	41011040.16	41011040.20
675	675 x 150 x 75	5x M1	41011181.16	41011181.20
900	848 x 270 x 90	6x M2	41011041.16	41011041.20
1350	1298 x 270 x 90	10x M2	41011042.16	41011042.20

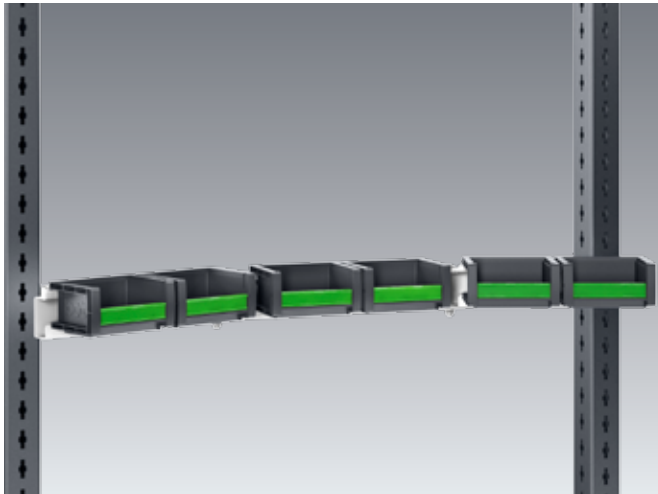
Support rail



- For fastening to the avero vertical profile
- Load capacity 25 kg
- Made of conductive powder-coated sheet steel
- Colour: light grey (RAL 7035)
- Support rail of system width 675 mm is hooked into the front of the profile

For system width mm	Dimensions W x D x H mm	Order ref.
450	398 x 75 x 65	41011014.20
675	675 x 50 x 65	41011180.20
900	848 x 75 x 65	41011015.20
1350	1298 x 75 x 65	41011016.20

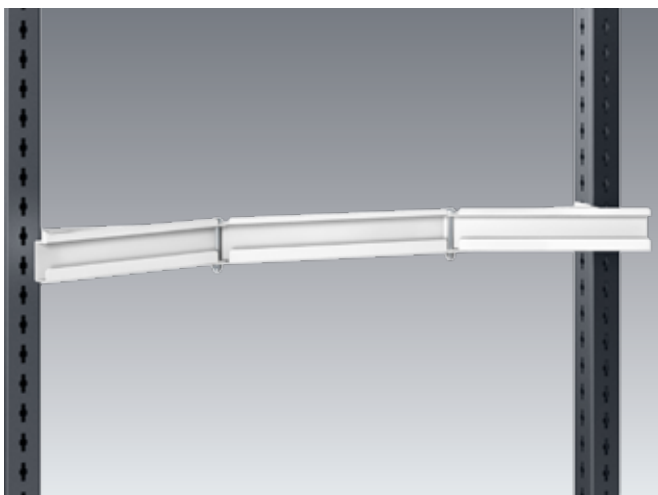
Joint rail set with bottBoxes



- Kitted with service trays of the bottBox series
- Fixed centre rail, two swivelling outer rails on the left and right for the ergonomic arrangement of service trays at an optimum reaching distance
- Swivel range of the outer rails 45°
- For fastening to the avero vertical profile
- Load capacity 25 kg
- Made of conductive powder-coated sheet steel
- Colour: light grey (RAL 7035), bottBoxes anthracite grey (RAL 7016)
- ESD version with conductive bottBoxes (black)

For system width mm	Dimensions W x D x H mm	Width of centre rails mm	Width of outer rails mm	Number of bottBoxes M1	Order ref.	Order ref. ESD
900	848 x 185 x 77	334	280	6	41011044.16	41011044.20
1350	1298 x 185 x 77	784	280	9	41011045.16	41011045.20

Joint rail



- For attaching shelf boxes and stock boxes
- Fixed centre rail, two swivelling outer rails on the left and right for the ergonomic arrangement of service trays at an optimum reaching distance
- Swivel range of the outer rails 45°
- For fastening to the avero vertical profile
- Load capacity 25 kg
- Made of conductive powder-coated sheet steel
- Colour: light grey (RAL 7035)

For system width mm	Dimensions W x D x H mm	Width of centre rails mm	Width of outer rails mm	Order ref.
900	848 x 89 x 65	334	280	41011022.20
1350	1298 x 89 x 65	784	280	41011023.20

Grab box



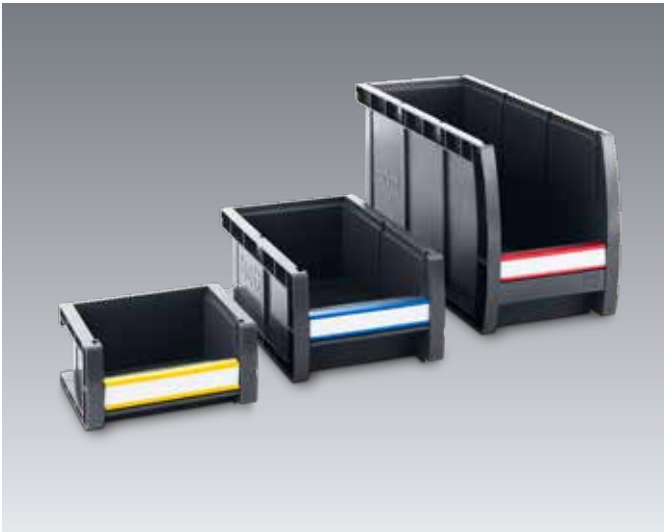
- Sturdy, durable shelf box made of polypropylene
- Easy to clean thanks to smooth inner sides
- bottBoxes of the same width are stackable
- Removable label clip for sliding in a paper strip (H = 16 mm)
- Optional label clips in 3 further colours available for colour coding
- Ergonomic recessed grip at the front
- Additional gripping option at the back from size M3
- Strip at the back for suspension in louvred panels
- Possibility of inserting a stock card in bank card format on the back from size M2
- Colour: anthracite grey (RAL 7016) / ESD version black

Info Sizes M1, M2 and M3 have been designed to match the avero system perfectly!

Description Grab box	Load capacity Carrying position in kg	Load capacity Suspended position in kg	Dimensions W x D x H mm	Packing unit	Order ref.	Order ref. ESD
M1	2	2	130 x 100 x 65	48	13022045.19	13022045.72
M2	4	3	130 x 198 x 90	36	13022046.19	13022046.72
M3	8	5	130 x 298 x 165	24	13022047.19	13022047.72
M4	10	5	130 x 398 x 165	12	13022049.19	



Label clip / labelling strip

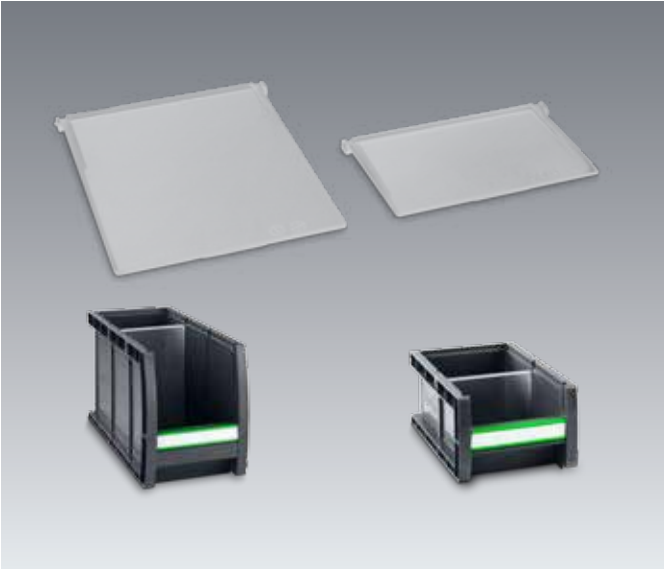


- For colour coding the bottBoxes
- With groove for insertion of a paper strip (H = 16 mm)
- For clipping onto the bottBox body

Dimensions W x D x H mm	Clip colour	Packing unit	Order ref.
103 x 11 x 20	yellow RAL 1023	36	13022024.12
103 x 11 x 20	blue RAL 5010	36	13022024.11
103 x 11 x 20	red RAL 3001	36	13022024.04
103 x 11 x 20	yellow, blue, red	12 + 12 + 12	13022025
	18x labelling strips	10 sheets	43020001



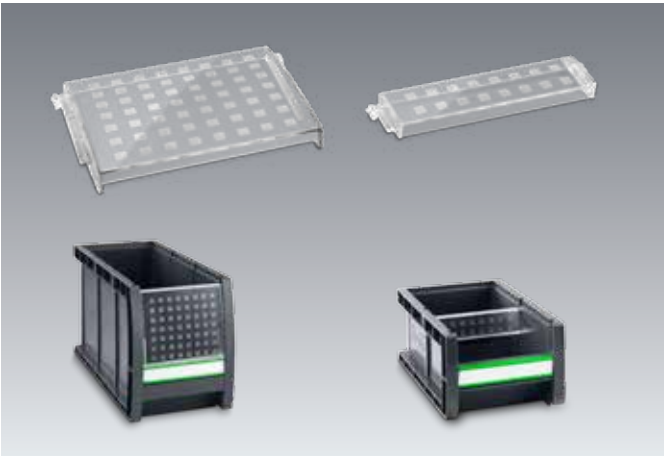
Divider for boxes



- For dividing the bottBoxes crossways from size M2
- Transparent polycarbonate (PC) makes it easier to see the contents of the rear part of the box
- Colour: transparent
- Pack of 6

Suitable for	Dimensions W x D x H mm	Order ref.
M2	118 x 6 x 68	13022031
M3, M4	118 x 6 x 143	13022032

Viewing window for boxes / dispensers



- For insertion on the front of the bottBox
- Turns the service tray into a full-grade storage box with maximum usable storage volume
- Transparent polycarbonate (PC) makes it easier to see the contents of the box
- From size M2, the viewing window may also be used as a dispensing panel, thereby creating ergonomic access at the front of the box whilst retaining the maximum usable volume at the rear of the box
- Colour: transparent
- Pack of 6

Suitable for	Dimensions W x D x H mm	Order ref.
M1, M2	118 x 12 x 27	13022028
M3, M4	118 x 12 x 88	13022029
L3, L4, L5	152 x 12 x 88	13022030

Euroboxes



- Container fits standard europallet sizes
- For all storage, production and transport needs
- Straight walls offer maximum volume with excellent strength
- Optional covers available
- Resistant to numerous acids and alkalis
- Temperature resistance -20 °C to +60 °C, for a short time also up to +90 °C
- Material: polypropylene
- Colour: anthracite grey

Pack quantity **1-3**

Width mm	Depth mm	Height mm	Pack quantity	Order ref.
200	300	120	1	62510019.19V
400	300	120	1	62510013.19V
		175	1	62510020.19V
		235	1	62510014.19V
		320	1	62510015.19V
Cover for eurobox (W 400 x D 300 mm)			3	12204064
600	400	120	1	62510016.19V
		175	1	62510021.19V
		220	1	62510017.19V
		320	1	62510018.19V
Cover for eurobox (W 600 x D 400 mm)				12204065
800	400	175	1	02510035.19
1145	400	175	1	02510036.19

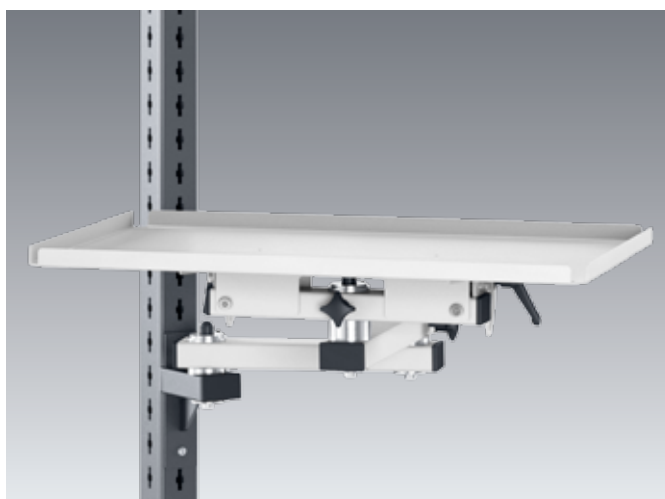
Swivel arm with shelf which can be rotated & tilted for euronorm box 400 x 300 mm



- Complete set incl. securing bracket, swivel arm and system fixing
- Shelf can be turned through 360° and inclined infinitely variable from 0-45°, fixed with clamp lever
- Safety lip at the front
- 3 hinged joints, 2 swivel arms length 350 and 300 mm
- For fastening to the avero vertical profile
- Load capacity 25 kg
- Made of conductive powder-coated sheet steel
- Colour: light grey (RAL 7035)

Dimensions W x D mm	Height of shelf safety lip mm	Order ref.
315 x 405	15	41011059.20
415 x 305	15	41011060.20

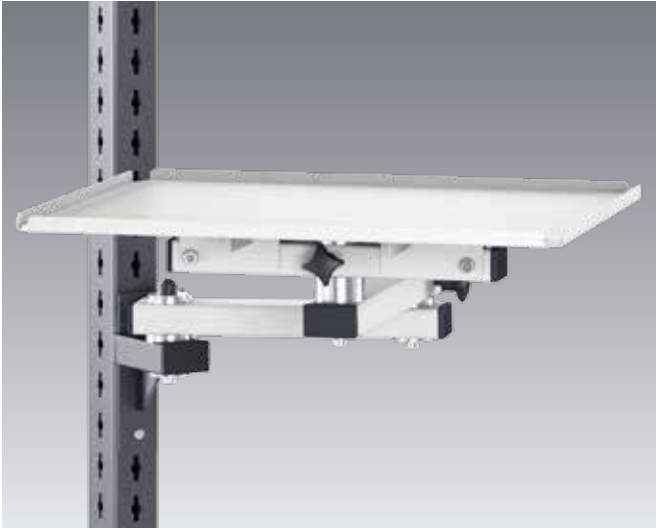
Swivel arm with shelf which can be rotated & tilted for euronorm box 600 x 400 mm



- Complete set incl. securing bracket, swivel arm and system fixing
- Tray can be turned through 360° and inclined, infinitely variable from 0-45°, fixed with clamp lever
- Safety lip all the way round
- 3 hinged joints, 2 swivel arms length 350 and 300 mm
- For fastening to the avero vertical profile
- Load capacity 25 kg
- Made of conductive powder-coated sheet steel
- Colour: light grey (RAL 7035)

Dimensions W x D mm	Height of shelf safety lip mm	Order ref.
610 x 410	15	41011062.20

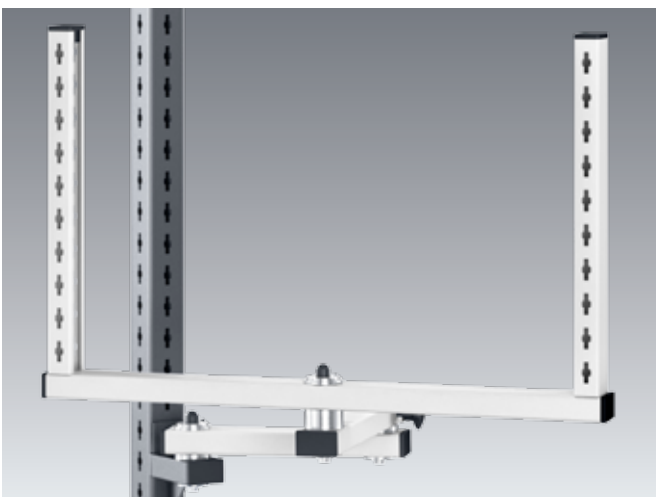
Swivel arm with rotatable shelf



- Complete set incl. securing bracket, swivel arm and system fixing
- Shelf can be turned through 360°
- Safety lip all the way round
- 3 hinged joints, 2 swivel arms length 350 and 300 mm
- For fastening to the avero vertical profile
- Load capacity 25 kg
- Made of conductive powder-coated sheet steel
- Colour: light grey (RAL 7035)

Dimensions W x D mm	Height of shelf safety lip mm	Order ref.
500 x 400	15	41011061.20

Swivel arm with system frame



- Complete set incl. securing bracket, swivel arm and system frame
- System frame can be turned through 360°
- 2-sided avero perforation on the side of the frame for attachment of avero accessories with system width 675 mm
- Can be configured on both sides
- 3 hinged joints, 2 swivel arms length 350 and 300 mm
- For fastening to the avero vertical profile
- Load capacity 25 kg
- Made of conductive powder-coated sheet steel
- Colour: light grey (RAL 7035)

System width mm	Dimensions W x D x H mm	Order ref.
675	715 x 590 x 700	41011186.20

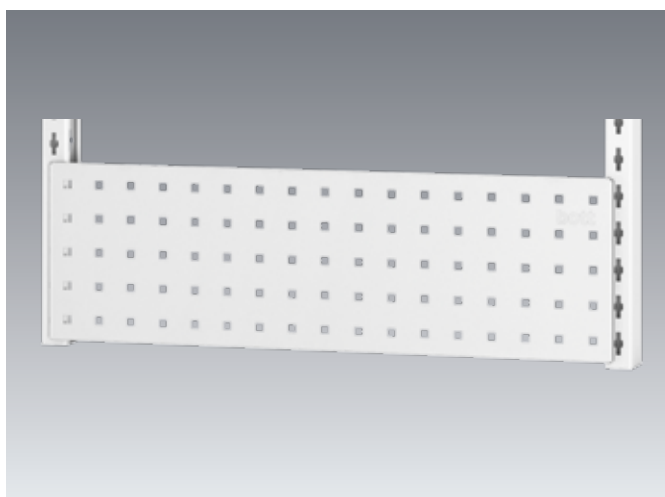
Swivel frame



- For the ergonomic arrangement of assembly fixing and tools within optimum reach
- 2-sided avero perforation on the side of the frame for attachment of avero accessories with system width 675 mm
- Can be configured on both sides
- Can be swivelled through 0-90°
- Can be fixed with clamp lever
- For fastening to the avero vertical profile
- Load capacity 50 kg
- Made of conductive powder-coated sheet steel
- Colour: anthracite grey (RAL 7016)
- ESD version with EMC contact strap

System width mm	Dimensions W x D x H mm	Usable height mm	Order ref.	Order ref. ESD
675	701 x 53 x 950	920	41011187.19	41011187.71

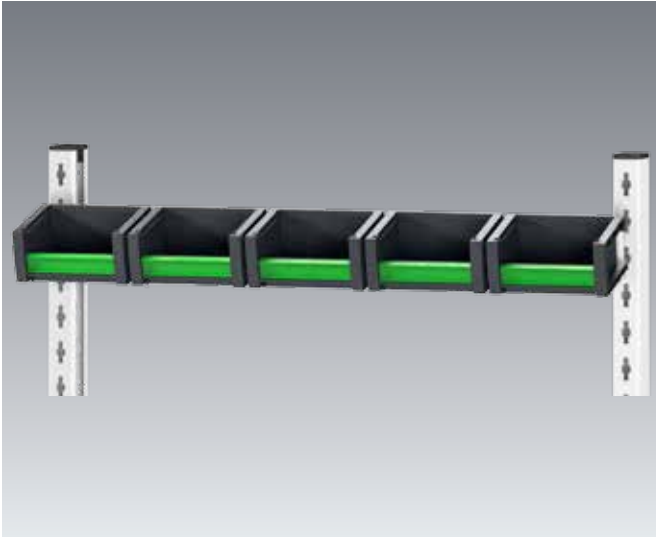
perfo perforated panel for system and swivel frame profile



- 9.2 x 9.2 mm square perforation in 38.1 mm increments
- For attaching holders and accessories from the bott perfo product range
- For suspension in the avero system and swivel frame profile
- Load capacity 15 kg
- Made of conductive powder-coated sheet steel
- Colour: light grey (RAL 7035)

For system width mm	Dimensions W x D x H mm	Order ref.
675	675 x 20 x 200	14025385.20

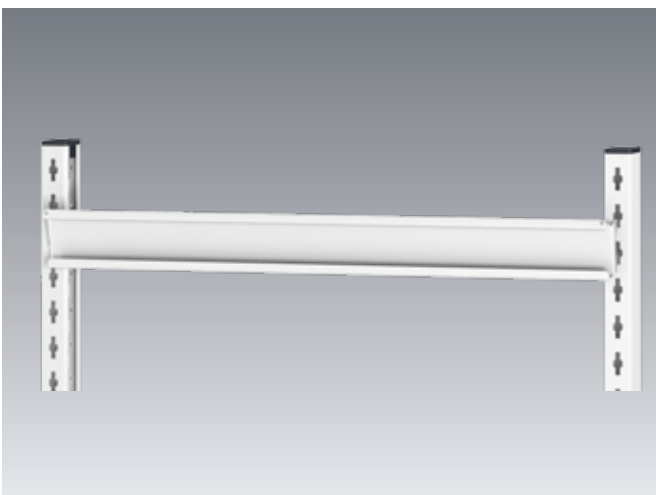
Support rail set with bottBoxes for system and swivel frame profile



- Kitted with service trays of the bottBox series
- For suspension in the avero system and swivel frame profile
- Load capacity 25 kg
- Made of conductive powder-coated sheet steel
- Colour: light grey (RAL 7035),
bottBoxes anthracite grey (RAL 7016)
- ESD version with conductive bottBoxes (black)

For system width mm	Dimensions W x D x H mm	Number of bottBoxes M1	Order ref.	Order ref. ESD
675	675 x 140 x 82	5	41011181.16	41011181.20

Support rail for system and swivel frame profile

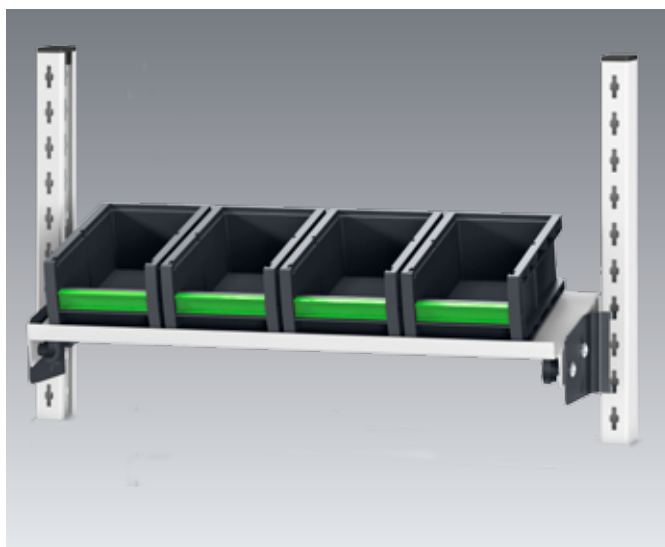


- For attaching service trays and stock boxes
- For suspension in the avero system and swivel frame profile
- Load capacity 25 kg
- Made of conductive powder-coated sheet steel
- Colour: light grey (RAL 7035)

For system width mm	Dimensions W x D x H mm	Order ref.
675	675 x 50 x 70	41011180.20

avero | Accessories for system frame and swivel frame

Shelf set with bottBoxes for system, swivel frame profile and parts trolley width 675 mm



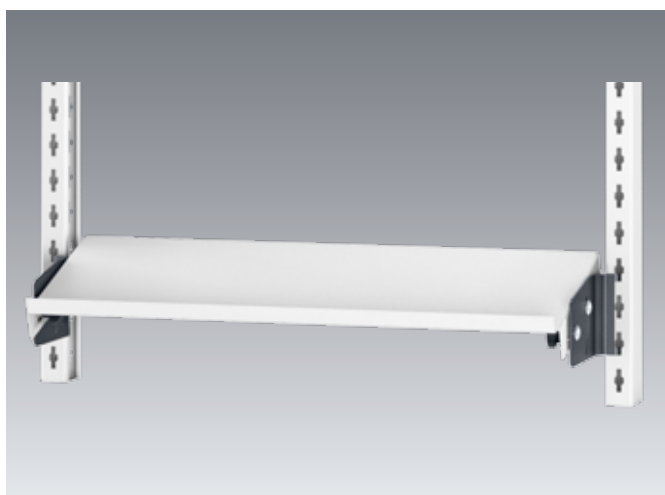
- Kitted with service trays of the bottBox series
- With hooks for suspending or screwing into the avero vertical profile
- Raised lip on one side 20 mm high, shelf can optionally be installed with the raised lip on the front or the back
- Infinitely variable inclination adjustment by +/- 30°
- Infinitely variable depth adjustment
- Load capacity 25 kg
- Made of conductive powder-coated sheet steel
- Colour: light grey (RAL 7035),
bottBoxes anthracite grey (RAL 7016)
- ESD version with conductive bottBoxes (black)

Info

Also suitable for parts and supply trolley 675 mm, refer to page 94 onwards for this

For system width mm	Dimensions W x D x H mm	Depth adjustment range mm	Number of bottBoxes M2	Number of bottBoxes M3	Order ref.	Order ref. ESD
675	621 x 200 x 126	67	4		41011183.16	41011183.20
675	621 x 350 x 200	217		4	41011184.16	41011184.20

Shelf for system, swivel frame profile and parts trolley width 675 mm



- With hooks for suspending or screwing into the avero vertical profile
- Raised lip on one side 20 mm high, shelf can optionally be installed with the raised lip on the front or the back
- Infinitely variable inclination adjustment by +/- 30°
- Infinitely variable depth adjustment
- Load capacity 25 kg
- Made of conductive powder-coated sheet steel
- Colour: light grey (RAL 7035)

Info

Also suitable for parts and supply trolley 675 mm, refer to page 94 onwards for this

For system width mm	Dimensions W x D x H mm	Depth adjustment range mm	Order ref.
675	621 x 200 x 55	67	42105044.20
675	621 x 350 x 55	217	42105045.20

avero | Accessories for system frame and swivel frame

Shelf depth 650 mm – width 675 mm



- With hooks for suspending or screwing into the avero vertical profile
- Raised lip 25 mm all the way round
- Infinitely variable inclination adjustment by +/- 30°
- Infinitely variable depth adjustment
- Load capacity 60 kg
- Made of conductive powder-coated sheet steel
- Colour: light grey (RAL 7035)

Info

Also suitable for parts and supply trolley 675 mm, refer to page 94 onwards for this

For system width mm	Depth adjustment range mm	Dimensions W x D x H mm	Order ref.
675	204	621 x 650 x 62	42105046.20
VES divider			41011225.20

Cable tray for shelves width 675 mm



- For installation on the back of the shelves 200 mm and 350 mm deep
- Suitable for holding socket strips from the avero range
- Made of conductive powder-coated sheet steel
- Colour: light grey (RAL 7035)

For system width mm	Dimensions W x D x H mm	Order ref.
675	621 x 66 x 62	42105047.20

avero | Accessories for system frame and swivel frame

Label strip for shelf width 675 mm



- Downloadable label document templates are available free of charge at www.bott.de/download
- Self-tapping screw M4 x 12
- For installation at the front or back
- With inserted paper strip height 16 mm
- Optimised for installation of pick-to-light modules from Armbruster Engineering
- Extruded aluminium profile
- Colour: anodised aluminium

For system width mm	Dimensions W x D x H mm	Order ref.
675	617 x 13 x 35	41011182.97
Labelling strips 10 sheets DIN A4 landscape, 3 strips per sheet, height 16 mm		43020001



avero | Accessories for system frame and swivel frame

Rack set 675 mm with bottBoxes



- Kitted with service trays of the bottBox series
- Height-adjustable in increments of 40 mm
- For suspension in the avero system and swivel frame profile
- Load capacity 20 kg
- Made of conductive powder-coated sheet steel
- Colour: light grey (RAL 7035),
bottBoxes anthracite grey (RAL 7016)
- ESD version with conductive bottBoxes (black)

Info Also suitable for parts and supply trolleys 675 mm, refer to page 94 onwards for this

For system width mm	Dimensions W x D x H mm	Number of bottBoxes	Order ref.	Order ref. ESD
675	700 x 228 x 458	15x M2	41011189.16	41011189.20

Rack 675 mm



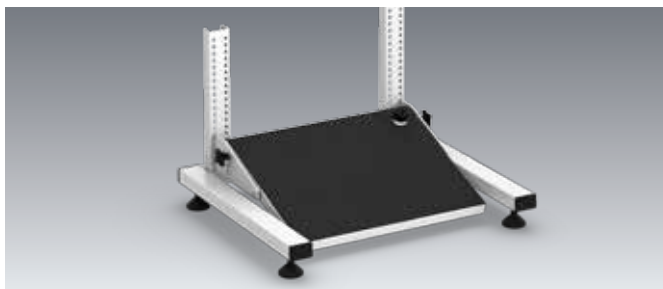
- For three-row assembly with shelf boxes up to max. 195 mm depth
- Height-adjustable in increments of 40 mm
- For suspension in the avero system and swivel frame profile
- Load capacity 20 kg
- Made of conductive powder-coated sheet steel
- Colour: light grey (RAL 7035)

Info Also suitable for parts and supply trolley 675 mm, refer to page 94 onwards for this

For system width mm	Dimensions W x D x H mm	Order ref.
675	700 x 211 x 407	41011188.20

avero | Accessories for table base

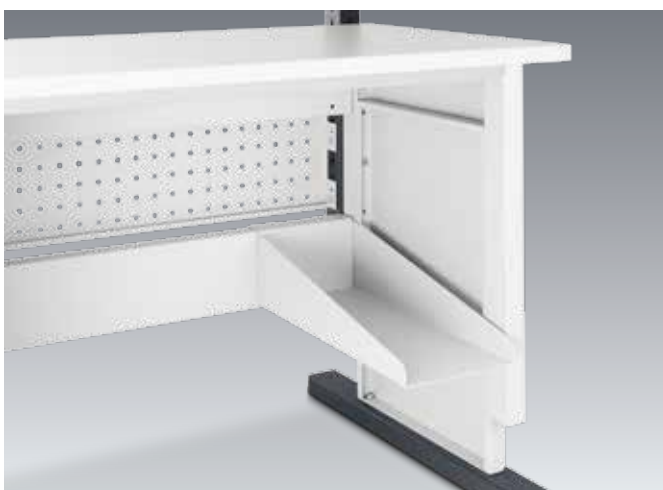
Footrest



- Ergonomic footrest area 445 x 350 mm (W x D)
- Infinitely-variable foot pedal angle adjustment between 0° to 20°
- 210 mm height adjustable in 15 mm increments
- Meets requirements according to DIN4556
- Setup space adjustment range is 50-260 mm from the floor
- With slip-resistant, ribbed rubber mat
- Free-standing version with 4 adjustable feet for evening out floor unevenness
- Suspended version with two supports for hooking onto bench stringers
- Colour: metal parts light grey conductive powder coating (RAL 7035), ribbed rubber mat black
- ESD version with conductive, ribbed rubber mat, conductive adjustable feet (freestanding version) and earthing cable (suspended version)

Type of installation	Order ref.	Order ref. ESD
Suspended	41402003.16	41402003.20
Freestanding	41402004.16	41402004.20

Computer holder



- For suspending in the cross brace of the avero table rack
- Made of powder-coated sheet steel
- Base plate for the attachment of computer housings up to a height of 465 mm
- Colour: light grey conductive powder coating (RAL 7035)



Dimensions W x D x H mm	Order ref.
220 x 544 x 134	41011113.20

avero | Accessories for table base



Suspended drawer cabinet ESD



- For installation under avero single workstations, multi-workstations and handling lines
- Optionally with central lock/cubioKey for all drawers or without lock
- Locking cylinder can be changed with cylinder removal key without tools
- Drawers with 100% full extension slide
- Drawer body made of zinc-plated sheet steel
- Load capacity 30 kg per drawer
- Drawer 400 mm high with additional, depth-adjustable small parts tray
- Drawer pull-out lock with variants with lock/cubioKey
- Made of conductive powder-coated sheet steel
- Colour: light grey (RAL 7035)

Version	Drawers mm	Dimensions W x D x H mm	Order ref.
Without lock	2x 200	225 x 500 x 500	40033013.20
With lock/cubioKey	2x 200	225 x 500 x 500	40033014.20
Without lock	1x 400	225 x 500 x 500	40033015.20
With lock/cubioKey	1x 400	225 x 500 x 500	40033016.20

Suspended drawer cabinet ESD



- For installation under avero single workstations, multi-workstations and handling lines
- Optionally with central lock/cubioKey for all drawers or without lock
- Locking cylinder can be changed with cylinder removal key without tools
- Drawers with 100% full extension slide
- Drawer body made of zinc-plated sheet steel
- Load capacity 30 kg per drawer
- Drawer pull-out lock with variants with lock/cubioKey
- Made of conductive powder-coated sheet steel
- Colour: light grey (RAL 7035)

Version	Drawers mm	Dimensions W x D x H mm	Order ref.
Without lock	2x 100	375 x 500 x 300	40033017.20
With lock/cubioKey	2x 100	375 x 500 x 300	40033018.20
Without lock	1x 200	375 x 500 x 300	40033019.20
With lock/cubioKey	1x 200	375 x 500 x 300	40033020.20

Suspended drawer cabinet ESD



- For installation under avero single workstations, multi-workstations and handling lines
- Optionally with central lock/cubioKey for all drawers or without lock
- Locking cylinder can be changed with cylinder removal key without tools
- Drawers with 100% full extension slide
- Drawer body made of zinc-plated sheet steel
- Load capacity 30 kg per drawer
- Drawer pull-out lock with variants with lock/cubioKey
- Made of conductive powder-coated sheet steel
- Colour: light grey (RAL 7035)

Version	Drawers mm	Dimensions W x D x H mm	Order ref.
Without lock	4x 100	375 x 500 x 500	40033021.20
With lock/cubioKey	4x 100	375 x 500 x 500	40033022.20
Without lock	2x 200	375 x 500 x 500	40033023.20
With lock/cubioKey	2x 200	375 x 500 x 500	40033024.20

cubio suspended drawer cabinet

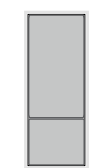


- Intelligent drawer blocking mechanism prevents more than one drawer opening at once
- Mechanical cabinet lock with 5-pin interchangeable cylinder for optional locking system design
- Optional cubioPIN electronic locking system
- All drawers supplied with full extension slide, 100% extension and 40 mm overextension
- ESD version all drawers with partial extension 93% and 100 kg load capacity
- Standard duty slide with 75 kg load capacity
- Ergonomic handle with access from above and below
- Colour: light grey (RAL 7035)

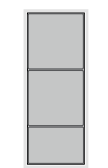
Version	Dimensions W x D x H mm	Order ref.	Order ref. ESD
1x 150 mm drawer	525 x 525 x 250	40010001.16V	40010001.20V
1x 300 mm drawer	525 x 525 x 400	40010126.16V	40010126.20V
2x 150 mm drawer	525 x 525 x 400	40010005.16V	40010005.20V
2x 75 mm drawer + 1x 150 mm drawer	525 x 525 x 400	40010106.16V	40010106.20V

avero | Accessories for suspended cabinets

Small parts storage boxes kit suitable for suspended cabinet width 225 x depth 500 mm



43020611

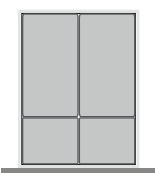


43020612

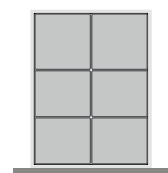
Number of small parts storage boxes mm		Front height of the drawer	Height of the small parts storage boxes	Order ref.
150 x 125	150 x 275			
1	1	from 100 mm	75 mm	43020611

Number of small parts storage boxes mm		Front height of the drawer	Height of the small parts storage boxes	Order ref.
150 x 100	150 x 150			
1	2	from 100 mm	75 mm	43020612

Small parts storage boxes kit suitable for suspended cabinet width 375 x depth 500 mm



43020613



43020614

Number of small parts storage boxes mm		Front height of the drawer	Height of the small parts storage boxes	Order ref.
150 x 125	150 x 275			
2	2	from 100 mm	75 mm	43020613

Number of small parts storage boxes mm		Front height of the drawer	Height of the small parts storage boxes	Order ref.
150 x 125	150 x 150			
4	2	from 100 mm	75 mm	43020614

Dividers and cross dividers kit suitable for suspended cabinet width 375 x depth 500 mm

Quantity of dividers	Quantity of cross dividers	Order ref.
–	2	43020621

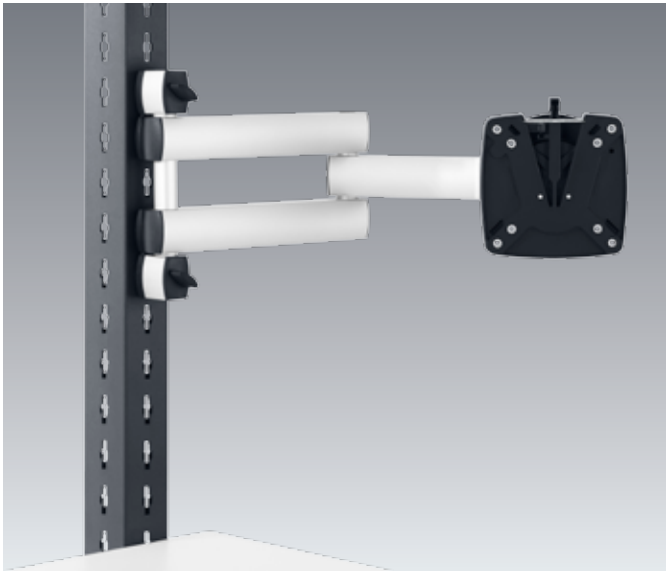
Swivel castor set for cubio drawer cabinet depth 525 mm



- 2 cross members for installation under the cubio drawer cabinets 525 x 525 mm
- 4 swivel castors diameter 75 mm
- Colour:
cross members anthracite grey conductive powder coating (RAL 7016), swivel castors black
- ESD version with conductive swivel castors

Dimensions W x D x H mm	Order ref.	Order ref. ESD
525 x 525 x 100	41430082.19	41430082.71

Monitor swivel arm

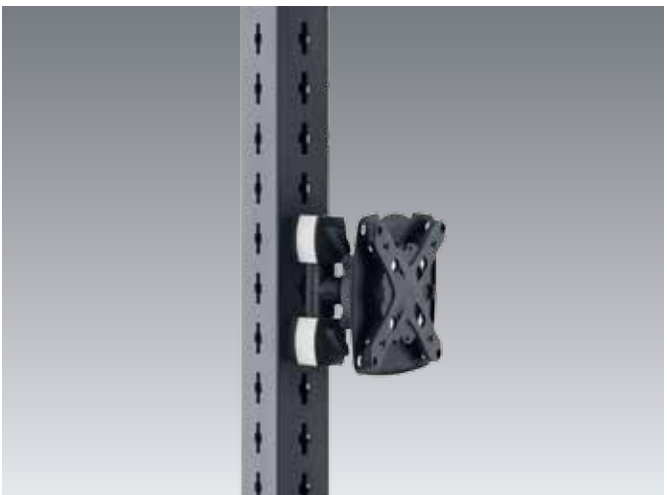


- Reinforced, two-piece articulated arm with a range of 505 mm
- Ball head joint for the flexible tilting and rotation of the monitor
- Removable monitor support plate with VESA 75/100 attachment
- For monitors up to 15 kg in weight
- For fastening to the avero vertical profile
- Colour: anodised aluminium



	Order ref.
	41011087

Monitor holder, short



- Ball head joint for the flexible tilting and rotation of the monitor
- Removable monitor support plate with VESA 75/100 attachment
- For monitors up to 15 kg in weight
- For fastening to the avero vertical profile
- Colour: anodised aluminium



Version	Dimensions W x D x H mm	Order ref.
Monitor holder, short	–	41011086

perfo monitor holder, short



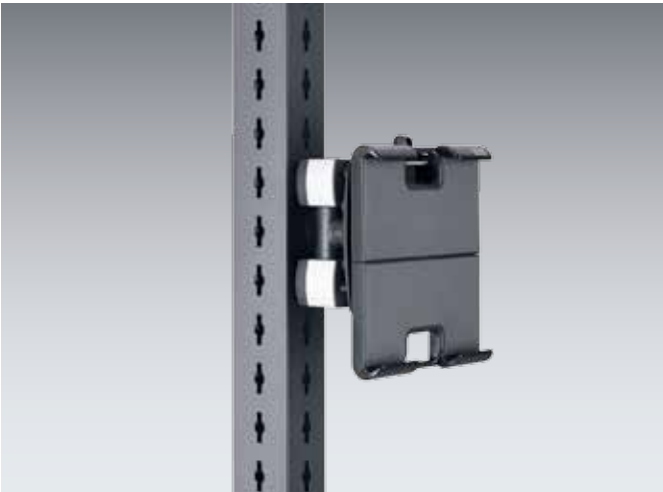
- Removable monitor support plate with VESA 75/100 attachment
- Flexible tilting and rotation of the monitor
- For monitors up to 10 kg in weight
- For fastening to perfo perforated panels
- Colour: anthracite grey (RAL 7016)

Info Note: does not fit on perfo perforated panel height 180 mm



Dimensions W x D x H mm	Order ref.
114 x 65 x 170	41011163

Tablet holder



- Plastic holder for tablets with sizes between 7 and 10 inches (clamping length 160-300 mm)
- For attaching to the monitor swivel arm, a short monitor holder or short perfo monitor holder
- Delivered without monitor holder
- Load capacity 0.75 kg
- Colour: black

Dimensions W x D x H mm	Order ref.
153 x 42 x 175 - 320	41011192

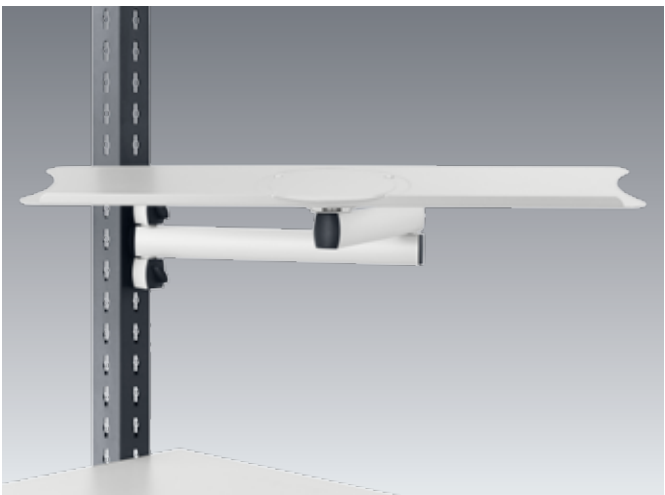
Keyboard holder for monitor swivel arm and monitor holder



- For fastening to monitor support plates
- Shelf area 640 x 200 mm (W x D)
- Delivered without monitor swivel arm
- Load capacity 3 kg
- Colour: light grey (RAL 7035)

Shelf area W x D mm	Order ref.
640 x 200	42105024.20

Swivel arm for keyboard



- Two-piece articulated arm with a range of 505 mm
- Tilting and rotating tray, surface area 640 x 170 mm (W x D)
- Load capacity 10 kg
- Colour: anodised aluminium / silver



Shelf area W x D mm	Order ref.
640 x 170	41011085

Keyboard drawer

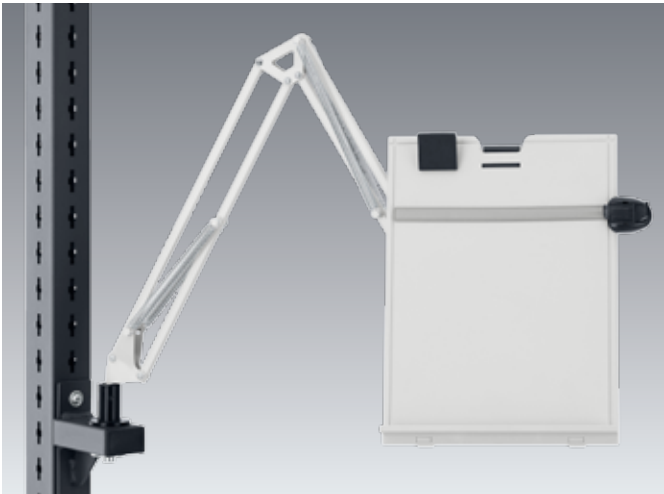


- For holding a standard PC keyboard
- For fastening to the stringers of the avero base frame
- Ergonomic palm rest
- Housing made of sheet steel
- Keyboard drawer made of plastic
- Load capacity 5 kg
- Colour: light grey

Dimensions W x D x H mm	Useful area for keyboard mm	Order ref.
560 x 400 x 100	525 x 250 x 75	40519010



Drawing holder



- Clipboard for documents up to DIN A4 portrait format
- Spring-supported articulated arms
- Height-adjustable rule
- For fastening to the tabletop or, optionally, to the avero vertical profile
- Colour: light grey

Version	Order ref.	
Drawing holder	81005004	
Adaptor for fastening to the avero vertical profile	41011088.19	

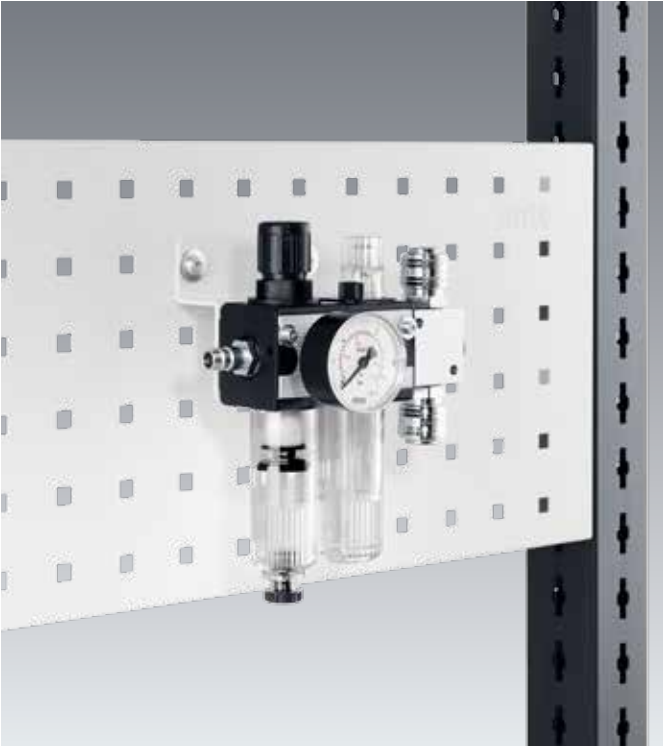
Display panel system with holder



- Holder system with 10 transparent hinged panels for the dirt-free storage of information sheets
- Suitable for holding DIN A4 sheets in portrait format
- For fastening to the avero vertical profile
- Colour: holder stainless steel, swivelling panel frame red
- ESD version with black swivelling panel frame

	Order ref.	Order ref. ESD
	41011089	41011151

Pneumatics



- For fastening to perfo perforated panels
- Input quick-action coupling G1/4"
- Output quick-action coupling 2x G1/4



Description	Order ref.
Supply unit, pressure regulator, filter, lubrication	80002001
Manifold	80001007

Balancer



- For suspending from the carriage snap hooks of the avero overhead rail

Description	Extension length mm	Load capacity kg	Order ref.
Balancer with cable pull	2300	1.0 to 2.0	80003002
Balancer with hose pull	1600	0.5 to 1.5	80003001

ESD accessories



1. ESD earthing terminal

as earthing connection for earthing people
(earth bonding point)

- Plastic box with 3 snap fastener connections in front, 10 mm diameter
- One 1 MOhm safety resistor per snap fastener connection, 2 m connecting cable with screw eyelet, 4 mm diameter

2. ESD wristband

Elastic wristband with woven conductive fibres

- Size adjusted via clasp
- Safety resistor, 1 MOhm
- Highly elastic spiral cable, 2.4 m long, with 3 mm snap fastener connection on wristband and 10 mm for connection to ESD earthing terminal
- Colour of wristband: blue
- Colour of spiral cable: black

Description	Image	Order ref.
Earthing terminal	1	50001026.90
Wristband with spiral cable	2	50810010

Turntable



- Stainless steel plate with ribbed rubber mat
- Load capacity: 180 kg
- Version with lock with locking bolt in 45° increments, plate will rotate freely if required
- ESD version with conductive rubber coating and earthing cable

Version	Dimensions Ø x H mm	Order ref.	Order ref. ESD
Without lock	380 x 20	08010036.96	08010056.20
Without lock	500 x 20	08010034.96	08010054.20
With lock	380 x 20	08010035.96	08010055.20
With lock	500 x 20	08010009.96	08010053.20

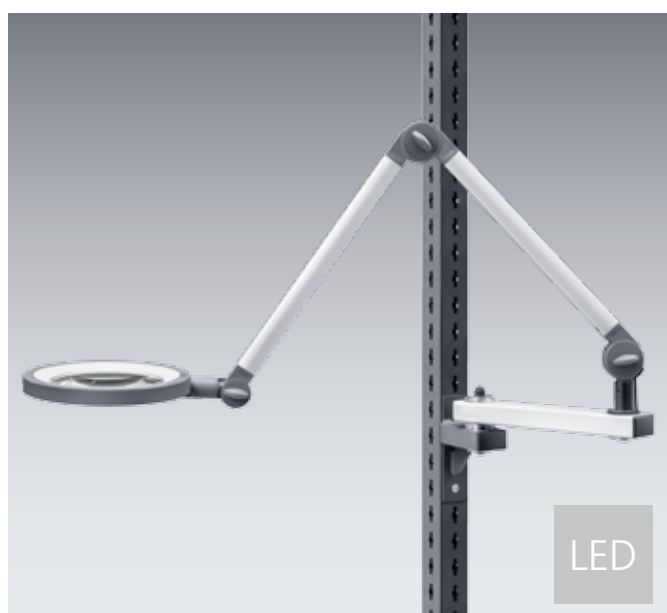
LED articulated arm lamps



- Spring-balanced rod system, length 400 + 385 mm
- Ergonomically shaped tommy screw for adjustment without tools
- 3D joint for rotating and swivelling the lamp body
- Conical prism screen for glare-free working and a homogeneous illuminated area
- Especially energy-saving LED modules
- Neutral white 4000 Kelvin
- Adaptor for fastening to the avero vertical profile with swivel pins for swivelling the lamp
- Optional with additional swivel arm length 350 mm plus additional hinged joint
- Colour: anodised aluminium

Version	Illumination level at a distance of 50 cm	Lamp elements	Order ref.
With adaptor	2500 lx	31 W LED	50502072
With adaptor with swivel arm	2500 lx	31 W LED	50502075

LED articulated arm magnifier lamp, dimmable



- Spring-balanced rod system, length: 402 + 421 mm
- Ergonomically shaped tommy screw for adjustment without tools
- 2D joint for rotating the lamp body
- Especially energy-saving, dimmable LED modules
- Light colour: neutral white 5000 Kelvin
- Plastic magnifying glass with 3.5 dioptries
- Large field of vision with 153 mm diameter
- Colour: anodised aluminium



Version	Illumination level at a distance of 15 cm	Lamp elements	Order ref.
With clamped base	7000 lx	12 W LED	50502096
With avero adaptor	7000 lx	12 W LED	50502097
With avero adaptor and swivel arm	7000 lx	12 W LED	50502098

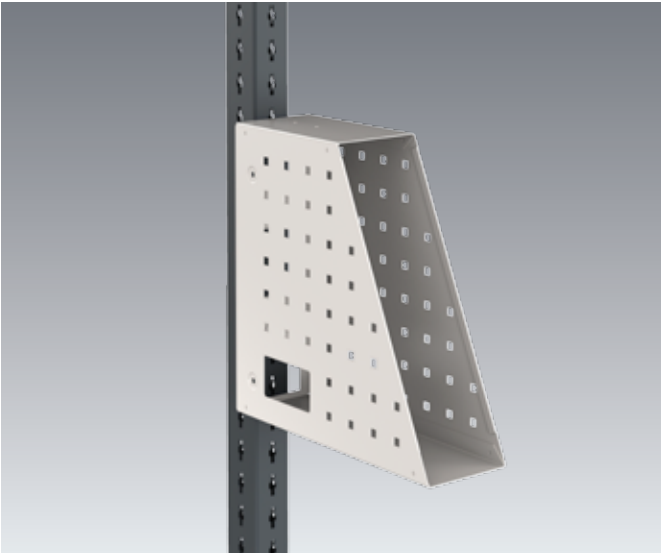
LED articulated arm magnifier lamp



- Spring-balanced rod system, length 485 + 500 mm
- Ergonomically shaped tommy screw for adjustment without tools
- 3D joint for rotating and swivelling the lamp body
- Especially energy-saving LED modules
- Neutral white 4000 Kelvin
- Scratch-resistant glass magnifier with 3.5 dioptries (double magnification)
- Large field of vision with 153 mm diameter
- Adaptor for fastening to the avero vertical profile with swivel pins for swivelling the lamp
- Optional with additional swivel arm length 350 mm plus additional hinged joint
- Colour: anodised aluminium

Version	Illumination level at a distance of 15 cm	Lamp elements	Order ref.
With adaptor	6000 lx	14 W LED	50502073
With adaptor with swivel arm	6000 lx	14 W LED	50502076

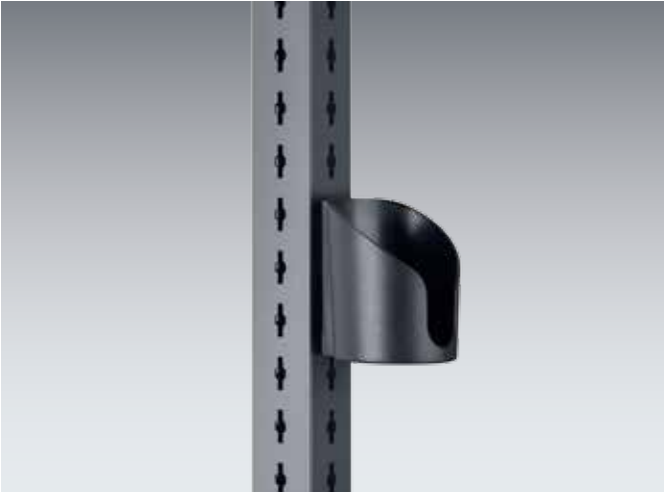
Storage space



- For holding DIN A4 files or PC
- For fastening to the avero vertical profile (side or back) and perfo perforated panels
- Made of conductive powder-coated sheet steel
- Colour: light grey (RAL 7035)
- incl. assembly fixings
- Note that the useful depth of the storage space is reduced in the case of fastening at the side of the avero profile

Dimensions W x D x H mm	Order ref.
110 x 340 x 340	42105036.20

Cup holder



- For fastening to the avero profile or perforated panels
- A closed-base design for holding bottles, cups and containers of up to 90 mm in diameter
- An open-based design for holding small power tools
- Material: glass-fibre reinforced plastic

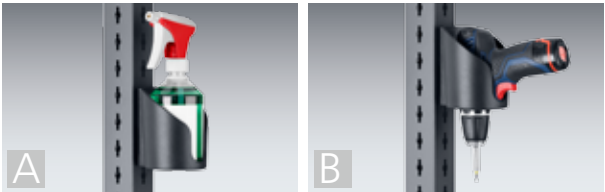


Image	Version	Dimensions W x D x H mm	Order ref.
A	Closed base	100 x 106 x 118	14011033
B	Open base	100 x 106 x 118	14011031

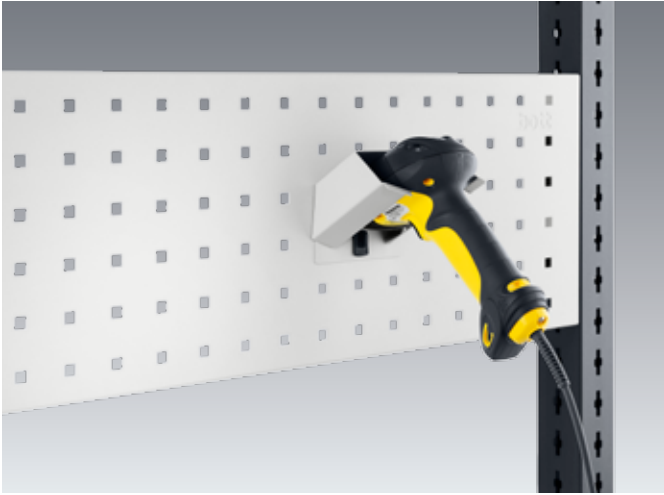
Bottle holder



- For holding bottles of up to 96 mm in diameter and Tetra-Pak containers
- For fastening to the avero vertical profile
- Material: zinc-plated steel

Dimensions Ø x H mm	Order ref.
96 x 162	14021058

Scanner holder



- Suitable for all standard hand-held scanners
- For fastening to perforated panels
- Made of conductive powder-coated sheet steel
- Colour: light grey (RAL 7035)

Dimensions
W x D x H mm

94 x 100 x 100

Order ref.

41011025.20

Industrial chair



- Seat height adjustment with high-quality gas pressure spring
- Seat adjustable in inclination and depth, rounded front seat edge for reduced compressive load
- Backrest with permanent contact function, adjustable in height and inclination, reduced backrest width in upper area for optimal freedom of movement
- Seat and backrest upholstery elements optimally adapted to the anatomy of the body, with robust, breathable cover fabric that can be replaced at any time
- Five-star base, optionally available with sliding bases or castors
- Version with greater height-adjustment range, additionally with height-adjustable and foldable climbing aid
- ESD version with conductive cover fabric, volume-conducting, black plastic parts and conductive swivel castors
- Colour: Black aluminium star base, basalt grey plastic parts, anthracite fabric

Version	Height adjustment range mm	Order ref.	Order ref. ESD
Sliding bases	450-620	88601063.90	88601066.90
Castors	450-620	88601062.90	88601065.90
Sliding bases with climbing aid	590-870	88601064.90	88601067.90



Multi-workstations

Multi-workstations combine several workstations quickly and easily into assembly lines. The use of extension modules saves on components. The modular and sturdy set-up with freely combinable units also makes double-sided installation possible. If the same assembly line is built onto the back, up to 40% procurement costs can be saved.

The extremely sturdy metal frame makes the system very flexible and convertible at any time. The addition and removal of transportation sections or buffer areas, changes in work heights and the installation and removal of accessories can be achieved easily. The standardised modules are quick to install and can be used again and again as required.



Configuration options for multi-workstations



avero



A sturdy, highly flexible and economic system

The avero starter bays can be used for the individual configuration of single and double-sided multi-workstations. The sturdy vertical profiles have the avero wing hole perforations on all four sides, thus enabling the flexible attachment of accessories. The work height can be set between 700 and 1000 mm using clamping screws. This makes ergonomic and efficient work possible. The standard adjustable feet can compensate floor unevenness. The assembly lines are easily extended using extension modules. The same worktops are available for the multi-workstations as for the single workstations.

avero | Multi-workstations



avero



Handling lines

Guarantee smooth and efficient material flow with avero handling lines. The workpiece carrier rolls gently over the roller conveyors of the avero workstation system from assembly segment to assembly segment.

In a similar way to the multi-workstations, you can easily configure your handling lines from starter and extension modules. Depending on the workpieces to be transported, you can equip the handling lines with rollers and roller different tracks.

Roller ball tables allow you to turn or discharge the workpieces. Integrated return feed of workpiece carriers and transport containers make logistics easier and guarantee a smooth material flow.

If necessary we can guarantee ESD protection throughout with the avero assembly and handling lines.



avero



FIFO shelf

Make sure of optimum and efficient material provision in your manual assembly – with avero FIFO shelves! You remove the parts at the front of the assembly workstation, while the necessary supplies are continually provided from the back.

The FIFO shelves are made up of elements from the avero modular system. This makes them ideal for integration in your assembly line. The handling tracks can be adapted quickly and easily to different container systems. In addition, you can adjust the inclination angle of the handling track depending on its length and the weight of the containers.

Mobile FIFO shelves make material provision easier with a large variety of component groups to be assembled and make your manual assembly even more flexible. On request, ESD protection throughout guarantees the safety of sensitive components.



avero



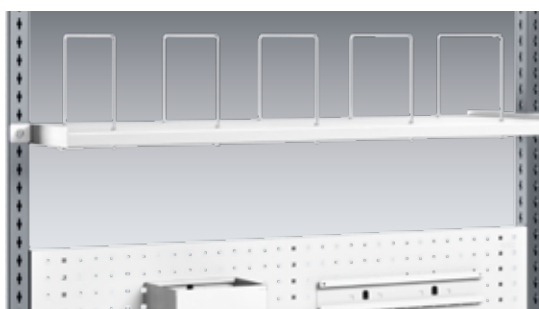
System packing tables

Configure your individual system packing table from the avero system and adapt it easily to your individual requirements.

avero | **System packing tables**

With the avero system packing tables we offer you solutions for packing component groups and finished products. Numerous of our system components can be integrated between the avero profiles. The comprehensive avero accessories can then be attached quickly and easily to these. You can adjust the work height and thus support the ergonomic posture of your employees. This enhances long-term attentiveness at work.

Roll dispensers above or under the worktop hold rolls of packing material. You can cut the packing material up to a width of 1200 mm using the cutter. Flat packed boxes of different sizes or further packing material can be stored clearly on a special shelf with five division hoops.



avero



Mobile systems

Organise material, components and component groups in the flexible and ergonomic avero parts and supply trolley.

The mobile systems from avero guarantee even more flexibility in assembly. Parts and supply trolleys make tools or materials always available where they are needed. You can equip the trolleys with shelves or perforated panels depending on your individual requirements. You get components and component groups ready ergonomically in the avero constant level trolleys and the material stands. On request, we can guarantee ESD protection throughout with the mobile systems as well.



Parts trolley with perfo perforated panels



- For the provision of tools and auxiliary equipment at work
- Robust base frame with swivel castors, diameter 100 mm, 2 with brakes
- Available in 2 heights
- avero vertical profiles mounted in the centre of the base unit
- Double-sided assembly with perfo perforated panels
- Load capacity 200 kg
- Made of conductive powder-coated sheet steel
- Colour: Frame anthracite grey (RAL 7016), perfo perforated panel light grey (RAL 7035)
- ESD version with conductive swivel castors

Dimensions W x D x H mm	Fits between 2 vertical profiles of system width mm	System width mm	perfo perfora- ted panels	Dimensions of perforated panels W x D mm	Order ref.	Order ref. ESD
730 x 675 x 1315	900	675	2 x 2	623 x 480	41014032.16	41014032.20
730 x 675 x 1795	900	675	2 x 3	623 x 480	41014031.16	41014031.20
955 x 675 x 1315	1350	900	2 x 2	848 x 480	41014012.16	41014012.20
955 x 675 x 1795	1350	900	2 x 3	848 x 480	41014011.16	41014011.20
1405 x 675 x 1315	1800	1350	2 x 2	1298 x 480	41014014.16	41014014.20
1405 x 675 x 1795	1800	1350	2 x 3	1298 x 480	41014013.16	41014013.20

Set of pull handles for parts and supply trolley



- For fastening to the avero vertical profile
- Made of conductive powder-coated sheet steel
- Colour: anthracite grey (RAL 7016)

Version	Order ref.
2 pull handles	41011094.71

Supply trolleys with shelves



- For the provision of material and tools at the workstation
- Robust base frame with swivel castors, diameter 100 mm, 2 with brakes
- Available in 2 heights
- avero vertical profiles mounted off-centre on the base frame
- Assembly with tilting and depth-adjustable shelves
- Load capacity 200 kg
- Made of conductive powder-coated sheet steel
- Colour: frame anthracite grey (RAL 7016), shelves light grey (RAL 7035)
- ESD version with conductive swivel castors

Dimensions W x D x H mm	Fits between 2 vertical profiles of system width mm	System width mm	Number of shelves	Dimensions W x D mm	Order ref.	Order ref. ESD
730 x 675 x 1315	900	675	2	621 x 650	41014034.16	41014034.20
730 x 675 x 1795	900	675	3	621 x 650	41014033.16	41014033.20
955 x 675 x 1315	1350	900	2	846 x 650	41014016.16	41014016.20
955 x 675 x 1795	1350	900	3	846 x 650	41014015.16	41014015.20
1405 x 675 x 1315	1800	1350	2	1296 x 650	41014018.16	41014018.20
1405 x 675 x 1795	1800	1350	3	1296 x 650	41014017.16	41014017.20

Base shelf for parts and supply trolley



- For mounting to the base frame of the parts and supply trolley
- Load capacity 100 kg
- Raised lip 25 mm all the way round
- Made of conductive powder-coated sheet steel
- Colour: anthracite grey (RAL 7016)

Dimensions W x D x H mm	For system width mm	For useful width mm	Order ref.
730 x 660 x 25	675	625	42105048.71
955 x 660 x 25	900	850	42105031.71
1405 x 660 x 25	1350	1300	42105037.71

Supply trolley



- For the provision of material and tools at the workstation
- Robust base frame with swivel castors, diameter 100 mm, 2 with brakes
- Available in 2 heights
- Option for fitting avero accessories in the system widths 675, 900 and 1350 mm
- Load capacity 200 kg
- Made of conductive powder-coated sheet steel
- Colour: anthracite grey (RAL 7016)
- ESD version with conductive swivel castors

Info

Please refer to page 60 onwards for matching accessories for the supply trolley

Dimensions W x D x H mm	Fits between 2 vertical profiles of system width mm	System width mm	Order ref.	Order ref. ESD
730 x 675 x 1315	900	675	41014028.19	41014028.71
730 x 675 x 1795	900	675	41014027.19	41014027.71
955 x 675 x 1315	1350	900	41014002.19	41014002.71
955 x 675 x 1795	1350	900	41014001.19	41014001.71
1405 x 675 x 1315	1800	1350	41014004.19	41014004.71
1405 x 675 x 1795	1800	1350	41014003.19	41014003.71

Parts trolley



- For the provision of material and tools at the workstation
- Robust base frame with swivel castors, diameter 100 mm, 2 with brakes
- Available in 2 heights
- Option for fitting avero accessories in the system widths 675, 900 and 1350 mm
- Load capacity 200 kg
- Made of conductive powder-coated sheet steel
- Colour: anthracite grey (RAL 7016)
- ESD version with conductive swivel castors

Info

Please refer to page 60 onwards for matching accessories for the supply trolley

Dimensions W x D x H mm	Fits between 2 vertical profiles of system width mm	System width mm	Order ref.	Order ref. ESD
730 x 675 x 1315	900	675	41014030.19	41014030.71
730 x 675 x 1795	900	675	41014029.19	41014029.71
955 x 675 x 1315	1350	900	41014024.19	41014024.71
955 x 675 x 1795	1350	900	41014023.19	41014023.71
1405 x 675 x 1315	1800	1350	41014026.19	41014026.71
1405 x 675 x 1795	1800	1350	41014025.19	41014025.71

Constant level trolley for standing work positions



- Load height: max. 840 mm (evenly distributed)
- Load capacity: max. 105 kg (evenly distributed)
- Robust base frame with swivel castors, diameter 100 mm, 2 with brakes
- Spring strength can be reduced by removing individual springs
- Automatic adjustment of the cargo area through spring packages after individual boxes have been removed
- Made of conductive powder-coated sheet steel
- Colour: light grey (RAL 7035)
- ESD version with conductive castors



Dimensions W x D x H mm	Cargo area W x D mm	Order ref.	Order ref. ESD
635 x 640 x 1875	600 x 400	11034018.16	11034019.20
435 x 790 x 1875	400 x 600	11034021.16	11034021.20

Constant level trolley for seated workplaces



- Load height: max. 600 mm (evenly distributed)
- Load capacity: max. 75 kg (evenly distributed)
- Robust base frame with swivel castors, diameter 100 mm, 2 with brakes
- Spring strength can be reduced by removing individual springs
- Automatic adjustment of the cargo area through spring packages after individual boxes have been removed
- Made of conductive powder-coated sheet steel
- Colour: light grey (RAL 7035)
- ESD version with conductive castors

Dimensions W x D x H mm	Cargo area W x D mm	Order ref.	Order ref. ESD
635 x 640 x 1200	600 x 400	11034005.16	11034013.20
435 x 790 x 1200	400 x 600	11034020.16	11034020.20

Material stands can be configured on both sides



- Particularly suitable for euroboxes
- Ideal for picking and assembly work
- Height adjustment gas spring supported
- Adjustable tilt from 0° to 20°
- Swivel castors diameter 75 mm ensure optimum stability and manoeuvring
- Swivel castor brake (A = 2 pieces / B = 4 pieces)
- Storage space with 20 mm safety lip at the front

Image	Dimensions of the platform W x D mm	Height mm	Max. load capacity kg	Lifting device kg	Order ref.
A	500 x 350	620 - 875	100	25	88603001
B	800 x 600	730 - 980	125	50	88603002

Trolley



- For the provision of material and tools at the workstation
- Infinitely variable work height 770-1050 mm
- Locked by clamp lever
- Load capacity 60 kg
- Robust base frame with swivel castors, diameter 100 mm, 2 with brakes
- Made of conductive powder-coated sheet steel
- Colour: light grey (RAL 7035)
- Delivery does not include worktop
- ESD version with conductive swivel castors

Version	Dimensions W x D mm	Order ref.	Order ref. ESD
Frame without panel	560 x 640	110 34 002.16	11034010.20

Suitable worktops for the trolley

Worktop quality	Dimensions W x D x H mm	Order ref.
Melamine-coated	600 x 665 x 30	11201178.01
Melamine-coated ESD	600 x 665 x 30	11201178.04
Laminate coated	600 x 665 x 30	11201178.02
Laminate coated ESD	600 x 665 x 30	11201178.05
Beech multiplex	600 x 665 x 30	11201178.08



Fully modular system

- Compact work and information station
- For the simple and structured provision of information and tools
- Ideal for the workshop, shipping, QA and production
- Creates order and clarity in operation and allows work to be done according to lean management principles
- Also available as a mobile version for even more flexibility
- Depending on the version also equipped with power sockets and modern LED lights
- Can be flexibly adapted through comprehensive avero and perfo accessories



Basic

LEAN-Point assembly

- 5 magnets
- 15-piece perfo hook and bracket set
- 5 document holders, DIN A4 landscape
- perfo storage shelf
- Support rail with 3 bottBoxes M2

Optional

LED strip light

- Particularly energy-efficient and long-lasting thanks to the use of LED lamps
- Low glare level thanks to prism cover in front of the lamp
- Light colour: 5200-5700 K (daylight white)
- Power consumption: approx. 42 W
- Luminous flux: approx. 3570 lm
- Illumination level at a distance of 100 cm (average value): 1003 lux
- Protection class: IP40



- Socket strip with on/off switch











- Stationary or mobile version



Width 1350 x D 870 mm



	Stationary version	For plug system DE Schuko / Type F 	CH Type J 	FR Type E 	DK Type K 
A	Basic	41011194.16	41011194.16	41011194.16	41011194.16
B	With socket strip	41011195.16	41011198.16	41011204.16	41011201.16
C	With LED light	41011196.16	41011199.16	41011205.16	41011202.16
D	With LED light and socket strip	41011197.16	41011200.16	41011206.16	41011203.16

	Mobile version	For plug system DE Schuko / Type F 	CH Type J 	FR Type E 	DK Type K 
E	Basic	41011207.16	41011207.16	41011207.16	41011207.16
F	With socket strip	41011208.16	41011211.16	41011217.16	41011214.16
G	With LED light	41011209.16	41011212.16	41011218.16	41011215.16
H	With LED light and socket strip	41011210.16	41011213.16	41011219.16	41011216.16



If you have any questions about bott products or would like to place an order by telephone, the bott dialog-aktiv telesales team will be happy to assist :
+49 (0) 7971 / 251 – 251.

Or you can send your query by email to: **info@bott.de**



www.bott.de

Bott GmbH & Co. KG, Bahnstraße 17, 74405 Gaildorf, Germany
dialog-*aktiv* telesales team: Phone: +49 (0)79 71 / 251-251, Fax: +49 (0)79 71 / 251-205



www.bott.at

Bott Austria GmbH, IZ-NÖ Süd Straße 2d Objekt M21/II, A-2351 Wiener Neudorf, Austria
Phone: +43 (0) 2236 660-431, Fax: +43 (0) 2236 660-4314



www.bott.ch

Bott Schweiz AG, Vorhard 4, 5312 Döttingen, Switzerland
Phone: +41 (0)56 437 40 90 , Fax: +41 (0)56 437 40 99

